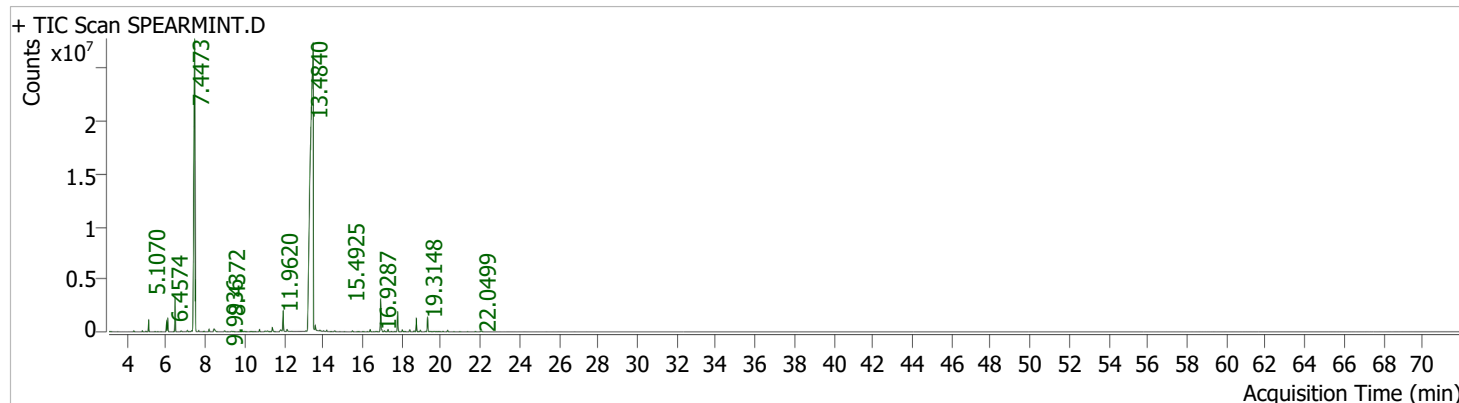


Batch Path D:\MassHunter\Data\A. Kapat\NMR  
 Analysis File Name new2.uaf  
 Analyst Name Basab-GCMS  
 Analysis Time 19-03-2026 17:34:52  
 Data File Name SPEARMINT.D Data Path Name D:\MassHunter\Data\A. Kapat\NMR  
 Sample Name Acq SPE-BDU-2507 / PEPPERWOODD Sample Type Sample  
 Method File Acq Bio Oil pyrolysis4\_new.m Acq Method Path D:\MassHunter\GCMS\methods  
 Time Instrument 12-03-2026 10:14:29 Operator  
 Name GCMS Dilution 1

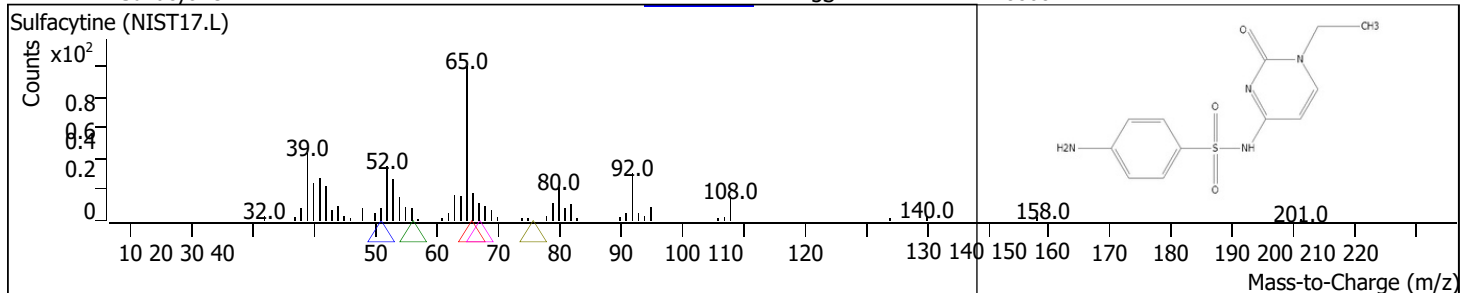


RT	Compound Name	CAS#	Formula	Area	Match Score	Sample	Sample
3.1214	Sulfacytine	<a href="#">17784-12-2</a>	C <sub>12</sub> H <sub>14</sub> N <sub>4</sub> O <sub>3</sub> S	88082	54.1	0.02	0.03
3.5391	Butanoic acid, 2-methyl-, ethyl ester	<a href="#">7452-79-1</a>	C <sub>7</sub> H <sub>14</sub> O <sub>2</sub>	7845	68.9	0.00	0.00
4.3517	Furan, 2,5-diethyltetrahydro-	<a href="#">41239-48-9</a>	C <sub>8</sub> H <sub>16</sub> O	194769	95.4	0.04	0.07
4.7865	5,5-Dimethyl-1-vinylbicyclo[2.1.1]hexane	<a href="#">16626-39-4</a>	C <sub>10</sub> H <sub>16</sub>	207722	95.2	0.05	0.07
4.9696	Bicyclo[3.1.0]hex-2-ene, 2-methyl-5-(1-methylethyl)-	<a href="#">2867-05-2</a>	C <sub>10</sub> H <sub>16</sub>	121196	94.3	0.03	0.04
5.1070	trans-.beta.-Ocimene	<a href="#">3779-61-1</a>	C <sub>10</sub> H <sub>16</sub>	2137115	98.0	0.47	0.75
5.4389	Camphene	<a href="#">79-92-5</a>	C <sub>10</sub> H <sub>16</sub>	55938	93.2	0.01	0.02
5.5705	diazoadamantane	<a href="#">24175-02-8</a>	C <sub>10</sub> H <sub>14</sub> N <sub>2</sub>	23836	78.1	0.01	0.01
5.7421	Benzaldehyde	<a href="#">100-52-7</a>	C <sub>7</sub> H <sub>6</sub> O	15259	69.4	0.00	0.01
6.0168	Bicyclo[3.1.0]hexane, 4-methylene-1-(1-methylethyl)-	<a href="#">3387-41-5</a>	C <sub>10</sub> H <sub>16</sub>	1793694	98.1	0.40	0.63
6.0797	.beta.-Pinene	<a href="#">127-91-3</a>	C <sub>10</sub> H <sub>16</sub>	2608478	98.5	0.58	0.92
6.3658	3-Heptanone, 5-methyl-	<a href="#">541-85-5</a>	C <sub>8</sub> H <sub>16</sub> O	26353	73.5	0.01	0.01
6.4574	.beta.-Myrcene	<a href="#">123-35-3</a>	C <sub>10</sub> H <sub>16</sub>	6167030	96.3	1.36	2.18
6.7606	(+)-4-Carene	<a href="#">29050-33-7</a>	C <sub>10</sub> H <sub>16</sub>	276686	84.5	0.06	0.10
7.0811	Cyclohexene, 4-methyl-3-(1-methylethylidene)-	<a href="#">99805-90-0</a>	C <sub>10</sub> H <sub>16</sub>	292800	93.7	0.06	0.10
7.2928	Benzene, 1-methyl-3-(1-methylethyl)-	<a href="#">535-77-3</a>	C <sub>10</sub> H <sub>14</sub>	287691	92.4	0.06	0.10
7.4473	D-Limonene	<a href="#">5989-27-5</a>	C <sub>10</sub> H <sub>16</sub>	107716943	98.9	23.80	38.04
7.4873	Eucalyptol	<a href="#">470-82-6</a>	C <sub>10</sub> H <sub>18</sub> O	7219152	84.1	1.60	2.55
7.6590	trans-.beta.-Ocimene	<a href="#">3779-61-1</a>	C <sub>10</sub> H <sub>16</sub>	192147	95.6	0.04	0.07
7.9279	.beta.-Ocimene	<a href="#">13877-91-3</a>	C <sub>10</sub> H <sub>16</sub>	133833	92.7	0.03	0.05
8.1854	.gamma.-Terpinene	<a href="#">99-85-4</a>	C <sub>10</sub> H <sub>16</sub>	527799	97.2	0.12	0.19
8.4372	Bicyclo[3.1.0]hexan-2-ol, 2-methyl-5-(1-methylethyl)-, (1.alpha.,2.beta.,5.alpha.)-	<a href="#">15537-55-0</a>	C <sub>10</sub> H <sub>18</sub> O	1347658	95.1	0.30	0.48
8.9751	Cyclohexene, 1-methyl-4-(1-methylethylidene)-	<a href="#">586-62-9</a>	C <sub>10</sub> H <sub>16</sub>	293160	95.1	0.06	0.10
9.1467	Cyclopropane, 1,1-dimethyl-2-(2,4-pentadienyl)-	<a href="#">61141-99-9</a>	C <sub>10</sub> H <sub>16</sub>	15002	66.1	0.00	0.01
9.3298	Linalool	<a href="#">78-70-6</a>	C <sub>10</sub> H <sub>18</sub> O	226811	89.1	0.05	0.08
9.4271	(2,2-Dimethylcyclobutyl)methylamine	<a href="#">1000195-04-0</a>	C <sub>7</sub> H <sub>15</sub> N	126817	72.4	0.03	0.04
9.6674	1,9-Nonanediol	<a href="#">3937-56-2</a>	C <sub>9</sub> H <sub>20</sub> O <sub>2</sub>	11641	74.3	0.00	0.00
9.8963	2-Cyclohexen-1-ol, 1-methyl-4-(1-methylethenyl)-, trans-	<a href="#">7212-40-0</a>	C <sub>10</sub> H <sub>16</sub> O	142765	81.3	0.03	0.05
9.9936	3-Octanol, acetate	<a href="#">4864-61-3</a>	C <sub>10</sub> H <sub>20</sub> O <sub>2</sub>	155540	88.5	0.03	0.05
10.3312	Limonene oxide, trans-	<a href="#">4959-35-7</a>	C <sub>10</sub> H <sub>16</sub> O	167888	89.7	0.04	0.06

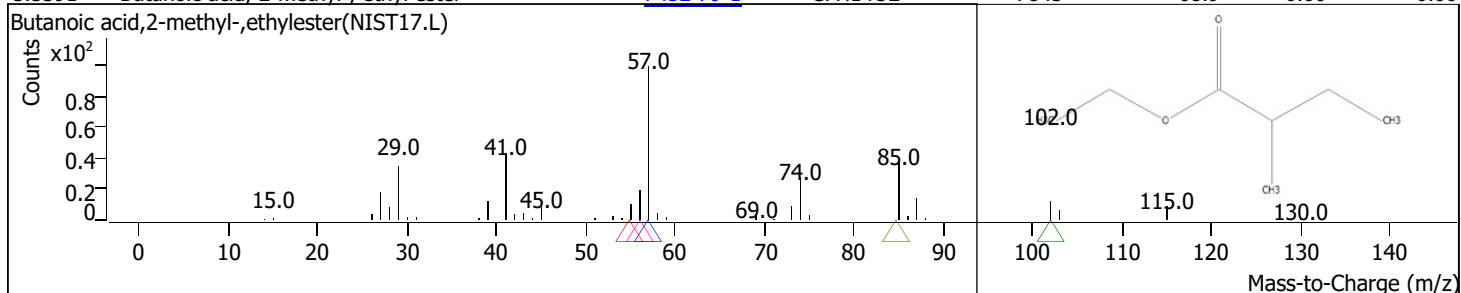
RT	Compound Name	CAS#	Formula	Area	Match Score	Sample	Sample
10.5315	Carvone	<a href="#">99-49-0</a>	C10H14O	46839	79.5	0.01	0.02
10.7546	Cyclohexanone, 5-methyl-2-(1-methylethyl)-	<a href="#">10458-14-7</a>	C10H18O	501186	96.2	0.11	0.18
11.0407	2,4-Pentadien-1-ol, 3-pentyl-, (2Z)-	<a href="#">1000142-19-7</a>	C10H18O	265363	75.5	0.06	0.09
11.1609	Cyclohexanemethanol, .alpha.,.alpha.-dimethyl-4-methylene-	<a href="#">7299-42-5</a>	C10H18O	401527	82.3	0.09	0.14
11.3326	5-Undecen-3-yne, (E)-	<a href="#">74744-31-3</a>	C11H18	35740	76.0	0.01	0.01
11.4069	Terpinen-4-ol	<a href="#">562-74-3</a>	C10H18O	1248045	95.5	0.28	0.44
11.8361	.alpha.-Terpineol	<a href="#">98-55-5</a>	C10H18O	932606	97.3	0.21	0.33
11.9620	Cyclohexanone, 2-methyl-5-(1-methylethenyl)-, trans-	<a href="#">5948-04-9</a>	C10H16O	4833792	95.5	1.07	1.71
12.1565	Cyclohexanone, 2-methyl-5-(1-methylethenyl)-, trans-	<a href="#">5948-04-9</a>	C10H16O	538480	94.8	0.12	0.19
12.3911	<a href="#">7438-05-3</a> Octane, 1-azido-		C8H17N3	53386	76.4	0.01	0.02
13.1178	<a href="#">78158-11-9</a> Cyclopentanol, 1-(1-methylene-2-propenyl)-		C9H14O	99298	75.1	0.02	0.04
13.4840	<a href="#">6485-40-1</a> (-)-Carvone		C10H14O	283197885	98.6	62.57	100.00
13.5985	<a href="#">89-81-6</a> 2-Cyclohexen-1-one, 3-methyl-6-(1-methylethyl)-		C10H16O	1536752	91.5	0.34	0.54
13.8331	<a href="#">39903-97-4</a> Carvone oxide, trans-		C10H14O2	249962	90.3	0.06	0.09
14.0105	<a href="#">26503-98-8</a> 2-Cyclohexen-1-one, 3-methyl-6-(1-methylethenyl)-, (S)-		C10H14O	110192	74.9	0.02	0.04
14.1764	<a href="#">72746-44-2</a> Carvone oxide, cis-		C10H14O2	277165	94.6	0.06	0.10
14.4282	<a href="#">24562-86-6</a> 1,5,5,8a-Tetramethyl-3,4,4a,5,6,8a-hexahydro-2H-chromene		C13H22O	38196	68.9	0.01	0.01
14.5941	<a href="#">25091-24-1</a> 4-Phenyl chloroformate		C11H19ClO2	274035	86.2	0.06	0.10
14.8573	<a href="#">619-00-2</a> Dodecen-1-yne, (Z)-		C12H20	11909	64.0	0.00	0.00
15.0748	<a href="#">103-1</a> Bicyclo[3.1.1]heptan-3-ol, 6,6-dimethyl-2-methylene-, [1S-(1.alpha.,3.alpha.,5.alpha.)]-		C10H16O	13929	74.6	0.00	0.00
15.4925	<a href="#">61800-50-2</a> Cyclohexanol, 2-methyl-5-(1-methylethenyl)-		C10H18O	252021	95.8	0.06	0.09
15.7328	<a href="#">26503-98-8</a> 2-Cyclohexen-1-ol, 2-methyl-5-(1-methylethenyl)-, acetate, (1R-cis)-		C12H18O2	30806	81.7	0.01	0.01
15.8129	<a href="#">93-28-7</a> 4,7,7-Trimethylbicyclo[4.1.0]hept-3-en-2-one		C10H14O	62625	87.0	0.01	0.02
16.0189	<a href="#">7053-79-4</a> Cyclooctene, 5,6-dimethylene-		C10H14	80355	84.1	0.02	0.03
16.2535	<a href="#">13474-59-4</a> Phenol, 2-methoxy-4-(2-propenyl)-, acetate		C12H14O3	45033	76.0	0.01	0.02
16.3908	<a href="#">3856-25-5</a> 2-Cyclohexen-1-ol, 2-methyl-5-(1-methylethenyl)-, acetate, (1R-trans)-		C12H18O2	521358	96.0	0.12	0.18
16.5797	<a href="#">5208-59-3</a> trans-.alpha.-Bergamotene		C15H24	27031	83.4	0.01	0.01
16.6884	<a href="#">110823-68-2</a> Copaene		C15H24	207412	90.7	0.05	0.07
16.9287	<a href="#">589-33-3</a> (-)-.beta.-Bourbonene		C15H24	8248661	96.6	1.82	2.91
17.1118	<a href="#">488-10-8</a> Cyclohexane, 1-ethenyl-1-methyl-2,4-bis(1-methylethenyl)-		C15H24	320553	94.6	0.07	0.11
17.1805	<a href="#">15474-59-4</a> 1H-Pyrrole, 1-butyl-		C8H13N	63219	66.2	0.01	0.02
17.3006	<a href="#">29589-39-8</a> 2-Cyclopenten-1-one, 3-methyl-2-(2-pentenyl)-, (Z)-		C11H16O	562471	93.5	0.12	0.20
17.4666	<a href="#">18794-84-8</a> trans-.alpha.-Bergamotene		C15H24	99889	88.2	0.02	0.04
17.6096	<a href="#">118-53-0</a> p-Mentha-1(7),8(10)-dien-9-ol		C15H24	46162	84.1	0.01	0.02
17.6669	(E)-.beta.-Famesene		C15H24	47351	75.9	0.01	0.02
17.7870	<a href="#">118-53-0</a> Bicyclo[7.2.0]undec-4-ene, 4,11,11-trimethyl-8-methylene-, [1R-(1R*,4Z,9S*)]-		C15H24	4753619	96.1	1.05	1.68
18.0273	<a href="#">13744-15-5</a> 1H-Cyclopenta[1,3]cyclopropa[1,2]benzene, octahydro-7-methyl-3-methylene-4-(1-methylethyl)-, [3aS-(3a.alpha.,3b.beta.,4.beta.,7.alpha.,7aS*)]-		C15H24	494413	94.2	0.11	0.17
18.1132	<a href="#">77129-48-7</a> Butanoic acid, 2-methyl-, octyl ester		C15H24	80106	84.4	0.02	0.03
18.1761	<a href="#">29811-50-5</a> (S,1Z,6Z)-8-Isopropyl-1-methyl-5-methylenecyclodeca-1,6-diene	<a href="#">317819-80-0</a>	C13H26O2	89641	84.0	0.02	0.03
18.4107	<a href="#">6753-98-6</a> Humulene		C15H24	503575	93.4	0.11	0.18
18.6282	<a href="#">18794-84-8</a> (E)-.beta.-Famesene		C15H24	234767	93.1	0.05	0.08
18.7426	<a href="#">23986-74-5</a> Germacrene D		C15H24	2934175	96.4	0.65	1.04
18.8857	<a href="#">15474-59-4</a> 1H-Cyclopenta[1,3]cyclopropa[1,2]benzene, octahydro-7-methyl-3-methylene-4-(1-methylethyl)-, [3aS-(3a.alpha.,3b.beta.,4.beta.,7.alpha.,7aS*)]-		C15H24	49127	84.2	0.01	0.02
18.9486	<a href="#">13744-15-5</a>		C15H24	375418	90.4	0.08	0.13

RT	Compound Name	CAS#	Formula	Area	Match Score	Sample	Sample
19.2118	Germacrene D	<a href="#">23986-74-5</a>	C15H24	134643	89.9	0.03	0.05
19.3148	1H-Cyclopenta[1,3]cyclopropa[1,2]benzene, octahydro-7-methyl-3-methylene-4-(1-methylethyl)-, [3aS-(3a.alpha.,3b.beta.,4.beta.,7.alpha.,7aS*)]-	<a href="#">13744-15-5</a> <del><a href="#">110823-68-2</a></del>	C15H24	3440307	95.2	0.76	1.21
19.4292	Cyclohexane, 1-ethenyl-1-methyl-2,4-bis(1-methylethenyl)-	<a href="#">489-39-4</a>	C15H24	214561	83.0	0.05	0.08
19.6524	Aromandendrene	<a href="#">1000151-74-7</a>	C15H24	199689	88.7	0.04	0.07
19.7897	Tetracyclo[6.1.0.0(2,4).0(5,7)]nonane, 3,3,6,6,9,9-hexamethyl-, cis,cis,trans-	<del><a href="#">110823-68-2</a></del>	C15H24	75822	80.1	0.02	0.03
19.8870	Cyclohexane, 1-ethenyl-1-methyl-2,4-bis(1-methylethenyl)-	<a href="#">_____</a>	C15H24	124569	86.9	0.03	0.04
20.1044	1H-Cyclopenta[1,3]cyclopropa[1,2]benzene, octahydro-7-methyl-3-methylene-4-(1-methylethyl)-, [3aS-(3a.alpha.,3b.beta.,4.beta.,7.alpha.,7aS*)]-	<a href="#">13744-15-5</a> <del><a href="#">483-76-1</a></del>	C15H24	131958	90.8	0.03	0.05
20.3333	Naphthalene, 1,2,3,5,6,8a-hexahydro-4,7-dimethyl-1-(1-methylethyl)-, (1S-cis)-	<a href="#">23986-74-5</a>	C15H24	379181	95.0	0.08	0.13
20.6480	Germacrene D	<a href="#">21789-56-0</a>	C15H24	37457	71.9	0.01	0.01
20.9513	Naphthalene, 1,2,3,4,4a,5,8,8a-octahydro-4a-methyl-, trans-	<del><a href="#">21789-56-0</a></del> <a href="#">62338-42-5</a>	C11H18	42662	77.0	0.01	0.02
21.3519	Naphthalene, 1,2,3,4,4a,5,8,8a-octahydro-4a-methyl-, trans-	<a href="#">489-39-4</a>	C11H18	34536	72.9	0.01	0.01
21.7581	Cyclobutene, 4,4-dimethyl-1-(2,7-octadienyl)-	<a href="#">_____</a>	C14H22	85799	85.2	0.02	0.03
22.0499	Aromandendrene	<a href="#">_____</a>	C15H24	315107	92.0	0.07	0.11

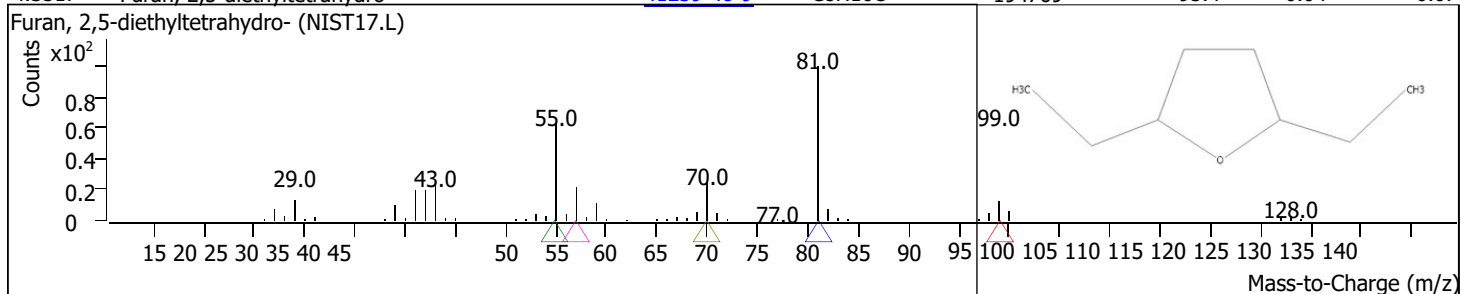
RT	Compound Name	CAS#	Formula	Area	Match Score	Sample	Sample
3.1214	Sulfacytine	<a href="#">17784-12-2</a>	C <sub>12</sub> H <sub>14</sub> N <sub>4</sub> O 3S	88082	54.1	0.02	0.03



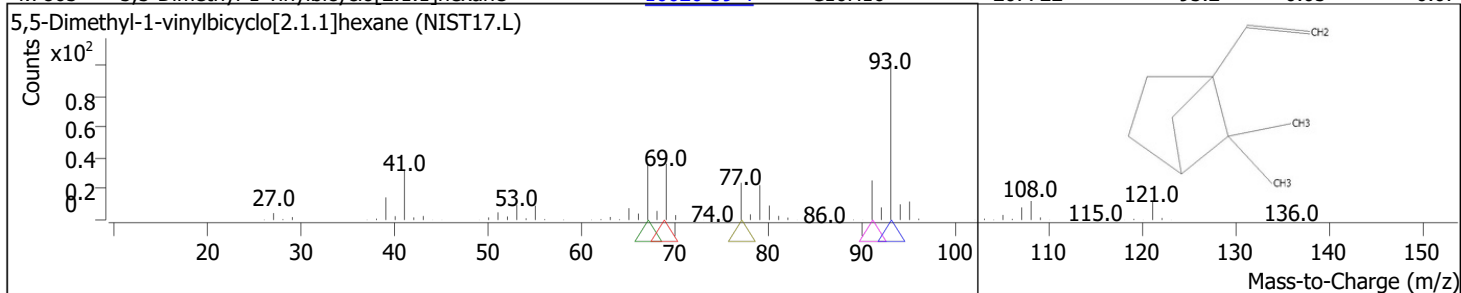
RT	Compound Name	CAS#	Formula	Area	Match Score	Sample	Sample
3.5391	Butanoic acid, 2-methyl-, ethyl ester	<a href="#">7452-79-1</a>	C <sub>7</sub> H <sub>14</sub> O <sub>2</sub>	7845	68.9	0.00	0.00



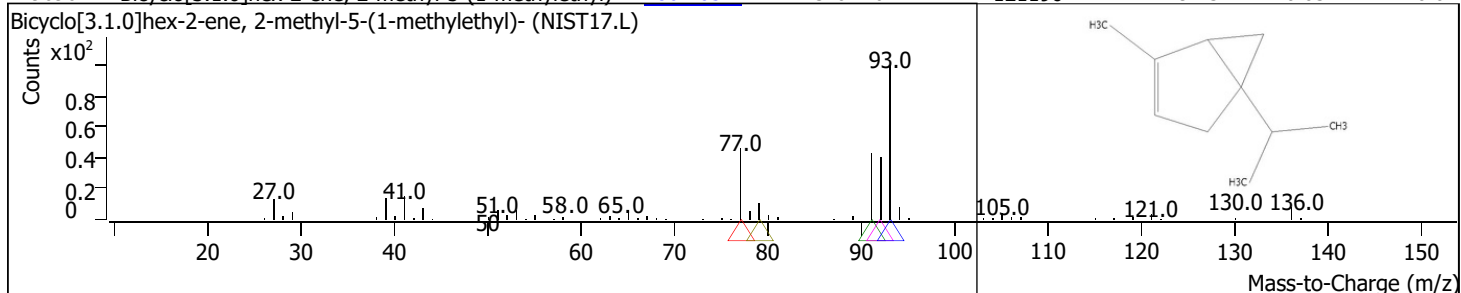
RT	Compound Name	CAS#	Formula	Area	Match Score	Sample	Sample
4.3517	Furan, 2,5-diethyltetrahydro-	<a href="#">41239-48-9</a>	C <sub>8</sub> H <sub>16</sub> O	194769	95.4	0.04	0.07



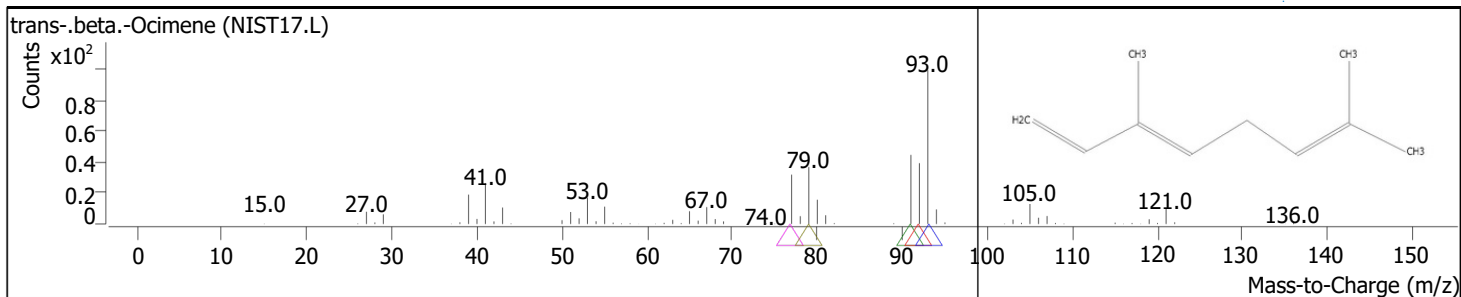
RT	Compound Name	CAS#	Formula	Area	Match Score	Sample	Sample
4.7865	5,5-Dimethyl-1-vinylbicyclo[2.1.1]hexane	<a href="#">16626-39-4</a>	C <sub>10</sub> H <sub>16</sub>	207722	95.2	0.05	0.07



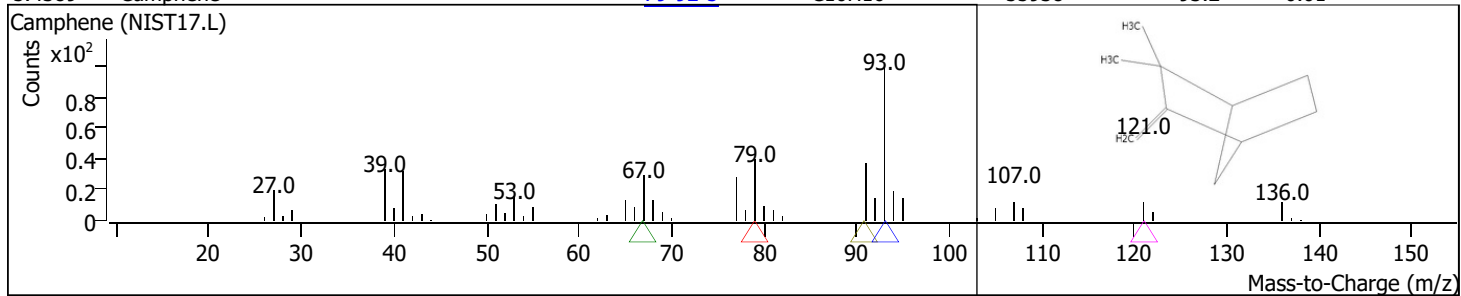
RT	Compound Name	CAS#	Formula	Area	Match Score	Sample	Sample
4.9696	Bicyclo[3.1.0]hex-2-ene, 2-methyl-5-(1-methylethyl)-	<a href="#">2867-05-2</a>	C <sub>10</sub> H <sub>16</sub>	121196	94.3	0.03	0.04



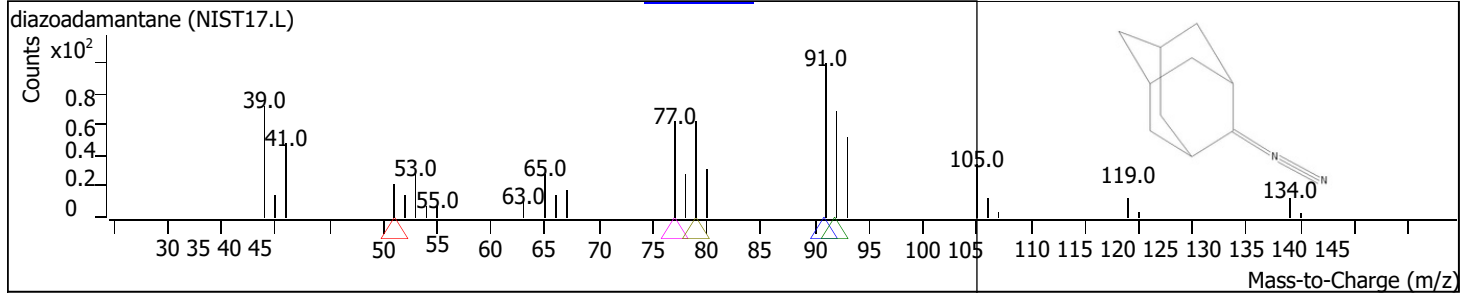
RT	Compound Name	CAS#	Formula	Area	Match Score	Sample	Sample
5.1070	trans-.beta.-Ocimene	<a href="#">3779-61-1</a>	C <sub>10</sub> H <sub>16</sub>	2137115	98.0	0.47	0.75



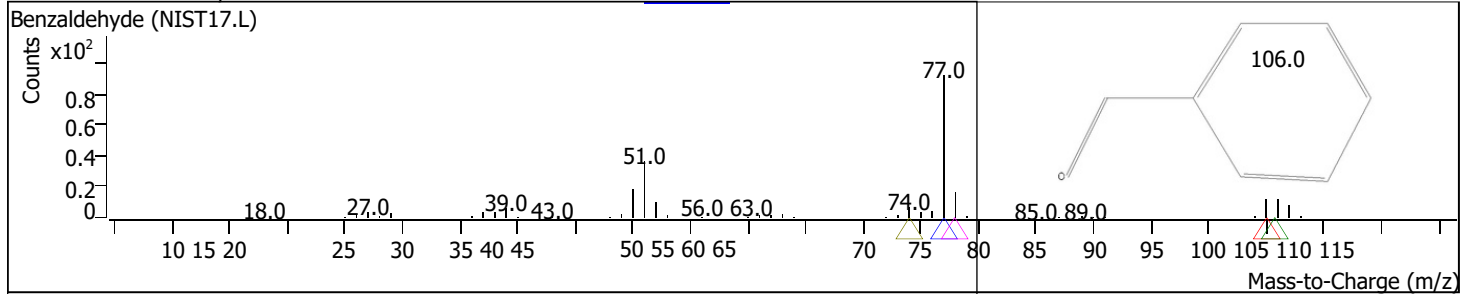
RT	Compound Name	CAS#	Formula	Area	Match Score	Sample	Sample
5.4389	Camphene	<a href="#">79-92-5</a>	C10H16	55938	93.2	0.01	0.02



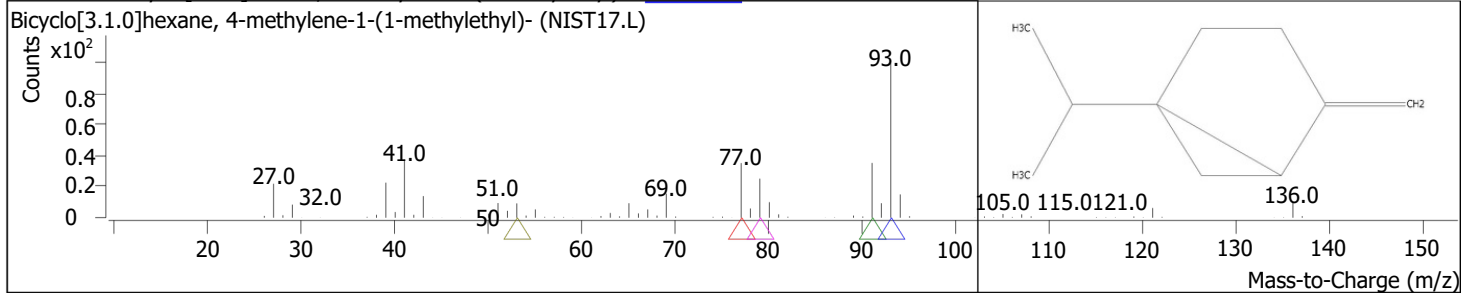
RT	Compound Name	CAS#	Formula	Area	Match Score	Sample	Sample
5.5705	diazoadamantane	<a href="#">24175-02-8</a>	C10H14N2	23836	78.1	0.01	0.01



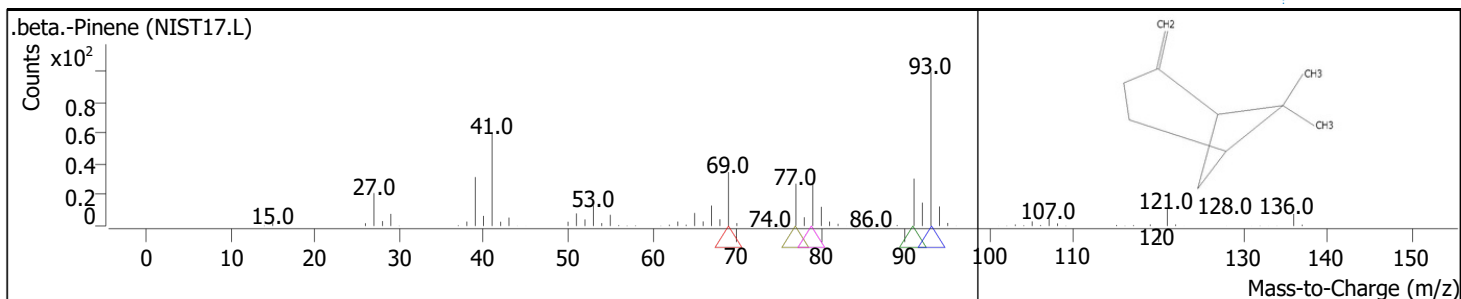
RT	Compound Name	CAS#	Formula	Area	Match Score	Sample	Sample
5.7421	Benzaldehyde	<a href="#">100-52-7</a>	C7H6O	15259	69.4	0.00	0.01



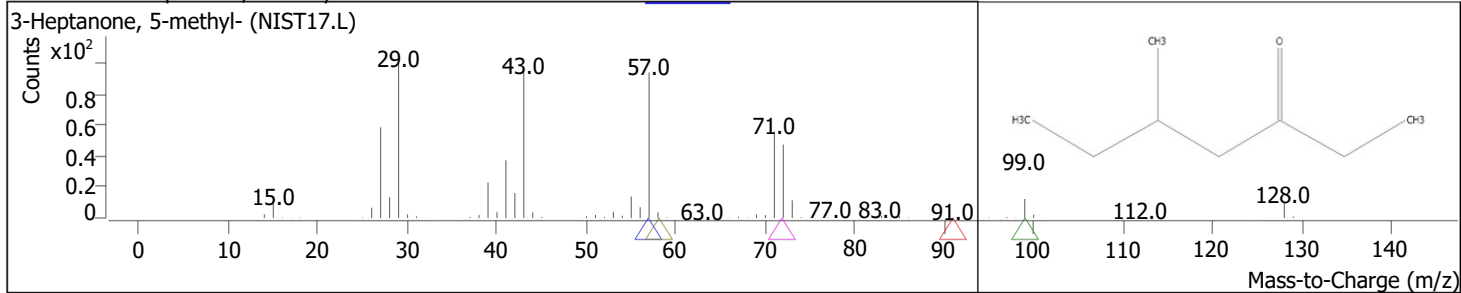
RT	Compound Name	CAS#	Formula	Area	Match Score	Sample	Sample
6.0168	Bicyclo[3.1.0]hexane, 4-methylene-1-(1-methylethyl)-	<a href="#">3387-41-5</a>	C10H16	1793694	98.1	0.40	0.63



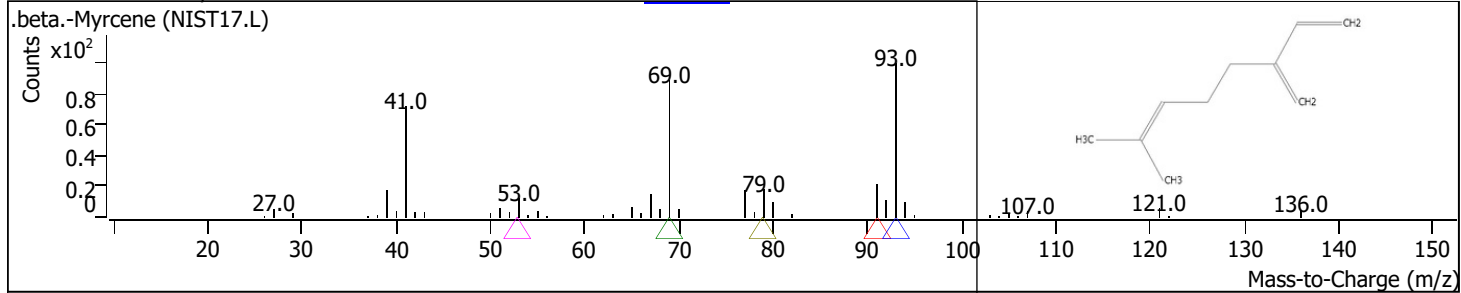
RT	Compound Name	CAS#	Formula	Area	Match Score	Sample	Sample
6.0797	.beta.-Pinene	<a href="#">127-91-3</a>	C10H16	2608478	98.5	0.58	0.92



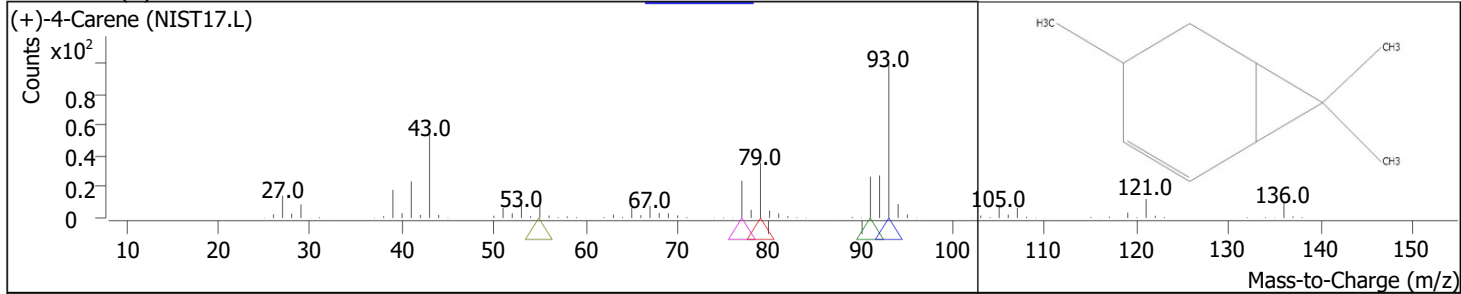
RT	Compound Name	CAS#	Formula	Area	Match Score	Sample
6.3658	3-Heptanone, 5-methyl-	<a href="#">541-85-5</a>	C8H16O	26353	73.5	0.01



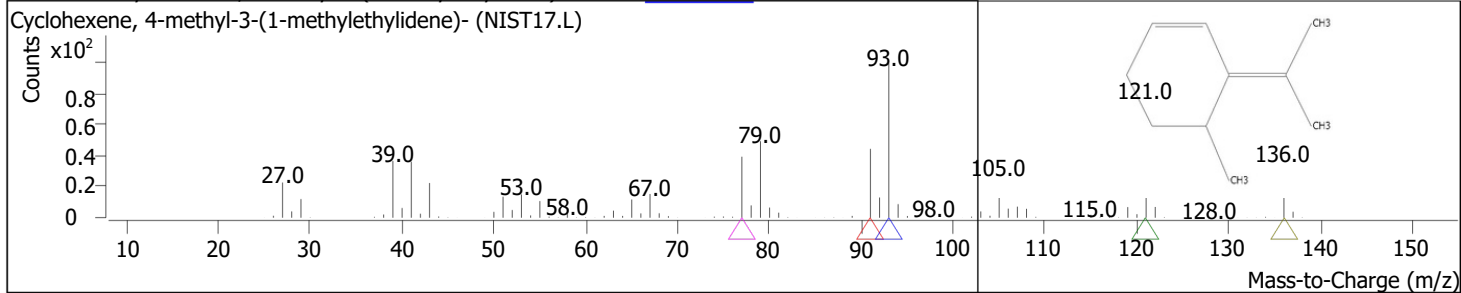
RT	Compound Name	CAS#	Formula	Area	Match Score	Sample
6.4574	.beta.-Myrcene	<a href="#">123-35-3</a>	C10H16	6167030	96.3	1.36



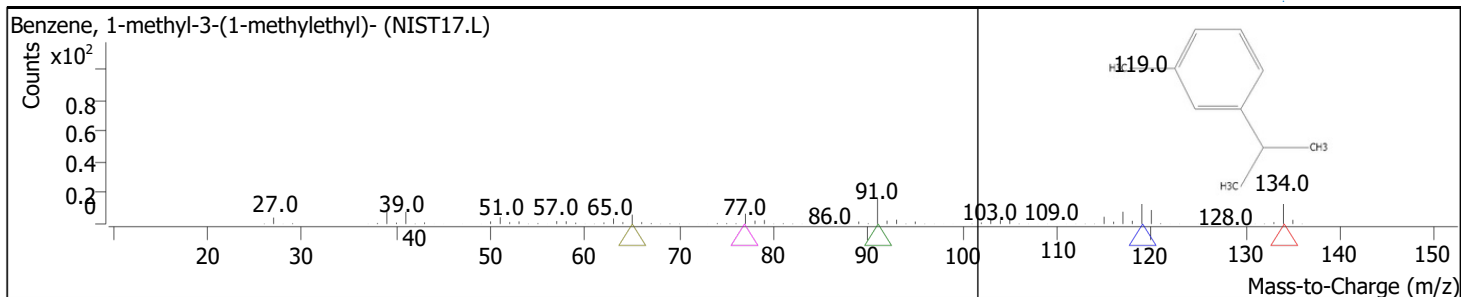
RT	Compound Name	CAS#	Formula	Area	Match Score	Sample
6.7606	(+)-4-Carene	<a href="#">29050-33-7</a>	C10H16	276686	84.5	0.06



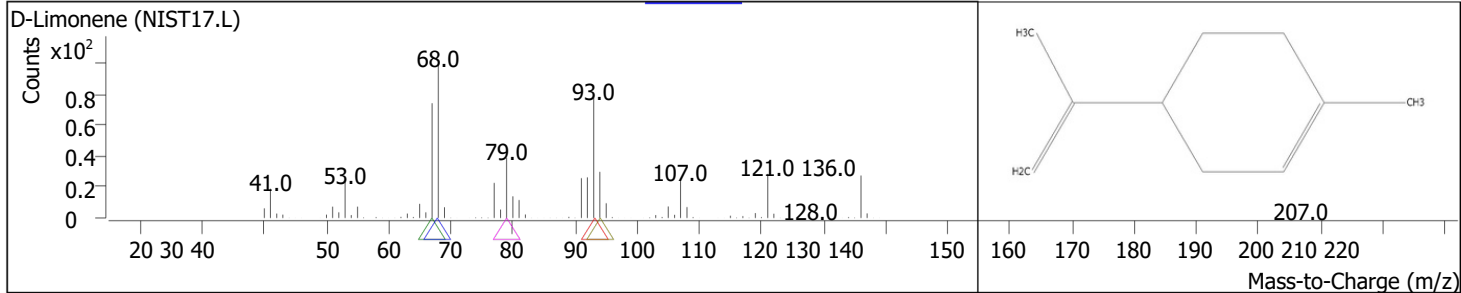
RT	Compound Name	CAS#	Formula	Area	Match Score	Sample
7.0811	Cyclohexene, 4-methyl-3-(1-methylethylidene)-	<a href="#">99805-90-0</a>	C10H16	292800	93.7	0.06



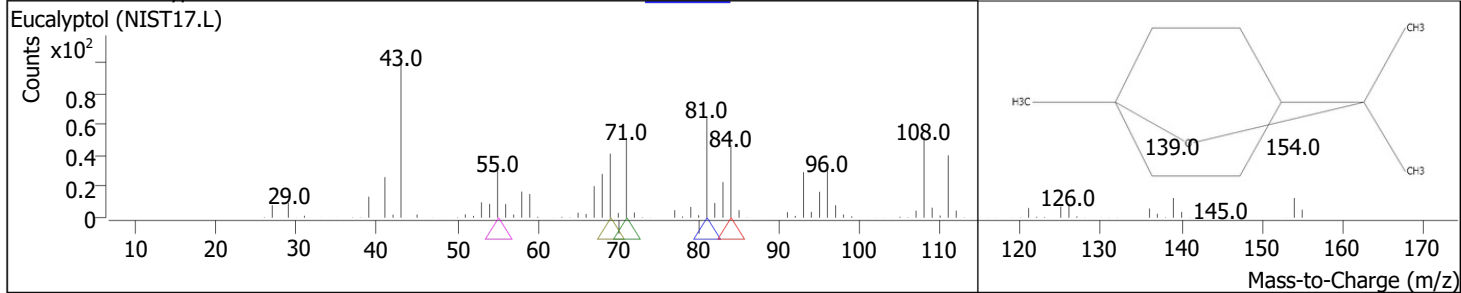
RT	Compound Name	CAS#	Formula	Area	Match Score	Sample
7.2928	Benzene, 1-methyl-3-(1-methylethyl)-	<a href="#">535-77-3</a>	C10H14	287691	92.4	0.06



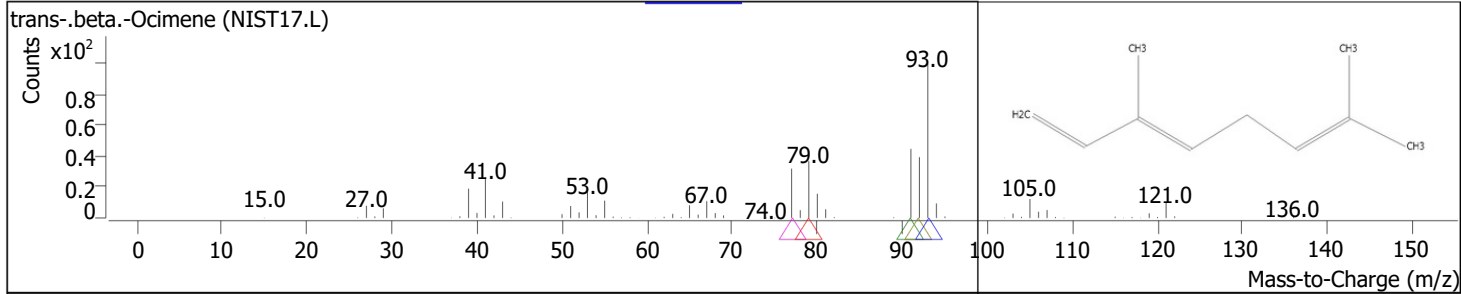
RT	Compound Name	CAS#	Formula	Area	Match Score	Sample	Sample
7.4473	D-Limonene	<a href="#">5989-27-5</a>	C10H16	107716943	98.9	23.80	38.04



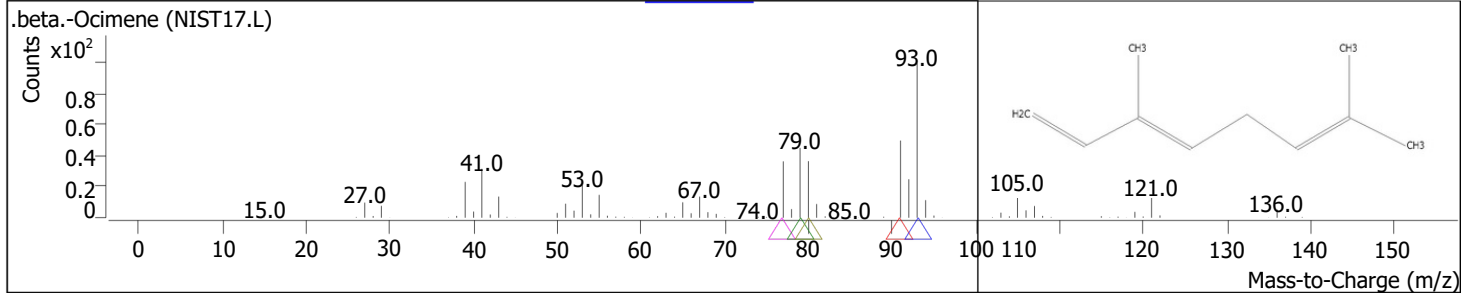
RT	Compound Name	CAS#	Formula	Area	Match Score	Sample	Sample
7.4873	Eucalyptol	<a href="#">470-82-6</a>	C10H18O	7219152	84.1	1.60	2.55



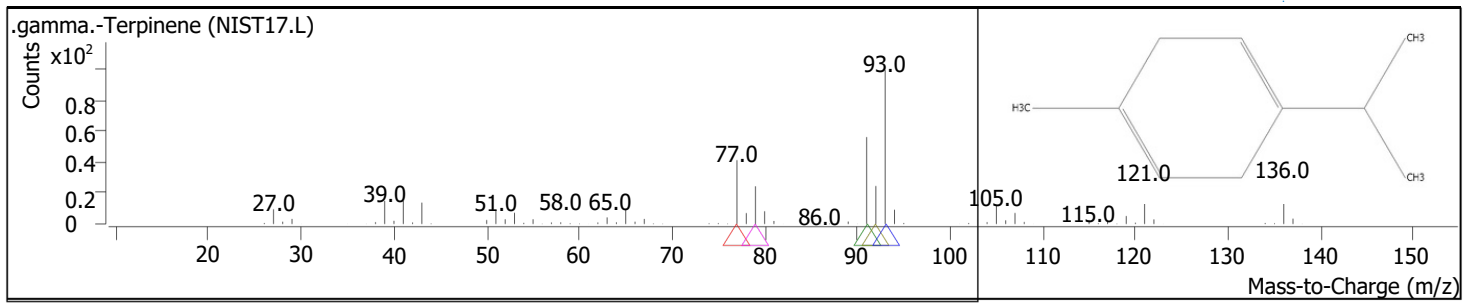
RT	Compound Name	CAS#	Formula	Area	Match Score	Sample	Sample
7.6590	trans-.beta.-Ocimene	<a href="#">3779-61-1</a>	C10H16	192147	95.6	0.04	0.07



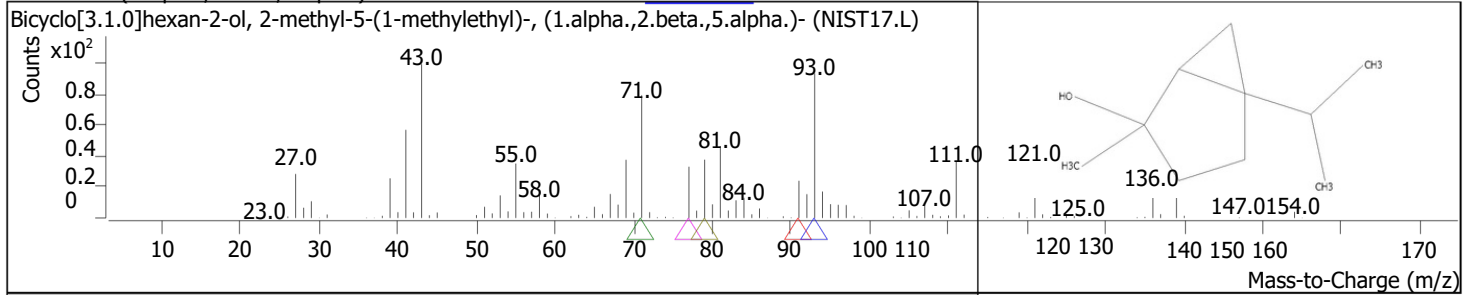
RT	Compound Name	CAS#	Formula	Area	Match Score	Sample	Sample
7.9279	.beta.-Ocimene	<a href="#">13877-91-3</a>	C10H16	133833	92.7	0.03	0.05



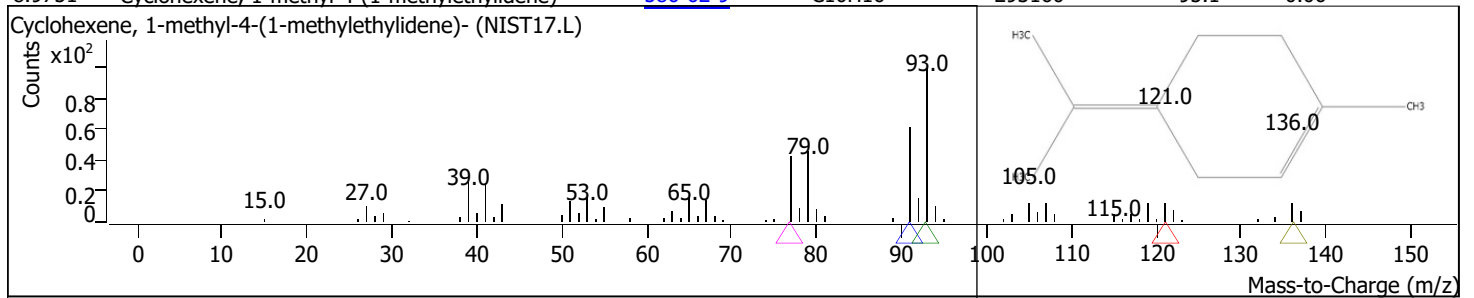
RT	Compound Name	CAS#	Formula	Area	Match Score	Sample	Sample
8.1854	.gamma.-Terpinene	<a href="#">99-85-4</a>	C10H16	527799	97.2	0.12	0.19



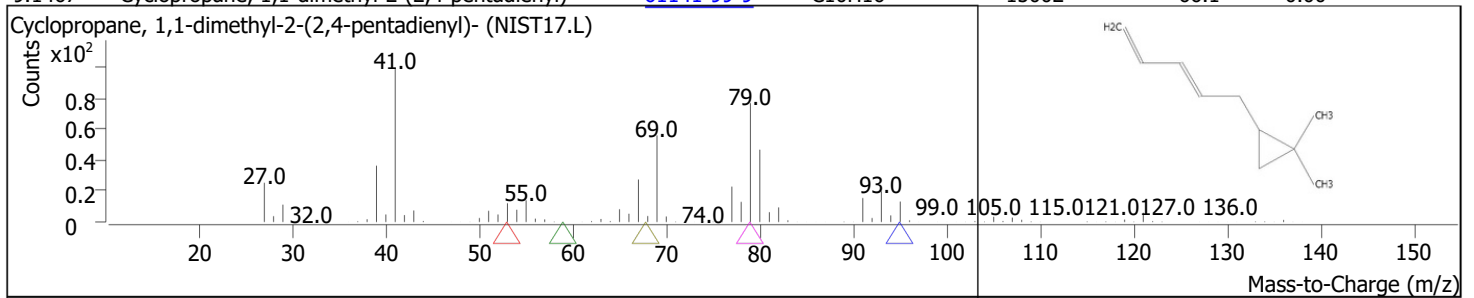
RT	Compound Name	CAS#	Formula	Area	Match Score	Sample	Sample
8.4372	Bicyclo[3.1.0]hexan-2-ol, 2-methyl-5-(1-methylethyl)-, (1.alpha.,2.beta.,5.alpha.)-	15537-55-0	C10H18O	1347658	95.1	0.30	0.48



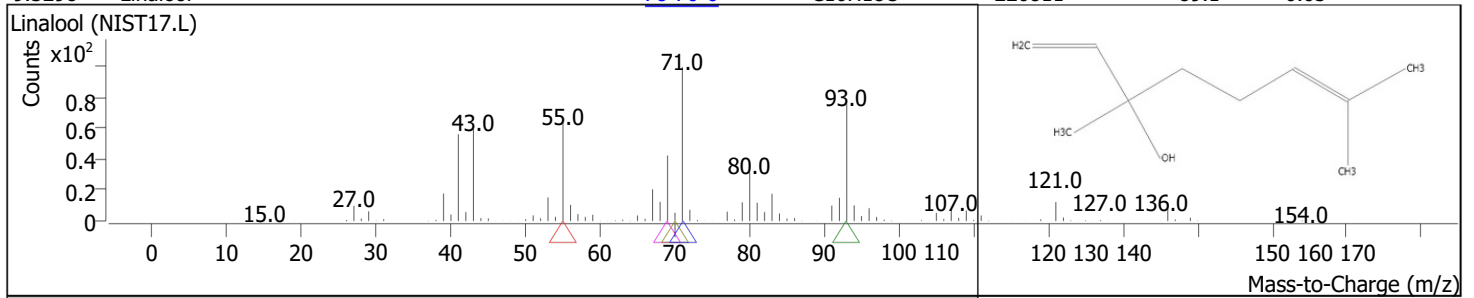
RT	Compound Name	CAS#	Formula	Area	Match Score	Sample	Sample
8.9751	Cyclohexene, 1-methyl-4-(1-methylethylidene)-	586-62-9	C10H16	293160	95.1	0.06	0.10



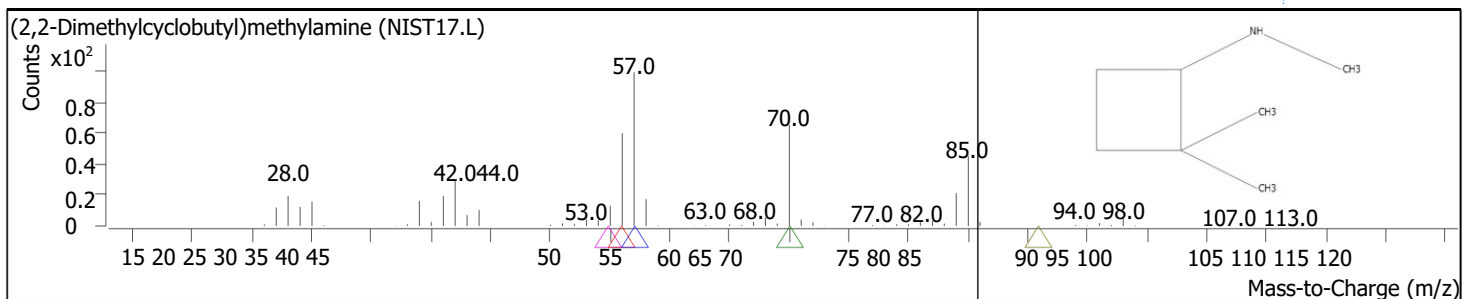
RT	Compound Name	CAS#	Formula	Area	Match Score	Sample	Sample
9.1467	Cyclopropane, 1,1-dimethyl-2-(2,4-pentadienyl)-	61141-99-9	C10H16	15002	66.1	0.00	0.01



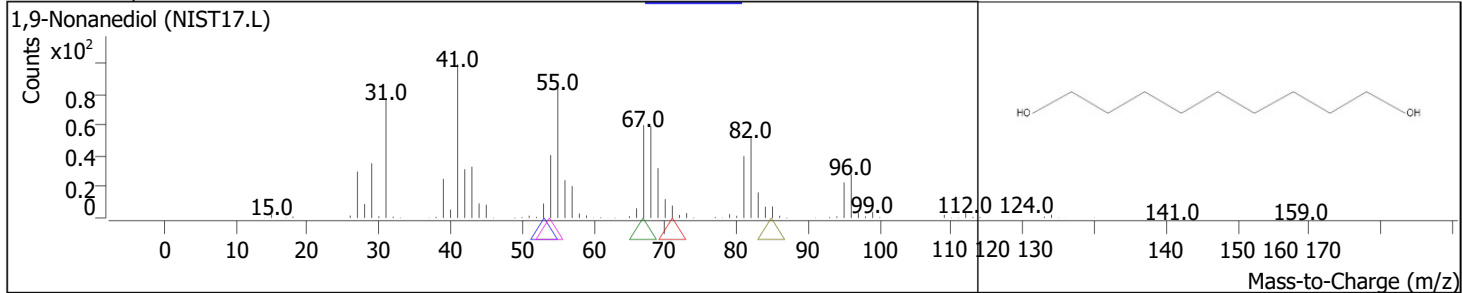
RT	Compound Name	CAS#	Formula	Area	Match Score	Sample	Sample
9.3298	Linalool	78-70-6	C10H18O	226811	89.1	0.05	0.08



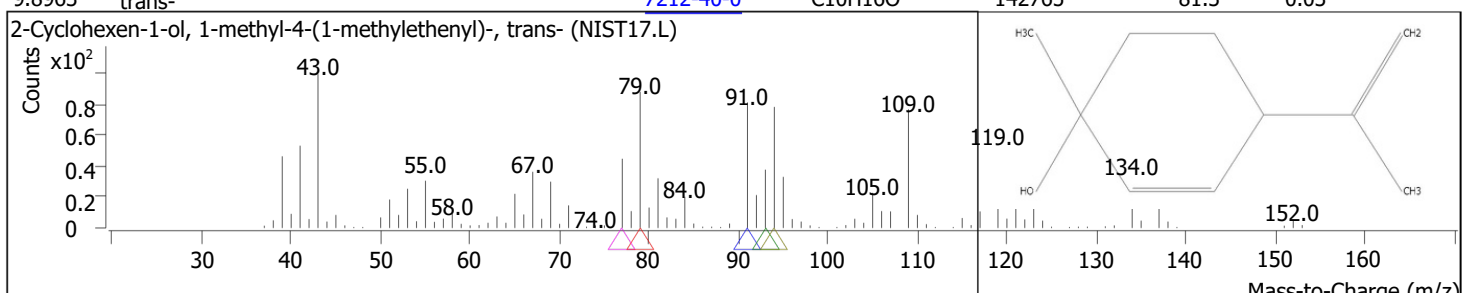
RT	Compound Name	CAS#	Formula	Area	Match Score	Sample	Sample
9.4271	(2,2-Dimethylcyclobutyl)methylamine	1000195-04-0	C7H15N	126817	72.4	0.03	0.04



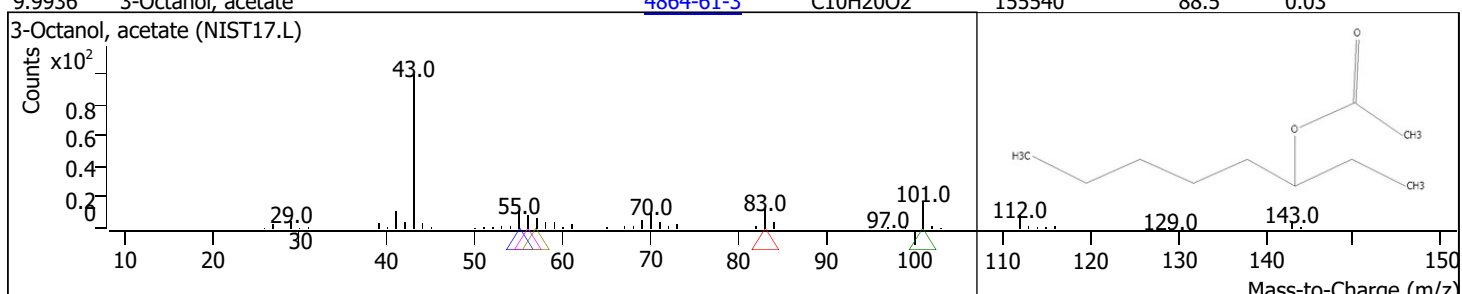
RT	Compound Name	CAS#	Formula	Area	Match Score	Sample	Sample
9.6674	1,9-Nonanediol	<a href="#">3937-56-2</a>	C9H20O2	11641	74.3	0.00	0.00



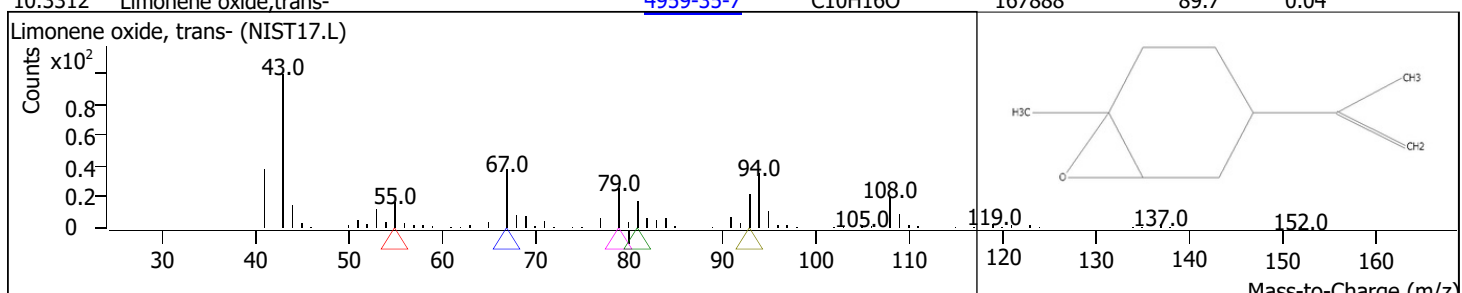
RT	Compound Name	CAS#	Formula	Area	Match Score	Sample	Sample
9.8963	2-Cyclohexen-1-ol, 1-methyl-4-(1-methylethenyl)-, trans-	<a href="#">7212-40-0</a>	C10H16O	142765	81.3	0.03	0.05



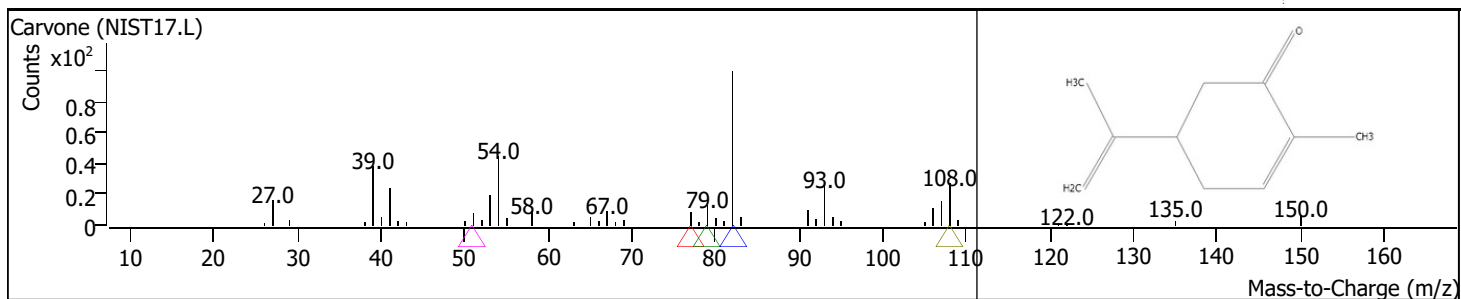
RT	Compound Name	CAS#	Formula	Area	Match Score	Sample	Sample
9.9936	3-Octanol, acetate	<a href="#">4864-61-3</a>	C10H20O2	155540	88.5	0.03	0.05



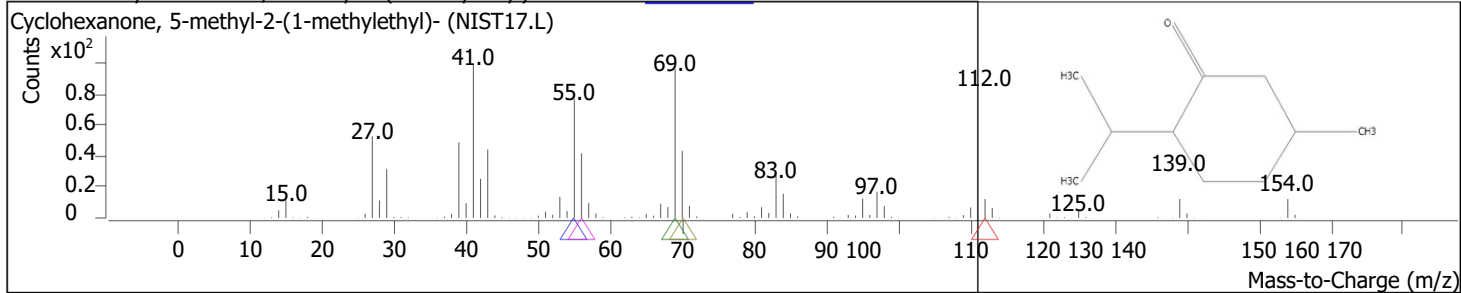
RT	Compound Name	CAS#	Formula	Area	Match Score	Sample	Sample
10.3312	Limonene oxide, trans-	<a href="#">4959-35-7</a>	C10H16O	167888	89.7	0.04	0.06



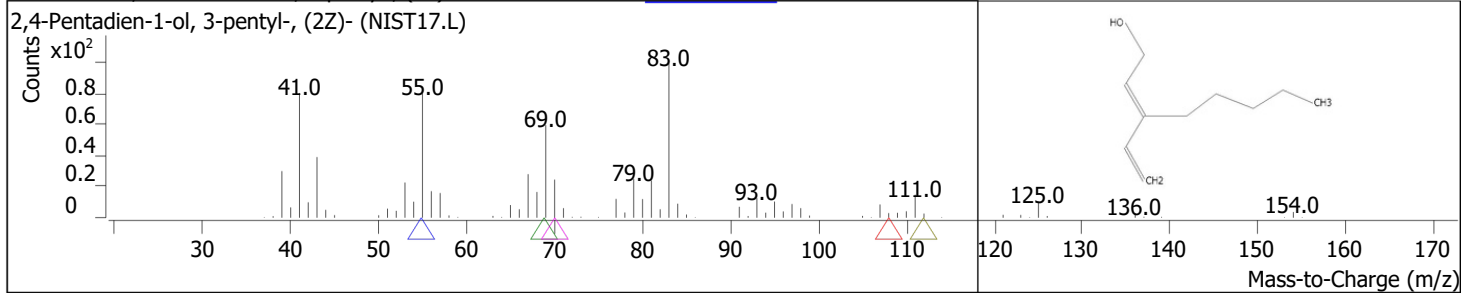
RT	Compound Name	CAS#	Formula	Area	Match Score	Sample	Sample
10.5315	Carvone	<a href="#">99-49-0</a>	C10H14O	46839	79.5	0.01	0.02



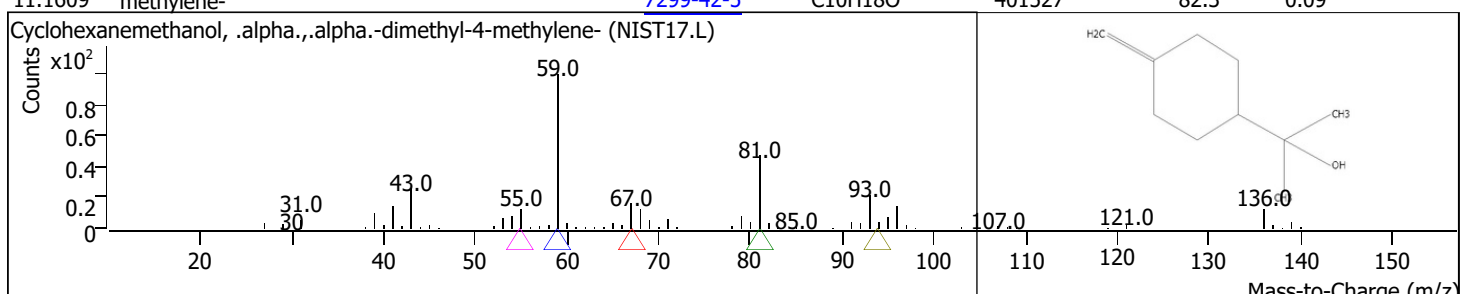
RT	Compound Name	CAS#	Formula	Area	Match Score	Sample	Sample
10.7546	Cyclohexanone, 5-methyl-2-(1-methylethyl)-	<a href="#">10458-14-7</a>	C10H18O	501186	96.2	0.11	0.18



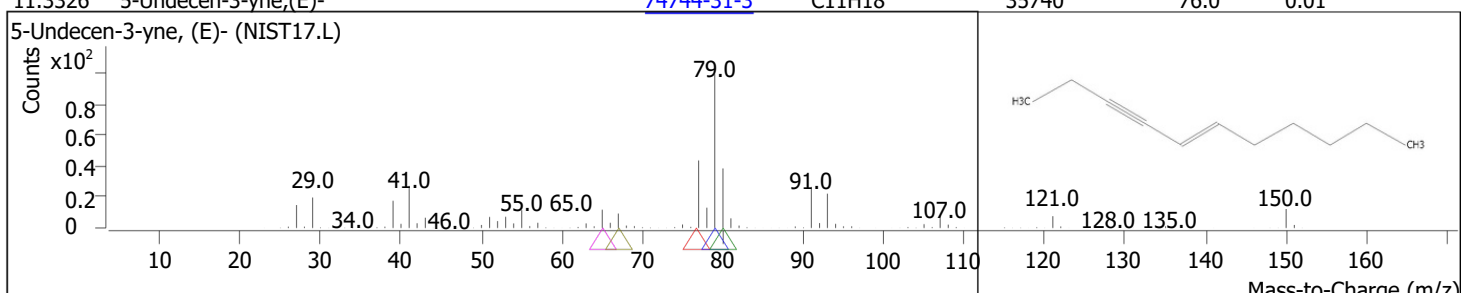
RT	Compound Name	CAS#	Formula	Area	Match Score	Sample	Sample
11.0407	2,4-Pentadien-1-ol, 3-pentyl-, (2Z)-	<a href="#">1000142-19-7</a>	C10H18O	265363	75.5	0.06	0.09



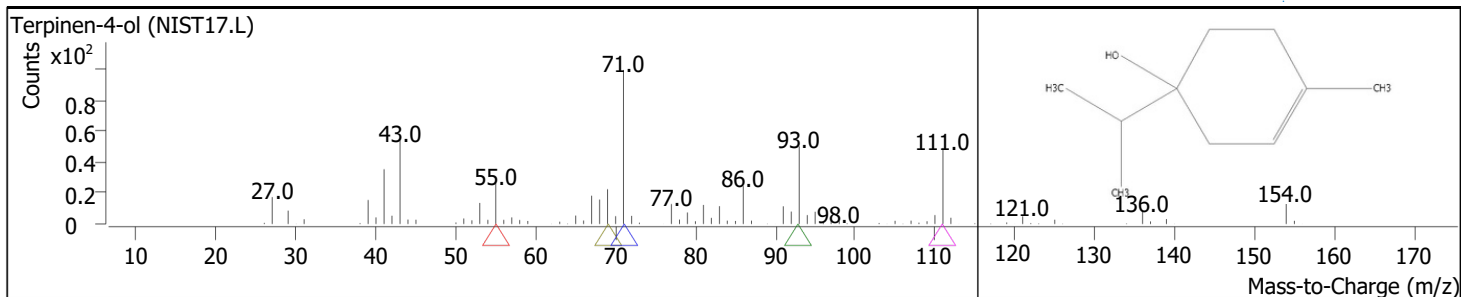
RT	Compound Name	CAS#	Formula	Area	Match Score	Sample	Sample
11.1609	Cyclohexanemethanol, .alpha.,.alpha.-dimethyl-4-methylene-	<a href="#">7299-42-5</a>	C10H18O	401527	82.3	0.09	0.14



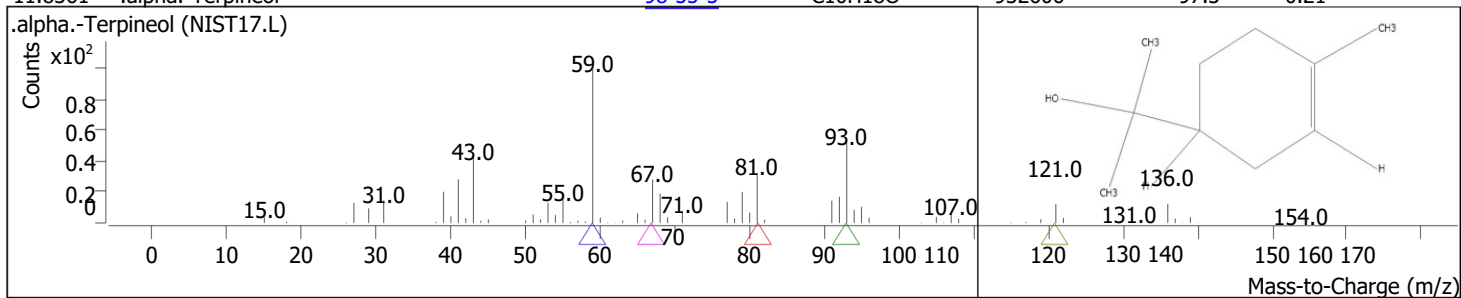
RT	Compound Name	CAS#	Formula	Area	Match Score	Sample	Sample
11.3326	5-Undecen-3-yne,(E)-	<a href="#">74744-31-3</a>	C11H18	35740	76.0	0.01	0.01



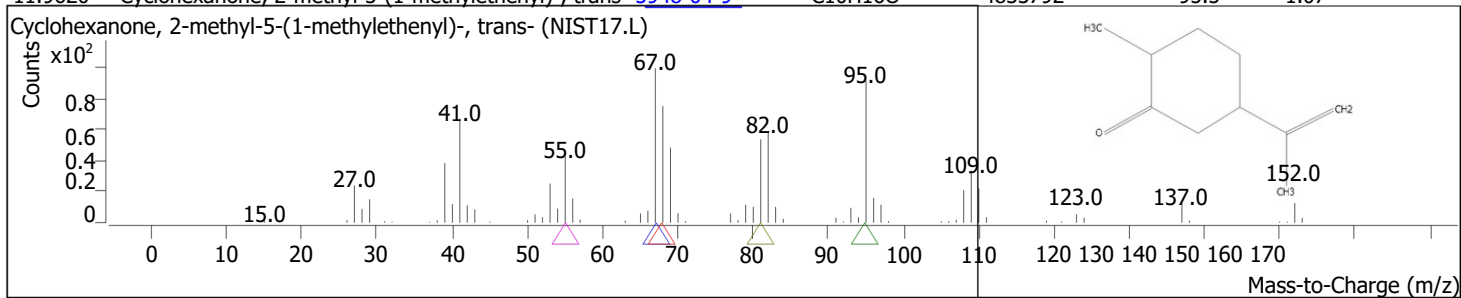
RT	Compound Name	CAS#	Formula	Area	Match Score	Sample	Sample
11.4069	Terpinen-4-ol	<a href="#">562-74-3</a>	C10H18O	1248045	95.5	0.28	0.44



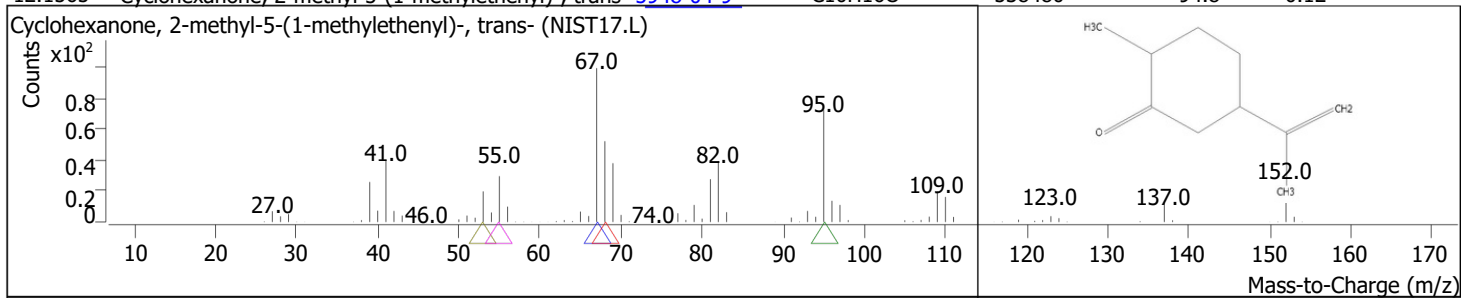
RT	Compound Name	CAS#	Formula	Area	Match Score	Sample	Sample
11.8361	.alpha.-Terpineol	<a href="#">98-55-5</a>	C10H18O	932606	97.3	0.21	0.33



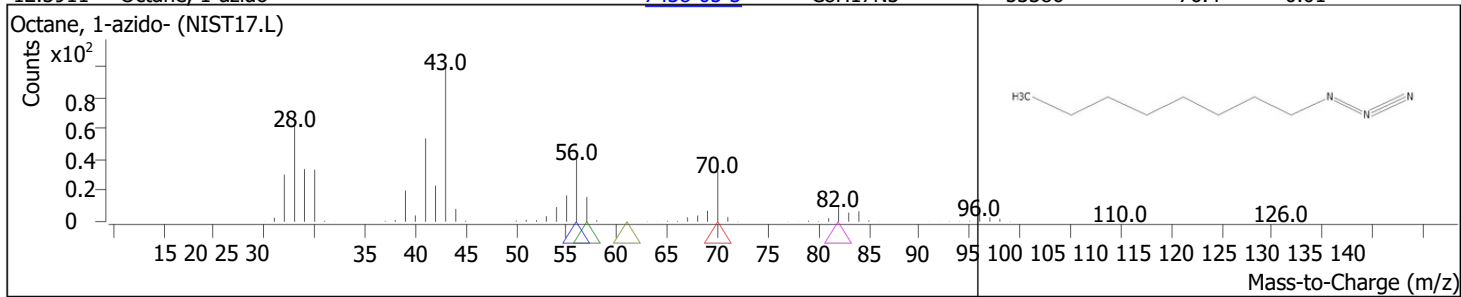
RT	Compound Name	CAS#	Formula	Area	Match Score	Sample	Sample
11.9620	Cyclohexanone, 2-methyl-5-(1-methylethenyl)-, trans-	<a href="#">5948-04-9</a>	C10H16O	4833792	95.5	1.07	1.71



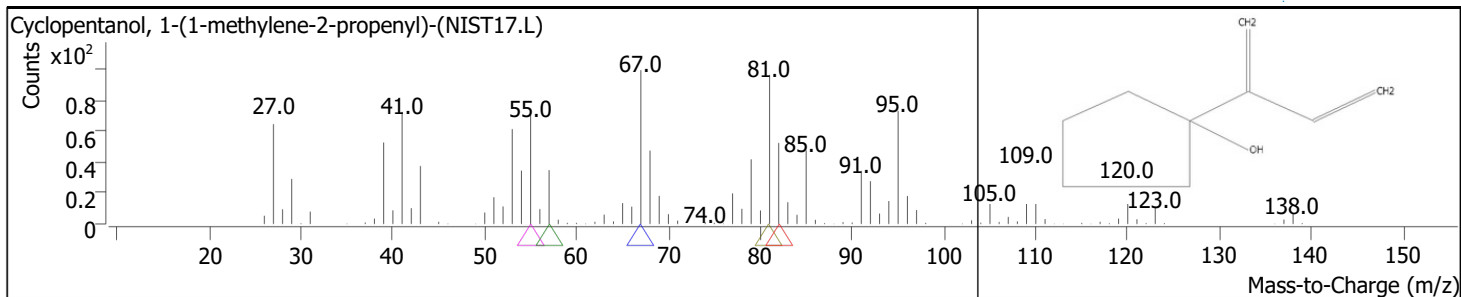
RT	Compound Name	CAS#	Formula	Area	Match Score	Sample	Sample
12.1565	Cyclohexanone, 2-methyl-5-(1-methylethenyl)-, trans-	<a href="#">5948-04-9</a>	C10H16O	538480	94.8	0.12	0.19



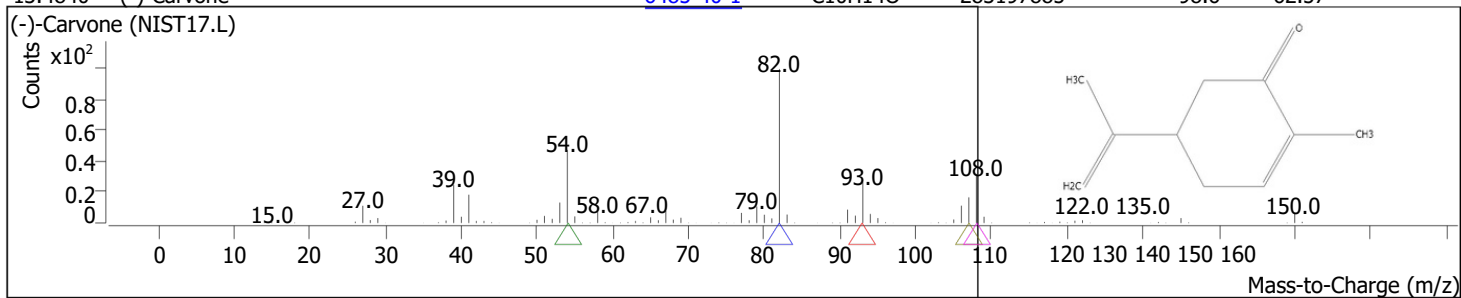
RT	Compound Name	CAS#	Formula	Area	Match Score	Sample	Sample
12.3911	Octane, 1-azido-	<a href="#">7438-05-3</a>	C8H17N3	53386	76.4	0.01	0.02



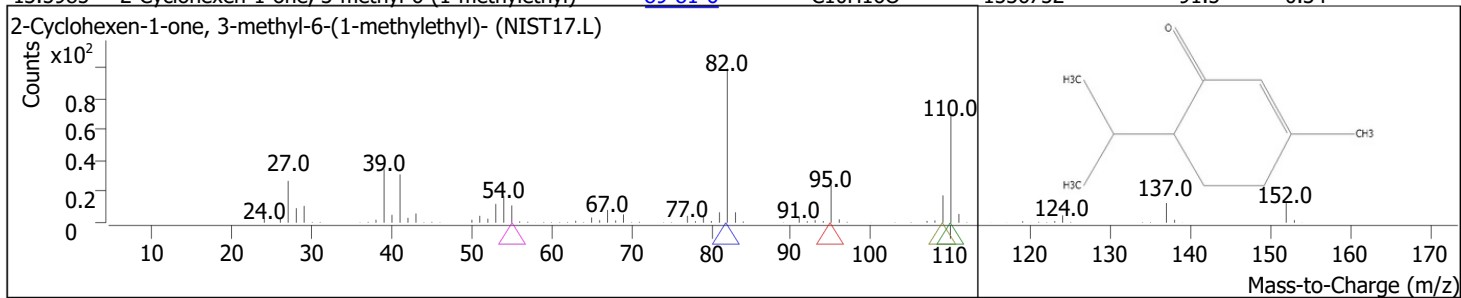
RT	Compound Name	CAS#	Formula	Area	Match Score	Sample	Sample
13.1178	Cyclopentanol, 1-(1-methylene-2-propenyl)-	<a href="#">78158-11-9</a>	C9H14O	99298	75.1	0.02	0.04



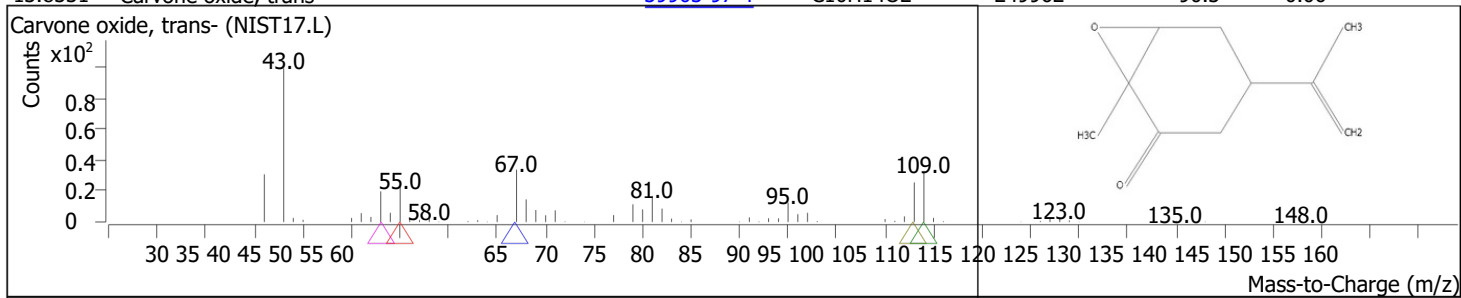
RT	Compound Name	CAS#	Formula	Area	Match Score	Sample	Sample
13.4840	(-)-Carvone	<a href="#">6485-40-1</a>	C10H14O	283197885	98.6	62.57	100.00



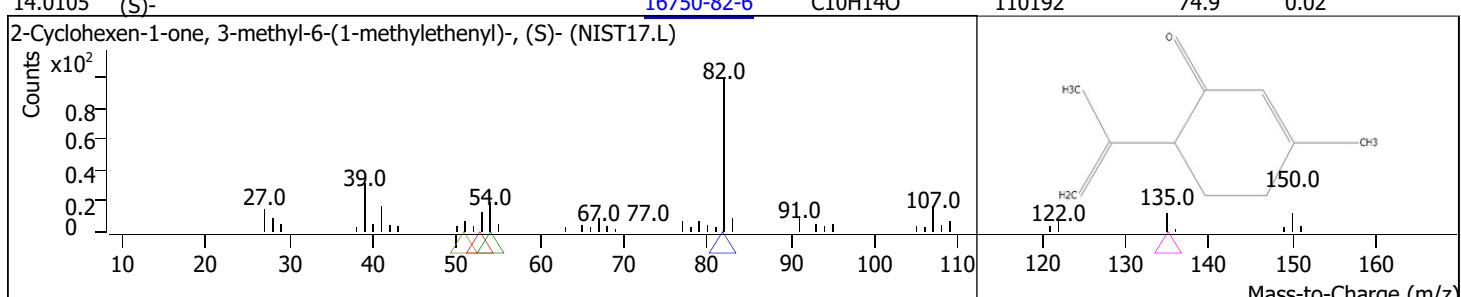
RT	Compound Name	CAS#	Formula	Area	Match Score	Sample	Sample
13.5985	2-Cyclohexen-1-one, 3-methyl-6-(1-methylethyl)-	<a href="#">89-81-6</a>	C10H16O	1536752	91.5	0.34	0.54



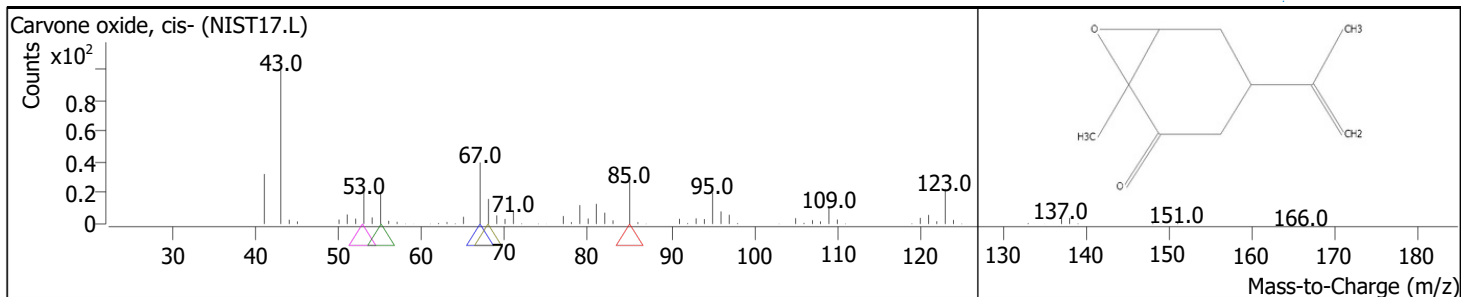
RT	Compound Name	CAS#	Formula	Area	Match Score	Sample	Sample
13.8331	Carvone oxide, trans-	<a href="#">39903-97-4</a>	C10H14O2	249962	90.3	0.06	0.09



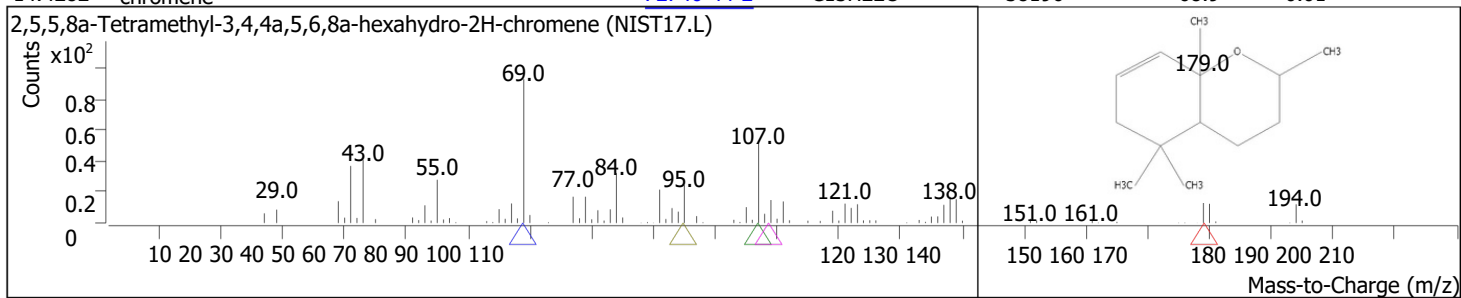
RT	Compound Name	CAS#	Formula	Area	Match Score	Sample	Sample
14.0105	2-Cyclohexen-1-one, 3-methyl-6-(1-methylethenyl)-, (S)-	<a href="#">16750-82-6</a>	C10H14O	110192	74.9	0.02	0.04



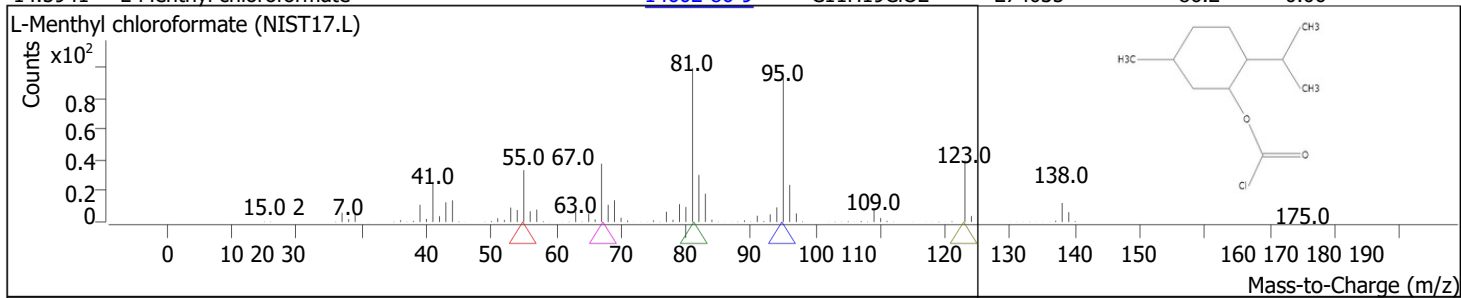
RT	Compound Name	CAS#	Formula	Area	Match Score	Sample	Sample
14.1764	Carvone oxide, cis-	<a href="#">18383-49-8</a>	C10H14O2	277165	94.6	0.06	0.10



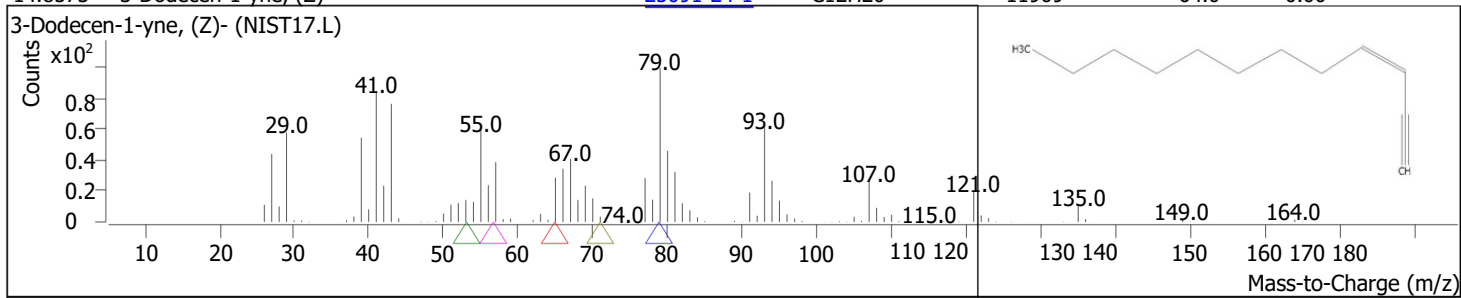
RT	Compound Name	CAS#	Formula	Area	Match Score	Sample	Sample
14.4282	2,5,5,8a-Tetramethyl-3,4,4a,5,6,8a-hexahydro-2H-chromene	<a href="#">72746-44-2</a>	C <sub>13</sub> H <sub>22</sub> O	38196	68.9	0.01	0.01



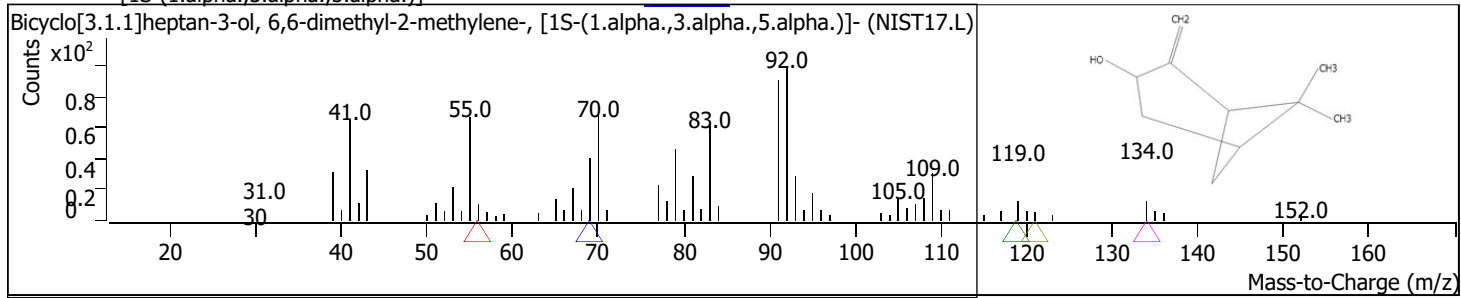
RT	Compound Name	CAS#	Formula	Area	Match Score	Sample	Sample
14.5941	L-Menthyl chloroformate	<a href="#">14602-86-9</a>	C <sub>11</sub> H <sub>19</sub> ClO <sub>2</sub>	274035	86.2	0.06	0.10



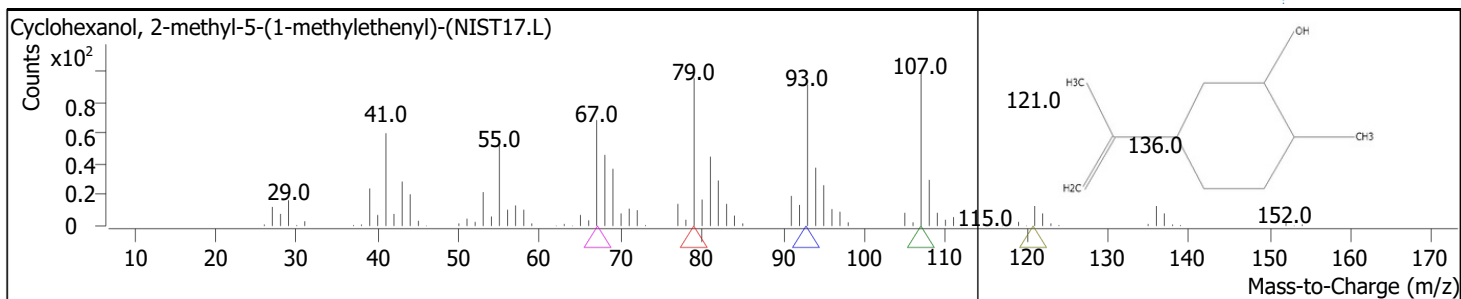
RT	Compound Name	CAS#	Formula	Area	Match Score	Sample	Sample
14.8573	3-Dodecen-1-yne, (Z)-	<a href="#">25091-24-1</a>	C <sub>12</sub> H <sub>20</sub>	11909	64.0	0.00	0.00



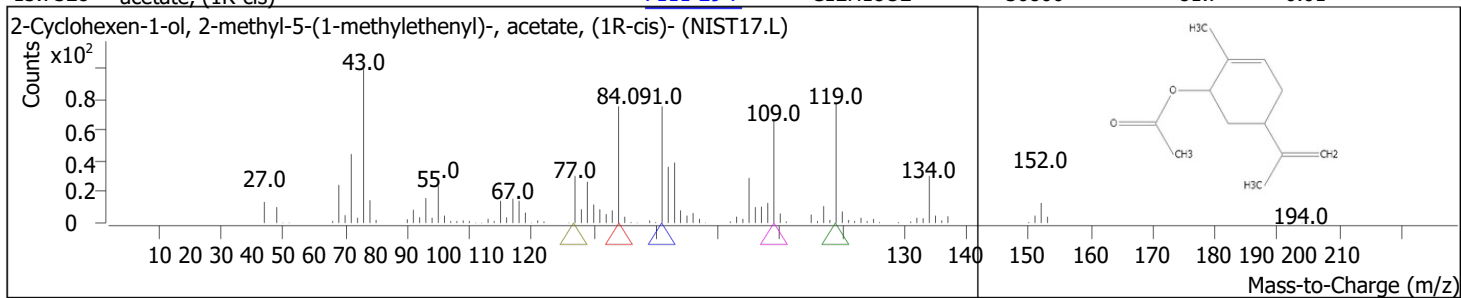
RT	Compound Name	CAS#	Formula	Area	Match Score	Sample	Sample
15.0748	Bicyclo[3.1.1]heptan-3-ol, 6,6-dimethyl-2-methylene-, [1S-(1.alpha.,3.alpha.,5.alpha.)]-	<a href="#">547-61-5</a>	C <sub>10</sub> H <sub>16</sub> O	13929	74.6	0.00	0.00



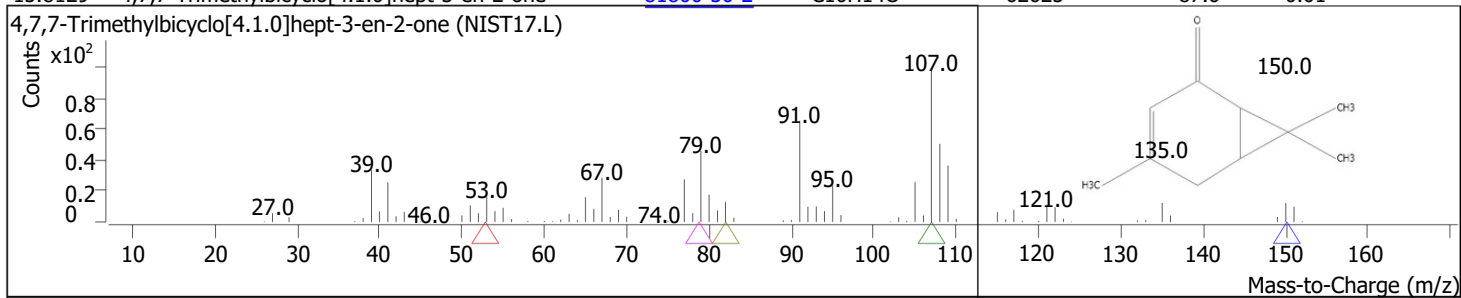
RT	Compound Name	CAS#	Formula	Area	Match Score	Sample	Sample
15.4925	Cyclohexanol, 2-methyl-5-(1-methylethenyl)-	<a href="#">619-01-2</a>	C <sub>10</sub> H <sub>18</sub> O	252021	95.8	0.06	0.09



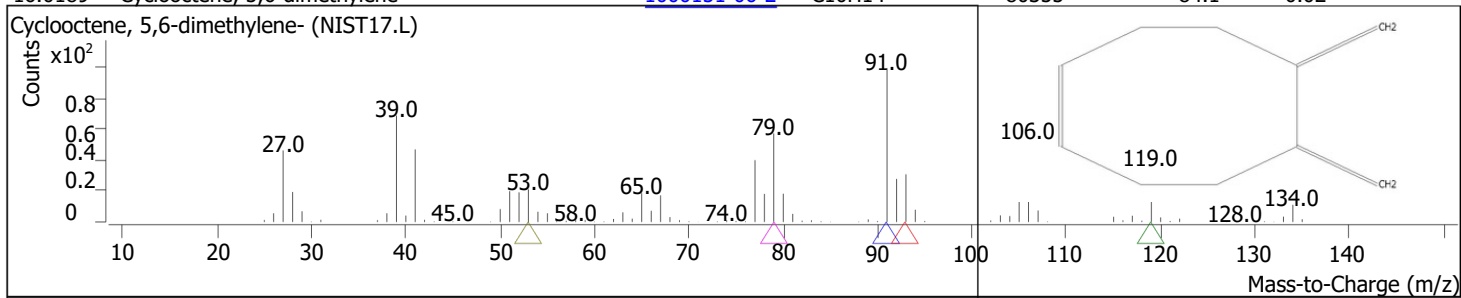
RT	Compound Name	CAS#	Formula	Area	Match Score	Sample	Sample
15.7328	2-Cyclohexen-1-ol, 2-methyl-5-(1-methylethenyl)-, acetate, (1R-cis)-	<a href="#">7111-29-7</a>	C12H18O2	30806	81.7	0.01	0.01



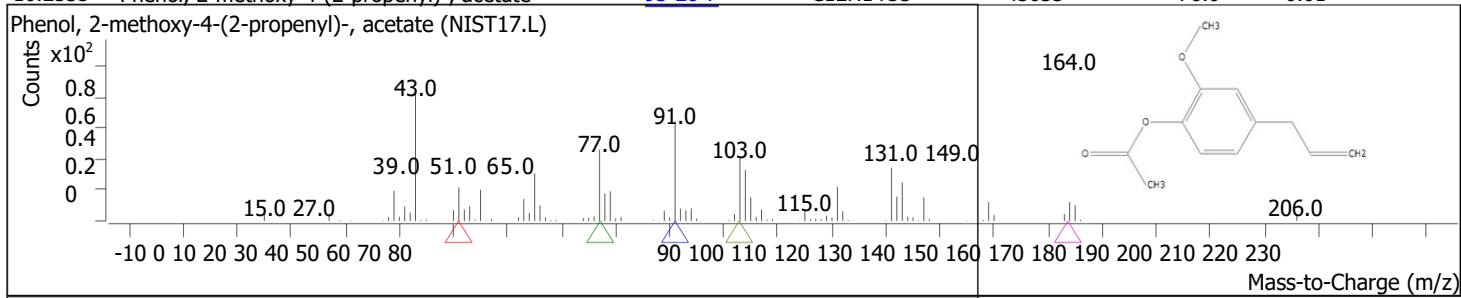
RT	Compound Name	CAS#	Formula	Area	Match Score	Sample	Sample
15.8129	4,7,7-Trimethylbicyclo[4.1.0]hept-3-en-2-one	<a href="#">81800-50-2</a>	C10H14O	62625	87.0	0.01	0.02



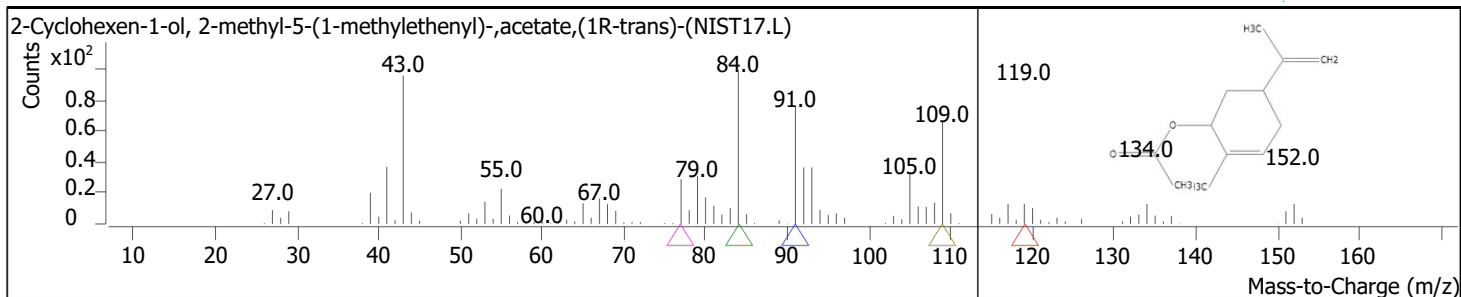
RT	Compound Name	CAS#	Formula	Area	Match Score	Sample	Sample
16.0189	Cyclooctene, 5,6-dimethylene-	<a href="#">1000151-06-2</a>	C10H14	80355	84.1	0.02	0.03



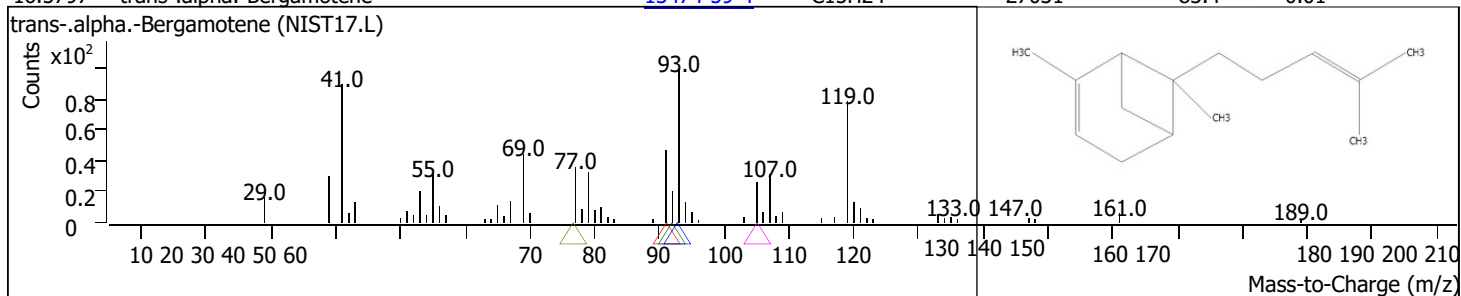
RT	Compound Name	CAS#	Formula	Area	Match Score	Sample	Sample
16.2535	Phenol, 2-methoxy-4-(2-propenyl)-, acetate	<a href="#">93-28-7</a>	C12H14O3	45033	76.0	0.01	0.02



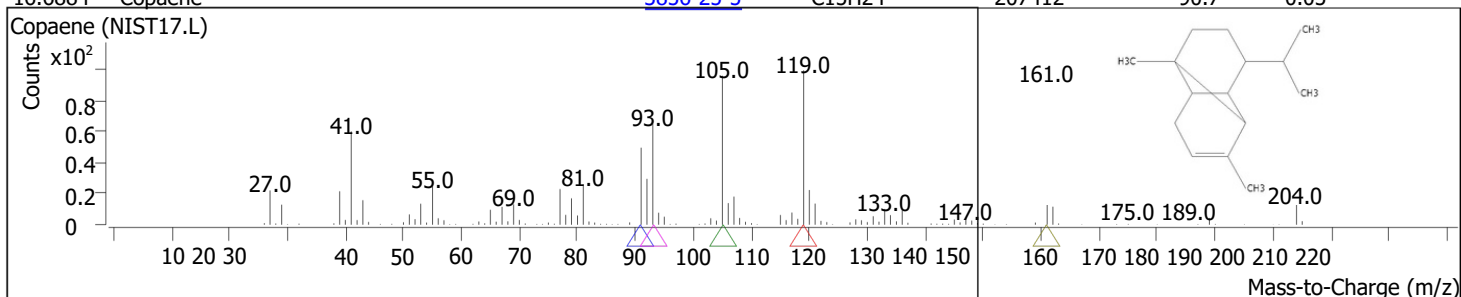
RT	Compound Name	CAS#	Formula	Area	Match Score	Sample	Sample
16.3908	2-Cyclohexen-1-ol, 2-methyl-5-(1-methylethenyl)-, acetate, (1R-trans)-	<a href="#">7053-79-4</a>	C12H18O2	521358	96.0	0.12	0.18



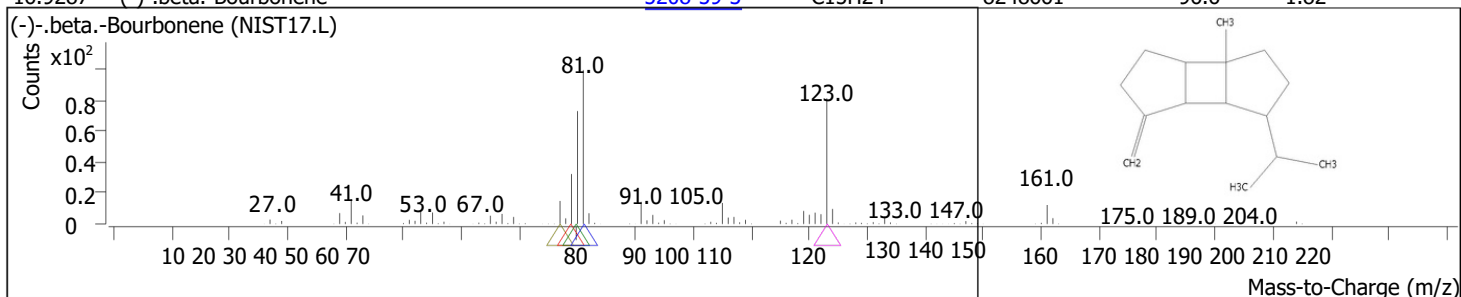
RT	Compound Name	CAS#	Formula	Area	Match Score	Sample	Sample
16.5797	trans- $\alpha$ -Bergamotene	<a href="#">13474-59-4</a>	C <sub>15</sub> H <sub>24</sub>	27031	83.4	0.01	0.01



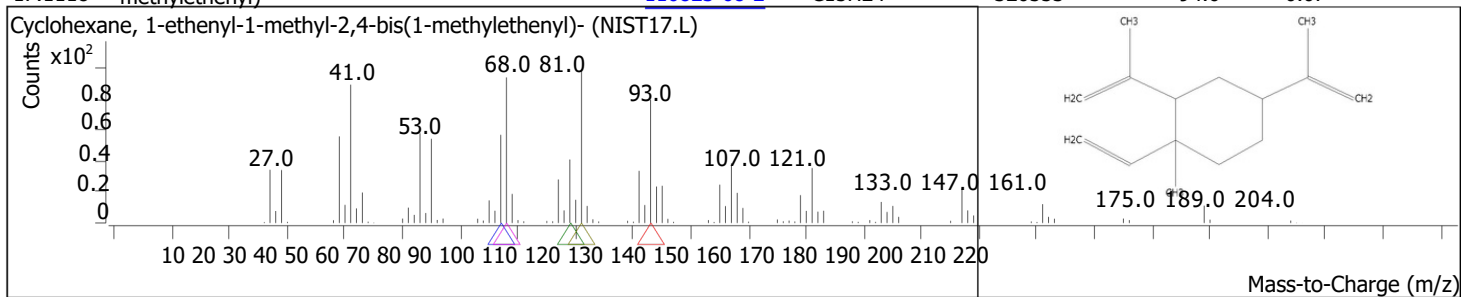
RT	Compound Name	CAS#	Formula	Area	Match Score	Sample	Sample
16.6884	Copaene	<a href="#">3856-25-5</a>	C <sub>15</sub> H <sub>24</sub>	207412	90.7	0.05	0.07



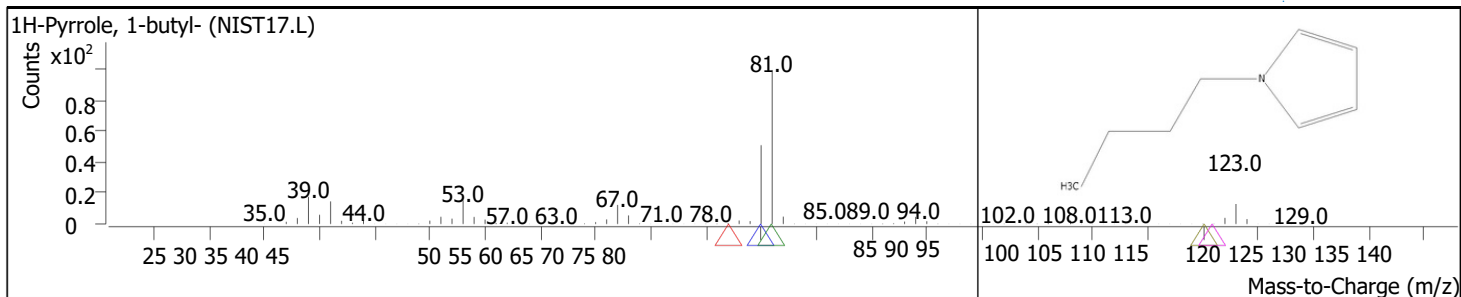
RT	Compound Name	CAS#	Formula	Area	Match Score	Sample	Sample
16.9287	(-)- $\beta$ -Bourbonene	<a href="#">5208-59-3</a>	C <sub>15</sub> H <sub>24</sub>	8248661	96.6	1.82	2.91



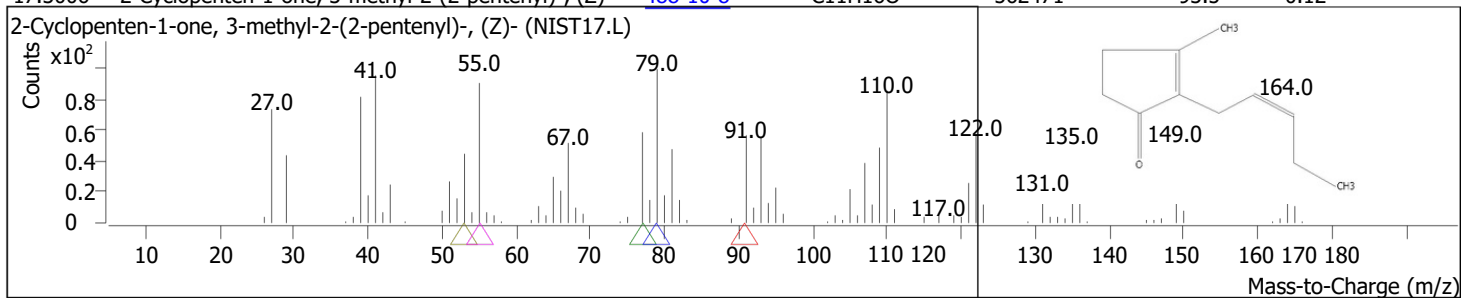
RT	Compound Name	CAS#	Formula	Area	Match Score	Sample	Sample
17.1118	Cyclohexane, 1-ethenyl-1-methyl-2,4-bis(1-methylethenyl)-	<a href="#">110823-68-2</a>	C <sub>15</sub> H <sub>24</sub>	320553	94.6	0.07	0.11



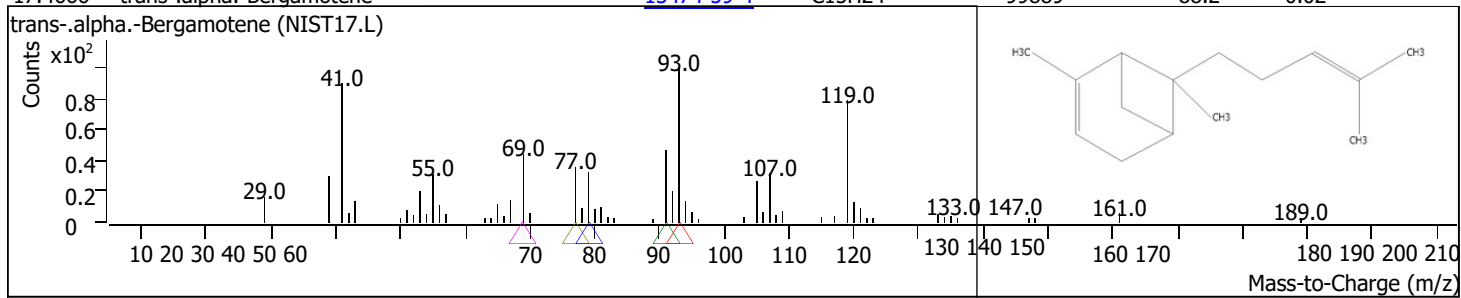
RT	Compound Name	CAS#	Formula	Area	Match Score	Sample	Sample
17.1805	1H-Pyrrole, 1-butyl-	<a href="#">589-33-3</a>	C <sub>8</sub> H <sub>13</sub> N	63219	66.2	0.01	0.02



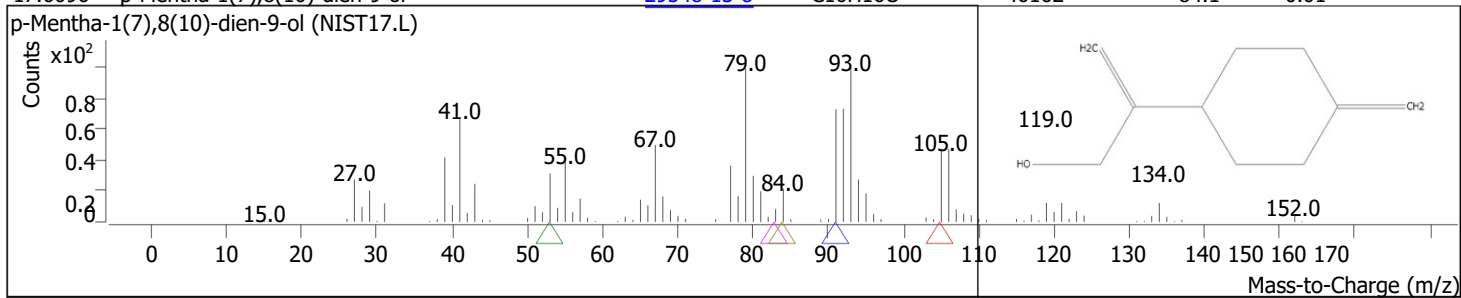
RT	Compound Name	CAS#	Formula	Area	Match Score	Sample	Sample
17.3006	2-Cyclopenten-1-one, 3-methyl-2-(2-pentenyl)-, (Z)-	<a href="#">488-10-8</a>	C11H16O	562471	93.5	0.12	0.20



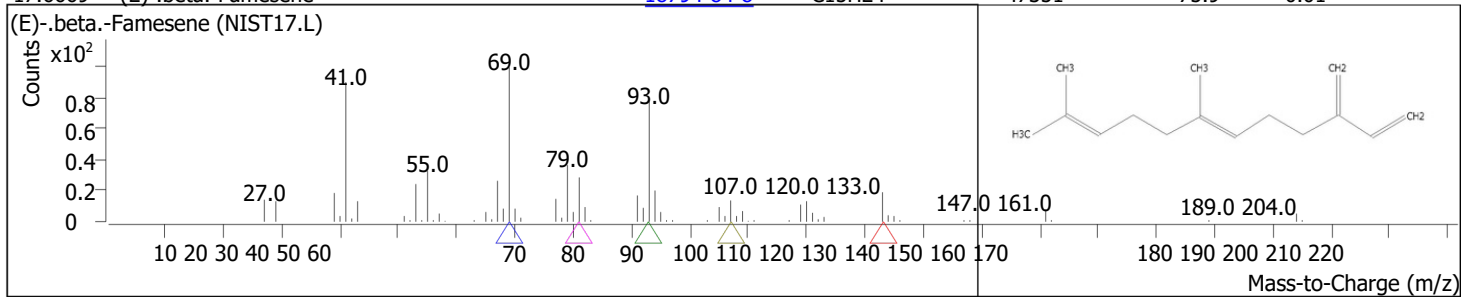
RT	Compound Name	CAS#	Formula	Area	Match Score	Sample	Sample
17.4666	trans- $\alpha$ -Bergamotene	<a href="#">13474-59-4</a>	C15H24	99889	88.2	0.02	0.04



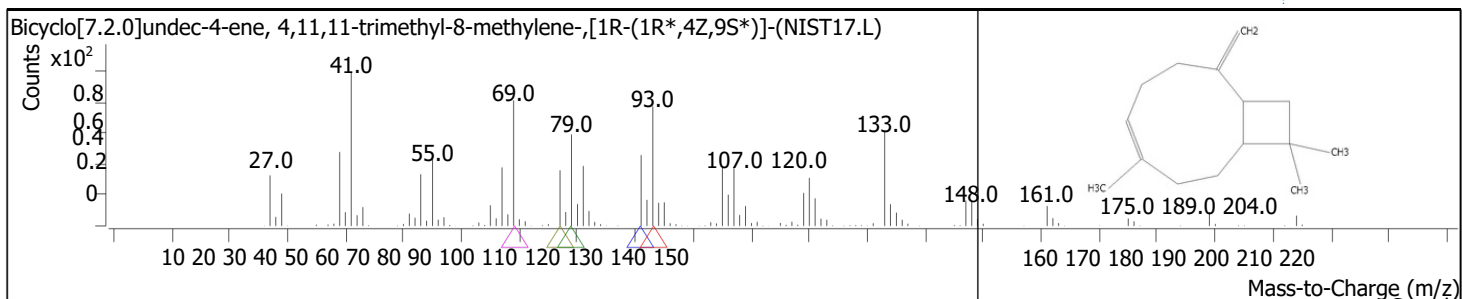
RT	Compound Name	CAS#	Formula	Area	Match Score	Sample	Sample
17.6096	p-Mentha-1(7),8(10)-dien-9-ol	<a href="#">29548-13-8</a>	C10H16O	46162	84.1	0.01	0.02



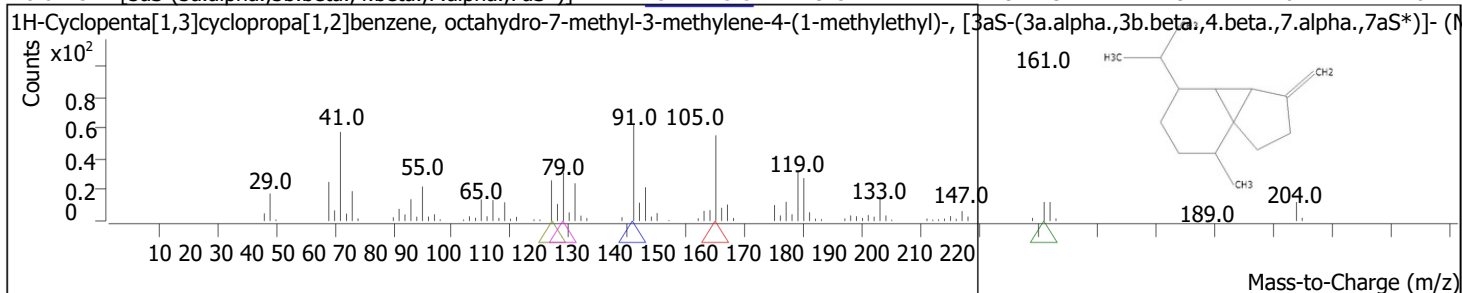
RT	Compound Name	CAS#	Formula	Area	Match Score	Sample	Sample
17.6669	(E)- $\beta$ -Famesene	<a href="#">18794-84-8</a>	C15H24	47351	75.9	0.01	0.02



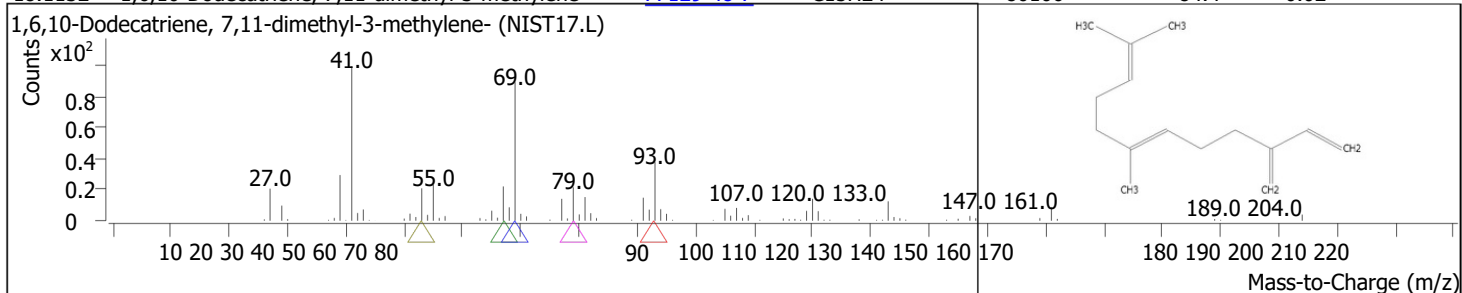
RT	Compound Name	CAS#	Formula	Area	Match Score	Sample	Sample
17.7870	Bicyclo[7.2.0]undec-4-ene, 4,11,11-trimethyl-8-methylene-, [1R*(1R*,4Z,9S*)]-	<a href="#">118-65-0</a>	C15H24	4753619	96.1	1.05	1.68



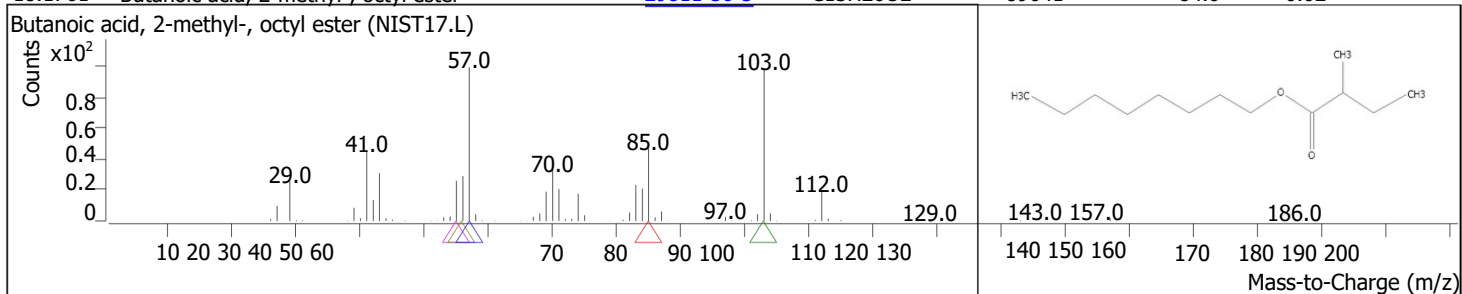
RT	Compound Name	CAS#	Formula	Area	Match Score	Sample	Sample
18.0273	1H-Cyclopenta[1,3]cyclopropa[1,2]benzene, octahydro-7-methyl-3-methylene-4-(1-methylethyl)-, [3aS-(3a.alpha.,3b.beta.,4.beta.,7.alpha.,7aS*)]-	<a href="#">13744-15-5</a>	C15H24	494413	94.2	0.11	0.17



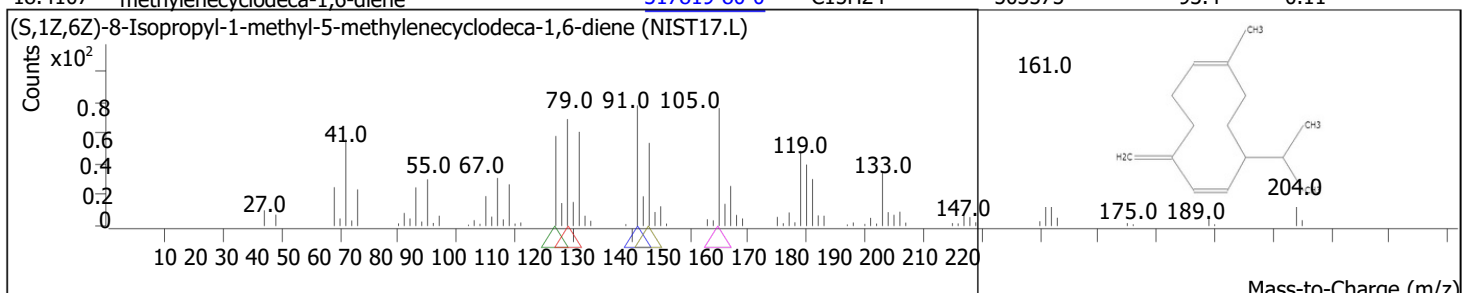
RT	Compound Name	CAS#	Formula	Area	Match Score	Sample	Sample
18.1132	1,6,10-Dodecatriene, 7,11-dimethyl-3-methylene-	<a href="#">77129-48-7</a>	C15H24	80106	84.4	0.02	0.03



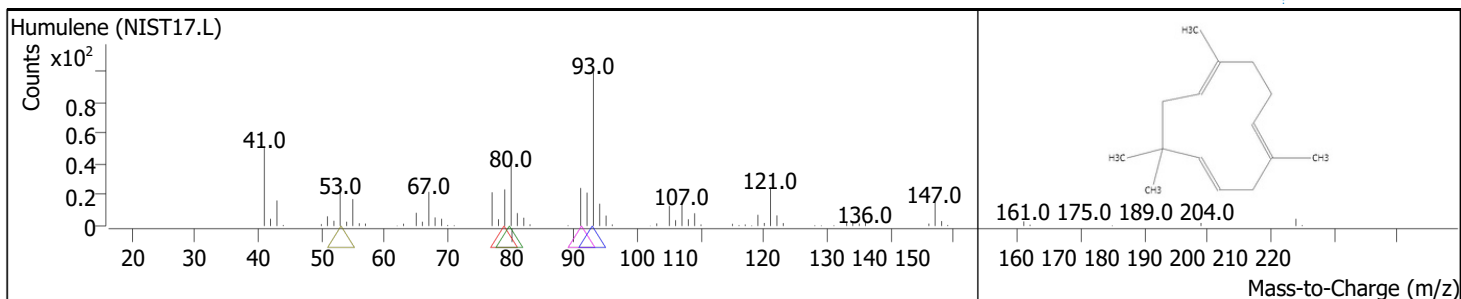
RT	Compound Name	CAS#	Formula	Area	Match Score	Sample	Sample
18.1761	Butanoic acid, 2-methyl-, octyl ester	<a href="#">29811-50-5</a>	C13H26O2	89641	84.0	0.02	0.03



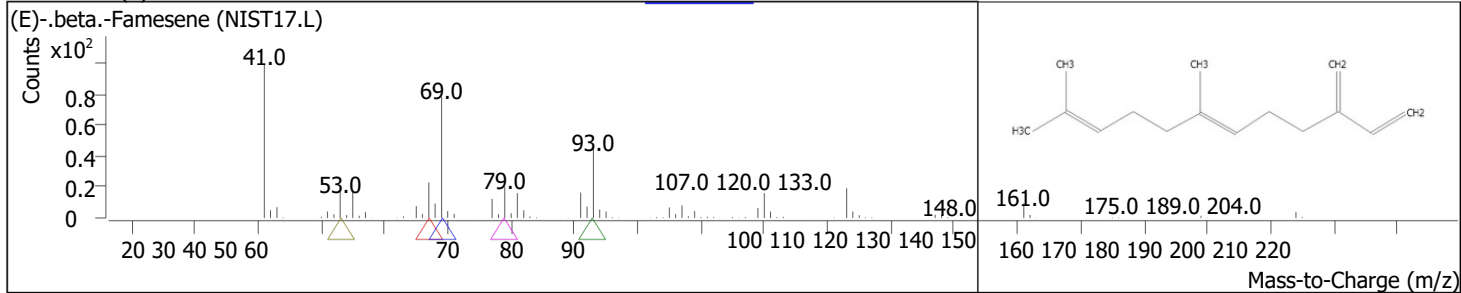
RT	Compound Name	CAS#	Formula	Area	Match Score	Sample	Sample
18.4107	(S,1Z,6Z)-8-Isopropyl-1-methyl-5-methylenecyclodeca-1,6-diene	<a href="#">317819-80-0</a>	C15H24	503575	93.4	0.11	0.18



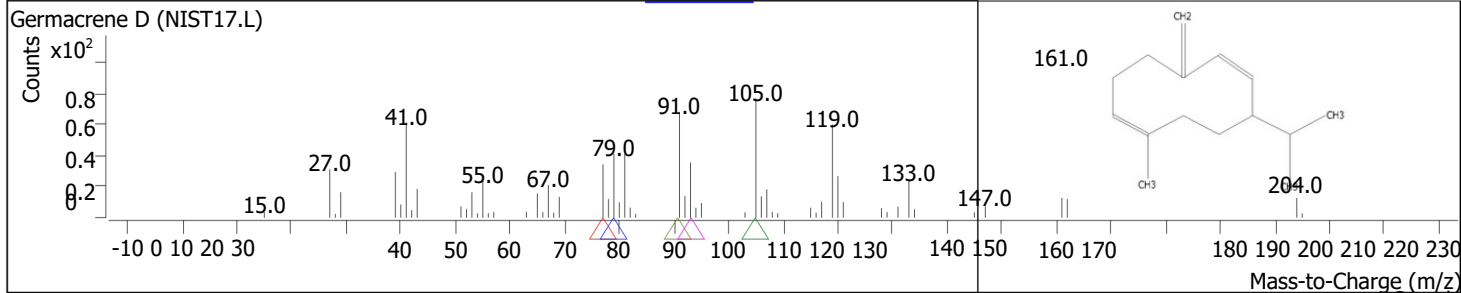
RT	Compound Name	CAS#	Formula	Area	Match Score	Sample	Sample
18.6282	Humulene	<a href="#">6753-98-6</a>	C15H24	234767	93.1	0.05	0.08



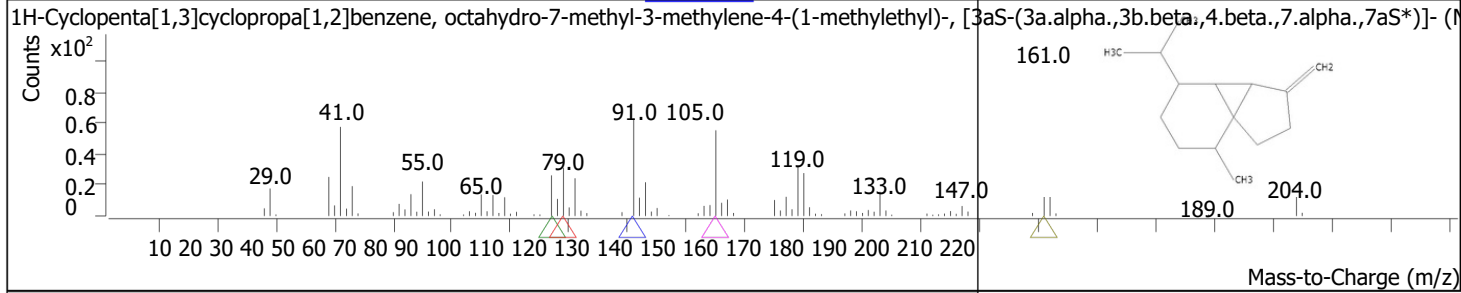
RT	Compound Name	CAS#	Formula	Area	Match Score	Sample	Sample
18.7426	(E)-.beta.-Famesene	<a href="#">18794-84-8</a>	C15H24	2934175	96.4	0.65	1.04



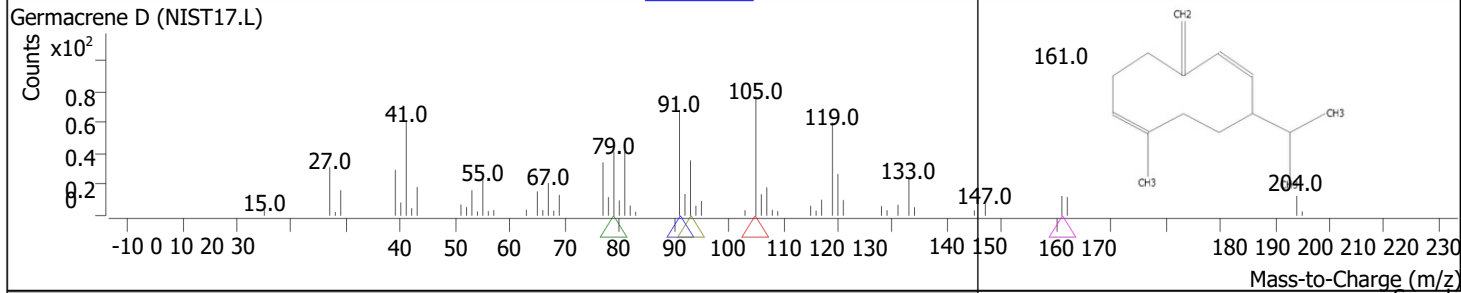
RT	Compound Name	CAS#	Formula	Area	Match Score	Sample	Sample
18.8857	Germacrene D	<a href="#">23986-74-5</a>	C15H24	49127	84.2	0.01	0.02



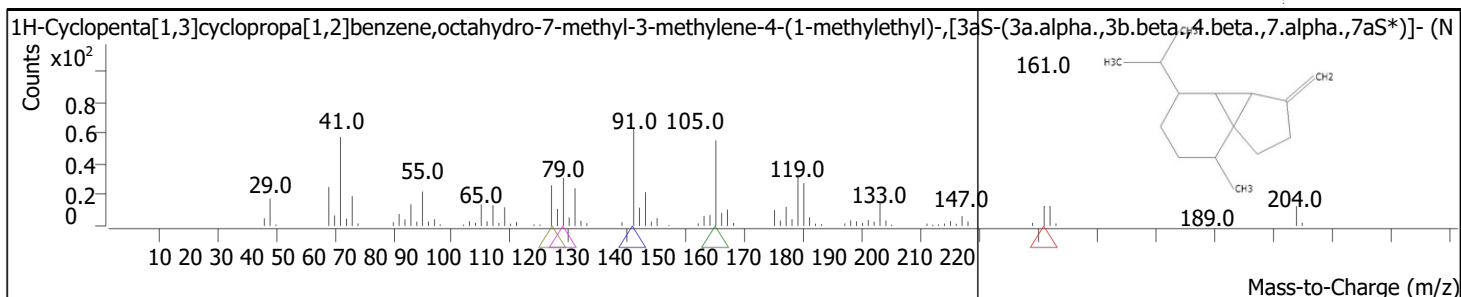
RT	Compound Name	CAS#	Formula	Area	Match Score	Sample	Sample
18.9486	1H-Cyclopenta[1,3]cyclopropa[1,2]benzene, octahydro-7-methyl-3-methylene-4-(1-methylethyl)-, [3aS-(3a.alpha.,3b.beta.,4.beta.,7.alpha.,7aS*)]-	<a href="#">13744-15-5</a>	C15H24	375418	90.4	0.08	0.13



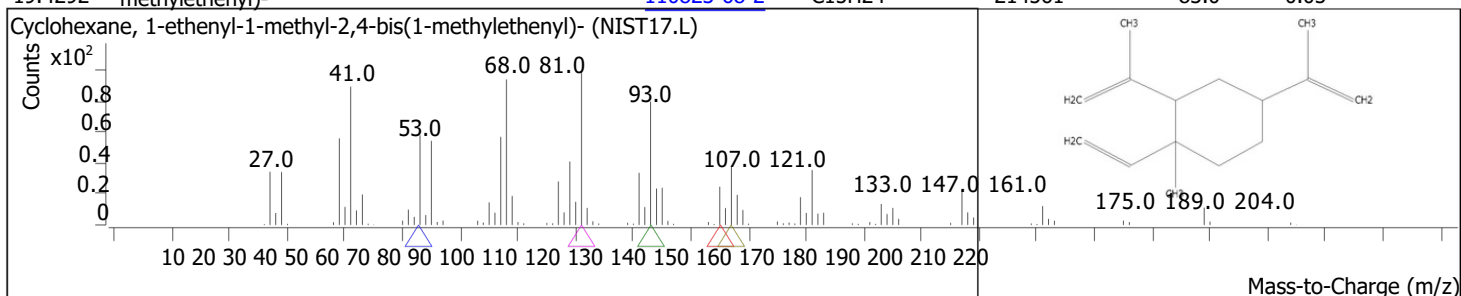
RT	Compound Name	CAS#	Formula	Area	Match Score	Sample	Sample
19.2118	Germacrene D	<a href="#">23986-74-5</a>	C15H24	134643	89.9	0.03	0.05



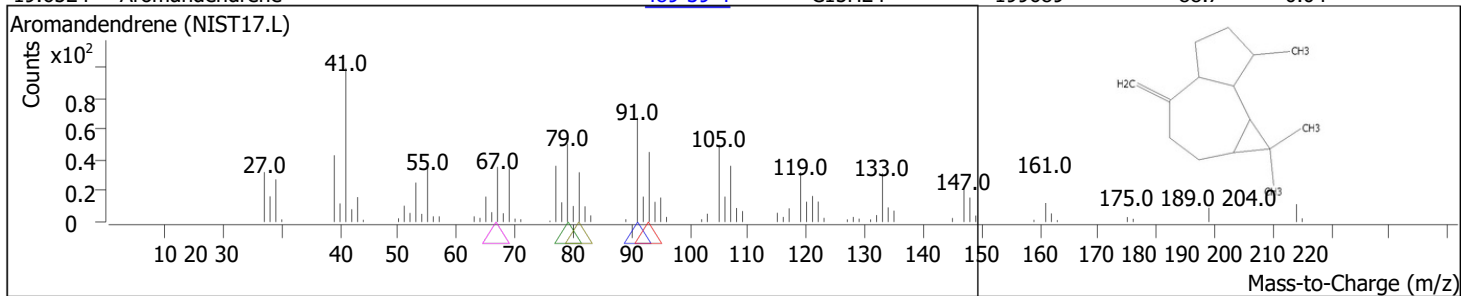
RT	Compound Name	CAS#	Formula	Area	Match Score	Sample	Sample
19.3148	1H-Cyclopenta[1,3]cyclopropa[1,2]benzene, octahydro-7-methyl-3-methylene-4-(1-methylethyl)-, [3aS-(3a.alpha.,3b.beta.,4.beta.,7.alpha.,7aS*)]-	<a href="#">13744-15-5</a>	C15H24	3440307	95.2	0.76	1.21



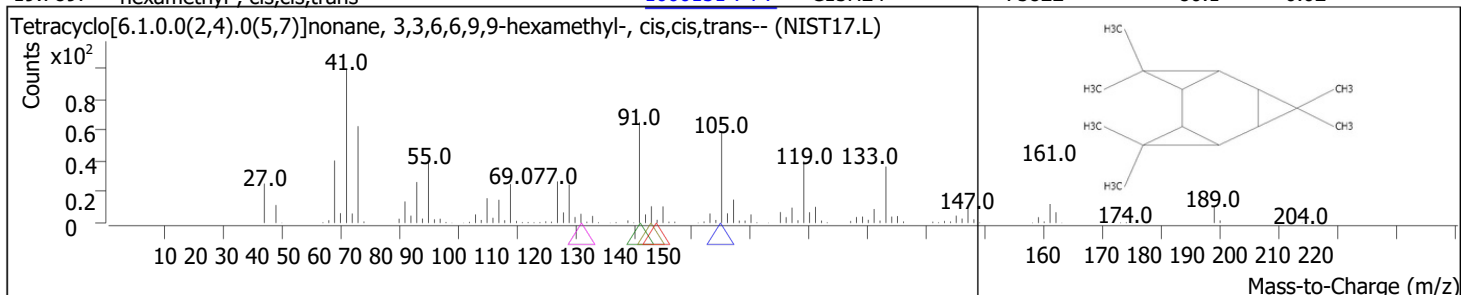
RT	Compound Name	CAS#	Formula	Area	Match Score	Sample	Sample
19.4292	Cyclohexane, 1-ethenyl-1-methyl-2,4-bis(1-methylethenyl)-	<a href="#">110823-68-2</a>	C15H24	214561	83.0	0.05	0.08



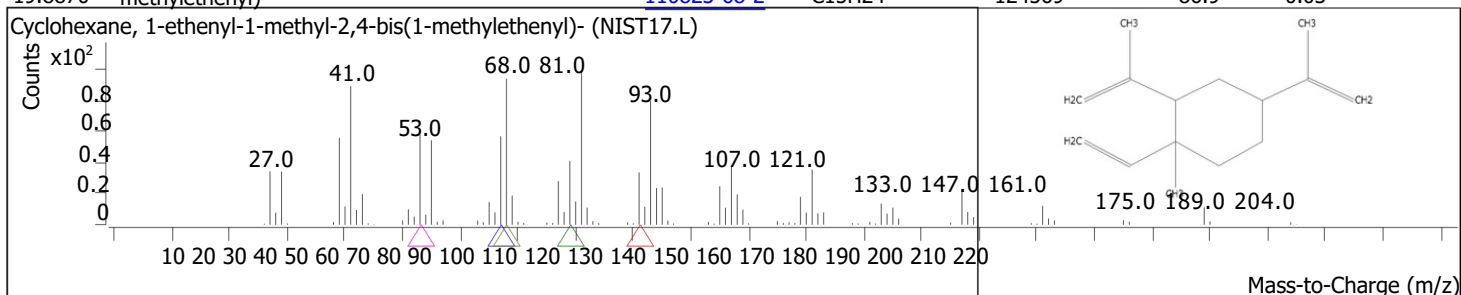
RT	Compound Name	CAS#	Formula	Area	Match Score	Sample	Sample
19.6524	Aromandendrene	<a href="#">489-39-4</a>	C15H24	199689	88.7	0.04	0.07



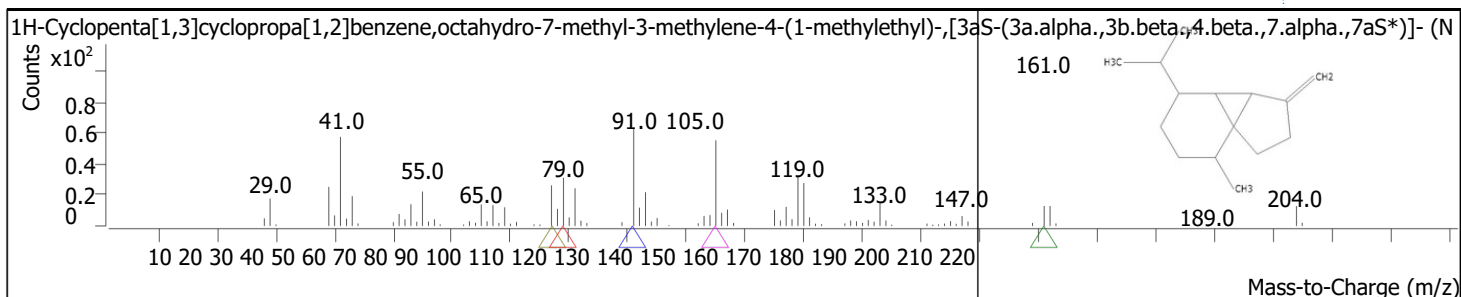
RT	Compound Name	CAS#	Formula	Area	Match Score	Sample	Sample
19.7897	Tetracyclo[6.1.0.0(2,4).0(5,7)]nonane, 3,3,6,6,9,9-hexamethyl-, cis,cis,trans--	<a href="#">1000151-74-7</a>	C15H24	75822	80.1	0.02	0.03



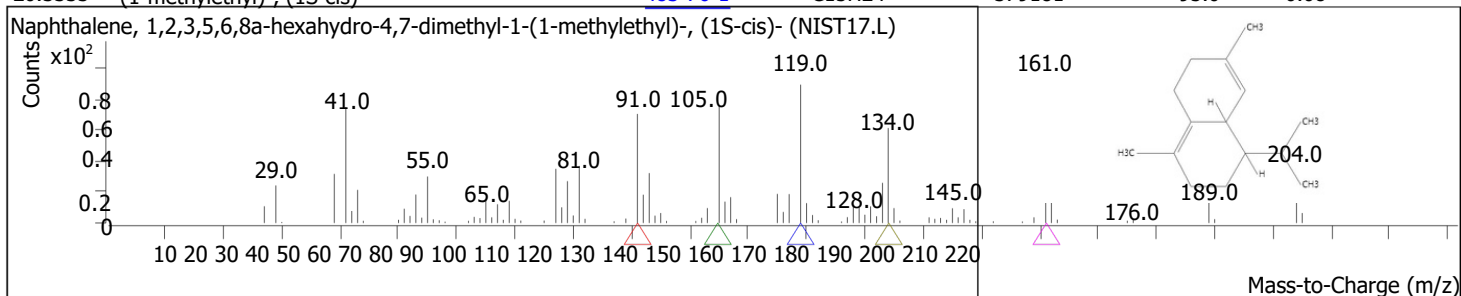
RT	Compound Name	CAS#	Formula	Area	Match Score	Sample	Sample
19.8870	Cyclohexane, 1-ethenyl-1-methyl-2,4-bis(1-methylethenyl)-	<a href="#">110823-68-2</a>	C15H24	124569	86.9	0.03	0.04



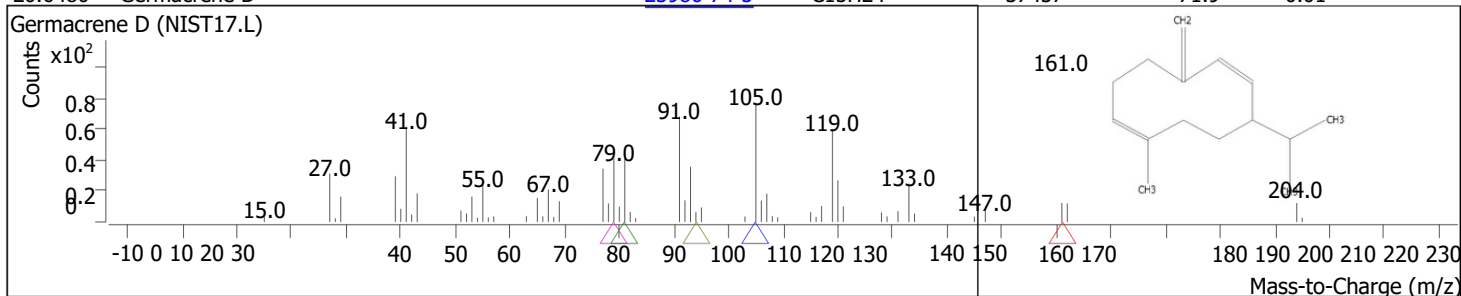
RT	Compound Name	CAS#	Formula	Area	Match Score	Sample	Sample
20.1044	1H-Cyclopenta[1,3]cyclopropa[1,2]benzene, octahydro-7-methyl-3-methylene-4-(1-methylethyl)-, [3aS-(3a.alpha.,3b.beta.,4.beta.,7.alpha.,7aS*)]-	<a href="#">13744-15-5</a>	C15H24	131958	90.8	0.03	0.05



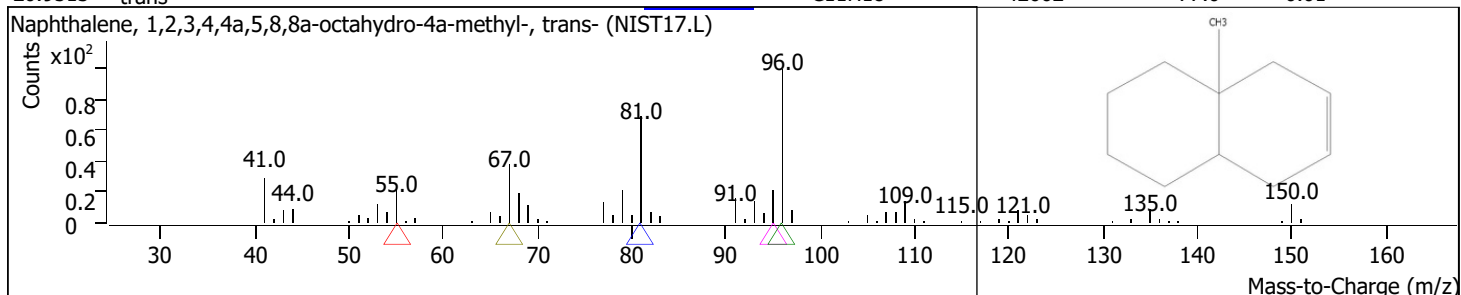
RT	Compound Name	CAS#	Formula	Area	Match Score	Sample	Sample
20.3333	Naphthalene, 1,2,3,5,6,8a-hexahydro-4,7-dimethyl-1-(1-methylethyl)-, (1S-cis)-	<a href="#">483-76-1</a>	C15H24	379181	95.0	0.08	0.13



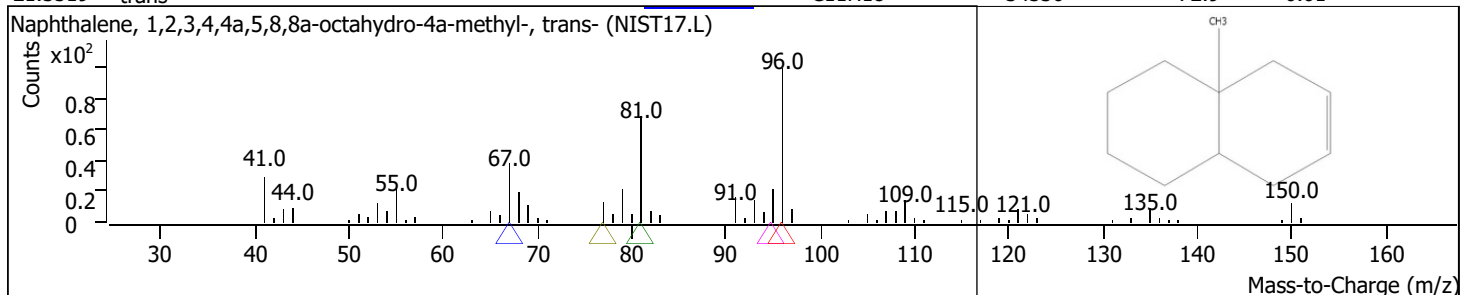
RT	Compound Name	CAS#	Formula	Area	Match Score	Sample	Sample
20.6480	Germacrene D	<a href="#">23986-74-5</a>	C15H24	37457	71.9	0.01	0.01



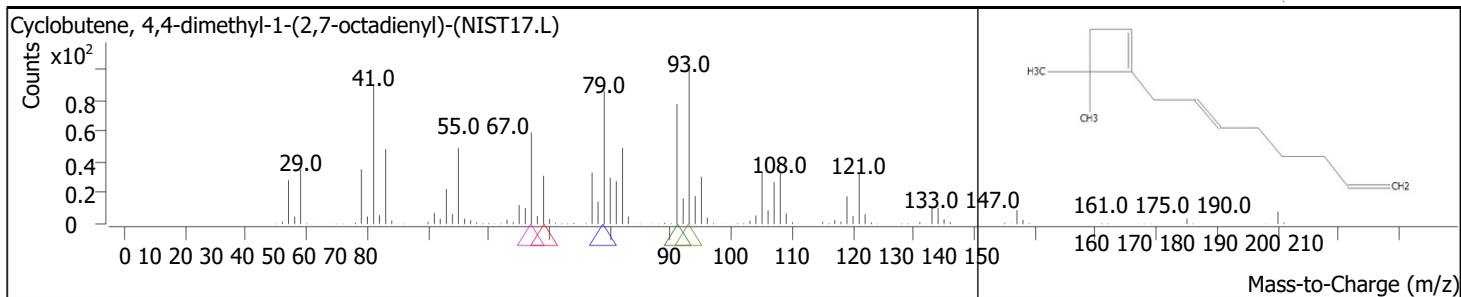
RT	Compound Name	CAS#	Formula	Area	Match Score	Sample	Sample
20.9513	Naphthalene, 1,2,3,4,4a,5,8,8a-octahydro-4a-methyl-, trans-	<a href="#">21789-56-0</a>	C11H18	42662	77.0	0.01	0.02



RT	Compound Name	CAS#	Formula	Area	Match Score	Sample	Sample
21.3519	Naphthalene, 1,2,3,4,4a,5,8,8a-octahydro-4a-methyl-, trans-	<a href="#">21789-56-0</a>	C11H18	34536	72.9	0.01	0.01



RT	Compound Name	CAS#	Formula	Area	Match Score	Sample	Sample
21.7581	Cyclobutene, 4,4-dimethyl-1-(2,7-octadienyl)-	<a href="#">62338-42-5</a>	C14H22	85799	85.2	0.02	0.03



RT	Compound Name	CAS#	Formula	Area	Match Score	Sample	Sample
22.0499	Aromandendrene	<a href="#">489-39-4</a>	C <sub>15</sub> H <sub>24</sub>	315107	92.0	0.07	0.11

