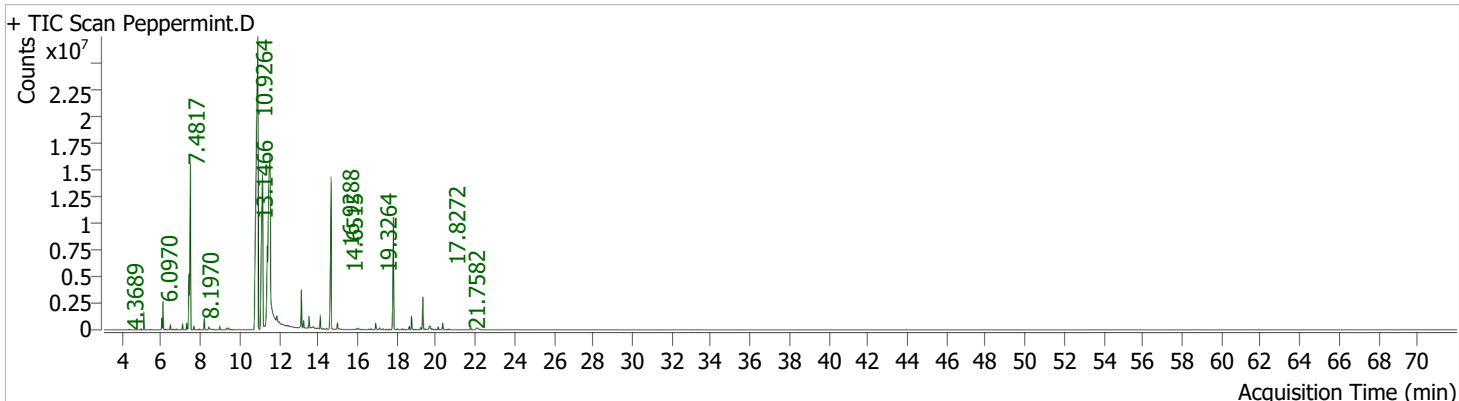


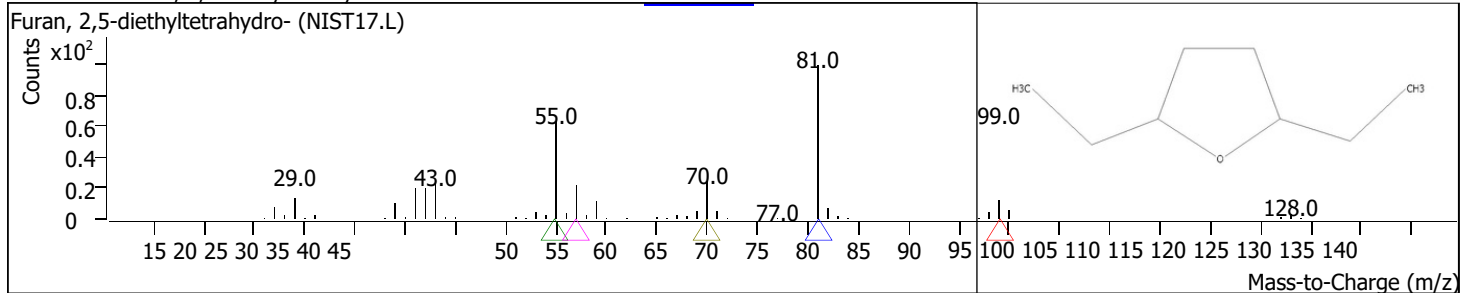
Batch Path D:\MassHunter\Data\A. Kapat\NMR  
 Analysis File Name new2.uaf  
 Analyst Name Basab-GCMS  
 Analysis Time 19-03-2026 20:56:12  
 Data File Name Peppermint.D Data Path Name D:\MassHunter\Data\A. Kapat\NMR  
 Sample Name Acq PEP-BDU-2507 / PEPPERWOODD Sample Type Sample  
 Method File Acq Bio Oil pyrolysis4\_new Acq Method Path D:\MassHunter\GCMS\methods\  
 Time Instrument 11-03-2026 21:11:22 Operator  
 Name GCMS Dilution 1



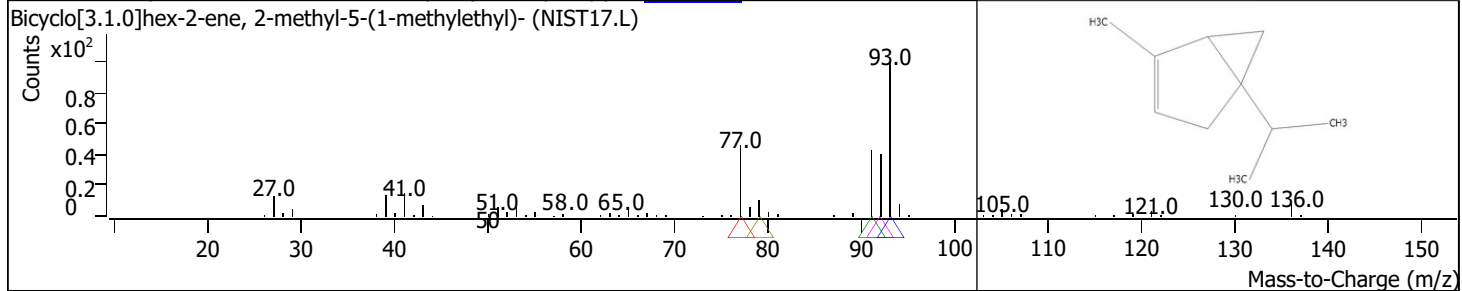
RT	Compound Name	CAS#	Formula	Area	Match Score	Sample	Sample
4.3689	Furan, 2,5-diethyltetrahydro-	<a href="#">41239-48-9</a>	C8H16O	119376	92.9	0.02	0.07
4.9869	Bicyclo[3.1.0]hex-2-ene, 2-methyl-5-(1-methylethyl)-	<a href="#">2867-05-2</a>	C10H16	179725	96.2	0.03	0.10
5.1185	.alpha.-Pinene	<a href="#">80-56-8</a>	C10H16	2842103	98.1	0.49	1.56
5.4504	Santolina triene	<a href="#">2153-66-4</a>	C10H16	76363	91.4	0.01	0.04
6.0341	Bicyclo[3.1.0]hexane, 4-methylene-1-(1-methylethyl)-	<a href="#">3387-41-5</a>	C10H16	2106592	98.2	0.36	1.15
6.0970	.beta.-Pinene	<a href="#">127-91-3</a>	C10H16	5035217	98.7	0.86	2.76
6.2000	1-Octen-3-ol	<a href="#">3391-86-4</a>	C8H16O	151718	93.8	0.03	0.08
6.4689	.beta.-Myrcene	<a href="#">123-35-3</a>	C10H16	934963	94.7	0.16	0.51
6.5948	3-Octanol	<a href="#">589-98-0</a>	C8H18O	129616	93.5	0.02	0.07
6.7722	Cyclohexane, 1-methylene-4-(1-methylethenyl)-	<a href="#">499-97-8</a>	C10H16	201738	90.9	0.03	0.11
7.0869	Bicyclo[4.1.0]hept-2-ene, 3,7,7-trimethyl-, (1S-cis)-	<a href="#">4497-92-1</a>	C10H16	1129335	97.4	0.19	0.62
7.2986	p-Cymene	<a href="#">99-87-6</a>	C10H14	1374180	97.0	0.24	0.75
7.4131	Limonene	<a href="#">138-86-3</a>	C10H16	13739935	98.0	2.36	7.52
7.4817	Eucalyptol	<a href="#">470-82-6</a>	C10H18O	37339567	96.4	6.40	20.44
7.6648	trans-.beta.-Ocimene	<a href="#">3779-61-1</a>	C10H16	696679	98.0	0.12	0.38
7.9338	1,3,6-Octatriene, 3,7-dimethyl-, (Z)-	<a href="#">3338-55-4</a>	C10H16	161023	95.1	0.03	0.09
8.1970	.gamma.-Terpinene	<a href="#">99-85-4</a>	C10H16	2274771	97.9	0.39	1.25
8.4259	Bicyclo[3.1.0]hexan-2-ol, 2-methyl-5-(1-methylethyl)-, (1.alpha.,2.beta.,5.alpha.)-	<a href="#">15537-55-0</a>	C10H18O	1282844	94.6	0.22	0.70
8.9866	Cyclohexene, 4-methyl-3-(1-methylethylidene)-	<a href="#">99805-90-0</a>	C10H16	695916	96.8	0.12	0.38
9.3643	Linalool	<a href="#">78-70-6</a>	C10H18O	711787	95.2	0.12	0.39
9.4387	Butanoic acid, 2-methyl-, 2-methylbutyl ester	<a href="#">2445-78-5</a>	C10H20O2	409982	88.9	0.07	0.22
9.5588	Butanoic acid, 3-methyl-, 2-methylbutyl ester	<a href="#">2445-77-4</a>	C10H20O2	155671	88.1	0.03	0.09
10.9264	l-Menthone	<a href="#">14073-97-3</a>	C10H18O	182682902	98.9	31.33	100.00
11.1610	Cyclohexanol, 5-methyl-2-(1-methylethyl)-, (1.alpha.,2.beta.,5.beta.)-	<a href="#">490-99-3</a>	C10H20O	71360349	90.2	12.24	39.06
11.4071	Cyclohexanol, 1-methyl-4-(1-methylethyl)-	<a href="#">21129-27-1</a>	C10H20O	20692651	98.9	3.55	11.33
11.5387	Cyclohexanol, 5-methyl-2-(1-methylethyl)-, (1.alpha.,2.beta.,5.alpha.)-(./.-.)-	<a href="#">15356-70-4</a>	C10H20O	115152221	99.0	19.75	63.03
11.8877	.alpha.-Terpineol	<a href="#">98-55-5</a>	C10H18O	4910052	95.8	0.84	2.69
12.4141	Benzofuran, 4,7-dimethyl-	<a href="#">28715-26-6</a>	C10H10O	66628	65.8	0.01	0.04
12.4771	5-(Furan-3-yl)-2-methylpent-1-en-3-ol	<a href="#">72075-28-6</a>	C10H14O2	110341	61.6	0.02	0.06
13.1466	Cyclohexanone, 5-methyl-2-(1-methylethylidene)-	<a href="#">15932-80-6</a>	C10H16O	8348483	97.7	1.43	4.57

RT	Compound Name	CAS#	Formula	Area	Match Score	Sample	Sample
13.2553	(-)-Carvone	<a href="#">6485-40-1</a>	C10H14O	1525381	96.1	0.26	0.83
13.5299	2-Cyclohexen-1-one, 3-methyl-6-(1-methylethyl)-	<a href="#">89-81-6</a>	C10H16O	2534558	96.4	0.43	1.39
13.7245	Levomenthol	<a href="#">2216-51-5</a>	C10H20O	1178122	88.0	0.20	0.64
13.9820	Cyclopentane, 1-isobutylidene-3-methyl-	<a href="#">1000150-62-1</a>	C10H18	147751	84.4	0.03	0.08
14.1021	Cyclohexanol, 5-methyl-2-(1-methylethyl)-, acetate	<a href="#">16409-45-3</a>	C12H22O2	2639983	96.6	0.45	1.45
14.2738	3-Methyl-hepta-1,6-dien-3-ol	<a href="#">34780-69-3</a>	C8H14O	101652	71.1	0.02	0.06
14.4168	2,5,5,8a-Tetramethyl-3,4,4a,5,6,8a-hexahydro-2H-chromene	<a href="#">72746-44-2</a> <del><a href="#">89-48-5</a></del>	C13H22O	172986	89.9	0.03	0.09
14.6515	Menthyl acetate	<a href="#">16409-45-3</a>	C12H22O2	44868439	98.2	7.69	24.56
14.9776	Cyclohexanol, 5-methyl-2-(1-methylethyl)-, acetate	<a href="#">22567-21-1</a>	C12H22O2	1467712	96.5	0.25	0.80
15.0749	Cyclohexanol, 2-methyl-5-(1-methylethenyl)-, [1S-(1.alpha.,2.beta.,5.alpha.)]-	<a href="#">16642-41-4</a>	C10H18O	268990	74.1	0.05	0.15
15.9504	3,6-Dimethyl-4,5,6,7-tetrahydrobenzofuran-2(3H)-one	<del><a href="#">16642-41-4</a></del>	C10H14O2	209810	88.9	0.04	0.11
16.0247	Bicyclo[4.1.0]heptane,-3-cyclopropyl,-7-hydroxymethyl, trans	<a href="#">1000223-00-6</a>	C11H18O	621861	83.0	0.11	0.34
16.5798	Ylangene	<a href="#">14912-44-8</a>	C15H24	130312	87.9	0.02	0.07
16.6942	Copaene	<a href="#">3856-25-5</a>	C15H24	232396	93.5	0.04	0.13
16.9288	(-)-.beta.-Bourbonene	<a href="#">5208-59-3</a>	C15H24	1624057	95.5	0.28	0.89
17.1234	Cyclohexane, 1-ethenyl-1-methyl-2,4-bis(1-methylethenyl)-	<a href="#">110823-68-2</a> <del><a href="#">3853-83-6</a></del> <del><a href="#">74742-35-1</a></del>	C15H24	547851	96.3	0.09	0.30
17.3008	1H-Benzocycloheptene, 2,4a,5,6,7,8,9,9a-octahydro-3,5,5-trimethyl-9-methylene-, (4aS-cis)-	<a href="#">29548-13-8</a>	C15H24	247721	86.2	0.04	0.14
17.4781	Cyclohexane, 1,5-diethenyl-3-methyl-2-methylene-, (1.alpha.,3.alpha.,5.alpha.)-	<a href="#">87-44-5</a>	C12H18	86104	83.4	0.01	0.05
17.6269	p-Mentha-1(7),8(10)-dien-9-ol	<a href="#">13744-15-5</a>	C10H16O	158167	90.1	0.03	0.09
17.8272	Caryophyllene	<a href="#">13744-15-5</a>	C15H24	29047461	98.0	4.98	15.90
	1H-Cyclopenta[1,3]cyclopropa[1,2]benzene, octahydro-7-methyl-3-methylene-4-(1-methylethyl)-, [3aS-(3a.alpha.,3b.beta.,4.beta.,7.alpha.,7aS*)]-	<a href="#">13744-15-5</a>	C15H24	187284	92.3	0.03	0.10
18.0332	Aromandendrene	<a href="#">489-39-4</a>	C15H24	253675	93.8	0.04	0.14
18.2792	1,4-Methanocycloocta[d]pyridazine, 1,4,4a,5,6,9,10,10a-octahydro-11,11-dimethyl-, (1.alpha.,4.alpha.,4a.alpha.,10a.alpha.)-	<a href="#">1000221-85-9</a>	C13H20N2	64453	85.3	0.01	0.04
18.4166	Humulene	<a href="#">6753-98-6</a>	C15H24	817004	96.1	0.14	0.45
18.6340	(E)-.beta.-Famesene	<a href="#">18794-84-8</a>	C15H24	3128136	96.4	0.54	1.71
18.7542	1H-Cyclopenta[1,3]cyclopropa[1,2]benzene, octahydro-7-methyl-3-methylene-4-(1-methylethyl)-, [3aS-(3a.alpha.,3b.beta.,4.beta.,7.alpha.,7aS*)]-	<a href="#">13744-15-5</a>	C15H24	70713	80.7	0.01	0.04
18.9544	1H-Cyclopenta[1,3]cyclopropa[1,2]benzene, octahydro-7-methyl-3-methylene-4-(1-methylethyl)-, [3aS-(3a.alpha.,3b.beta.,4.beta.,7.alpha.,7aS*)]-	<a href="#">13744-15-5</a>	C15H24	70713	80.7	0.01	0.04
19.1433	(S,1Z,6Z)-8-Isopropyl-1-methyl-5-methylenecyclodeca-1,6-diene	<a href="#">13744-15-5</a> <a href="#">317819-80-0</a>	C15H24	61183	81.6	0.01	0.03
19.2234	1H-Cyclopenta[1,3]cyclopropa[1,2]benzene, octahydro-7-methyl-3-methylene-4-(1-methylethyl)-, [3aS-(3a.alpha.,3b.beta.,4.beta.,7.alpha.,7aS*)]-	<a href="#">13744-15-5</a>	C15H24	597123	93.8	0.10	0.33
19.3264	Naphthalene, 1,2,3,4,4a,5,6,8a-octahydro-4a,8-dimethyl-2-(1-methylethenyl)-, [2R-(2.alpha.,4a.alpha.,8a.beta.)]-	<a href="#">13744-15-5</a>	C15H24	7750612	95.3	1.33	4.24
19.4408	.gamma.-Elemene	<a href="#">473-13-2</a>	C15H24	349397	91.7	0.06	0.19
19.6640	.alpha.-Muurolene	<a href="#">29873-99-2</a>	C15H24	1840702	92.7	0.32	1.01
19.7898	1,4-Methanocycloocta[d]pyridazine, 1,4,4a,5,6,9,10,10a-octahydro-11,11-dimethyl-, (1.alpha.,4.alpha.,4a.alpha.,10a.alpha.)-	<a href="#">31983-22-9</a>	C15H24	276933	89.9	0.05	0.15
19.8928	Naphthalene, 1,2,3,5,6,8a-hexahydro-4,7-dimethyl-1-(1-methylethyl)-, (1S-cis)-	<a href="#">1000221-85-9</a> <a href="#">483-76-1</a>	C13H20N2	103253	87.1	0.02	0.06
19.9558	.gamma.-Muurolene	<a href="#">30021-74-0</a>	C15H24	177275	85.9	0.03	0.10
20.1103	Naphthalene, 1,2,3,5,6,8a-hexahydro-4,7-dimethyl-1-(1-methylethyl)-, (1S-cis)-	<a href="#">483-76-1</a>	C15H24	719357	94.9	0.12	0.39
20.3392	Naphthalene, 1,2,3,4,4a,7-hexahydro-1,6-dimethyl-4-(1-methylethyl)-	<a href="#">16728-99-7</a> <a href="#">31983-22-9</a>	C15H24	1648803	96.4	0.28	0.90
20.5452	.alpha.-Muurolene	<a href="#">1139-30-6</a>	C15H24	78154	82.6	0.01	0.04
20.6653	Caryophyllene oxide	<a href="#">1000159-38-5</a>	C15H24	194557	87.4	0.03	0.11
21.7582	Cycloheptane, 4-methylene-1-methyl-2-(2-methyl-1-propen-1-yl)-1-vinyl-	<a href="#">1000159-38-5</a>	C15H24O	615005	92.0	0.11	0.34
22.0729			C15H24	1332843	91.6	0.23	0.73

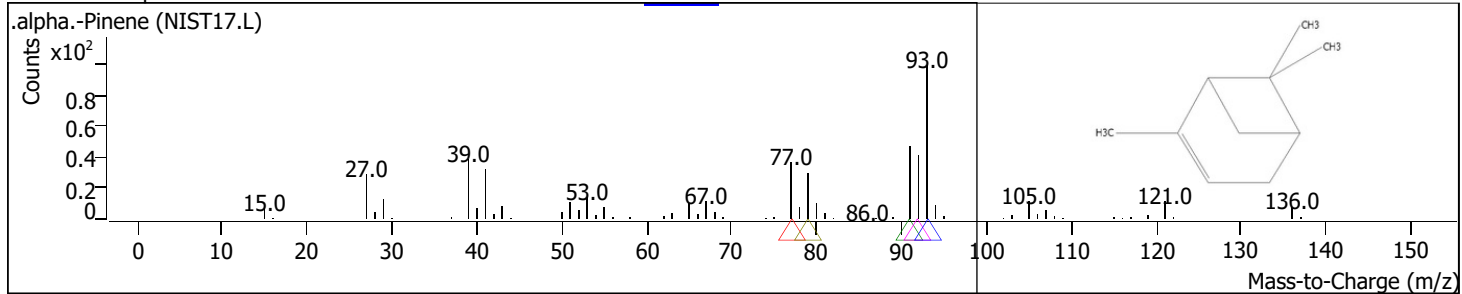
RT	Compound Name	CAS#	Formula	Area	Match Score	Sample	Sample
4.3689	Furan, 2,5-diethyltetrahydro-	<a href="#">41239-48-9</a>	C8H16O	119376	92.9	0.02	0.07



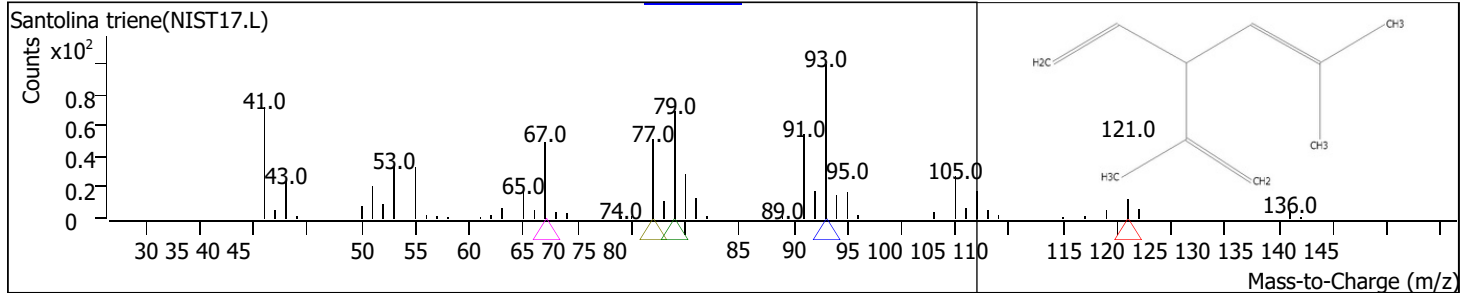
RT	Compound Name	CAS#	Formula	Area	Match Score	Sample	Sample
4.9869	Bicyclo[3.1.0]hex-2-ene, 2-methyl-5-(1-methylethyl)-	<a href="#">2867-05-2</a>	C10H16	179725	96.2	0.03	0.10



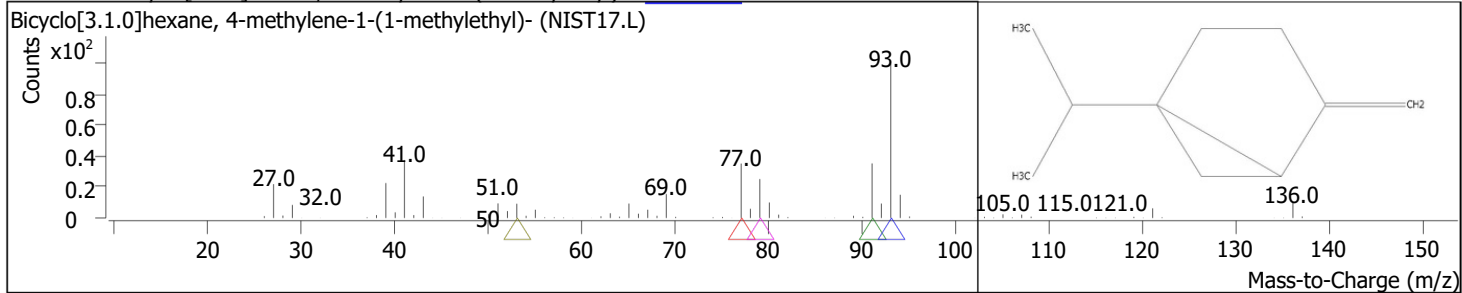
RT	Compound Name	CAS#	Formula	Area	Match Score	Sample	Sample
5.1185	.alpha.-Pinene	<a href="#">80-56-8</a>	C10H16	2842103	98.1	0.49	1.56



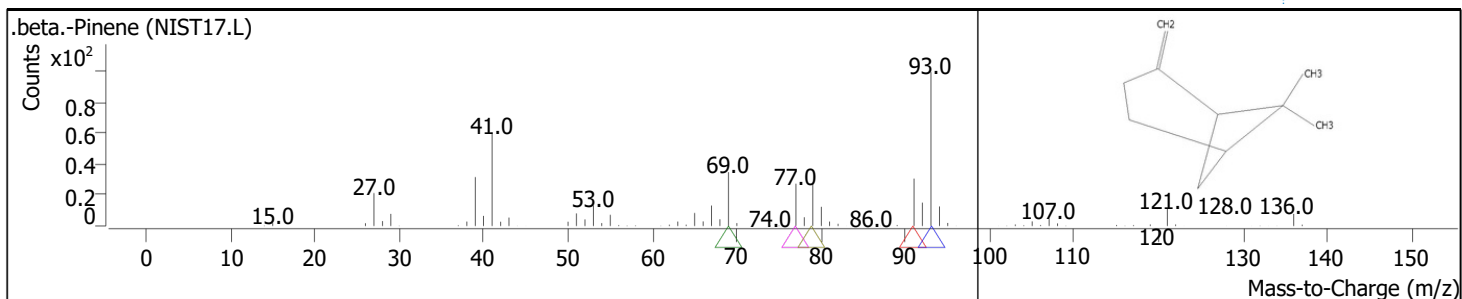
RT	Compound Name	CAS#	Formula	Area	Match Score	Sample	Sample
5.4504	Santolina triene	<a href="#">2153-66-4</a>	C10H16	76363	91.4	0.01	0.04



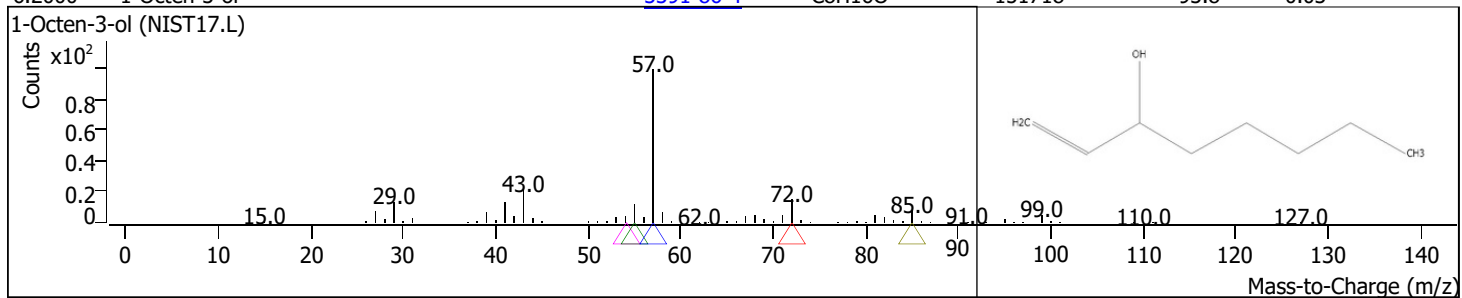
RT	Compound Name	CAS#	Formula	Area	Match Score	Sample	Sample
6.0341	Bicyclo[3.1.0]hexane, 4-methylene-1-(1-methylethyl)-	<a href="#">3387-41-5</a>	C10H16	2106592	98.2	0.36	1.15



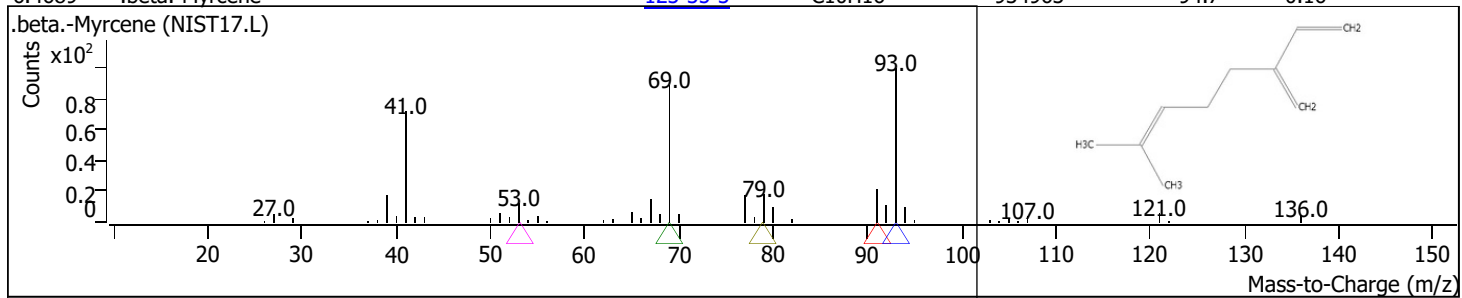
RT	Compound Name	CAS#	Formula	Area	Match Score	Sample	Sample
6.0970	.beta.-Pinene	<a href="#">127-91-3</a>	C10H16	5035217	98.7	0.86	2.76



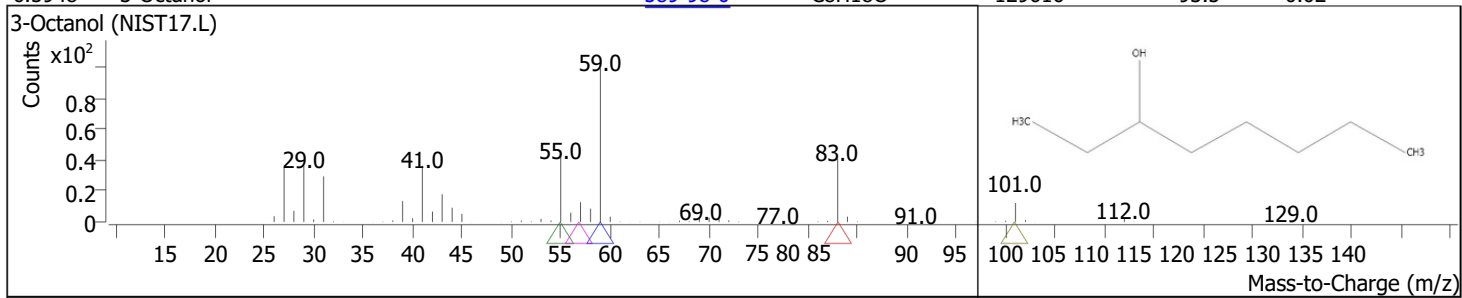
RT	Compound Name	CAS#	Formula	Area	Match Score	Sample	Sample
6.2000	1-Octen-3-ol	<a href="#">3391-86-4</a>	C <sub>8</sub> H <sub>16</sub> O	151718	93.8	0.03	0.08



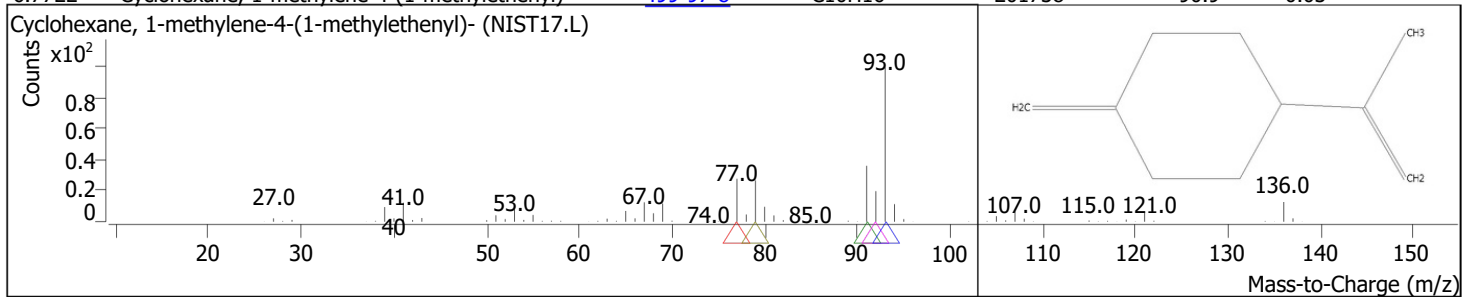
RT	Compound Name	CAS#	Formula	Area	Match Score	Sample	Sample
6.4689	.beta.-Myrcene	<a href="#">123-35-3</a>	C <sub>10</sub> H <sub>16</sub>	934963	94.7	0.16	0.51



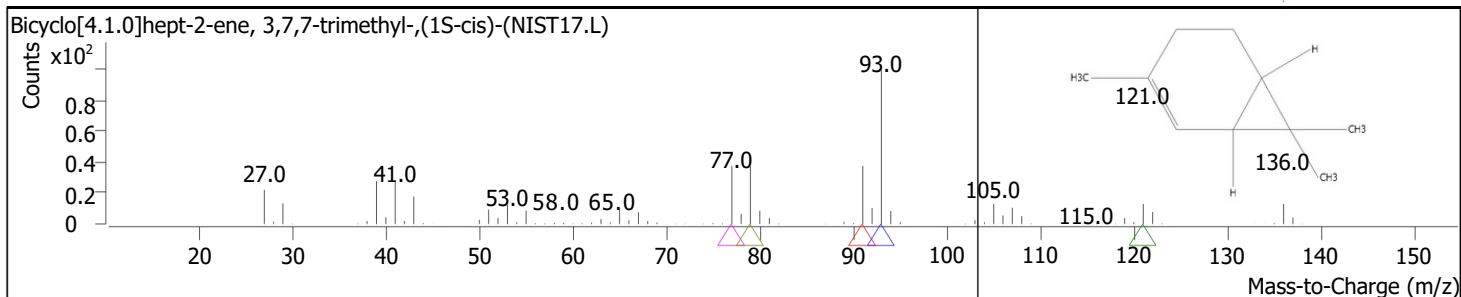
RT	Compound Name	CAS#	Formula	Area	Match Score	Sample	Sample
6.5948	3-Octanol	<a href="#">589-98-0</a>	C <sub>8</sub> H <sub>18</sub> O	129616	93.5	0.02	0.07



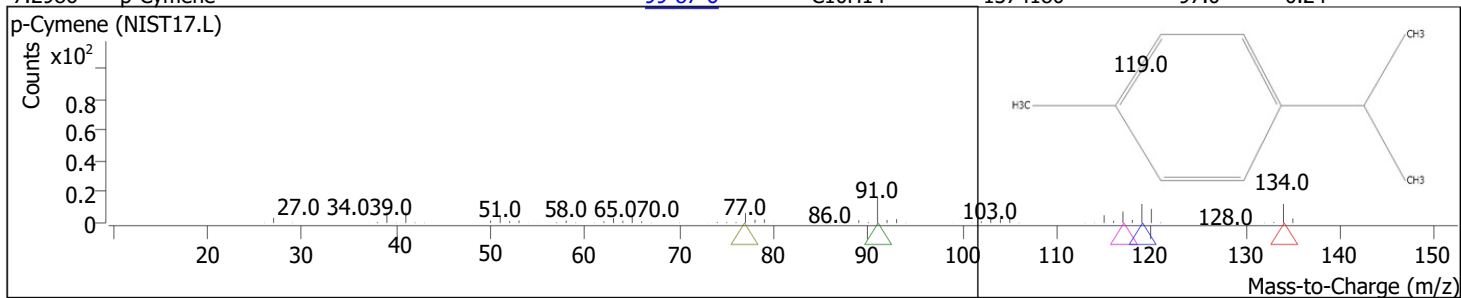
RT	Compound Name	CAS#	Formula	Area	Match Score	Sample	Sample
6.7722	Cyclohexane, 1-methylene-4-(1-methylethenyl)-	<a href="#">499-97-8</a>	C <sub>10</sub> H <sub>16</sub>	201738	90.9	0.03	0.11



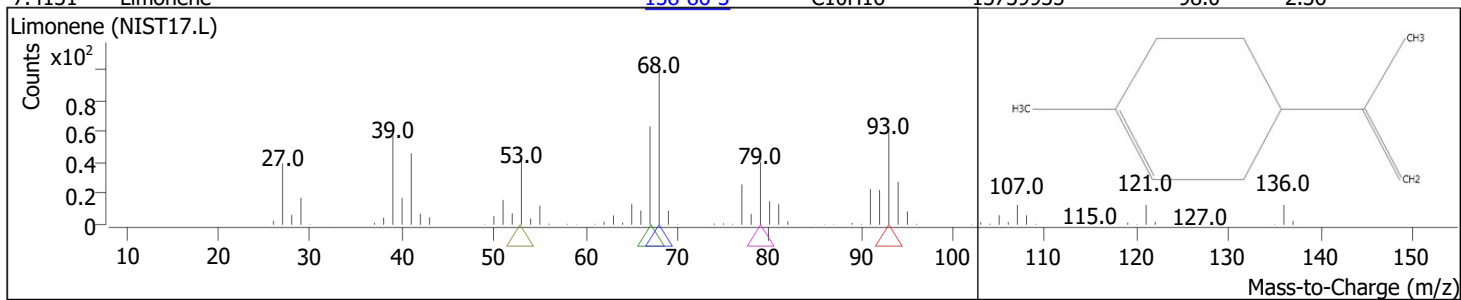
RT	Compound Name	CAS#	Formula	Area	Match Score	Sample	Sample
7.0869	Bicyclo[4.1.0]hept-2-ene, 3,7,7-trimethyl-, (1S-cis)-	<a href="#">4497-92-1</a>	C <sub>10</sub> H <sub>16</sub>	1129335	97.4	0.19	0.62



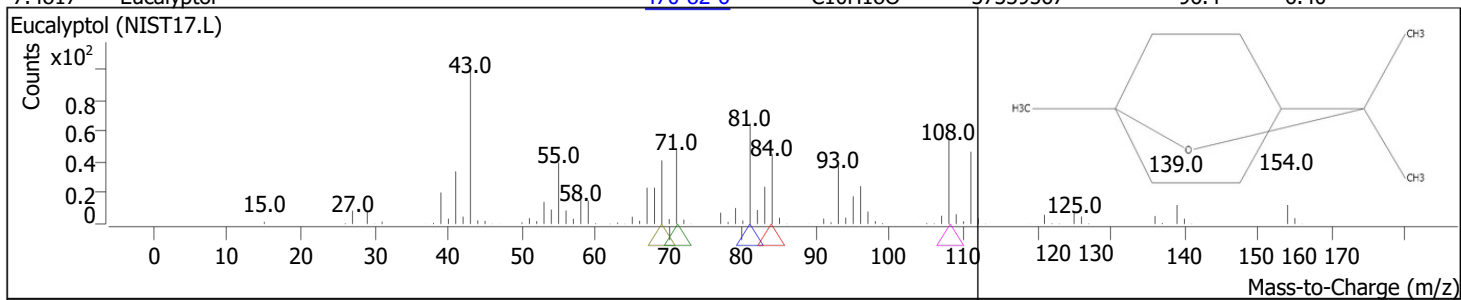
RT	Compound Name	CAS#	Formula	Area	Match Score	Sample	Sample
7.2986	p-Cymene	<a href="#">99-87-6</a>	C10H14	1374180	97.0	0.24	0.75



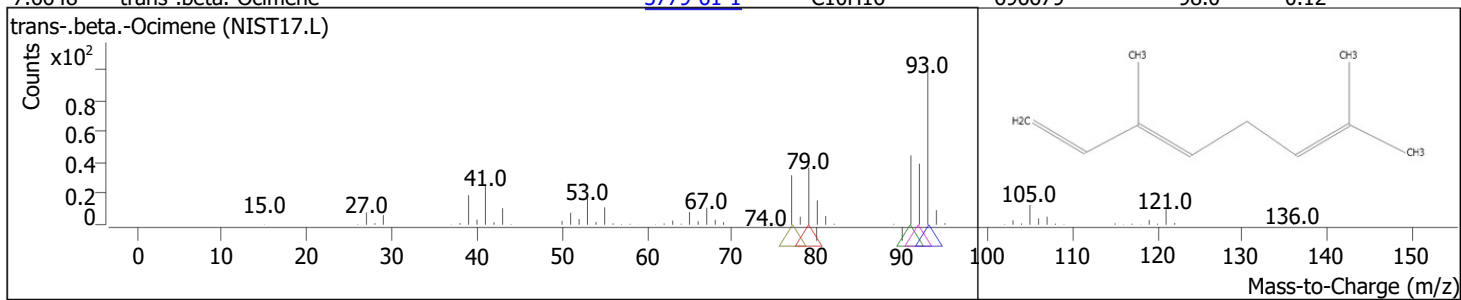
RT	Compound Name	CAS#	Formula	Area	Match Score	Sample	Sample
7.4131	Limonene	<a href="#">138-86-3</a>	C10H16	13739935	98.0	2.36	7.52



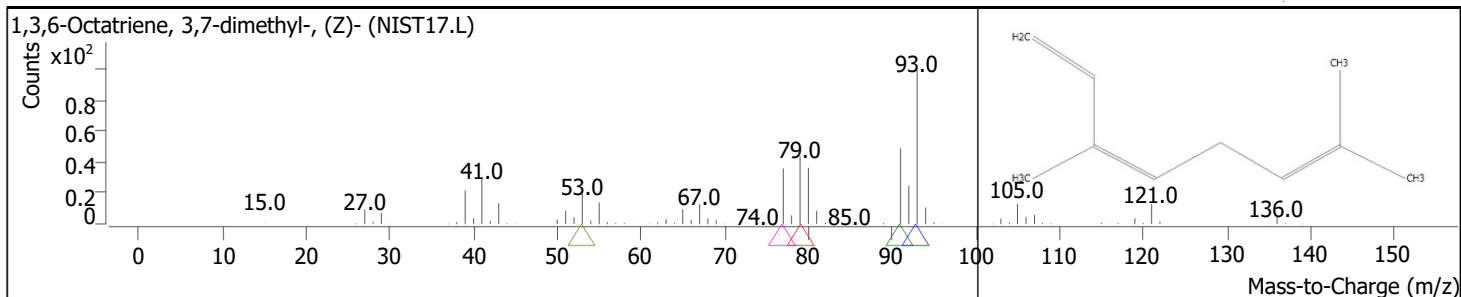
RT	Compound Name	CAS#	Formula	Area	Match Score	Sample	Sample
7.4817	Eucalyptol	<a href="#">470-82-6</a>	C10H18O	37339567	96.4	6.40	20.44



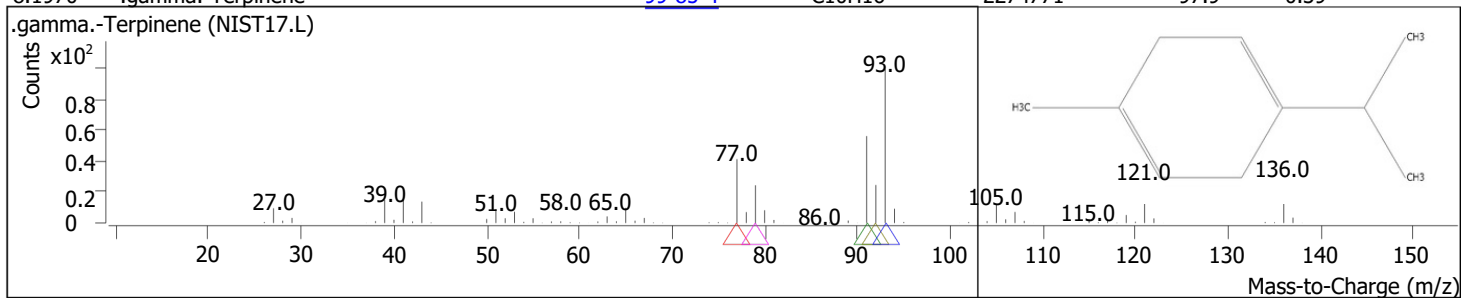
RT	Compound Name	CAS#	Formula	Area	Match Score	Sample	Sample
7.6648	trans-.beta.-Ocimene	<a href="#">3779-61-1</a>	C10H16	696679	98.0	0.12	0.38



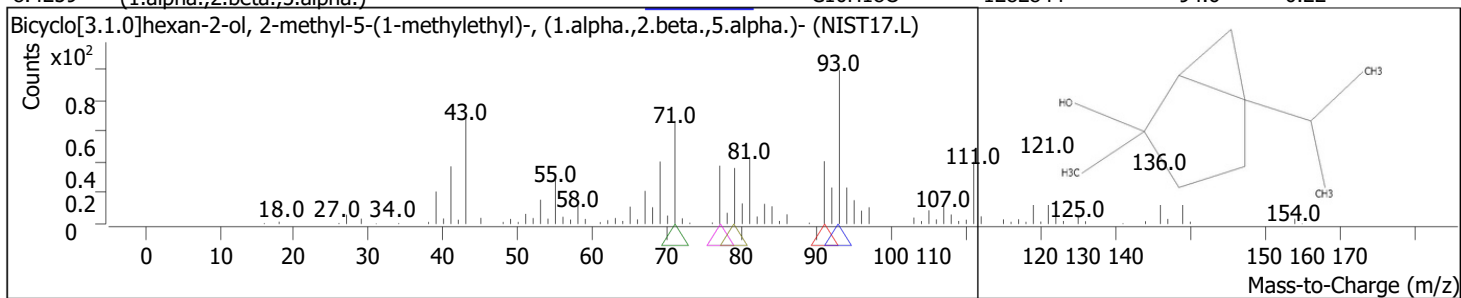
RT	Compound Name	CAS#	Formula	Area	Match Score	Sample	Sample
7.9338	1,3,6-Octatriene, 3,7-dimethyl-, (Z)-	<a href="#">3338-55-4</a>	C10H16	161023	95.1	0.03	0.09



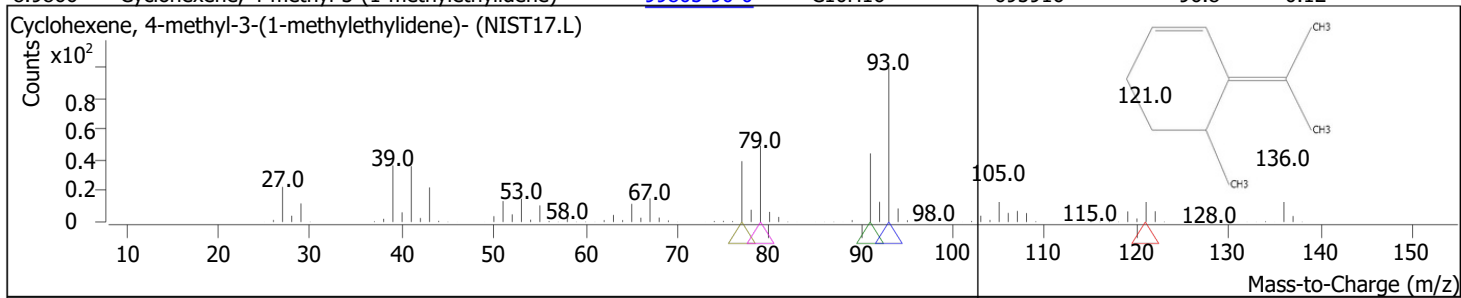
RT	Compound Name	CAS#	Formula	Area	Match Score	Sample	Sample
8.1970	.gamma.-Terpinene	<a href="#">99-85-4</a>	C <sub>10</sub> H <sub>16</sub>	2274771	97.9	0.39	1.25



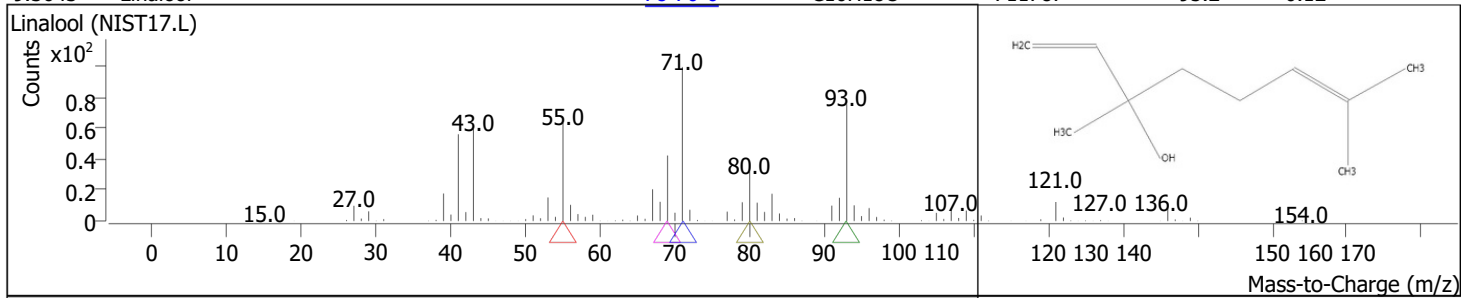
RT	Compound Name	CAS#	Formula	Area	Match Score	Sample	Sample
8.4259	Bicyclo[3.1.0]hexan-2-ol, 2-methyl-5-(1-methylethyl)-, (1.alpha.,2.beta.,5.alpha.)-	<a href="#">15537-55-0</a>	C <sub>10</sub> H <sub>18</sub> O	1282844	94.6	0.22	0.70



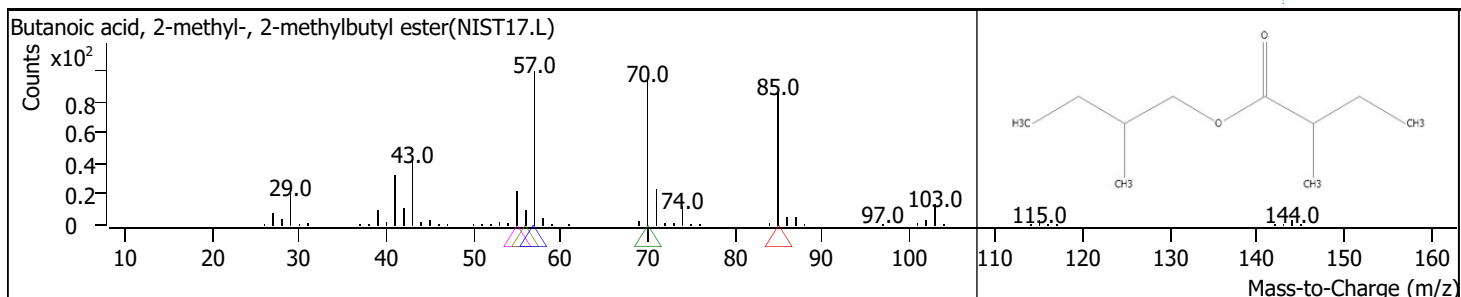
RT	Compound Name	CAS#	Formula	Area	Match Score	Sample	Sample
8.9866	Cyclohexene, 4-methyl-3-(1-methylethylidene)-	<a href="#">99805-90-0</a>	C <sub>10</sub> H <sub>16</sub>	695916	96.8	0.12	0.38



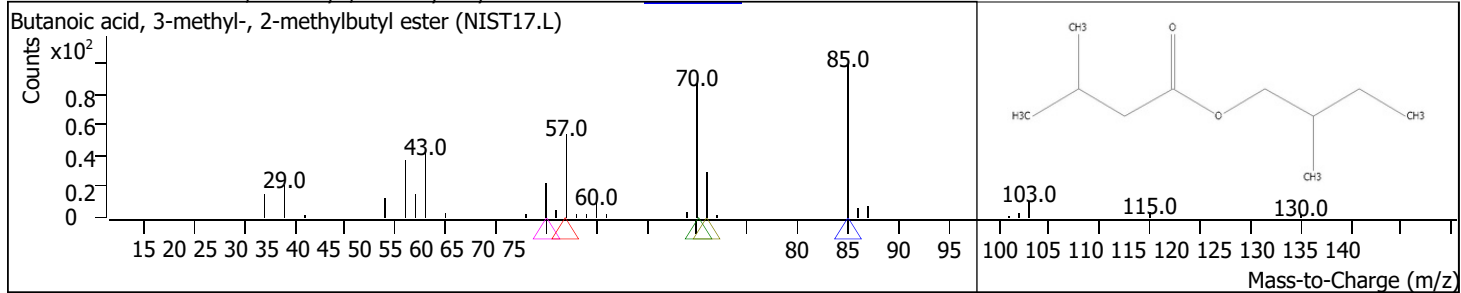
RT	Compound Name	CAS#	Formula	Area	Match Score	Sample	Sample
9.3643	Linalool	<a href="#">78-70-6</a>	C <sub>10</sub> H <sub>18</sub> O	711787	95.2	0.12	0.39



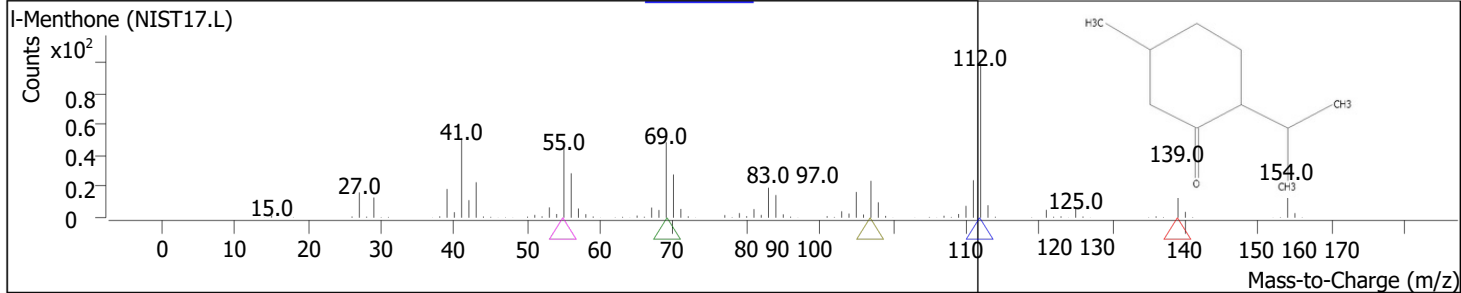
RT	Compound Name	CAS#	Formula	Area	Match Score	Sample	Sample
9.4387	Butanoic acid, 2-methyl-, 2-methylbutyl ester	<a href="#">2445-78-5</a>	C <sub>10</sub> H <sub>20</sub> O <sub>2</sub>	409982	88.9	0.07	0.22



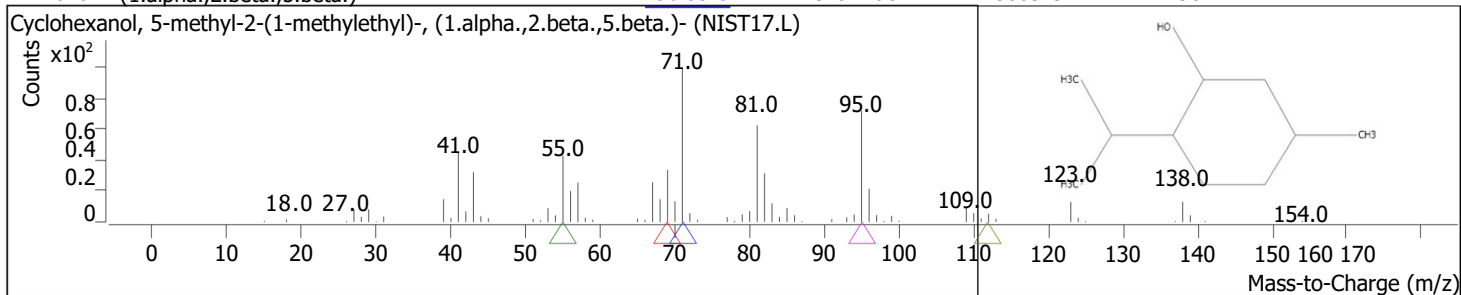
RT	Compound Name	CAS#	Formula	Area	Match Score	Sample	Sample
9.5588	Butanoic acid, 3-methyl-, 2-methylbutyl ester	<a href="#">2445-77-4</a>	C10H20O2	155671	88.1	0.03	0.09



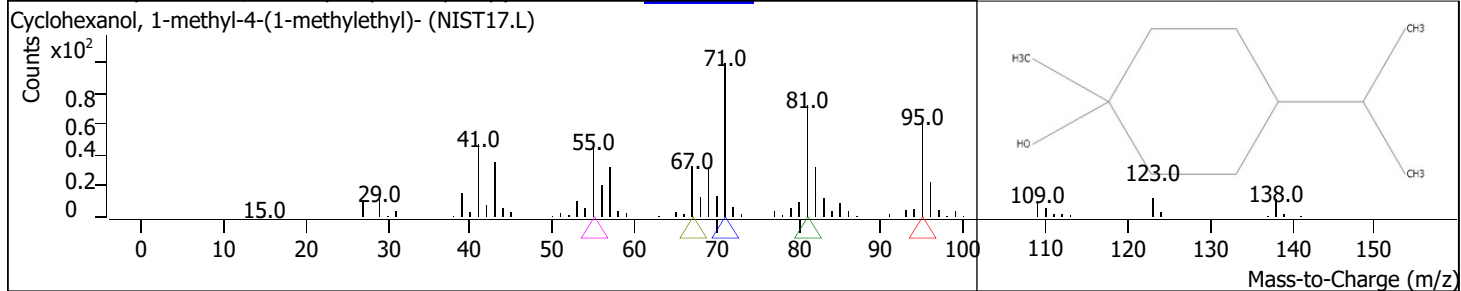
RT	Compound Name	CAS#	Formula	Area	Match Score	Sample	Sample
10.9264	I-Menthone	<a href="#">14073-97-3</a>	C10H18O	182682902	98.9	31.33	100.00



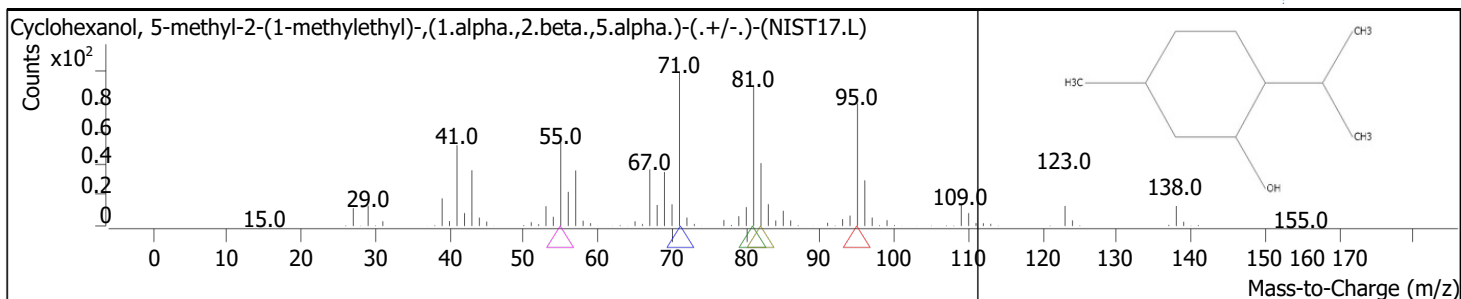
RT	Compound Name	CAS#	Formula	Area	Match Score	Sample	Sample
11.1610	Cyclohexanol, 5-methyl-2-(1-methylethyl)-, (1.alpha.,2.beta.,5.beta.)-	<a href="#">490-99-3</a>	C10H20O	71360349	90.2	12.24	39.06



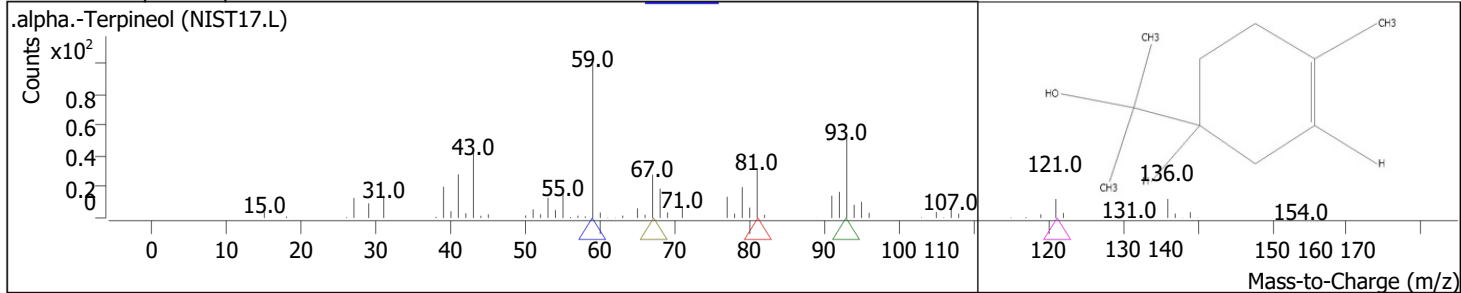
RT	Compound Name	CAS#	Formula	Area	Match Score	Sample	Sample
11.4071	Cyclohexanol, 1-methyl-4-(1-methylethyl)-	<a href="#">21129-27-1</a>	C10H20O	20692651	98.9	3.55	11.33



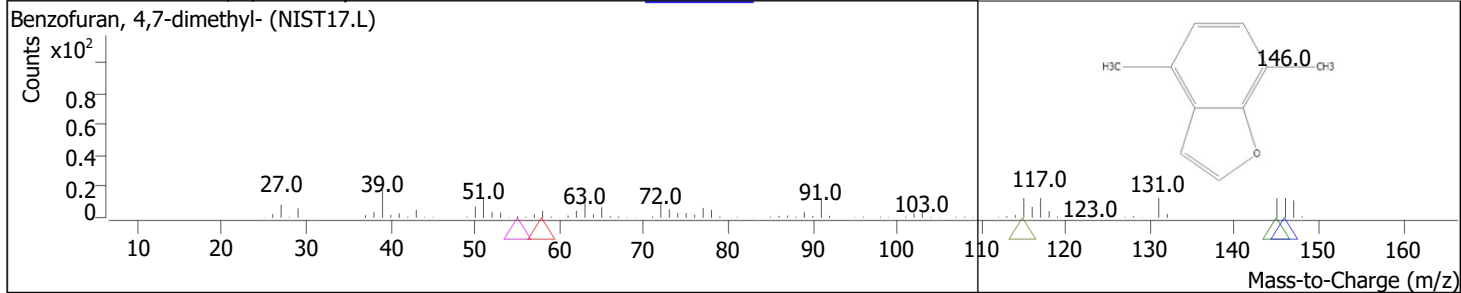
RT	Compound Name	CAS#	Formula	Area	Match Score	Sample	Sample
11.5387	Cyclohexanol, 5-methyl-2-(1-methylethyl)-, (1.alpha.,2.beta.,5.alpha.)-(./-.)-	<a href="#">15356-70-4</a>	C10H20O	115152221	99.0	19.75	63.03



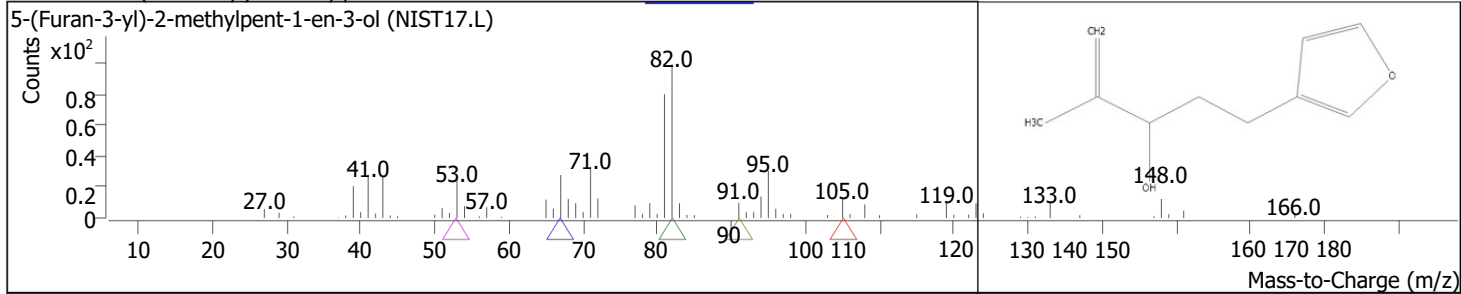
RT	Compound Name	CAS#	Formula	Area	Match Score	Sample	Sample
11.8877	.alpha.-Terpineol	<a href="#">98-55-5</a>	C10H18O	4910052	95.8	0.84	2.69



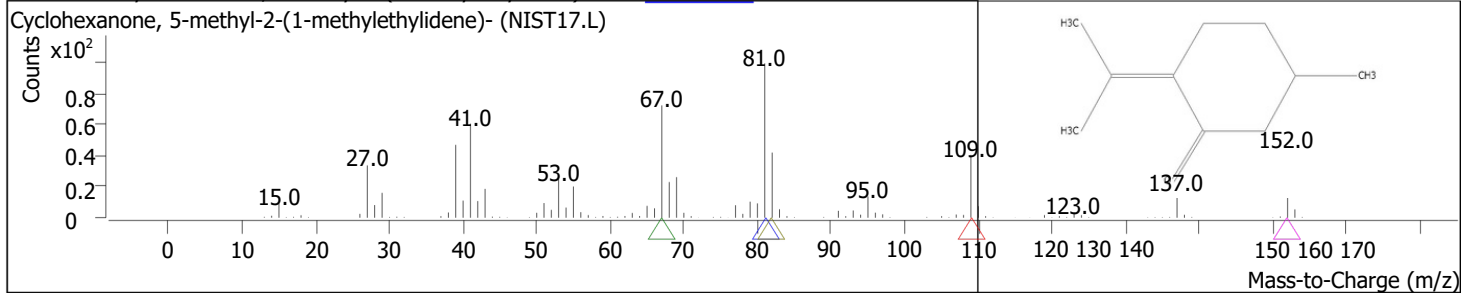
RT	Compound Name	CAS#	Formula	Area	Match Score	Sample	Sample
12.4141	Benzofuran, 4,7-dimethyl-	<a href="#">28715-26-6</a>	C10H10O	66628	65.8	0.01	0.04



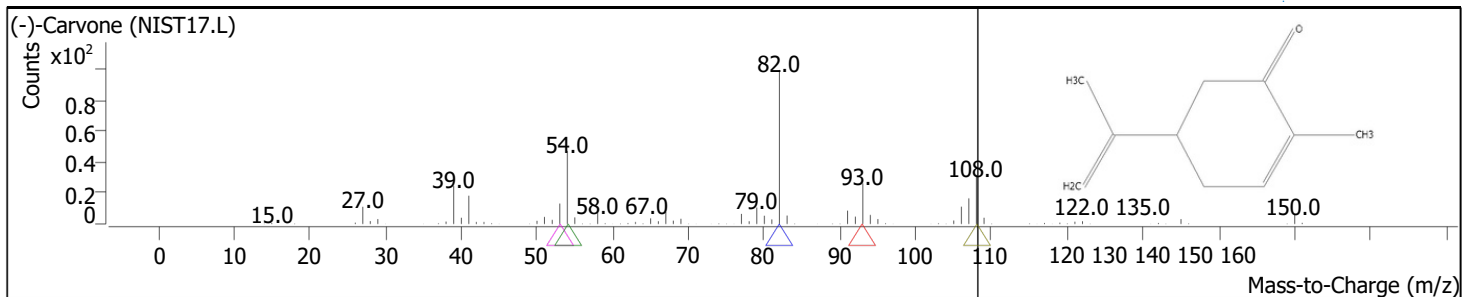
RT	Compound Name	CAS#	Formula	Area	Match Score	Sample	Sample
12.4771	5-(Furan-3-yl)-2-methylpent-1-en-3-ol	<a href="#">72075-28-6</a>	C10H14O2	110341	61.6	0.02	0.06



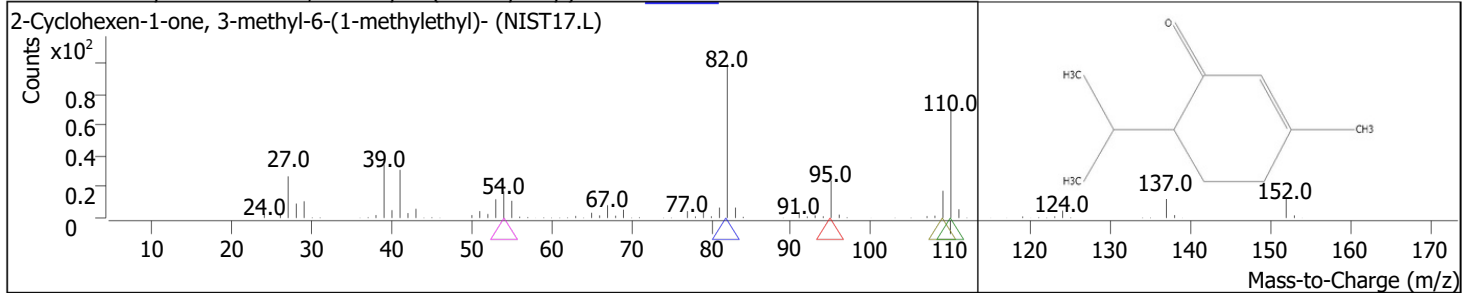
RT	Compound Name	CAS#	Formula	Area	Match Score	Sample	Sample
13.1466	Cyclohexanone, 5-methyl-2-(1-methylethylidene)-	<a href="#">15932-80-6</a>	C10H16O	8348483	97.7	1.43	4.57



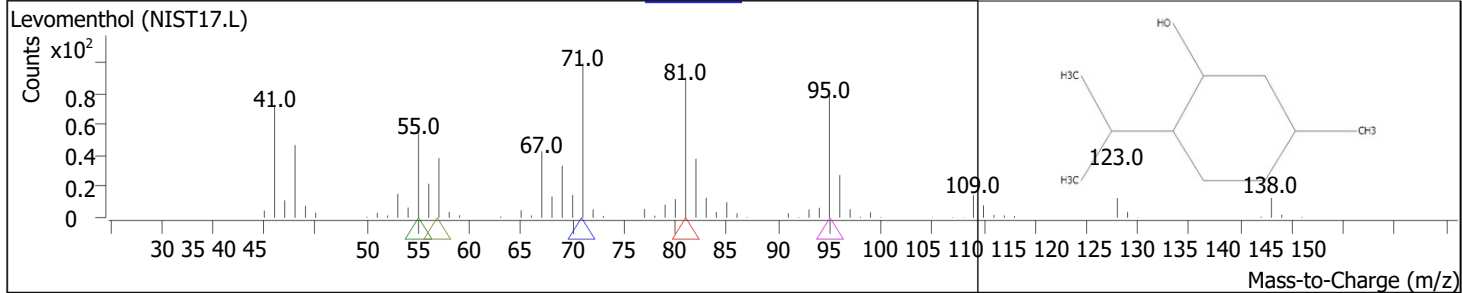
RT	Compound Name	CAS#	Formula	Area	Match Score	Sample	Sample
13.2553	(-)-Carvone	<a href="#">6485-40-1</a>	C10H14O	1525381	96.1	0.26	0.83



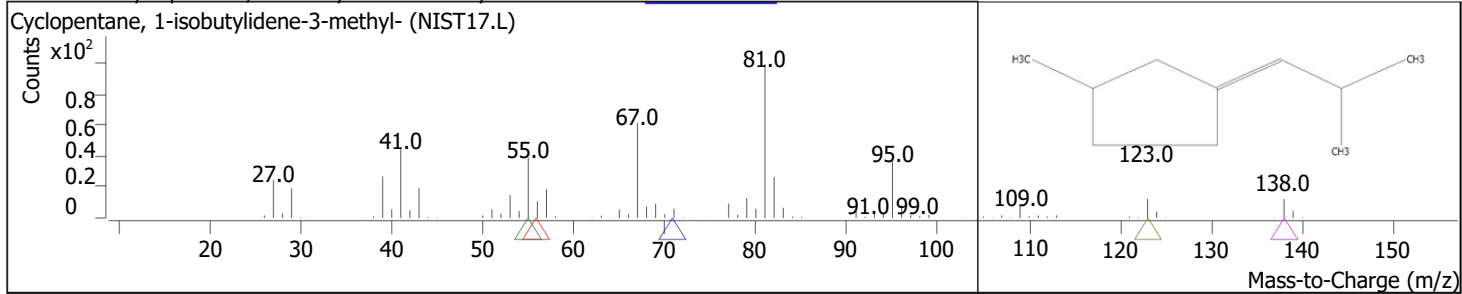
RT	Compound Name	CAS#	Formula	Area	Match Score	Sample	Sample
13.5299	2-Cyclohexen-1-one, 3-methyl-6-(1-methylethyl)-	<a href="#">89-81-6</a>	C10H16O	2534558	96.4	0.43	1.39



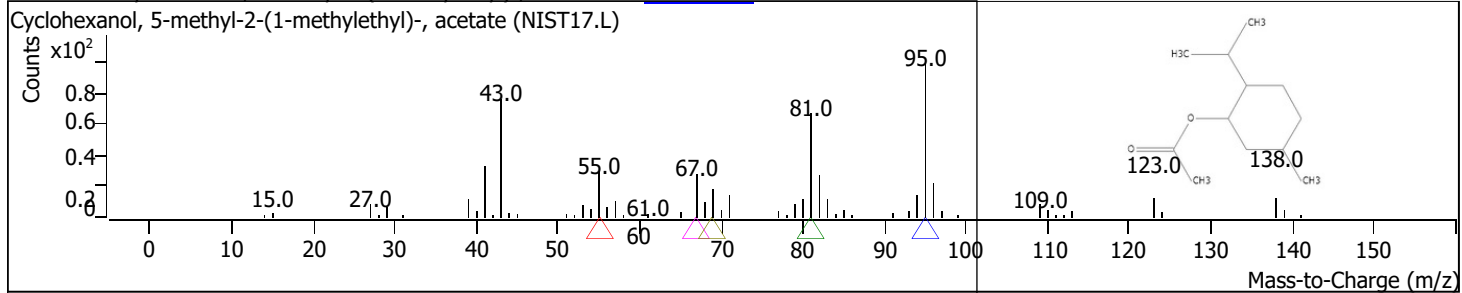
RT	Compound Name	CAS#	Formula	Area	Match Score	Sample	Sample
13.7245	Levomenthol	<a href="#">2216-51-5</a>	C10H20O	1178122	88.0	0.20	0.64



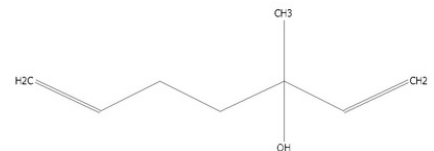
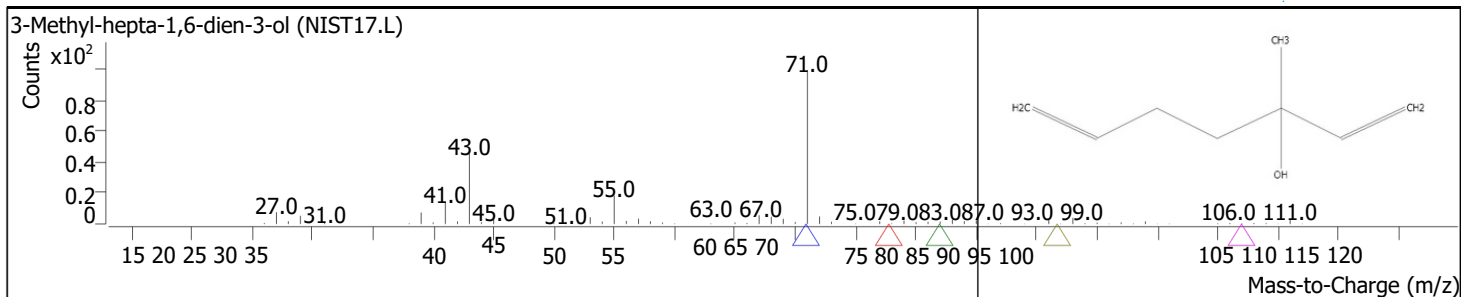
RT	Compound Name	CAS#	Formula	Area	Match Score	Sample	Sample
13.9820	Cyclopentane, 1-isobutylidene-3-methyl-	<a href="#">1000150-62-1</a>	C10H18	147751	84.4	0.03	0.08



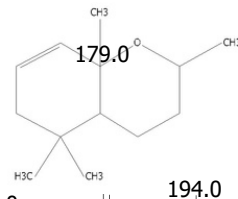
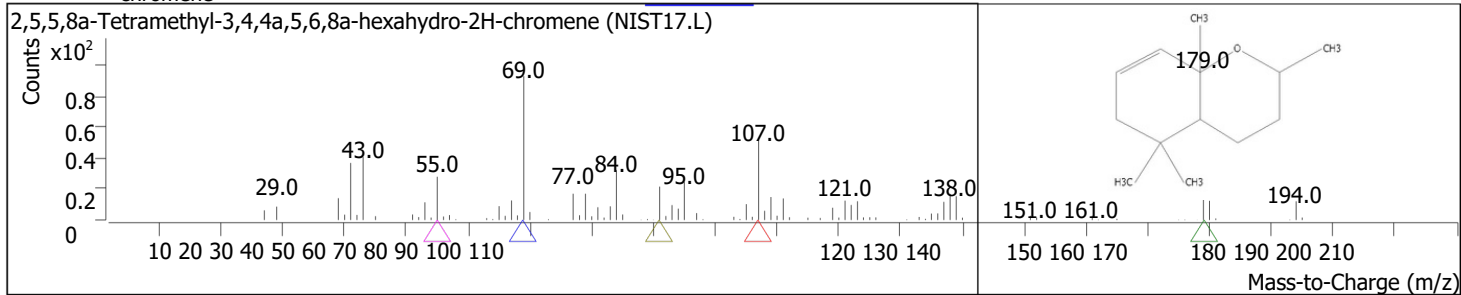
RT	Compound Name	CAS#	Formula	Area	Match Score	Sample	Sample
14.1021	Cyclohexanol, 5-methyl-2-(1-methylethyl)-, acetate	<a href="#">16409-45-3</a>	C12H22O2	2639983	96.6	0.45	1.45



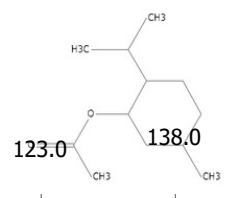
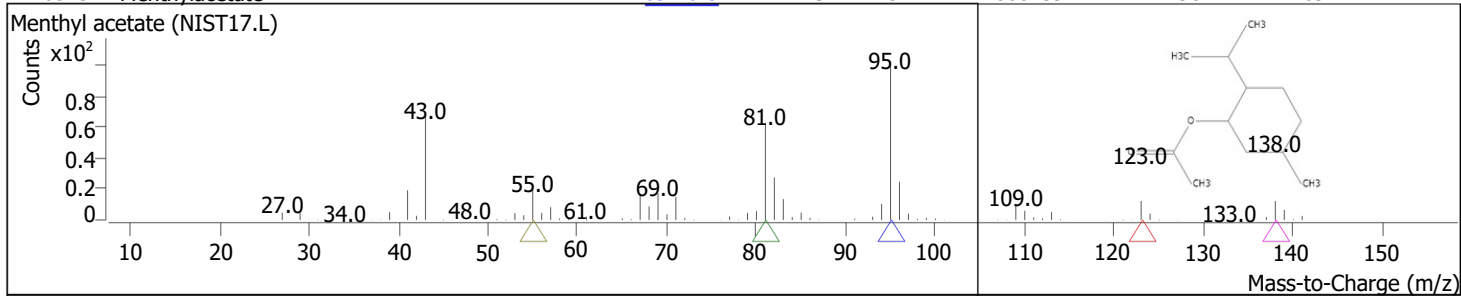
RT	Compound Name	CAS#	Formula	Area	Match Score	Sample	Sample
14.2738	3-Methyl-hepta-1,6-dien-3-ol	<a href="#">34780-69-3</a>	C8H14O	101652	71.1	0.02	0.06



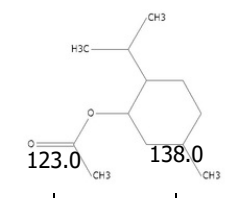
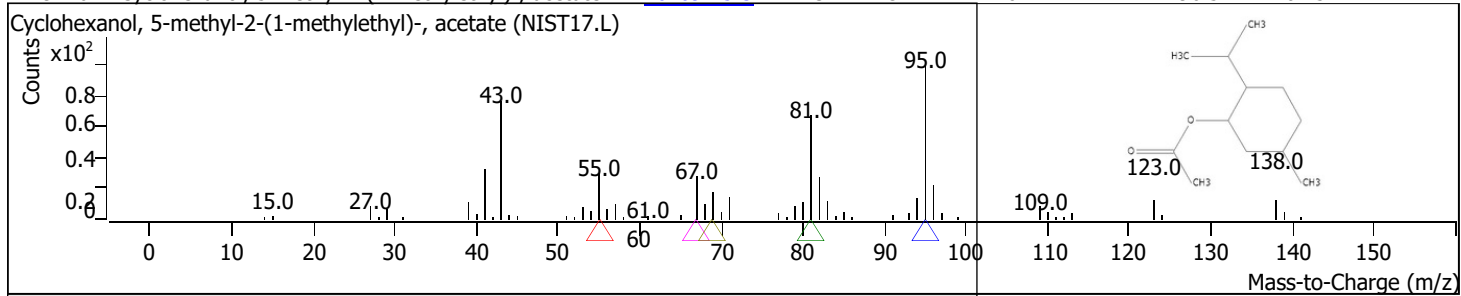
RT	Compound Name	CAS#	Formula	Area	Match Score	Sample	Sample
14.4168	2,5,5,8a-Tetramethyl-3,4,4a,5,6,8a-hexahydro-2H-chromene	<a href="#">72746-44-2</a>	C <sub>13</sub> H <sub>22</sub> O	172986	89.9	0.03	0.09



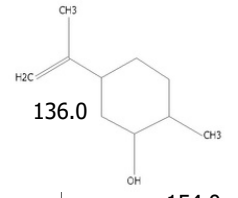
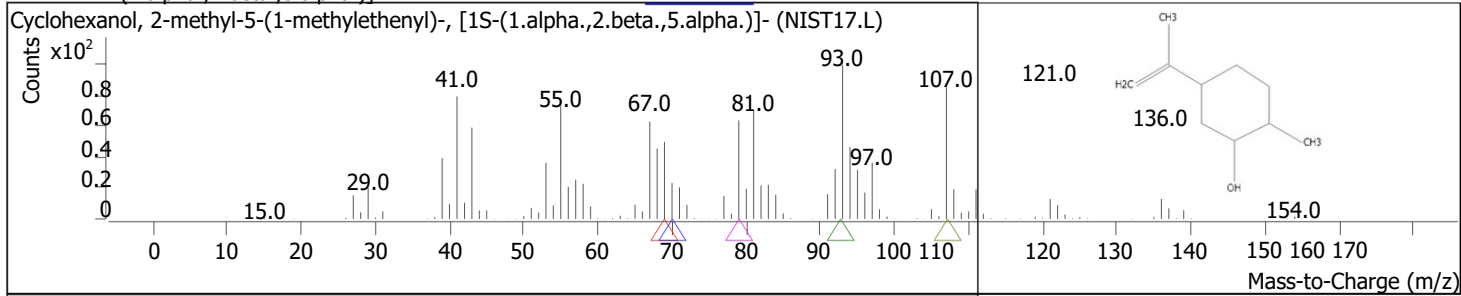
RT	Compound Name	CAS#	Formula	Area	Match Score	Sample	Sample
14.6515	Menthylacetate	<a href="#">89-48-5</a>	C <sub>12</sub> H <sub>22</sub> O <sub>2</sub>	44868439	98.2	7.69	24.56



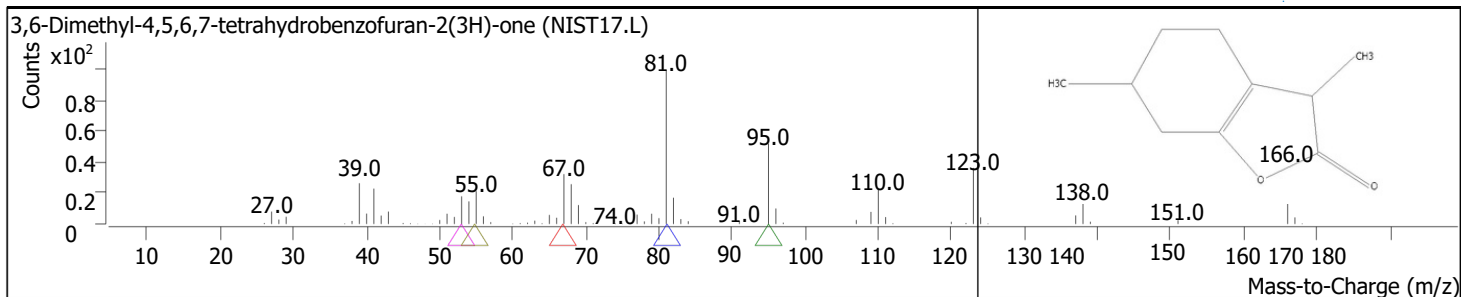
RT	Compound Name	CAS#	Formula	Area	Match Score	Sample	Sample
14.9776	Cyclohexanol, 5-methyl-2-(1-methylethyl)-, acetate	<a href="#">16409-45-3</a>	C <sub>12</sub> H <sub>22</sub> O <sub>2</sub>	1467712	96.5	0.25	0.80



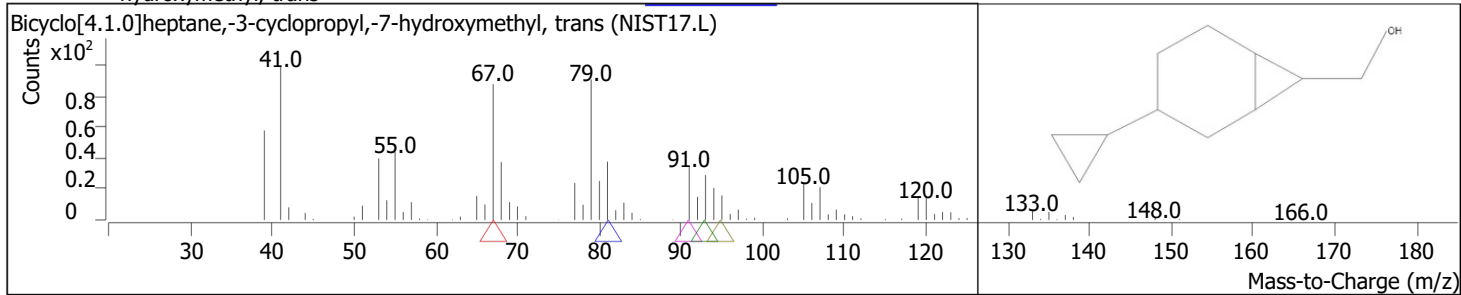
RT	Compound Name	CAS#	Formula	Area	Match Score	Sample	Sample
15.0749	Cyclohexanol, 2-methyl-5-(1-methylethenyl)-, [1S-(1.alpha.,2.beta.,5.alpha.)]-	<a href="#">22567-21-1</a>	C <sub>10</sub> H <sub>18</sub> O	268990	74.1	0.05	0.15



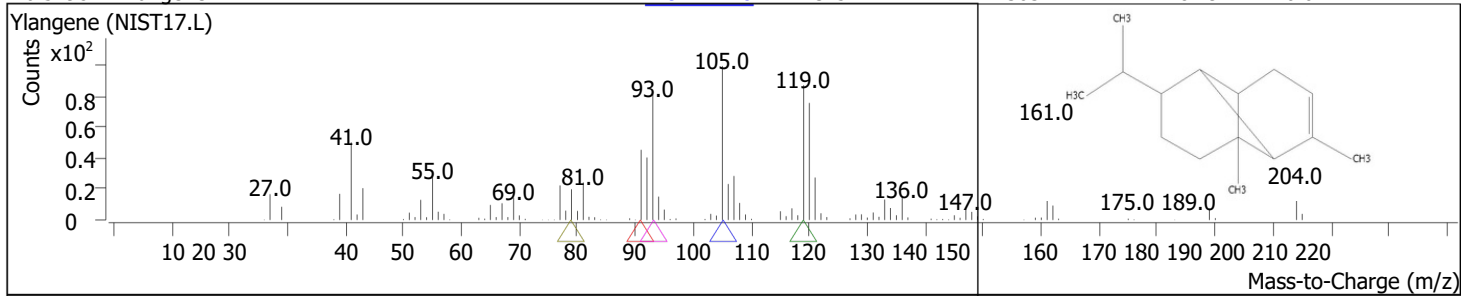
RT	Compound Name	CAS#	Formula	Area	Match Score	Sample	Sample
15.9504	3,6-Dimethyl-4,5,6,7-tetrahydrobenzofuran-2(3H)-one	<a href="#">16642-41-4</a>	C <sub>10</sub> H <sub>14</sub> O <sub>2</sub>	209810	88.9	0.04	0.11



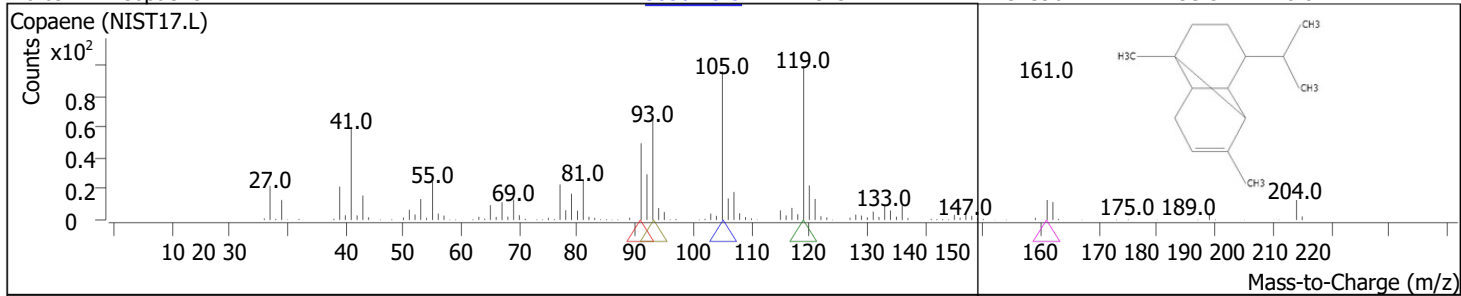
RT	Compound Name	CAS#	Formula	Area	Match Score	Sample	Sample
16.0247	Bicyclo[4.1.0]heptane,-3-cyclopropyl,-7-hydroxymethyl, trans	<a href="#">1000223-00-6</a>	C11H18O	621861	83.0	0.11	0.34



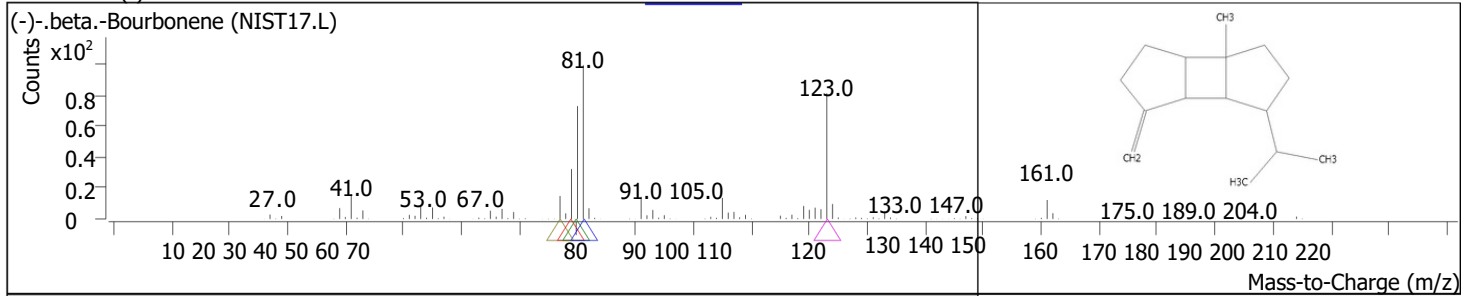
RT	Compound Name	CAS#	Formula	Area	Match Score	Sample	Sample
16.5798	Ylangene	<a href="#">14912-44-8</a>	C15H24	130312	87.9	0.02	0.07



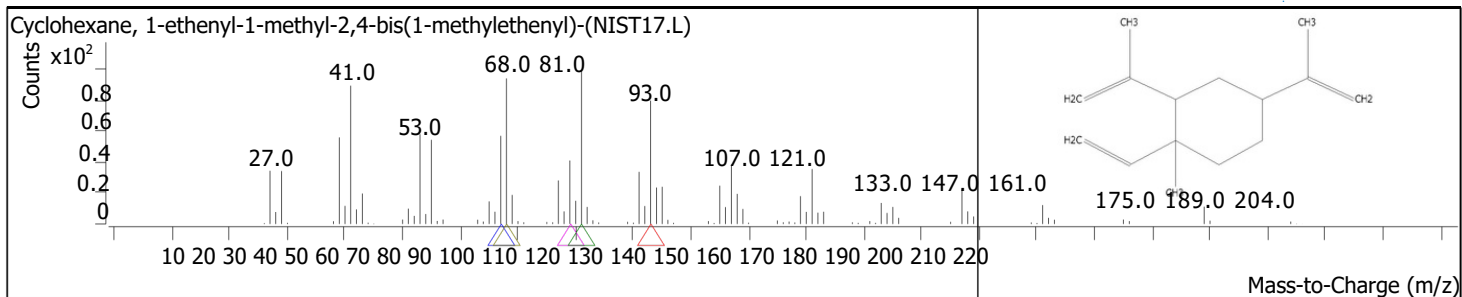
RT	Compound Name	CAS#	Formula	Area	Match Score	Sample	Sample
16.6942	Copaene	<a href="#">3856-25-5</a>	C15H24	232396	93.5	0.04	0.13



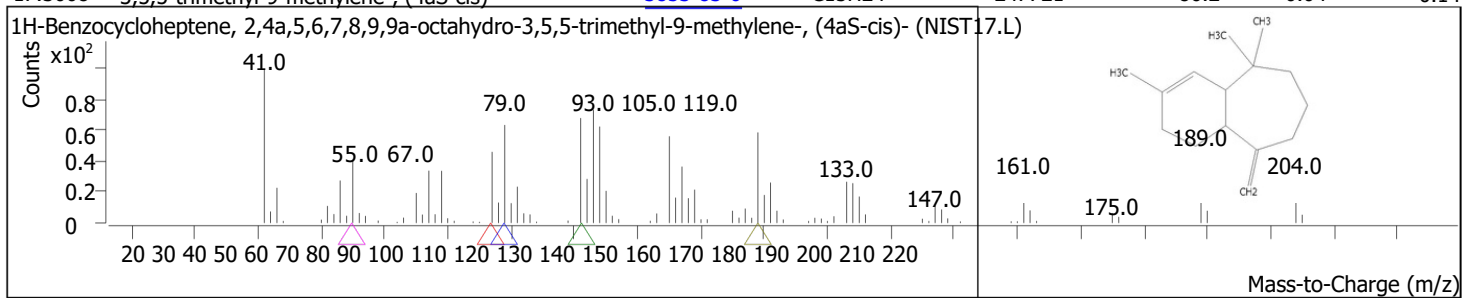
RT	Compound Name	CAS#	Formula	Area	Match Score	Sample	Sample
16.9288	(-)-.beta.-Bourbonene	<a href="#">5208-59-3</a>	C15H24	1624057	95.5	0.28	0.89



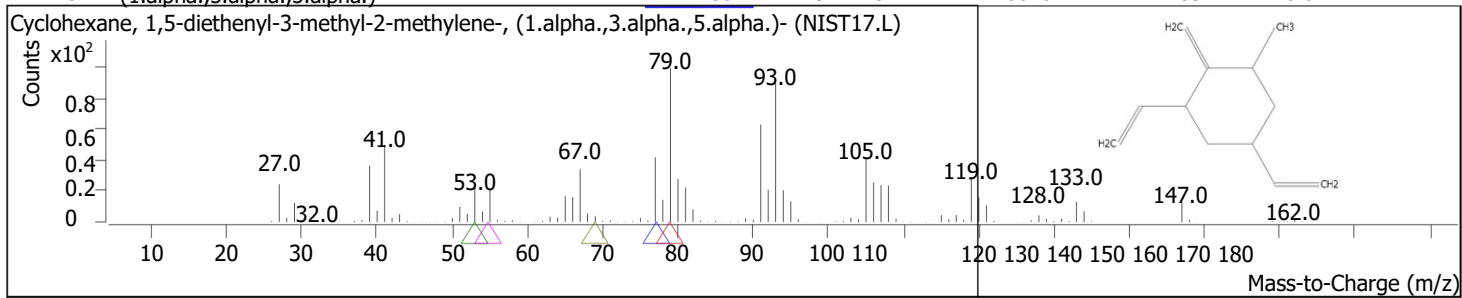
RT	Compound Name	CAS#	Formula	Area	Match Score	Sample	Sample
17.1234	Cyclohexane, 1-ethenyl-1-methyl-2,4-bis(1-methylethenyl)-	<a href="#">110823-68-2</a>	C15H24	547851	96.3	0.09	0.30



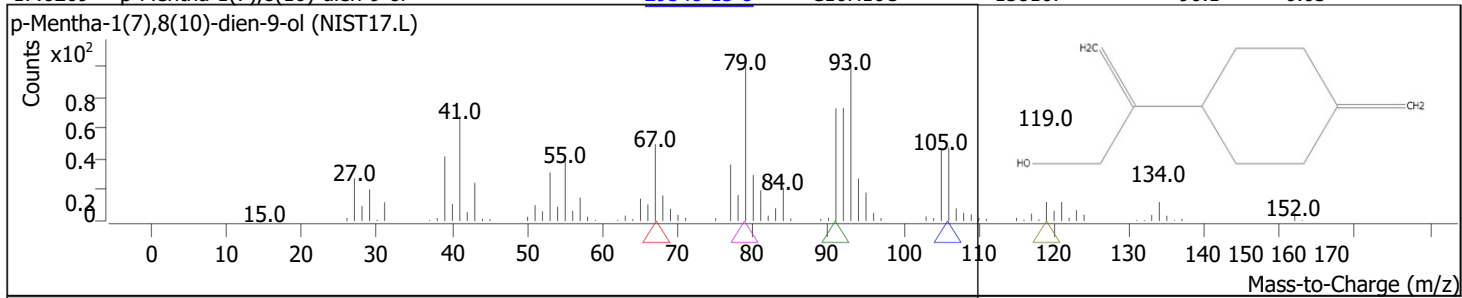
RT	Compound Name	CAS#	Formula	Area	Match Score	Sample	Sample
17.3008	1H-Benzocycloheptene, 2,4a,5,6,7,8,9,9a-octahydro-3,5,5-trimethyl-9-methylene-, (4aS-cis)-	<a href="#">3853-83-6</a>	C15H24	247721	86.2	0.04	0.14



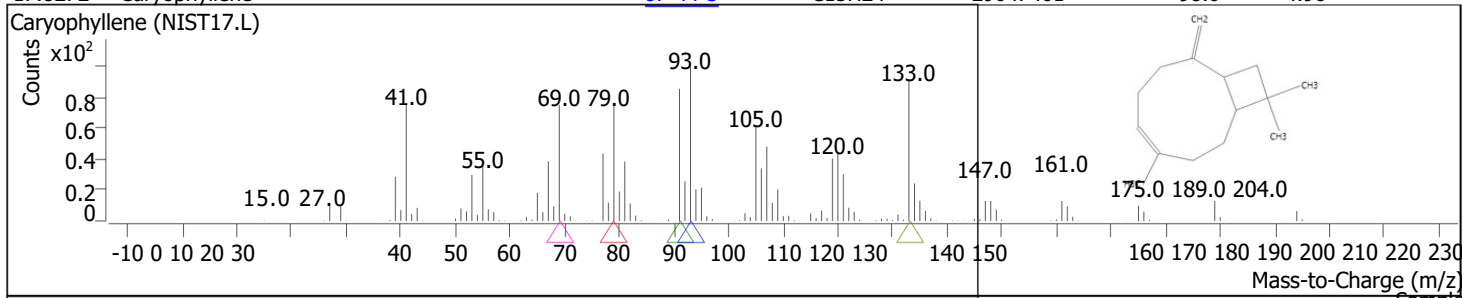
RT	Compound Name	CAS#	Formula	Area	Match Score	Sample	Sample
17.4781	Cyclohexane, 1,5-diethenyl-3-methyl-2-methylene-, (1.alpha.,3.alpha.,5.alpha.)-	<a href="#">74742-35-1</a>	C12H18	86104	83.4	0.01	0.05



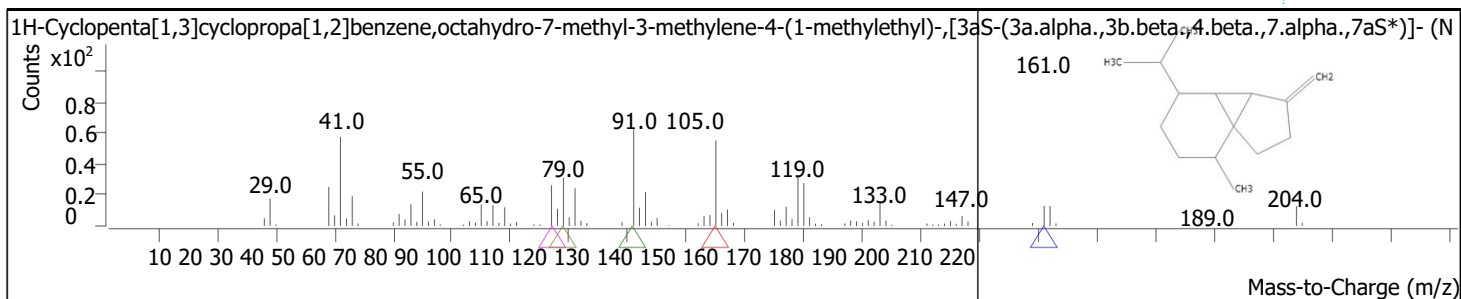
RT	Compound Name	CAS#	Formula	Area	Match Score	Sample	Sample
17.6269	p-Mentha-1(7),8(10)-dien-9-ol	<a href="#">29548-13-8</a>	C10H16O	158167	90.1	0.03	0.09



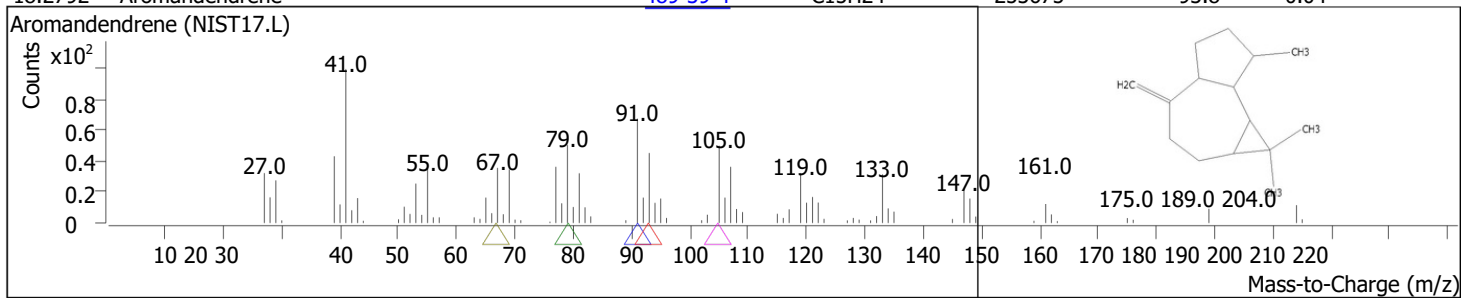
RT	Compound Name	CAS#	Formula	Area	Match Score	Sample	Sample
17.8272	Caryophyllene	<a href="#">87-44-5</a>	C15H24	29047461	98.0	4.98	15.90



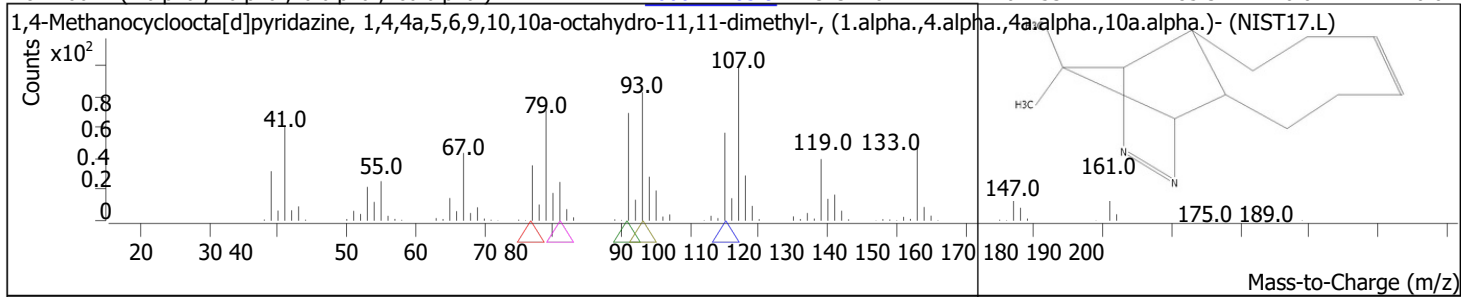
RT	Compound Name	CAS#	Formula	Area	Match Score	Sample	Sample
18.0332	1H-Cyclopenta[1,3]cyclopropa[1,2]benzene, octahydro-7-methyl-3-methylene-4-(1-methylethyl)-, [3aS-(3a.alpha.,3b.beta.,4.beta.,7.alpha.,7aS*)]-	<a href="#">13744-15-5</a>	C15H24	187284	92.3	0.03	0.10



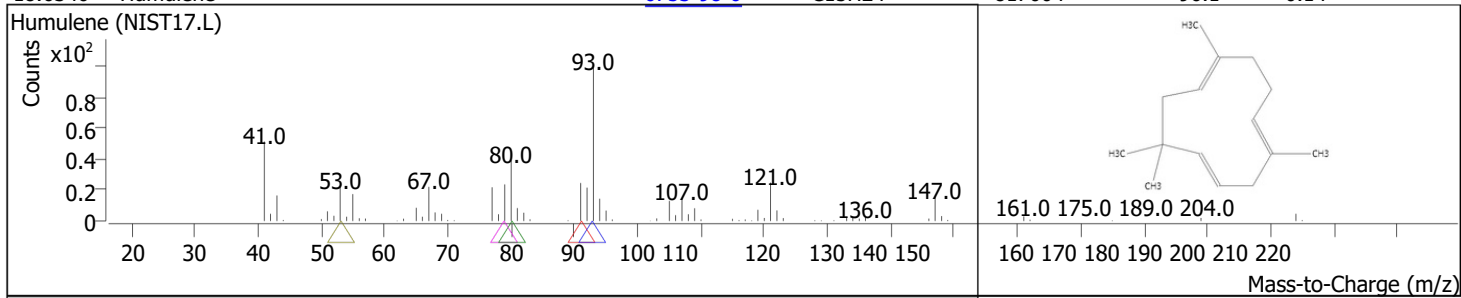
RT	Compound Name	CAS#	Formula	Area	Match Score	Sample	Sample
18.2792	Aromandendrene	<a href="#">489-39-4</a>	C15H24	253675	93.8	0.04	0.14



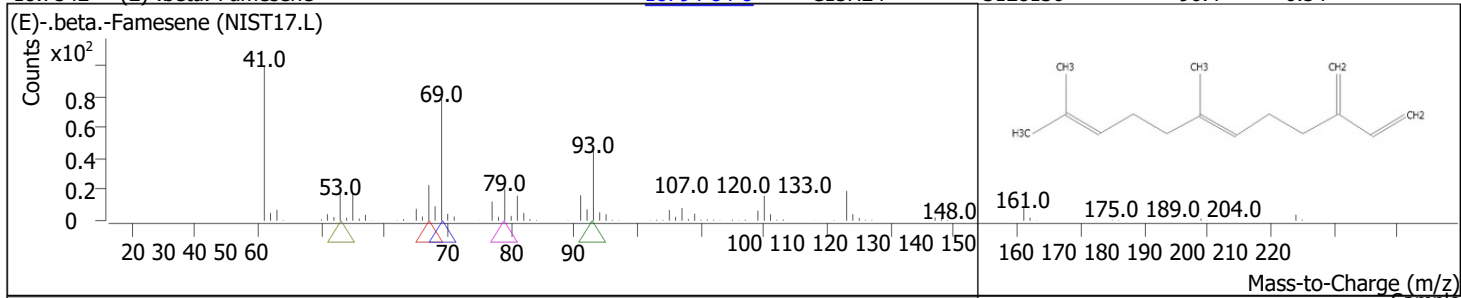
RT	Compound Name	CAS#	Formula	Area	Match Score	Sample	Sample
18.4166	1,4-Methanocycloocta[d]pyridazine, 1,4,4a,5,6,9,10,10a-octahydro-11,11-dimethyl-, (1.alpha.,4.alpha.,4a.alpha.,10a.alpha.)-	<a href="#">1000221-85-9</a>	C13H20N2	64453	85.3	0.01	0.04



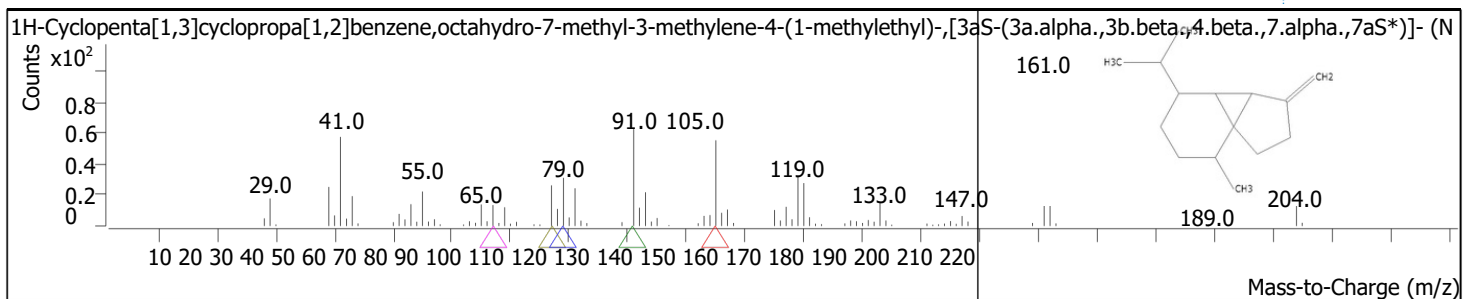
RT	Compound Name	CAS#	Formula	Area	Match Score	Sample	Sample
18.6340	Humulene	<a href="#">6753-98-6</a>	C15H24	817004	96.1	0.14	0.45



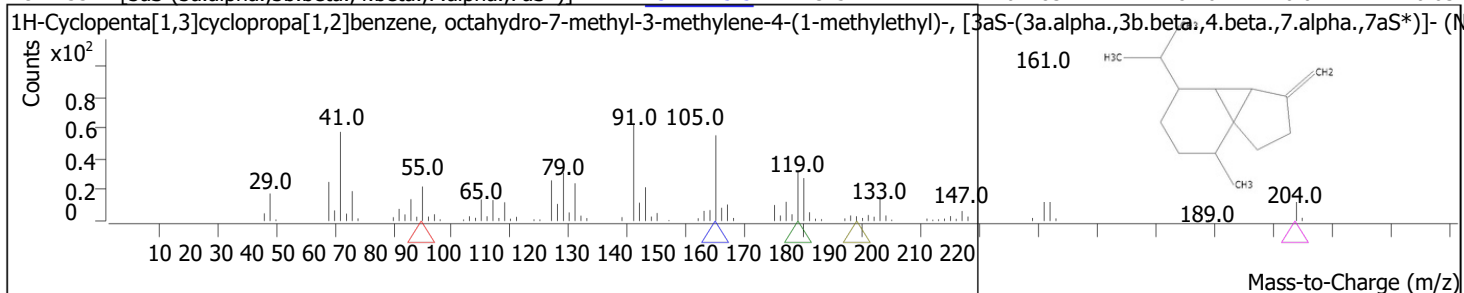
RT	Compound Name	CAS#	Formula	Area	Match Score	Sample	Sample
18.7542	(E)-.beta.-Famesene	<a href="#">18794-84-8</a>	C15H24	3128136	96.4	0.54	1.71



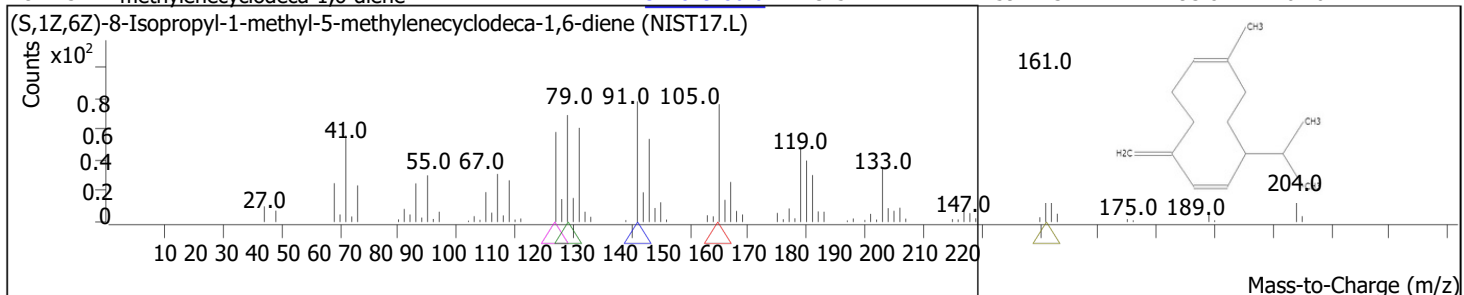
RT	Compound Name	CAS#	Formula	Area	Match Score	Sample	Sample
18.9544	1H-Cyclopenta[1,3]cyclopropa[1,2]benzene, octahydro-7-methyl-3-methylene-4-(1-methylethyl)-, [3aS-(3a.alpha.,3b.beta.,4.beta.,7.alpha.,7aS*)]-	<a href="#">13744-15-5</a>	C15H24	70713	80.7	0.01	0.04



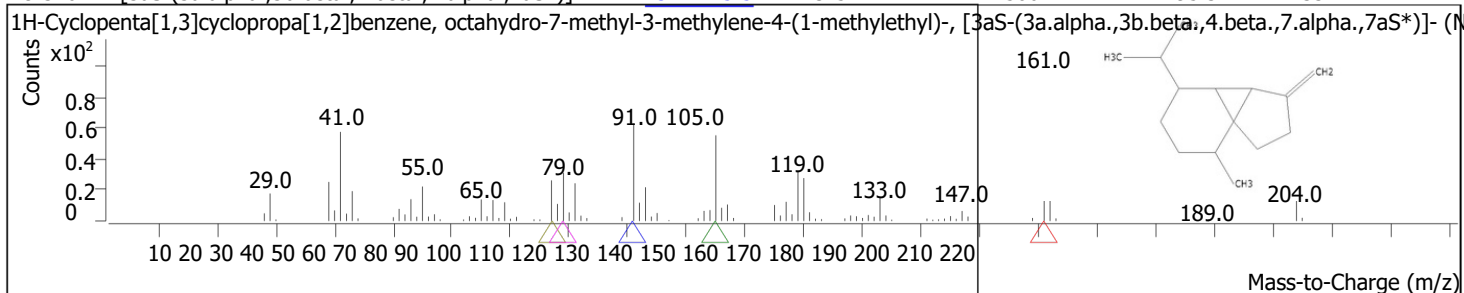
RT	Compound Name	CAS#	Formula	Area	Match Score	Sample	Sample
19.1433	1H-Cyclopenta[1,3]cyclopropa[1,2]benzene, octahydro-7-methyl-3-methylene-4-(1-methylethyl)-, [3aS-(3a.alpha.,3b.beta.,4.beta.,7.alpha.,7aS*)]-	<a href="#">13744-15-5</a>	C15H24	61183	81.6	0.01	0.03



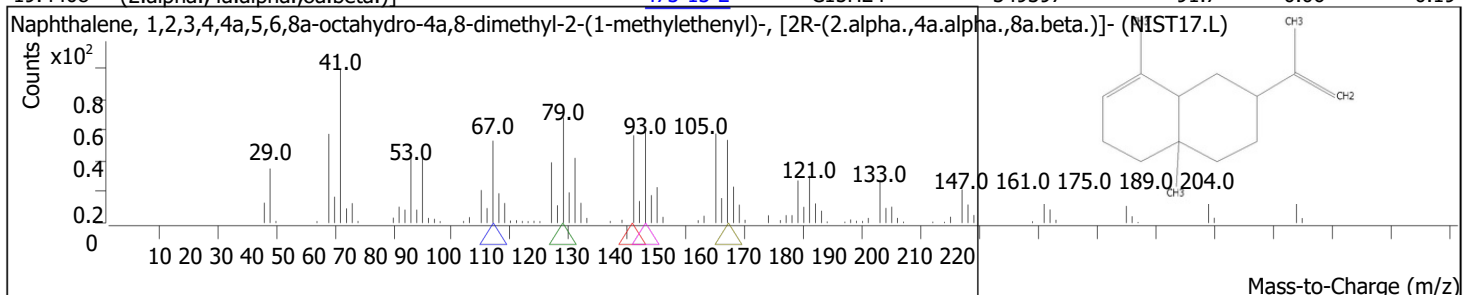
RT	Compound Name	CAS#	Formula	Area	Match Score	Sample	Sample
19.2234	(S,1Z,6Z)-8-Isopropyl-1-methyl-5-methylenecyclodeca-1,6-diene	<a href="#">317819-80-0</a>	C15H24	597123	93.8	0.10	0.33



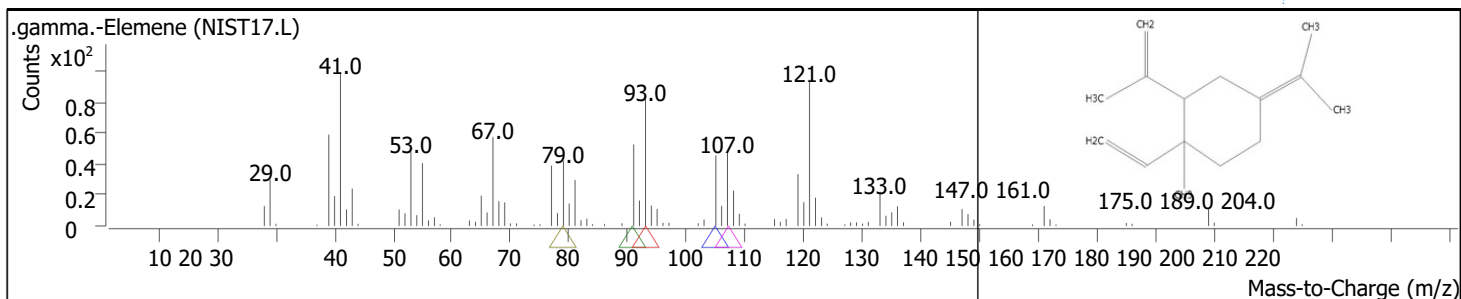
RT	Compound Name	CAS#	Formula	Area	Match Score	Sample	Sample
19.3264	1H-Cyclopenta[1,3]cyclopropa[1,2]benzene, octahydro-7-methyl-3-methylene-4-(1-methylethyl)-, [3aS-(3a.alpha.,3b.beta.,4.beta.,7.alpha.,7aS*)]-	<a href="#">13744-15-5</a>	C15H24	7750612	95.3	1.33	4.24



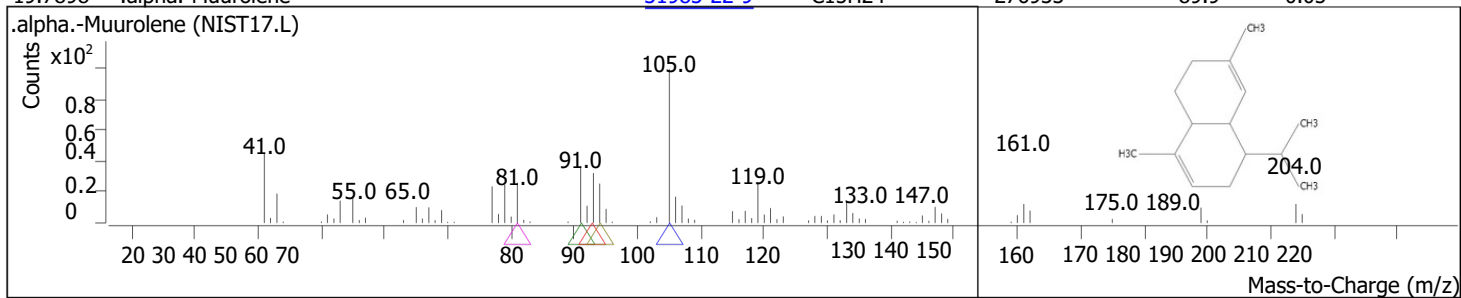
RT	Compound Name	CAS#	Formula	Area	Match Score	Sample	Sample
19.4408	Naphthalene, 1,2,3,4,4a,5,6,8a-octahydro-4a,8-dimethyl-2-(1-methylethenyl)-, [2R-(2.alpha.,4a.alpha.,8a.beta.)]-	<a href="#">473-13-2</a>	C15H24	349397	91.7	0.06	0.19



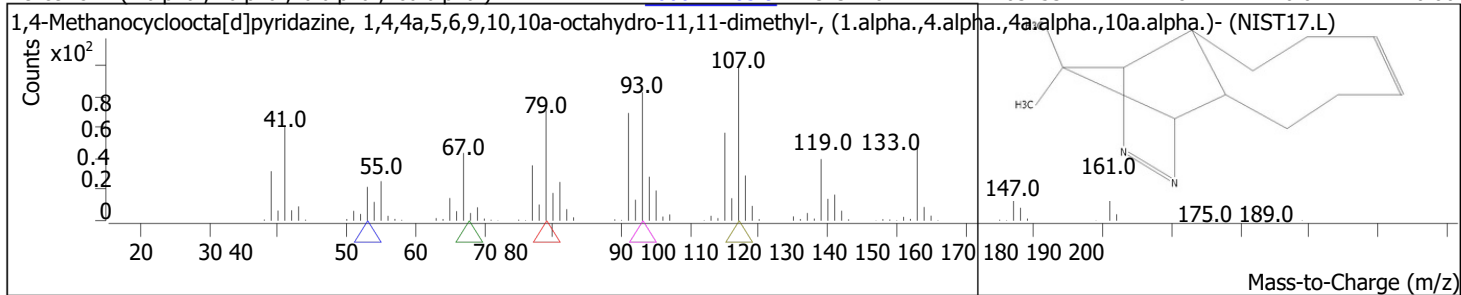
RT	Compound Name	CAS#	Formula	Area	Match Score	Sample	Sample
19.6640	.gamma.-Elemene	<a href="#">29873-99-2</a>	C15H24	1840702	92.7	0.32	1.01



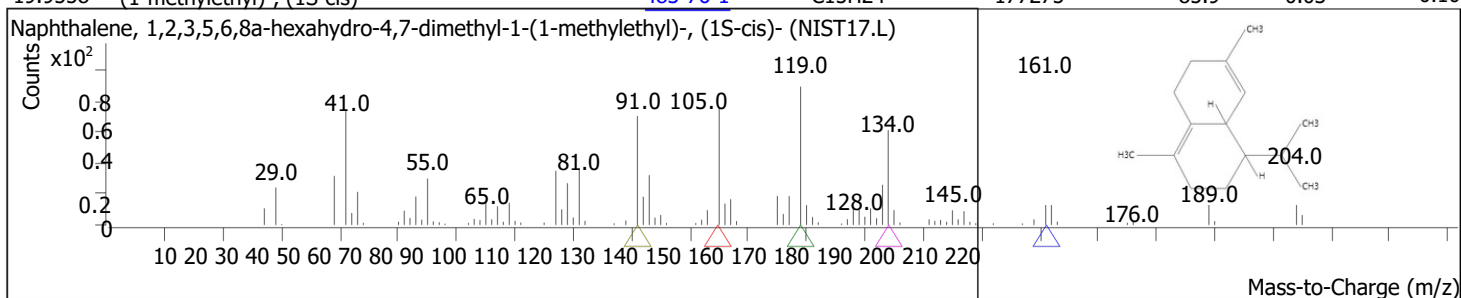
RT	Compound Name	CAS#	Formula	Area	Match Score	Sample	Sample
19.7898	.alpha.-Muurolene	<a href="#">31983-22-9</a>	C15H24	276933	89.9	0.05	0.15



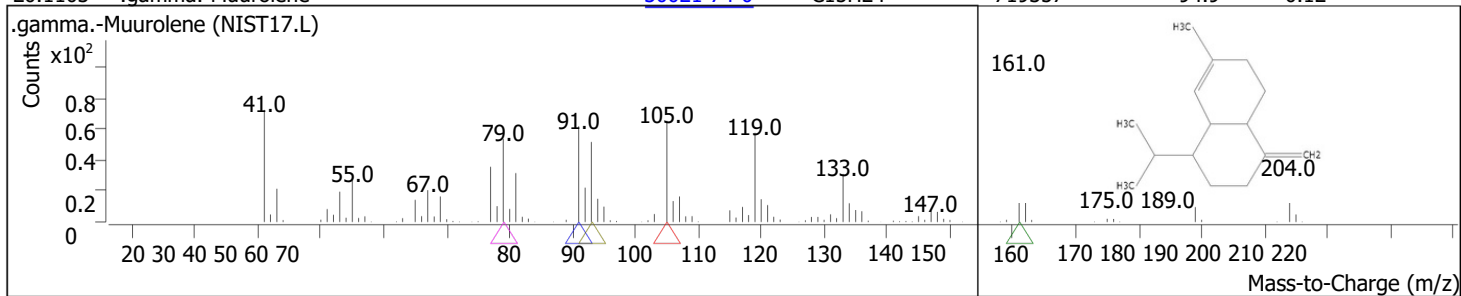
RT	Compound Name	CAS#	Formula	Area	Match Score	Sample	Sample
19.8928	1,4-Methanocycloocta[d]pyridazine, 1,4,4a,5,6,9,10,10a-octahydro-11,11-dimethyl-, (1.alpha.,4.alpha.,4a.alpha.,10a.alpha.)-	<a href="#">1000221-85-9</a>	C13H20N2	103253	87.1	0.02	0.06



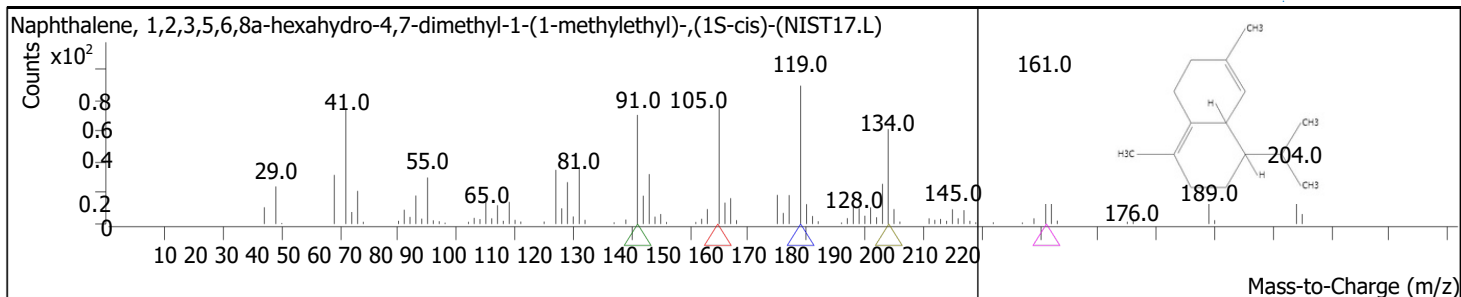
RT	Compound Name	CAS#	Formula	Area	Match Score	Sample	Sample
19.9558	Naphthalene, 1,2,3,5,6,8a-hexahydro-4,7-dimethyl-1-(1-methylethyl)-, (1S-cis)-	<a href="#">483-76-1</a>	C15H24	177275	85.9	0.03	0.10



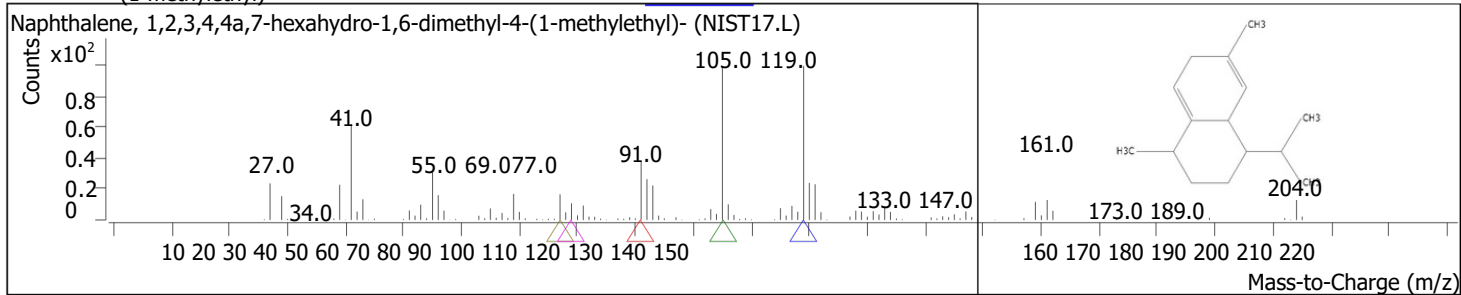
RT	Compound Name	CAS#	Formula	Area	Match Score	Sample	Sample
20.1103	.gamma.-Muurolene	<a href="#">30021-74-0</a>	C15H24	719357	94.9	0.12	0.39



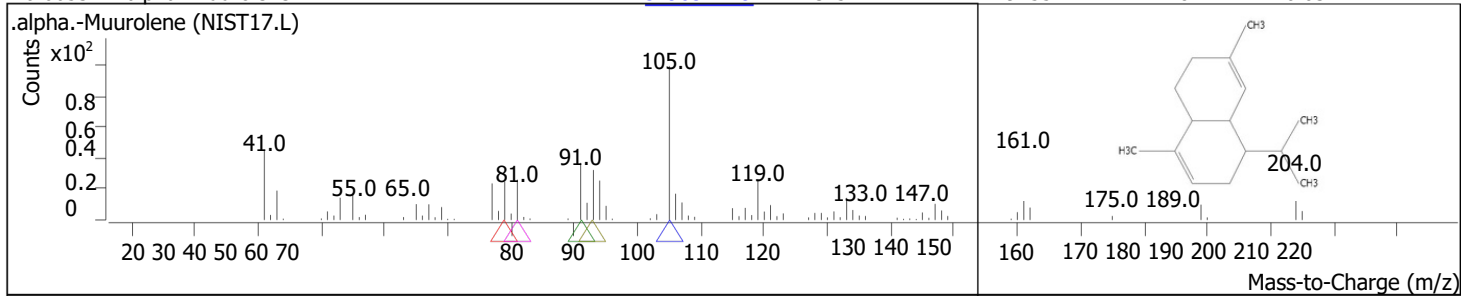
RT	Compound Name	CAS#	Formula	Area	Match Score	Sample	Sample
20.3392	Naphthalene, 1,2,3,5,6,8a-hexahydro-4,7-dimethyl-1-(1-methylethyl)-, (1S-cis)-	<a href="#">483-76-1</a>	C15H24	1648803	96.4	0.28	0.90



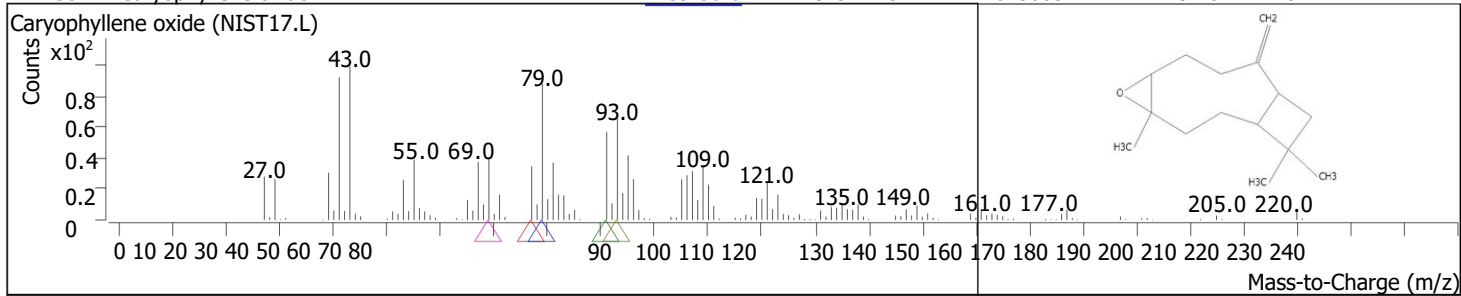
RT	Compound Name	CAS#	Formula	Area	Match Score	Sample	Sample
20.5452	Naphthalene, 1,2,3,4,4a,7-hexahydro-1,6-dimethyl-4-(1-methylethyl)-	<a href="#">16728-99-7</a>	C15H24	78154	82.6	0.01	0.04



RT	Compound Name	CAS#	Formula	Area	Match Score	Sample	Sample
20.6653	.alpha.-Muuroleone	<a href="#">31983-22-9</a>	C15H24	194557	87.4	0.03	0.11



RT	Compound Name	CAS#	Formula	Area	Match Score	Sample	Sample
21.7582	Caryophyllene oxide	<a href="#">1139-30-6</a>	C15H24O	615005	92.0	0.11	0.34



RT	Compound Name	CAS#	Formula	Area	Match Score	Sample	Sample
22.0729	Cycloheptane, 4-methylene-1-methyl-2-(2-methyl-1-propen-1-yl)-1-vinyl-	<a href="#">1000159-38-5</a>	C15H24	1332843	91.6	0.23	0.73

