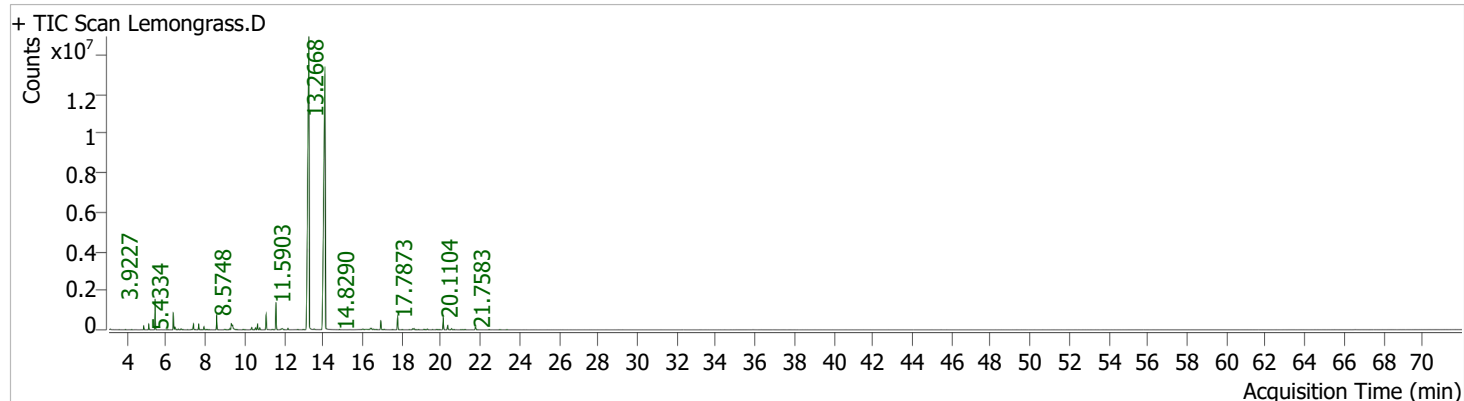


Batch	Path	D:\MassHunter\Data\A. Kapat\NMR		
Analysis File Name		new2.uaf		
Analyst Name		Basab-GCMS		
Analysis Time		20-03-2026 09:09:52		
Data File Name		Lemongrass.D	Data Path Name	D:\MassHunter\Data\A. Kapat\NMR
Sample Name Acq		LEM-DHL-2511 / PEPPERWOODD	Sample Type	Sample
Method File Acq		Bio Oil pyrolysis4_new	Acq Method Path	D:\MassHunter\GCMS\methods\
Time Instrument		11-03-2026 19:53:48	Operator	
Name		GCMS	Dilution	1

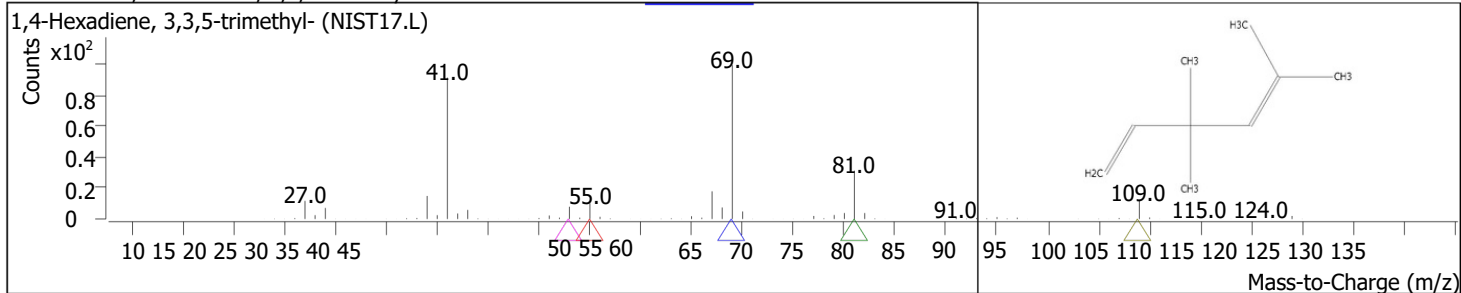


RT	Compound Name	CAS#	Formula	Area	Match Score	Sample	Sample
3.1674	1,4-Hexadiene, 3,3,5-trimethyl-	<a href="#">74753-00-7</a> <a href="#">7423-</a>	C9H16	26139	78.1	0.02	0.04
3.6080	1-Hexene, 3,5-dimethyl-	<a href="#">69-0</a> <a href="#">123-19-</a>	C8H16	6774	71.7	0.00	0.01
3.9227	4-Heptanone	<a href="#">3</a> <a href="#">37050-05-8</a>	C7H14O	25224	82.5	0.02	0.04
4.2260	3,4-Octadiene, 7-methyl-	<a href="#">508-32-7</a> <a href="#">80-</a>	C9H16	17967	83.4	0.01	0.03
4.8554	Tricyclo[2.2.1.0(2,6)]heptane, 1,7,7-trimethyl-	<a href="#">56-8</a> <a href="#">79-92-5</a>	C10H16	354017	97.4	0.21	0.51
5.1129	.alpha.-Pinene	<a href="#">1000460-73-6</a>	C10H16	551504	98.0	0.33	0.79
5.4334	Camphene	<a href="#">3387-41-5</a>	C10H16	2974433	97.7	1.80	4.27
6.0285	Spiro[bicyclo[3.1.0]hexane-2,1'-cyclopropane]	<a href="#">110-93-0</a>	C8H12	12342	84.8	0.01	0.02
6.0914	Bicyclo[3.1.0]hexane, 4-methylene-1-(1-methylethyl)-	<a href="#">92760-25-3</a>	C10H16	13257	83.9	0.01	0.02
6.3603	5-Hepten-2-one, 6-methyl-	<a href="#">286-62-4</a>	C8H14O	1628569	94.9	0.99	2.34
6.4462	2,3-Dehydro-1,8-cineole	<a href="#">124-13-0</a>	C10H16O	411893	87.2	0.25	0.59
6.6178	9-Oxabicyclo[6.1.0]nonane	<a href="#">586-63-0</a>	C8H14O	92291	83.9	0.06	0.13
6.7609	Octanal	<a href="#">460-01-5</a>	C8H16O	153022	85.9	0.09	0.22
7.0870	Cyclohexene, 3-methyl-6-(1-methylethylidene)-	<a href="#">138-86-3</a>	C10H16	10793	73.4	0.01	0.02
7.2873	2,6-Dimethyl-1,3,5,7-octatetraene, E,E-	<a href="#">3779-61-1</a>	C10H14	60852	89.1	0.04	0.09
7.3846	Limonene	<a href="#">86958-26-1</a>	C10H16	707980	96.5	0.43	1.02
7.6535	trans-.beta.-Ocimene	<a href="#">13877-91-3</a>	C10H16	617418	97.7	0.37	0.89
7.8252	3H-Pyrazole, 5-ethynyl-3,3-dimethyl-	<a href="#">106-72-9</a>	C7H8N2	13903	77.4	0.01	0.02
7.9282	.beta.-Ocimene	<a href="#">2867-05-2</a>	C10H16	343048	97.2	0.21	0.49
8.0827	5-Heptenal, 2,6-dimethyl-	<a href="#">4485-09-0</a>	C9H16O	87052	91.2	0.05	0.13
8.1914	Bicyclo[3.1.0]hex-2-ene, 2-methyl-5-(1-methylethyl)-	<a href="#">99805-90-0</a>	C10H16	21213	79.9	0.01	0.03
8.5748	4-Nonanone	<a href="#">89-00-9</a>	C9H18O	1575215	96.4	0.95	2.26
8.9810	Cyclohexene, 4-methyl-3-(1-methylethylidene)-	<a href="#">15186-51-3</a>	C10H16	110666	89.7	0.07	0.16
9.1870	2,3-Pyridinedicarboxylic acid	<a href="#">78-70-6</a>	C7H5NO4	21115	67.2	0.01	0.03
9.2442	3-Methyl-2-(2-methyl-2-butenyl)-furan	<a href="#">21391-98-0</a>	C10H14O	139590	89.7	0.08	0.20
9.3186	Linalool	<a href="#">17530-24-4</a>	C10H18O	976878	95.7	0.59	1.40
9.3758	1-Cyclohexene-1-carboxaldehyde, 4-(1-methylethyl)-	<a href="#">17065-18-8</a>	C10H16O	940903	75.8	0.57	1.35
9.5818	di-t-Butylacetylene	<a href="#">21391-98-0</a>	C10H18	67607	74.2	0.04	0.10
9.9252	Bicyclo[2.1.0]pentane, 1,4-dimethyl-	<a href="#">55050-40-3</a>	C7H12	72415	84.2	0.04	0.10
10.3543	1-Cyclohexene-1-carboxaldehyde, 4-(1-methylethyl)-		C10H16O	322661	82.5	0.20	0.46
10.5431	6-Octenal, 7-methyl-3-methylene-		C10H16O	238781	93.6	0.14	0.34

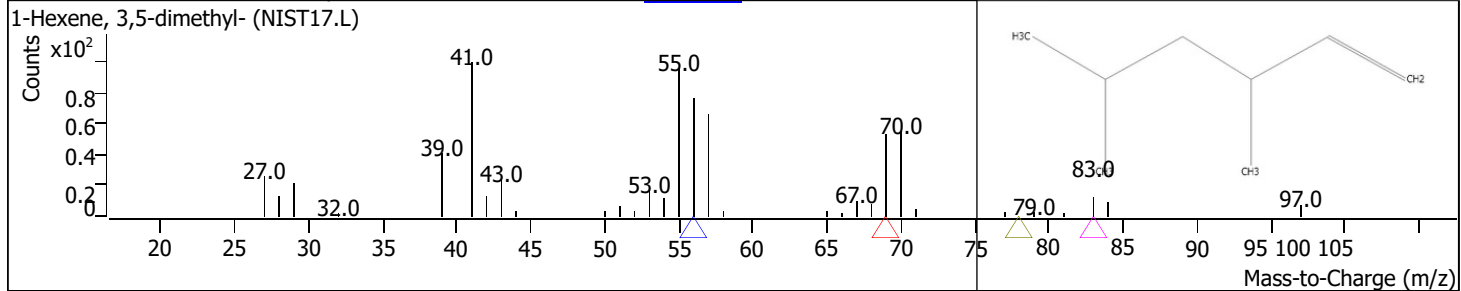
RT	Compound Name	CAS#	Formula	Area	Match Score	Sample	Sample
10.6519	2,2-Dimethylocta-3,4-dienal	<a href="#">6_2385-77-5</a>	C10H16O	667349	93.5	0.40	0.96
10.7663	6-Octenal, 3,7-dimethyl-, (R)-	<a href="#">1000414-18-0</a>	C10H18O	240835	95.5	0.15	0.35
11.0925	Isoneral	<a href="#">507-70-0</a>	C10H16O	1783791	95.7	1.08	2.56
11.4072	endo-Borneol	<a href="#">55722-59-3</a>	C10H18O	92923	75.5	0.06	0.13
11.5903	3,6-Octadienal, 3,7-dimethyl-	<a href="#">1000157-89-1</a>	C10H16O	3164451	96.3	1.92	4.55
11.9107	1-Pentanol, 5-(methylenecyclopropyl)-	<a href="#">112-31-2</a>	C9H16O	379440	82.7	0.23	0.55
12.2025	Decanal	<a href="#">1686-14-2</a>	C10H20O	166965	94.0	0.10	0.24
12.7004	3-Oxatricyclo[4.1.1.0(2,4)]octane, 2,7,7-trimethyl-	<a href="#">16996-12-6</a>	C10H16O	42301	78.6	0.03	0.06
12.9807	Oxiranecarboxaldehyde, 3-methyl-3-(4-methyl-3-pentenyl)-	<a href="#">106-26-3</a> <a href="#">89-81-6</a>	C10H16O2	51876	80.4	0.03	0.07
13.2668	Neral	<a href="#">141-27-5</a>	C10H16O	69580057	98.9	42.13	100.00
13.5301	2-Cyclohexen-1-one, 3-methyl-6-(1-methylethyl)-	<a href="#">105-86-2</a>	C10H16O	70556	86.9	0.04	0.10
14.0851	2,6-Octadienal, 3,7-dimethyl-, (E)-	<a href="#">23986-74-5</a>	C10H16O	68902156	98.9	41.72	99.03
14.8290	Geranyl formate	<a href="#">18479-48-6</a>	C11H18O2	43016	86.3	0.03	0.06
16.0249	Germacrene D		C15H24	104220	85.3	0.06	0.15
16.1794	5-Hepten-1-ol, 2-ethenyl-6-methyl-		C10H18O	138972	73.9	0.08	0.20
16.4025	1,2,4-Metheno-1H-indene, octahydro-1,7a-dimethyl-5-(1-methylethyl)-, [1S-(1.alpha.,2.alpha.,3a.beta.,4.alpha.,5.alpha.,7a.beta.,8S*)]-	<a href="#">22469-52-9</a>	C15H24	211131	88.3	0.13	0.30
16.4597	Isosativene	<a href="#">24959-83-9</a>	C15H24	178170	82.9	0.11	0.26
16.5742	Copaene	<a href="#">3856-25-5</a>	C15H24	92812	81.6	0.06	0.13
16.6943	Germacrene D	<a href="#">23986-74-5</a>	C15H24	54257	81.9	0.03	0.08
16.9289	2,6-Octadien-1-ol, 3,7-dimethyl-, acetate, (Z)-	<a href="#">141-12-8</a>	C12H20O2	1100539	94.5	0.67	1.58
17.0319	(-)-Myrtenol	<a href="#">19894-97-4</a>	C10H16O	34706	68.0	0.02	0.05
17.1121	Cyclohexane, 1-ethenyl-1-methyl-2,4-bis(1-methylethenyl)-	<a href="#">110823-68-2</a>	C15H24	67896	86.1	0.04	0.10
17.5355	13-Tetradec-11-yn-1-ol	<a href="#">1000131-00-4</a>	C14H24O	21296	70.0	0.01	0.03
17.7873	Bicyclo[7.2.0]undec-4-ene, 4,11,11-trimethyl-8-methylene-, [1R-(1R*,4Z,9S*)]-	<a href="#">118-65-0</a>	C15H24	1644521	96.1	1.00	2.36
18.0161	Germacrene D	<a href="#">23986-74-5</a>	C15H24	22920	75.8	0.01	0.03
18.3823	1,8-Nonadiene, 2-methyl-5,7-dimethylene-	<a href="#">1000152-68-8</a>	C12H18	12716	68.3	0.01	0.02
18.5540	Phenol, 2-methoxy-4-(1-propenyl)-	<a href="#">97-54-1</a>	C10H12O2	163192	80.4	0.10	0.23
18.6284	Humulene	<a href="#">6753-98-6</a>	C15H24	219153	87.4	0.13	0.31
18.8516	1H-Cyclopenta[1,3]cyclopropa[1,2]benzene, octahydro-7-methyl-3-methylene-4-(1-methylethyl)-, [3aS-(3a.alpha.,3b.beta.,4.beta.,7.alpha.,7aS*)]-		C15H24	219153	87.4	0.13	0.31
18.8516	cis-muuro-la-3,5-diene	<a href="#">13744-15-5</a>	C15H24	39163	72.1	0.02	0.06
19.1319	1,8-Nonadiene, 2-methyl-5,7-dimethylene-	<a href="#">1000365-95-4</a>	C15H24	83797	84.7	0.05	0.12
19.2063	Germacrene D	<a href="#">1000152-68-8</a>	C12H18	24025	78.2	0.01	0.03
19.3036	Germacrene D	<a href="#">23986-74-5</a>	C15H24	110599	90.9	0.07	0.16
19.5668	1,8-Nonadiene, 2-methyl-5,7-dimethylene-	<a href="#">23986-74-5</a>	C15H24	24765	76.4	0.01	0.04
19.7842	Benzene, 1-(1,5-dimethyl-4-hexenyl)-4-methyl-	<a href="#">1000152-68-8</a>	C12H18	71199	76.2	0.04	0.10
19.8987	(1S,4aR,8aS)-1-Isopropyl-7-methyl-4-methylene-1,2,3,4,4a,5,6,8a-octahydronaphthalene	<a href="#">644-30-4</a> <a href="#">6980-46-7</a> <a href="#">28976-67-2</a>	C15H22	26664	72.9	0.02	0.04
20.1104	Naphthalene, 1,2,3,5,6,8a-hexahydro-4,7-dimethyl-1-(1-methylethyl)-, (1S-cis)-	<a href="#">23986-74-5</a>	C15H24	1508389	95.9	0.91	2.17
20.3393	(R)-1-Methyl-4-(6-methylhept-5-en-2-yl)cyclohexa-1,4-diene	<a href="#">1000190-16-2</a>	C15H24	595544	96.4	0.36	0.86
20.5338	Germacrene D	<a href="#">74663-83-5</a>	C15H24	188718	89.2	0.11	0.27
20.6540	(1,3-Dimethyl-2-methylene-cyclopentyl)-methanol	<a href="#">78-36-4</a>	C15H24	39443	73.7	0.02	0.06
20.9973	1,5-Heptadiene, 2,5-dimethyl-3-methylene-	<a href="#">1139-30-6</a>	C9H16O	13767	71.0	0.01	0.02
21.1003	1,5-Dimethyl-1-vinyl-4-hexenyl butyrate	<a href="#">2436-90-0</a>	C10H16	18169	70.3	0.01	0.03
21.2205	Caryophyllene oxide		C14H24O2	43782	84.2	0.03	0.06
21.7583	1,6-Octadiene, 3,7-dimethyl-		C15H24O	433328	88.6	0.26	0.62
22.4450			C10H18	32928	79.8	0.02	0.05

RT	Compound Name	CAS#	Formula	Area	Match Score	Sample	Sample
22.9829	(1R,5R)-2-Methyl-5-((R)-6-methylhept-5-en-2-yl)bicyclo[3.1.0]hex-2-ene	<a href="#">58319-06-5</a>	C15H24	25871	67.1	0.02	0.04
23.3720	.alpha.-Bourbonene	<a href="#">1000293-01-9</a>	C15H24	18445	61.5	0.01	0.03

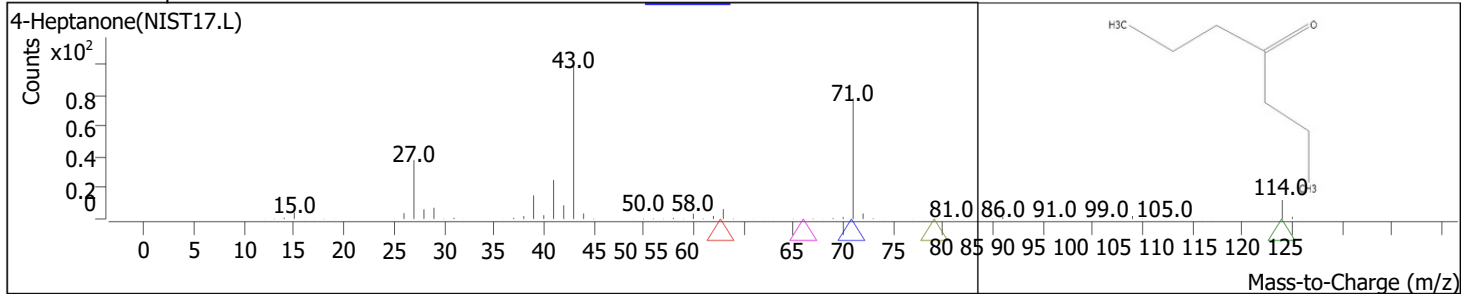
RT	Compound Name	CAS#	Formula	Area	Match Score	Sample	Sample
3.1674	1,4-Hexadiene, 3,3,5-trimethyl-	<a href="#">74753-00-7</a>	C9H16	26139	78.1	0.02	0.04



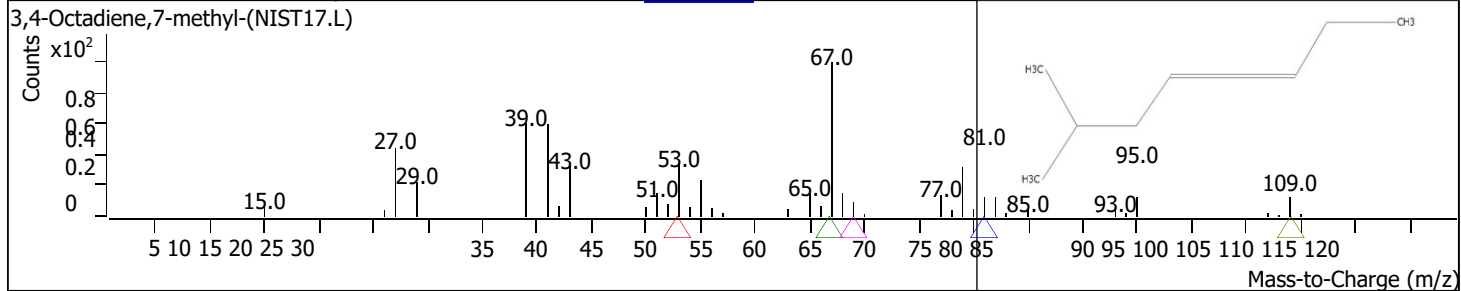
RT	Compound Name	CAS#	Formula	Area	Match Score	Sample	Sample
3.6080	1-Hexene, 3,5-dimethyl-	<a href="#">7423-69-0</a>	C8H16	6774	71.7	0.00	0.01



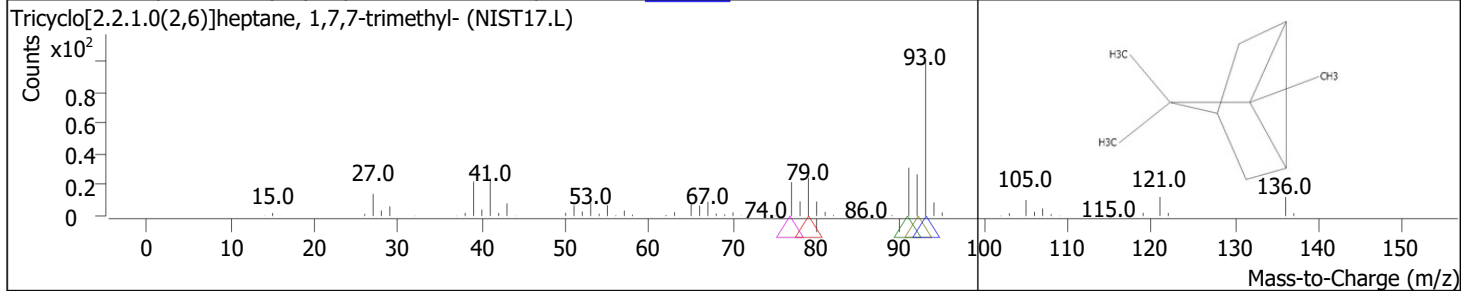
RT	Compound Name	CAS#	Formula	Area	Match Score	Sample	Sample
3.9227	4-Heptanone	<a href="#">123-19-3</a>	C7H14O	25224	82.5	0.02	0.04



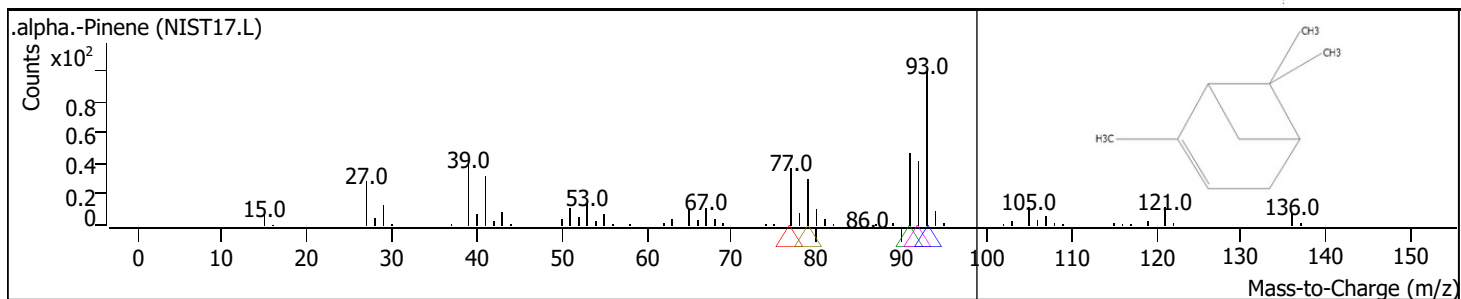
RT	Compound Name	CAS#	Formula	Area	Match Score	Sample	Sample
4.2260	3,4-Octadiene, 7-methyl-	<a href="#">37050-05-8</a>	C9H16	17967	83.4	0.01	0.03



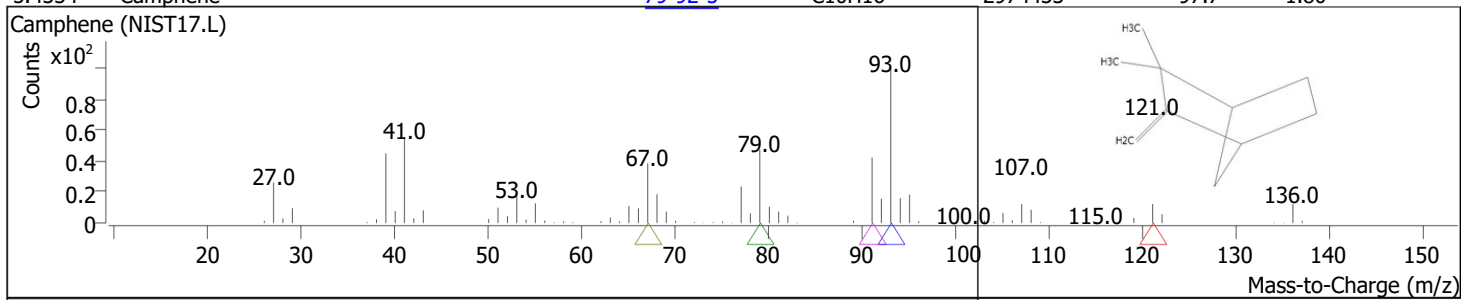
RT	Compound Name	CAS#	Formula	Area	Match Score	Sample	Sample
4.8554	Tricyclo[2.2.1.0(2,6)]heptane, 1,7,7-trimethyl-	<a href="#">508-32-7</a>	C10H16	354017	97.4	0.21	0.51



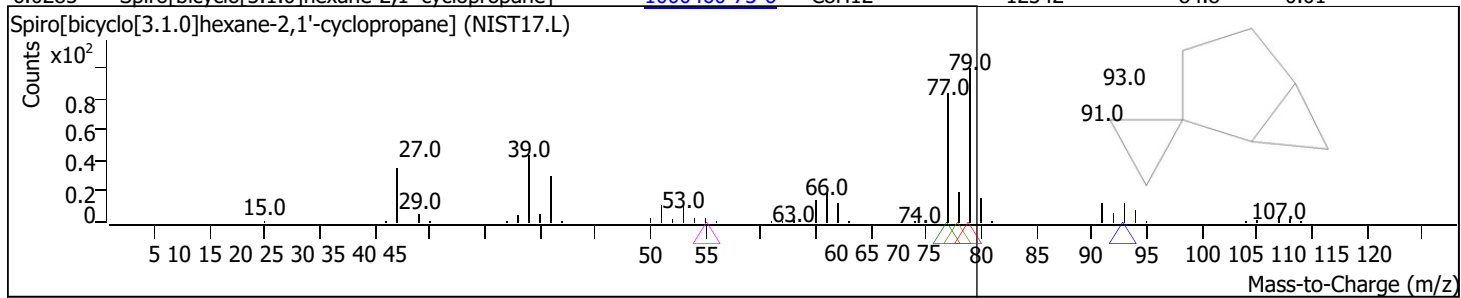
RT	Compound Name	CAS#	Formula	Area	Match Score	Sample	Sample
5.1129	.alpha.-Pinene	<a href="#">80-56-8</a>	C10H16	551504	98.0	0.33	0.79



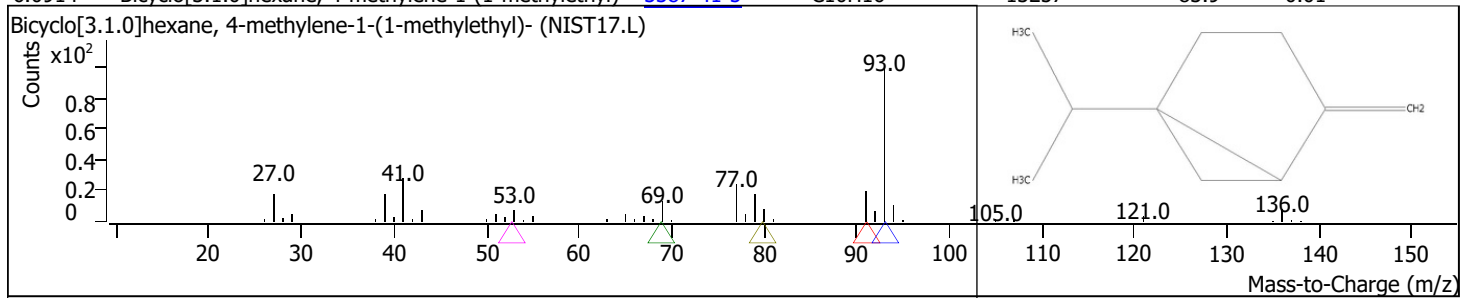
RT	Compound Name	CAS#	Formula	Area	Match Score	Sample	Sample
5.4334	Camphene	<a href="#">79-92-5</a>	C10H16	2974433	97.7	1.80	4.27



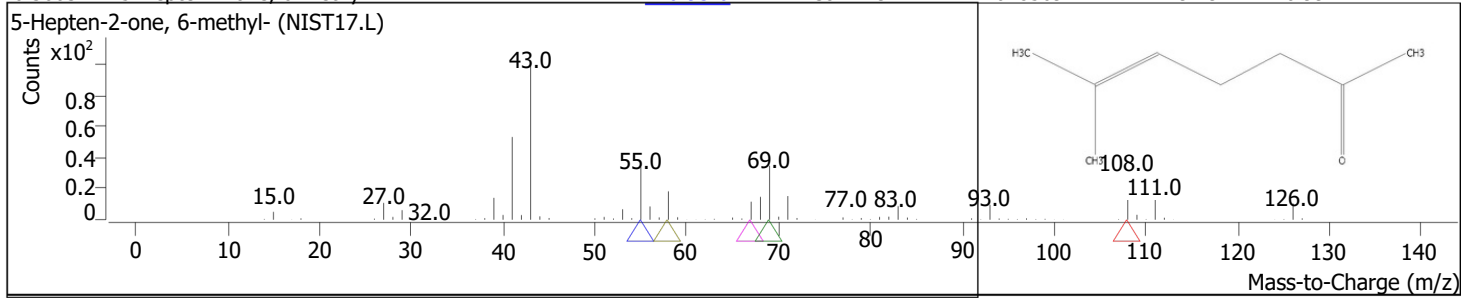
RT	Compound Name	CAS#	Formula	Area	Match Score	Sample	Sample
6.0285	Spiro[bicyclo[3.1.0]hexane-2,1'-cyclopropane]	<a href="#">1000460-73-6</a>	C8H12	12342	84.8	0.01	0.02



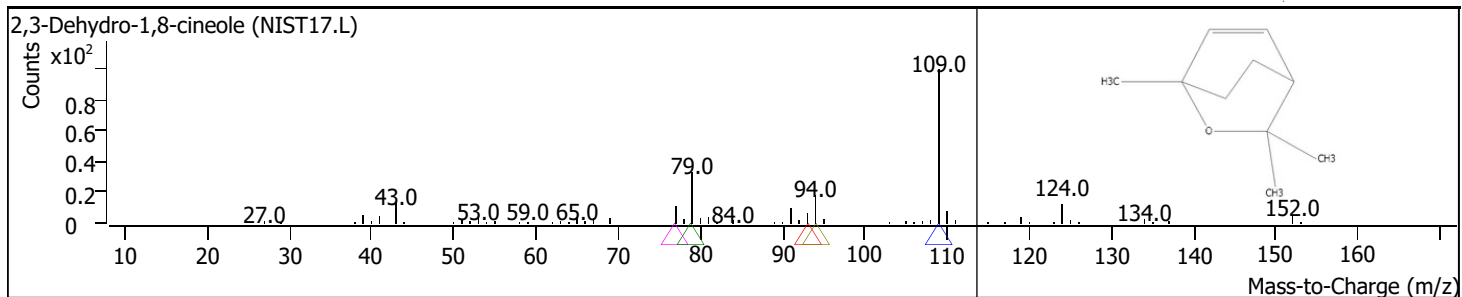
RT	Compound Name	CAS#	Formula	Area	Match Score	Sample	Sample
6.0914	Bicyclo[3.1.0]hexane, 4-methylene-1-(1-methylethyl)-	<a href="#">3387-41-5</a>	C10H16	13257	83.9	0.01	0.02



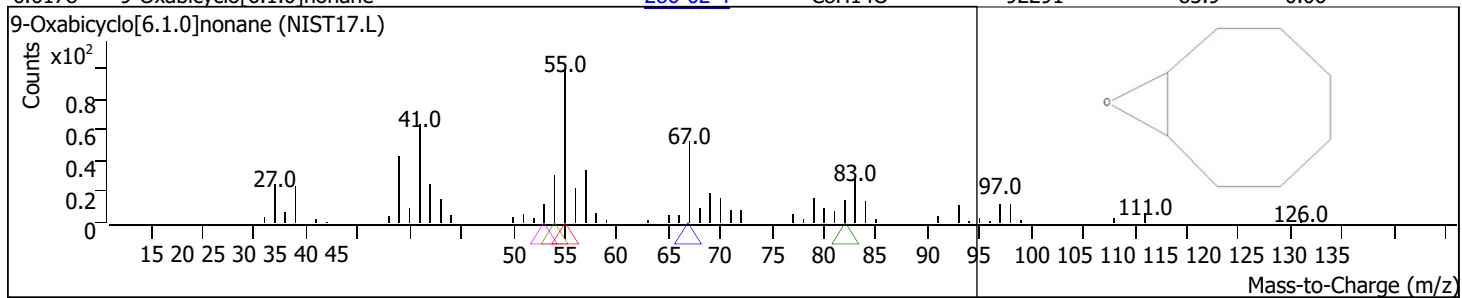
RT	Compound Name	CAS#	Formula	Area	Match Score	Sample	Sample
6.3603	5-Hepten-2-one, 6-methyl-	<a href="#">110-93-0</a>	C8H14O	1628569	94.9	0.99	2.34



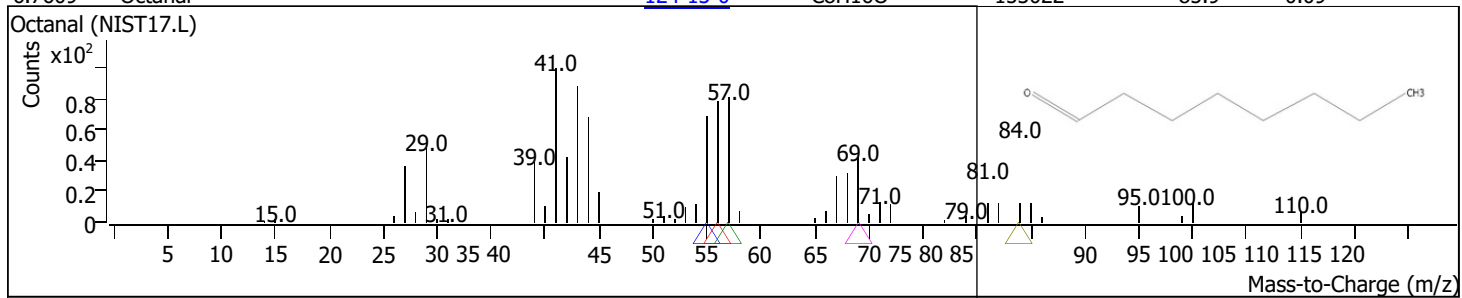
RT	Compound Name	CAS#	Formula	Area	Match Score	Sample	Sample
6.4462	2,3-Dehydro-1,8-cineole	<a href="#">92760-25-3</a>	C10H16O	411893	87.2	0.25	0.59



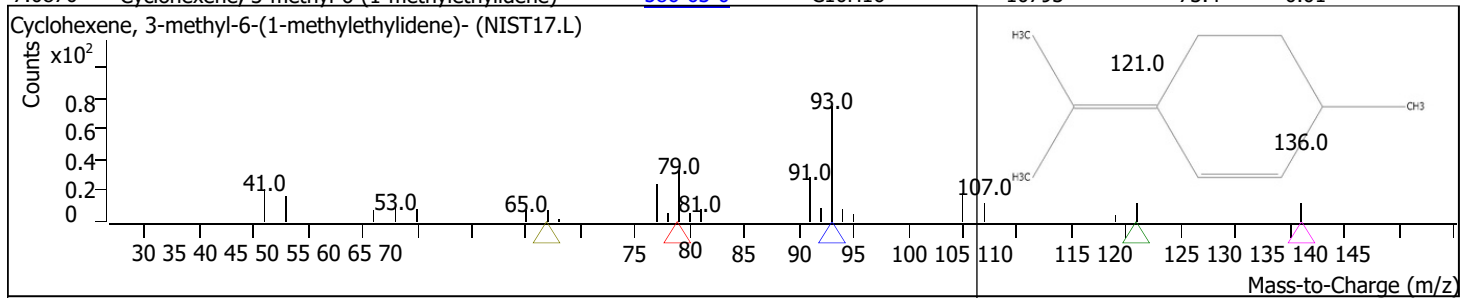
RT	Compound Name	CAS#	Formula	Area	Match Score	Sample	Sample
6.6178	9-Oxabicyclo[6.1.0]nonane	<a href="#">286-62-4</a>	C8H14O	92291	83.9	0.06	0.13



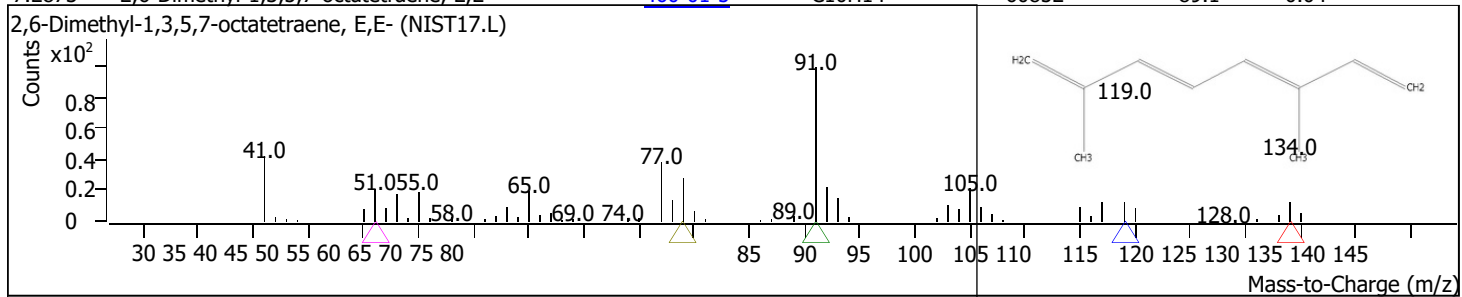
RT	Compound Name	CAS#	Formula	Area	Match Score	Sample	Sample
6.7609	Octanal	<a href="#">124-13-0</a>	C8H16O	153022	85.9	0.09	0.22



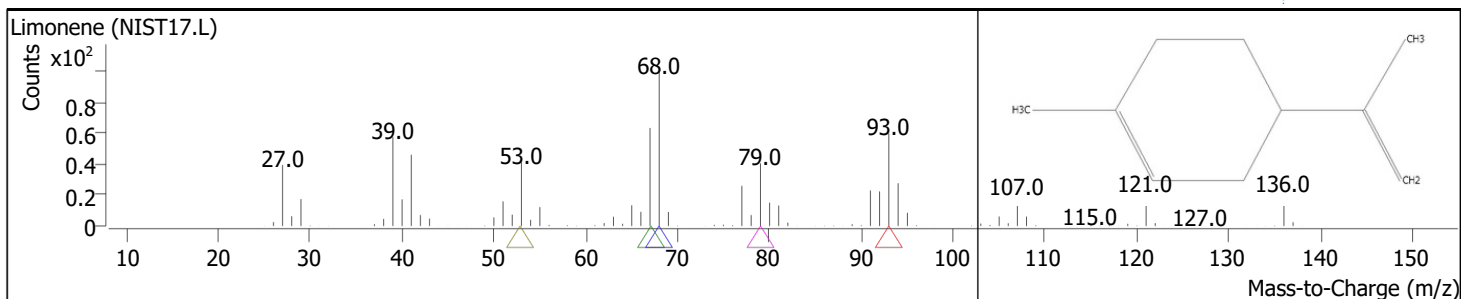
RT	Compound Name	CAS#	Formula	Area	Match Score	Sample	Sample
7.0870	Cyclohexene, 3-methyl-6-(1-methylethylidene)-	<a href="#">586-63-0</a>	C10H16	10793	73.4	0.01	0.02



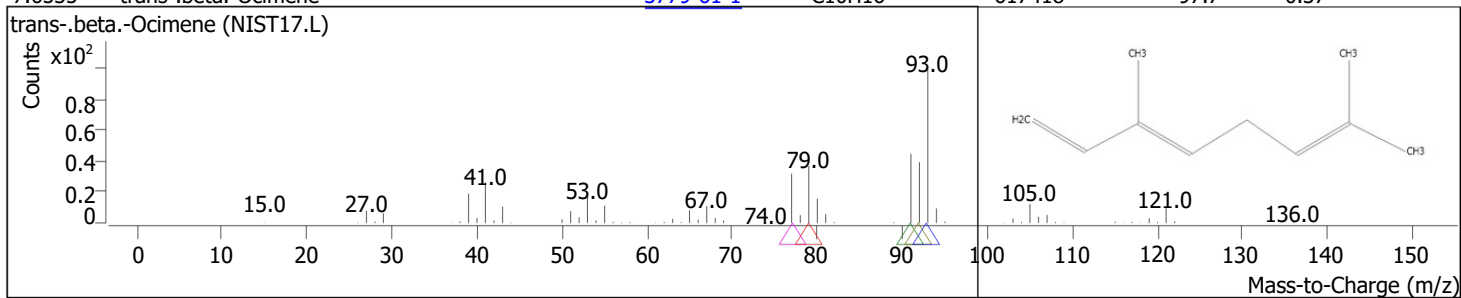
RT	Compound Name	CAS#	Formula	Area	Match Score	Sample	Sample
7.2873	2,6-Dimethyl-1,3,5,7-octatetraene, E,E-	<a href="#">460-01-5</a>	C10H14	60852	89.1	0.04	0.09



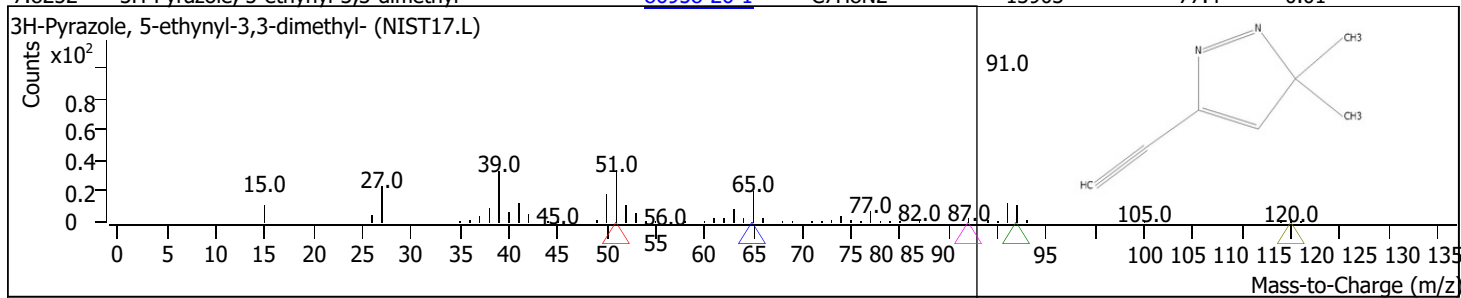
RT	Compound Name	CAS#	Formula	Area	Match Score	Sample	Sample
7.3846	Limonene	<a href="#">138-86-3</a>	C10H16	707980	96.5	0.43	1.02



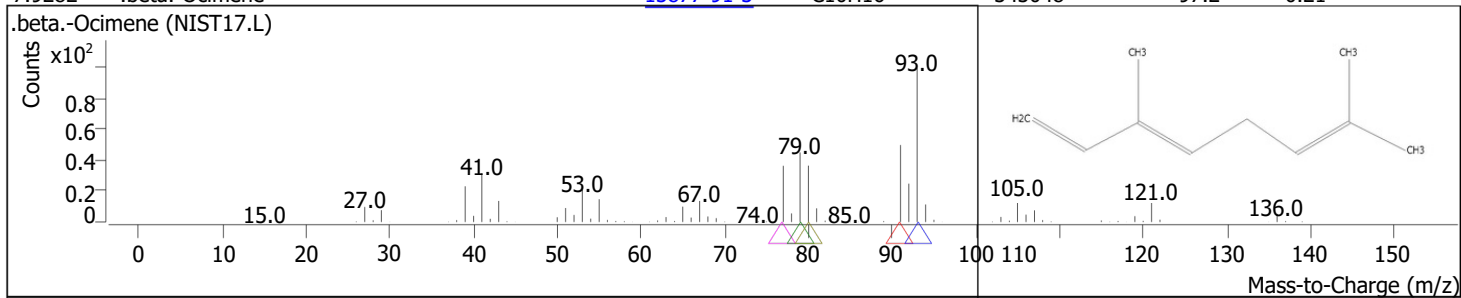
RT	Compound Name	CAS#	Formula	Area	Match Score	Sample	Sample
7.6535	trans-.beta.-Ocimene	<a href="#">3779-61-1</a>	C10H16	617418	97.7	0.37	0.89



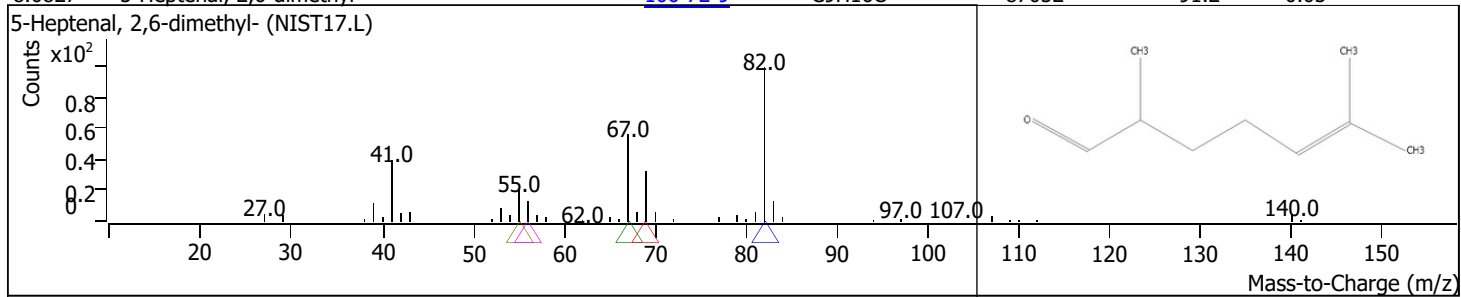
RT	Compound Name	CAS#	Formula	Area	Match Score	Sample	Sample
7.8252	3H-Pyrazole, 5-ethynyl-3,3-dimethyl-	<a href="#">86958-26-1</a>	C7H8N2	13903	77.4	0.01	0.02



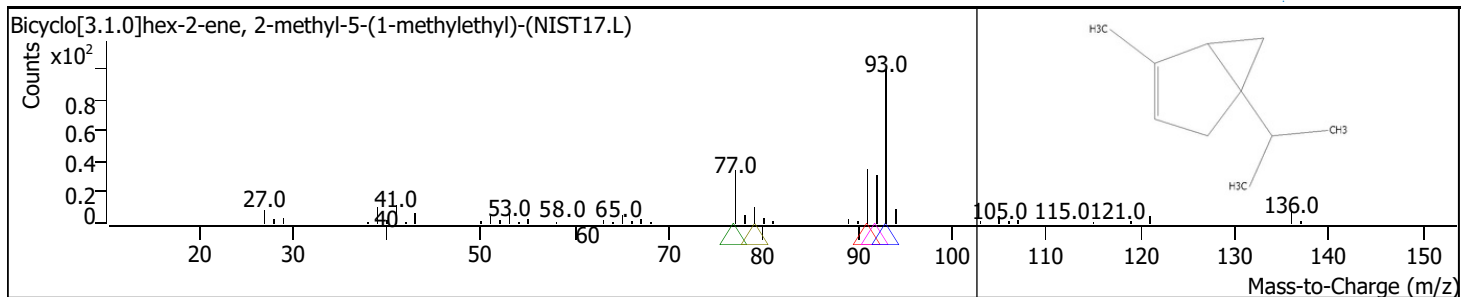
RT	Compound Name	CAS#	Formula	Area	Match Score	Sample	Sample
7.9282	.beta.-Ocimene	<a href="#">13877-91-3</a>	C10H16	343048	97.2	0.21	0.49



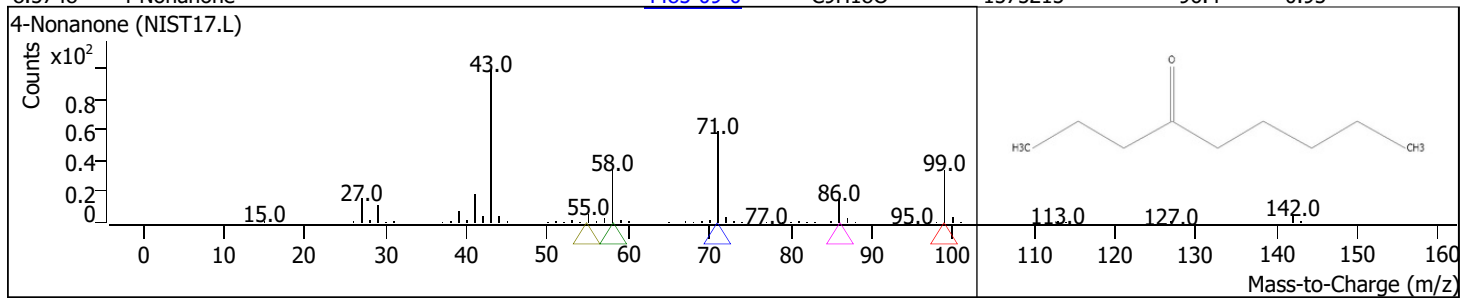
RT	Compound Name	CAS#	Formula	Area	Match Score	Sample	Sample
8.0827	5-Heptenal, 2,6-dimethyl-	<a href="#">106-72-9</a>	C9H16O	87052	91.2	0.05	0.13



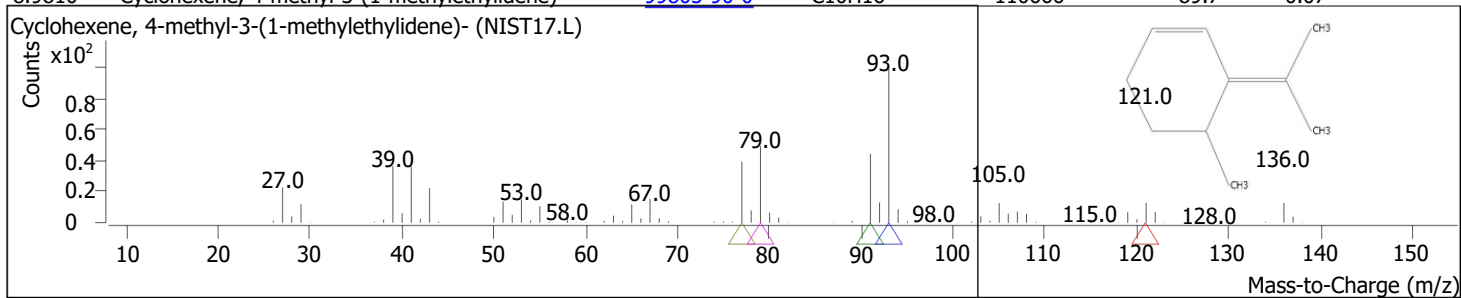
RT	Compound Name	CAS#	Formula	Area	Match Score	Sample	Sample
8.1914	Bicyclo[3.1.0]hex-2-ene, 2-methyl-5-(1-methylethyl)-	<a href="#">2867-05-2</a>	C10H16	21213	79.9	0.01	0.03



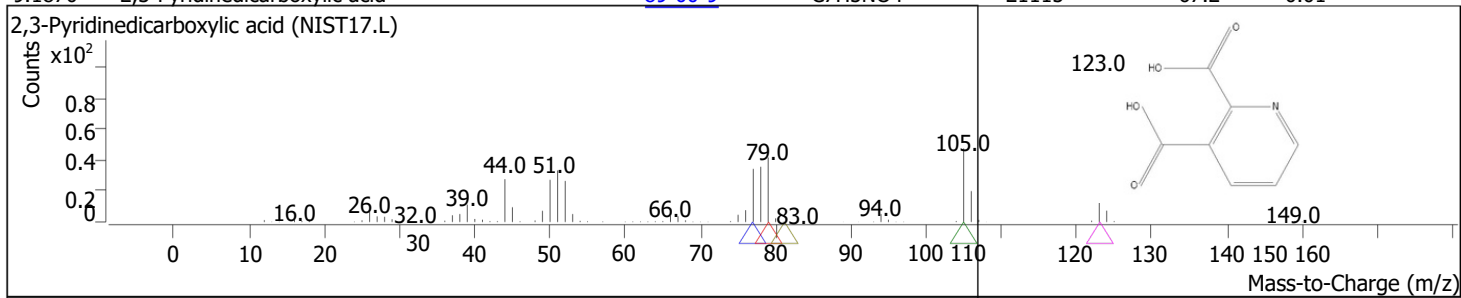
RT	Compound Name	CAS#	Formula	Area	Match Score	Sample	Sample
8.5748	4-Nonanone	<a href="#">4485-09-0</a>	C <sub>9</sub> H <sub>18</sub> O	1575215	96.4	0.95	2.26



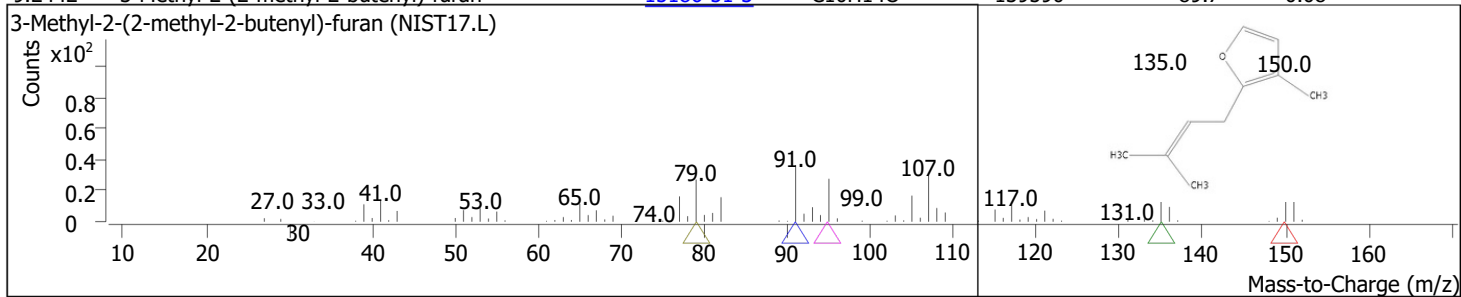
RT	Compound Name	CAS#	Formula	Area	Match Score	Sample	Sample
8.9810	Cyclohexene, 4-methyl-3-(1-methylethylidene)-	<a href="#">99805-90-0</a>	C <sub>10</sub> H <sub>16</sub>	110666	89.7	0.07	0.16



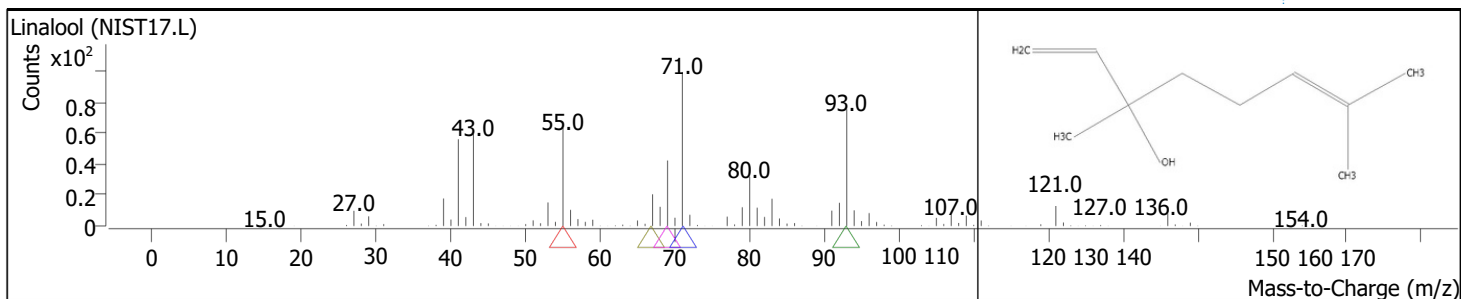
RT	Compound Name	CAS#	Formula	Area	Match Score	Sample	Sample
9.1870	2,3-Pyridinedicarboxylic acid	<a href="#">89-00-9</a>	C <sub>7</sub> H <sub>5</sub> NO <sub>4</sub>	21115	67.2	0.01	0.03



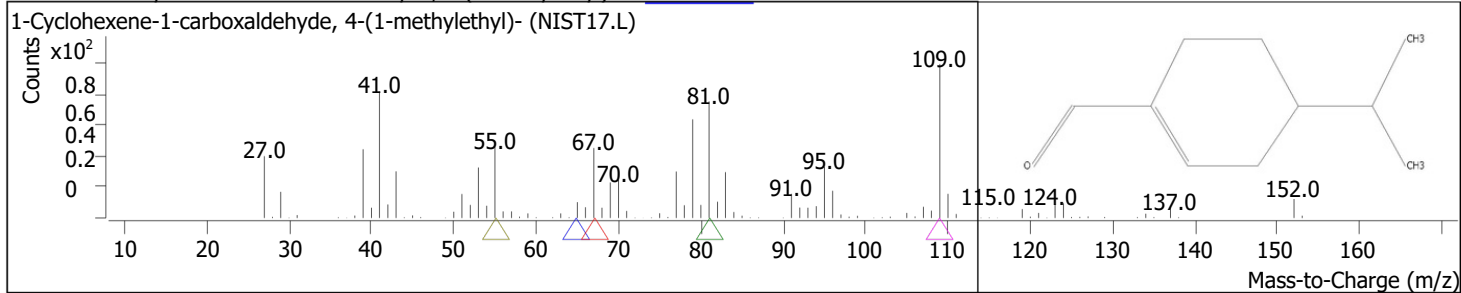
RT	Compound Name	CAS#	Formula	Area	Match Score	Sample	Sample
9.2442	3-Methyl-2-(2-methyl-2-butenyl)-furan	<a href="#">15186-51-3</a>	C <sub>10</sub> H <sub>14</sub> O	139590	89.7	0.08	0.20



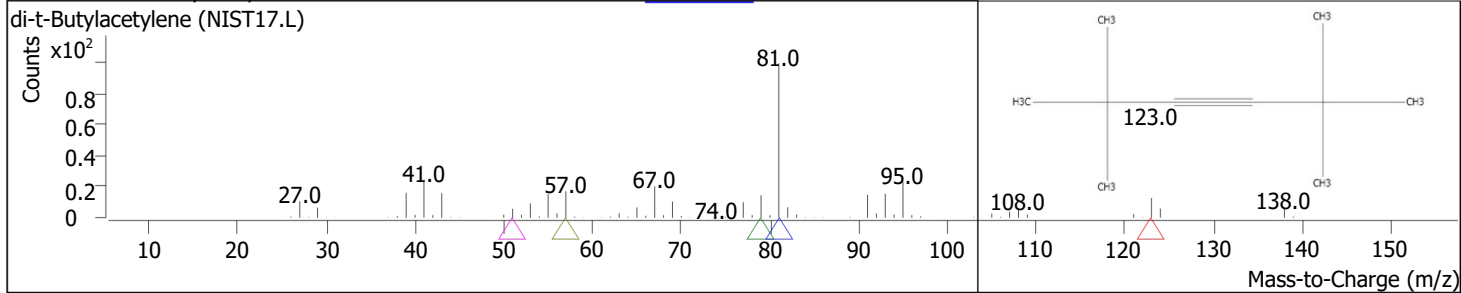
RT	Compound Name	CAS#	Formula	Area	Match Score	Sample	Sample
9.3186	Linalool	<a href="#">78-70-6</a>	C <sub>10</sub> H <sub>18</sub> O	976878	95.7	0.59	1.40



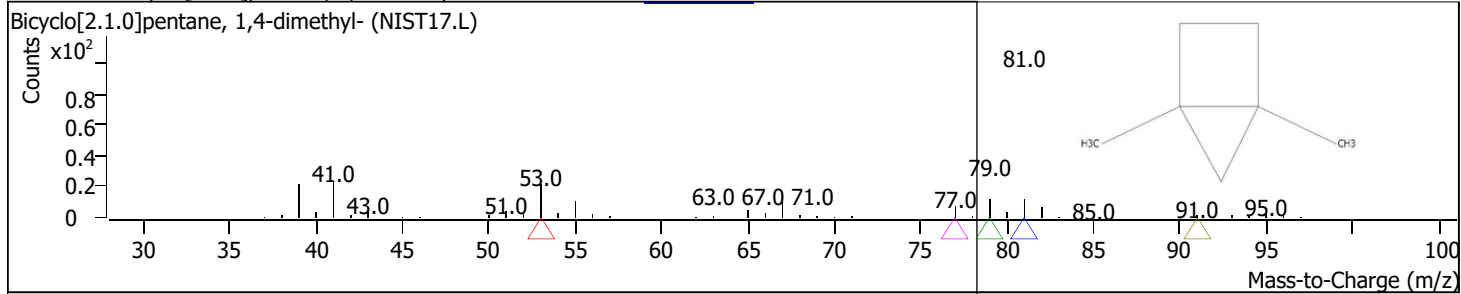
RT	Compound Name	CAS#	Formula	Area	Match Score	Sample	Sample
9.3758	1-Cyclohexene-1-carboxaldehyde, 4-(1-methylethyl)-	<a href="#">21391-98-0</a>	C10H16O	940903	75.8	0.57	1.35



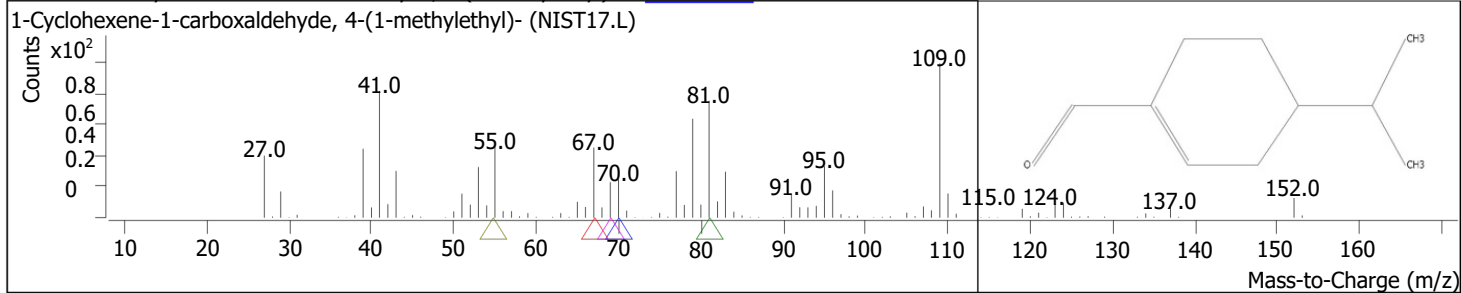
RT	Compound Name	CAS#	Formula	Area	Match Score	Sample	Sample
9.5818	di-t-Butylacetylene	<a href="#">17530-24-4</a>	C10H18	67607	74.2	0.04	0.10



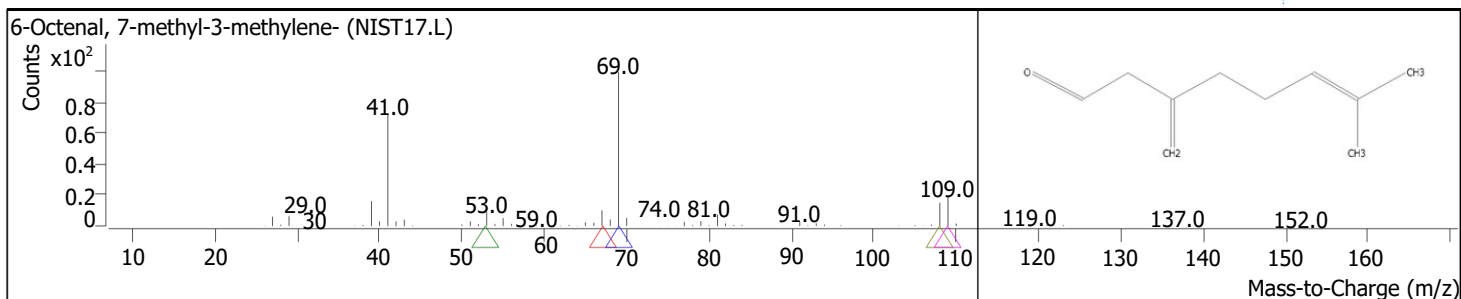
RT	Compound Name	CAS#	Formula	Area	Match Score	Sample	Sample
9.9252	Bicyclo[2.1.0]pentane, 1,4-dimethyl-	<a href="#">17065-18-8</a>	C7H12	72415	84.2	0.04	0.10



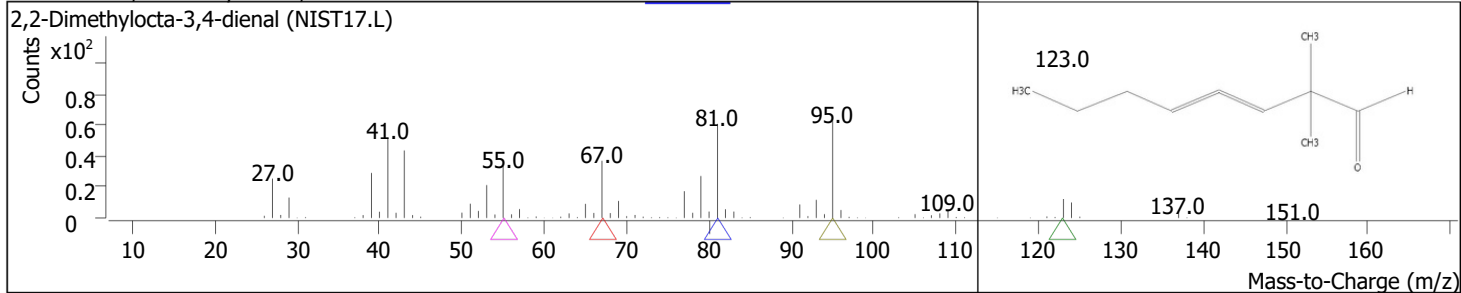
RT	Compound Name	CAS#	Formula	Area	Match Score	Sample	Sample
10.3543	1-Cyclohexene-1-carboxaldehyde, 4-(1-methylethyl)-	<a href="#">21391-98-0</a>	C10H16O	322661	82.5	0.20	0.46



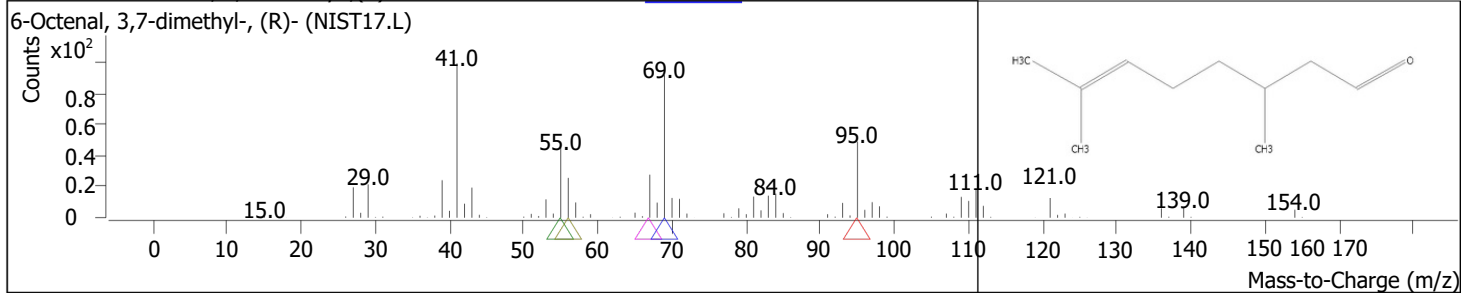
RT	Compound Name	CAS#	Formula	Area	Match Score	Sample	Sample
10.5431	6-Octenal, 7-methyl-3-methylene-	<a href="#">55050-40-3</a>	C10H16O	238781	93.6	0.14	0.34



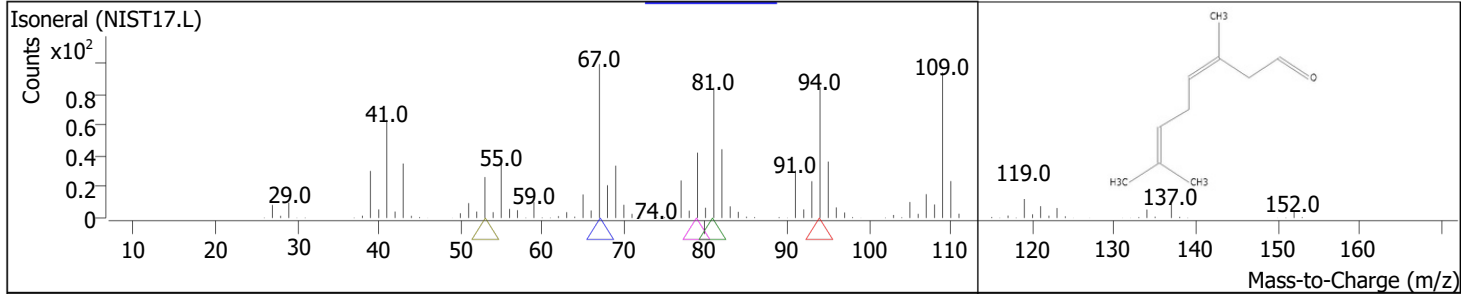
RT	Compound Name	CAS#	Formula	Area	Match Score	Sample	Sample
10.6519	2,2-Dimethylocta-3,4-dienal	<a href="#">590-71-6</a>	C10H16O	667349	93.5	0.40	0.96



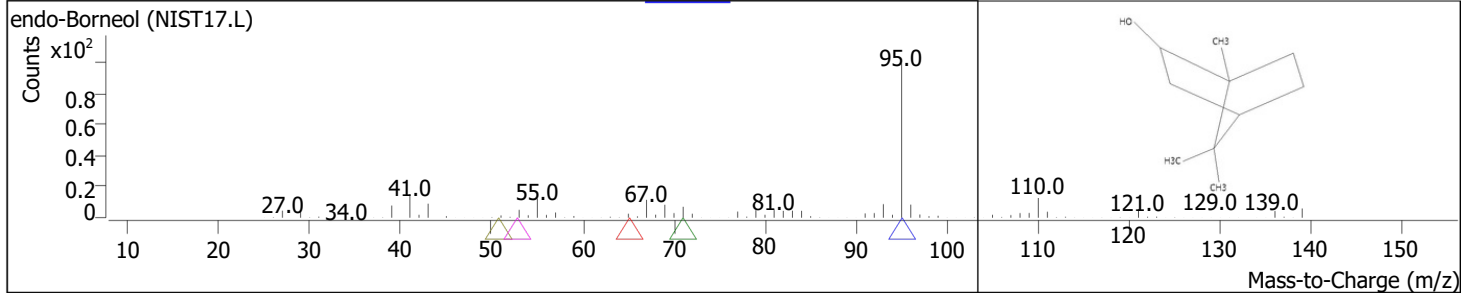
RT	Compound Name	CAS#	Formula	Area	Match Score	Sample	Sample
10.7663	6-Octenal, 3,7-dimethyl-, (R)-	<a href="#">2385-77-5</a>	C10H18O	240835	95.5	0.15	0.35



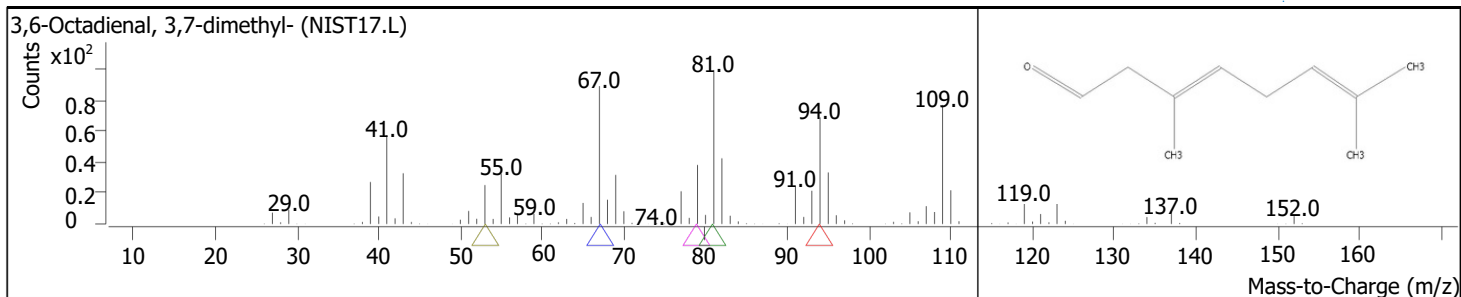
RT	Compound Name	CAS#	Formula	Area	Match Score	Sample	Sample
11.0925	Isoneral	<a href="#">1000414-18-0</a>	C10H16O	1783791	95.7	1.08	2.56



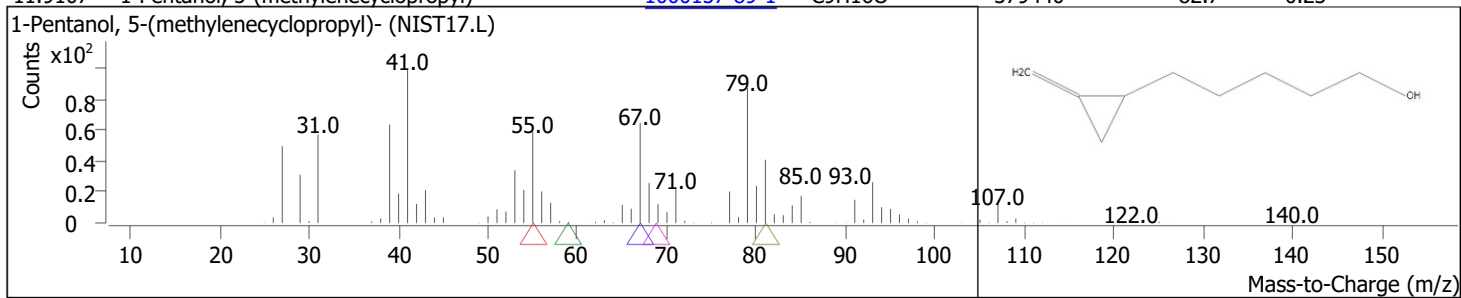
RT	Compound Name	CAS#	Formula	Area	Match Score	Sample	Sample
11.4072	endo-Borneol	<a href="#">507-70-0</a>	C10H18O	92923	75.5	0.06	0.13



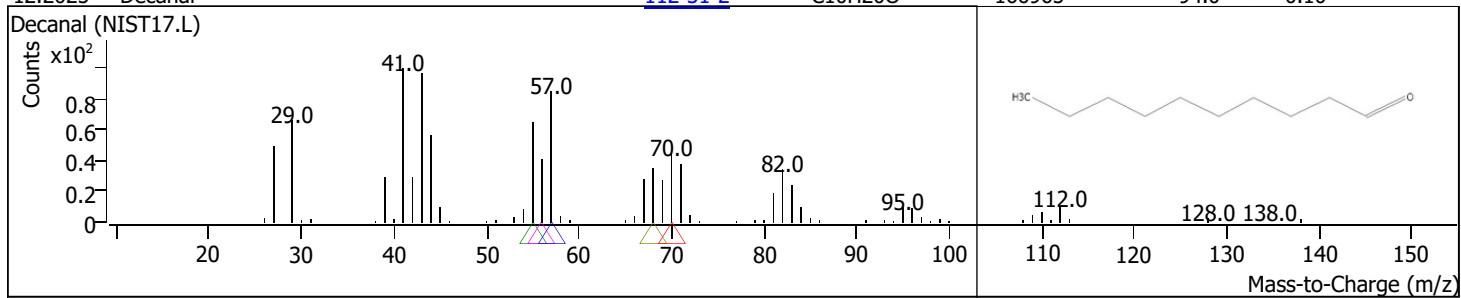
RT	Compound Name	CAS#	Formula	Area	Match Score	Sample	Sample
11.5903	3,6-Octadienal, 3,7-dimethyl-	<a href="#">55722-59-3</a>	C10H16O	3164451	96.3	1.92	4.55



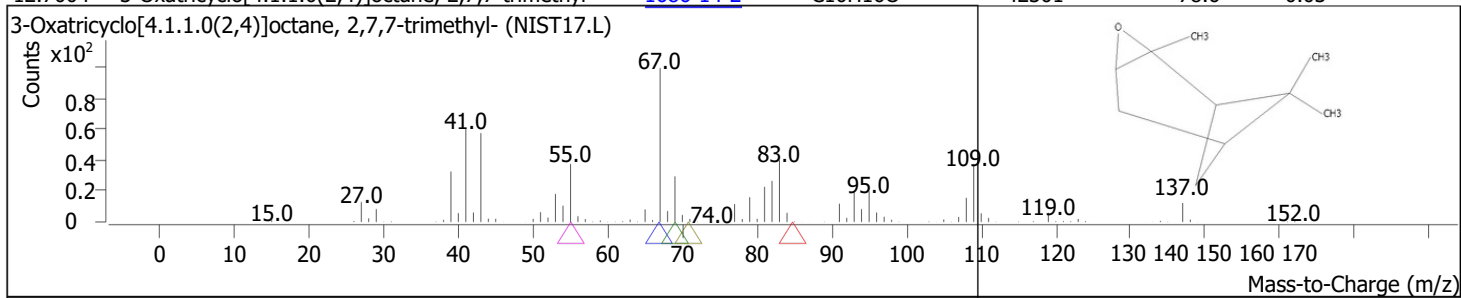
RT	Compound Name	CAS#	Formula	Area	Match Score	Sample	Sample
11.9107	1-Pentanol, 5-(methylenecyclopropyl)-	<a href="#">1000157-89-1</a>	C9H16O	379440	82.7	0.23	0.55



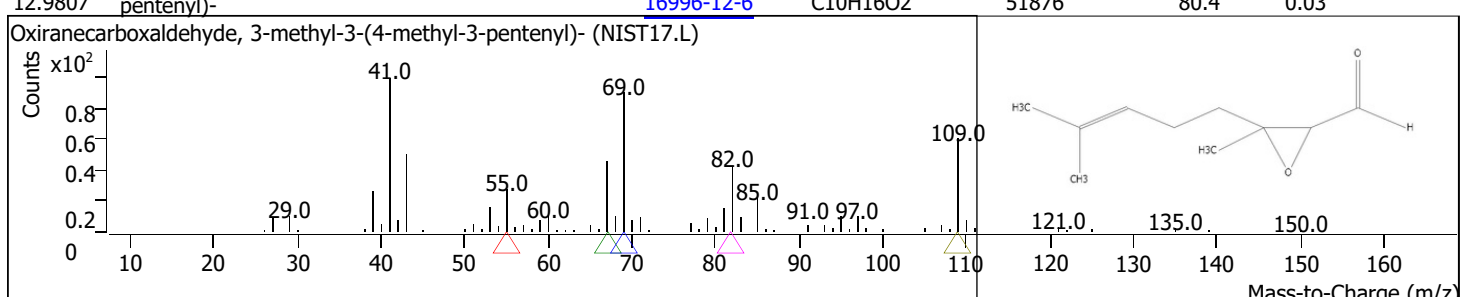
RT	Compound Name	CAS#	Formula	Area	Match Score	Sample	Sample
12.2025	Decanal	<a href="#">112-31-2</a>	C10H20O	166965	94.0	0.10	0.24



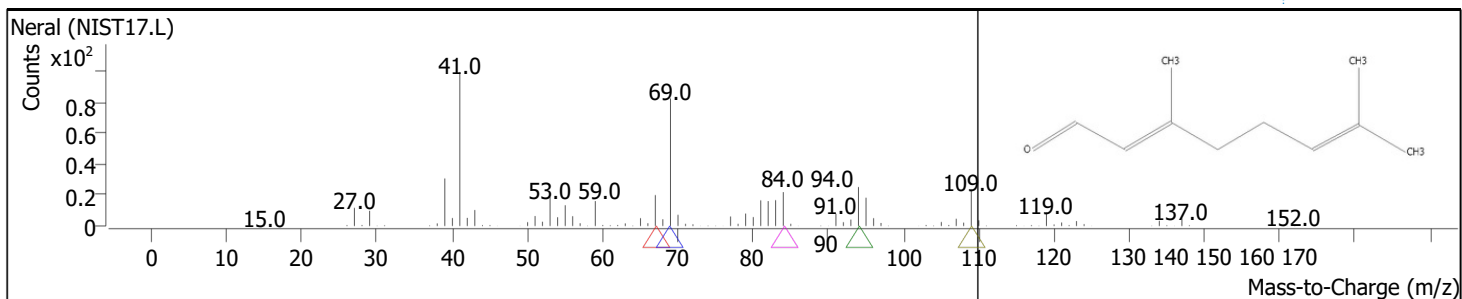
RT	Compound Name	CAS#	Formula	Area	Match Score	Sample	Sample
12.7004	3-Oxatricyclo[4.1.1.0(2,4)]octane, 2,7,7-trimethyl-	<a href="#">1686-14-2</a>	C10H16O	42301	78.6	0.03	0.06



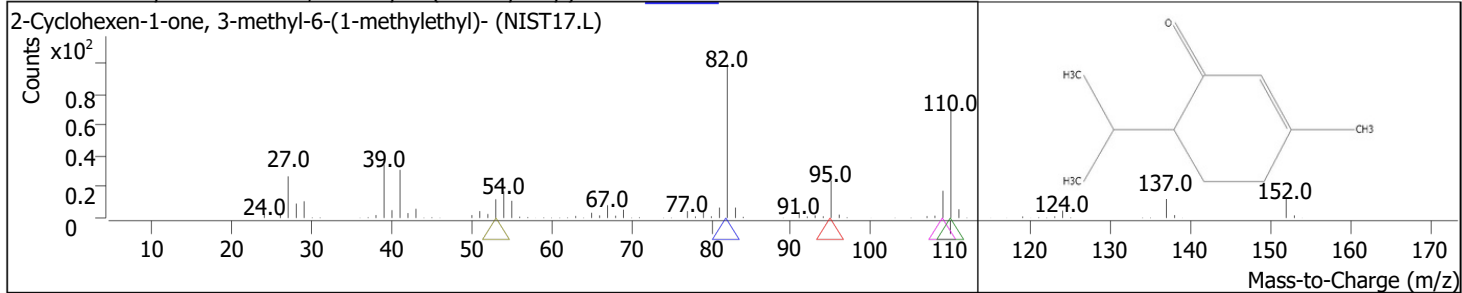
RT	Compound Name	CAS#	Formula	Area	Match Score	Sample	Sample
12.9807	Oxiranecarboxaldehyde, 3-methyl-3-(4-methyl-3-pentenyl)-	<a href="#">16996-12-6</a>	C10H16O2	51876	80.4	0.03	0.07



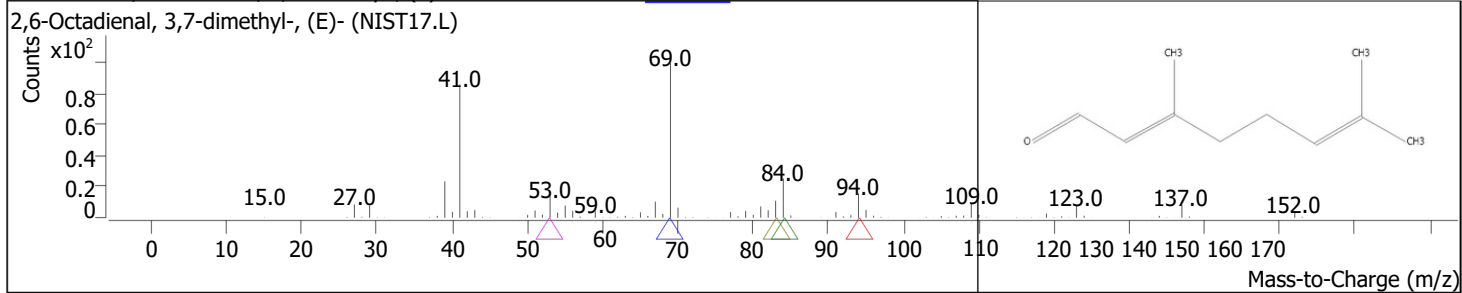
RT	Compound Name	CAS#	Formula	Area	Match Score	Sample	Sample
13.2668	Neral	<a href="#">106-26-3</a>	C10H16O	69580057	98.9	42.13	100.00



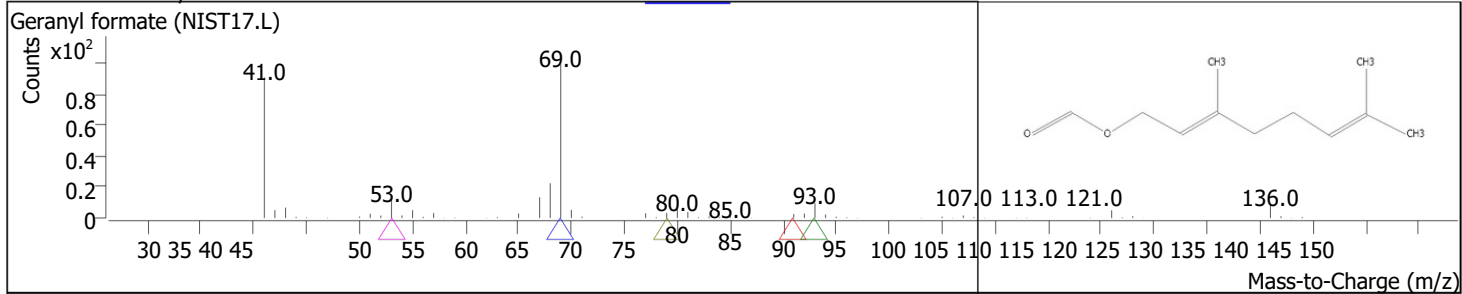
RT	Compound Name	CAS#	Formula	Area	Match Score	Sample	Sample
13.5301	2-Cyclohexen-1-one, 3-methyl-6-(1-methylethyl)-	<a href="#">89-81-6</a>	C10H16O	70556	86.9	0.04	0.10



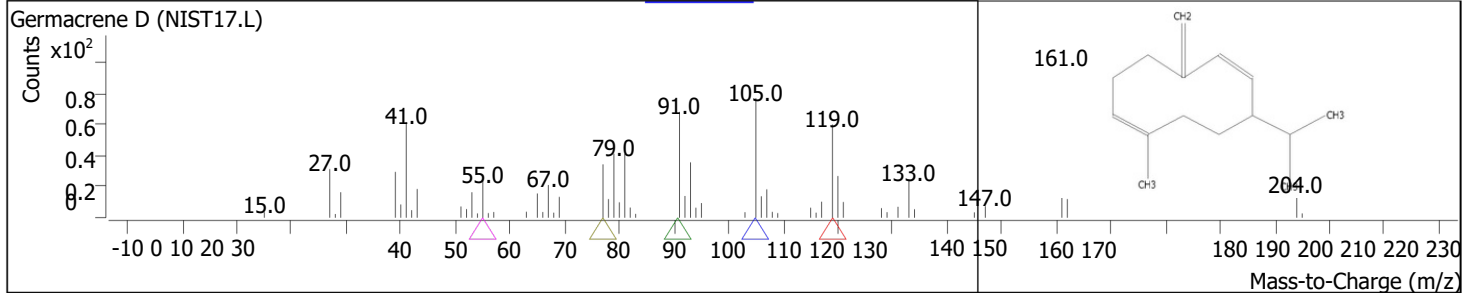
RT	Compound Name	CAS#	Formula	Area	Match Score	Sample	Sample
14.0851	2,6-Octadienal, 3,7-dimethyl-, (E)-	<a href="#">141-27-5</a>	C10H16O	68902156	98.9	41.72	99.03



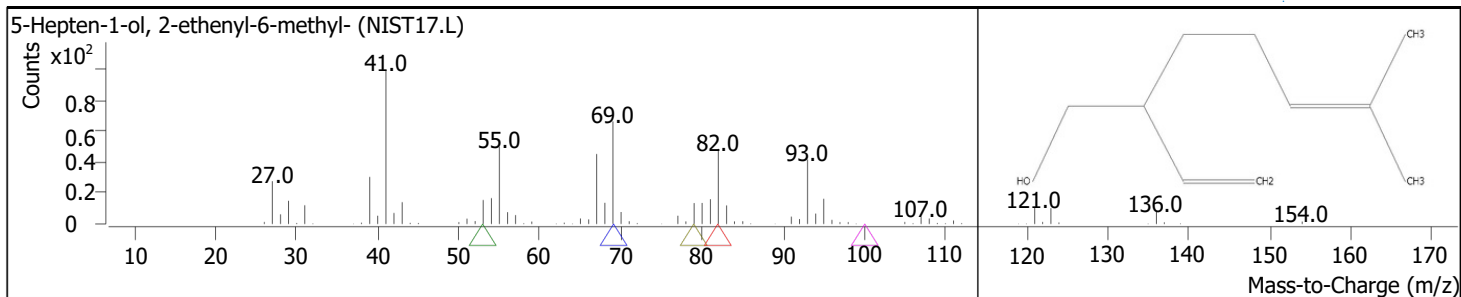
RT	Compound Name	CAS#	Formula	Area	Match Score	Sample	Sample
14.8290	Geranyl formate	<a href="#">105-86-2</a>	C11H18O2	43016	86.3	0.03	0.06



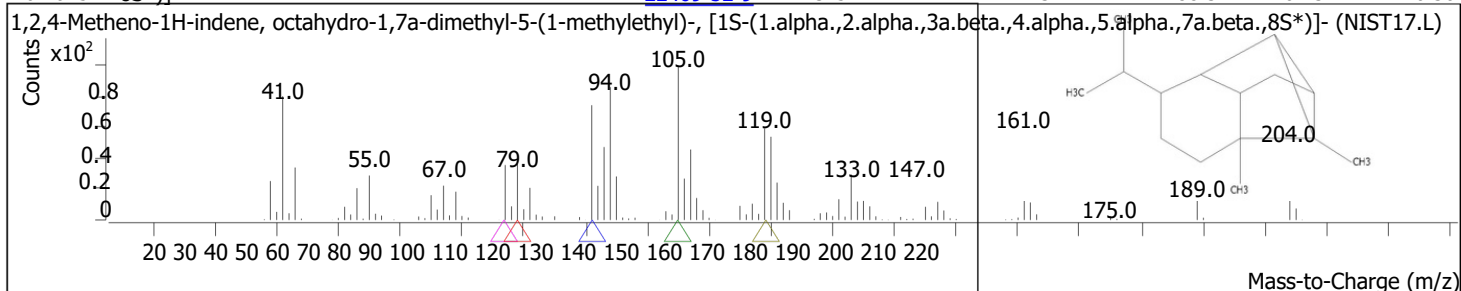
RT	Compound Name	CAS#	Formula	Area	Match Score	Sample	Sample
16.0249	Germacrene D	<a href="#">23986-74-5</a>	C15H24	104220	85.3	0.06	0.15



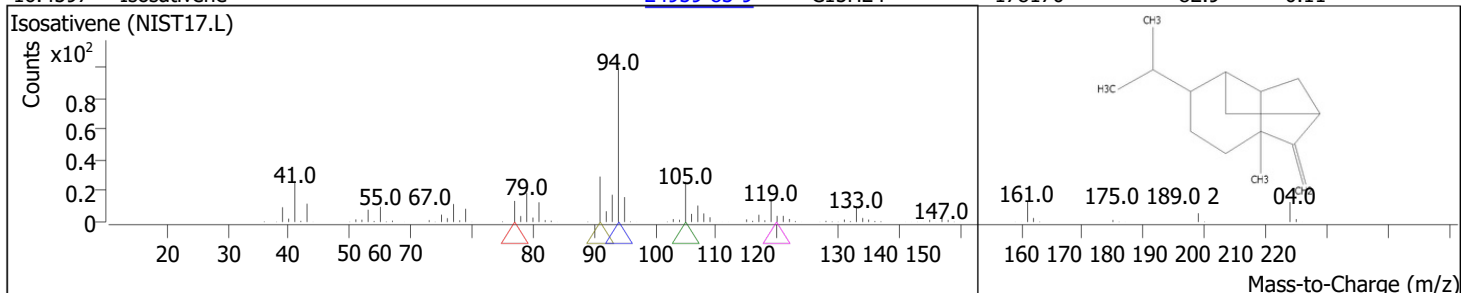
RT	Compound Name	CAS#	Formula	Area	Match Score	Sample	Sample
16.1794	5-Hepten-1-ol, 2-ethenyl-6-methyl-	<a href="#">18479-48-6</a>	C10H18O	138972	73.9	0.08	0.20



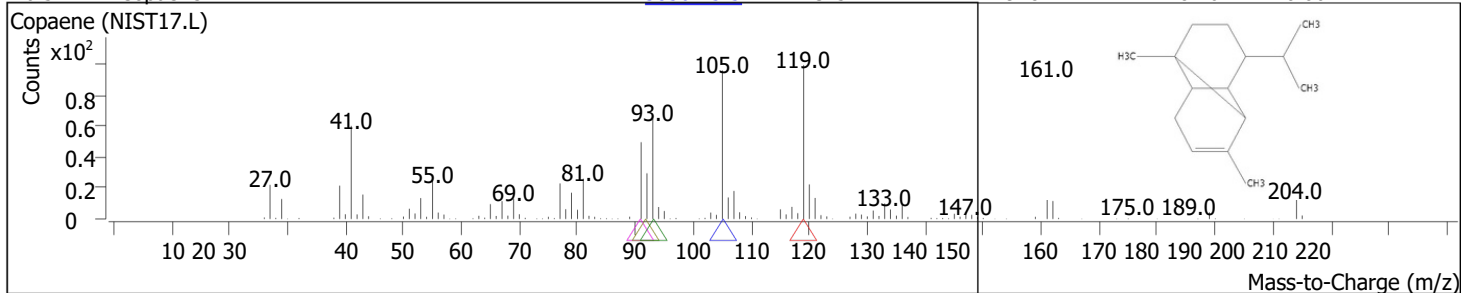
RT	Compound Name	CAS#	Formula	Area	Match Score	Sample
16.4025	1,2,4-Metheno-1H-indene, octahydro-1,7a-dimethyl-5-(1-methylethyl)-, [1S-(1.alpha.,2.alpha.,3a.beta.,4.alpha.,5.alpha.,7a.beta.,8S*)]-	<a href="#">22469-52-9</a>	C15H24	211131	88.3	0.13



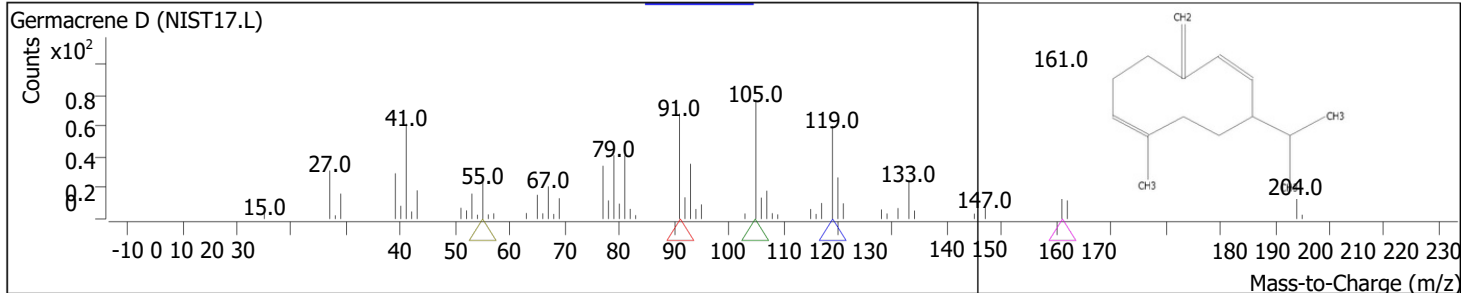
RT	Compound Name	CAS#	Formula	Area	Match Score	Sample
16.4597	Isosativene	<a href="#">24959-83-9</a>	C15H24	178170	82.9	0.11



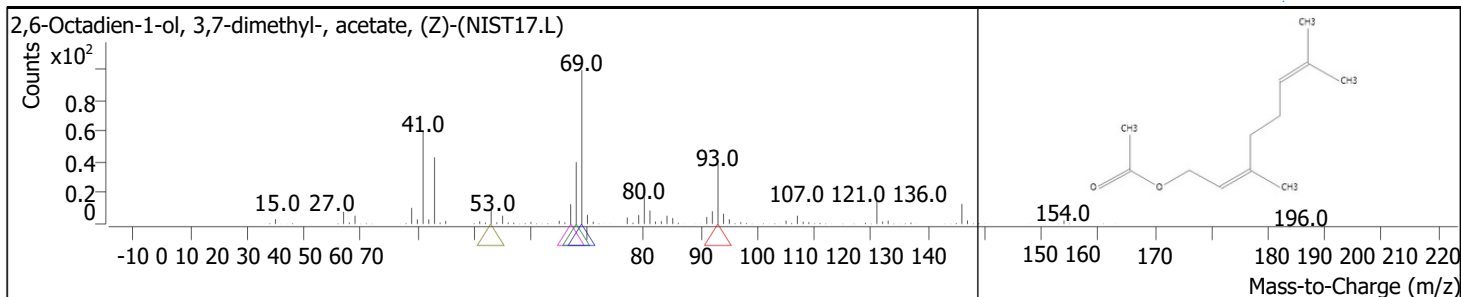
RT	Compound Name	CAS#	Formula	Area	Match Score	Sample
16.5742	Copaene	<a href="#">3856-25-5</a>	C15H24	92812	81.6	0.06



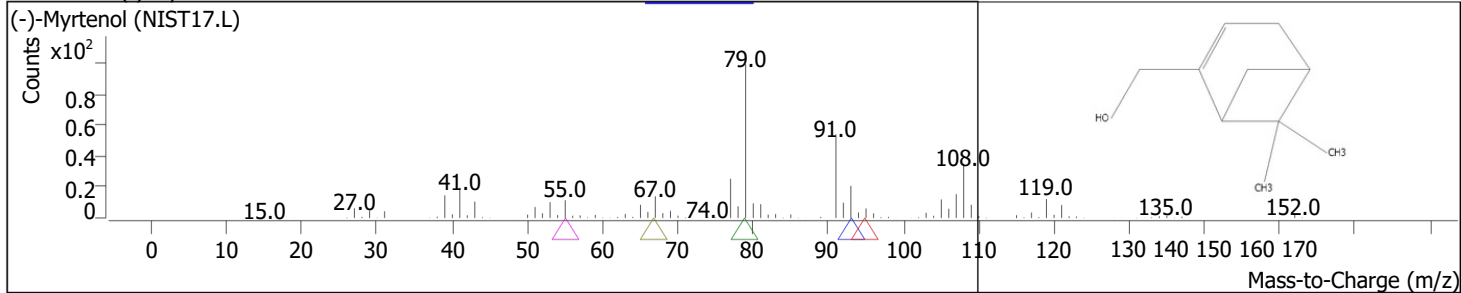
RT	Compound Name	CAS#	Formula	Area	Match Score	Sample
16.6943	Germacrene D	<a href="#">23986-74-5</a>	C15H24	54257	81.9	0.03



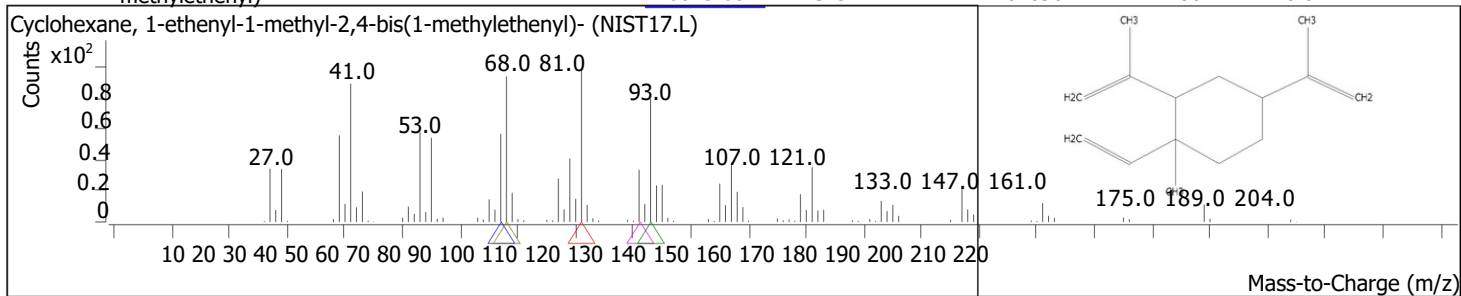
RT	Compound Name	CAS#	Formula	Area	Match Score	Sample
16.9289	2,6-Octadien-1-ol, 3,7-dimethyl-, acetate, (Z)-	<a href="#">141-12-8</a>	C12H20O2	1100539	94.5	0.67



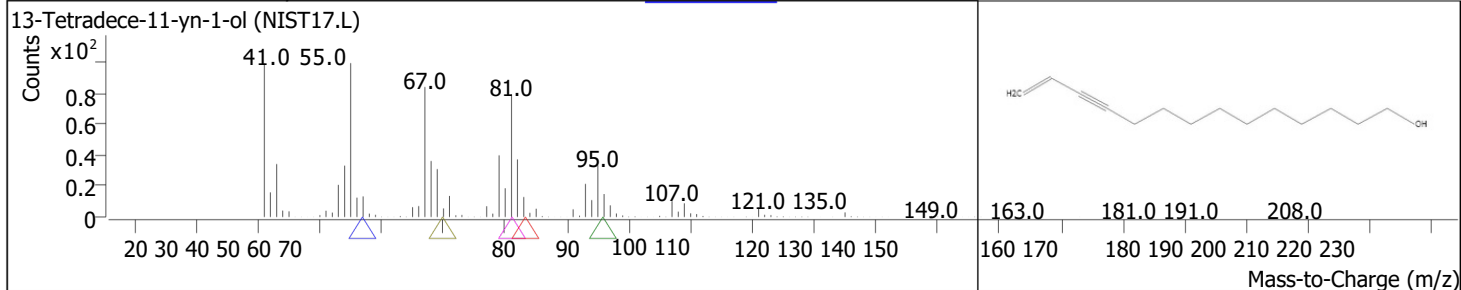
RT	Compound Name	CAS#	Formula	Area	Match Score	Sample	Sample
17.0319	(-)-Myrtenol	<a href="#">19894-97-4</a>	C10H16O	34706	68.0	0.02	0.05



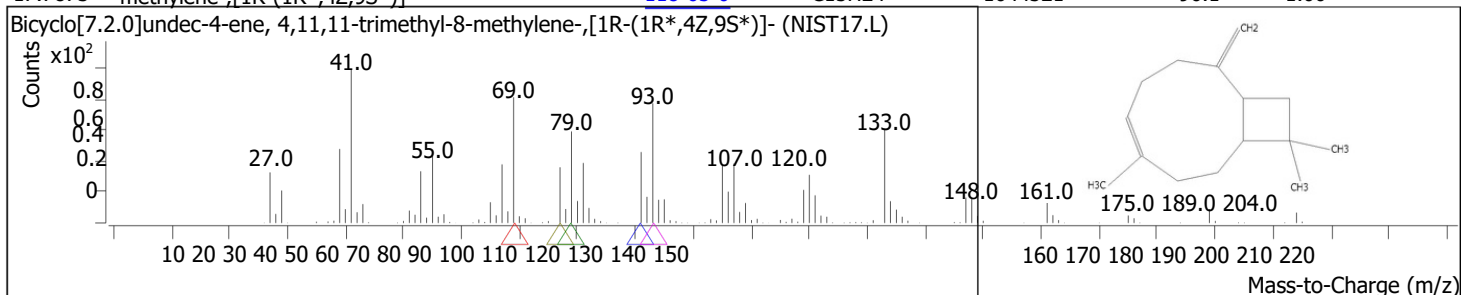
RT	Compound Name	CAS#	Formula	Area	Match Score	Sample	Sample
17.1121	Cyclohexane, 1-ethenyl-1-methyl-2,4-bis(1-methylethenyl)-	<a href="#">110823-68-2</a>	C15H24	67896	86.1	0.04	0.10



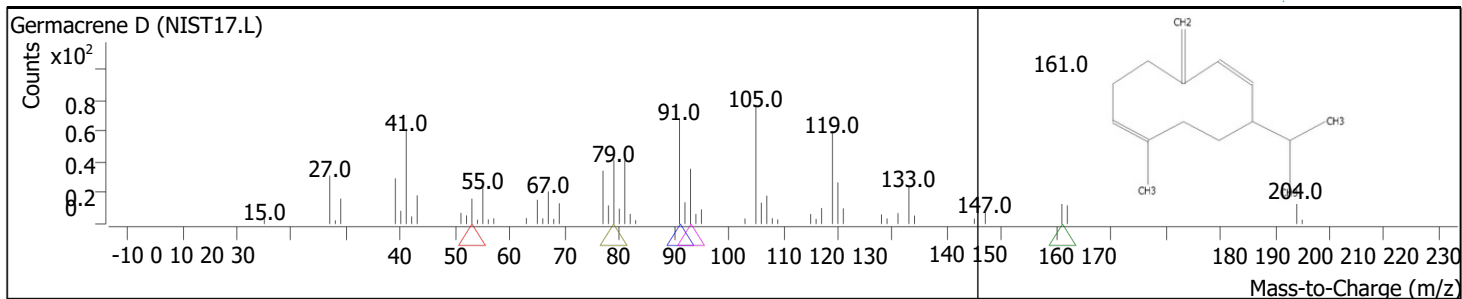
RT	Compound Name	CAS#	Formula	Area	Match Score	Sample	Sample
17.5355	13-Tetradece-11-yn-1-ol	<a href="#">1000131-00-4</a>	C14H24O	21296	70.0	0.01	0.03



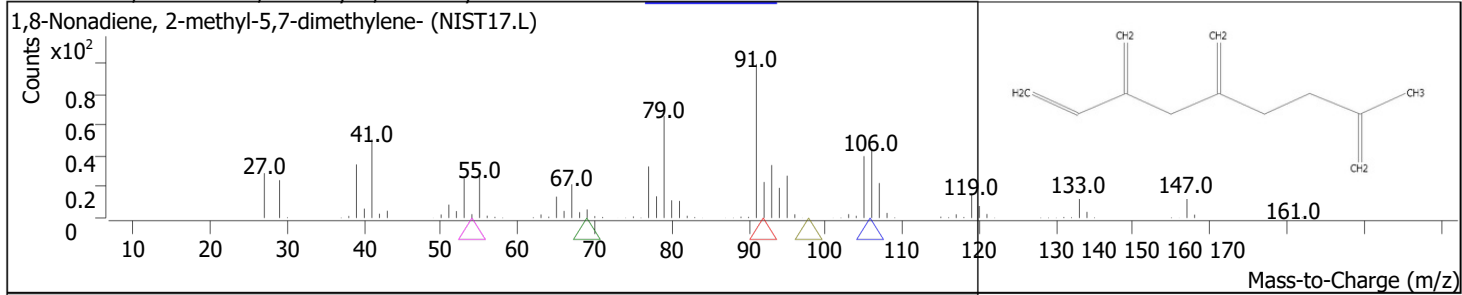
RT	Compound Name	CAS#	Formula	Area	Match Score	Sample	Sample
17.7873	Bicyclo[7.2.0]undec-4-ene, 4,11,11-trimethyl-8-methylene-, [1R-(1R*,4Z,9S*)]-	<a href="#">118-65-0</a>	C15H24	1644521	96.1	1.00	2.36



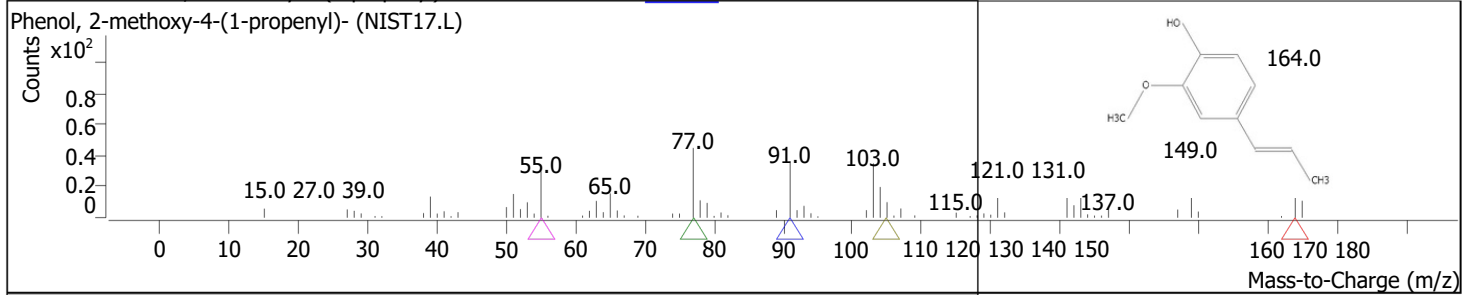
RT	Compound Name	CAS#	Formula	Area	Match Score	Sample	Sample
18.0161	Germacrene D	<a href="#">23986-74-5</a>	C15H24	22920	75.8	0.01	0.03



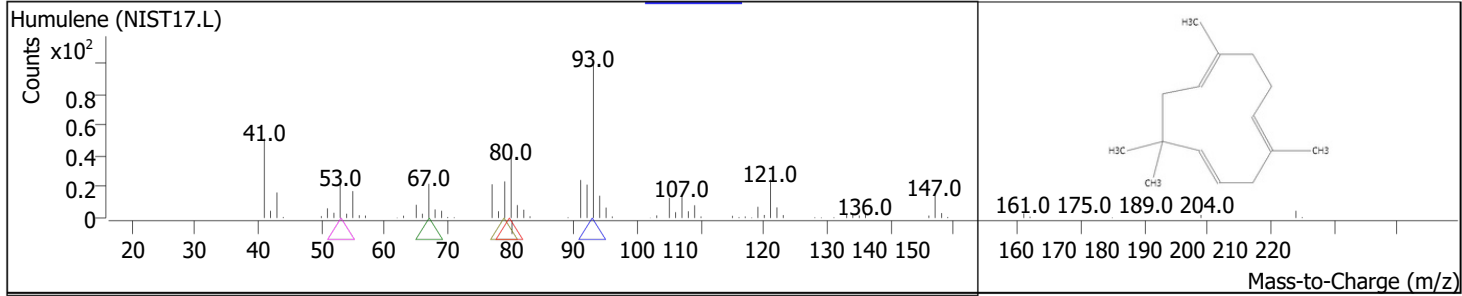
RT	Compound Name	CAS#	Formula	Area	Match Score	Sample	Sample
18.3823	1,8-Nonadiene, 2-methyl-5,7-dimethylene-	<a href="#">1000152-68-8</a>	C12H18	12716	68.3	0.01	0.02



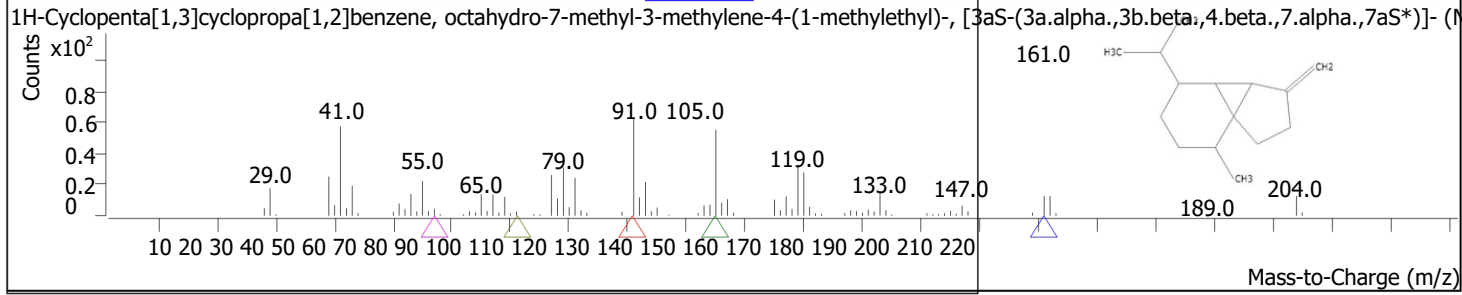
RT	Compound Name	CAS#	Formula	Area	Match Score	Sample	Sample
18.5540	Phenol, 2-methoxy-4-(1-propenyl)-	<a href="#">97-54-1</a>	C10H12O2	163192	80.4	0.10	0.23



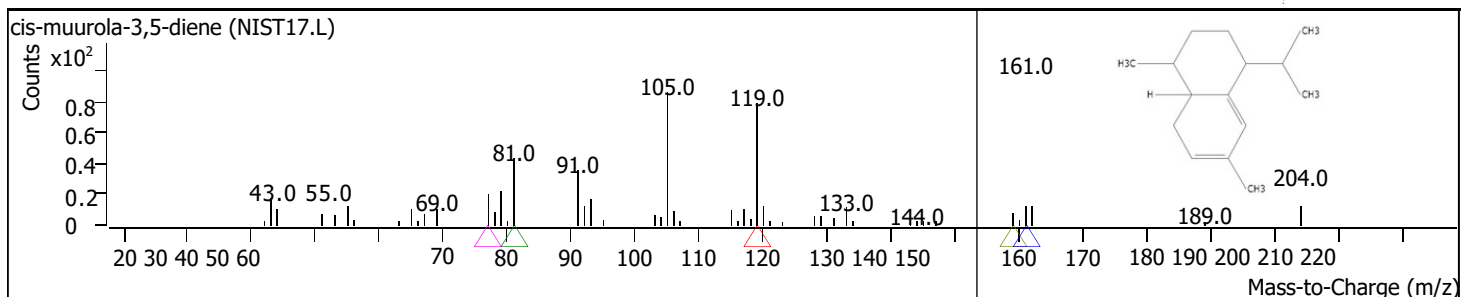
RT	Compound Name	CAS#	Formula	Area	Match Score	Sample	Sample
18.6284	Humulene	<a href="#">6753-98-6</a>	C15H24	219153	87.4	0.13	0.31



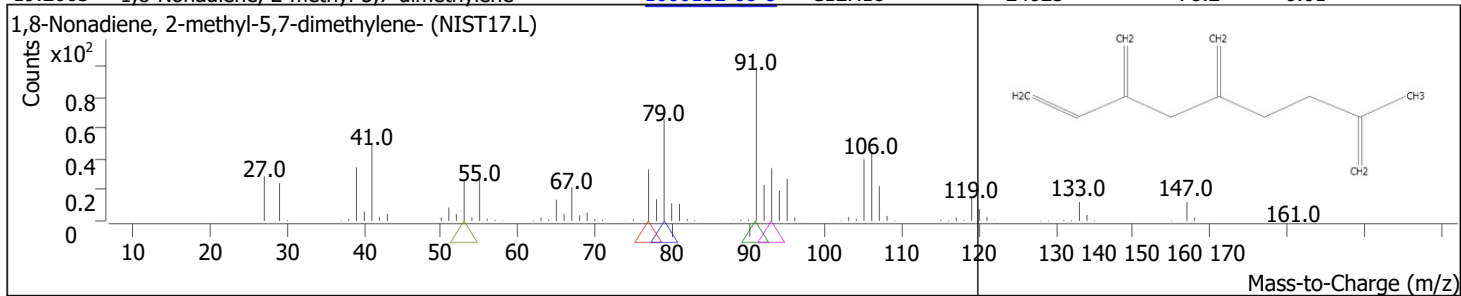
RT	Compound Name	CAS#	Formula	Area	Match Score	Sample	Sample
18.8516	1H-Cyclopenta[1,3]cyclopropa[1,2]benzene, octahydro-7-methyl-3-methylene-4-(1-methylethyl)-, [3aS-(3a.alpha.,3b.beta.,4.beta.,7.alpha.,7aS*)]-	<a href="#">13744-15-5</a>	C15H24	39163	72.1	0.02	0.06



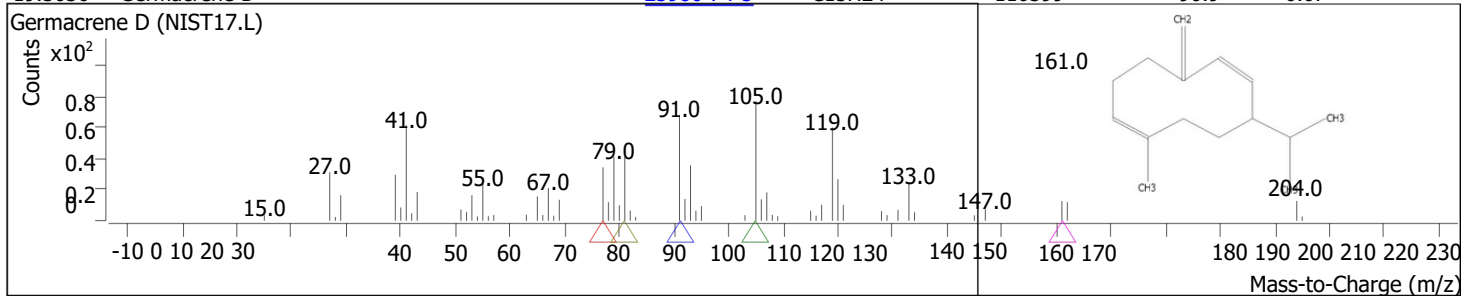
RT	Compound Name	CAS#	Formula	Area	Match Score	Sample	Sample
19.1319	cis-muurola-3,5-diene	<a href="#">1000365-95-4</a>	C15H24	83797	84.7	0.05	0.12



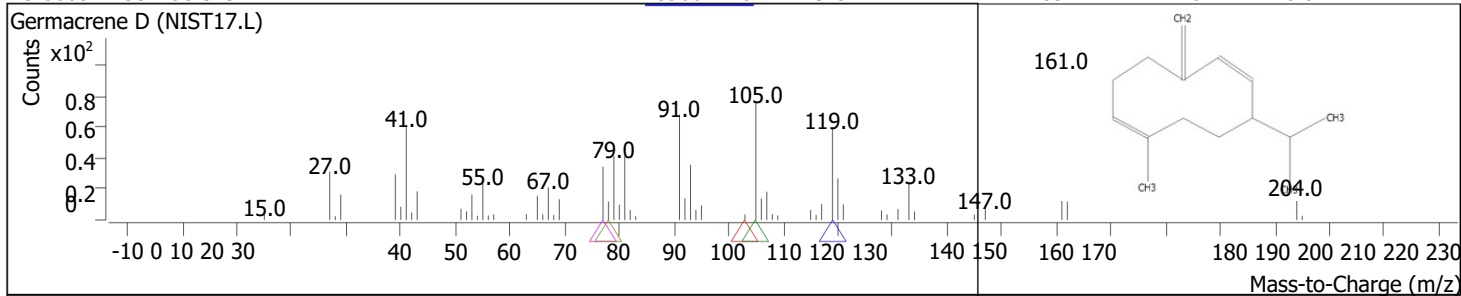
RT	Compound Name	CAS#	Formula	Area	Match Score	Sample	Sample
19.2063	1,8-Nonadiene, 2-methyl-5,7-dimethylene-	<a href="#">1000152-68-8</a>	C12H18	24025	78.2	0.01	0.03



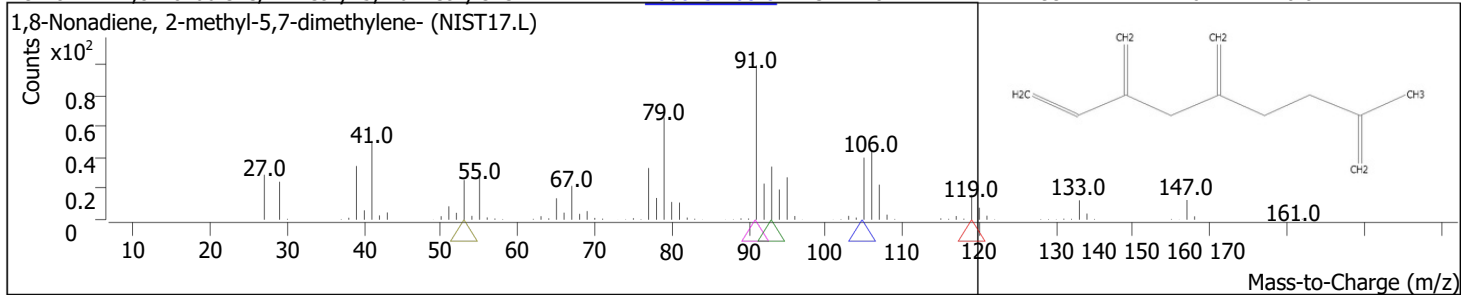
RT	Compound Name	CAS#	Formula	Area	Match Score	Sample	Sample
19.3036	Germacrene D	<a href="#">23986-74-5</a>	C15H24	110599	90.9	0.07	0.16



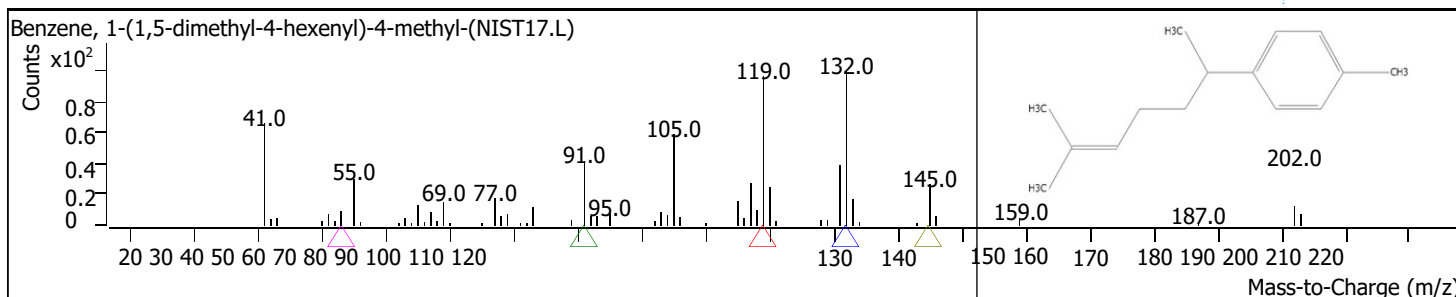
RT	Compound Name	CAS#	Formula	Area	Match Score	Sample	Sample
19.5668	Germacrene D	<a href="#">23986-74-5</a>	C15H24	24765	76.4	0.01	0.04



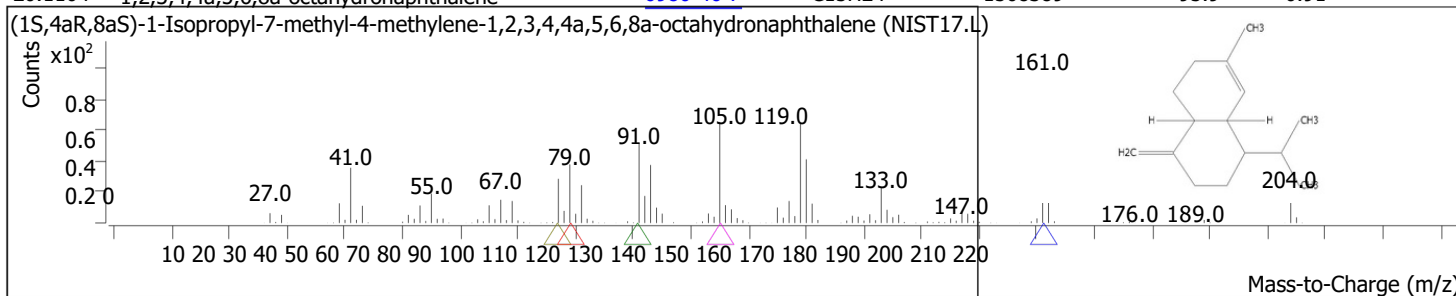
RT	Compound Name	CAS#	Formula	Area	Match Score	Sample	Sample
19.7842	1,8-Nonadiene, 2-methyl-5,7-dimethylene-	<a href="#">1000152-68-8</a>	C12H18	71199	76.2	0.04	0.10



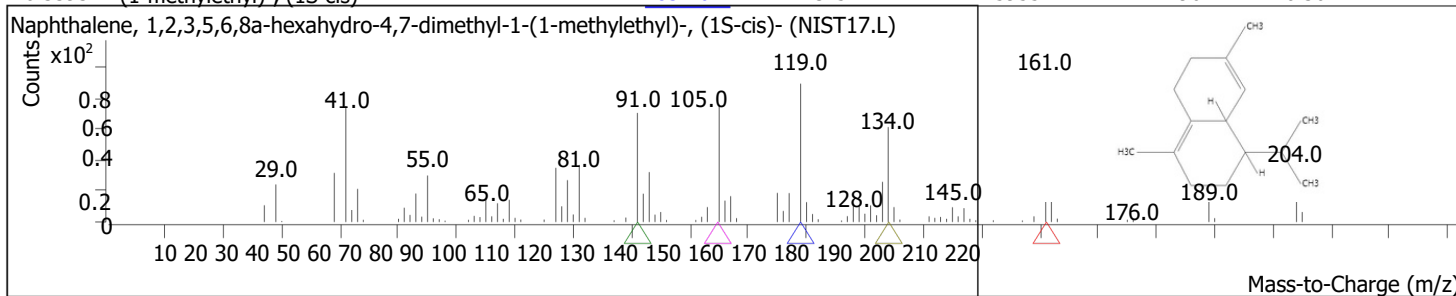
RT	Compound Name	CAS#	Formula	Area	Match Score	Sample	Sample
19.8987	Benzene, 1-(1,5-dimethyl-4-hexenyl)-4-methyl-	<a href="#">644-30-4</a>	C15H22	26664	72.9	0.02	0.04



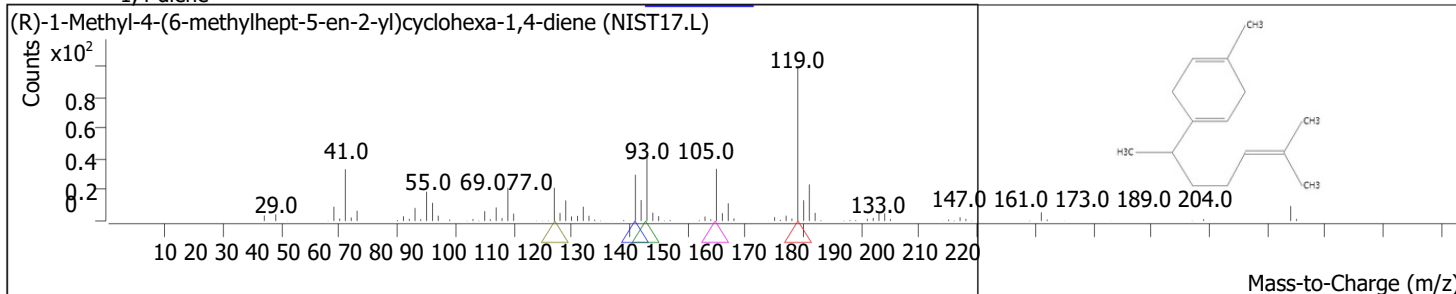
RT	Compound Name	CAS#	Formula	Area	Match Score	Sample	Sample
20.1104	(1S,4aR,8aS)-1-Isopropyl-7-methyl-4-methylene-1,2,3,4,4a,5,6,8a-octahydronaphthalene	<a href="#">6980-46-7</a>	C15H24	1508389	95.9	0.91	2.17



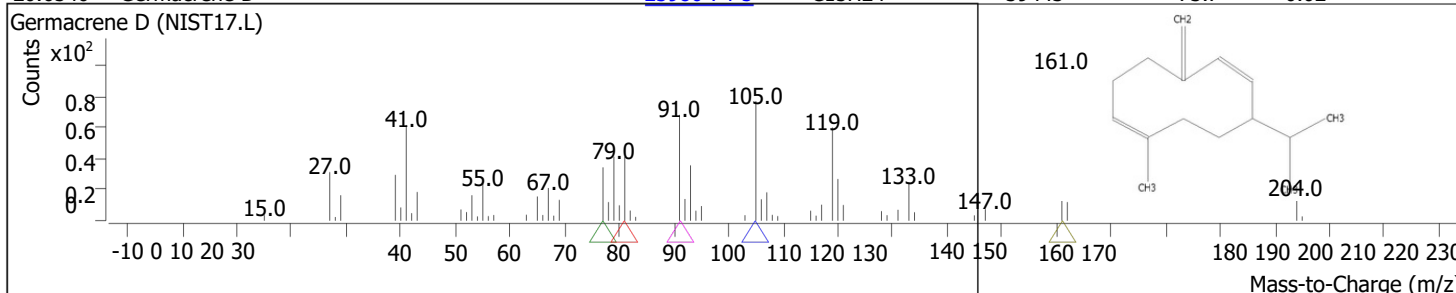
RT	Compound Name	CAS#	Formula	Area	Match Score	Sample	Sample
20.3393	Naphthalene, 1,2,3,5,6,8a-hexahydro-4,7-dimethyl-1-(1-methylethyl)-, (1S-cis)-	<a href="#">483-76-1</a>	C15H24	595544	96.4	0.36	0.86



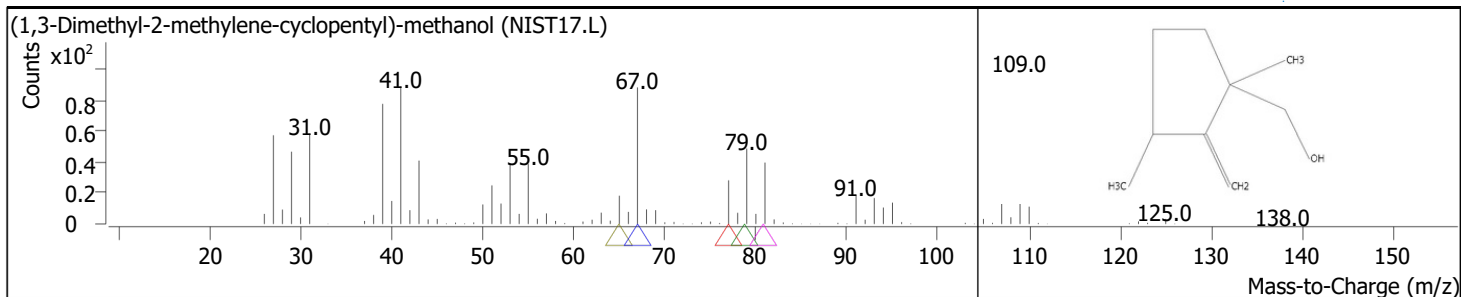
RT	Compound Name	CAS#	Formula	Area	Match Score	Sample	Sample
20.5338	(R)-1-Methyl-4-(6-methylhept-5-en-2-yl)cyclohexa-1,4-diene	<a href="#">28976-67-2</a>	C15H24	188718	89.2	0.11	0.27



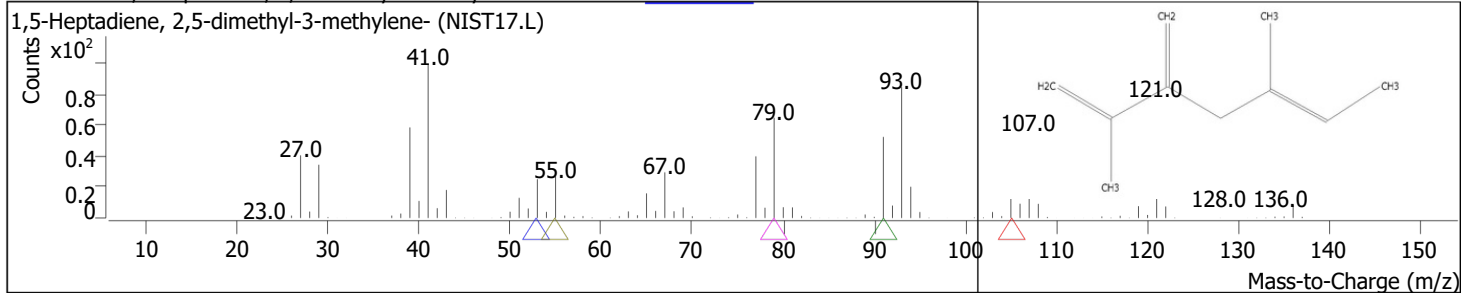
RT	Compound Name	CAS#	Formula	Area	Match Score	Sample	Sample
20.6540	Germacrene D	<a href="#">23986-74-5</a>	C15H24	39443	73.7	0.02	0.06



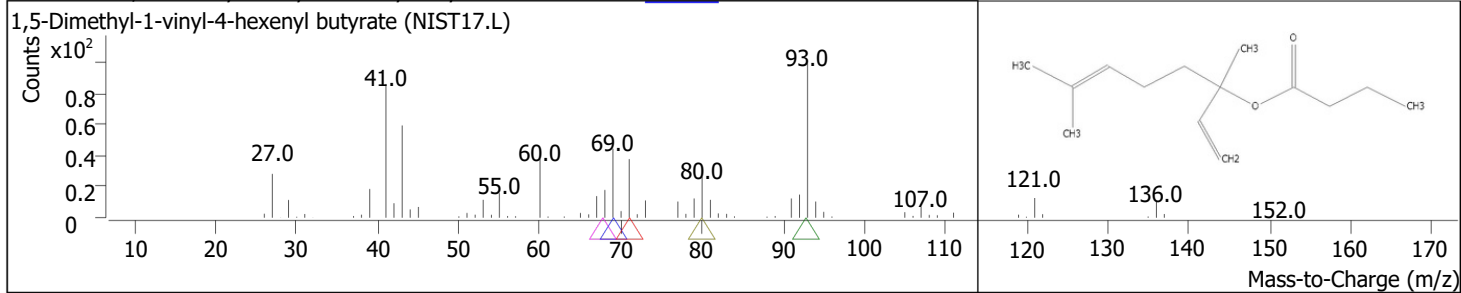
RT	Compound Name	CAS#	Formula	Area	Match Score	Sample	Sample
20.9973	(1,3-Dimethyl-2-methylene-cyclopentyl)-methanol	<a href="#">1000190-16-2</a>	C9H16O	13767	71.0	0.01	0.02



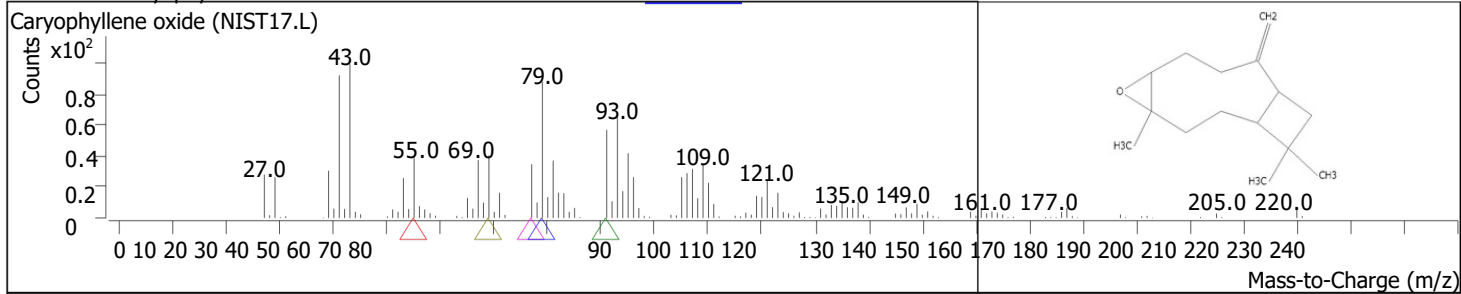
RT	Compound Name	CAS#	Formula	Area	Match Score	Sample	Sample
21.1003	1,5-Heptadiene, 2,5-dimethyl-3-methylene-	<a href="#">74663-83-5</a>	C10H16	18169	70.3	0.01	0.03



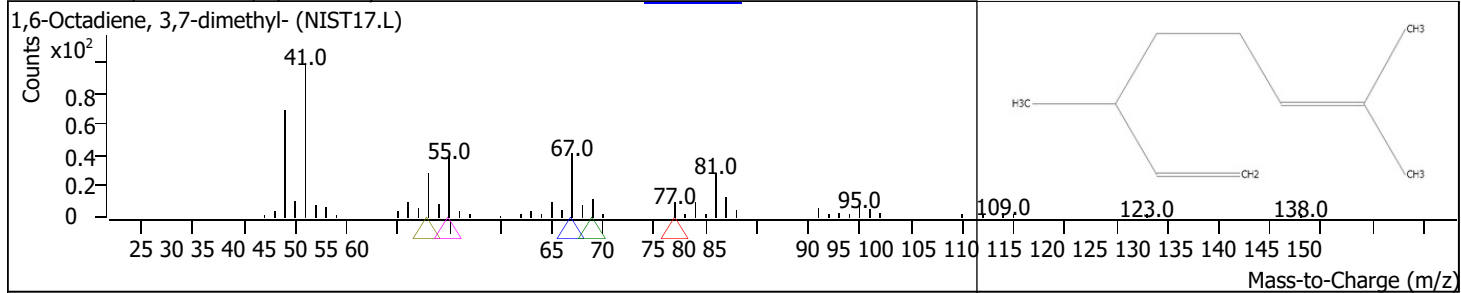
RT	Compound Name	CAS#	Formula	Area	Match Score	Sample	Sample
21.2205	1,5-Dimethyl-1-vinyl-4-hexenyl butyrate	<a href="#">78-36-4</a>	C14H24O2	43782	84.2	0.03	0.06



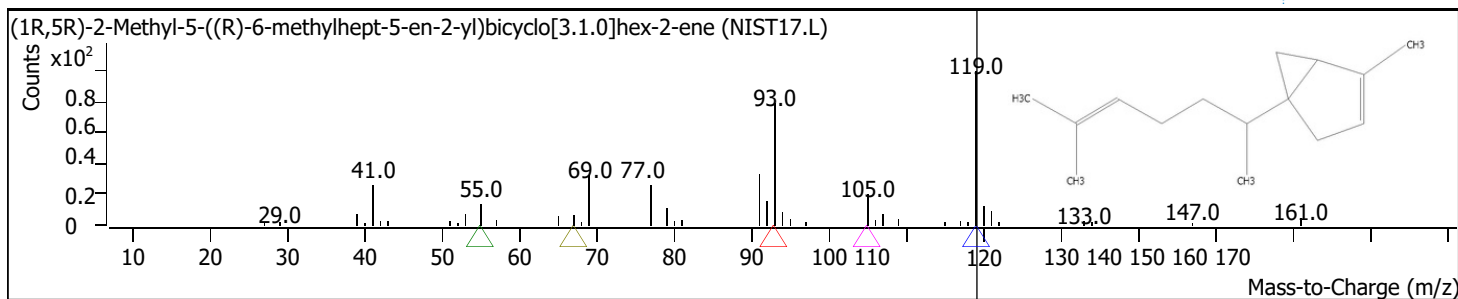
RT	Compound Name	CAS#	Formula	Area	Match Score	Sample	Sample
21.7583	Caryophyllene oxide	<a href="#">1139-30-6</a>	C15H24O	433328	88.6	0.26	0.62



RT	Compound Name	CAS#	Formula	Area	Match Score	Sample	Sample
22.4450	1,6-Octadiene, 3,7-dimethyl-	<a href="#">2436-90-0</a>	C10H18	32928	79.8	0.02	0.05



RT	Compound Name	CAS#	Formula	Area	Match Score	Sample	Sample
22.9829	(1R,5R)-2-Methyl-5-((R)-6-methylhept-5-en-2-yl)bicyclo[3.1.0]hex-2-ene	<a href="#">58319-06-5</a>	C15H24	25871	67.1	0.02	0.04



RT	Compound Name	CAS#	Formula	Area	Match Score	Sample	Sample
23.3720	.alpha.-Bourbonene	<a href="#">1000293-01-9</a>	C15H24	18445	61.5	0.01	0.03

