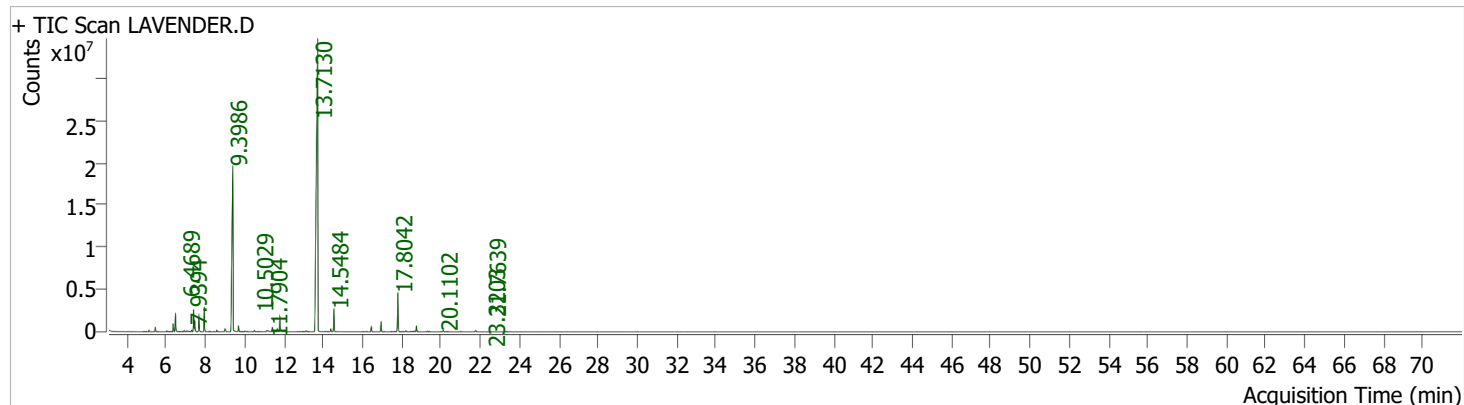


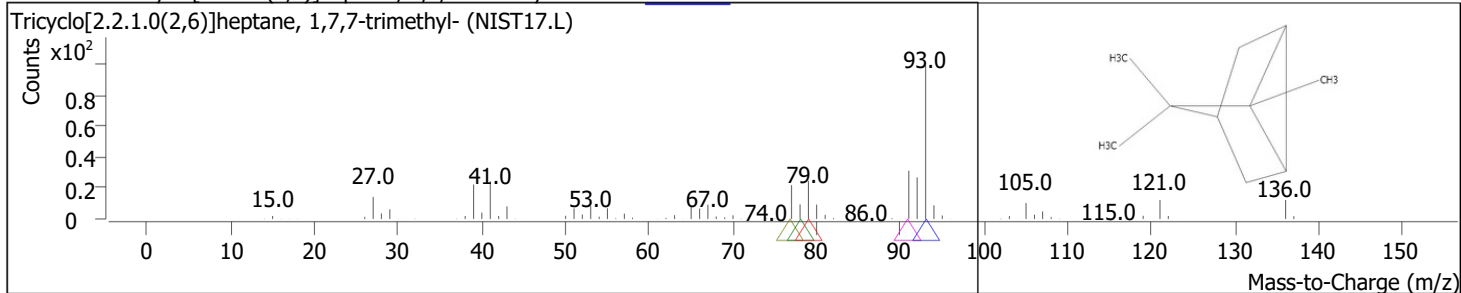
Batch Path D:\MassHunter\Data\External\New folder  
 Analysis File Name NEW.uaf  
 Analyst Name Basab-GCMS  
 Analysis Time 09-03-2026 20:34:22  
 Data File Name LAVENDER.D Data Path Name D:\MassHunter\Data\External\New folder  
 Sample Name Acq LAV-DD-2510 / PEPPERWOODD Sample Type Sample  
 Method File Acq Bio Oil pyrolysis4\_new.m Acq Method Path D:\MassHunter\GCMS\methods  
 Time Instrument 09-03-2026 18:51:28 Operator  
 Name GCMS Dilution 1



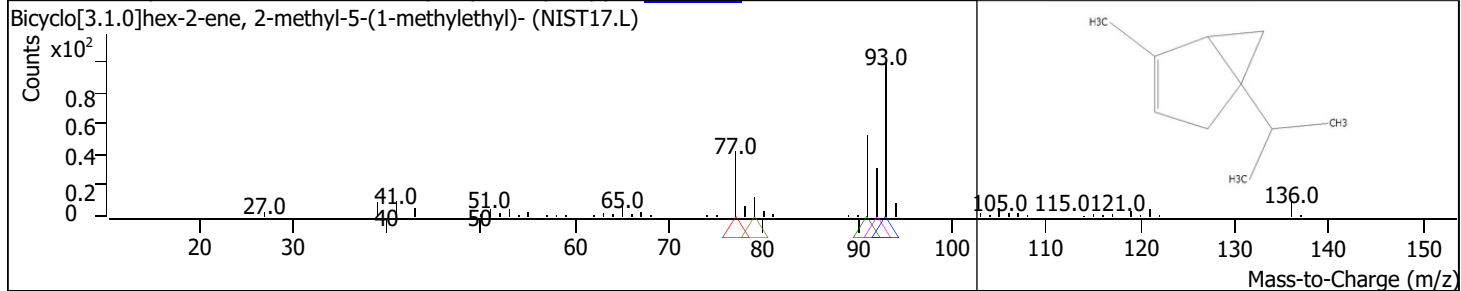
RT	Compound Name	CAS#	Formula	Area	Match Score	Sample	Sample
4.8667	Tricyclo[2.2.1.0(2,6)]heptane, 1,7,7-trimethyl-	508-32-7 2867-	C10H16	83625	87.2	0.03	0.05
4.9811	Bicyclo[3.1.0]hex-2-ene, 2-methyl-5-(1-methylethyl)-	05-2 80-	C10H16	111939	89.9	0.03	0.06
5.1242	.alpha.-Pinene	56-8 79-	C10H16	355024	96.6	0.11	0.20
5.4446	Camphene	92-5	C10H16	988656	98.0	0.31	0.57
5.5991	1,5-Decadiyne	53963-03-4	C10H14	26357	63.7	0.01	0.02
6.0340	Bicyclo[3.1.0]hexane, 4-methylene-1-(1-methylethyl)-	3387-41-5	C10H16	216350	95.7	0.07	0.12
6.1027	.beta.-Pinene	127-91-3	C10H16	100417	93.4	0.03	0.06
6.2057	1-Octen-3-ol	3391-86-4	C8H16O	152344	77.2	0.05	0.09
6.3544	3-Heptanone, 5-methyl-	541-85-5	C8H16O	1761115	94.8	0.55	1.01
6.4689	.beta.-Myrcene	123-35-3	C10H16	5144580	96.3	1.59	2.96
6.6119	3-Heptanol, 6-methyl-	18720-66-6	C8H18O	196293	74.7	0.06	0.11
6.7893	.alpha.-Phellandrene	99-83-2	C10H16	204297	89.7	0.06	0.12
6.9209	1,3,6-Octatriene, 3,7-dimethyl-, (Z)-	3338-55-4	C10H16	382116	94.3	0.12	0.22
7.0525	Acetic acid, hexyl ester	142-92-7	C8H16O2	198520	91.2	0.06	0.11
7.0983	Cyclohexene, 1-methyl-4-(1-methylethylidene)-	586-62-9	C10H16	254876	92.4	0.08	0.15
7.1727	Silane, chloroethylmethyl-	6374-21-6	C3H9ClSi	57335	64.0	0.02	0.03
7.2414	o-Cymene	527-84-4	C10H14	127906	91.7	0.04	0.07
7.2986	p-Cymene	99-87-6	C10H14	413881	96.1	0.13	0.24
7.4016	Limonene	138-86-3	C10H16	5627824	96.4	1.74	3.24
7.4588	Eucalyptol	470-82-6	C10H18O	2701312	93.5	0.84	1.56
7.6705	trans-.beta.-Ocimene	3779-61-1	C10H16	4247635	98.7	1.32	2.45
7.9394	1,3,6-Octatriene, 3,7-dimethyl-, (Z)-	3338-55-4	C10H16	6227962	98.7	1.93	3.59
8.2084	.gamma.-Terpinene	99-85-4	C10H16	202173	95.4	0.06	0.12
8.4373	Bicyclo[3.1.0]hexan-2-ol, 2-methyl-5-(1-methylethyl)-, (1.alpha.,2.beta.,5.alpha.)-	15537-55-0 5989-33-3	C10H18O	19959	80.9	0.01	0.01
8.5803	2-Furanmethanol, 5-ethenyltetrahydro-.alpha.,.alpha.,5-trimethyl-, cis-	586-62-9	C10H18O2	452725	96.1	0.14	0.26
8.9980	Cyclohexene, 1-methyl-4-(1-methylethylidene)-	78-70-6	C10H16	1076820	94.0	0.33	0.62
9.3986	Linalool	2442-10-6	C10H18O	80101879	99.2	24.81	46.13
9.6847	1-Octen-3-yl-acetate	15537-55-0	C10H18O2	1544418	95.7	0.48	0.89
9.9021	Bicyclo[3.1.0]hexan-2-ol, 2-methyl-5-(1-methylethyl)-, (1.alpha.,2.beta.,5.alpha.)-	4864-61-3	C10H18O	84416	75.8	0.03	0.05
10.0108	3-Octanol, acetate		C10H20O2	188176	85.6	0.06	0.11

RT	Compound Name	CAS#	Formula	Area	Match Score	Sample	Sample
10.1367	1,4-Hexadiene, 5-methyl-3-(1-methylethylidene)-	<a href="#">113687-24-4</a>	C10H16	120056	83.8	0.04	0.07
10.5029	Camphor	<a href="#">76-22-2</a>	C10H16O	476544	94.4	0.15	0.27
10.6860	9-Decen-1-ol, 2-methylpropionate	<a href="#">1000447-32-3</a>	C14H26O2	83110	72.7	0.03	0.05
10.8291	2H-Pyran, 3,6-dihydro-4-methyl-2-(2-methyl-1-propenyl)-	<a href="#">1786-08-9</a>	C10H16O	26239	81.7	0.01	0.02
11.1152	endo-Borneol	<a href="#">507-70-0</a>	C10H18O	291935	94.1	0.09	0.17
11.1838	4-Hexen-1-ol, 5-methyl-2-(1-methylethenyl)-, (R)-	<a href="#">498-16-8</a>	C10H18O	281454	74.1	0.09	0.16
11.4127	Terpinen-4-ol	<a href="#">562-74-3</a>	C10H18O	1184223	97.0	0.37	0.68
11.5844	Benzenemethanol, .alpha.,.alpha.,4-trimethyl-	<a href="#">1197-01-9</a>	C10H14O	69967	73.3	0.02	0.04
11.6588	2-Cyclohexen-1-one, 4-(1-methylethyl)-	<a href="#">500-02-7</a>	C9H14O	880805	92.3	0.27	0.51
11.7904	3-Cyclohexene-1-methanol, .alpha.,.alpha.,4-trimethyl-, (R)-	<a href="#">7785-53-7</a>	C10H18O	4623783	98.3	1.43	2.66
12.6773	5,8,10-Undecatrien-3-ol	<a href="#">56255-81-3</a>	C11H18O	19818	61.7	0.01	0.01
12.7917	Isobornyl formate	<a href="#">1200-67-5</a>	C11H18O2	44064	87.5	0.01	0.03
12.9634	2,6-Octadien-1-ol, 3,7-dimethyl-, (Z)-	<a href="#">106-25-2</a>	C10H18O	68039	77.9	0.02	0.04
13.1236	Benzaldehyde, 4-(1-methylethyl)-	<a href="#">122-03-2</a>	C10H12O	339804	94.1	0.11	0.20
13.2495	(-)-Carvone	<a href="#">6485-40-1</a>	C10H14O	82703	89.4	0.03	0.05
13.7130	Linalyl acetate	<a href="#">115-95-7</a>	C12H20O2	173632478	99.4	53.78	100.00
14.0964	1-Cyclohexene-1-carboxaldehyde, 4-(1-methylethyl)-	<a href="#">21391-98-0</a>	C10H16O	29901	79.3	0.01	0.02
14.2222	Fragranyl acetate	<a href="#">51117-22-7</a>	C12H20O2	18866	71.6	0.01	0.01
14.3825	Acetic acid, 1,7,7-trimethyl-bicyclo[2.2.1]hept-2-yl ester	<a href="#">92618-89-8</a>	C12H20O2	761001	97.2	0.24	0.44
14.5484	4-Hexen-1-ol, 5-methyl-2-(1-methylethenyl)-, acetate	<a href="#">25905-14-0</a>	C12H20O2	5980267	97.5	1.85	3.44
16.0419	.alpha.-Terpineol	<a href="#">98-55-5</a>	C10H18O	73430	87.4	0.02	0.04
16.2078	7-Propylidene-bicyclo[4.1.0]heptane	<a href="#">82253-09-6</a>	C10H16	43176	69.2	0.01	0.02
16.4481	2,6-Octadien-1-ol, 3,7-dimethyl-, acetate, (Z)-	<a href="#">141-12-8</a>	C12H20O2	1376284	95.7	0.43	0.79
16.9459	2,6-Octadien-1-ol, 3,7-dimethyl-, acetate	<a href="#">16409-44-2</a>	C12H20O2	2628561	96.5	0.81	1.51
17.0775	(1S,5S)-2-Methyl-5-((R)-6-methylhept-5-en-2-yl)bicyclo[3.1.0]hex-2-ene	<a href="#">159407-35-9</a>	C15H24	35952	82.2	0.01	0.02
17.4781	trans-.alpha.-Bergamotene	<a href="#">13474-59-4</a>	C15H24	82530	89.1	0.03	0.05
17.6211	1,4-Methanocycloocta[d]pyridazine, 1,4,4a,5,6,9,10,10a-octahydro-11,11-dimethyl-, (1.alpha.,4.alpha.,4a.alpha.,10a.alpha.)- trans-.alpha.-Bergamotene	<a href="#">1000221-85-9</a>	C13H20N2	131316	90.3	0.04	0.08
17.7070	Bicyclo[7.2.0]undec-4-ene, 4,11,11-trimethyl-8-methylene-, [1R-(1R*,4Z,9S*)]-	<a href="#">13474-59-4</a>	C15H24	83941	90.6	0.03	0.05
17.8042	Bicyclo[2.2.1]heptane, 2-methylene-3-(1-methylethenyl)-	<a href="#">118-65-0</a>	C15H24	11673299	97.1	3.62	6.72
18.0102	Bicyclo[5.2.0]nonane, 4-methylene-2,8,8-trimethyl-2-vinyl-	<a href="#">77764-41-1</a>	C11H16	47046	71.0	0.01	0.03
18.0903	trans-.alpha.-Bergamotene	<a href="#">1000159-38-2</a>	C15H24	54891	77.7	0.02	0.03
18.2105	1,6,10-Dodecatriene, 7,11-dimethyl-3-methylene-	<a href="#">13474-59-4</a>	C15H24	378348	89.3	0.12	0.22
18.4451	Aromandendrene	<a href="#">77129-48-7</a>	C15H24	78873	87.0	0.02	0.05
18.5424	Humulene	<a href="#">489-39-4</a>	C15H24	184752	78.5	0.06	0.11
18.6339	(E)-.beta.-Famesene	<a href="#">6753-98-6</a>	C15H24	254414	90.6	0.08	0.15
18.7484	Germacrene D	<a href="#">18794-84-8</a>	C15H24	1726866	96.7	0.53	0.99
19.3091	(E)-.beta.-Famesene	<a href="#">23986-74-5</a>	C15H24	245795	91.9	0.08	0.14
19.4121	.beta.-Myrcene	<a href="#">18794-84-8</a>	C15H24	80987	84.2	0.03	0.05
19.9958	Naphthalene, 1,2,4a,5,6,8a-hexahydro-4,7-dimethyl-1-(1-methylethyl)-	<a href="#">123-35-3</a>	C10H16	40752	79.9	0.01	0.02
20.1102	Naphthalene, 1,2,3,5,6,8a-hexahydro-4,7-dimethyl-1-(1-methylethyl)-, (1S-cis)-	<a href="#">483-75-0</a>	C15H24	530980	94.8	0.16	0.31
20.3391	1,3-Bis-(2-cyclopropyl,2-methylcyclopropyl)-but-2-en-1-one	<a href="#">483-76-1</a>	C15H24	115477	82.1	0.04	0.07
21.0086	Caryophyllene oxide	<a href="#">1000222-08-6</a>	C18H26O	69714	83.9	0.02	0.04
21.7639	1H-Cyclopenta[1,3]cyclopropa[1,2]benzene, octahydro-7-methyl-3-methylene-4-(1-methylethyl)-, [3aS-(3a.alpha.,3b.beta.,4.beta.,7.alpha.,7aS*)]-	<a href="#">1139-30-6</a>	C15H24O	473671	91.2	0.15	0.27
23.3203		<a href="#">13744-15-5</a>	C15H24	206288	88.7	0.06	0.12

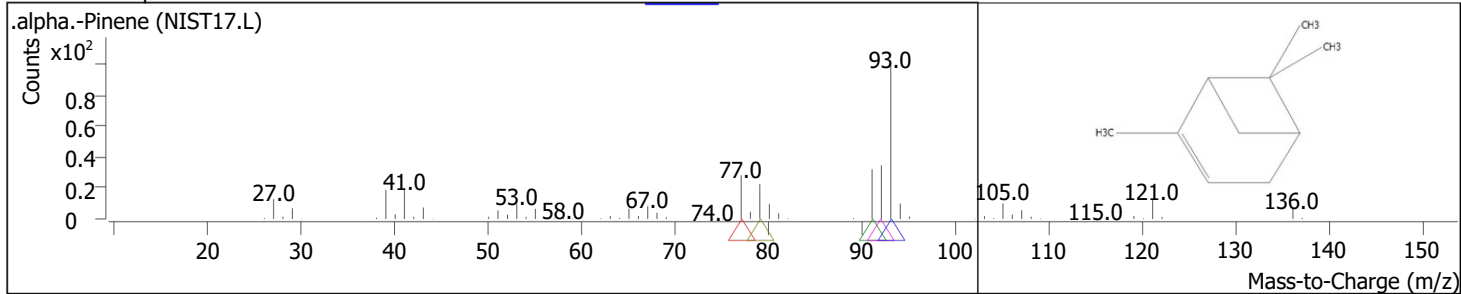
RT	Compound Name	CAS#	Formula	Area	Match Score	Sample	Sample
4.8667	Tricyclo[2.2.1.0(2,6)]heptane, 1,7,7-trimethyl-	<a href="#">508-32-7</a>	C10H16	83625	87.2	0.03	0.05



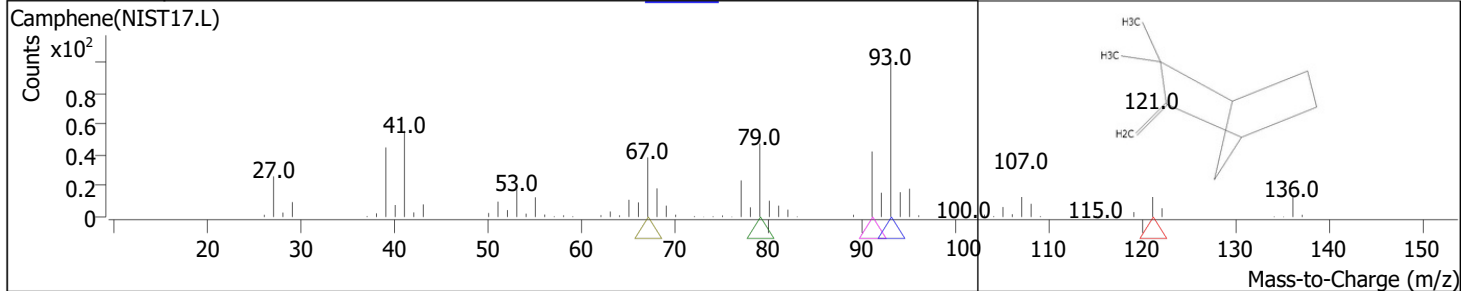
RT	Compound Name	CAS#	Formula	Area	Match Score	Sample	Sample
4.9811	Bicyclo[3.1.0]hex-2-ene, 2-methyl-5-(1-methylethyl)-	<a href="#">2867-05-2</a>	C10H16	111939	89.9	0.03	0.06



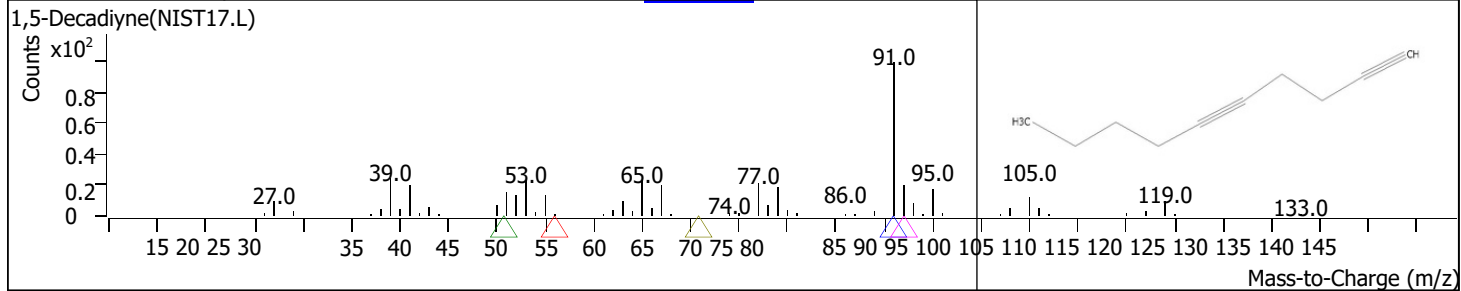
RT	Compound Name	CAS#	Formula	Area	Match Score	Sample	Sample
5.1242	.alpha.-Pinene	<a href="#">80-56-8</a>	C10H16	355024	96.6	0.11	0.20



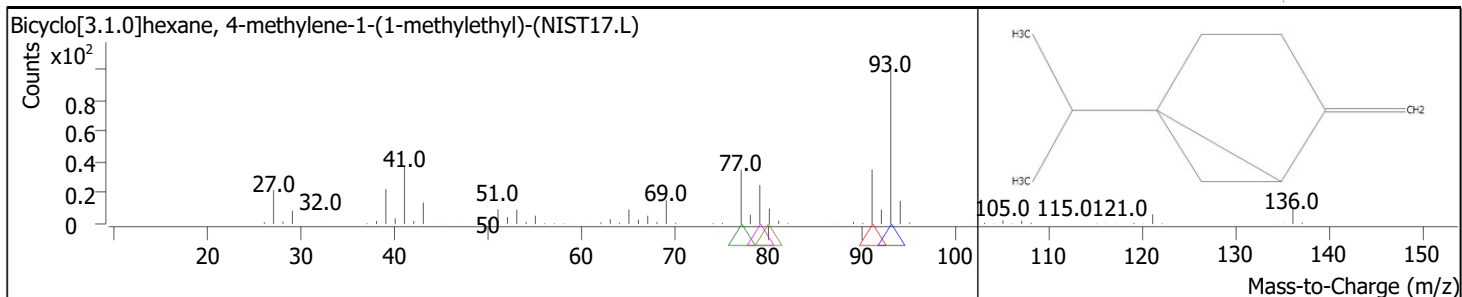
RT	Compound Name	CAS#	Formula	Area	Match Score	Sample	Sample
5.4446	Camphene	<a href="#">79-92-5</a>	C10H16	988656	98.0	0.31	0.57



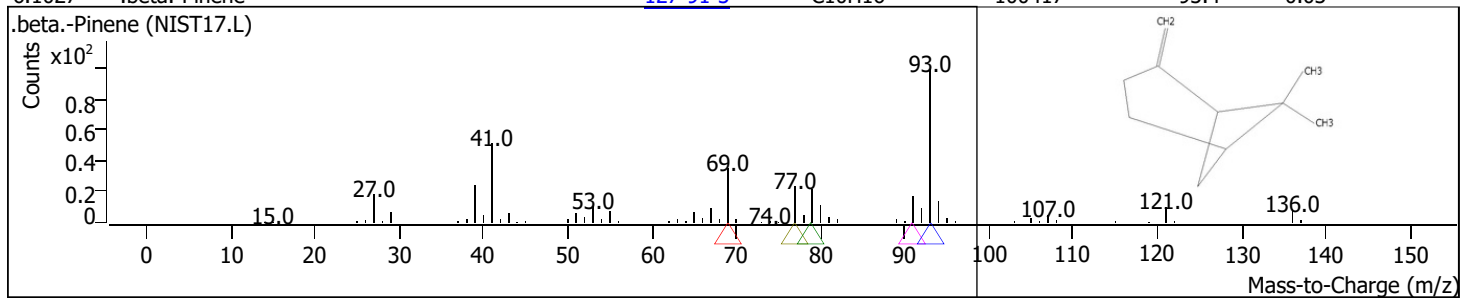
RT	Compound Name	CAS#	Formula	Area	Match Score	Sample	Sample
5.5991	1,5-Decadiyne	<a href="#">53963-03-4</a>	C10H14	26357	63.7	0.01	0.02



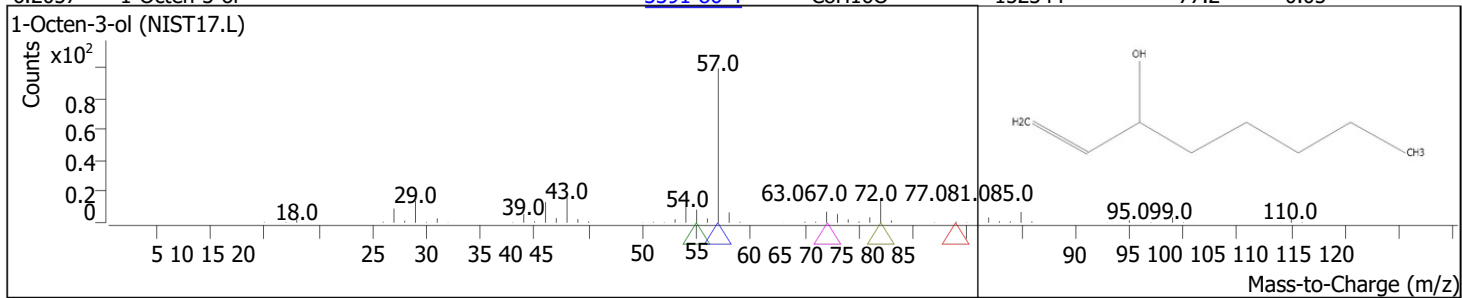
RT	Compound Name	CAS#	Formula	Area	Match Score	Sample	Sample
6.0340	Bicyclo[3.1.0]hexane, 4-methylene-1-(1-methylethyl)-	<a href="#">3387-41-5</a>	C10H16	216350	95.7	0.07	0.12



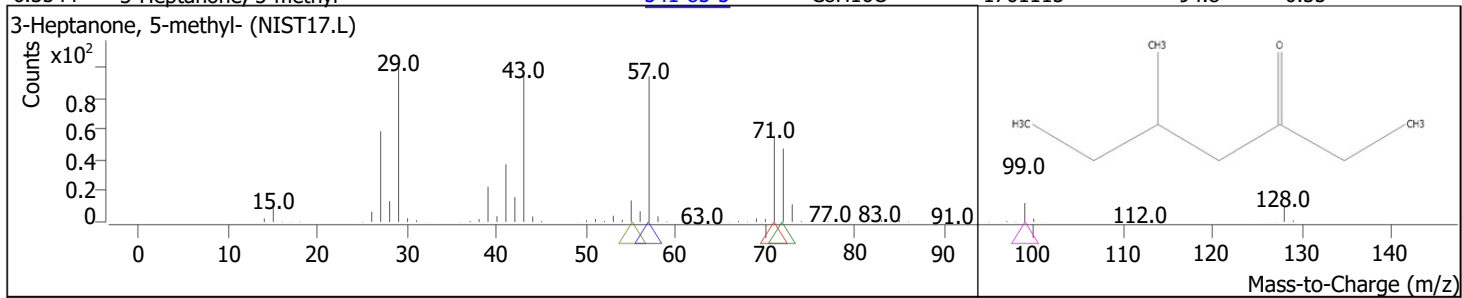
RT	Compound Name	CAS#	Formula	Area	Match Score	Sample	Sample
6.1027	.beta.-Pinene	<a href="#">127-91-3</a>	C10H16	100417	93.4	0.03	0.06



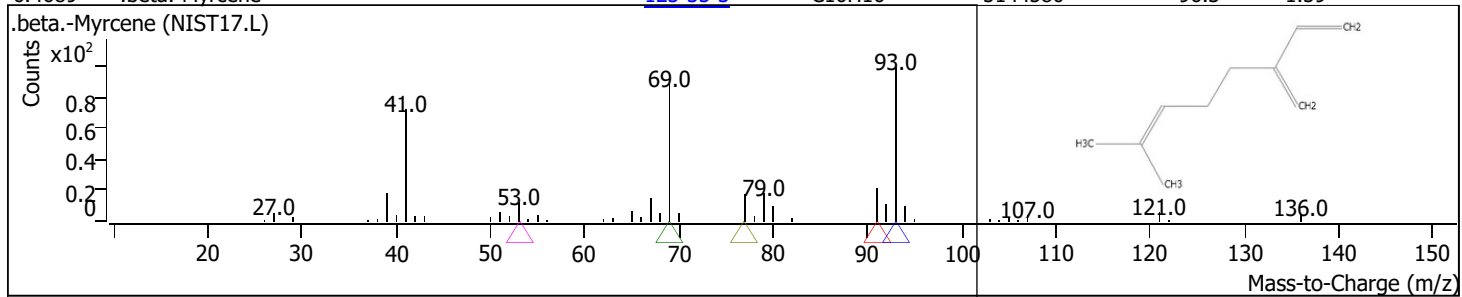
RT	Compound Name	CAS#	Formula	Area	Match Score	Sample	Sample
6.2057	1-Octen-3-ol	<a href="#">3391-86-4</a>	C8H16O	152344	77.2	0.05	0.09



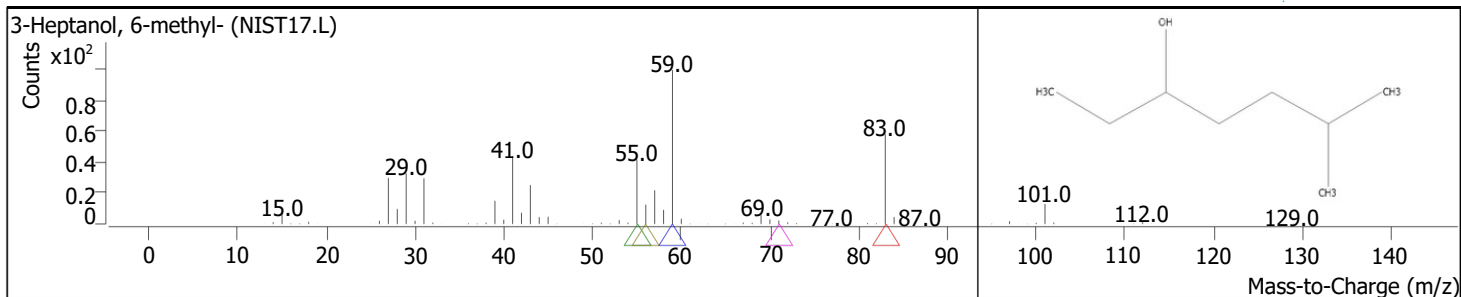
RT	Compound Name	CAS#	Formula	Area	Match Score	Sample	Sample
6.3544	3-Heptanone, 5-methyl-	<a href="#">541-85-5</a>	C8H16O	1761115	94.8	0.55	1.01



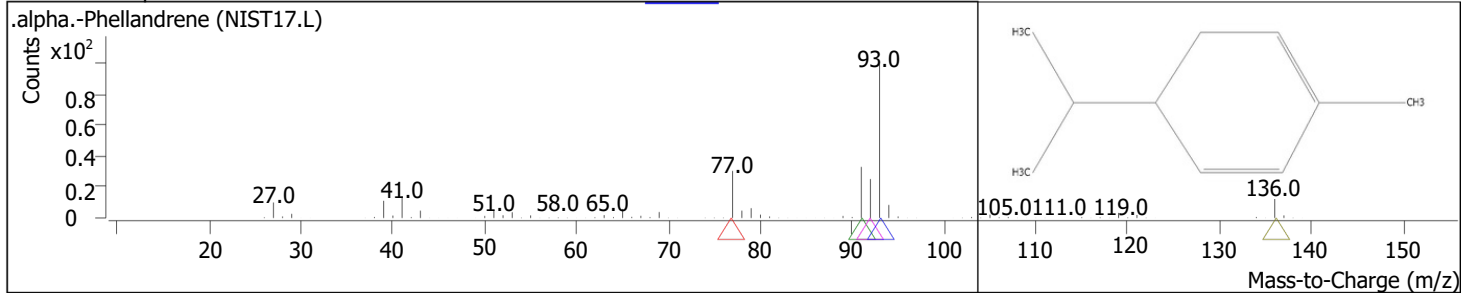
RT	Compound Name	CAS#	Formula	Area	Match Score	Sample	Sample
6.4689	.beta.-Myrcene	<a href="#">123-35-3</a>	C10H16	5144580	96.3	1.59	2.96



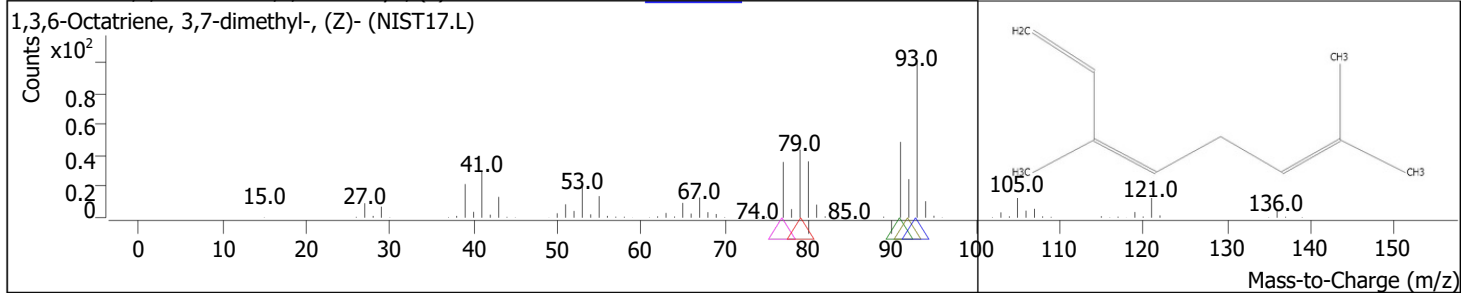
RT	Compound Name	CAS#	Formula	Area	Match Score	Sample	Sample
6.6119	3-Heptanol, 6-methyl-	<a href="#">18720-66-6</a>	C8H18O	196293	74.7	0.06	0.11



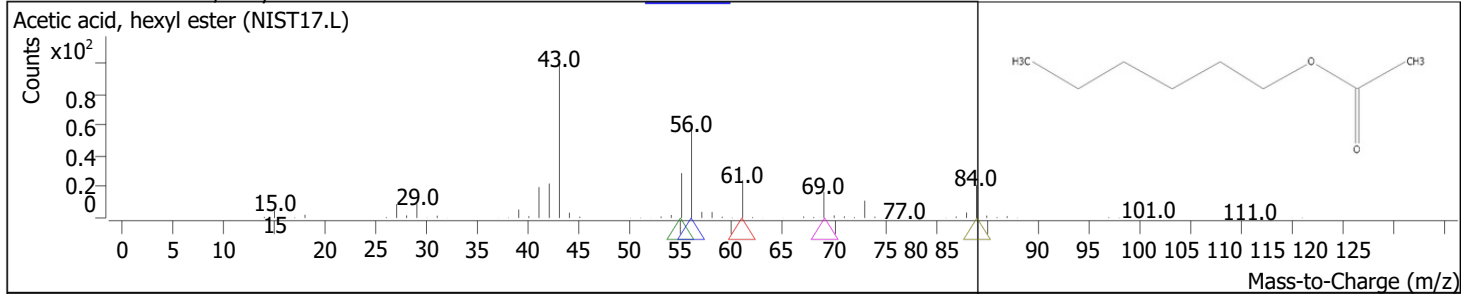
RT	Compound Name	CAS#	Formula	Area	Match Score	Sample	Sample
6.7893	.alpha.-Phellandrene	<a href="#">99-83-2</a>	C10H16	204297	89.7	0.06	0.12



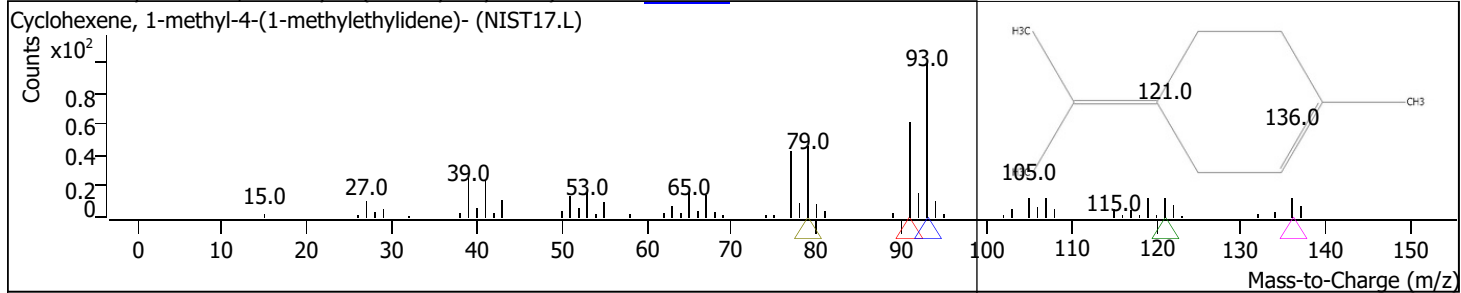
RT	Compound Name	CAS#	Formula	Area	Match Score	Sample	Sample
6.9209	1,3,6-Octatriene,3,7-dimethyl-, (Z)-	<a href="#">3338-55-4</a>	C10H16	382116	94.3	0.12	0.22



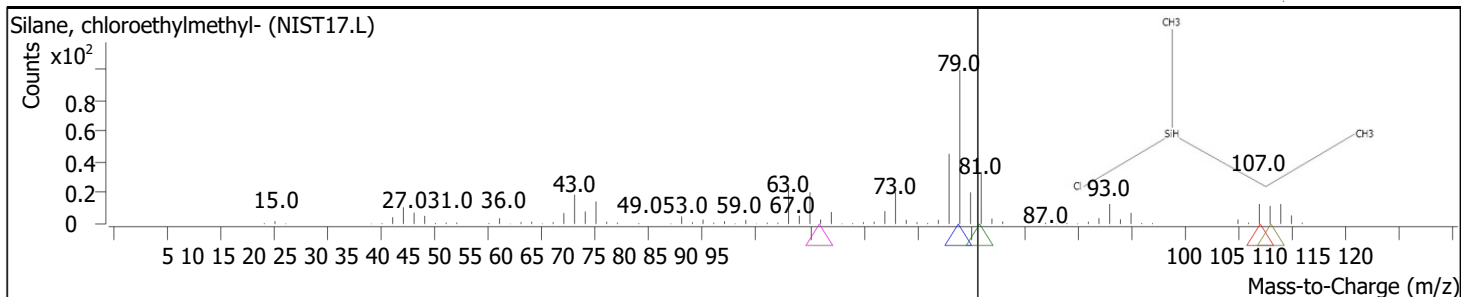
RT	Compound Name	CAS#	Formula	Area	Match Score	Sample	Sample
7.0525	Acetic acid, hexylester	<a href="#">142-92-7</a>	C8H16O2	198520	91.2	0.06	0.11



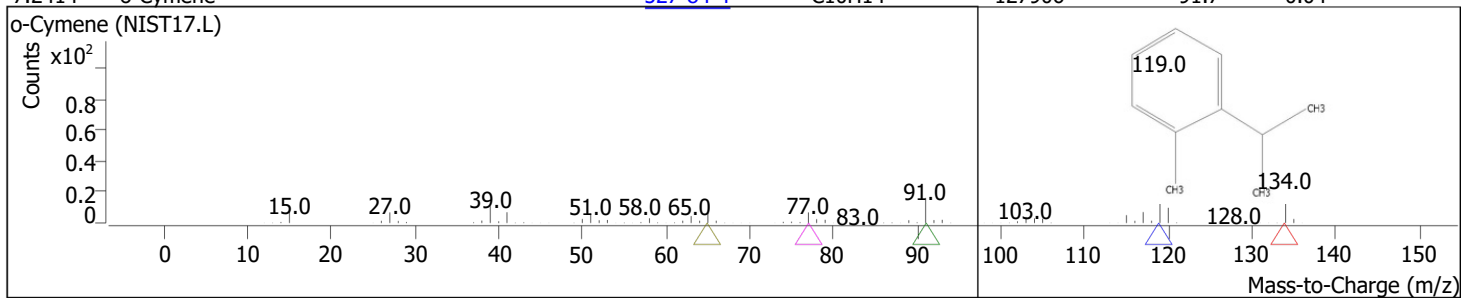
RT	Compound Name	CAS#	Formula	Area	Match Score	Sample	Sample
7.0983	Cyclohexene, 1-methyl-4-(1-methylethylidene)-	<a href="#">586-62-9</a>	C10H16	254876	92.4	0.08	0.15



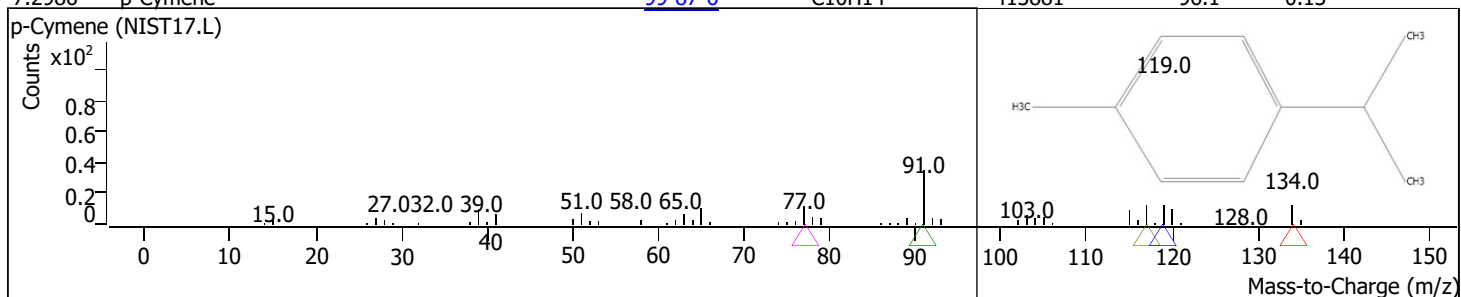
RT	Compound Name	CAS#	Formula	Area	Match Score	Sample	Sample
7.1727	Silane, chloroethylmethyl-	<a href="#">6374-21-6</a>	C3H9ClSi	57335	64.0	0.02	0.03



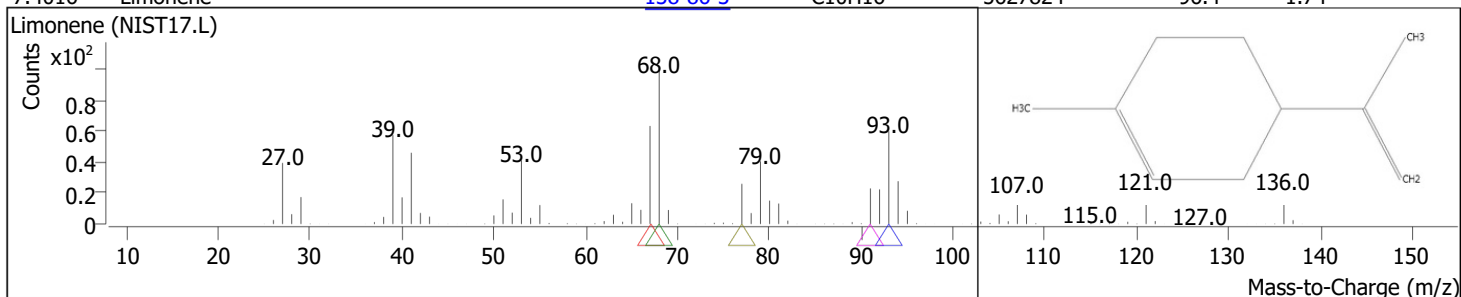
RT	Compound Name	CAS#	Formula	Area	Match Score	Sample	Sample
7.2414	o-Cymene	<a href="#">527-84-4</a>	C10H14	127906	91.7	0.04	0.07



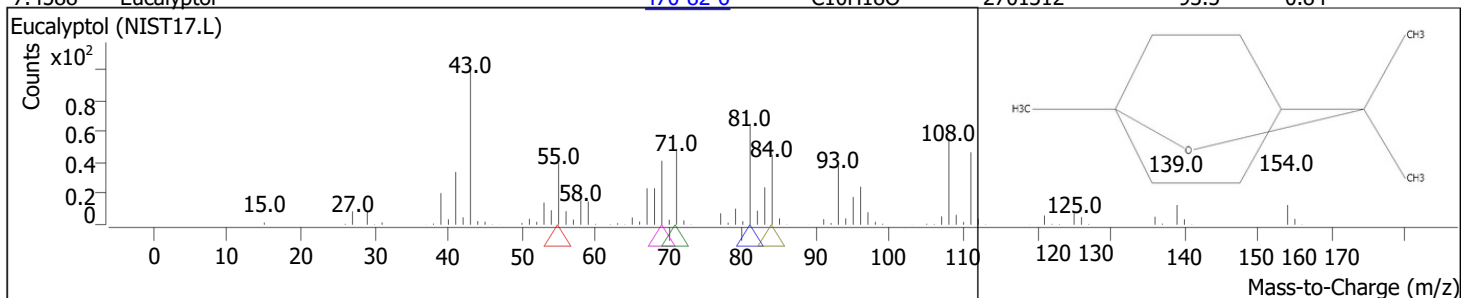
RT	Compound Name	CAS#	Formula	Area	Match Score	Sample	Sample
7.2986	p-Cymene	<a href="#">99-87-6</a>	C10H14	413881	96.1	0.13	0.24



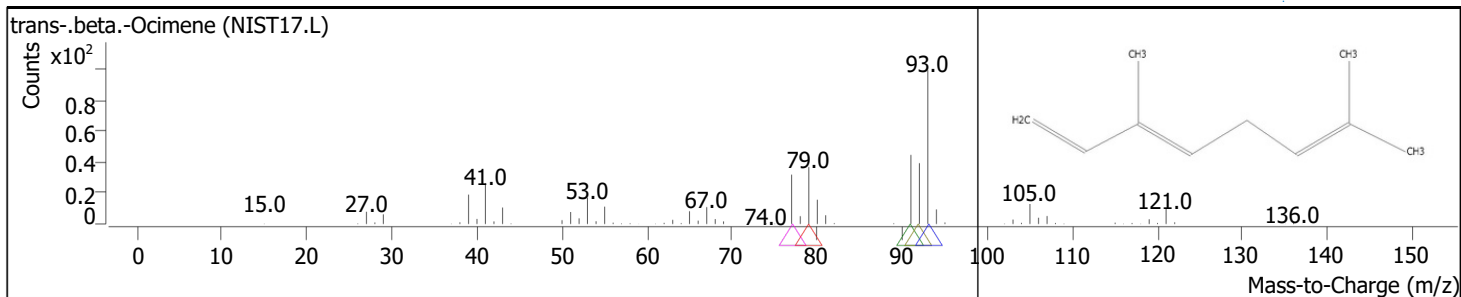
RT	Compound Name	CAS#	Formula	Area	Match Score	Sample	Sample
7.4016	Limonene	<a href="#">138-86-3</a>	C10H16	5627824	96.4	1.74	3.24



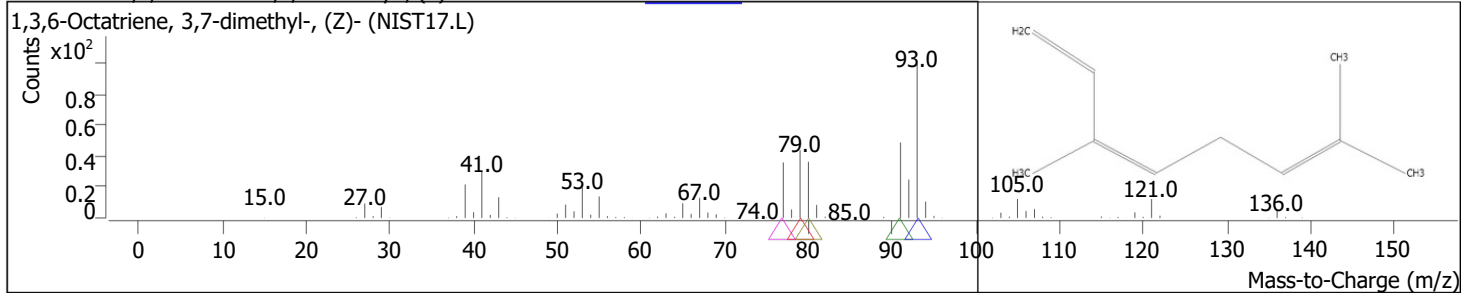
RT	Compound Name	CAS#	Formula	Area	Match Score	Sample	Sample
7.4588	Eucalyptol	<a href="#">470-82-6</a>	C10H18O	2701312	93.5	0.84	1.56



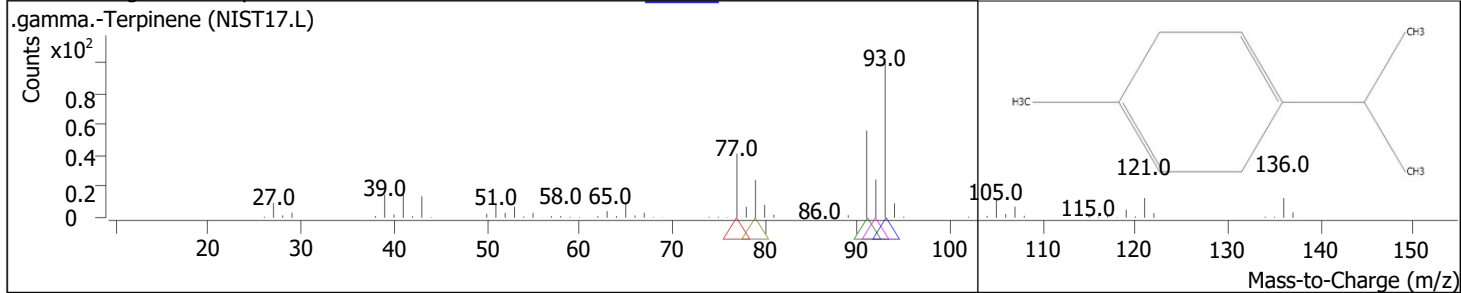
RT	Compound Name	CAS#	Formula	Area	Match Score	Sample	Sample
7.6705	trans-.beta.-Ocimene	<a href="#">3779-61-1</a>	C10H16	4247635	98.7	1.32	2.45



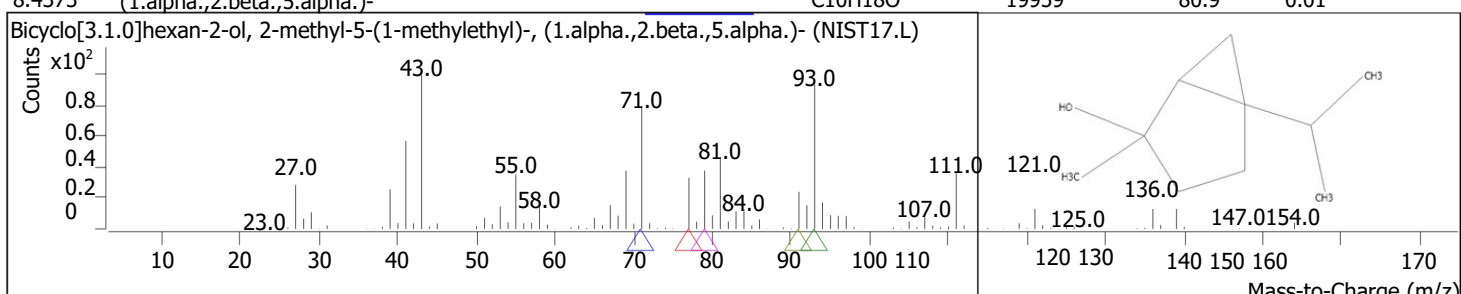
RT	Compound Name	CAS#	Formula	Area	Match Score	Sample	Sample
7.9394	1,3,6-Octatriene,3,7-dimethyl-, (Z)-	<a href="#">3338-55-4</a>	C10H16	6227962	98.7	1.93	3.59



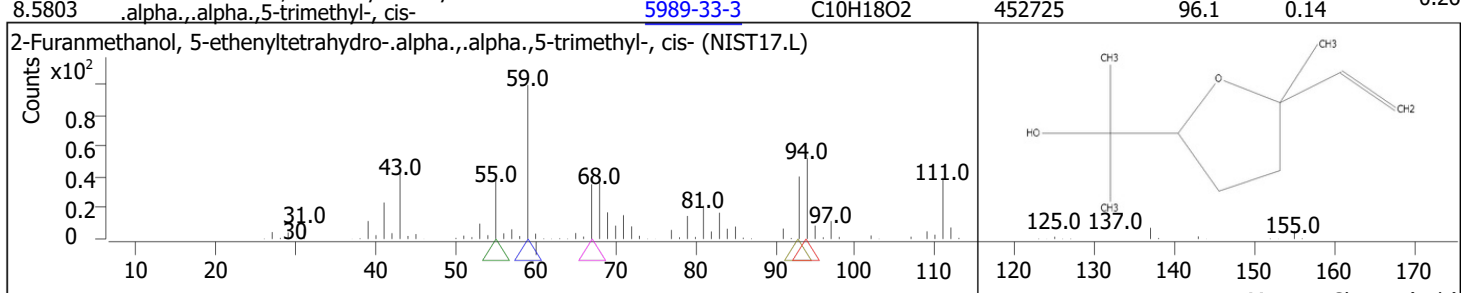
RT	Compound Name	CAS#	Formula	Area	Match Score	Sample	Sample
8.2084	.gamma.-Terpinene	<a href="#">99-85-4</a>	C10H16	202173	95.4	0.06	0.12



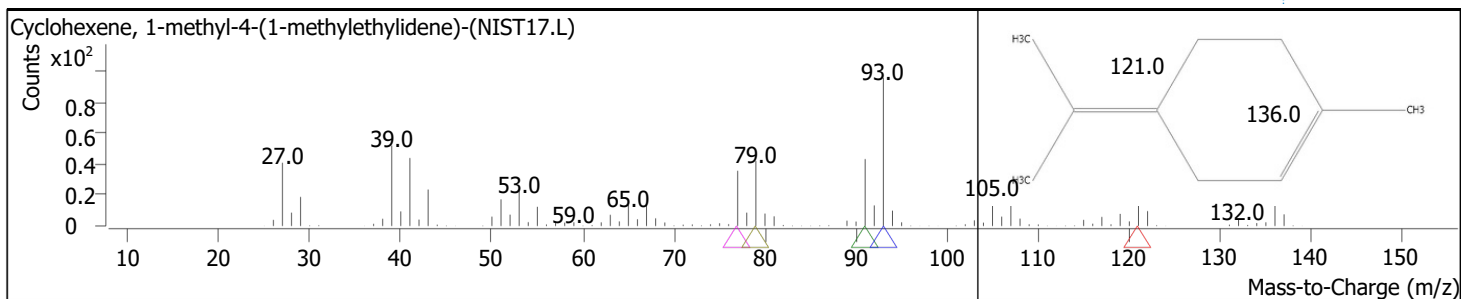
RT	Compound Name	CAS#	Formula	Area	Match Score	Sample	Sample
8.4373	Bicyclo[3.1.0]hexan-2-ol, 2-methyl-5-(1-methylethyl)-, (1.alpha.,2.beta.,5.alpha.)-	<a href="#">15537-55-0</a>	C10H18O	19959	80.9	0.01	0.01



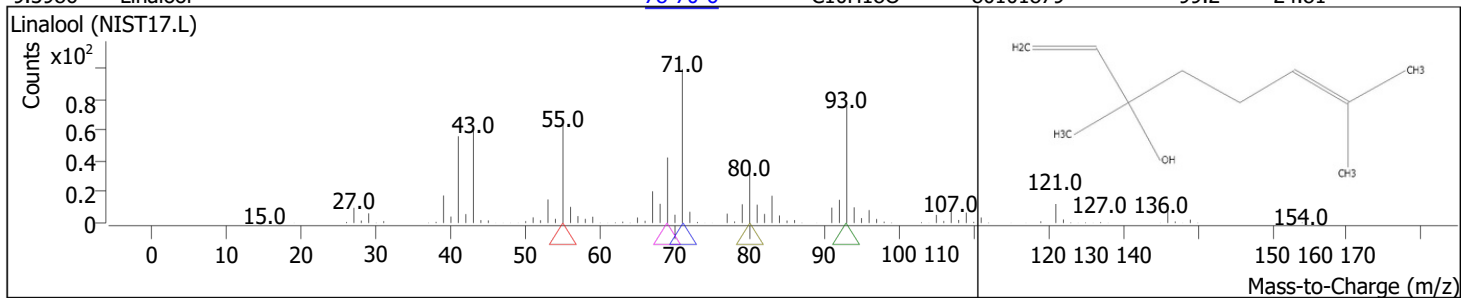
RT	Compound Name	CAS#	Formula	Area	Match Score	Sample	Sample
8.5803	2-Furanmethanol, 5-ethenyltetrahydro-.alpha.,.alpha.-5-trimethyl-, cis-	<a href="#">5989-33-3</a>	C10H18O2	452725	96.1	0.14	0.26



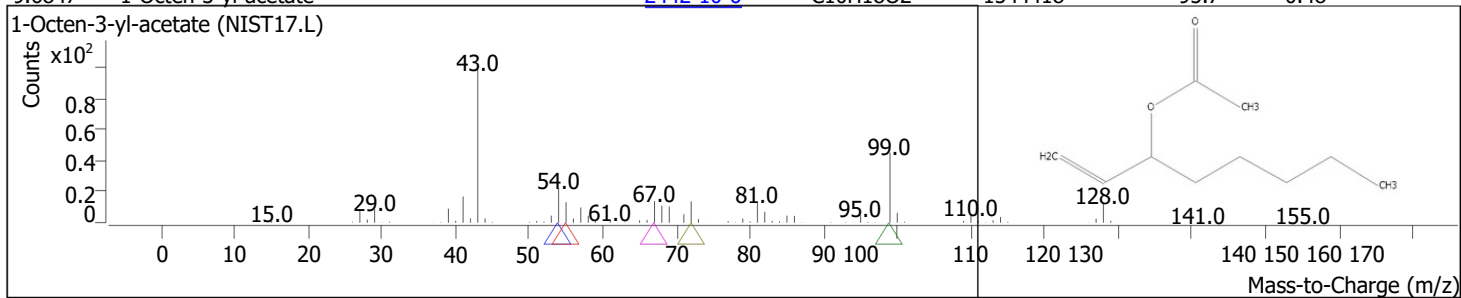
RT	Compound Name	CAS#	Formula	Area	Match Score	Sample	Sample
8.9980	Cyclohexene, 1-methyl-4-(1-methylethylidene)-	<a href="#">586-62-9</a>	C10H16	1076820	94.0	0.33	0.62



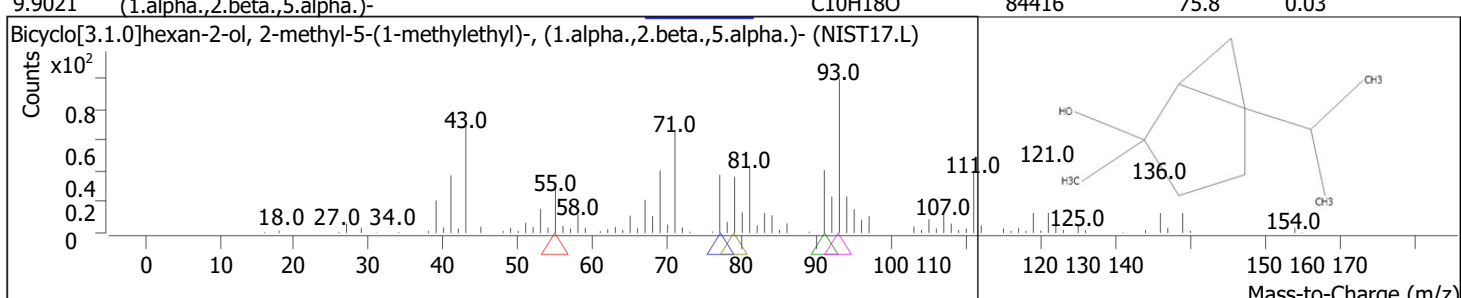
RT	Compound Name	CAS#	Formula	Area	Match Score	Sample	Sample
9.3986	Linalool	<a href="#">78-70-6</a>	C10H18O	80101879	99.2	24.81	46.13



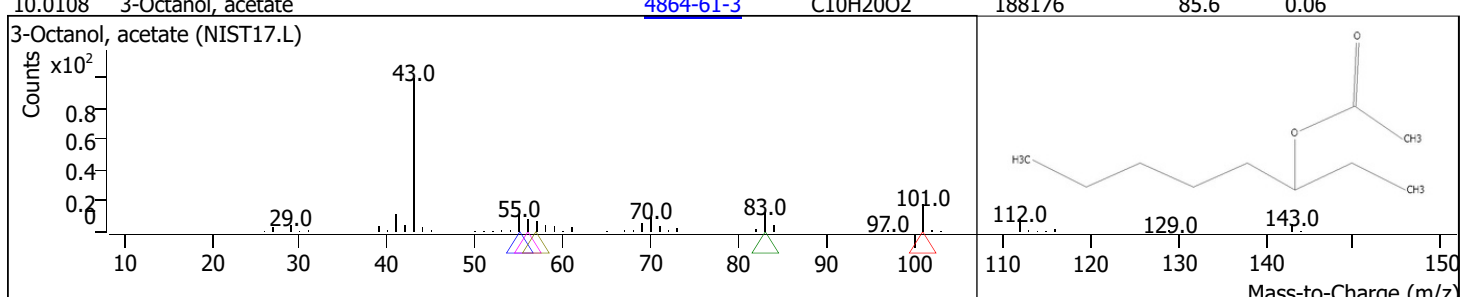
RT	Compound Name	CAS#	Formula	Area	Match Score	Sample	Sample
9.6847	1-Octen-3-yl-acetate	<a href="#">2442-10-6</a>	C10H18O2	1544418	95.7	0.48	0.89



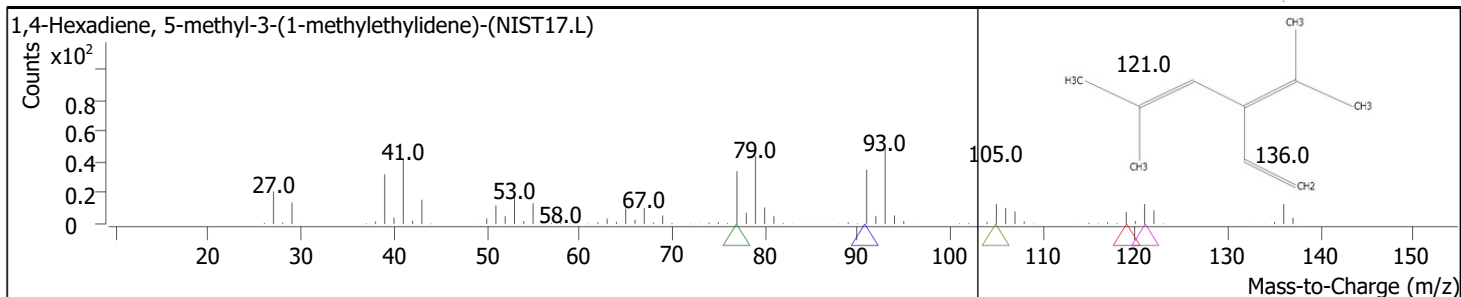
RT	Compound Name	CAS#	Formula	Area	Match Score	Sample	Sample
9.9021	Bicyclo[3.1.0]hexan-2-ol, 2-methyl-5-(1-methylethyl)-, (1.alpha.,2.beta.,5.alpha.)-	<a href="#">15537-55-0</a>	C10H18O	84416	75.8	0.03	0.05



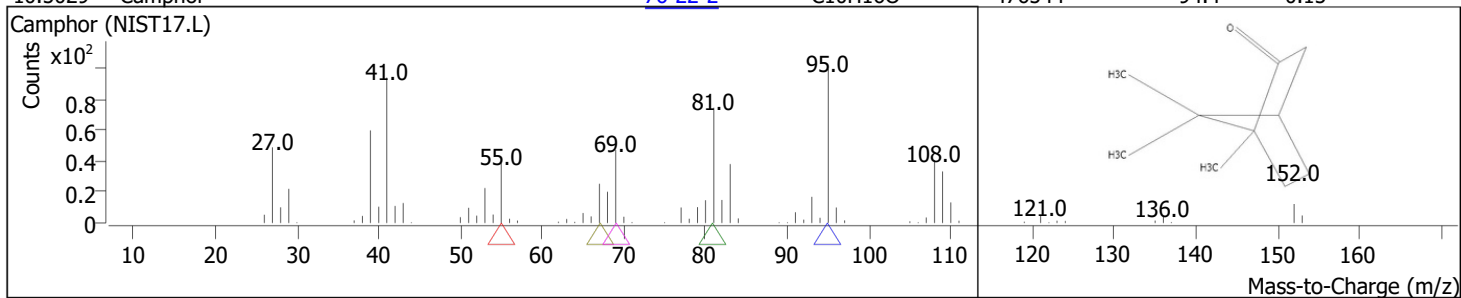
RT	Compound Name	CAS#	Formula	Area	Match Score	Sample	Sample
10.0108	3-Octanol, acetate	<a href="#">4864-61-3</a>	C10H20O2	188176	85.6	0.06	0.11



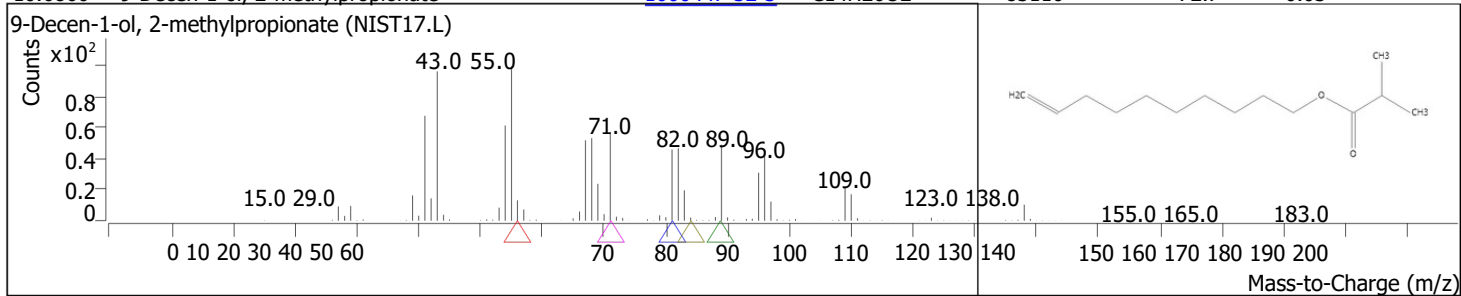
RT	Compound Name	CAS#	Formula	Area	Match Score	Sample	Sample
10.1367	1,4-Hexadiene, 5-methyl-3-(1-methylethylidene)-	<a href="#">113687-24-4</a>	C10H16	120056	83.8	0.04	0.07



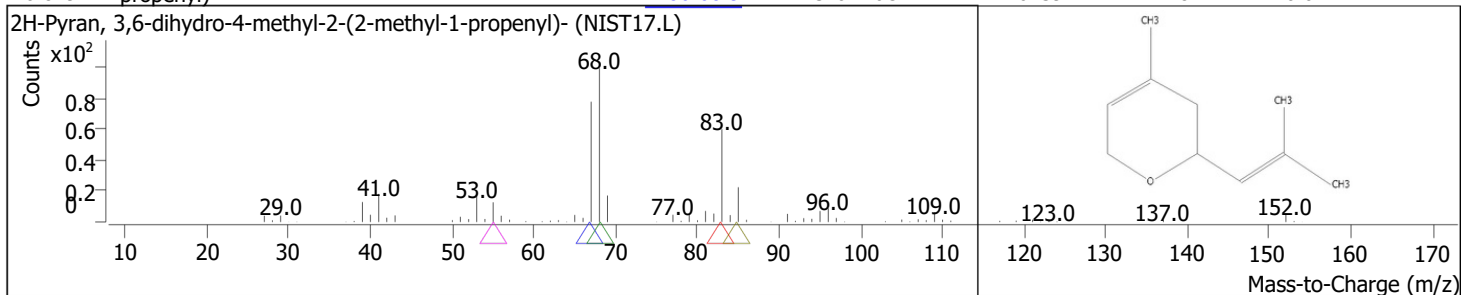
RT	Compound Name	CAS#	Formula	Area	Match Score	Sample	Sample
10.5029	Camphor	<a href="#">76-22-2</a>	C10H16O	476544	94.4	0.15	0.27



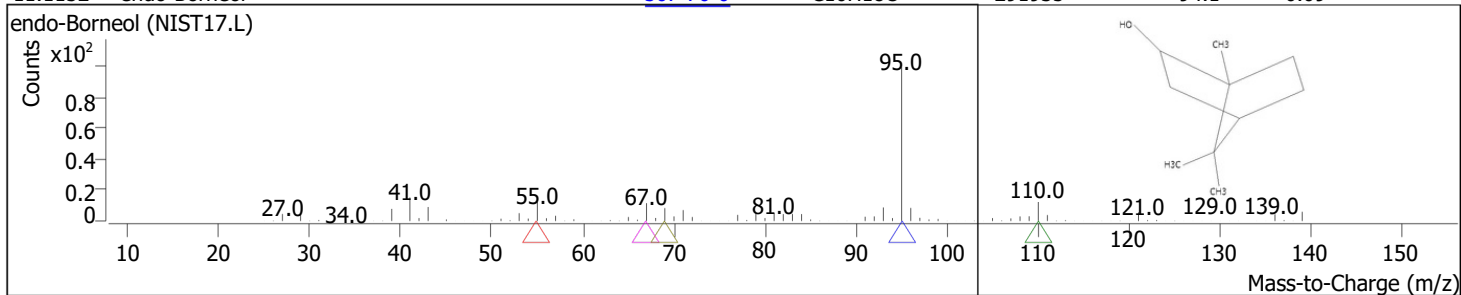
RT	Compound Name	CAS#	Formula	Area	Match Score	Sample	Sample
10.6860	9-Decen-1-ol, 2-methylpropionate	<a href="#">1000447-32-3</a>	C14H26O2	83110	72.7	0.03	0.05



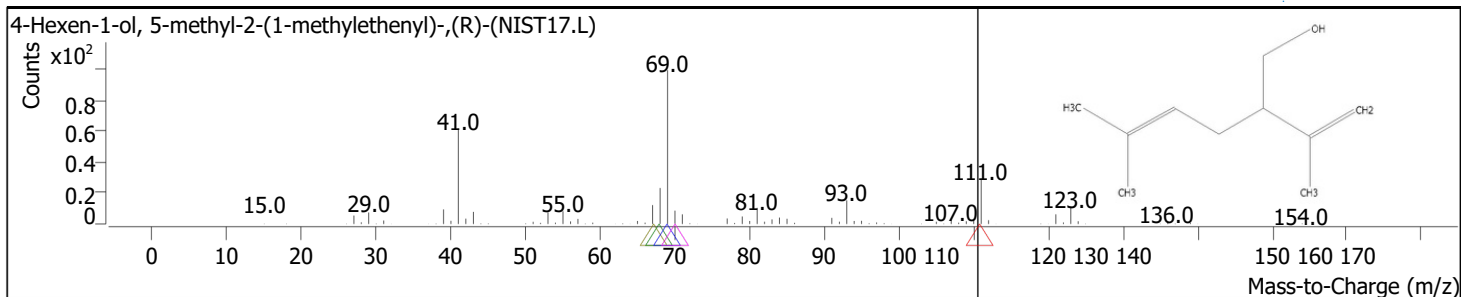
RT	Compound Name	CAS#	Formula	Area	Match Score	Sample	Sample
10.8291	2H-Pyran, 3,6-dihydro-4-methyl-2-(2-methyl-1-propenyl)-	<a href="#">1786-08-9</a>	C10H16O	26239	81.7	0.01	0.02



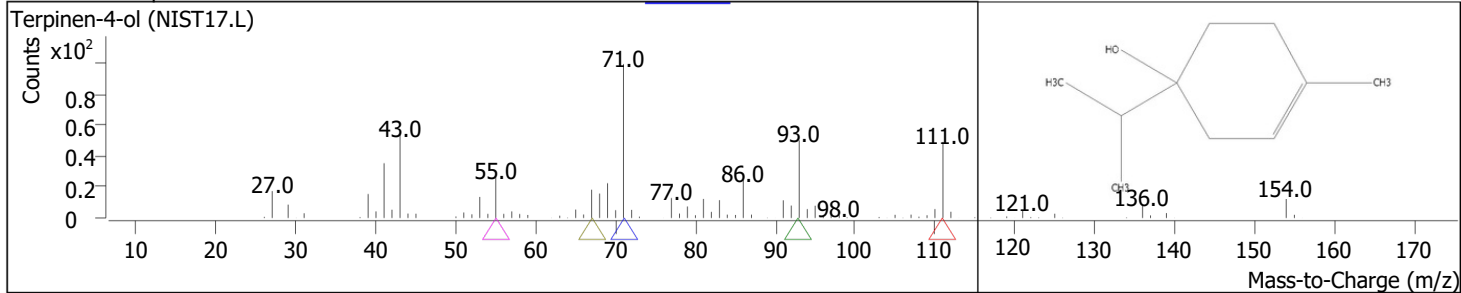
RT	Compound Name	CAS#	Formula	Area	Match Score	Sample	Sample
11.1152	endo-Borneol	<a href="#">507-70-0</a>	C10H18O	291935	94.1	0.09	0.17



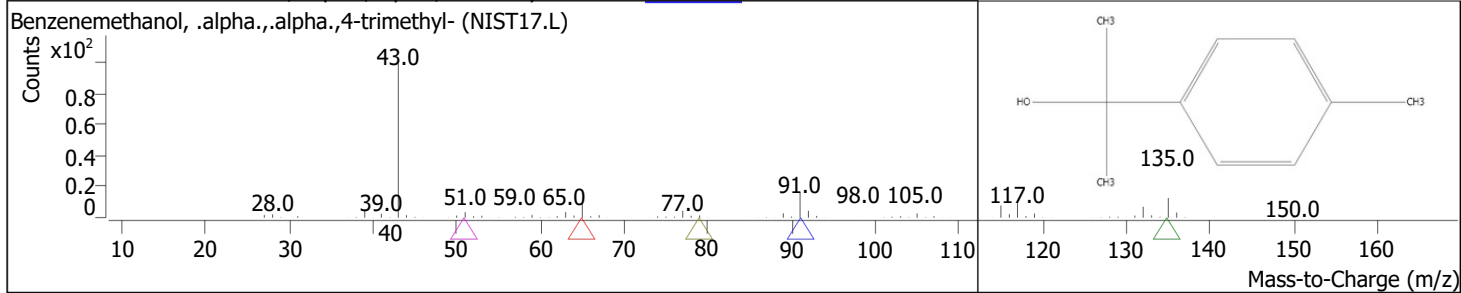
RT	Compound Name	CAS#	Formula	Area	Match Score	Sample	Sample
11.1838	4-Hexen-1-ol, 5-methyl-2-(1-methylethenyl)-, (R)-	<a href="#">498-16-8</a>	C10H18O	281454	74.1	0.09	0.16



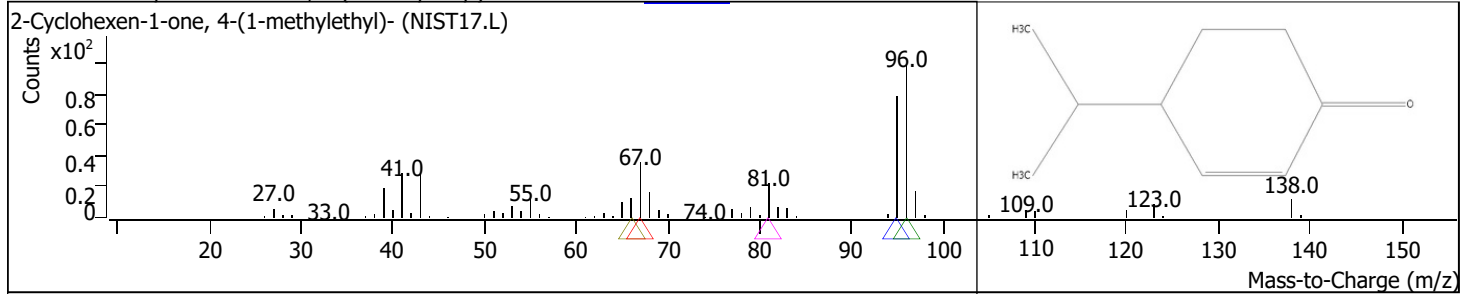
RT	Compound Name	CAS#	Formula	Area	Match Score	Sample	Sample
11.4127	Terpinen-4-ol	<a href="#">562-74-3</a>	C10H18O	1184223	97.0	0.37	0.68



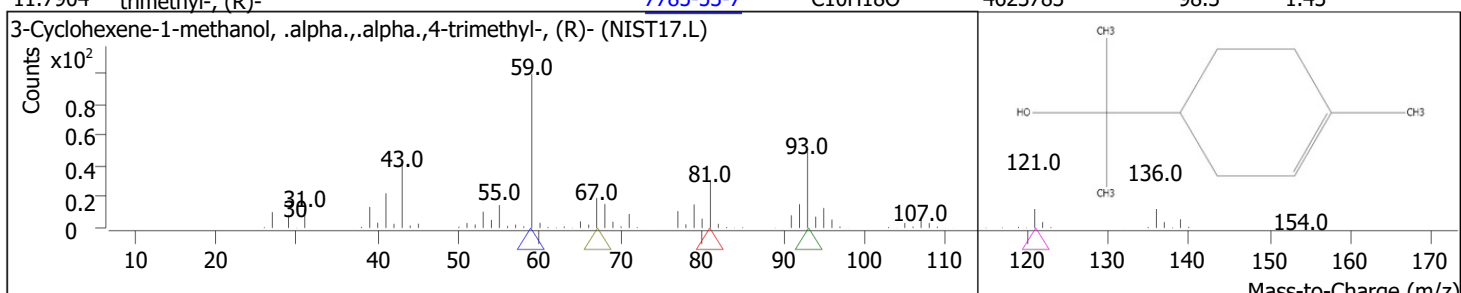
RT	Compound Name	CAS#	Formula	Area	Match Score	Sample	Sample
11.5844	Benzenemethanol, .alpha.,.alpha.,4-trimethyl-	<a href="#">1197-01-9</a>	C10H14O	69967	73.3	0.02	0.04



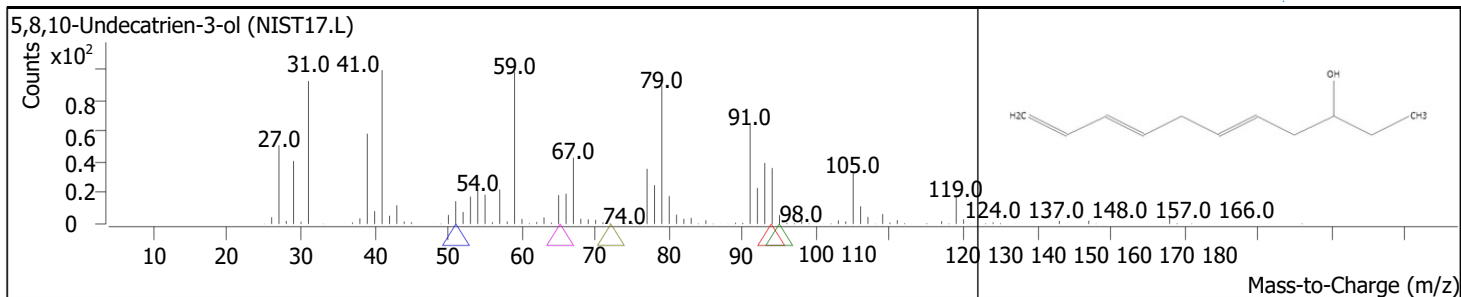
RT	Compound Name	CAS#	Formula	Area	Match Score	Sample	Sample
11.6588	2-Cyclohexen-1-one, 4-(1-methylethyl)-	<a href="#">500-02-7</a>	C9H14O	880805	92.3	0.27	0.51



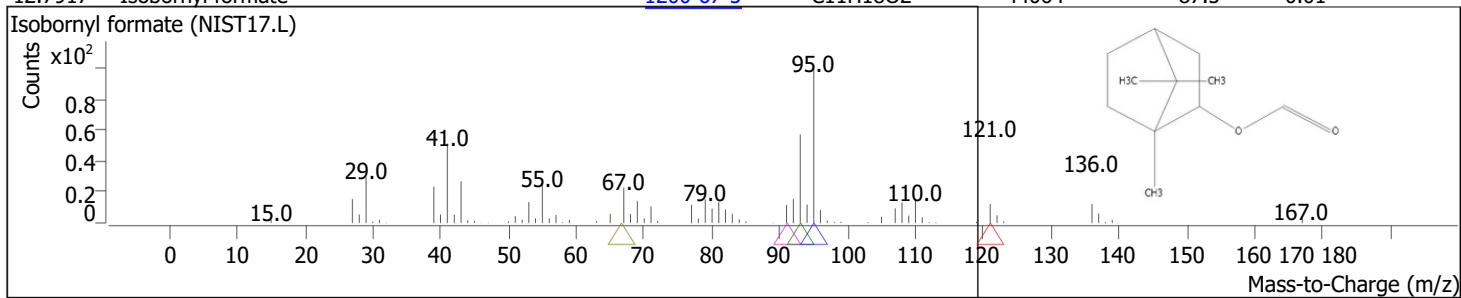
RT	Compound Name	CAS#	Formula	Area	Match Score	Sample	Sample
11.7904	3-Cyclohexene-1-methanol, .alpha.,.alpha.,4-trimethyl-, (R)-	<a href="#">7785-53-7</a>	C10H18O	4623783	98.3	1.43	2.66



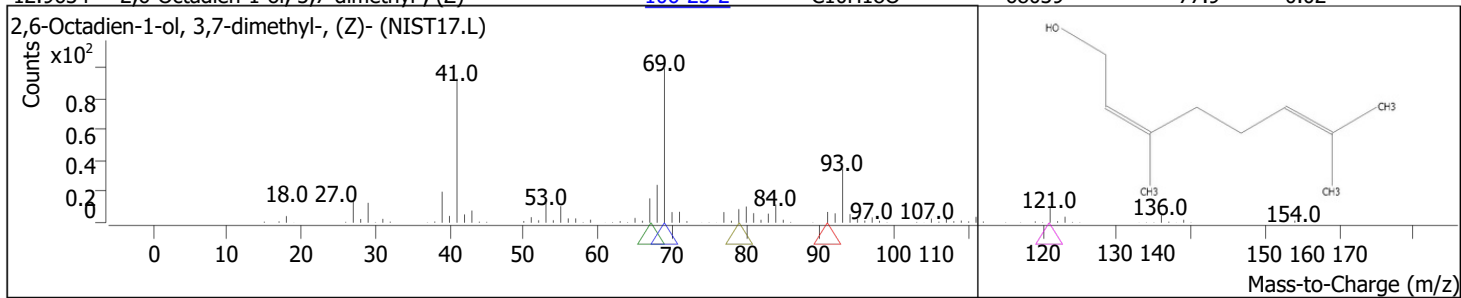
RT	Compound Name	CAS#	Formula	Area	Match Score	Sample	Sample
12.6773	5,8,10-Undecatrien-3-ol	<a href="#">56255-81-3</a>	C11H18O	19818	61.7	0.01	0.01



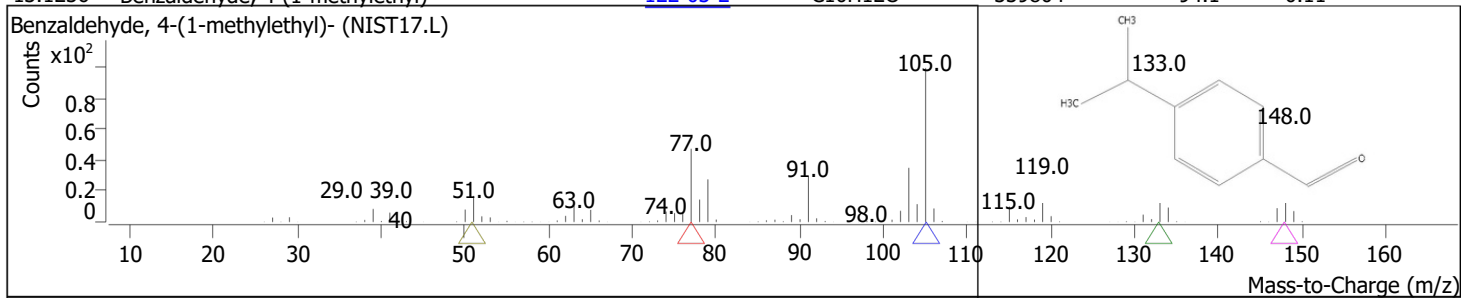
RT	Compound Name	CAS#	Formula	Area	Match Score	Sample	Sample
12.7917	Isobornyl formate	<a href="#">1200-67-5</a>	C11H18O2	44064	87.5	0.01	0.03



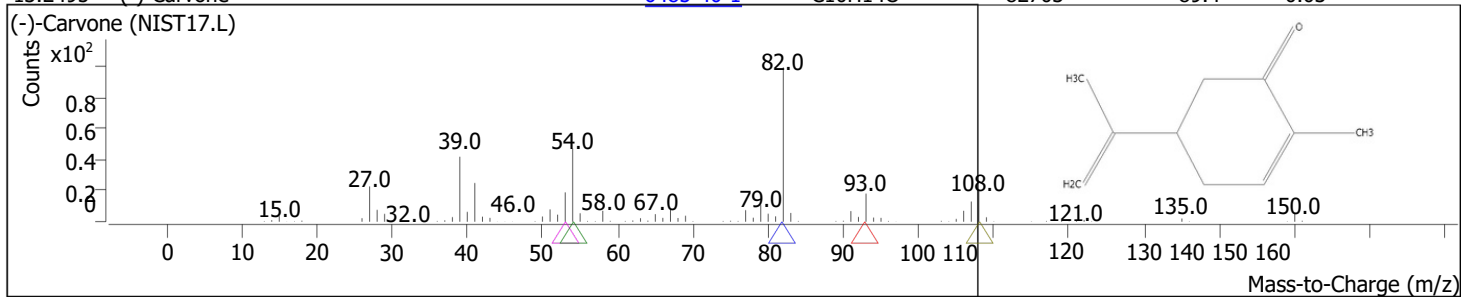
RT	Compound Name	CAS#	Formula	Area	Match Score	Sample	Sample
12.9634	2,6-Octadien-1-ol, 3,7-dimethyl-, (Z)-	<a href="#">106-25-2</a>	C10H18O	68039	77.9	0.02	0.04



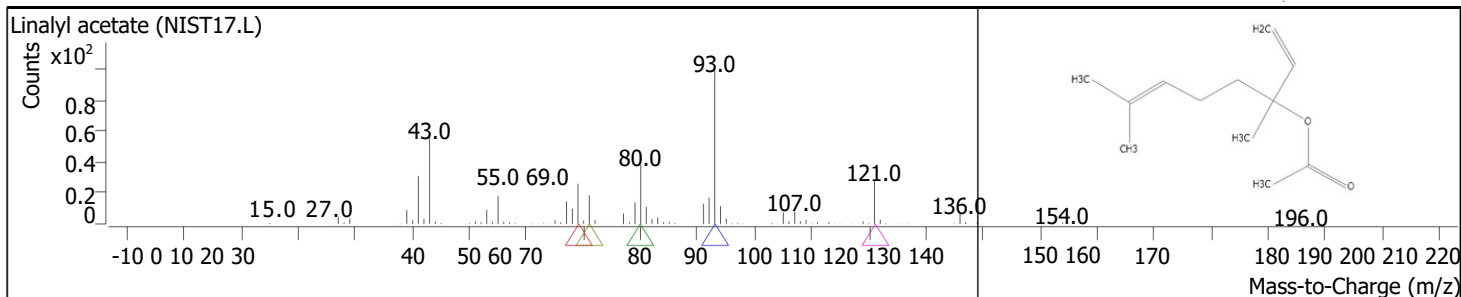
RT	Compound Name	CAS#	Formula	Area	Match Score	Sample	Sample
13.1236	Benzaldehyde, 4-(1-methylethyl)-	<a href="#">122-03-2</a>	C10H12O	339804	94.1	0.11	0.20



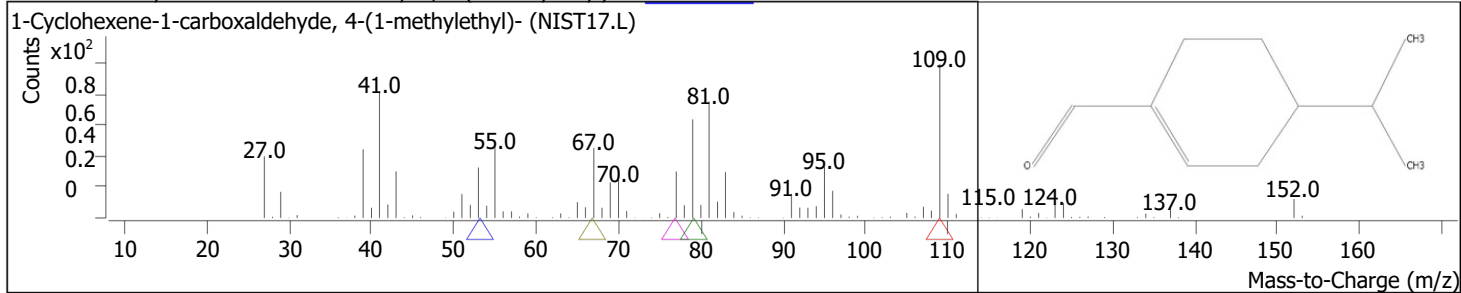
RT	Compound Name	CAS#	Formula	Area	Match Score	Sample	Sample
13.2495	(-)-Carvone	<a href="#">6485-40-1</a>	C10H14O	82703	89.4	0.03	0.05



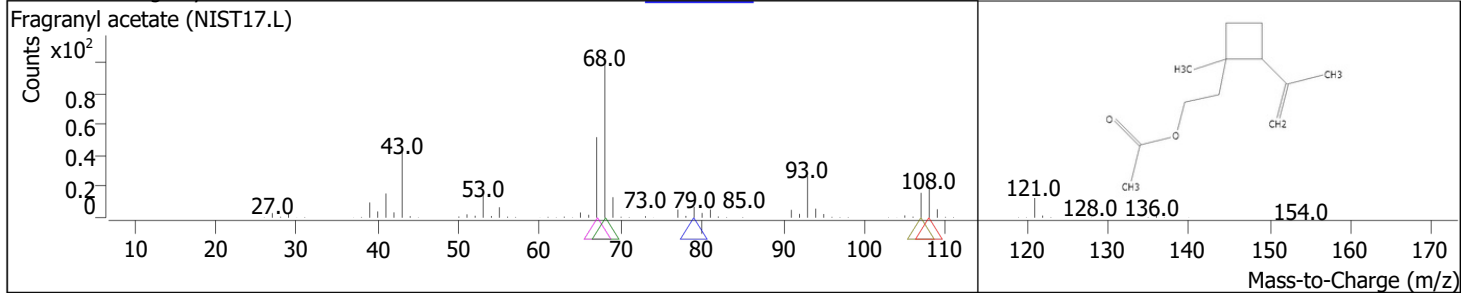
RT	Compound Name	CAS#	Formula	Area	Match Score	Sample	Sample
13.7130	Linalyl acetate	<a href="#">115-95-7</a>	C12H20O2	173632478	99.4	53.78	100.00



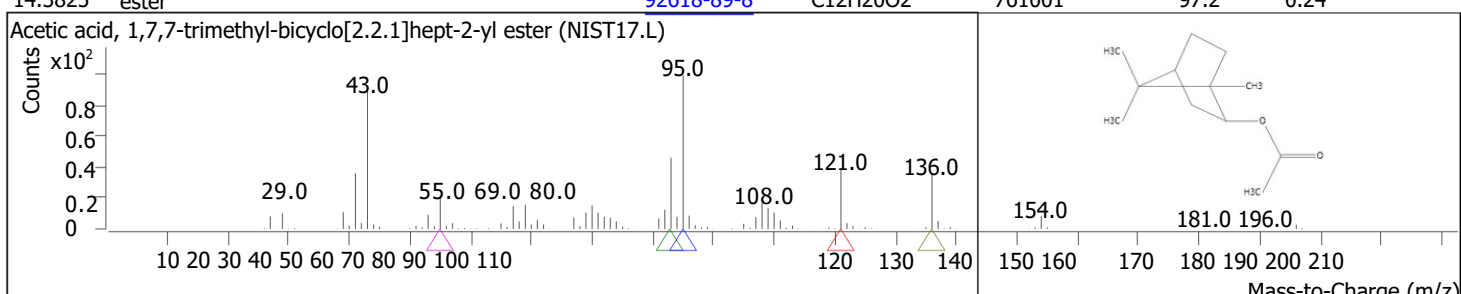
RT	Compound Name	CAS#	Formula	Area	Match Score	Sample	Sample
14.0964	1-Cyclohexene-1-carboxaldehyde, 4-(1-methylethyl)-	<a href="#">21391-98-0</a>	C10H16O	29901	79.3	0.01	0.02



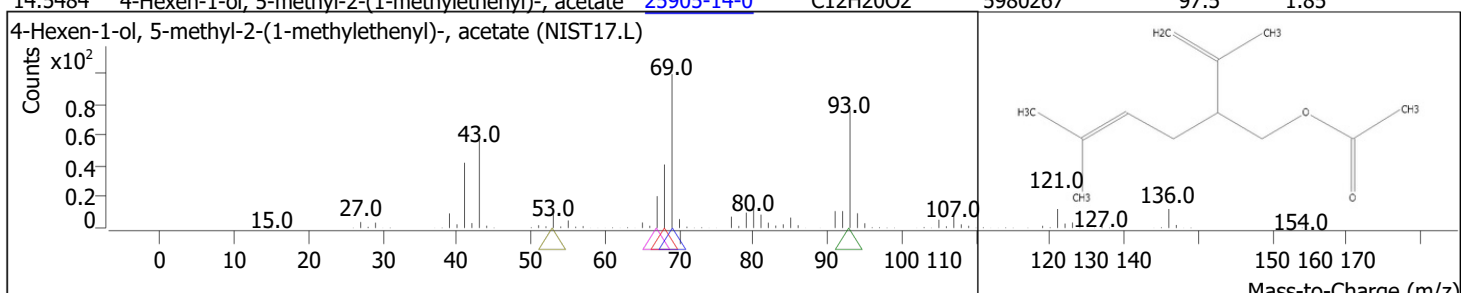
RT	Compound Name	CAS#	Formula	Area	Match Score	Sample	Sample
14.2222	Fragranyl acetate	<a href="#">51117-22-7</a>	C12H20O2	18866	71.6	0.01	0.01



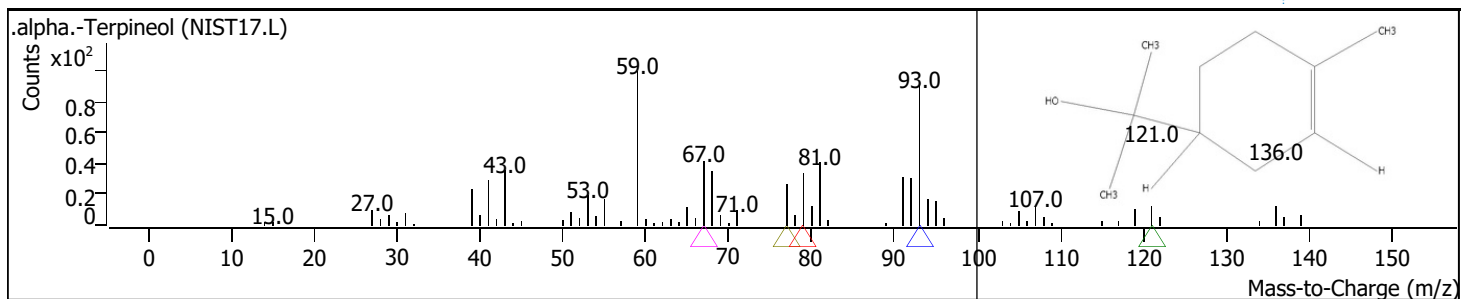
RT	Compound Name	CAS#	Formula	Area	Match Score	Sample	Sample
14.3825	Acetic acid, 1,7,7-trimethyl-bicyclo[2.2.1]hept-2-yl ester	<a href="#">92618-89-8</a>	C12H20O2	761001	97.2	0.24	0.44



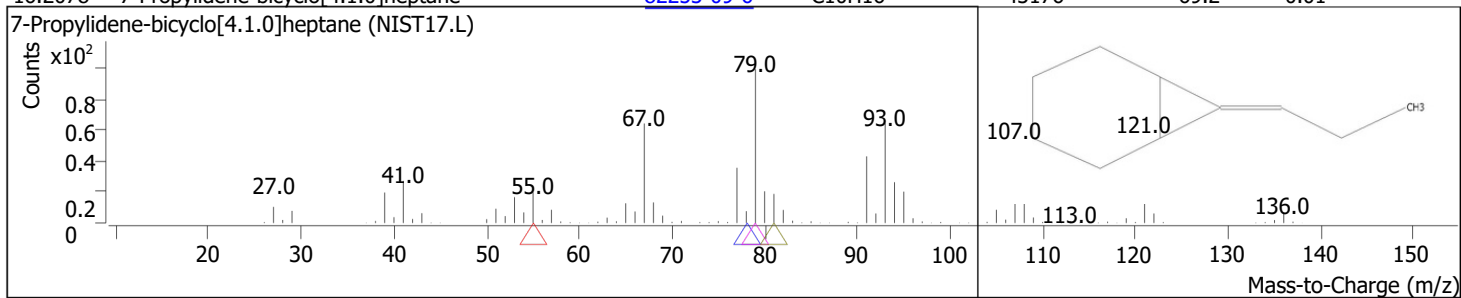
RT	Compound Name	CAS#	Formula	Area	Match Score	Sample	Sample
14.5484	4-Hexen-1-ol, 5-methyl-2-(1-methylethenyl)-, acetate	<a href="#">25905-14-0</a>	C12H20O2	5980267	97.5	1.85	3.44



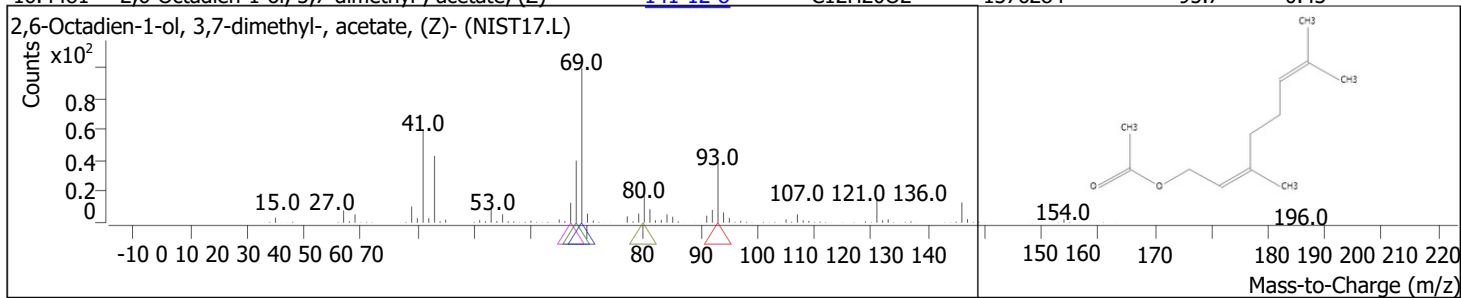
RT	Compound Name	CAS#	Formula	Area	Match Score	Sample	Sample
16.0419	.alpha.-Terpineol	<a href="#">98-55-5</a>	C10H18O	73430	87.4	0.02	0.04



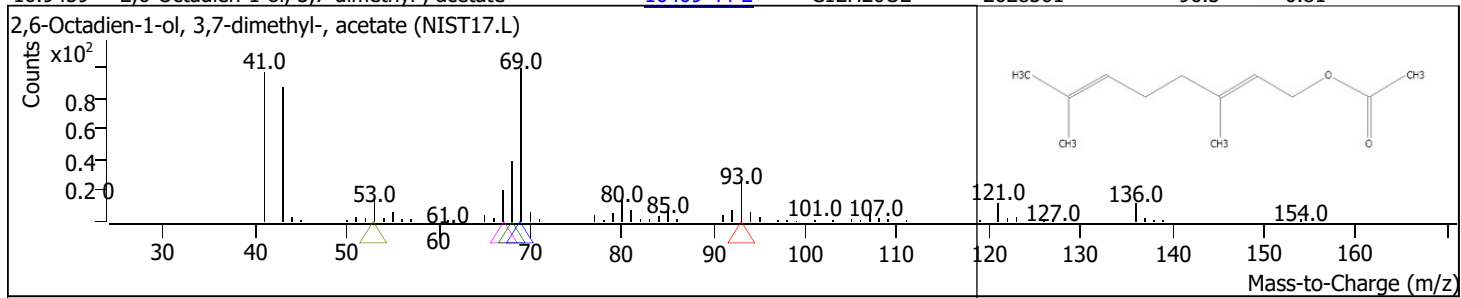
RT	Compound Name	CAS#	Formula	Area	Match Score	Sample	Sample
16.2078	7-Propylidene-bicyclo[4.1.0]heptane	<a href="#">82253-09-6</a>	C10H16	43176	69.2	0.01	0.02



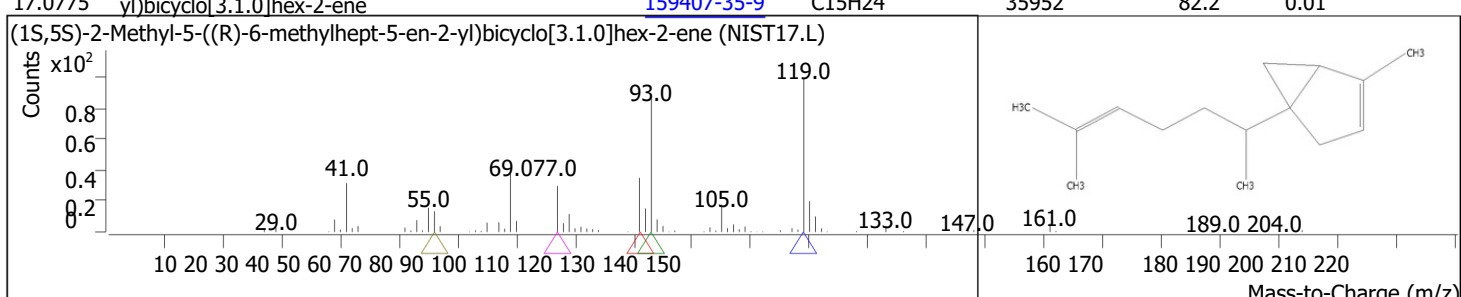
RT	Compound Name	CAS#	Formula	Area	Match Score	Sample	Sample
16.4481	2,6-Octadien-1-ol, 3,7-dimethyl-, acetate, (Z)-	<a href="#">141-12-8</a>	C12H20O2	1376284	95.7	0.43	0.79



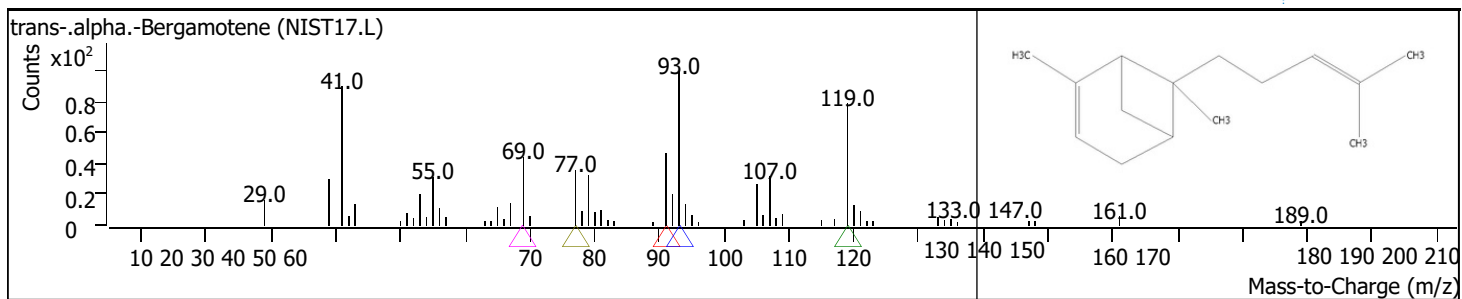
RT	Compound Name	CAS#	Formula	Area	Match Score	Sample	Sample
16.9459	2,6-Octadien-1-ol, 3,7-dimethyl-, acetate	<a href="#">16409-44-2</a>	C12H20O2	2628561	96.5	0.81	1.51



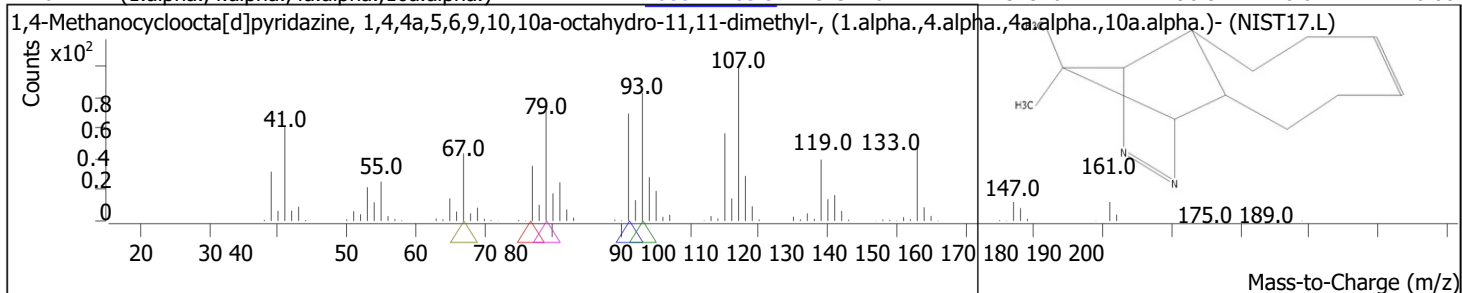
RT	Compound Name	CAS#	Formula	Area	Match Score	Sample	Sample
17.0775	(1S,5S)-2-Methyl-5-((R)-6-methylhept-5-en-2-yl)bicyclo[3.1.0]hex-2-ene	<a href="#">159407-35-9</a>	C15H24	35952	82.2	0.01	0.02



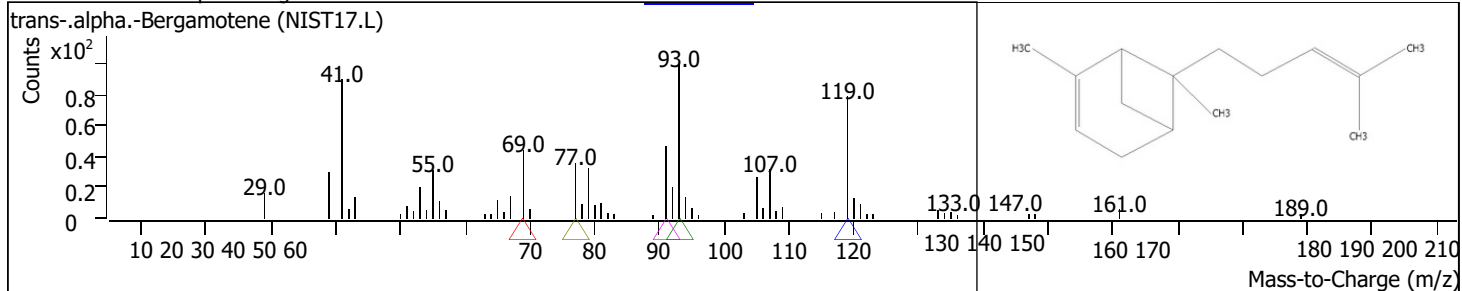
RT	Compound Name	CAS#	Formula	Area	Match Score	Sample	Sample
17.4781	trans-.alpha.-Bergamotene	<a href="#">13474-59-4</a>	C15H24	82530	89.1	0.03	0.05



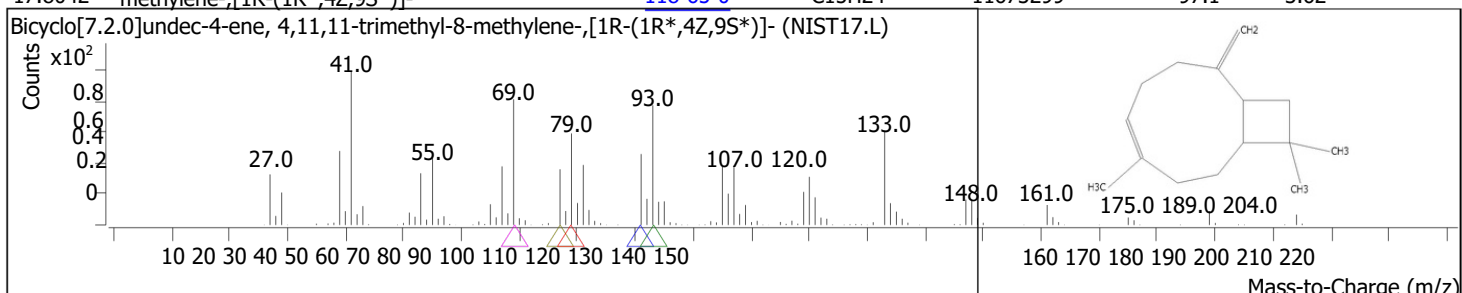
RT	Compound Name	CAS#	Formula	Area	Match Score	Sample	Sample
17.6211	1,4-Methanocycloocta[d]pyridazine, 1,4,4a,5,6,9,10,10a-octahydro-11,11-dimethyl-, (1.alpha.,4.alpha.,4a.alpha.,10a.alpha.)-	<a href="#">1000221-85-9</a>	C13H20N2	131316	90.3	0.04	0.08



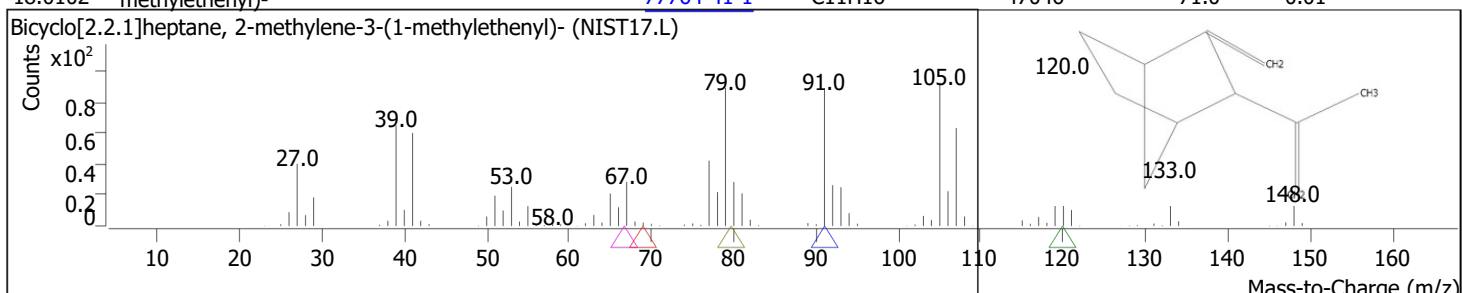
RT	Compound Name	CAS#	Formula	Area	Match Score	Sample	Sample
17.7070	trans- $\alpha$ -Bergamotene	<a href="#">13474-59-4</a>	C15H24	83941	90.6	0.03	0.05



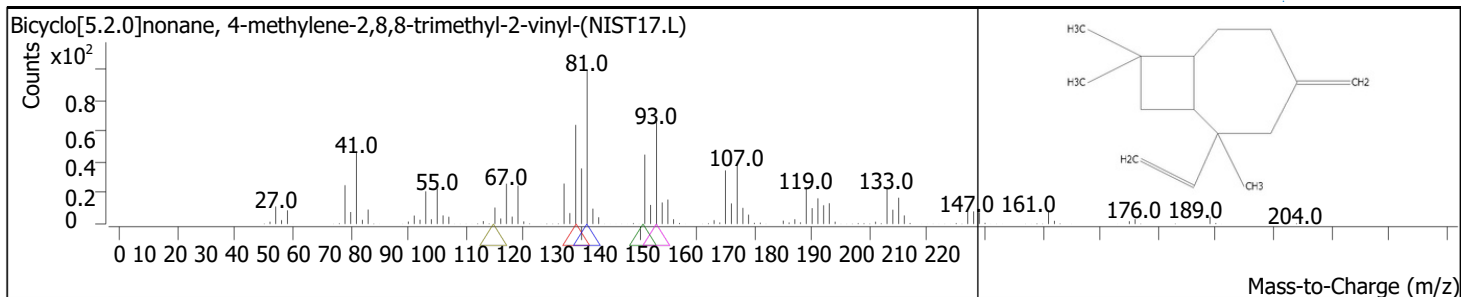
RT	Compound Name	CAS#	Formula	Area	Match Score	Sample	Sample
17.8042	Bicyclo[7.2.0]undec-4-ene, 4,11,11-trimethyl-8-methylene-, [1R-(1R*,4Z,9S*)]-	<a href="#">118-65-0</a>	C15H24	11673299	97.1	3.62	6.72



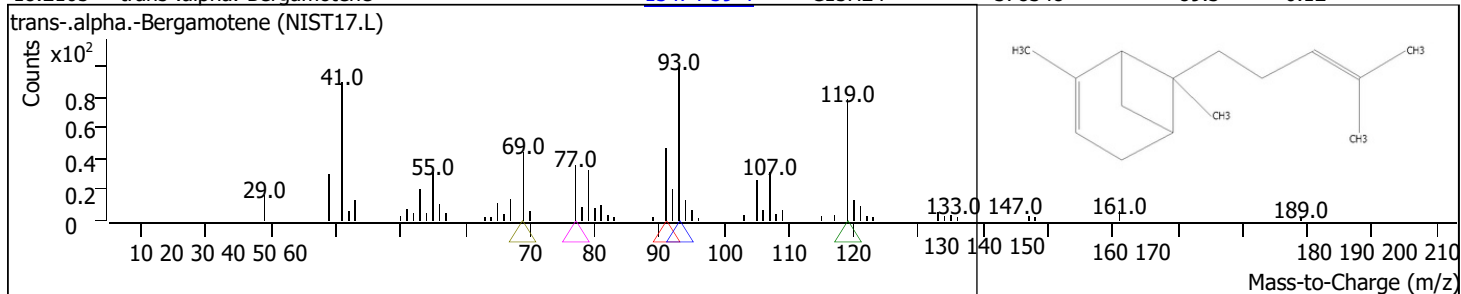
RT	Compound Name	CAS#	Formula	Area	Match Score	Sample	Sample
18.0102	Bicyclo[2.2.1]heptane, 2-methylene-3-(1-methylethenyl)-	<a href="#">77764-41-1</a>	C11H16	47046	71.0	0.01	0.03



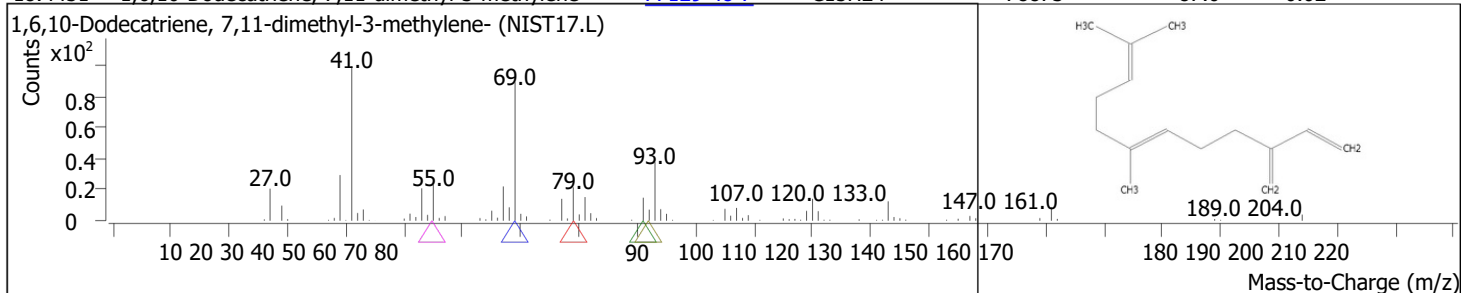
RT	Compound Name	CAS#	Formula	Area	Match Score	Sample	Sample
18.0903	Bicyclo[5.2.0]nonane, 4-methylene-2,8,8-trimethyl-2-vinyl-	<a href="#">1000159-38-2</a>	C15H24	54891	77.7	0.02	0.03



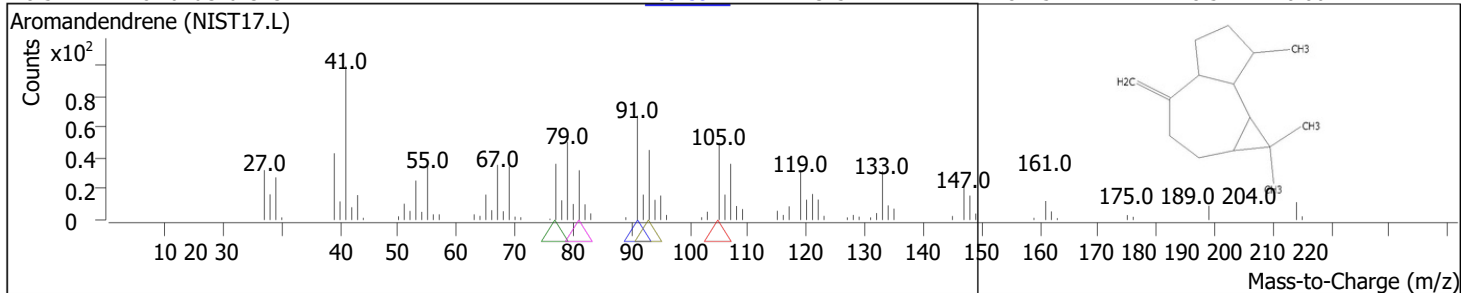
RT	Compound Name	CAS#	Formula	Area	Match Score	Sample	Sample
18.2105	trans- $\alpha$ -Bergamotene	<a href="#">13474-59-4</a>	C <sub>15</sub> H <sub>24</sub>	378348	89.3	0.12	0.22



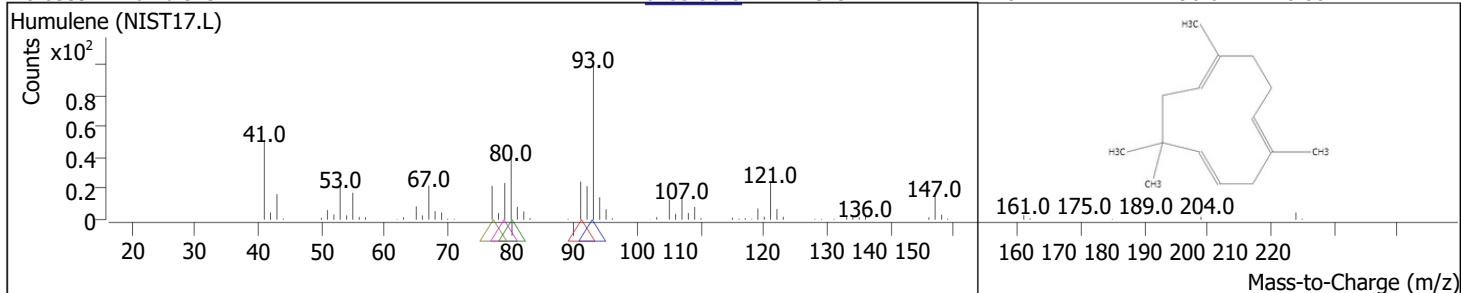
RT	Compound Name	CAS#	Formula	Area	Match Score	Sample	Sample
18.4451	1,6,10-Dodecatriene, 7,11-dimethyl-3-methylene-	<a href="#">77129-48-7</a>	C <sub>15</sub> H <sub>24</sub>	78873	87.0	0.02	0.05



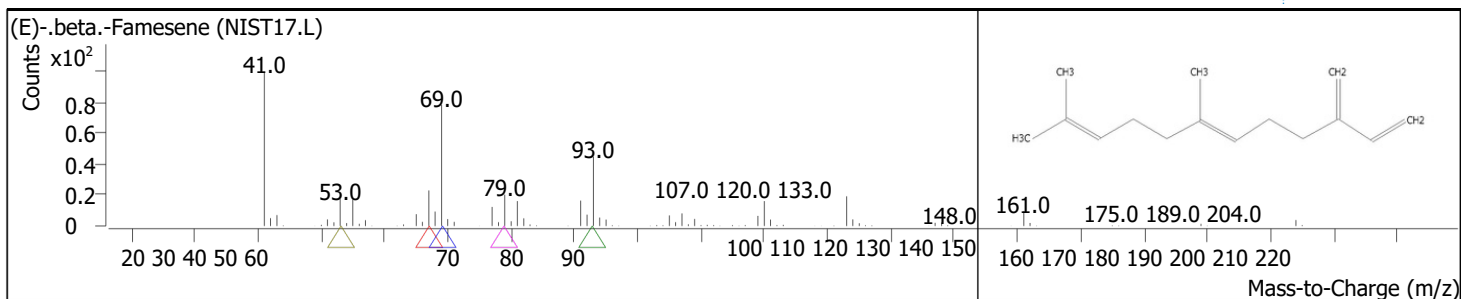
RT	Compound Name	CAS#	Formula	Area	Match Score	Sample	Sample
18.5424	Aromandendrene	<a href="#">489-39-4</a>	C <sub>15</sub> H <sub>24</sub>	184752	78.5	0.06	0.11



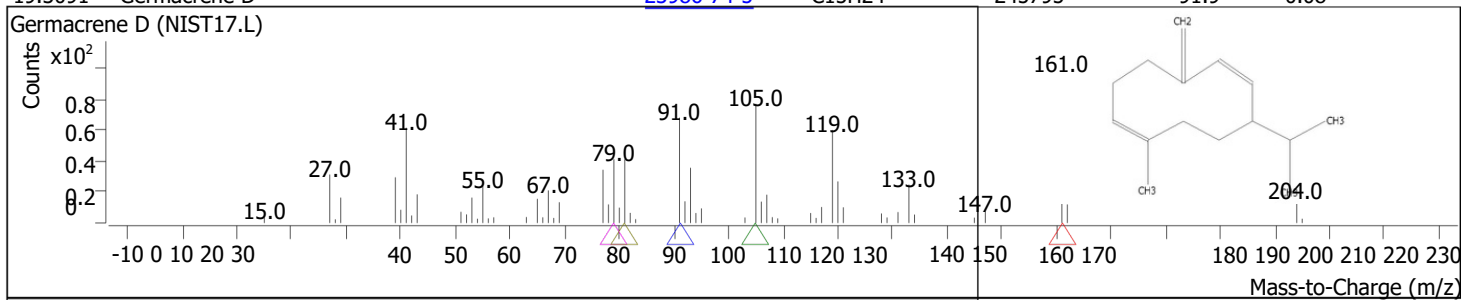
RT	Compound Name	CAS#	Formula	Area	Match Score	Sample	Sample
18.6339	Humulene	<a href="#">6753-98-6</a>	C <sub>15</sub> H <sub>24</sub>	254414	90.6	0.08	0.15



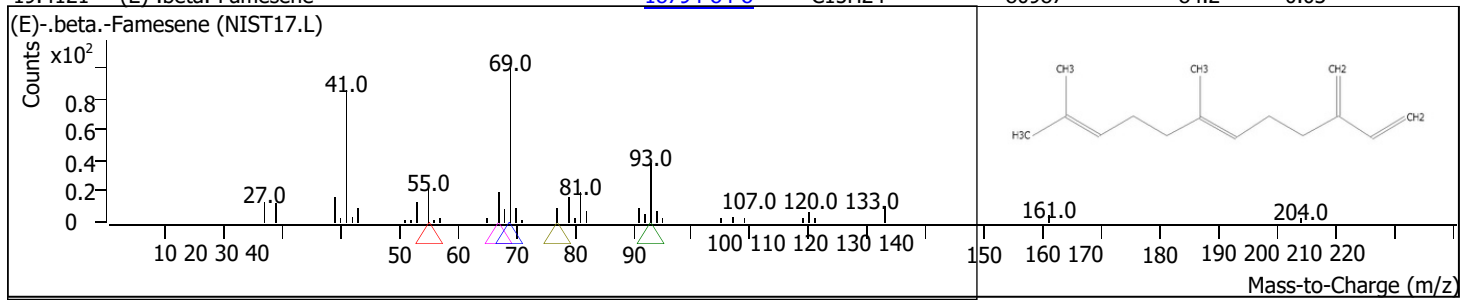
RT	Compound Name	CAS#	Formula	Area	Match Score	Sample	Sample
18.7484	(E)- $\beta$ -Famesene	<a href="#">18794-84-8</a>	C <sub>15</sub> H <sub>24</sub>	1726866	96.7	0.53	0.99



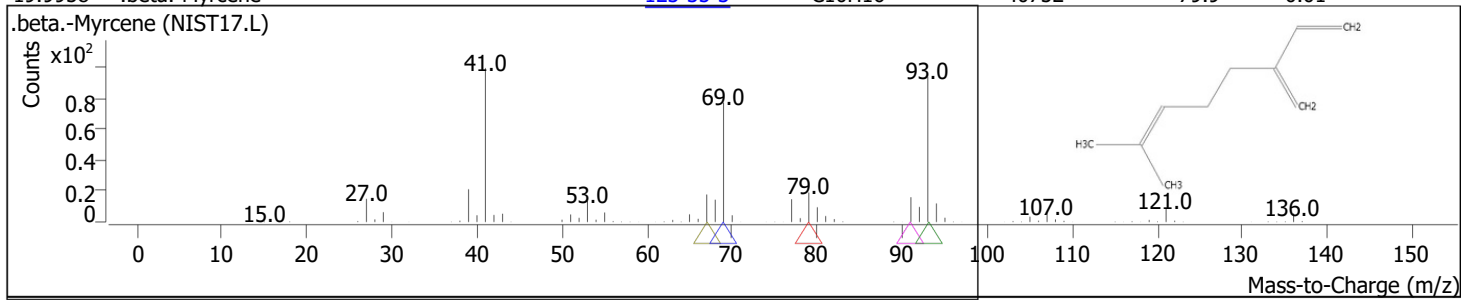
RT	Compound Name	CAS#	Formula	Area	Match Score	Sample	Sample
19.3091	Germacrene D	<a href="#">23986-74-5</a>	C15H24	245795	91.9	0.08	0.14



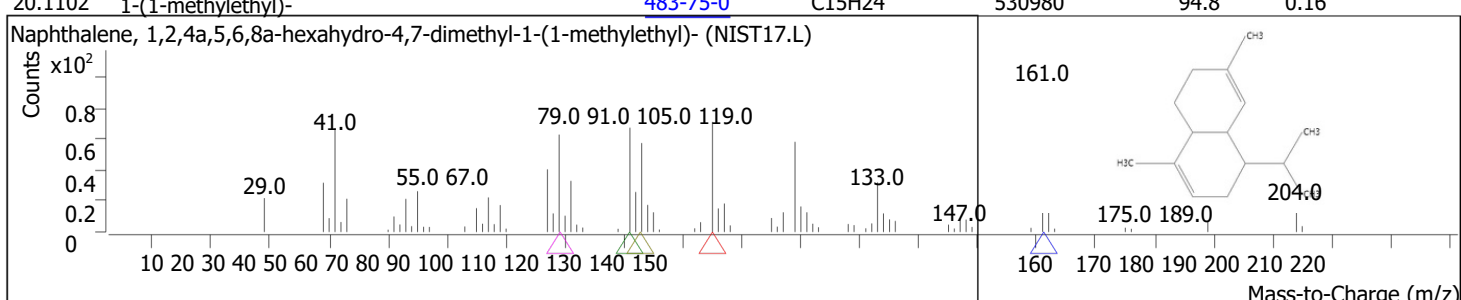
RT	Compound Name	CAS#	Formula	Area	Match Score	Sample	Sample
19.4121	(E)-.beta.-Famesene	<a href="#">18794-84-8</a>	C15H24	80987	84.2	0.03	0.05



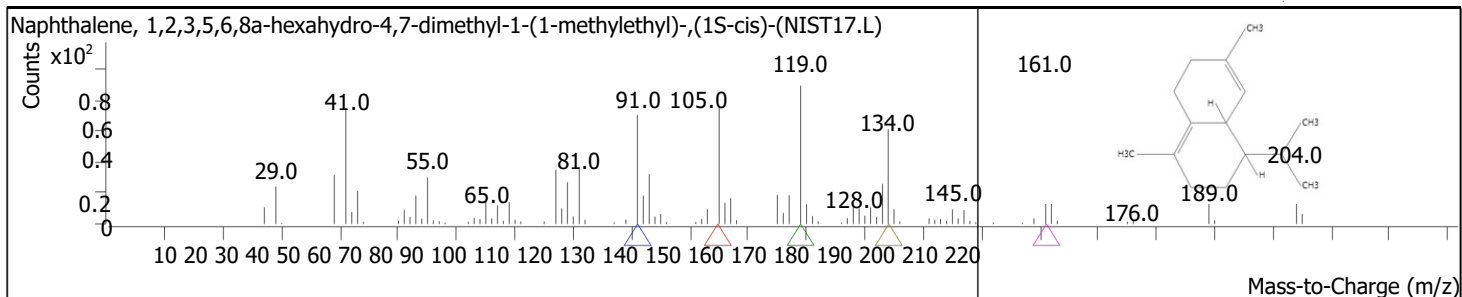
RT	Compound Name	CAS#	Formula	Area	Match Score	Sample	Sample
19.9958	.beta.-Myrcene	<a href="#">123-35-3</a>	C10H16	40752	79.9	0.01	0.02



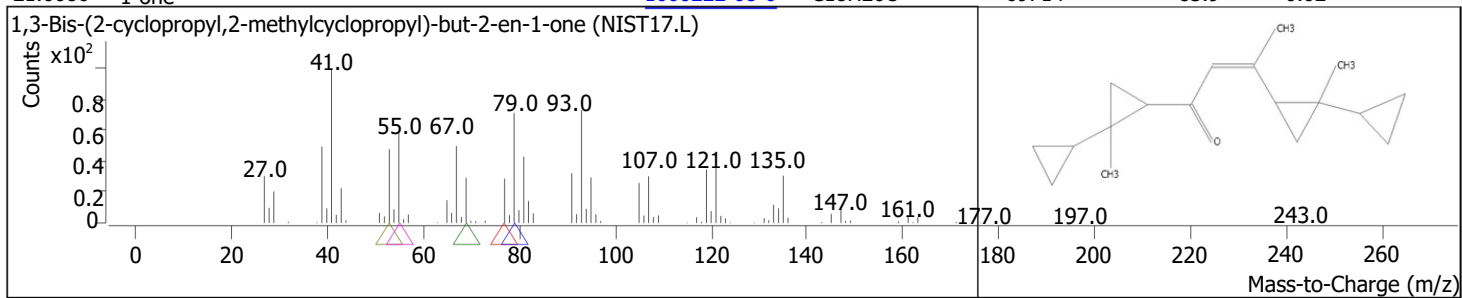
RT	Compound Name	CAS#	Formula	Area	Match Score	Sample	Sample
20.1102	Naphthalene, 1,2,4a,5,6,8a-hexahydro-4,7-dimethyl-1-(1-methylethyl)-	<a href="#">483-75-0</a>	C15H24	530980	94.8	0.16	0.31



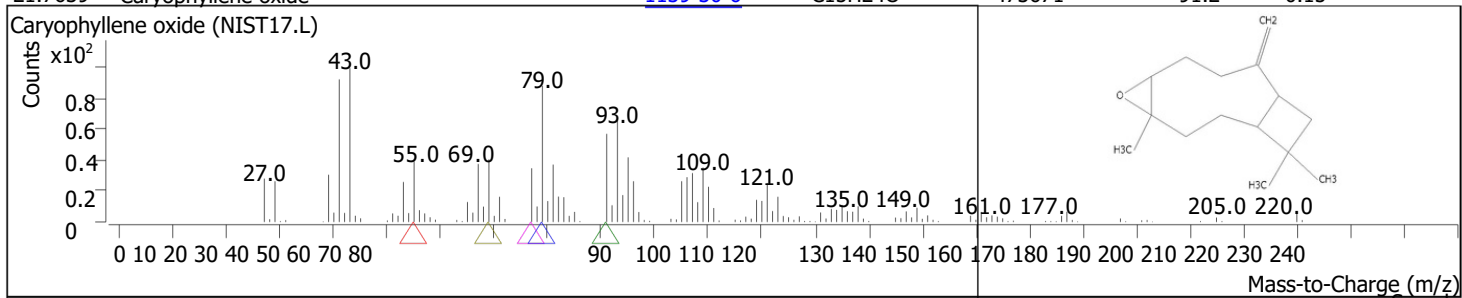
RT	Compound Name	CAS#	Formula	Area	Match Score	Sample	Sample
20.3391	Naphthalene, 1,2,3,5,6,8a-hexahydro-4,7-dimethyl-1-(1-methylethyl)-, (1S-cis)-	<a href="#">483-76-1</a>	C15H24	115477	82.1	0.04	0.07



RT	Compound Name	CAS#	Formula	Area	Match Score	Sample	Sample
21.0086	1,3-Bis-(2-cyclopropyl,2-methylcyclopropyl)-but-2-en-1-one	<a href="#">1000222-08-6</a>	C18H26O	69714	83.9	0.02	0.04



RT	Compound Name	CAS#	Formula	Area	Match Score	Sample	Sample
21.7639	Caryophyllene oxide	<a href="#">1139-30-6</a>	C15H24O	473671	91.2	0.15	0.27



RT	Compound Name	CAS#	Formula	Area	Match Score	Sample	Sample
23.3203	1H-Cyclopenta[1,3]cyclopropa[1,2]benzene, octahydro-7-methyl-3-methylene-4-(1-methylethyl)-, [3aS-(3a.alpha.,3b.beta.,4.beta.,7.alpha.,7aS*)]-	<a href="#">13744-15-5</a>	C15H24	206288	88.7	0.06	0.12

