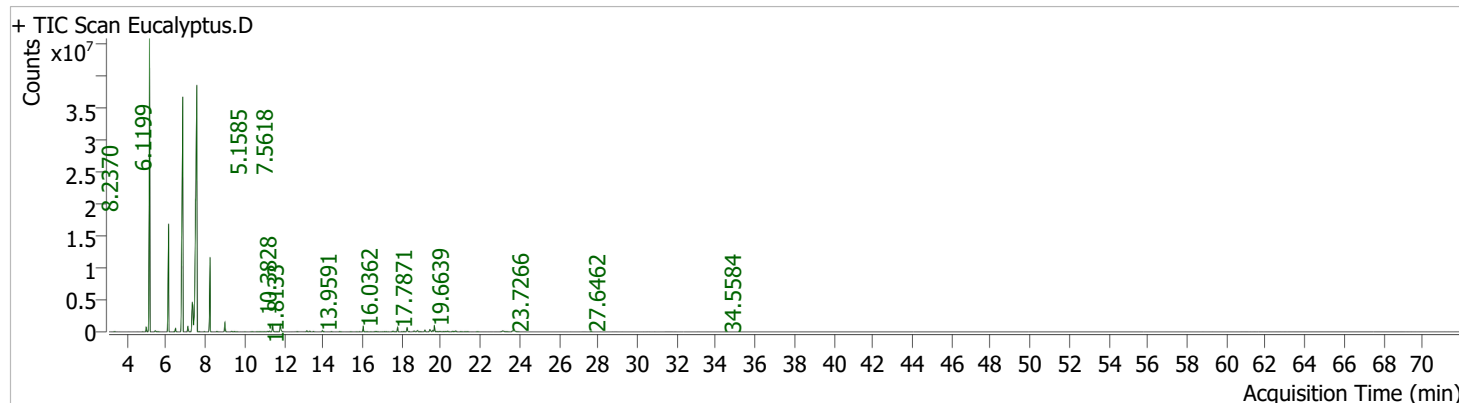


Batch	Path	D:\MassHunter\Data\External\New folder			
Analysis File Name	NEW2.uaf				
Analyst Name	Basab-GCMS				
Analysis Time	13-03-2026 10:20:47				
Data File Name	Eucalyptus.D	Data Path Name	D:\MassHunter\Data\External\New folder		
Sample Name Acq	EUC-DHL-2508 / PEPPERWOOD	Sample Type	Sample		
Method File Acq	Bio Oil pyrolysis4_new	Acq Method Path	D:\MassHunter\GCMS\methods\		
Time Instrument	10-03-2026 18:06:55	Operator			
Name	GCMS	Dilution	1		

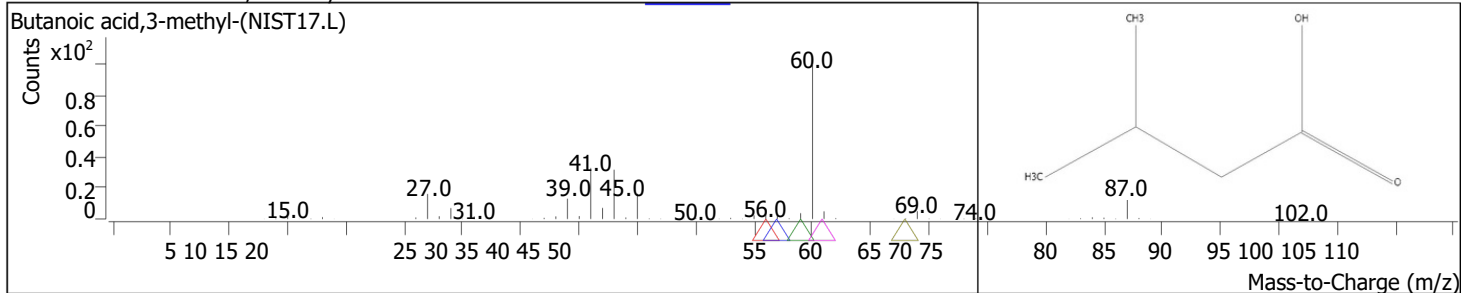


RT	Compound Name	Butanoic acid, 3-methyl-	CAS#	Formula	Area	Match Score	Sample	Sample
3.4076	Cyclopropene, 1-methyl-3-(2-methylcyclopropyl)-		2 61142-26-5	C5H10O2	82040	88.0	0.02	0.05
4.8095	Bicyclo[3.1.0]hex-2-ene, 2-methyl-5-(1-methylethyl)-		2867-05-2	C8H12	28069	79.7	0.01	0.02
4.9812	.alpha.-Pinene Camphene		80-56-8 79-	C10H16	1624723	96.6	0.32	0.97
5.1585	Bicyclo[3.1.0]hex-2-ene, methylethyl)-	4-methylene-1-(1-	92-5	C10H16	101829983	98.5	19.77	60.95
5.4447	.beta.-Pinene		36262-09-6	C10H16	640175	97.2	0.12	0.38
5.5820	5-Hepten-2-one, 6-methyl-		127-91-3	C10H14	65702	77.0	0.01	0.04
6.1199	.beta.-Myrcene		110-93-0	C10H16	38587498	99.0	7.49	23.10
6.3945	.alpha.-Phellandrene		123-35-3	C8H14O	38558	86.9	0.01	0.02
6.4746	Bicyclo[4.1.0]hept-2-ene, 3,7,7-trimethyl-, (1S-cis)-		99-83-2	C10H16	1362379	94.7	0.26	0.82
6.8466	p-Cymene		4497-92-1	C10H16	121442340	97.5	23.58	72.69
7.1098	Eucalyptol		99-87-6	C10H16	2268843	97.8	0.44	1.36
7.3444	trans-.beta.-Ocimene		470-82-6	C10H14	19861751	97.8	3.86	11.89
7.5618	1,3,7-Octatriene, 3,7-dimethyl-		3779-61-1	C10H18O	167067366	99.7	32.44	100.00
7.6762	.gamma.-Terpinene		502-99-8	C10H16	76768	94.3	0.01	0.05
7.9452	trans-Linalool oxide (furanoid)		99-85-4	C10H16	83188	93.2	0.02	0.05
8.2370	Cyclohexene, 4-methyl-3-(1-methylethylidene)-		34995-77-2	C10H16	26997105	98.7	5.24	16.16
8.5803	Linalool		99805-90-0	C10H18O2	194897	92.5	0.04	0.12
8.9923	Butanoic acid, 3-methyl-, 3-methylbutyl ester		78-70-6	C10H16	3246339	97.1	0.63	1.94
9.3299	2,6-Dimethyl-1,3,5,7-octatetraene, E,E-		659-70-1	C10H18O	286086	94.1	0.06	0.17
9.4844	.alpha.-Campholenal Bicyclo[3.1.0]hex-2-ene, 4-		460-01-5	C10H20O2	132072	94.0	0.03	0.08
9.6160	methylene-1-(1-methylethyl)-		4501-58-0	C10H14	38348	84.7	0.01	0.02
10.0166	Linalool		36262-09-6	C10H16O	15086	80.8	0.00	0.01
10.3828	Cyclopropane, hexylidene-		78-70-6	C10H14	64456	83.5	0.01	0.04
10.6059	Methoxyacetic acid, cyclohexyl ester		91509-06-7	C10H18O	25927	72.2	0.01	0.02
10.6860	2,3-Diazabicyclo[2.2.1]hept-2-ene, 4-methyl-1-(pent-4-en-1-yl)-		1000282-69-4	C9H16	29216	68.9	0.01	0.02
10.8119	2,4-Hexadiene, 2,5-dimethyl-		150667-99-5	C9H16O3	76952	69.9	0.01	0.05
11.0065	2,4-Hexadiene, 2,5-dimethyl-		764-13-6	C11H18N2	70460	72.0	0.01	0.04
11.1667	Terpinen-4-ol		764-13-6	C8H14	248123	87.4	0.05	0.15
11.2582			562-74-3	C8H14	308283	89.6	0.06	0.18
11.4242				C10H18O	3042906	95.9	0.59	1.82

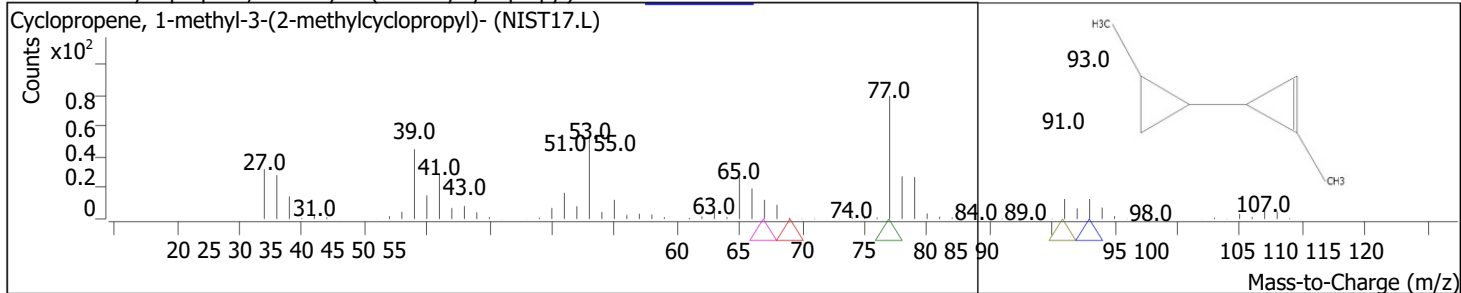
RT	Compound Name	CAS#	Formula	Area	Match Score	Sample	Sample
11.5958	2-Pentenitrile, 4,4-dimethyl-	39168-14-4	C7H11N	50746	72.8	0.01	0.03
11.6645	Cyclohexanone, 2-(2-nitro-2-propenyl)-	78551-08-3	C9H13NO3	43487	60.8	0.01	0.03
11.8133	.alpha.-Terpineol	98-55-5	C10H18O	3864904	97.7	0.75	2.31
12.6716	3-Hexen-2-one, 3,4-dimethyl-, (Z)-	20685-45-4	C8H14O	29962	67.3	0.01	0.02
13.1637	Neral	106-26-3	C10H16O	415893	96.0	0.08	0.25
13.3182	2-Cyclohexen-1-one, 2-methyl-5-(1-methylethyl)-, (S)-	499-71-8	C10H16O	264291	93.6	0.05	0.16
13.5013	2-Cyclohexen-1-one, 3-methyl-6-(1-methylethyl)-, 2,6-	89-81-6	C10H16O	136154	93.4	0.03	0.08
13.9591	Octadienal, 3,7-dimethyl-, (E)-	27-5	C10H16O	538042	95.7	0.10	0.32
14.4225	1-[(.alpha.-(1-Adamantyl)benzylidene]thiosemicarbazide	1000222-83-3	C18H23N3S	84018	69.3	0.02	0.05
14.8231	Phenol, 2-ethyl-4,5-dimethyl-	2219-78-5	C10H14O	97178	90.1	0.02	0.06
15.3781	2,6-Octadienoic acid, 3,7-dimethyl-, methyl ester	2349-14-6	C11H18O2	34298	64.7	0.01	0.02
15.7100	Santolina triene	2153-66-4	C10H16	23668	70.3	0.00	0.01
15.8416	2-Oxabicyclo[2.2.2]octan-6-ol, 1,3,3-trimethyl-, acetate	57709-95-2	C12H20O3	52853	84.3	0.01	0.03
16.0362	.alpha.-Terpineol	98-55-5	C10H18O	2074825	94.0	0.40	1.24
16.2536	Phenol, 2-methoxy-4-(2-propenyl)-, acetate	93-28-7	C12H14O3	89322	72.5	0.02	0.05
16.4081	Cyclohexene, 5,6-diethenyl-1-methyl-	61141-78-4	C11H16	26793	67.5	0.01	0.02
16.6141	Germacrene D	23986-74-5	C15H24	60937	91.1	0.01	0.04
16.6885	Copaene	3856-25-5	C15H24	287481	91.5	0.06	0.17
16.8086	exo-7-(trans-1-Propenyl)bicyclo[4.2.0]oct-1(2)-ene	107983-42-6	C11H16	24258	69.0	0.00	0.01
16.9288	Geranyl isovalerate	109-20-6	C15H26O2	17860	75.9	0.00	0.01
17.0203	5,9-Tetradecadiyne Cyclohexane, 1-ethenyl-1-methyl-	51255-61-9	C14H22	21810	70.8	0.00	0.01
17.1119	2,4-bis(1-methylethenyl)-	110823-68-2	C15H24	65847	83.1	0.01	0.04
17.2092	1,4-Methanocycloocta[d]pyridazine, 1,4,4a,5,6,9,10,10a-octahydro-11,11-dimethyl-, (1.alpha.,4.alpha.,4a.alpha.,10a.alpha.)-	1000221-85-9	C13H20N2	70972	80.0	0.01	0.04
17.3064	Methyl trans-2-(3-cyclopropyl-7-norcaranyl)acetate	1000223-15-6	C13H20O2	18723	68.2	0.00	0.01
17.4838	(Z,Z)-.alpha.-Farnesene 1H-Cycloprop[e]azulene, 1a,2,3,4,4a,5,6,7b-	1000293-03-1	C15H24	41674	81.4	0.01	0.02
17.5525	octahydro-1,1,4,7-tetramethyl-, [1aR-(1a.alpha.,4.alpha.,4a.beta.,7b.alpha.)]-	489-40-7	C15H24	411678	93.0	0.08	0.25
17.6955	Cyclopenten-1-one, 3-methyl-2-(2,4-pentadienyl)-, (Z)-	22610-78-3 118-85-0	C11H14O	36489	68.0	0.01	0.02
17.7871	Bicyclo[7.2.0]undec-4-ene, 4,11,11-trimethyl-8-methylene-[1R-(1R*,4Z,9S*)]-	71673-32-0	C15H24	1758207	94.9	0.34	1.05
17.9988	1,11-Hexadecadiyne	1000151-74-7	C16H26	61588	81.8	0.01	0.04
18.0904	Tetracyclo[6.1.0.0(2,4).0(5,7)]nonane, 3,3,6,6,9,9-hexamethyl-, cis,cis,trans--	489-39-4	C15H24	101060	85.8	0.02	0.06
18.1533	Aromandendrene	489-39-4	C15H24	56346	71.0	0.01	0.03
18.2735	Aromandendrene 1,4-Methano-1H-indene, octahydro-4-methyl-8-methylene-7-(1-methylethyl)-, [1S-(1.alpha.,3a.beta.,4.alpha.,7.alpha.,7a.beta.)]-	1000293-03-1	C15H24	1799983	95.9	0.35	1.08
18.3765	Humulene	3650-28-0	C15H24	32663	76.0	0.01	0.02
18.6340	Aromandendrene	6753-98-6	C15H24	332966	87.9	0.06	0.20
18.7999	(-)-Aristolene	489-39-4	C15H24	708940	96.0	0.14	0.42
18.9201	(4S,4aR,6R)-4,4a-Dimethyl-6-(prop-1-en-2-yl)-1,2,3,4,4a,5,6,7-octahydronaphthalene	6831-16-9	C15H24	75345	82.3	0.01	0.05
19.0231	.alpha.-Guaiene	54868-40-5	C15H24	19705	75.1	0.00	0.01
19.1776	Naphthalene, 1,2,3,4,4a,5,6,8a-octahydro-4a,8-dimethyl-2-(1-methylethenyl)-, [2R-(2.alpha.,4a.alpha.,8a.beta.)]-	3691-12-1	C15H24	780633	90.6	0.15	0.47
19.4350	Naphthalene, 2,3,4,4a,5,6-hexahydro-1,4a-dimethyl-7-(1-methylethyl)-	473-13-3	C15H24	1365222	95.9	0.27	0.82
19.5724	Naphthalene, 1,2,3,4,4a,5,6,8a-octahydro-4a,8-dimethyl-2-(1-methylethenyl)-, [2R-(2.alpha.,4a.alpha.,8a.beta.)]-	473-13-2	C15H24	609572	92.6	0.12	0.36
19.6639	.alpha.-Muurolole	473-13-2	C15H24	2579420	94.0	0.50	1.54
19.7784	.alpha.-Muurolole	10208-80-7	C15H24	240716	71.5	0.05	0.14

RT	Compound Name	CAS#	Formula	Area	Match Score	Sample	Sample
19.9271	Aromandendrene	489-39-4 123-123-3	C15H24	211073	90.0	0.04	0.13
19.9901	.beta.-Myrcene	35-3	C10H16	136654	79.6	0.03	0.08
20.1102	Germacrene D	23986-74-5	C15H24	147051	92.0	0.03	0.09
20.2533	1H-Cyclopropa[a]naphthalene, 1a,2,3,5,6,7,7a,7b-octahydro-1,1,7,7a-tetramethyl-, [1aR-(1a.alpha.,7.alpha.,7a.alpha.,7b.alpha.)]-	17334-55-3	C15H24	337031	90.3	0.07	0.20
20.3391	Naphthalene, 1,2,3,5,6,8a-hexahydro-4,7-dimethyl-1-(1-methylethyl)-, (1S-cis)-	483-76-1	C15H24	338427	91.4	0.07	0.20
20.5966	Aromandendrene	489-39-4	C15H24	316588	91.9	0.06	0.19
20.6710	.beta.-Guaiene	88-84-6	C15H24	225017	91.6	0.04	0.13
20.7511	Selina-3,7(11)-diene	6813-21-4	C15H24	476655	93.3	0.09	0.29
20.9914	Cyclohexanemethanol, 4-ethenyl-.alpha.,.alpha.,4-trimethyl-3-(1-methylethenyl)-, [1R-(1.alpha.,3.alpha.,4.beta.)]-	639-99-6	C15H26O	117677	79.9	0.02	0.07
21.2318	1,11-Hexadecadiyne	71673-32-0	C16H26	76390	74.3	0.01	0.05
21.3348	Nerolidol	142-50-7	C15H26O	104112	77.6	0.02	0.06
21.8326	1,4-Methanocycloocta[d]pyridazine, 1,4,4a,5,6,9,10,10a-octahydro-11,11-dimethyl-, (1.alpha.,4.alpha.,4a.alpha.,10a.alpha.)-	1000221-85-9	C13H20N2	73395	78.9	0.01	0.04
23.1429	Azulene, 1,2,3,5,6,7,8,8a-octahydro-1,4-dimethyl-7-(1-methylethenyl)-, [1S-(1.alpha.,7.alpha.,8a.beta.)]-	3691-11-0	C15H24	1029958	89.7	0.20	0.62
23.3432	cis-.alpha.-Bergamotene	18252-46-5	C15H24	114595	72.1	0.02	0.07
23.7266	2-(4a,8-Dimethyl-2,3,4,5,6,8a-hexahydro-1H-naphthalen-2-yl)propan-2-ol	1000411-50-1	C15H26O	1904033	90.9	0.37	1.14
27.6462	.alpha.-Phellandrene	99-83-2	C10H16	139104	93.6	0.03	0.08
34.5584	2-Methoxybenzoylformic acid, TMS	1000071-87-1	C12H16O4Si	36189	50.1	0.01	0.02

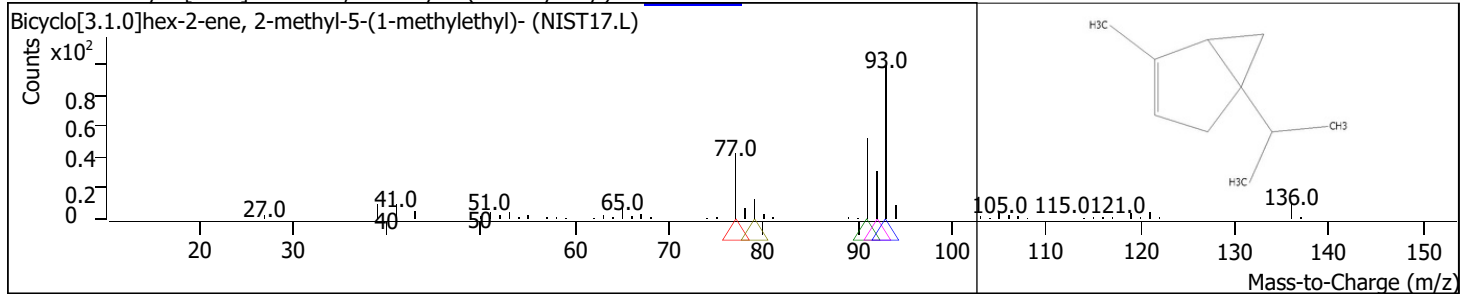
RT	Compound Name	CAS#	Formula	Area	Match Score	Sample	Sample
3.4076	Butanoic acid, 3-methyl-	503-74-2	C5H10O2	82040	88.0	0.02	0.05



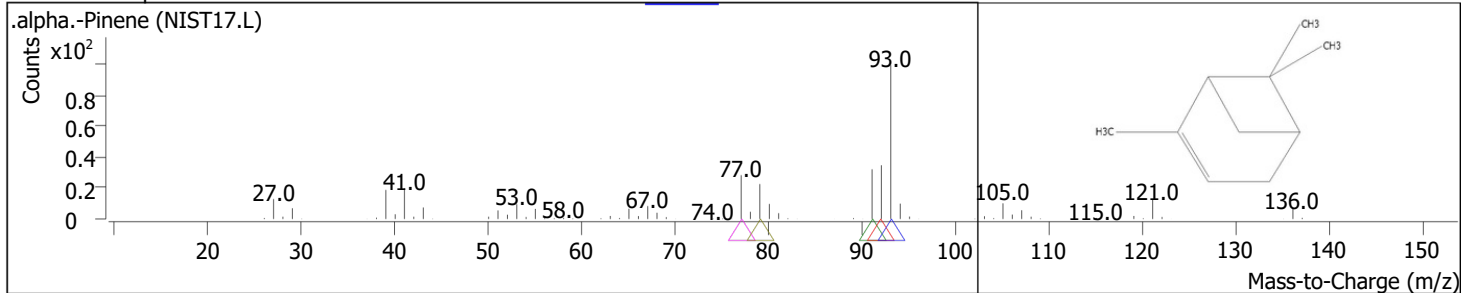
RT	Compound Name	CAS#	Formula	Area	Match Score	Sample	Sample
4.8095	Cyclopropene, 1-methyl-3-(2-methylcyclopropyl)-	61142-26-5	C8H12	28069	79.7	0.01	0.02



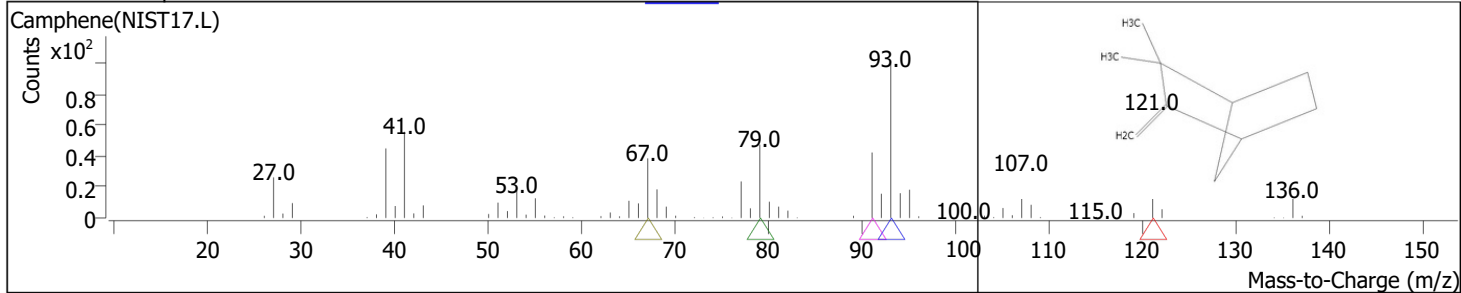
RT	Compound Name	CAS#	Formula	Area	Match Score	Sample	Sample
4.9812	Bicyclo[3.1.0]hex-2-ene, 2-methyl-5-(1-methylethyl)-	2867-05-2	C10H16	1624723	96.6	0.32	0.97



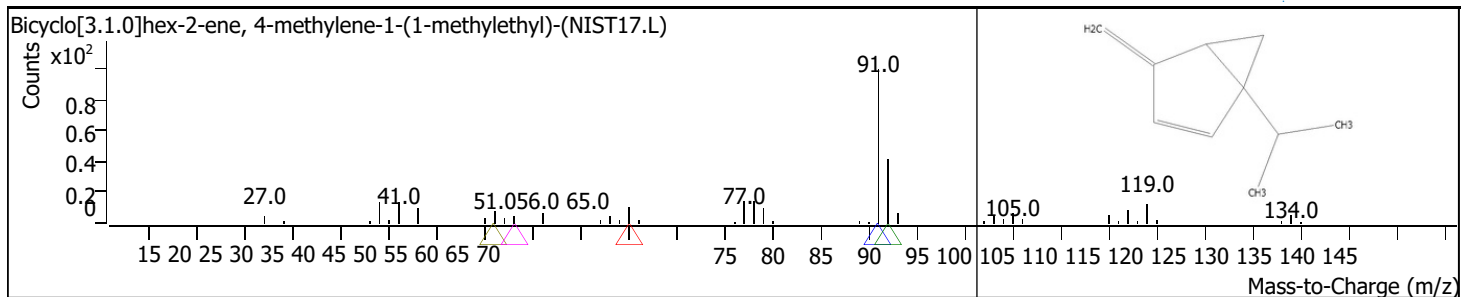
RT	Compound Name	CAS#	Formula	Area	Match Score	Sample	Sample
5.1585	.alpha.-Pinene	80-56-8	C10H16	101829983	98.5	19.77	60.95



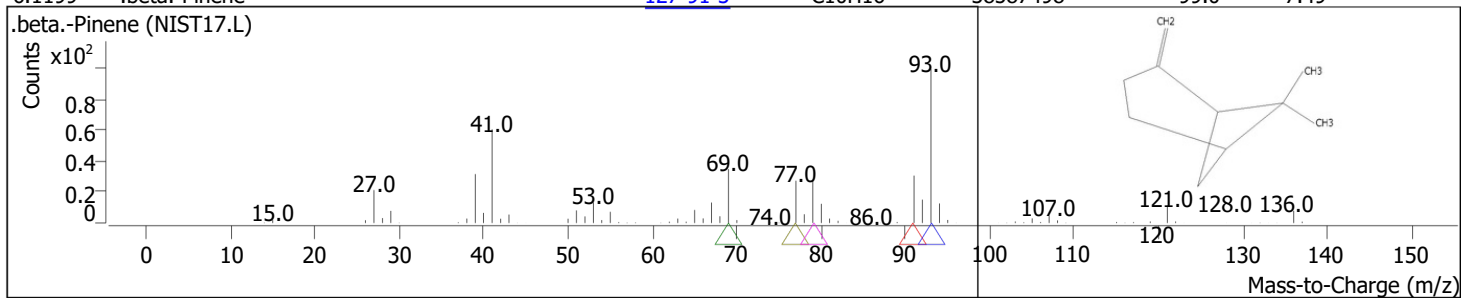
RT	Compound Name	CAS#	Formula	Area	Match Score	Sample	Sample
5.4447	Camphene	79-92-5	C10H16	640175	97.2	0.12	0.38



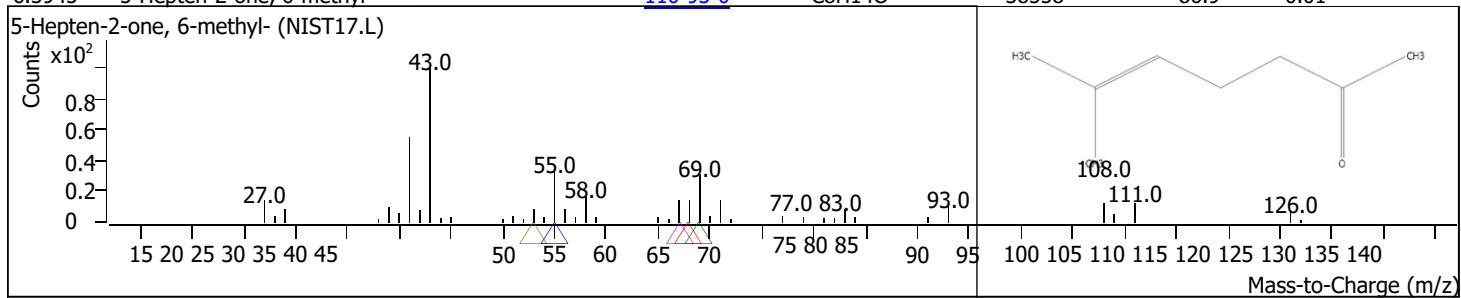
RT	Compound Name	CAS#	Formula	Area	Match Score	Sample	Sample
5.5820	Bicyclo[3.1.0]hex-2-ene, 4-methylene-1-(1-methylethyl)-	36262-09-6	C10H14	65702	77.0	0.01	0.04



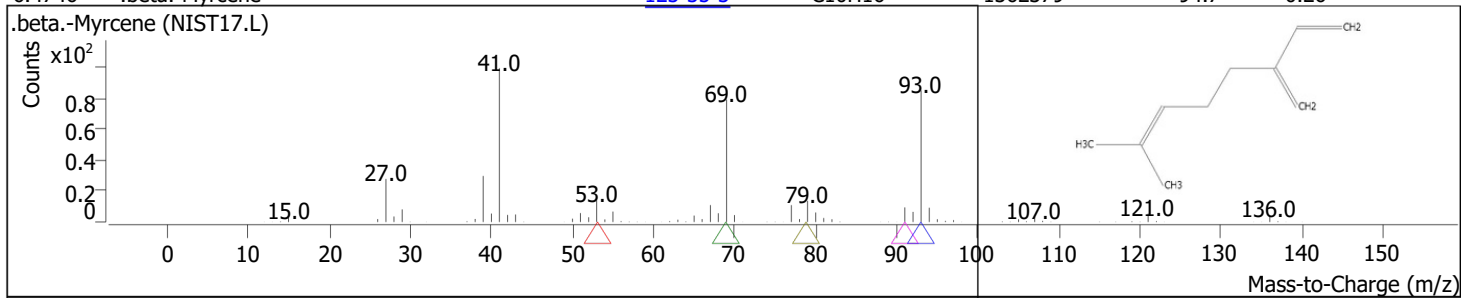
RT	Compound Name	CAS#	Formula	Area	Match Score	Sample	Sample
6.1199	.beta.-Pinene	127-91-3	C10H16	38587498	99.0	7.49	23.10



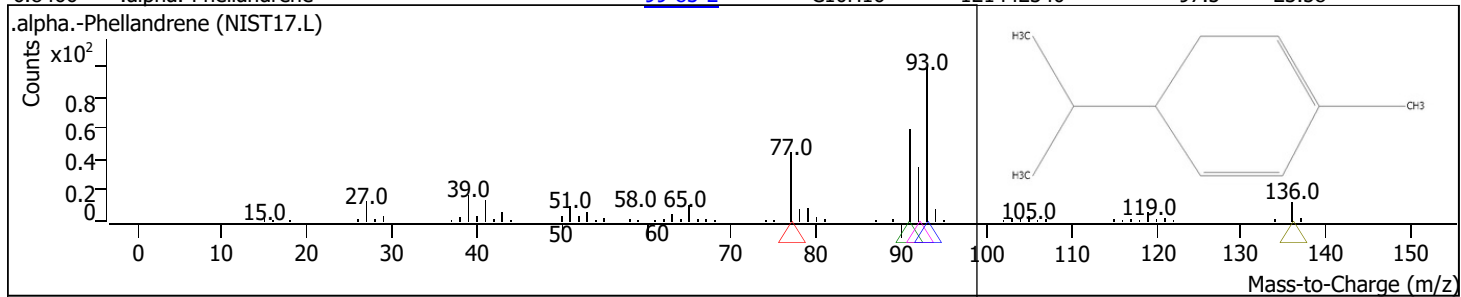
RT	Compound Name	CAS#	Formula	Area	Match Score	Sample	Sample
6.3945	5-Hepten-2-one, 6-methyl-	110-93-0	C8H14O	38558	86.9	0.01	0.02



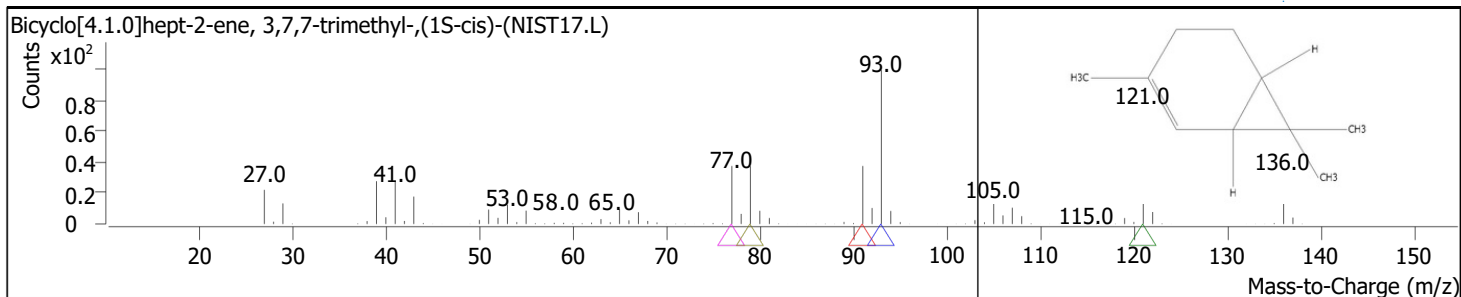
RT	Compound Name	CAS#	Formula	Area	Match Score	Sample	Sample
6.4746	.beta.-Myrcene	123-35-3	C10H16	1362379	94.7	0.26	0.82



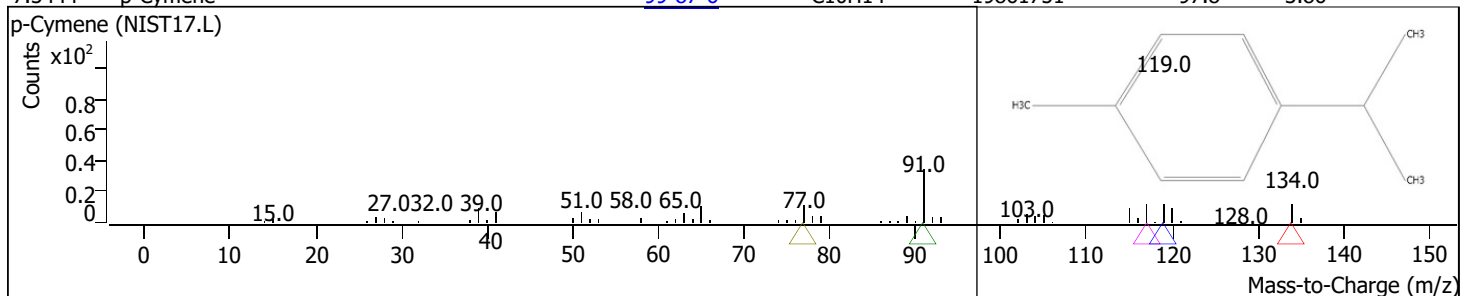
RT	Compound Name	CAS#	Formula	Area	Match Score	Sample	Sample
6.8466	.alpha.-Phellandrene	99-83-2	C10H16	121442340	97.5	23.58	72.69



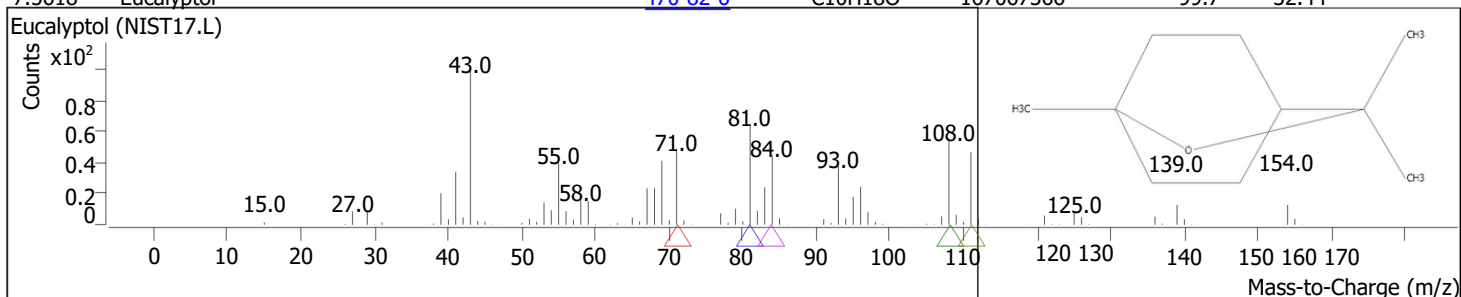
RT	Compound Name	CAS#	Formula	Area	Match Score	Sample	Sample
7.1098	Bicyclo[4.1.0]hept-2-ene, 3,7,7-trimethyl-, (1S-cis)-	4497-92-1	C10H16	2268843	97.8	0.44	1.36



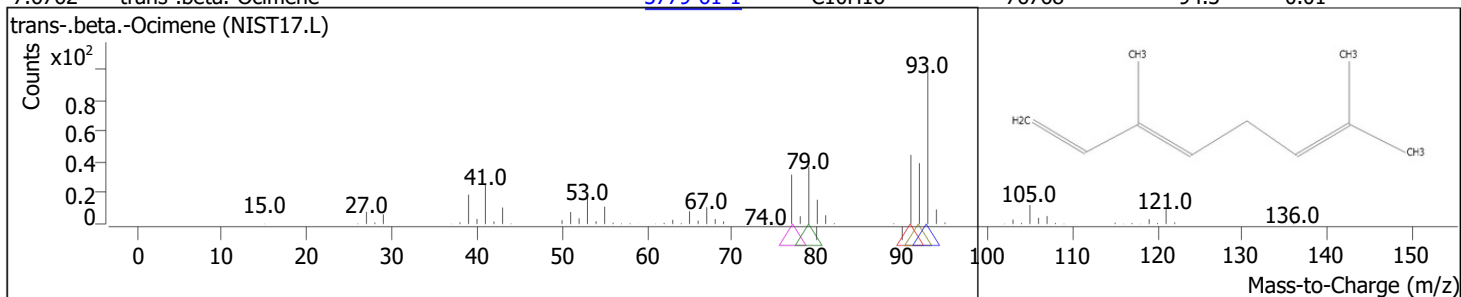
RT	Compound Name	CAS#	Formula	Area	Match Score	Sample	Sample
7.3444	p-Cymene	99-87-6	C10H14	19861751	97.8	3.86	11.89



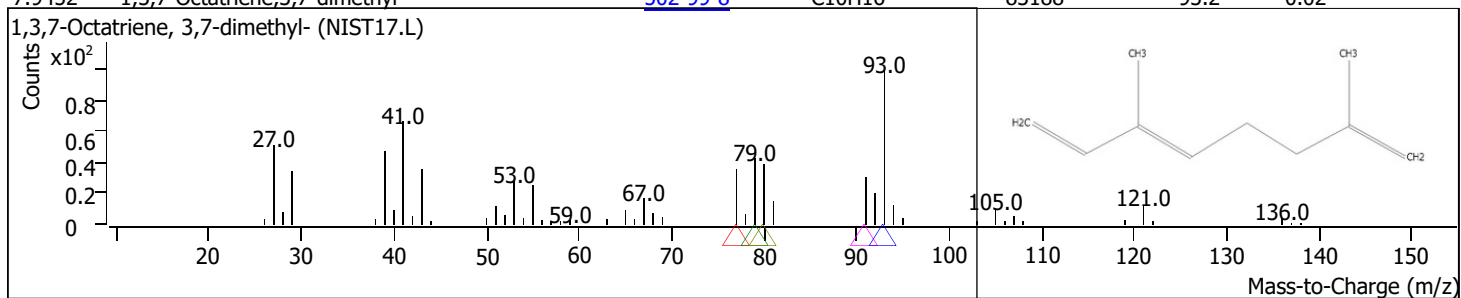
RT	Compound Name	CAS#	Formula	Area	Match Score	Sample	Sample
7.5618	Eucalyptol	470-82-6	C10H18O	167067366	99.7	32.44	100.00



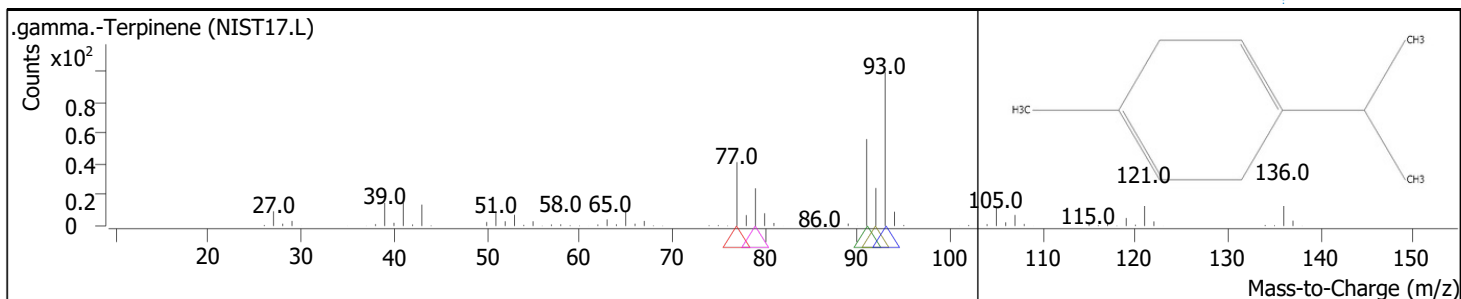
RT	Compound Name	CAS#	Formula	Area	Match Score	Sample	Sample
7.6762	trans-.beta.-Ocimene	3779-61-1	C10H16	76768	94.3	0.01	0.05



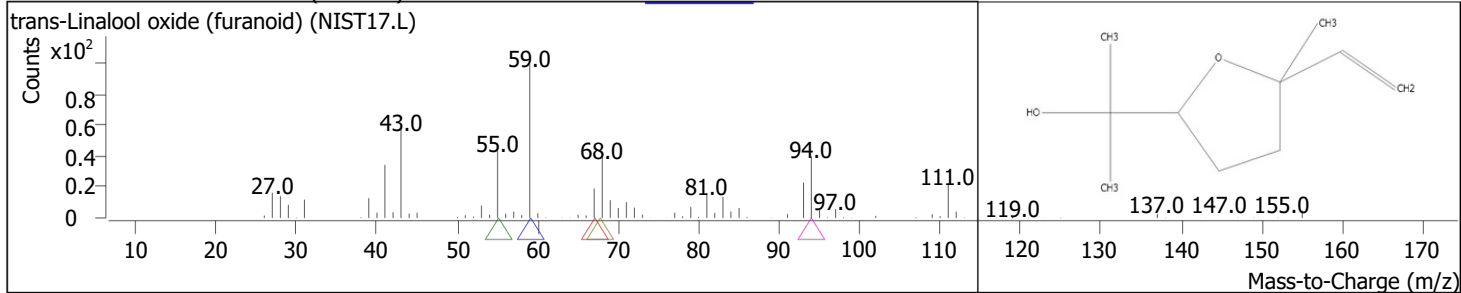
RT	Compound Name	CAS#	Formula	Area	Match Score	Sample	Sample
7.9452	1,3,7-Octatriene, 3,7-dimethyl-	502-99-8	C10H16	83188	93.2	0.02	0.05



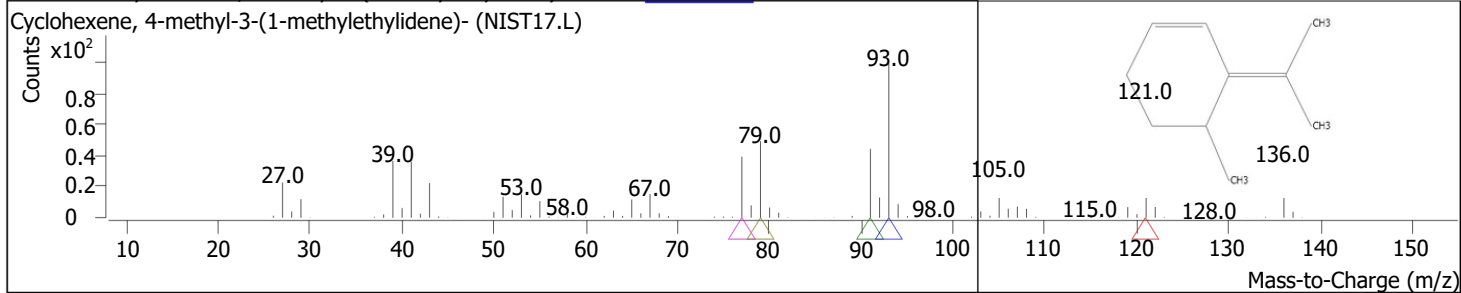
RT	Compound Name	CAS#	Formula	Area	Match Score	Sample	Sample
8.2370	.gamma.-Terpinene	99-85-4	C10H16	26997105	98.7	5.24	16.16



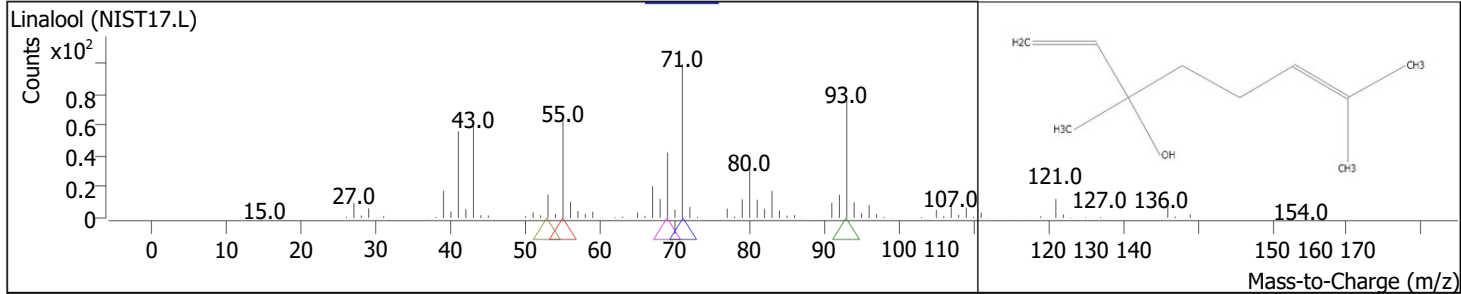
RT	Compound Name	CAS#	Formula	Area	Match Score	Sample	Sample
8.5803	trans-Linalool oxide (furanoid)	34995-77-2	C10H18O2	194897	92.5	0.04	0.12



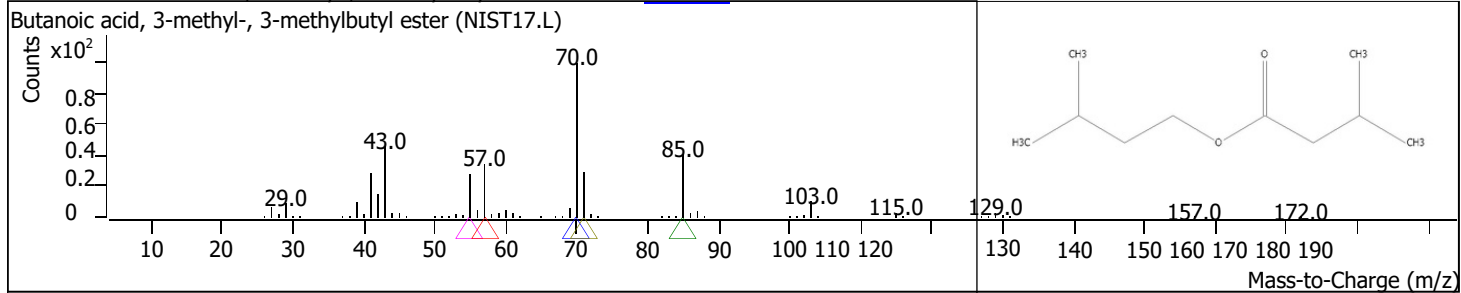
RT	Compound Name	CAS#	Formula	Area	Match Score	Sample	Sample
8.9923	Cyclohexene, 4-methyl-3-(1-methylethylidene)-	99805-90-0	C10H16	3246339	97.1	0.63	1.94



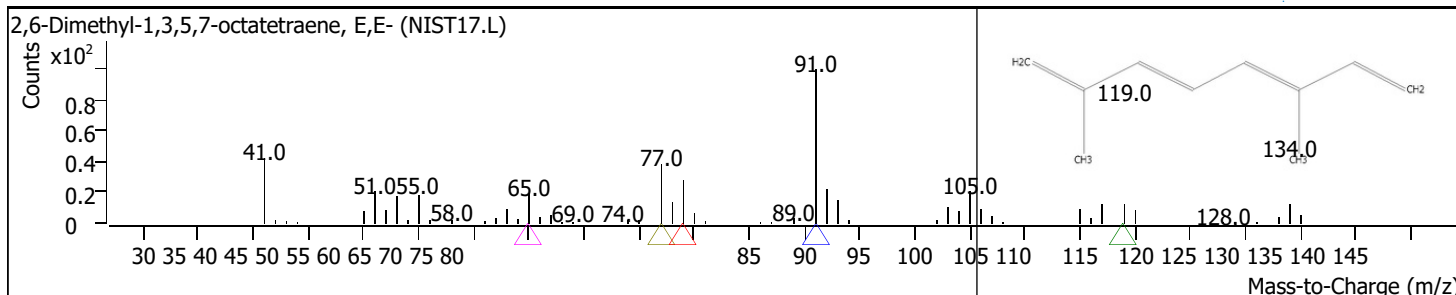
RT	Compound Name	CAS#	Formula	Area	Match Score	Sample	Sample
9.3299	Linalool	78-70-6	C10H18O	286086	94.1	0.06	0.17



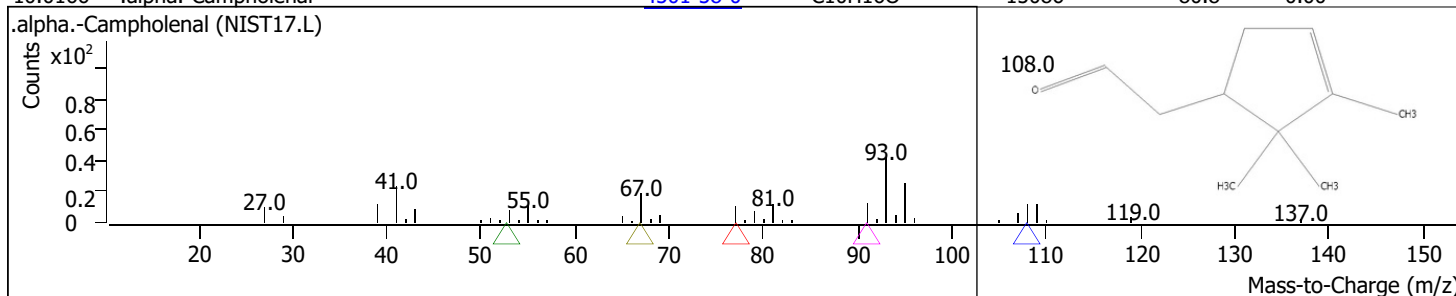
RT	Compound Name	CAS#	Formula	Area	Match Score	Sample	Sample
9.4844	Butanoic acid, 3-methyl-, 3-methylbutyl ester	659-70-1	C10H20O2	132072	94.0	0.03	0.08



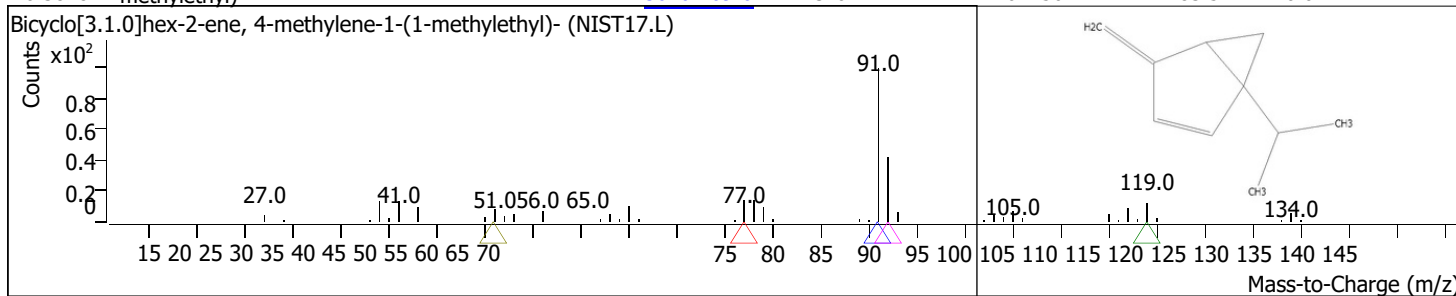
RT	Compound Name	CAS#	Formula	Area	Match Score	Sample	Sample
9.6160	2,6-Dimethyl-1,3,5,7-octatetraene, E,E-	460-01-5	C10H14	38348	84.7	0.01	0.02



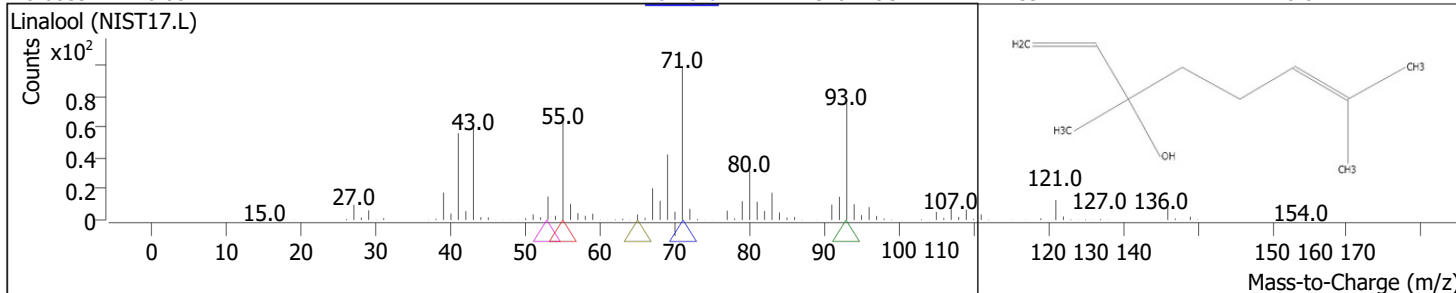
RT	Compound Name	CAS#	Formula	Area	Match Score	Sample	Sample
10.0166	.alpha.-Campholenal	4501-58-0	C10H16O	15086	80.8	0.00	0.01



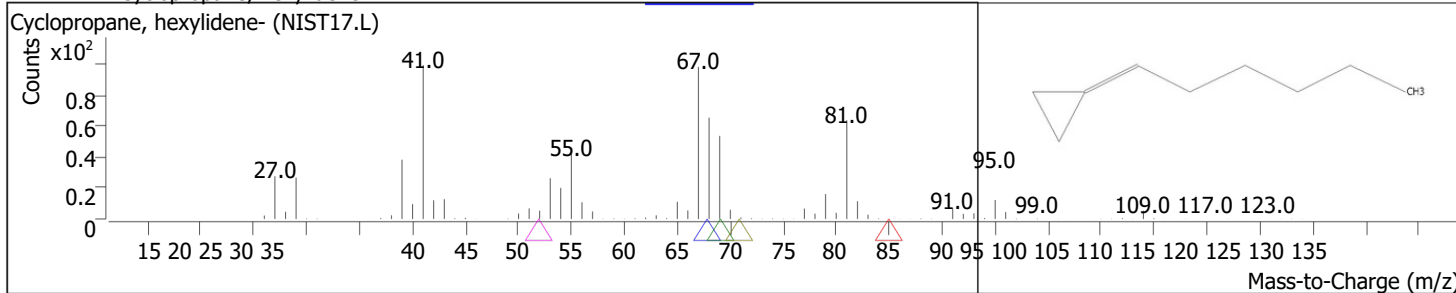
RT	Compound Name	CAS#	Formula	Area	Match Score	Sample	Sample
10.3828	Bicyclo[3.1.0]hex-2-ene, 4-methylene-1-(1-methylethyl)-	36262-09-6	C10H14	64456	83.5	0.01	0.04



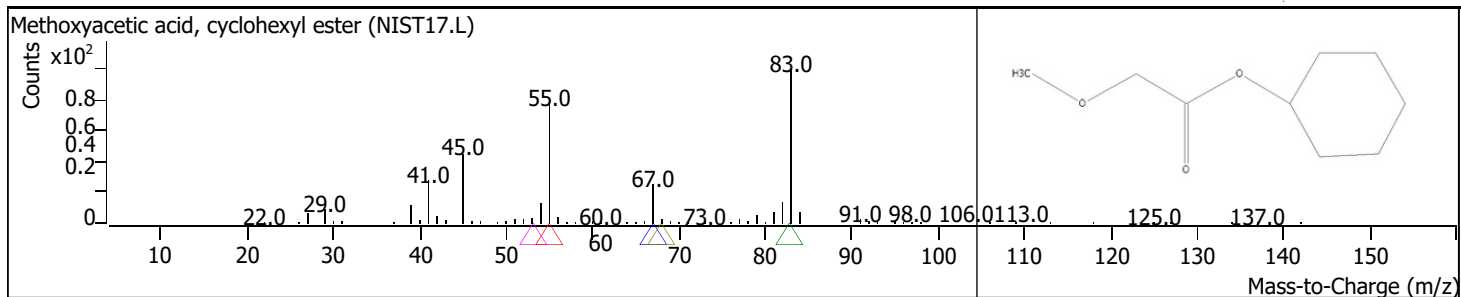
RT	Compound Name	CAS#	Formula	Area	Match Score	Sample	Sample
10.6059	Linalool	78-70-6	C10H18O	25927	72.2	0.01	0.02



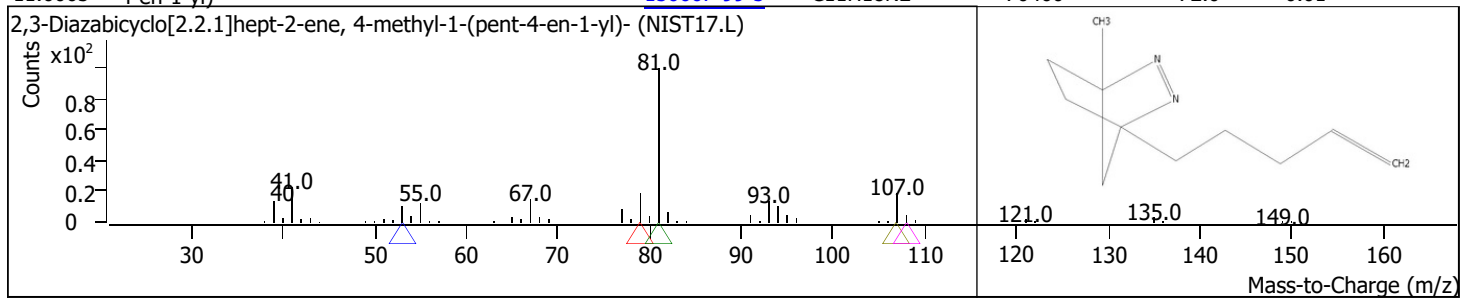
RT	Compound Name	CAS#	Formula	Area	Match Score	Sample	Sample
10.6860	Cyclopropane, hexylidene-	91509-06-7	C9H16	29216	68.9	0.01	0.02



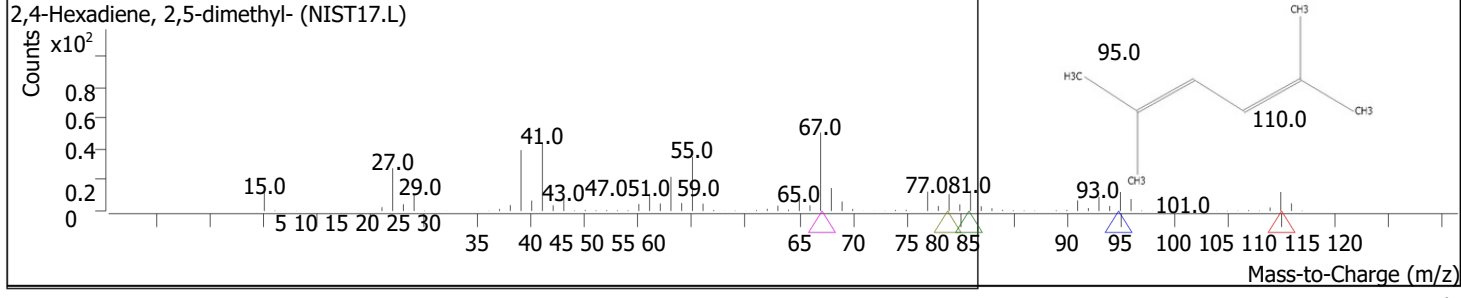
RT	Compound Name	CAS#	Formula	Area	Match Score	Sample	Sample
10.8119	Methoxyacetic acid, cyclohexyl ester	1000282-69-4	C9H16O3	76952	69.9	0.01	0.05



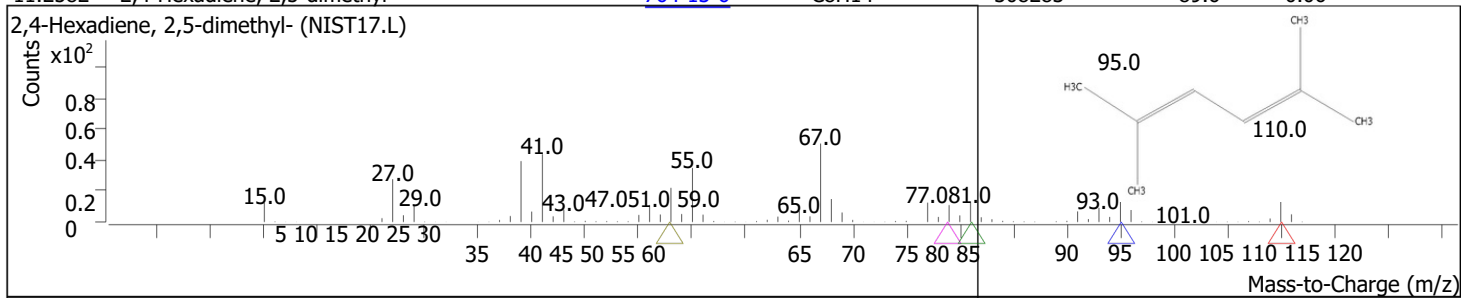
RT	Compound Name	CAS#	Formula	Area	Match Score	Sample	Sample
11.0065	2,3-Diazabicyclo[2.2.1]hept-2-ene, 4-methyl-1-(pent-4-en-1-yl)-	150667-99-5	C11H18N2	70460	72.0	0.01	0.04



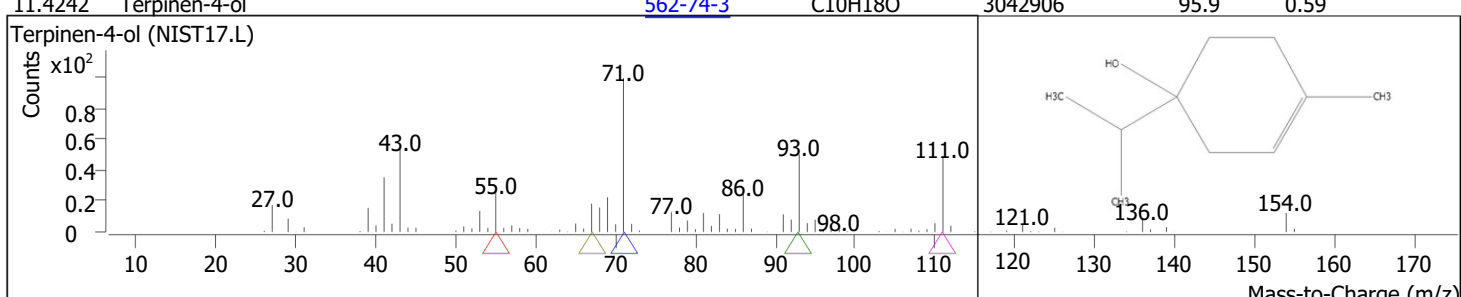
RT	Compound Name	CAS#	Formula	Area	Match Score	Sample	Sample
11.1667	2,4-Hexadiene, 2,5-dimethyl-	764-13-6	C8H14	248123	87.4	0.05	0.15



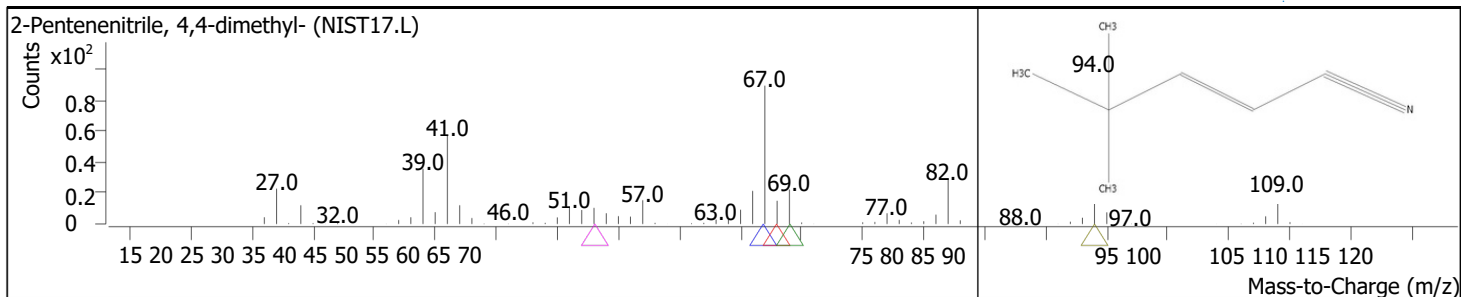
RT	Compound Name	CAS#	Formula	Area	Match Score	Sample	Sample
11.2582	2,4-Hexadiene, 2,5-dimethyl-	764-13-6	C8H14	308283	89.6	0.06	0.18



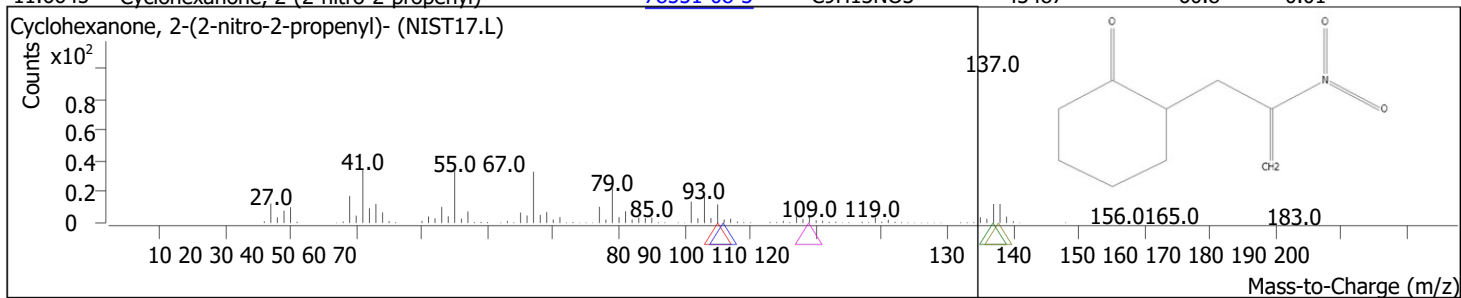
RT	Compound Name	CAS#	Formula	Area	Match Score	Sample	Sample
11.4242	Terpinen-4-ol	562-74-3	C10H18O	3042906	95.9	0.59	1.82



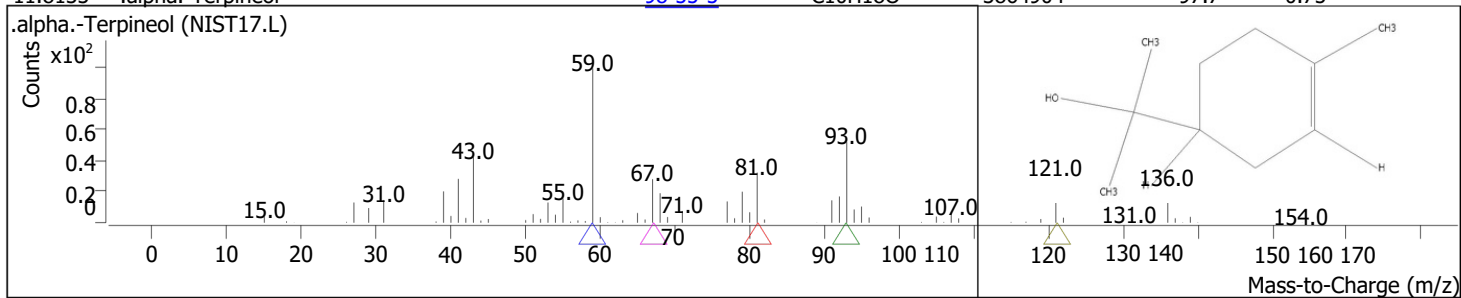
RT	Compound Name	CAS#	Formula	Area	Match Score	Sample	Sample
11.5958	2-Pentenenitrile, 4,4-dimethyl-	39168-14-4	C7H11N	50746	72.8	0.01	0.03



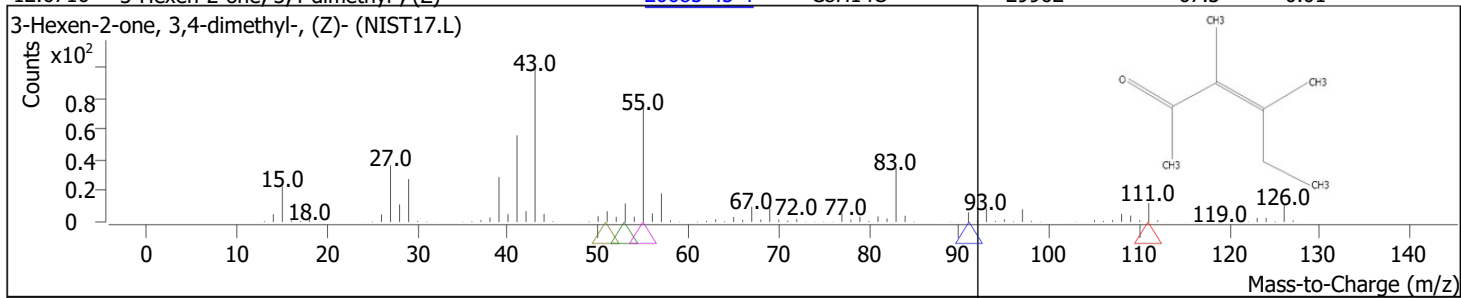
RT	Compound Name	CAS#	Formula	Area	Match Score	Sample	Sample
11.6645	Cyclohexanone, 2-(2-nitro-2-propenyl)-	78551-08-3	C9H13NO3	43487	60.8	0.01	0.03



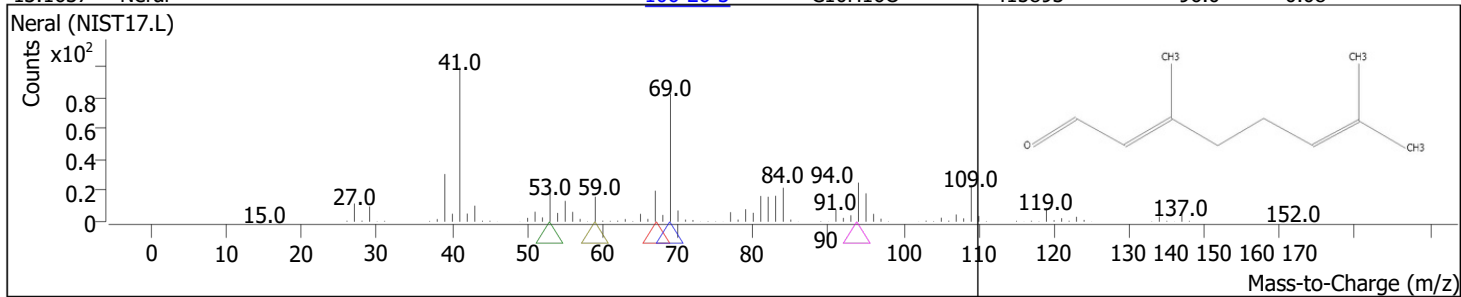
RT	Compound Name	CAS#	Formula	Area	Match Score	Sample	Sample
11.8133	.alpha.-Terpineol	98-55-5	C10H18O	3864904	97.7	0.75	2.31



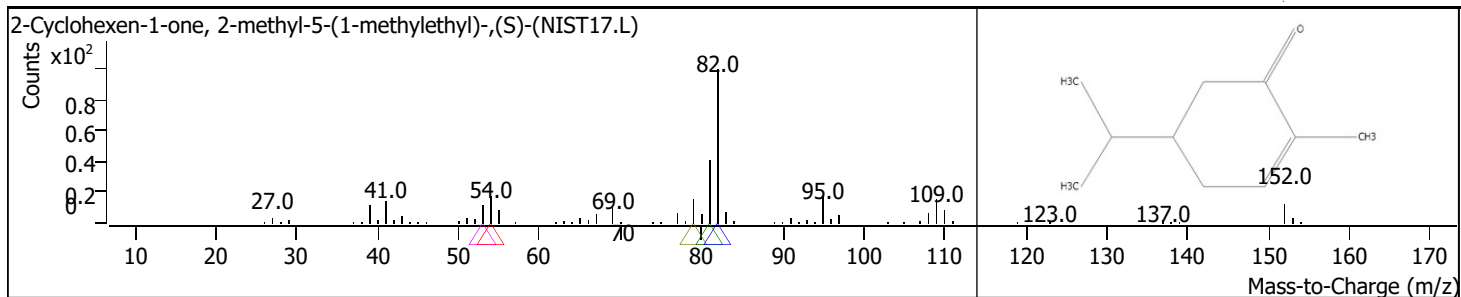
RT	Compound Name	CAS#	Formula	Area	Match Score	Sample	Sample
12.6716	3-Hexen-2-one, 3,4-dimethyl-, (Z)-	20685-45-4	C8H14O	29962	67.3	0.01	0.02



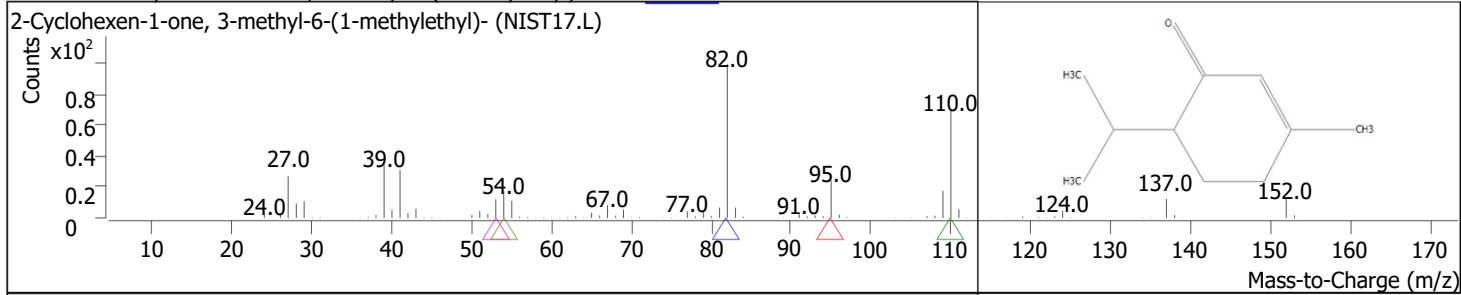
RT	Compound Name	CAS#	Formula	Area	Match Score	Sample	Sample
13.1637	Neral	106-26-3	C10H16O	415893	96.0	0.08	0.25



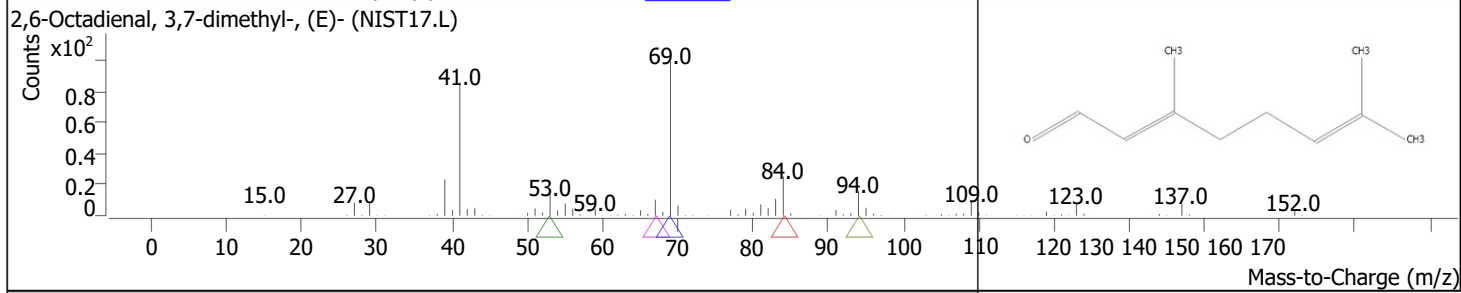
RT	Compound Name	CAS#	Formula	Area	Match Score	Sample	Sample
13.3182	2-Cyclohexen-1-one, 2-methyl-5-(1-methylethyl)-, (S)-	499-71-8	C10H16O	264291	93.6	0.05	0.16



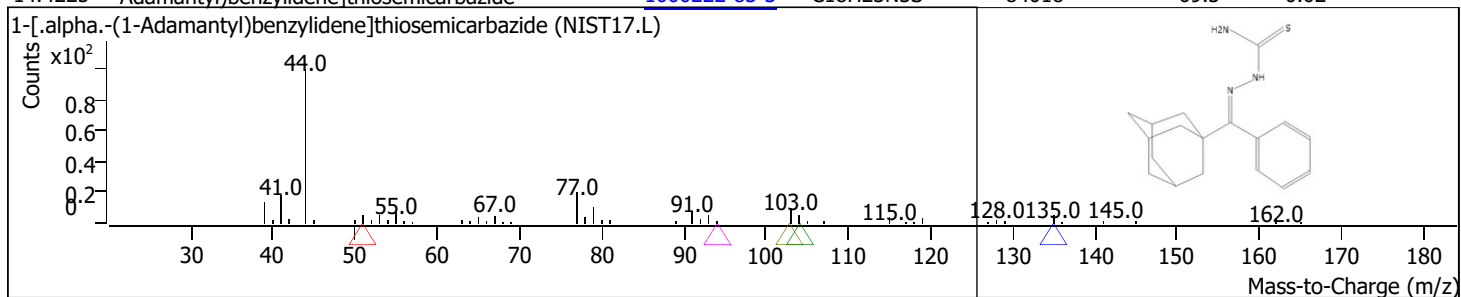
RT	Compound Name	CAS#	Formula	Area	Match Score	Sample	Sample
13.5013	2-Cyclohexen-1-one, 3-methyl-6-(1-methylethyl)-	89-81-6	C10H16O	136154	93.4	0.03	0.08



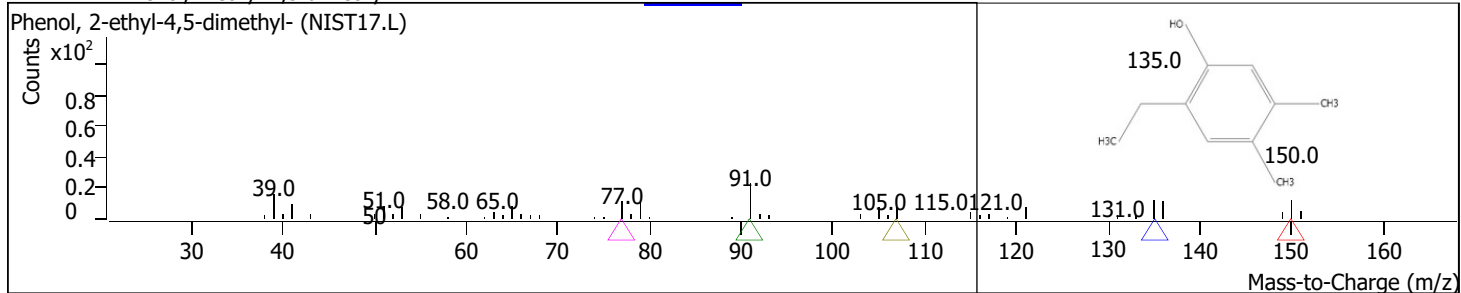
RT	Compound Name	CAS#	Formula	Area	Match Score	Sample	Sample
13.9591	2,6-Octadienal, 3,7-dimethyl-, (E)-	141-27-5	C10H16O	538042	95.7	0.10	0.32



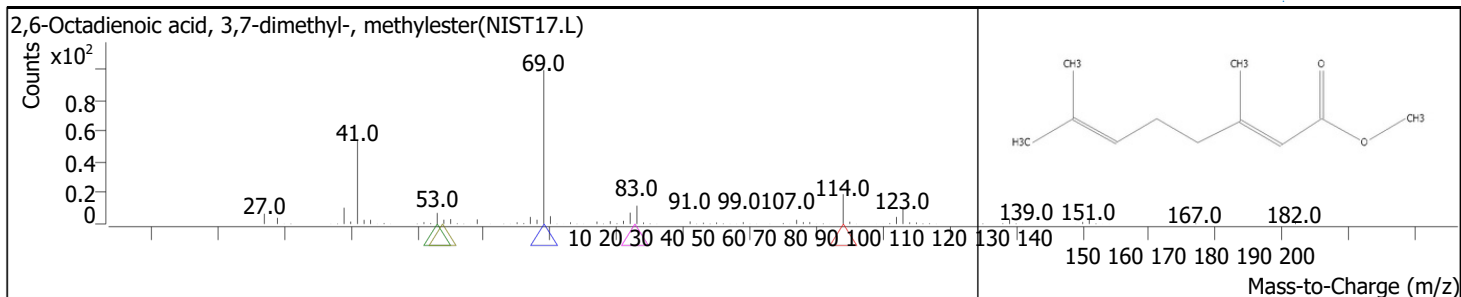
RT	Compound Name	CAS#	Formula	Area	Match Score	Sample	Sample
14.4225	1-[(1-Adamantyl)benzylidene]thiosemicarbazide	1000222-83-3	C18H23N3S	84018	69.3	0.02	0.05



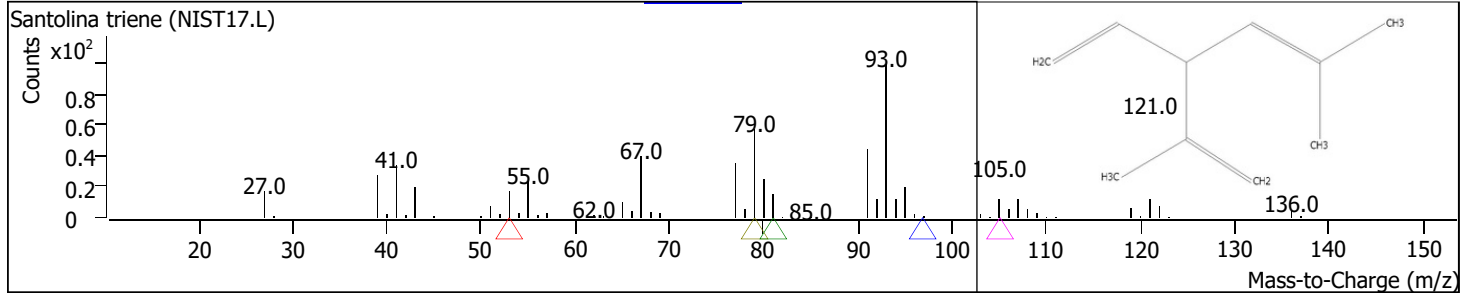
RT	Compound Name	CAS#	Formula	Area	Match Score	Sample	Sample
14.8231	Phenol, 2-ethyl-4,5-dimethyl-	2219-78-5	C10H14O	97178	90.1	0.02	0.06



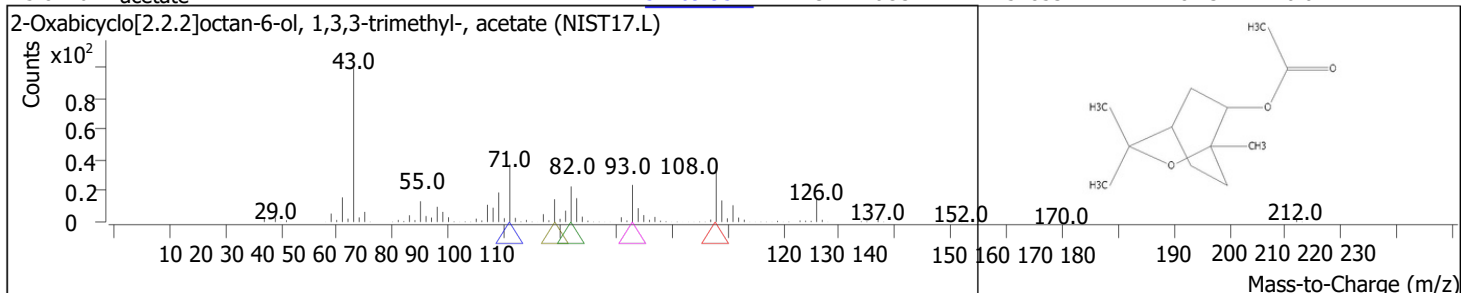
RT	Compound Name	CAS#	Formula	Area	Match Score	Sample	Sample
15.3781	2,6-Octadienoic acid, 3,7-dimethyl-, methyl ester	2349-14-6	C11H18O2	34298	64.7	0.01	0.02



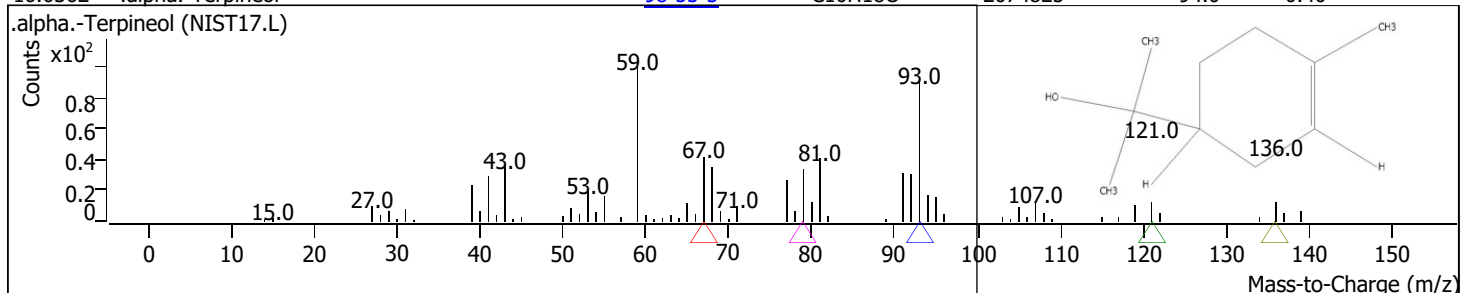
RT	Compound Name	CAS#	Formula	Area	Match Score	Sample	Sample
15.7100	Santolina triene	2153-66-4	C10H16	23668	70.3	0.00	0.01



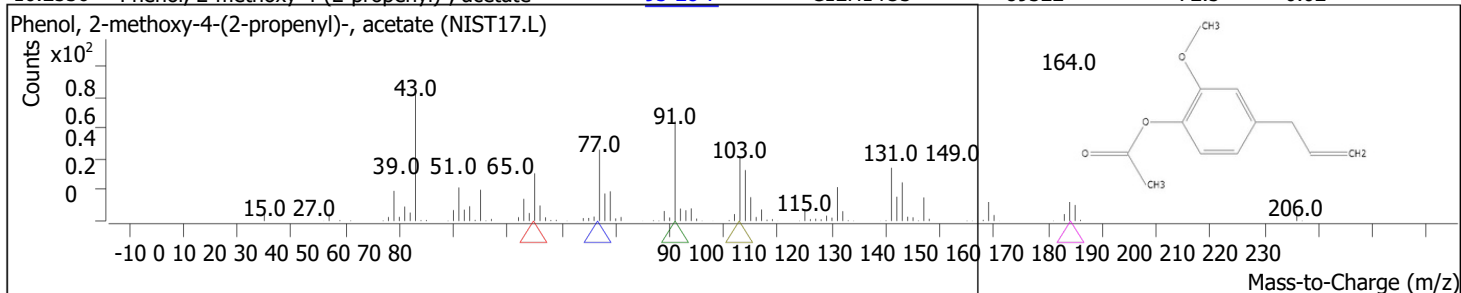
RT	Compound Name	CAS#	Formula	Area	Match Score	Sample	Sample
15.8416	2-Oxabicyclo[2.2.2]octan-6-ol, 1,3,3-trimethyl-, acetate	57709-95-2	C12H20O3	52853	84.3	0.01	0.03



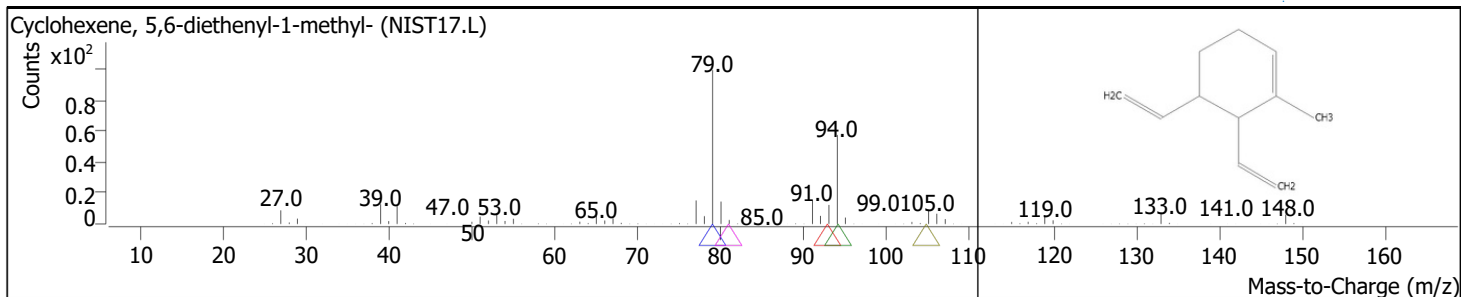
RT	Compound Name	CAS#	Formula	Area	Match Score	Sample	Sample
16.0362	.alpha.-Terpineol	98-55-5	C10H18O	2074825	94.0	0.40	1.24



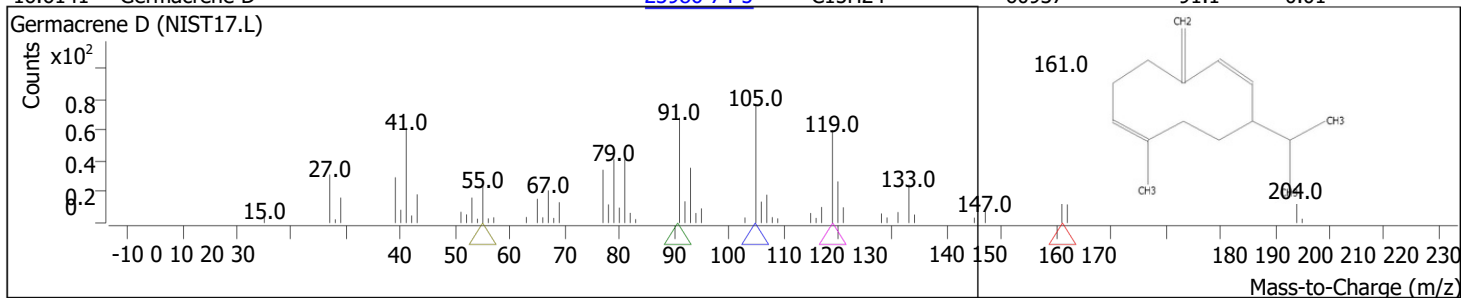
RT	Compound Name	CAS#	Formula	Area	Match Score	Sample	Sample
16.2536	Phenol, 2-methoxy-4-(2-propenyl)-, acetate	93-28-7	C12H14O3	89322	72.5	0.02	0.05



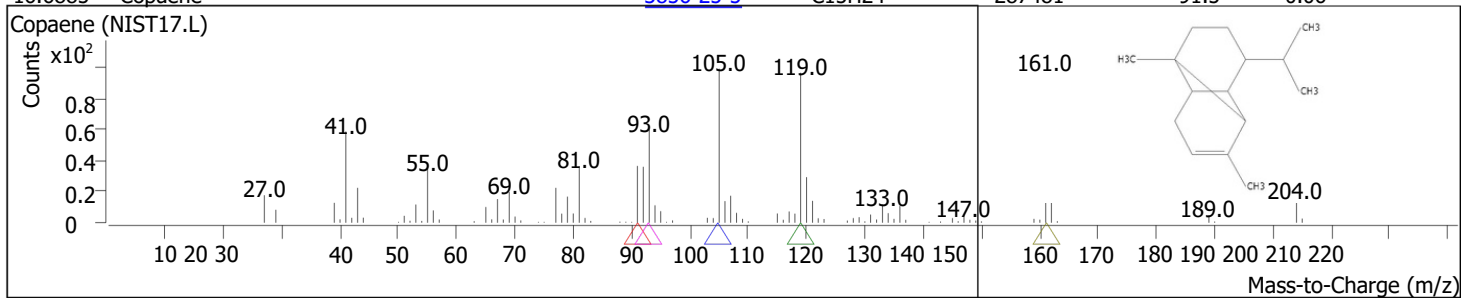
RT	Compound Name	CAS#	Formula	Area	Match Score	Sample	Sample
16.4081	Cyclohexene, 5,6-diethenyl-1-methyl-	61141-78-4	C11H16	26793	67.5	0.01	0.02



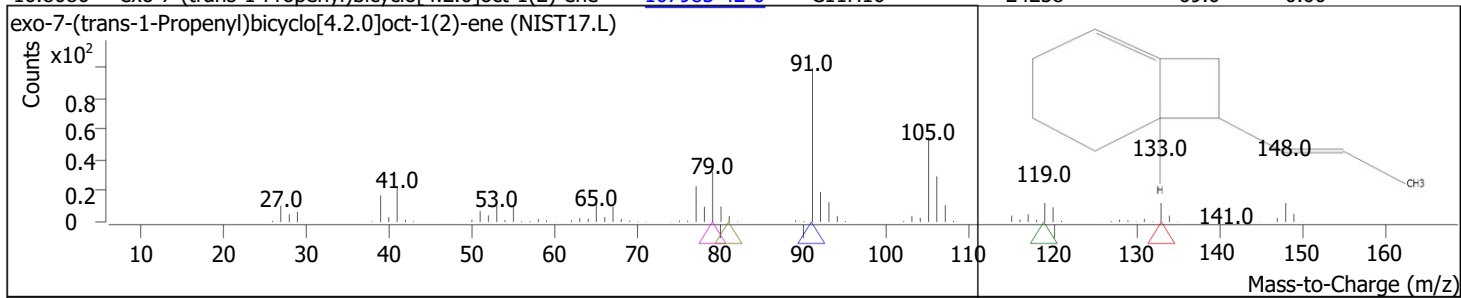
RT	Compound Name	CAS#	Formula	Area	Match Score	Sample	Sample
16.6141	Germacrene D	23986-74-5	C15H24	60937	91.1	0.01	0.04



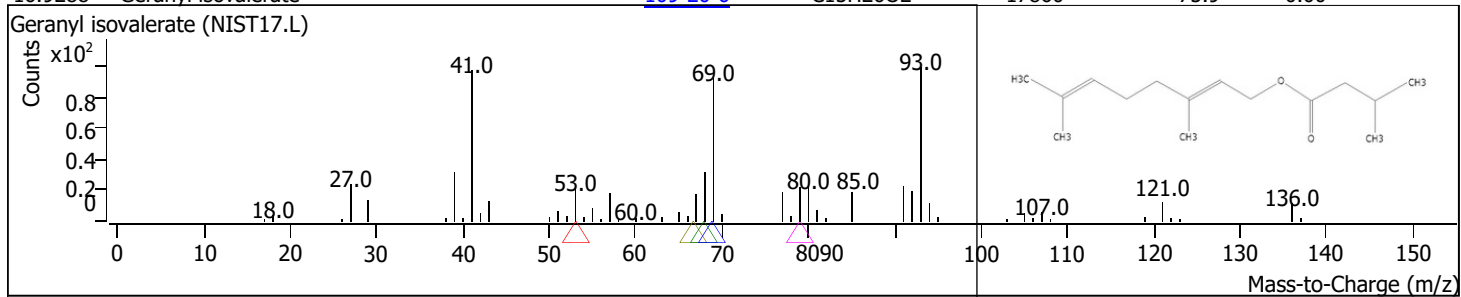
RT	Compound Name	CAS#	Formula	Area	Match Score	Sample	Sample
16.6885	Copaene	3856-25-5	C15H24	287481	91.5	0.06	0.17



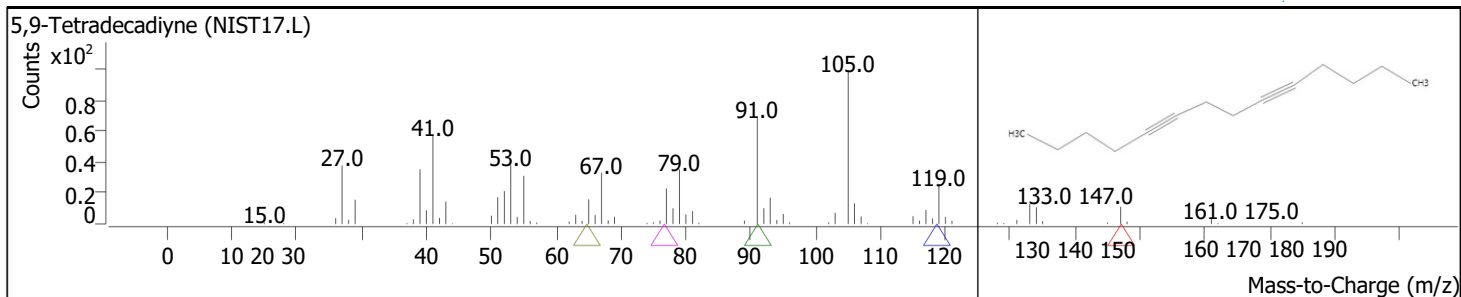
RT	Compound Name	CAS#	Formula	Area	Match Score	Sample	Sample
16.8086	exo-7-(trans-1-Propenyl)bicyclo[4.2.0]oct-1(2)-ene	107983-42-6	C11H16	24258	69.0	0.00	0.01



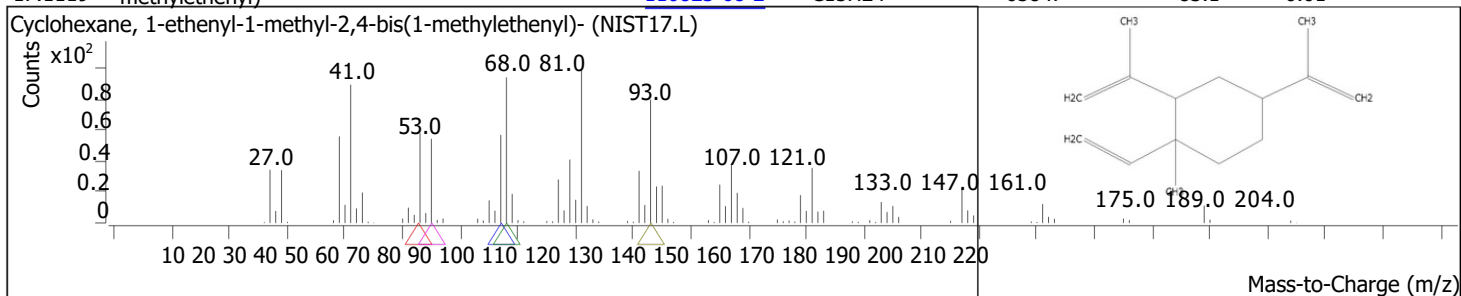
RT	Compound Name	CAS#	Formula	Area	Match Score	Sample	Sample
16.9288	Geranyl isovalerate	109-20-6	C15H26O2	17860	75.9	0.00	0.01



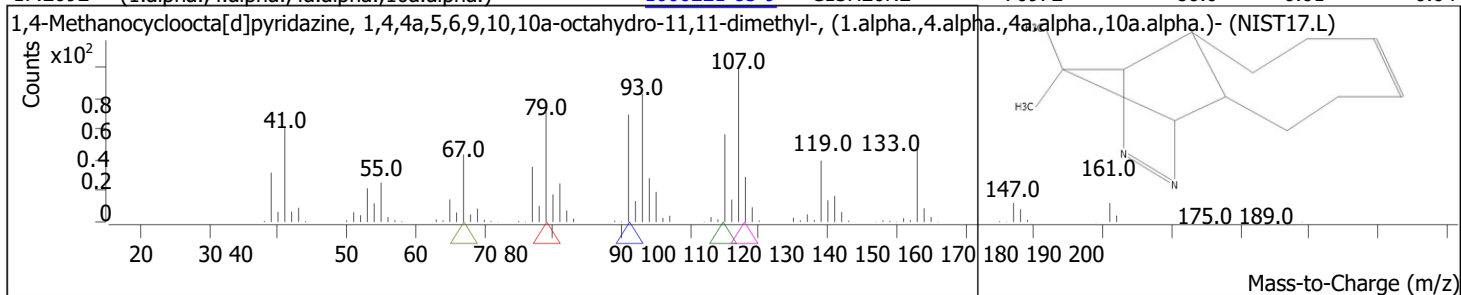
RT	Compound Name	CAS#	Formula	Area	Match Score	Sample	Sample
17.0203	5,9-Tetradecadiyne	51255-61-9	C14H22	21810	70.8	0.00	0.01



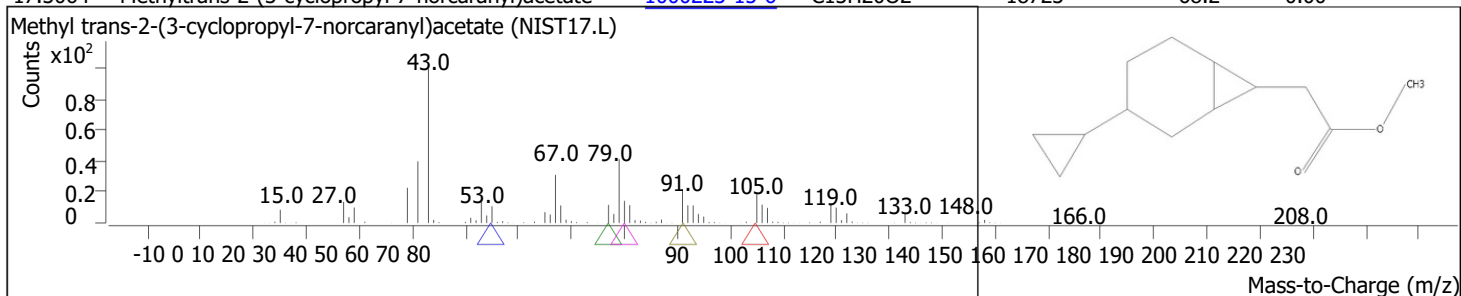
RT	Compound Name	CAS#	Formula	Area	Match Score	Sample	Sample
17.1119	Cyclohexane, 1-ethenyl-1-methyl-2,4-bis(1-methylethenyl)-	110823-68-2	C15H24	65847	83.1	0.01	0.04



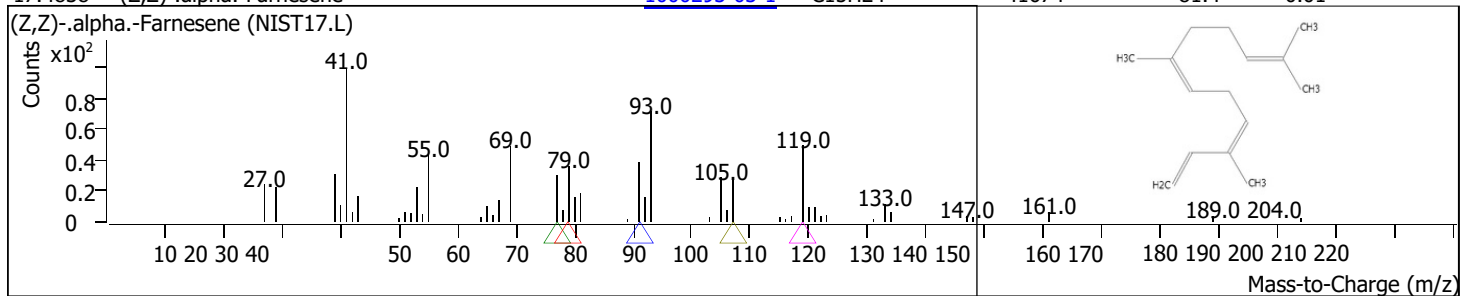
RT	Compound Name	CAS#	Formula	Area	Match Score	Sample	Sample
17.2092	1,4-Methanocycloocta[d]pyridazine, 1,4,4a,5,6,9,10,10a-octahydro-11,11-dimethyl-, (1.alpha.,4.alpha.,4a.alpha.,10a.alpha.)-	1000221-85-9	C13H20N2	70972	80.0	0.01	0.04



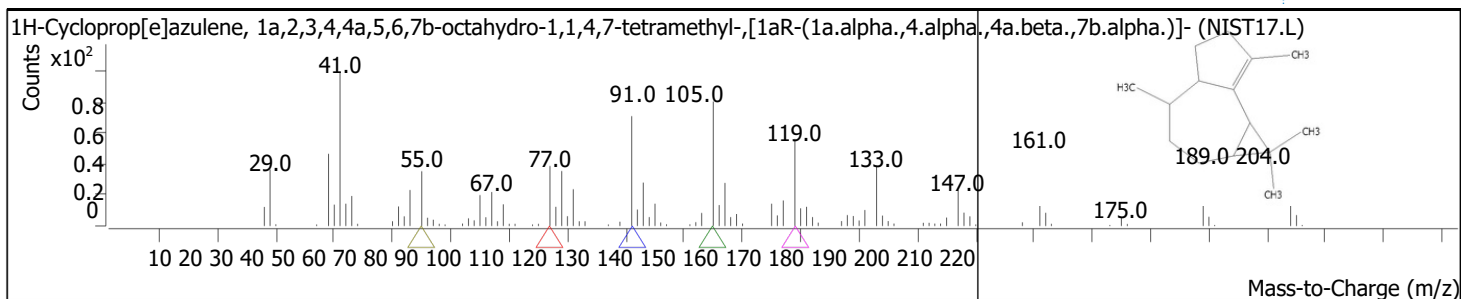
RT	Compound Name	CAS#	Formula	Area	Match Score	Sample	Sample
17.3064	Methyltrans-2-(3-cyclopropyl-7-norcaranyl)acetate	1000223-15-6	C13H20O2	18723	68.2	0.00	0.01



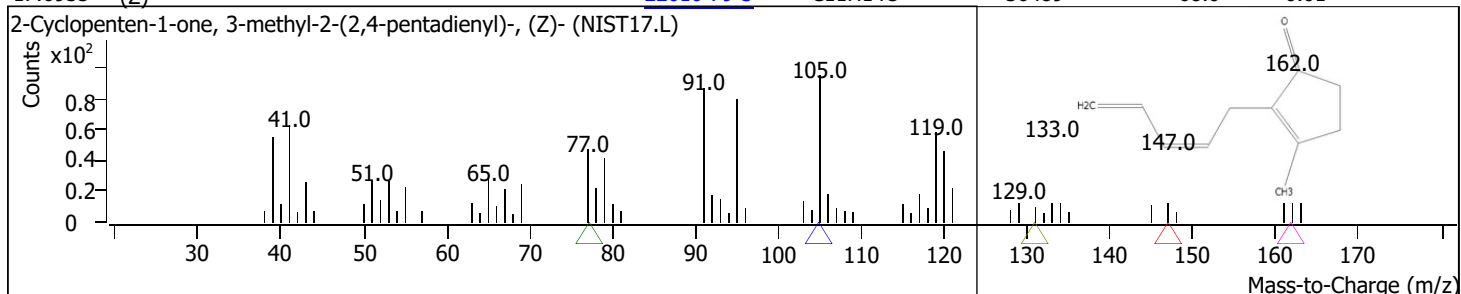
RT	Compound Name	CAS#	Formula	Area	Match Score	Sample	Sample
17.4838	(Z,Z)-.alpha.-Farnesene	1000293-03-1	C15H24	41674	81.4	0.01	0.02



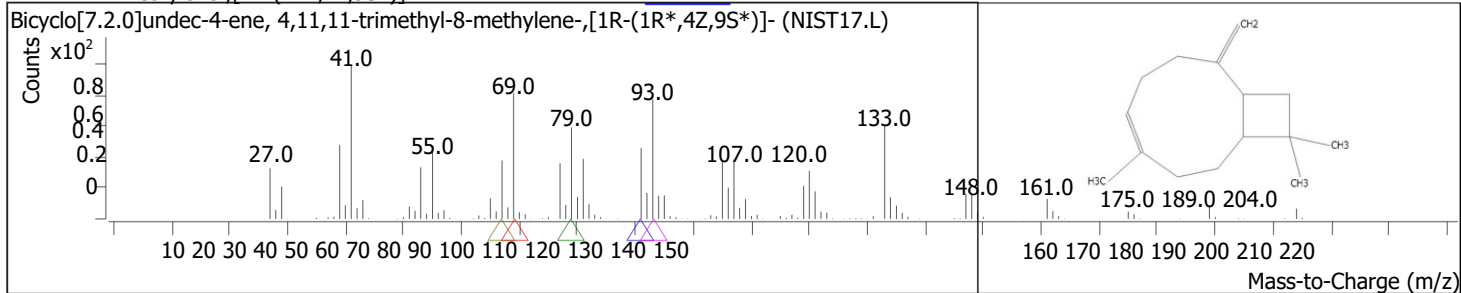
RT	Compound Name	CAS#	Formula	Area	Match Score	Sample	Sample
17.5525	1H-Cycloprop[e]azulene, 1a,2,3,4,4a,5,6,7b-octahydro-1,1,4,7-tetramethyl-, [1aR-(1a.alpha.,4.alpha.,4a.beta.,7b.alpha.)]-	489-40-7	C15H24	411678	93.0	0.08	0.25



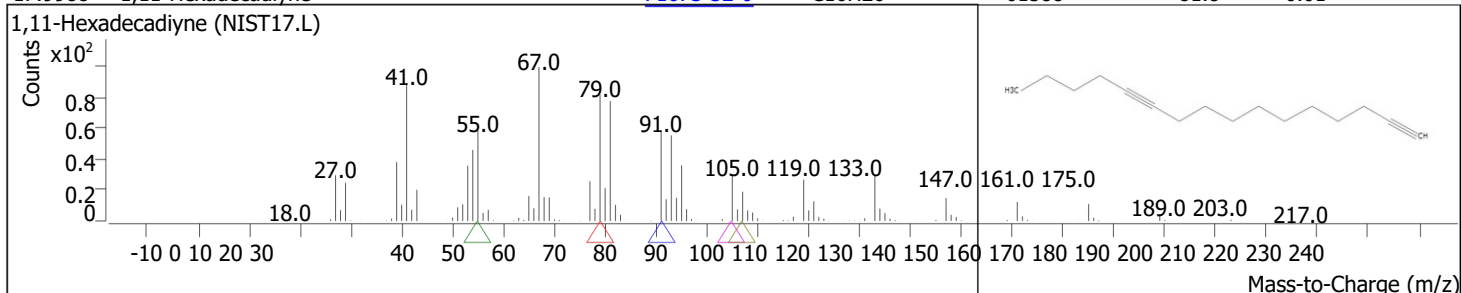
RT	Compound Name	CAS#	Formula	Area	Match Score	Sample	Sample
17.6955	2-Cyclopenten-1-one, 3-methyl-2-(2,4-pentadienyl)-, (Z)-	22610-79-3	C11H14O	36489	68.0	0.01	0.02



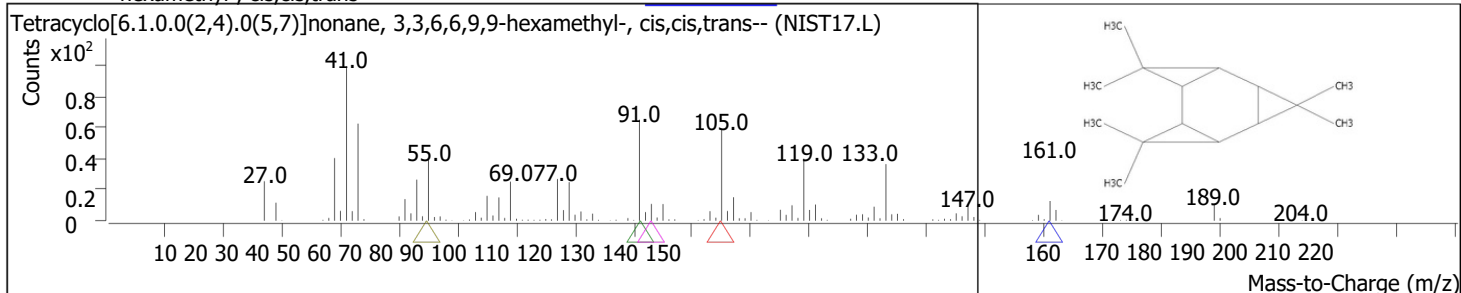
RT	Compound Name	CAS#	Formula	Area	Match Score	Sample	Sample
17.7871	Bicyclo[7.2.0]undec-4-ene, 4,11,11-trimethyl-8-methylene-, [1R-(1R*,4Z,9S*)]-	118-65-0	C15H24	1758207	94.9	0.34	1.05



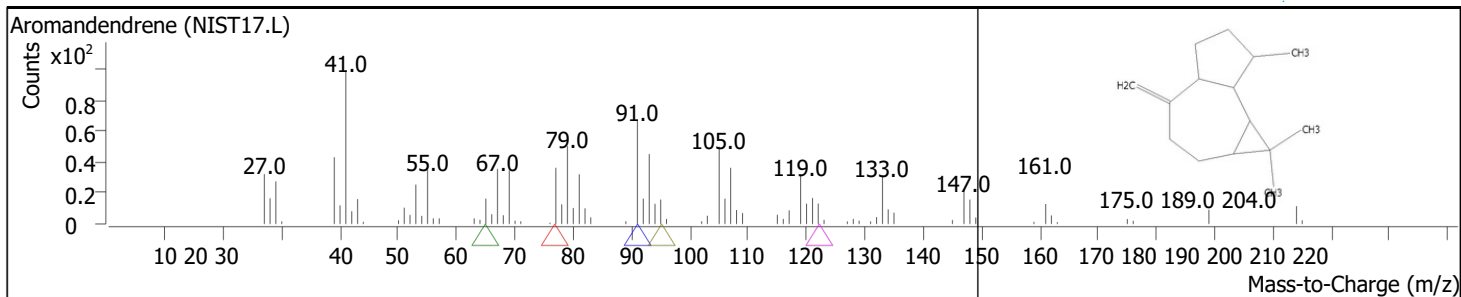
RT	Compound Name	CAS#	Formula	Area	Match Score	Sample	Sample
17.9988	1,11-Hexadecadiyne	71673-32-0	C16H26	61588	81.8	0.01	0.04



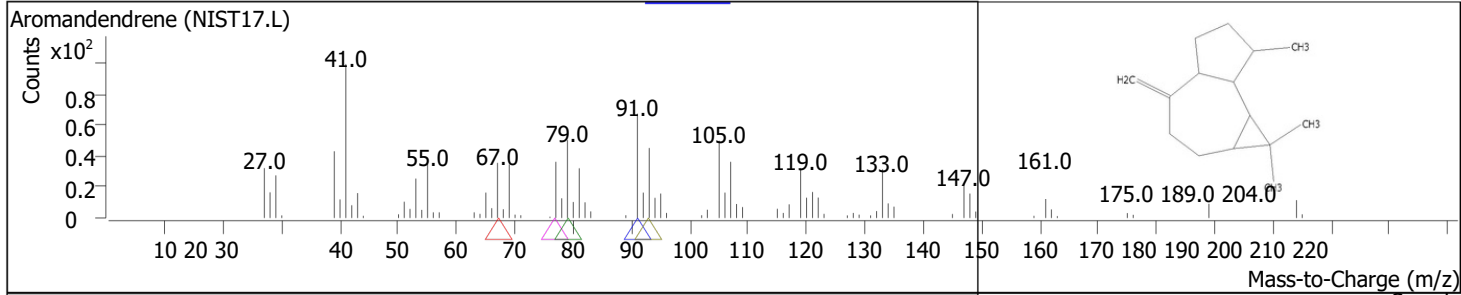
RT	Compound Name	CAS#	Formula	Area	Match Score	Sample	Sample
18.0904	Tetracyclo[6.1.0.0(2,4).0(5,7)]nonane, 3,3,6,6,9,9-hexamethyl-, cis,cis,trans--	1000151-74-7	C15H24	101060	85.8	0.02	0.06



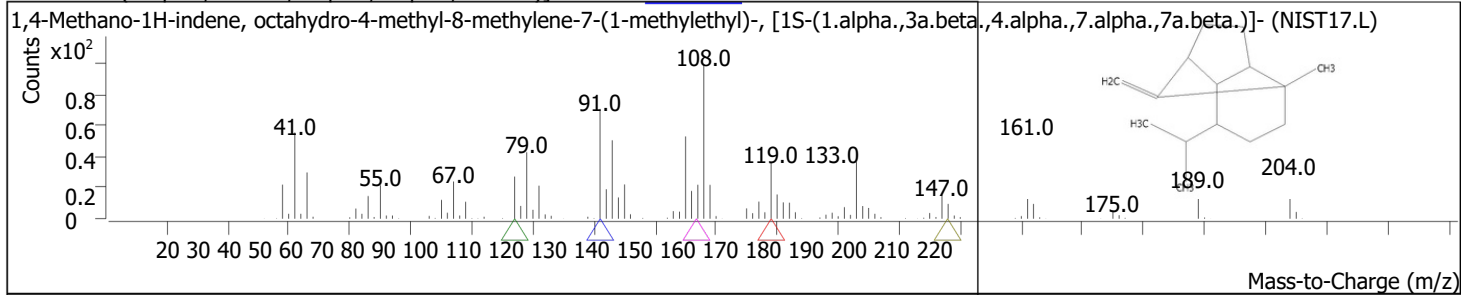
RT	Compound Name	CAS#	Formula	Area	Match Score	Sample	Sample
18.1533	Aromandendrene	489-39-4	C15H24	56346	71.0	0.01	0.03



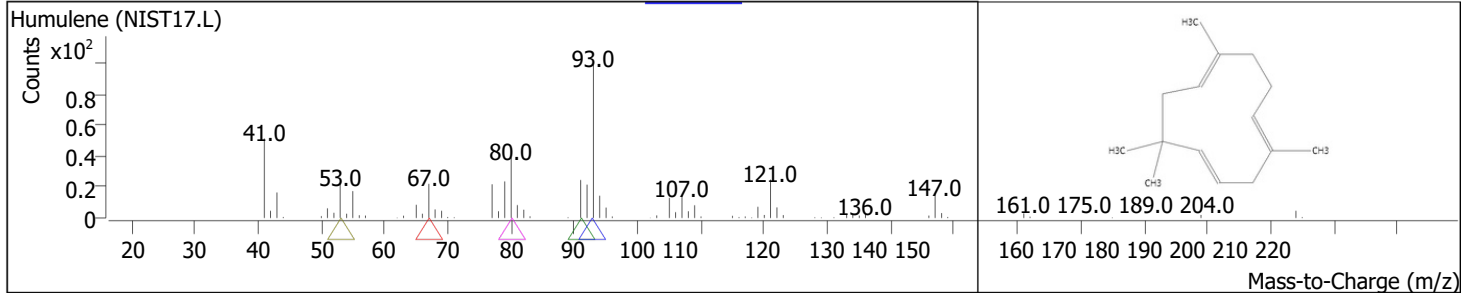
RT	Compound Name	CAS#	Formula	Area	Match Score	Sample	Sample
18.2735	Aromandendrene	489-39-4	C15H24	1799983	95.9	0.35	1.08



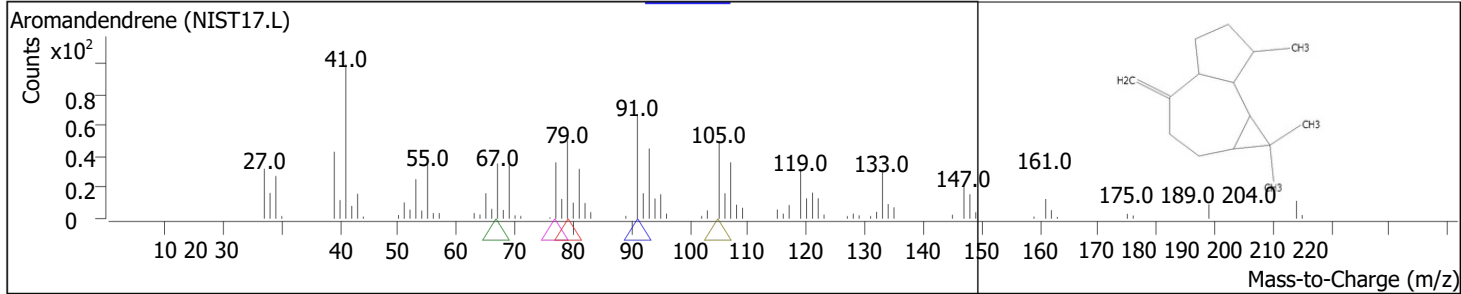
RT	Compound Name	CAS#	Formula	Area	Match Score	Sample	Sample
18.3765	1,4-Methano-1H-indene, octahydro-4-methyl-8-methylene-7-(1-methylethyl)-, [1S-(1.alpha.,3a.beta.,4.alpha.,7.alpha.,7a.beta.)]-	3650-28-0	C15H24	32663	76.0	0.01	0.02



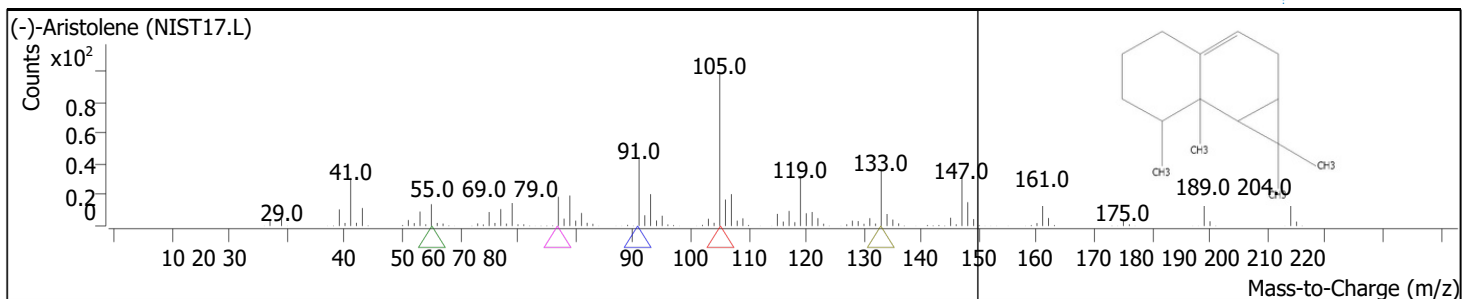
RT	Compound Name	CAS#	Formula	Area	Match Score	Sample	Sample
18.6340	Humulene	6753-98-6	C15H24	332966	87.9	0.06	0.20



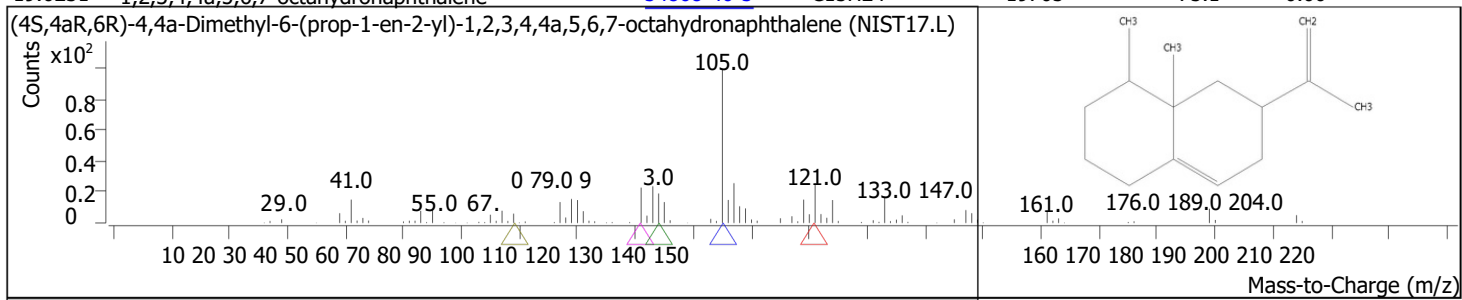
RT	Compound Name	CAS#	Formula	Area	Match Score	Sample	Sample
18.7999	Aromandendrene	489-39-4	C15H24	708940	96.0	0.14	0.42



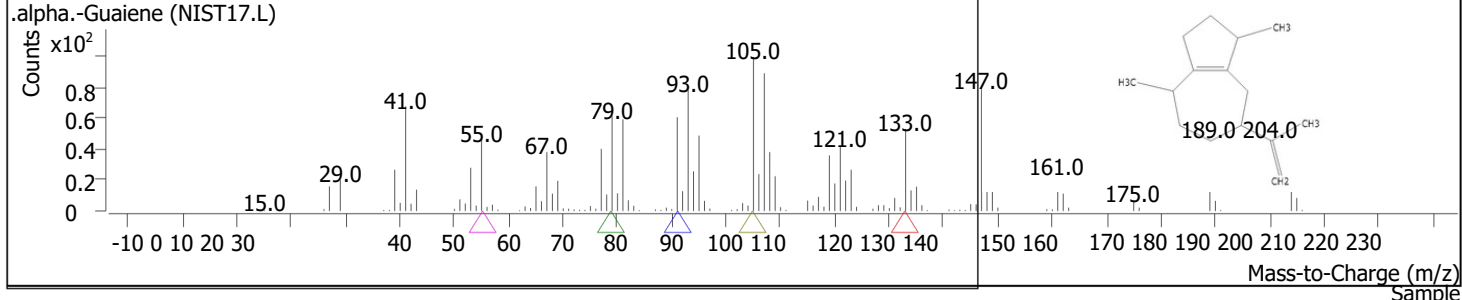
RT	Compound Name	CAS#	Formula	Area	Match Score	Sample	Sample
18.9201	(-)-Aristolene	6831-16-9	C15H24	75345	82.3	0.01	0.05



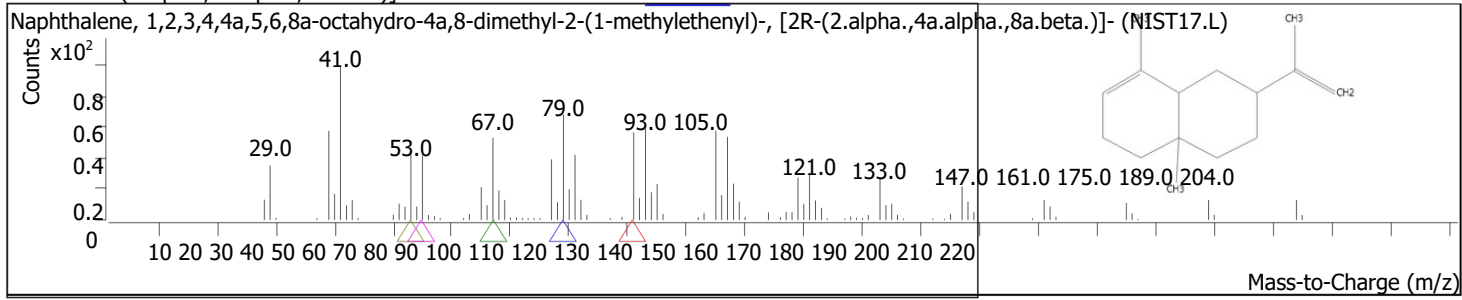
RT	Compound Name	CAS#	Formula	Area	Match Score	Sample	Sample
19.0231	(4S,4aR,6R)-4,4a-Dimethyl-6-(prop-1-en-2-yl)-1,2,3,4,4a,5,6,7-octahydronaphthalene	54868-40-5	C15H24	19705	75.1	0.00	0.01



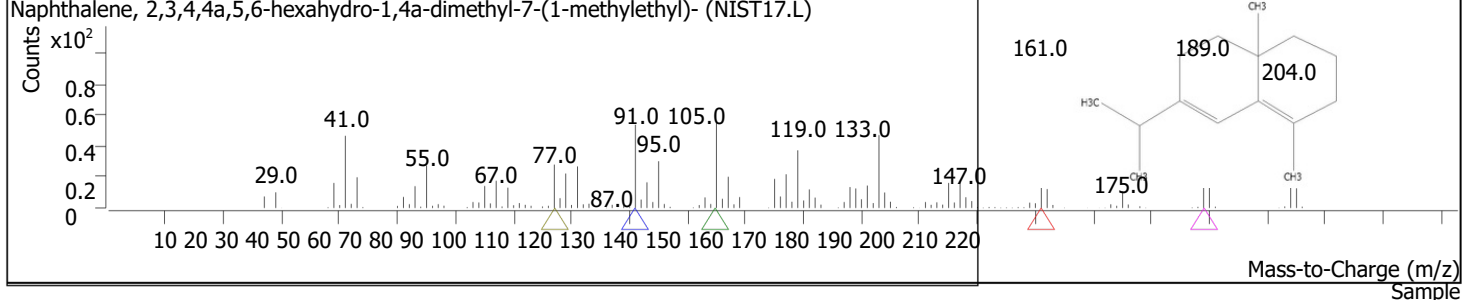
RT	Compound Name	CAS#	Formula	Area	Match Score	Sample	Sample
19.1776	.alpha.-Guaiene	3691-12-1	C15H24	780633	90.6	0.15	0.47



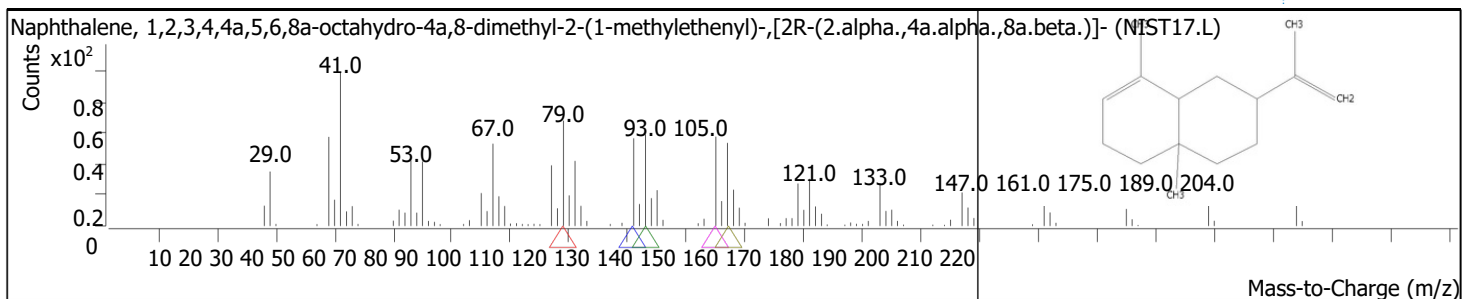
RT	Compound Name	CAS#	Formula	Area	Match Score	Sample	Sample
19.4350	Naphthalene, 1,2,3,4,4a,5,6,8a-octahydro-4a,8-dimethyl-2-(1-methylethenyl)-, [2R-(2.alpha.,4a.alpha.,8a.beta.)]-	473-13-2	C15H24	1365222	95.9	0.27	0.82



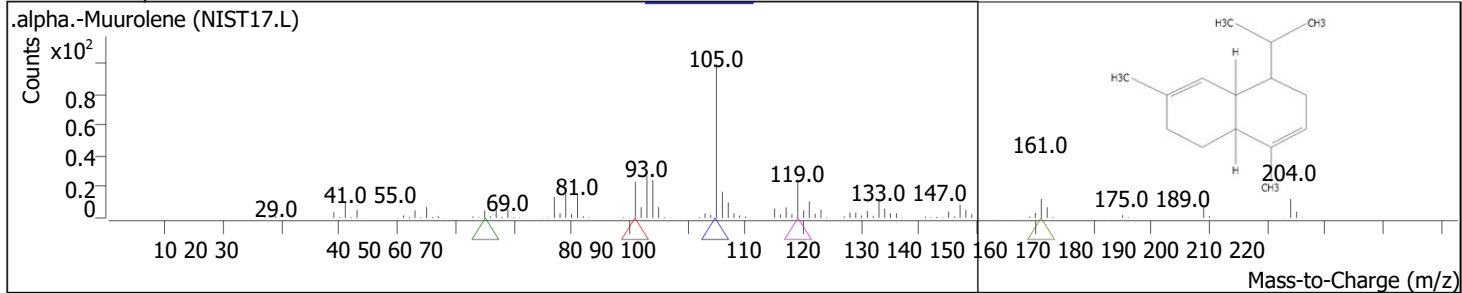
RT	Compound Name	CAS#	Formula	Area	Match Score	Sample	Sample
19.5724	Naphthalene, 2,3,4,4a,5,6-hexahydro-1,4a-dimethyl-7-(1-methylethyl)-	473-14-3	C15H24	609572	92.6	0.12	0.36



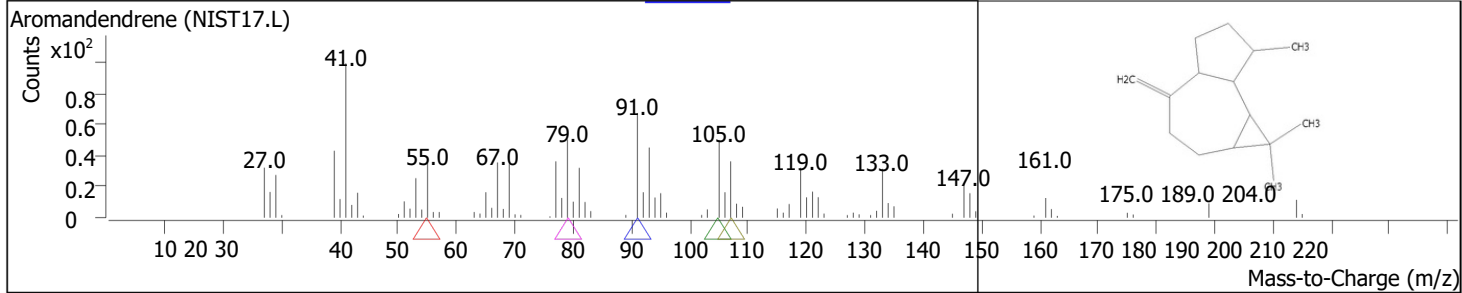
RT	Compound Name	CAS#	Formula	Area	Match Score	Sample	Sample
19.6639	Naphthalene, 1,2,3,4,4a,5,6,8a-octahydro-4a,8-dimethyl-2-(1-methylethenyl)-, [2R-(2.alpha.,4a.alpha.,8a.beta.)]-	473-13-2	C15H24	2579420	94.0	0.50	1.54



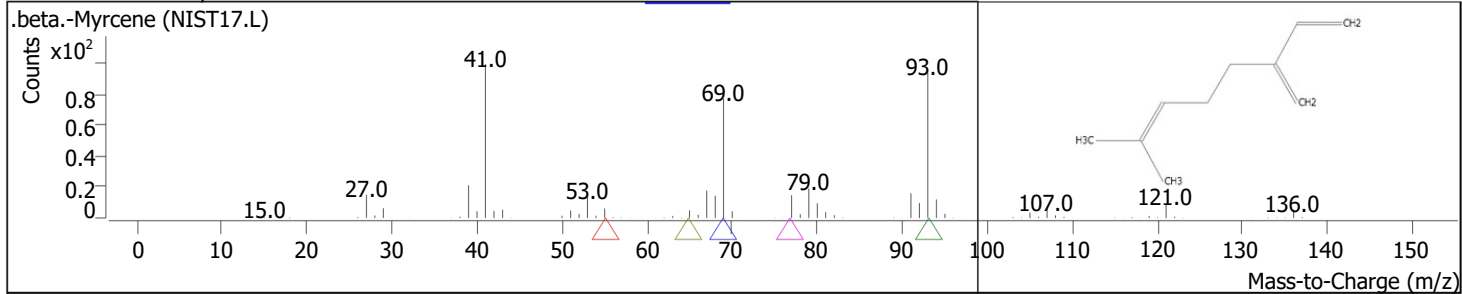
RT	Compound Name	CAS#	Formula	Area	Match Score	Sample	Sample
19.7784	.alpha.-Muurolene	10208-80-7	C15H24	240716	71.5	0.05	0.14



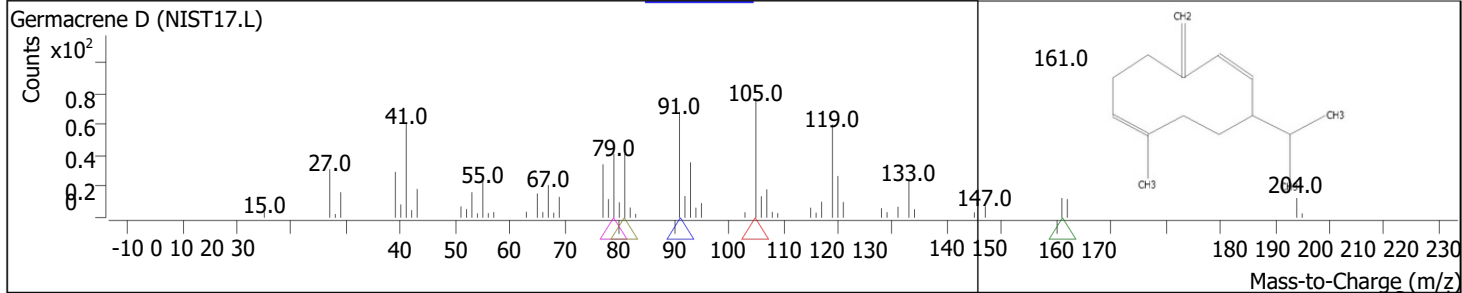
RT	Compound Name	CAS#	Formula	Area	Match Score	Sample	Sample
19.9271	Aromandendrene	489-39-4	C15H24	211073	90.0	0.04	0.13



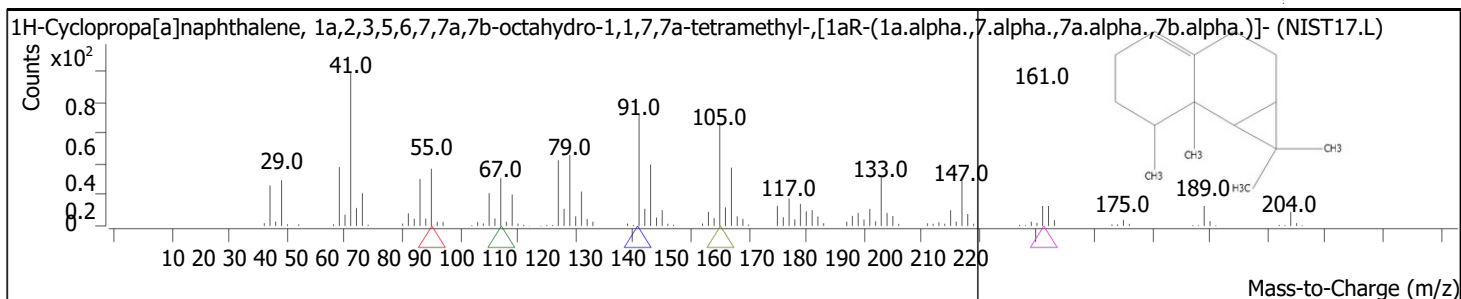
RT	Compound Name	CAS#	Formula	Area	Match Score	Sample	Sample
19.9901	.beta.-Myrcene	123-35-3	C10H16	136654	79.6	0.03	0.08



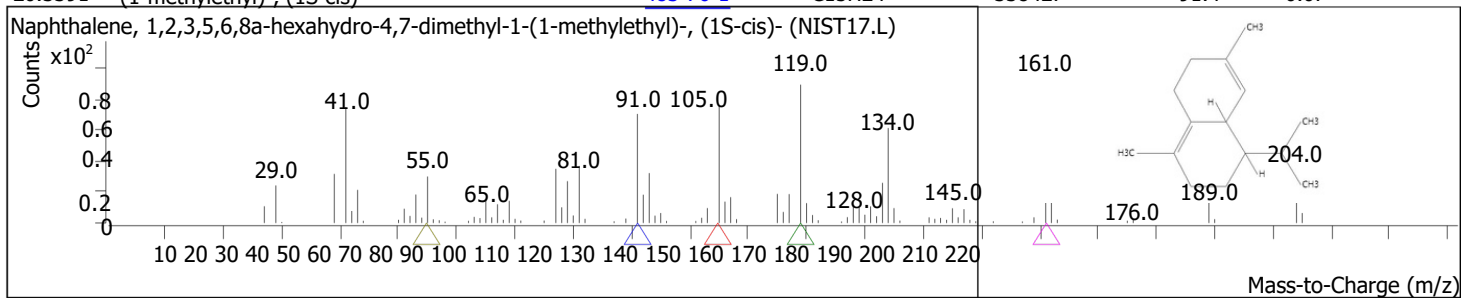
RT	Compound Name	CAS#	Formula	Area	Match Score	Sample	Sample
20.1102	Germacrene D	23986-74-5	C15H24	147051	92.0	0.03	0.09



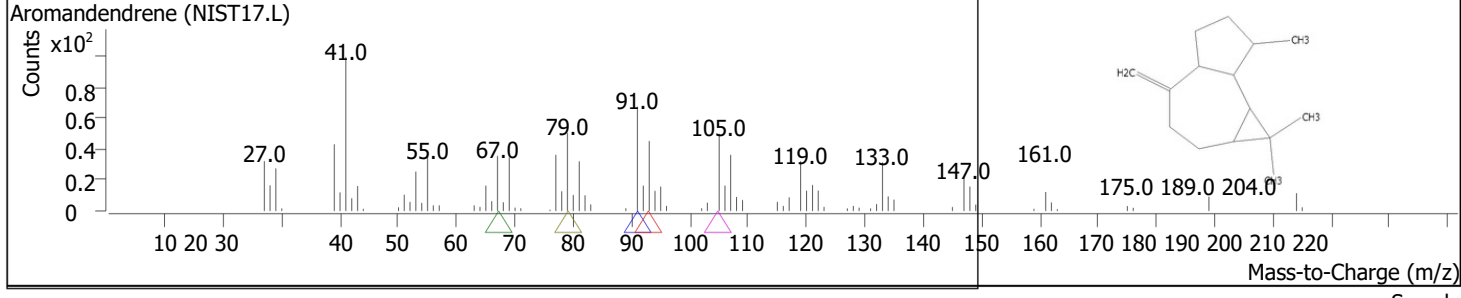
RT	Compound Name	CAS#	Formula	Area	Match Score	Sample	Sample
20.2533	1H-Cyclopropa[a]naphthalene, 1a,2,3,5,6,7,7a,7b-octahydro-1,1,7,7a-tetramethyl-, [1aR-(1a.alpha.,7.alpha.,7a.alpha.,7b.alpha.)]-	17334-55-3	C15H24	337031	90.3	0.07	0.20



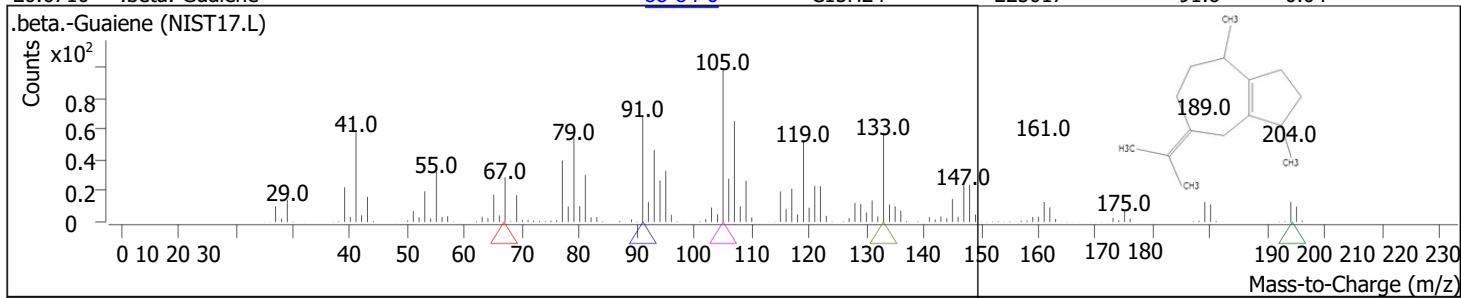
RT	Compound Name	CAS#	Formula	Area	Match Score	Sample	Sample
20.3391	Naphthalene, 1,2,3,5,6,8a-hexahydro-4,7-dimethyl-1-(1-methylethyl)-, (1S-cis)-	483-76-1	C15H24	338427	91.4	0.07	0.20



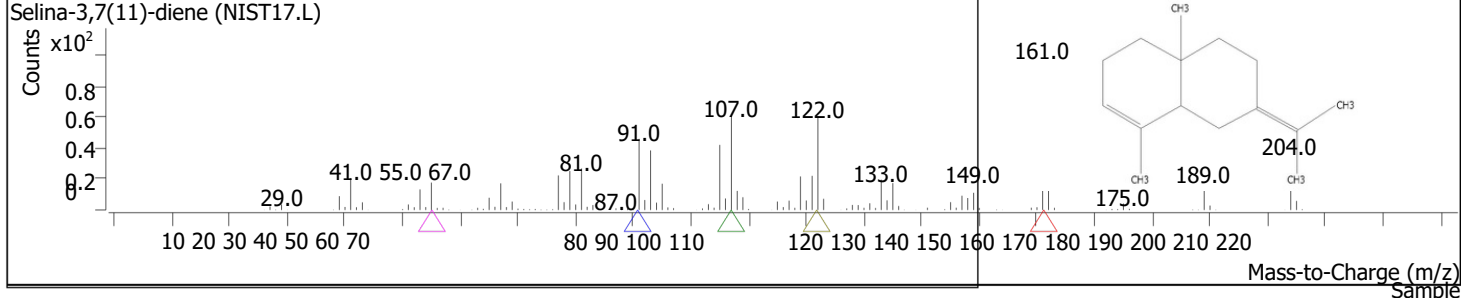
RT	Compound Name	CAS#	Formula	Area	Match Score	Sample	Sample
20.5966	Aromandendrene	489-39-4	C15H24	316588	91.9	0.06	0.19



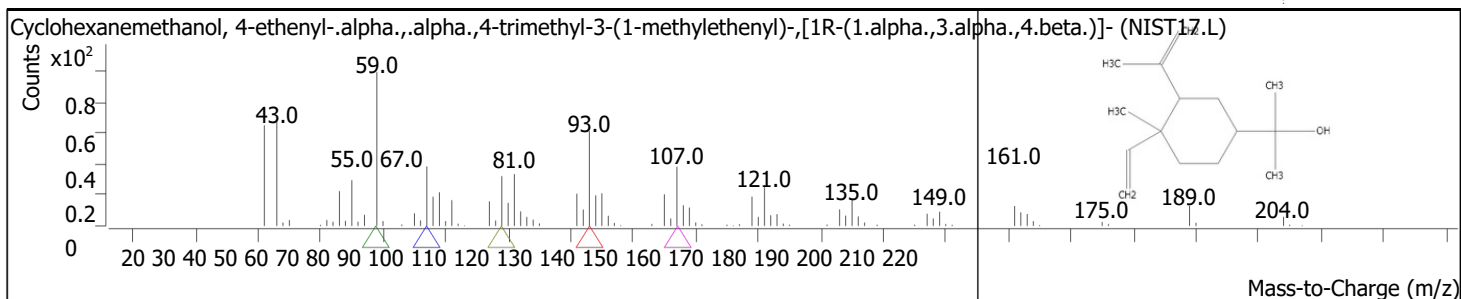
RT	Compound Name	CAS#	Formula	Area	Match Score	Sample	Sample
20.6710	.beta.-Guaiene	88-84-6	C15H24	225017	91.6	0.04	0.13



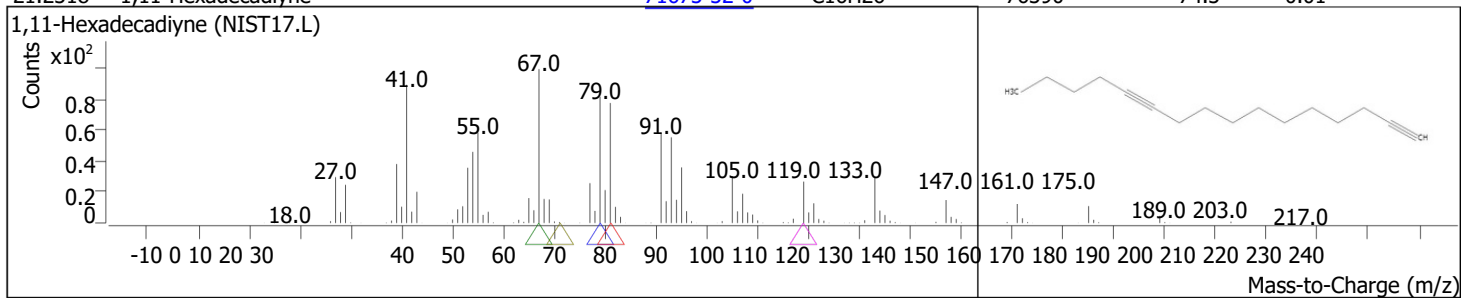
RT	Compound Name	CAS#	Formula	Area	Match Score	Sample	Sample
20.7511	Selina-3,7(11)-diene	6813-21-4	C15H24	476655	93.3	0.09	0.29



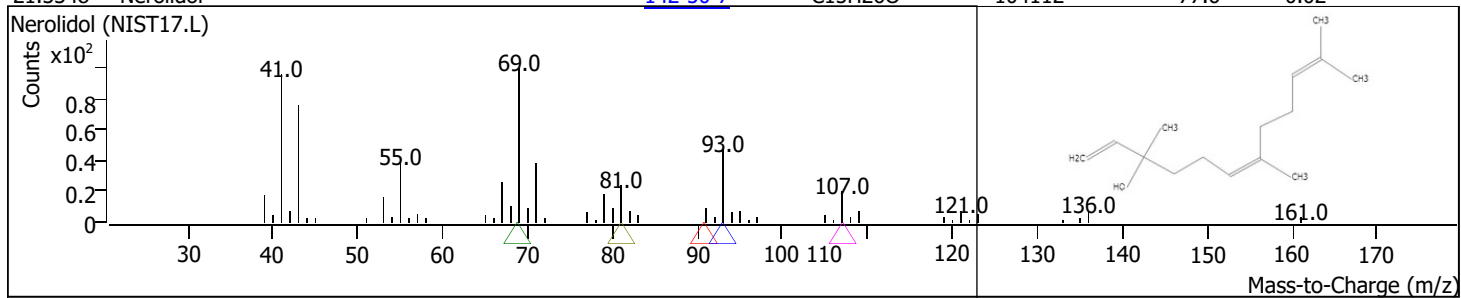
RT	Compound Name	CAS#	Formula	Area	Match Score	Sample	Sample
20.9914	Cyclohexanemethanol, 4-ethenyl-.alpha.,.alpha.,4-trimethyl-3-(1-methylethenyl)-, [1R-(1.alpha.,3.alpha.,4.beta.)]-	639-99-6	C15H26O	117677	79.9	0.02	0.07



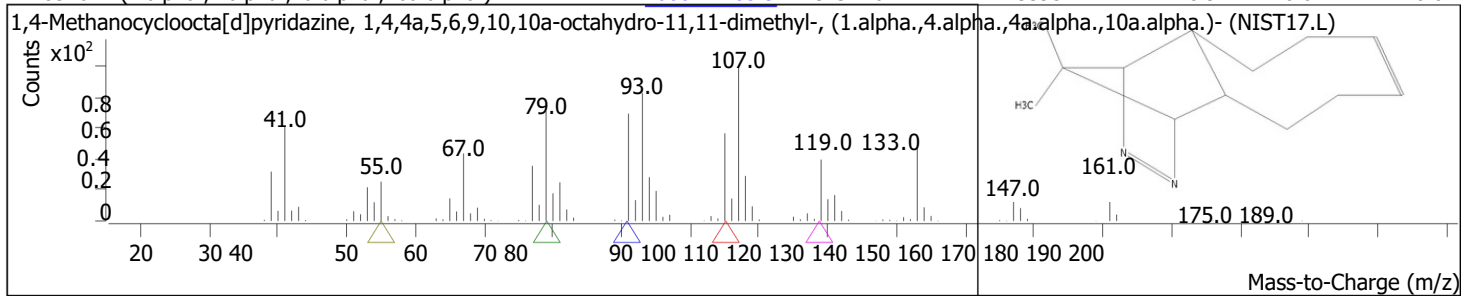
RT	Compound Name	CAS#	Formula	Area	Match Score	Sample	Sample
21.2318	1,11-Hexadecadiyne	71673-32-0	C16H26	76390	74.3	0.01	0.05



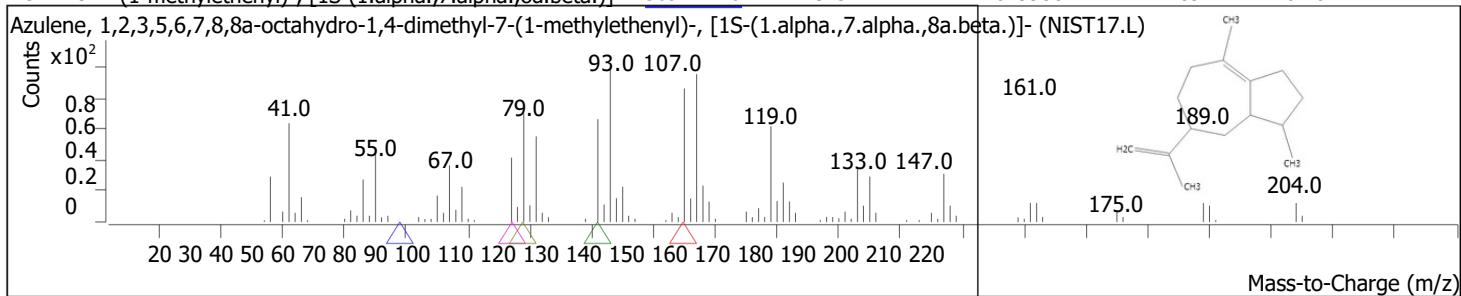
RT	Compound Name	CAS#	Formula	Area	Match Score	Sample	Sample
21.3348	Nerolidol	142-50-7	C15H26O	104112	77.6	0.02	0.06



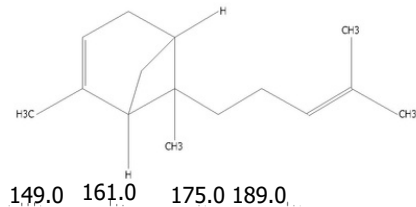
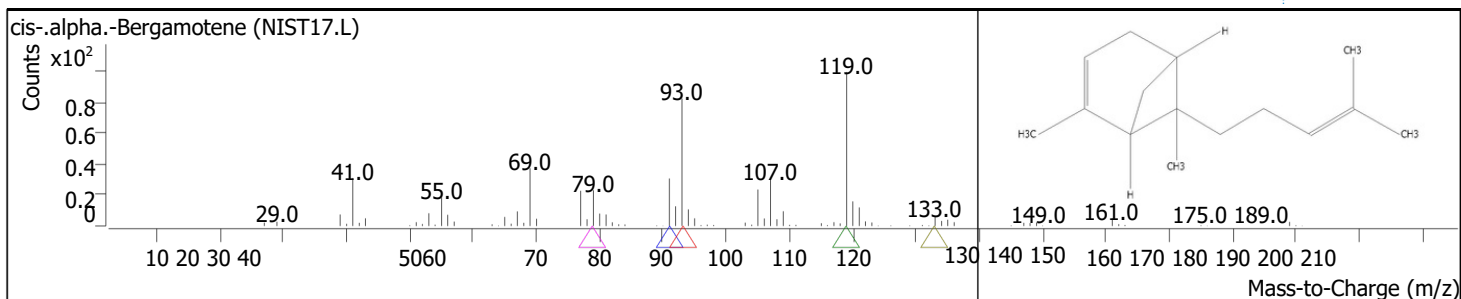
RT	Compound Name	CAS#	Formula	Area	Match Score	Sample	Sample
21.8326	1,4-Methanocycloocta[d]pyridazine, 1,4,4a,5,6,9,10,10a-octahydro-11,11-dimethyl-, (1.alpha.,4.alpha.,4a.alpha.,10a.alpha.)-	1000221-85-9	C13H20N2	73395	78.9	0.01	0.04



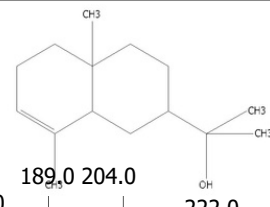
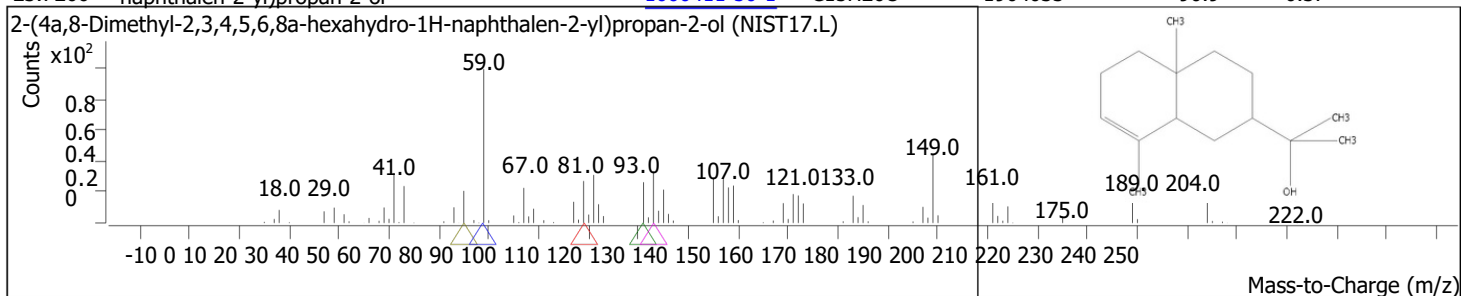
RT	Compound Name	CAS#	Formula	Area	Match Score	Sample	Sample
23.1429	Azulene, 1,2,3,5,6,7,8,8a-octahydro-1,4-dimethyl-7-(1-methylethenyl)-, [1S-(1.alpha.,7.alpha.,8a.beta.)]-	3691-11-0	C15H24	1029958	89.7	0.20	0.62



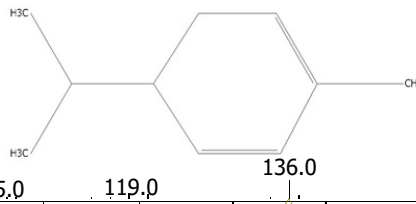
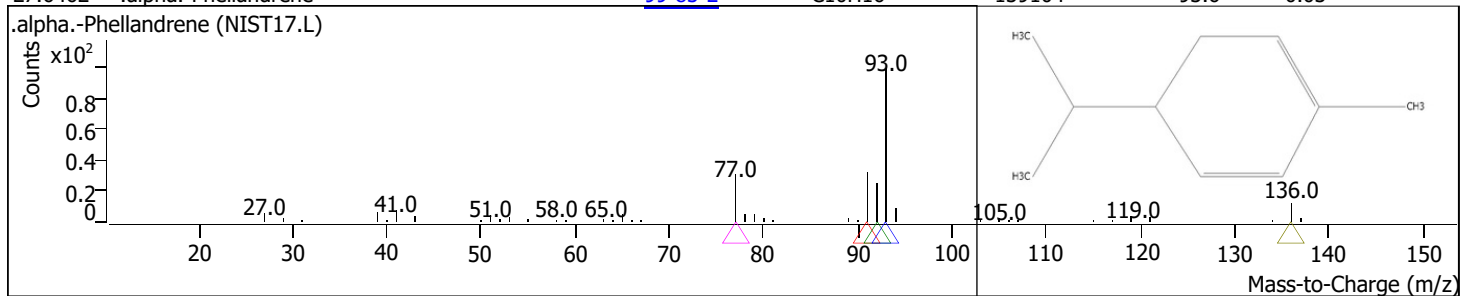
RT	Compound Name	CAS#	Formula	Area	Match Score	Sample	Sample
23.3432	cis-.alpha.-Bergamotene	18252-46-5	C15H24	114595	72.1	0.02	0.07



RT	Compound Name	CAS#	Formula	Area	Match Score	Sample	Sample
23.7266	2-(4a,8-Dimethyl-2,3,4,5,6,8a-hexahydro-1H-naphthalen-2-yl)propan-2-ol	1000411-50-1	C15H26O	1904033	90.9	0.37	1.14



RT	Compound Name	CAS#	Formula	Area	Match Score	Sample	Sample
27.6462	.alpha.-Phellandrene	99-83-2	C10H16	139104	93.6	0.03	0.08



RT	Compound Name	CAS#	Formula	Area	Match Score	Sample	Sample
34.5584	2-Methoxybenzoylformic acid, TMS	1000071-87-1	C12H16O4Si	36189	50.1	0.01	0.02

