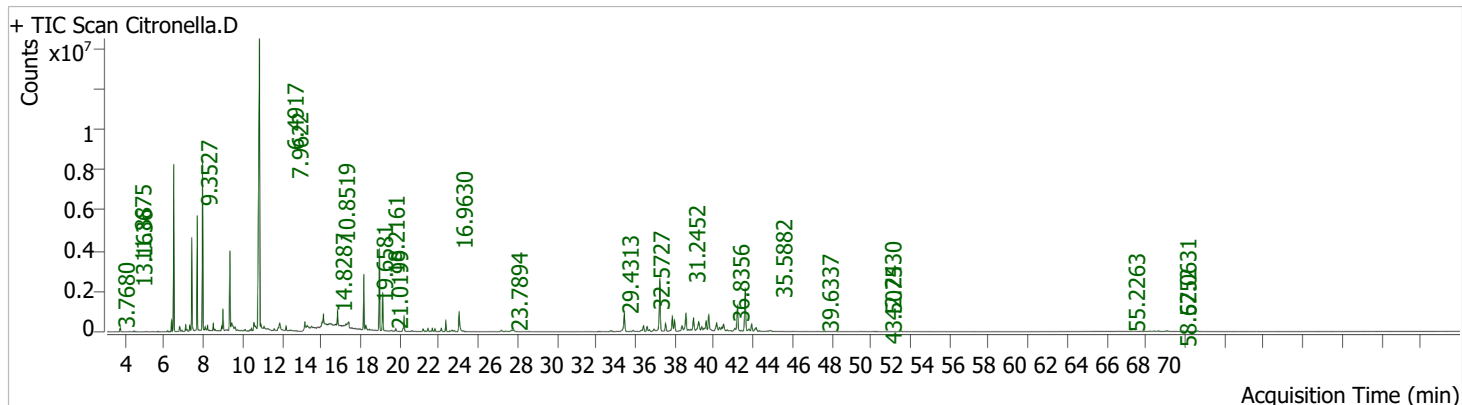


Batch Path D:\MassHunter\Data\A. Kapat\NMR
 Analysis File Name new2.uaf
 Analyst Name Basab-GCMS
 Analysis Time 20-03-2026 09:12:25
 Data File Name Citronella.D Data Path Name D:\MassHunter\Data\A. Kapat\NMR
 Sample Name Acq CIT-DHL-2508 / PEPPERWOODD Sample Type Sample
 Method File Acq Bio Oil pyrolysis4_new Acq Method Path D:\MassHunter\GCMS\methods\
 Time Instrument 10-03-2026 19:24:01 Operator
 Name GCMS Dilution 1



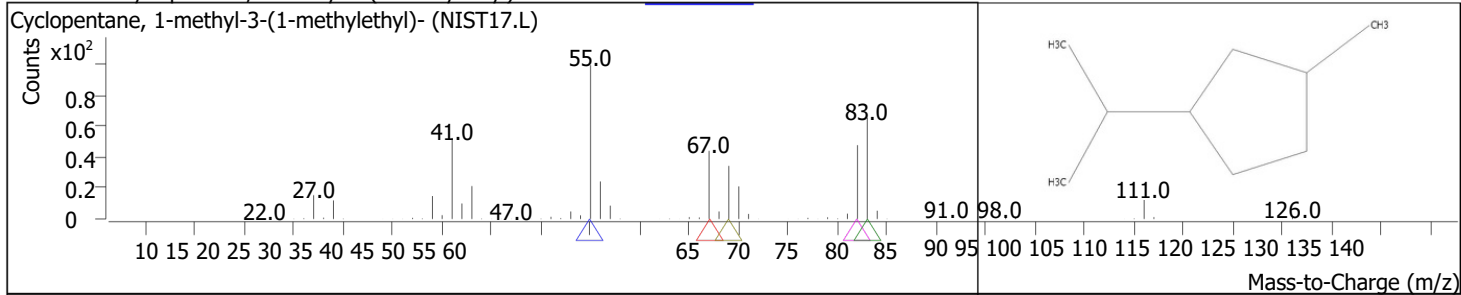
RT	Compound Name	CAS#	Formula	Area	Match Score	Sample	Sample
3.7680	Cyclopentane, 1-methyl-3-(1-methylethyl)-	88-3 24070-	C9H18	562726	97.1	0.23	1.03
4.4603	3-Methylcyclopentyl acetate	70-0 5989-	C8H14O2	122369	87.9	0.05	0.23
5.6620	Cyclohexene, 1-methyl-4-(1-methylethenyl)-, (S)-	54-8 1686-	C10H16	47303	93.2	0.02	0.09
6.1769	1,7-Octadiene, 2-methyl-6-methylene-	30-2 1124-	C10H16	148111	93.0	0.06	0.27
6.3028	Cyclohexane, 1-methyl-4-(1-methylethylidene)-	27-2 110-93-	C10H18	55133	88.8	0.02	0.10
6.3715	5-Hepten-2-one, 6-methyl-	0 123-35-3	C8H14O	1135774	94.4	0.47	2.09
6.4917	.beta.-Myrcene	99-83-2	C10H16	16305750	96.8	6.73	29.99
6.7892	.alpha.-Phellandrene	6876-07-9	C10H16	742137	90.6	0.31	1.36
6.9036	Isomycorene	4497-92-1	C10H16	170903	89.7	0.07	0.31
7.0982	Bicyclo[4.1.0]hept-2-ene, 3,7,7-trimethyl-, (1S-cis)-	15232-95-8	C10H16	757337	97.0	0.31	1.39
7.1669	Cyclohexene,3-(2-propenyl)-	3479-89-8	C9H14	243880	83.0	0.10	0.45
7.3042	1,3,5-Cycloheptatriene, 3,7,7-trimethyl-	138-86-3	C10H14	839733	94.5	0.35	1.54
7.4072	Limonene	3779-61-1	C10H16	9576110	96.6	3.95	17.61
7.6818	trans-.beta.-Ocimene	3338-55-4	C10H16	10889784	98.6	4.50	20.03
7.9622	1,3,6-Octatriene, 3,7-dimethyl-, (Z)-	50876-31-8	C10H16	17761340	98.8	7.33	32.66
8.0194	Cyclohexane, 1,1,3,5-tetramethyl-, trans-	81051-15-2	C10H20	123783	71.8	0.05	0.23
8.0881	Cyclopropane, 2-(1,1-dimethyl-2-propenyl)-1,1-dimethyl-	99-85-4	C10H18	533488	85.4	0.22	0.98
8.2083	.gamma.-Terpinene	586-67-4	C10H16	635705	97.3	0.26	1.17
8.5001	Cyclohexene, 4-methyl-1-(1-methylethenyl)-	5989-33-3	C10H16	850390	97.1	0.35	1.56
8.5859	2-Furanmethanol, 5-ethenyltetrahydro-.alpha.,.alpha.,5-trimethyl-, cis-	1000465-71-1	C10H18O2	196112	87.7	0.08	0.36
8.8320	Myrtanyl isobutyrate	99805-90-0	C14H24O2	33596	74.8	0.01	0.06
8.9235	Cyclohexene, 4-methyl-3-(1-methylethylidene)-	99805-90-0	C10H16	517563	97.1	0.21	0.95
8.9922	Cyclohexene, 4-methyl-3-(1-methylethylidene)-	81051-15-2	C10H16	2474552	97.5	1.02	4.55
9.2096	Cyclopropane, 2-(1,1-dimethyl-2-propenyl)-1,1-dimethyl-	78-70-6	C10H18	32469	72.3	0.01	0.06
9.3527	Linalool	78-70-6	C10H18O	9076735	97.7	3.75	16.69
9.4385	Linalool	16409-43-1	C10H18O	2150616	92.3	0.89	3.96
9.6216	2H-Pyran, tetrahydro-4-methyl-2-(2-methyl-1-propenyl)-	1000374-16-8	C10H18O	750993	77.7	0.31	1.38
9.7303	cis-p-mentha-1(7),8-dien-2-ol	929-53-3	C10H16O	117700	69.2	0.05	0.22
9.9134	1,4-Decadiyne	16409-43-1	C10H14	52833	70.6	0.02	0.10
10.0679	2H-Pyran, tetrahydro-4-methyl-2-(2-methyl-1-propenyl)-		C10H18O	78839	81.7	0.03	0.14

RT	Compound Name	CAS#	Formula	Area	Match Score	Sample	Sample
10.1252	2,4,6-Octatriene, 2,6-dimethyl-, (E,E)- Bicyclo[3.2.1]octane, 2,3-bis(methylene)- 1,7-	3016-19-1 49826-49826	C10H16	201925	89.5	0.08	0.37
10.2682	Octadiene-3,6-diol, 2,6-dimethyl- 1,4-Hexadiene, 5-	54-2 51276-51276	C10H14	30776	77.1	0.01	0.06
10.3769	methyl-3-(1-methylethylidene)- Cyclohexanol, 5-	33-6 113687-113687	C10H18O2	210067	79.3	0.09	0.39
10.4513	methyl-2-(1-methylethenyl)-	24-4 7786-7786	C10H16	294209	96.1	0.12	0.54
10.5715	Cyclopropanemethanol, 2,2-dimethyl-3-(2-methyl-1-propenyl)-	67-6	C10H18O	1582157	97.6	0.65	2.91
10.6573	6-Octenal, 3,7-dimethyl-, (R)-	5617-92-5	C10H18O	704060	70.5	0.29	1.29
10.8519	Cyclohexanol, 5-methyl-2-(1-methylethenyl)-	2385-77-5	C10H18O	54374288	98.8	22.45	100.00
10.9262	Cyclohexanone, 5-methyl-2-(1-methylethyl)-	7786-67-6	C10H18O	1097237	91.5	0.45	2.02
11.0865	Cyclohexane, 1-methylene-4-(1-methylethenyl)-	10458-14-7	C10H18O	520331	91.7	0.21	0.96
11.2925	Isoneral	499-97-8	C10H16	48531	69.4	0.02	0.09
11.6014	3-Cyclohexene-1-methanol, .alpha.,.alpha.,4-trimethyl-, (R)-	1000414-18-0	C10H16O	156120	91.2	0.06	0.29
11.8875	Decanal	7785-53-7	C10H18O	1913530	94.7	0.79	3.52
12.2080	2,6,6-Trimethyl-bicyclo[3.1.1]hept-3-ylamine	112-31-2	C10H20O	481795	95.9	0.20	0.89
12.3968	Isopulegol acetate	69460-11-3	C10H19N	160699	72.1	0.07	0.30
12.7630	Neral	57576-09-7	C12H20O2	39350	78.8	0.02	0.07
13.1636	Neral	106-26-3	C10H16O	649485	96.3	0.27	1.19
13.2837	2-Cyclohexen-1-one, 3-methyl-6-(1-methylethyl)-	106-26-3	C10H16O	445472	89.5	0.18	0.82
13.5069	Citronellol	89-81-6	C10H16O	192951	84.9	0.08	0.35
14.1134	Geraniol	106-22-9	C10H20O	3056646	93.7	1.26	5.62
14.4396	Geranyl formate	106-24-1	C10H18O	439800	73.0	0.18	0.81
14.8287	Cyclopropane, 1,1-dimethyl-2-(2-methyl-2-propenyl)-	105-86-2	C11H18O2	1747302	95.3	0.72	3.21
15.2464	(R)-(+)-Citronellic acid	69147-03-1	C9H16	286993	76.9	0.12	0.53
15.4009	6-Methyl-hept-2-yn-4-ol 2H-Pyran, 3,6-dihydro-4-	18951-85-4	C10H18O2	973753	90.7	0.40	1.79
15.5668	methyl-2-(2-methyl-1-propenyl)-	60018-69-1	C8H14O	60796	66.7	0.03	0.11
15.7213	Bicyclo[3.1.1]hept-3-ene, 4,6,6-trimethyl-2-vinyloxy-	1786-08-9	C10H16O	30415	64.8	0.01	0.06
15.9731	2,6-Octadiene, 2,6-dimethyl-	1000163-23-1	C12H18O	70377	72.2	0.03	0.13
16.1734	Phenol, 2-methoxy-3-(2-propenyl)-	2792-39-4	C10H18	6018520	97.7	2.48	11.07
16.2706	2,6-Octadien-1-ol, 3,7-dimethyl-, acetate, (Z)-	1941-12-4	C10H12O2	787825	90.5	0.33	1.45
16.4480	DL-Arabinose	141-12-8	C12H20O2	114190	84.7	0.05	0.21
16.5739	2,6-Octadien-1-ol, 3,7-dimethyl-, acetate, (Z)-	20235-19-2	C5H10O5	40052	60.7	0.02	0.07
16.9630	Cyclohexane, 1-ethenyl-1-methyl-2,4-bis(1-methylethenyl)-	141-12-8	C12H20O2	9758569	96.2	4.03	17.95
17.1289	2-Decen-1-ol, (E)-	110823-68-2	C15H24	4657419	97.1	1.92	8.57
17.5753	Bicyclo[7.2.0]undec-4-ene, 4,11,11-trimethyl-8-methylene-, [1R*(1R*,4Z,9S*)]-	18409-18-2	C10H20O	112303	82.8	0.05	0.21
17.7927	1,3,6,10-Dodecatetraene, 3,7,11-trimethyl-, (Z,E)-	118-65-0	C15H24	365549	94.0	0.15	0.67
18.2161	Humulene Naphthalene, 1,2,3,4,4a,5,6,8a-octahydro-	26560-14-5	C15H24	2102808	97.3	0.87	3.87
18.6396	4a,8-dimethyl-2-(1-methylethenyl)-, [2R-(2.alpha.,4a.alpha.,8a.beta.)]- (R)-1-Methyl-4-(6-methylhept-5-en-2-yl)cyclohexa-1,4-diene	6753-98-6	C15H24	151398	87.0	0.06	0.28
19.1889	Naphthalene, 1,2,3,4,4a,5,6,8a-octahydro-4a,8-dimethyl-2-(1-methylethenyl)-, [2R-(2.alpha.,4a.alpha.,8a.beta.)]-	473-13-2	C15H24	449227	91.3	0.19	0.83
19.2919	Cycloisolongifolene	28976-67-2	C15H24	74933	82.5	0.03	0.14
19.4349	Naphthalene, 1,2,3,4,4a,5,6,8a-octahydro-4a,8-dimethyl-2-(1-methylethenyl)-, [2R-(2.alpha.,4a.alpha.,8a.beta.)]-	473-13-2	C15H24	490376	94.1	0.20	0.90
19.5780	.alpha.-Muuroolene	1000151-99-7	C15H24	64535	83.9	0.03	0.12
19.6581	1,6,10-Dodecatetraene, 7,11-dimethyl-3-methylene-	473-13-2	C15H24	459430	94.5	0.19	0.84
19.7897	Naphthalene, 1,2,4a,5,6,8a-hexahydro-4,7-dimethyl-1-(1-methylethyl)-	31983-22-9	C15H24	402165	92.5	0.17	0.74
20.0014		77129-48-7	C15H24	43862	82.2	0.02	0.08
20.1158		483-75-0	C15H24	553716	94.7	0.23	1.02

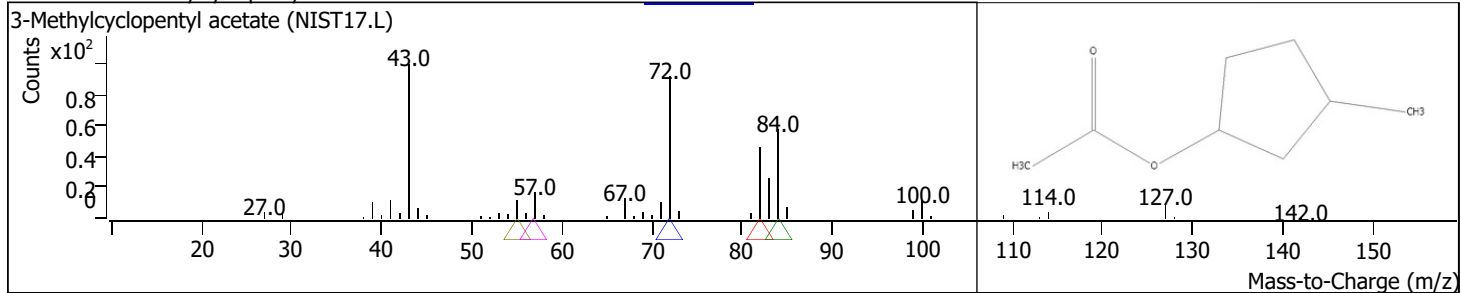
RT	Compound Name	Naphthalene, 1,2,3,5,6,8a-	CAS#	Formula	Area	Match Score	Sample	Sample
20.3447	hexahydro-4,7-dimethyl-1-(1-methylethyl)-, (1S-cis)-		483-76-1	C15H24	1306207	95.3	0.54	2.40
20.5507	Ylangene		14912-44-8	C15H24	87814	73.8	0.04	0.16
20.6709	1,3a-Ethano-3aH-indene, 1,2,3,6,7,7a-hexahydro-2,2,4,7a-tetramethyl-, [1R-(1.alpha.,3a.alpha.,7a.alpha.)]-.beta.-Bisabolene		4545-68-0	C15H24	329397	85.0	0.14	0.61
20.7510	Cyclohexanemethanol, 4-ethenyl-.alpha.,.alpha.,4-trimethyl-3-(1-methylethenyl)-, [1R-(1.alpha.,3.alpha.,4.beta.)]-		495-61-4	C15H24	227668	78.2	0.09	0.42
21.0199	Cyclohexanemethanol, 4-ethenyl-.alpha.,.alpha.,4-trimethyl-3-(1-methylethenyl)-, [1R-(1.alpha.,3.alpha.,4.beta.)]-		639-99-6	C15H26O	3853908	94.9	1.59	7.09
21.2545	2-(4a,8-Dimethyl-2,3,4,5,6,7-hexahydro-1H-naphthalen-2-yl)propan-2-ol		639-99-6	C15H26O	173417	70.8	0.07	0.32
23.1714	Germacrene D		1000411-50-0	C15H26O	285469	86.7	0.12	0.53
23.3946	2-Naphthalenemethanol, decahydro-.alpha.,.alpha.,4a-trimethyl-8-methylene-, [2R-(2.alpha.,4a.alpha.,8a.beta.)]-		23986-74-5	C15H24	116437	76.5	0.05	0.21
23.6750	Caryophyllene		473-15-4	C15H26O	255558	88.9	0.11	0.47
23.7894	1-Isopropenyl-3-propenylcyclopentane		44-5	C15H24	521442	75.9	0.22	0.96
28.1439	1,6,10-Dodecatriene, 7,11-dimethyl-3-methylene-		1000192-81-2	C11H18	69018	74.8	0.03	0.13
28.7447	5-Hepten-1-ol, 2-ethenyl-6-methyl-1,3-Bis-(2-cyclopropyl,2-methylcyclopropyl)-but-2-en-1-one		77129-48-7	C15H24	292858	86.4	0.12	0.54
29.4313	Bicyclo[5.2.0]nonane, 4-methylene-2,8,8-trimethyl-2-vinyl-		18479-48-6	C10H18O	3899788	88.0	1.61	7.17
29.7289	Bicyclo[5.2.0]nonane, 4-methylene-2,8,8-trimethyl-2-vinyl-		1000222-08-6	C18H26O	55636	78.0	0.02	0.10
29.8834	3-Heptadecen-5-yne, (Z)-		1000159-38-2	C15H24	168757	83.0	0.07	0.31
30.3182	Citronellol		74744-55-1	C17H30	288437	82.1	0.12	0.53
30.4155	2-Pentadecen-4-yne, (Z)-		106-22-9	C10H20O	1132330	86.3	0.47	2.08
30.5929	6,11-Dimethyl-2,6,10-dodecatrien-1-ol		74646-33-6	C15H26	924275	83.0	0.38	1.70
30.7131	6,11-Dimethyl-2,6,10-dodecatrien-1-ol		1000196-53-3	C14H24O	343073	80.7	0.14	0.63
30.9419	trans-Farnesol		1000196-53-3	C14H24O	440702	78.7	0.18	0.81
31.2452	2,6,10-Dodecatrien-1-ol, 3,7,11-trimethyl-, (Z,E)-		106-28-5	C15H26O	9837919	90.4	4.06	18.09
31.5370	5-(1-Bromo-1-methyl-ethyl)-2-methyl-cyclohexanol		3790-71-4	C15H26O	1270435	84.2	0.52	2.34
31.8804	trans-Farnesol		1000188-65-7	C10H19BrO	2728541	87.0	1.13	5.02
31.9891	2,6-Octadien-1-ol, 2,7-dimethyl-		106-28-5	C15H26O	2083118	89.2	0.86	3.83
32.3725	trans-Geranylgeraniol		22410-74-8	C10H18O	1090744	81.7	0.45	2.01
32.5727	2,6-Octadien-1-ol, 3,7-dimethyl-, (Z)-		24034-73-9	C20H34O	3602292	86.7	1.49	6.62
32.6986	2,6-Octadien-1-ol, 3,7-dimethyl-, (Z)-		106-25-2	C10H18O	123824	76.9	0.05	0.23
32.8131	2,6,10-Dodecatrien-1-ol, 3,7,11-trimethyl-		106-25-2	C10H18O	107653	79.5	0.04	0.20
32.9561	Neral		4602-84-0	C15H26O	2367126	83.0	0.98	4.35
33.2308	5-(1-Bromo-1-methyl-ethyl)-2-methyl-cyclohexanol		106-26-3	C10H16O	2050128	85.0	0.85	3.77
33.3795	13-Tetradecen-11-yn-1-ol		1000188-65-7	C10H19BrO	449231	83.8	0.19	0.83
33.4997	1H-3a,7-Methanoazulene, octahydro-1,4,9,9-tetramethyl-		1000131-00-4	C14H24O	169287	76.8	0.07	0.31
33.6027	6,11-Dimethyl-2,6,10-dodecatrien-1-ol		25491-20-7	C15H26	1395816	82.3	0.58	2.57
33.7343	2-Isopropenyl-5-methylhex-4-enal		1000196-53-3	C14H24O	2474470	87.1	1.02	4.55
34.1406	1-Bromo-3,7-dimethyl-2,6-octadiene		75697-98-2	C10H16O	2074219	85.7	0.86	3.81
34.2779	2,6-Octadien-1-ol, 3,7-dimethyl-, (Z)-		35719-26-7	C10H17Br	807422	74.4	0.33	1.48
34.3981	Undec-10-ynoic acid, tridec-2-yn-1-yl ester		106-25-2	C10H18O	652547	88.5	0.27	1.20
34.4896	1-Bromo-3,7-dimethyl-2,6-octadiene		1000406-96-9	C24H40O2	1636579	80.9	0.68	3.01
34.6784	(1R)-cis-Verbenol		35719-26-7	C10H17Br	154601	82.6	0.06	0.28
34.8215	6,11-Dimethyl-2,6,10-dodecatrien-1-ol		13040-03-4	C10H16O	151342	69.4	0.06	0.28
35.0675	2,6,10-Dodecatrien-1-ol, 3,7,11-trimethyl-		1000196-53-3	C14H24O	686392	84.9	0.28	1.26
35.2049	1-Ethynyl-1-cyclooctanol		4602-84-0	C15H26O	5160986	85.8	2.13	9.49
35.3880			55373-76-7	C10H16O	140985	83.6	0.06	0.26

RT	Compound Name	CAS#	Formula	Area	Match Score	Sample	Sample
35.5882	ol 2,6,10-Dodecatrien-1-ol, 3,7,11-trimethyl-, (Z,E)- 2-	1000196-53-3	C14H24O	8275996	92.3	3.42	15.22
35.7885	Isopropenyl-5-methylhex-4-enal	3790-71-4	C15H26O	557075	82.8	0.23	1.02
35.9201	(+)-Dihydrocarveol, trifluoroacetate	75697-98-2	C10H16O	1356683	86.4	0.56	2.50
36.1490	6-Octen-1-yn-3-ol, 3,7-dimethyl-	1000462-97-6	C12H17F3O 2	1122474	84.7	0.46	2.06
36.3092	2,6,10-Dodecatrien-1-ol, 3,7,11-trimethyl-, (Z,E)-	29171-20-8	C10H16O	96593	78.3	0.04	0.18
36.8356	Bicyclo[3.1.1]hept-2-ene-2-ethanol, 6,6-dimethyl-	3790-71-4	C15H26O	356061	77.5	0.15	0.65
39.6337	Bicyclo[3.1.1]heptane, 2,6,6-trimethyl-3-(2-propenyl)-, (1.alpha.,2.beta.,3.alpha.,5.alpha.)-	128-50-7 50746-55-9	C11H18O	42117	64.9	0.02	0.08
42.2430	6,11-Dimethyl-2,6,10-dodecatrien-1-ol	1000196-53-3	C13H22	61638	69.8	0.03	0.11
43.5075	Verbenol	473-67-6	C14H24O	135121	84.4	0.06	0.25
55.2263	6,11-Dimethyl-2,6,10-dodecatrien-1-ol	1000196-53-3	C10H16O	85834	72.1	0.04	0.16
56.2105	2,6,10-Dodecatrien-1-ol, 3,7,11-trimethyl-	4602-84-0	C14H24O	92686	68.8	0.04	0.17
56.4451	Neral	106-26-3	C15H26O	101816	66.2	0.04	0.19
56.6396	2,6,10-Dodecatrien-1-ol, 3,7,11-trimethyl-, (Z,E)-	3790-71-4	C10H16O	107603	73.3	0.04	0.20
57.0631	2,6,10-Dodecatrien-1-ol, 3,7,11-trimethyl-	4602-84-0	C15H26O	199509	72.6	0.08	0.37
57.8813	2,6,10-Dodecatrien-1-ol, 3,7,11-trimethyl-	4602-84-0	C15H26O	119188	71.0	0.05	0.22
58.6252			C15H26O	139895	76.9	0.06	0.26

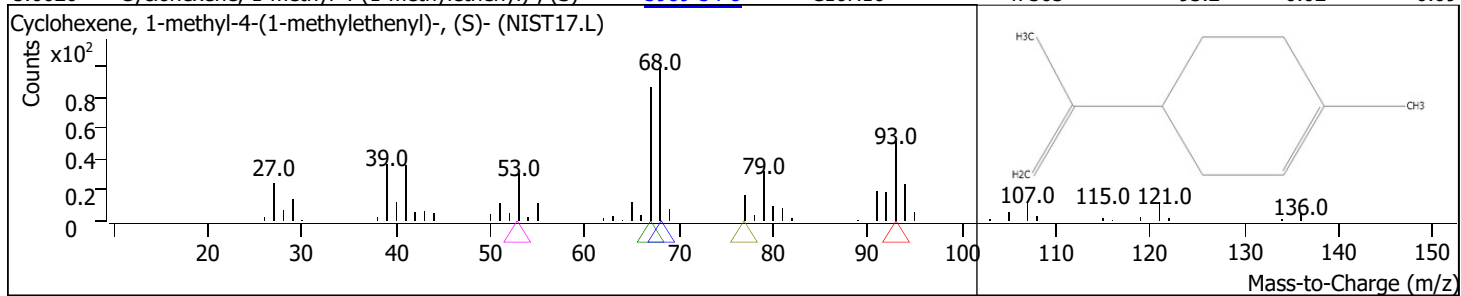
RT	Compound Name	CAS#	Formula	Area	Match Score	Sample	Sample
3.7680	Cyclopentane, 1-methyl-3-(1-methylethyl)-	53771-88-3	C9H18	562726	97.1	0.23	1.03



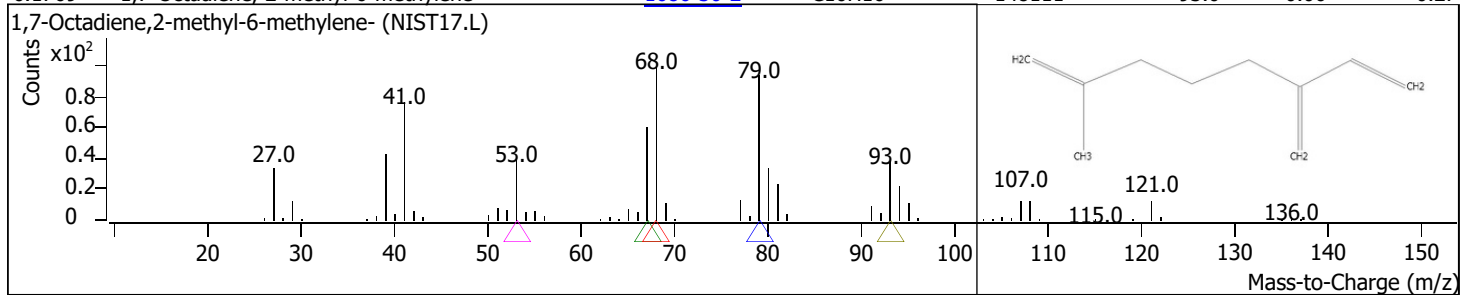
RT	Compound Name	CAS#	Formula	Area	Match Score	Sample	Sample
4.4603	3-Methylcyclopentyl acetate	24070-70-0	C8H14O2	122369	87.9	0.05	0.23



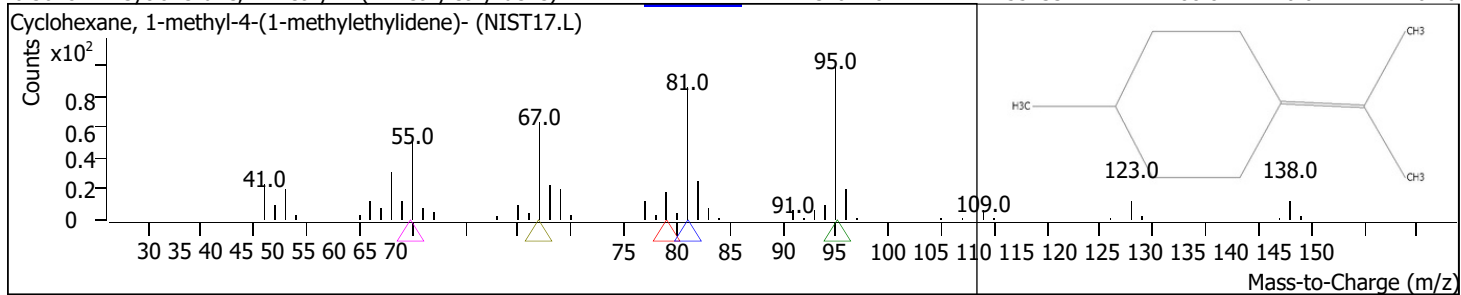
RT	Compound Name	CAS#	Formula	Area	Match Score	Sample	Sample
5.6620	Cyclohexene, 1-methyl-4-(1-methylethenyl)-, (S)-	5989-54-8	C10H16	47303	93.2	0.02	0.09



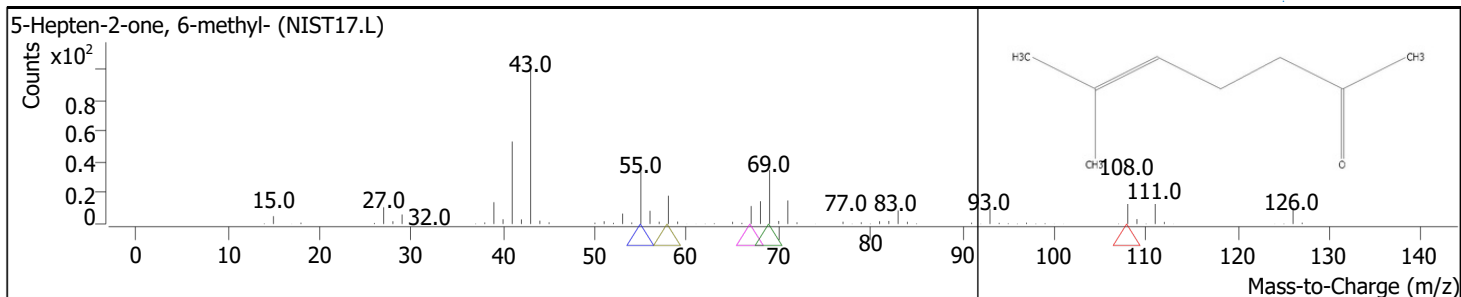
RT	Compound Name	CAS#	Formula	Area	Match Score	Sample	Sample
6.1769	1,7-Octadiene, 2-methyl-6-methylene-	1686-30-2	C10H16	148111	93.0	0.06	0.27



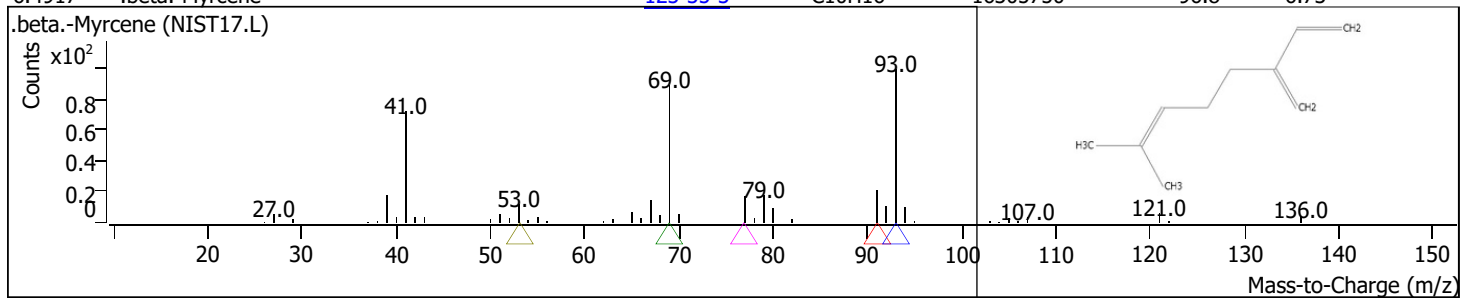
RT	Compound Name	CAS#	Formula	Area	Match Score	Sample	Sample
6.3028	Cyclohexane, 1-methyl-4-(1-methylethylidene)-	1124-27-2	C10H18	55133	88.8	0.02	0.10



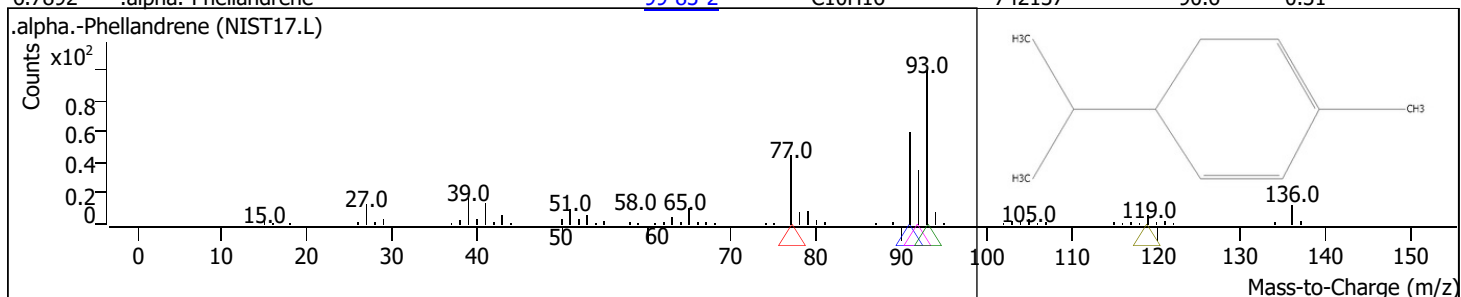
RT	Compound Name	CAS#	Formula	Area	Match Score	Sample	Sample
6.3715	5-Hepten-2-one, 6-methyl-	110-93-0	C8H14O	1135774	94.4	0.47	2.09



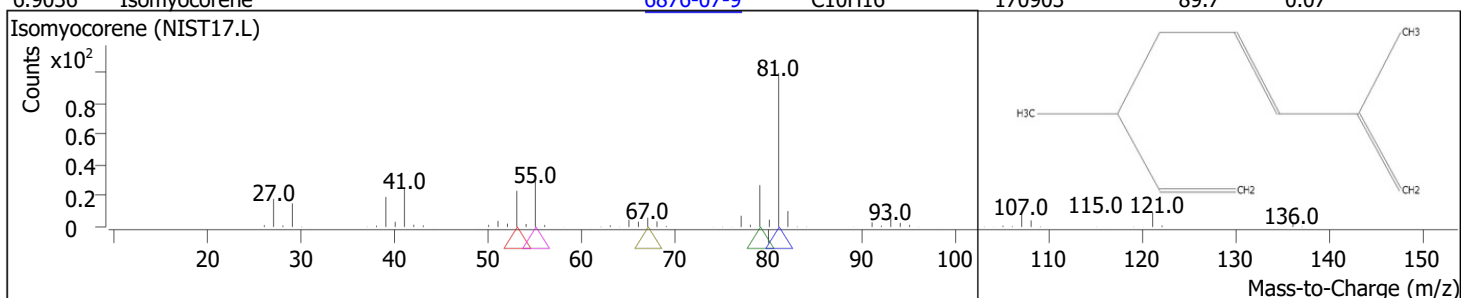
RT	Compound Name	CAS#	Formula	Area	Match Score	Sample
6.4917	.beta.-Myrcene	123-35-3	C10H16	16305750	96.8	6.73



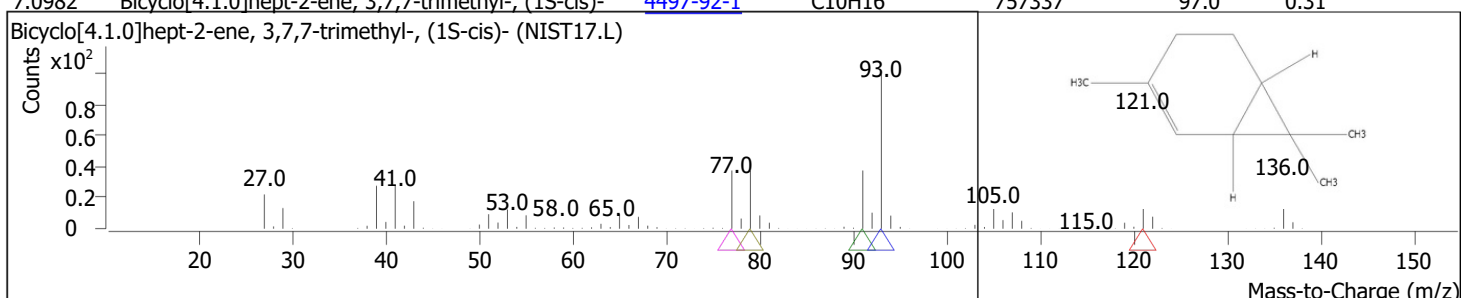
RT	Compound Name	CAS#	Formula	Area	Match Score	Sample
6.7892	.alpha.-Phellandrene	99-83-2	C10H16	742137	90.6	0.31



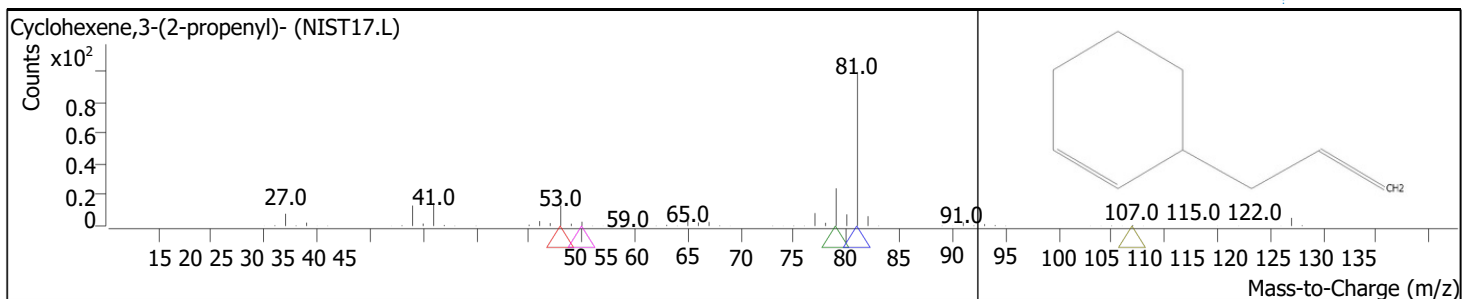
RT	Compound Name	CAS#	Formula	Area	Match Score	Sample
6.9036	Isomyocorene	6876-07-9	C10H16	170903	89.7	0.07



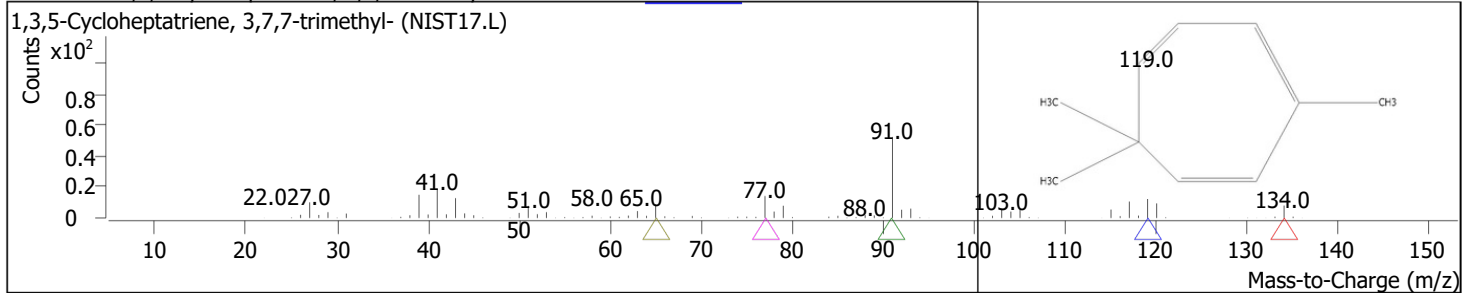
RT	Compound Name	CAS#	Formula	Area	Match Score	Sample
7.0982	Bicyclo[4.1.0]hept-2-ene, 3,7,7-trimethyl-, (1S-cis)-	4497-92-1	C10H16	757337	97.0	0.31



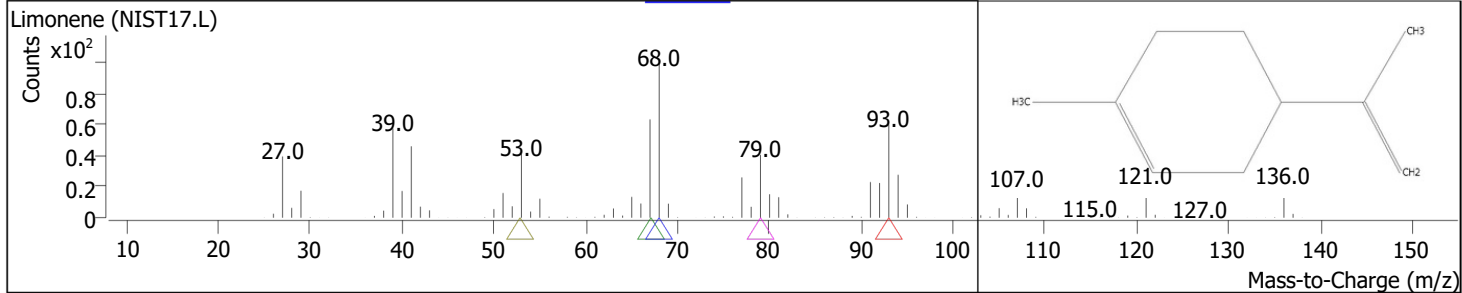
RT	Compound Name	CAS#	Formula	Area	Match Score	Sample
7.1669	Cyclohexene,3-(2-propenyl)-	15232-95-8	C9H14	243880	83.0	0.10



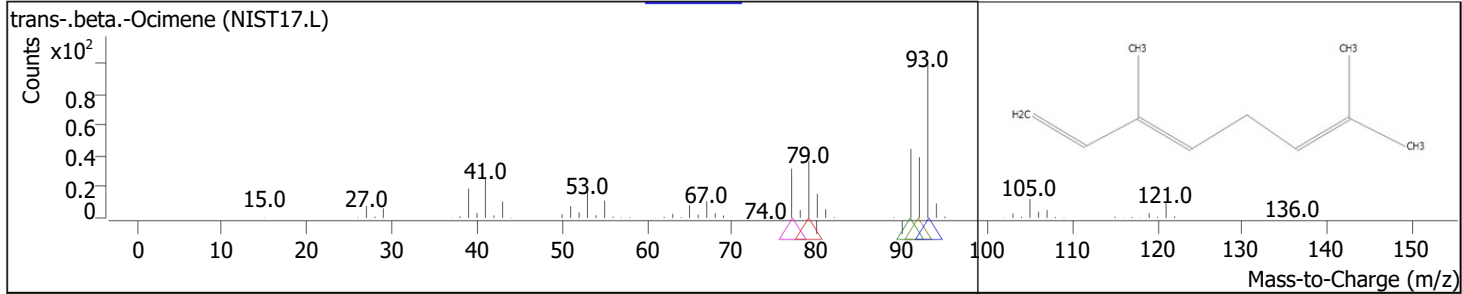
RT	Compound Name	CAS#	Formula	Area	Match Score	Sample	Sample
7.3042	1,3,5-Cycloheptatriene, 3,7,7-trimethyl-	3479-89-8	C10H14	839733	94.5	0.35	1.54



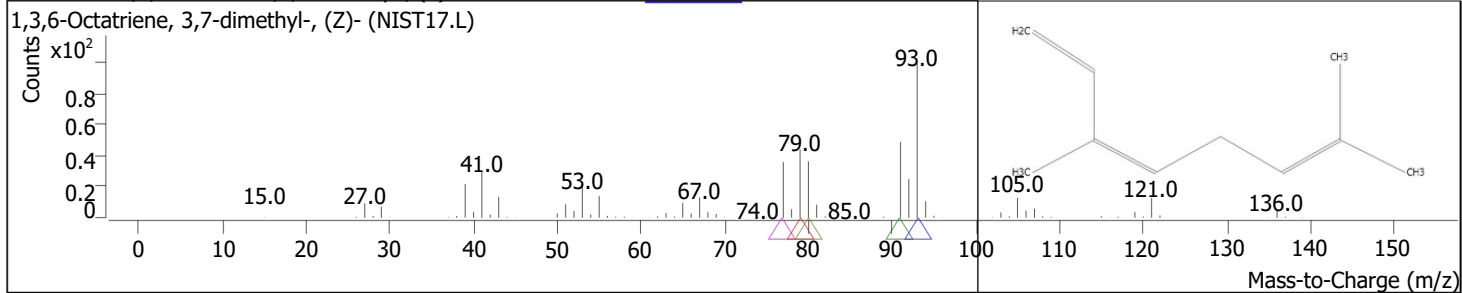
RT	Compound Name	CAS#	Formula	Area	Match Score	Sample	Sample
7.4072	Limonene	138-86-3	C10H16	9576110	96.6	3.95	17.61



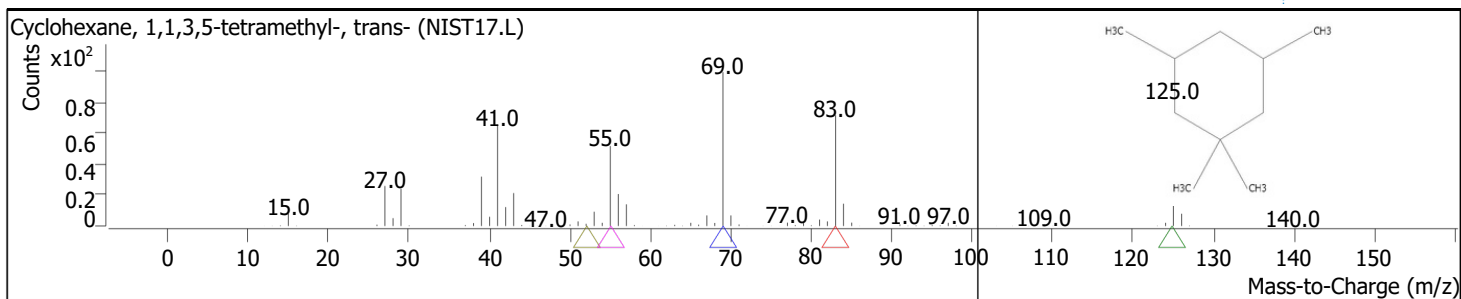
RT	Compound Name	CAS#	Formula	Area	Match Score	Sample	Sample
7.6818	trans-.beta.-Ocimene	3779-61-1	C10H16	10889784	98.6	4.50	20.03



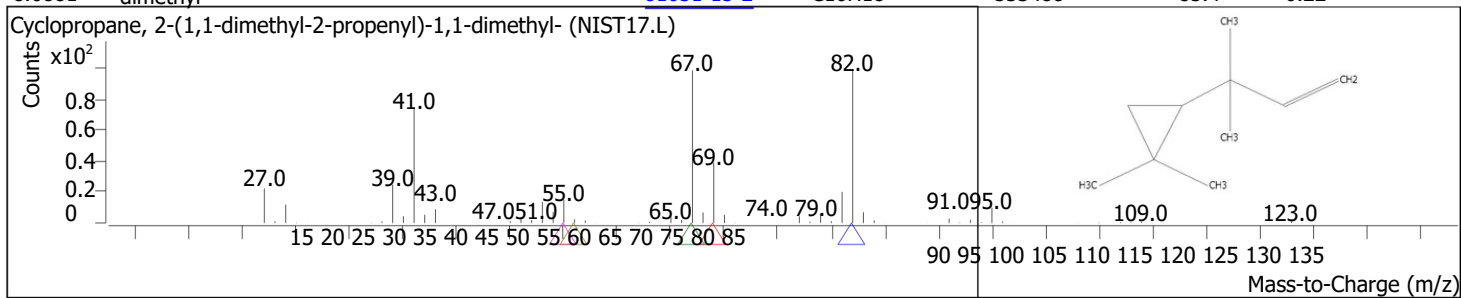
RT	Compound Name	CAS#	Formula	Area	Match Score	Sample	Sample
7.9622	1,3,6-Octatriene,3,7-dimethyl-, (Z)-	3338-55-4	C10H16	17761340	98.8	7.33	32.66



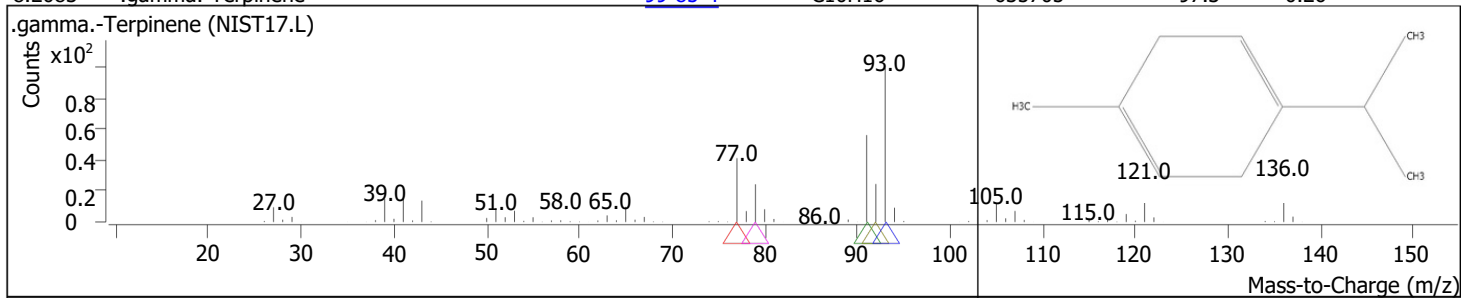
RT	Compound Name	CAS#	Formula	Area	Match Score	Sample	Sample
8.0194	Cyclohexane, 1,1,3,5-tetramethyl-, trans-	50876-31-8	C10H20	123783	71.8	0.05	0.23



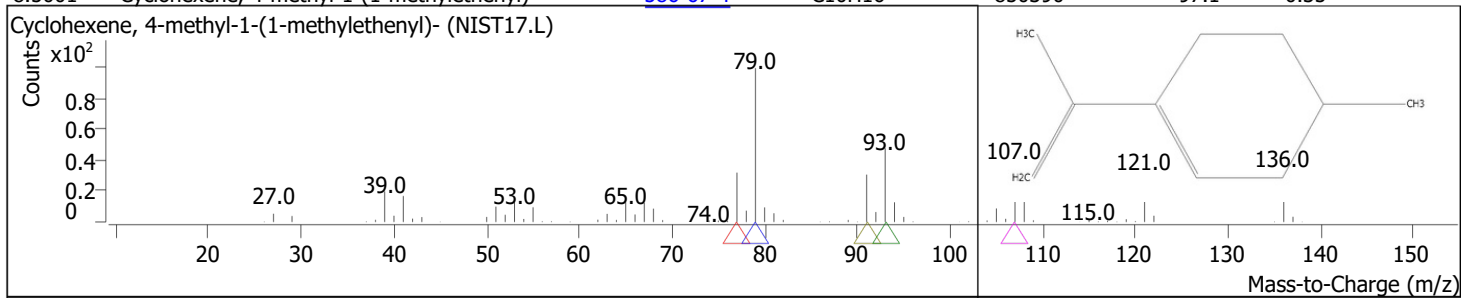
RT	Compound Name	CAS#	Formula	Area	Match Score	Sample	Sample
8.0881	Cyclopropane, 2-(1,1-dimethyl-2-propenyl)-1,1-dimethyl-	81051-15-2	C10H18	533488	85.4	0.22	0.98



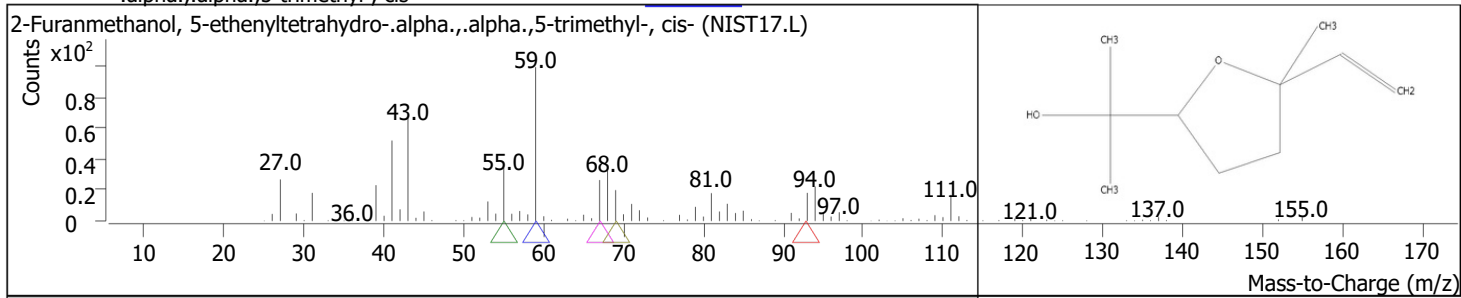
RT	Compound Name	CAS#	Formula	Area	Match Score	Sample	Sample
8.2083	.gamma.-Terpinene	99-85-4	C10H16	635705	97.3	0.26	1.17



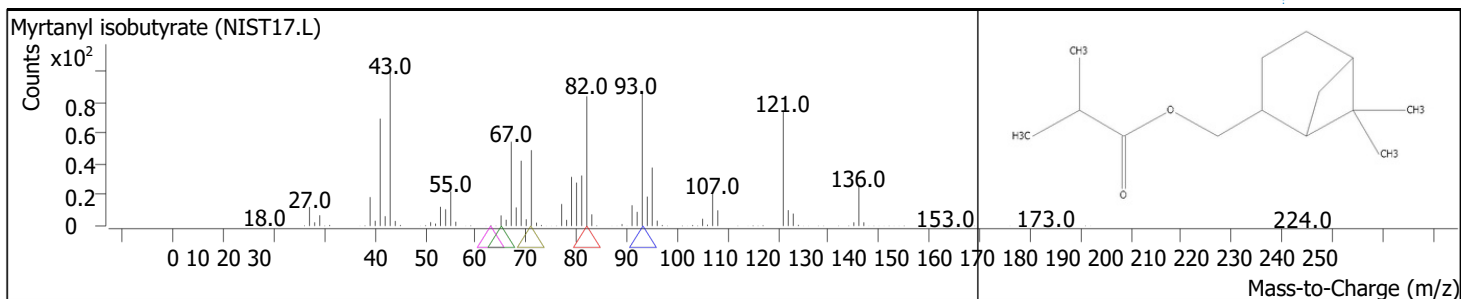
RT	Compound Name	CAS#	Formula	Area	Match Score	Sample	Sample
8.5001	Cyclohexene, 4-methyl-1-(1-methylethenyl)-	586-67-4	C10H16	850390	97.1	0.35	1.56



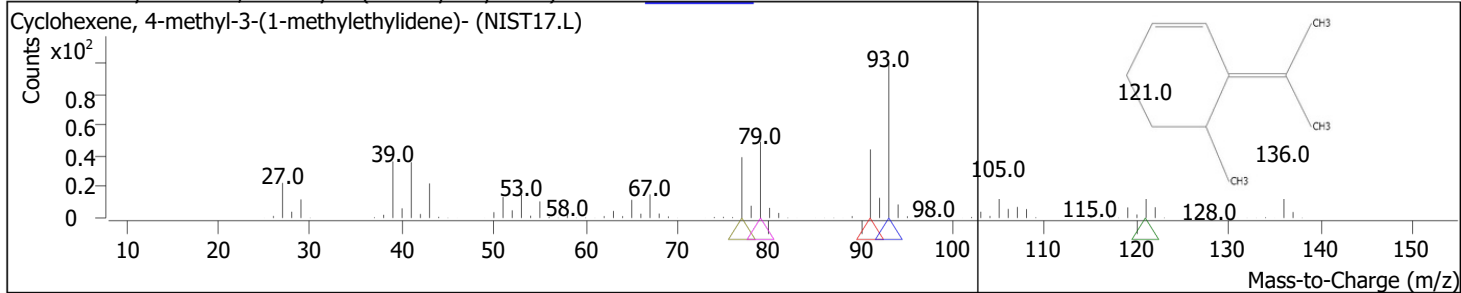
RT	Compound Name	CAS#	Formula	Area	Match Score	Sample	Sample
8.5859	2-Furanmethanol, 5-ethenyltetrahydro-.alpha.,.alpha.,5-trimethyl-, cis-	5989-33-3	C10H18O2	196112	87.7	0.08	0.36



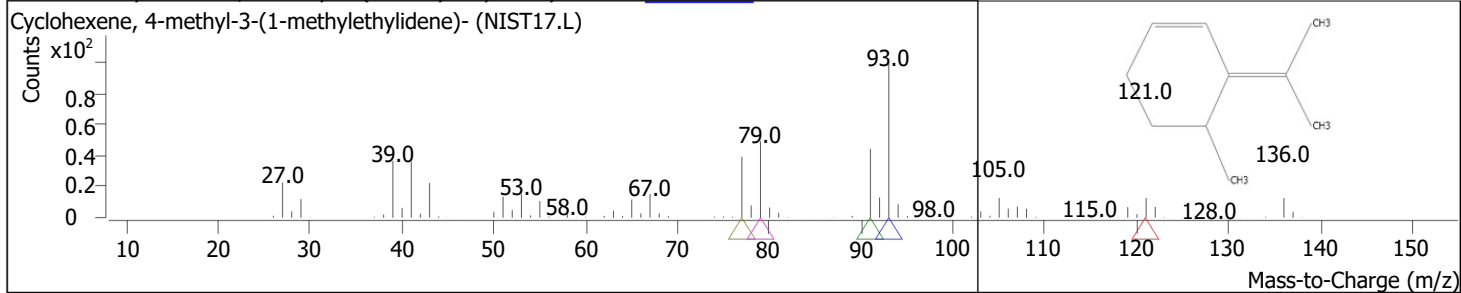
RT	Compound Name	CAS#	Formula	Area	Match Score	Sample	Sample
8.8320	Myrtanyl isobutyrate	1000465-71-1	C14H24O2	33596	74.8	0.01	0.06



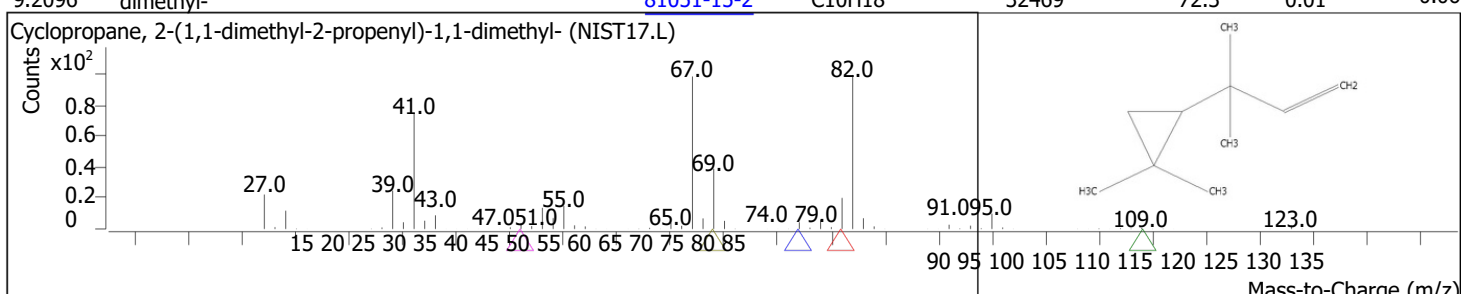
RT	Compound Name	CAS#	Formula	Area	Match Score	Sample	Sample
8.9235	Cyclohexene, 4-methyl-3-(1-methylethylidene)-	99805-90-0	C10H16	517563	97.1	0.21	0.95



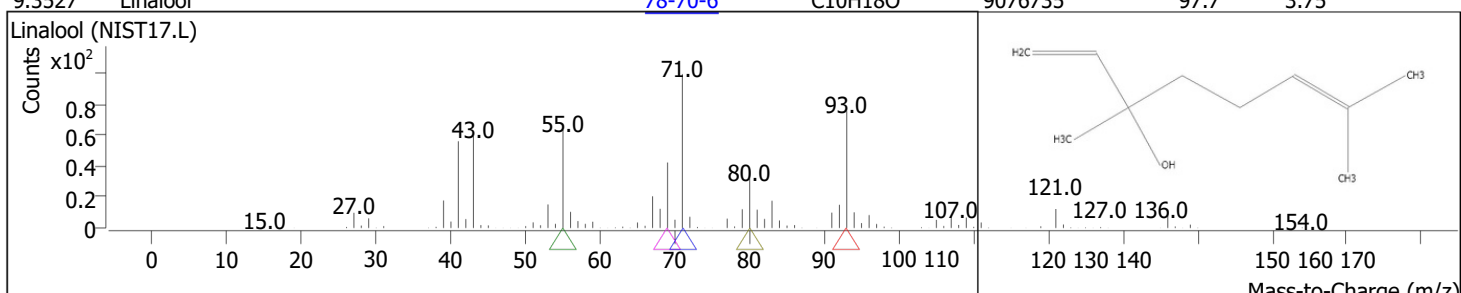
RT	Compound Name	CAS#	Formula	Area	Match Score	Sample	Sample
8.9922	Cyclohexene, 4-methyl-3-(1-methylethylidene)-	99805-90-0	C10H16	2474552	97.5	1.02	4.55



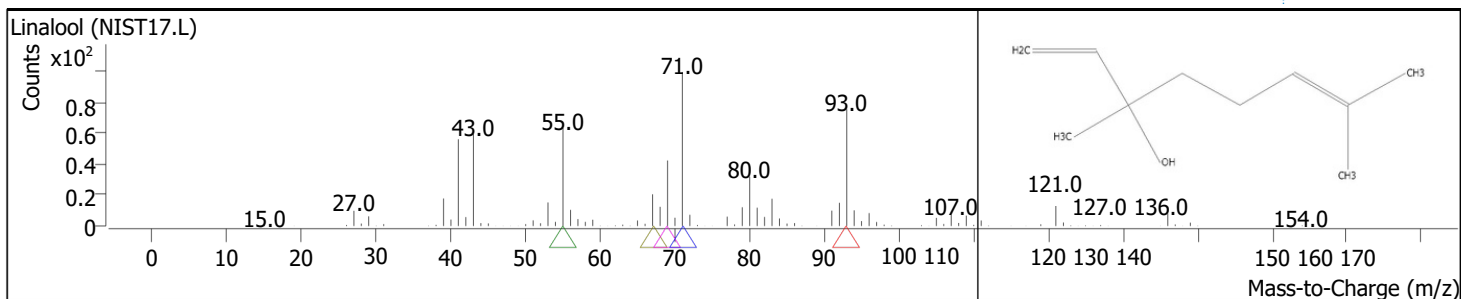
RT	Compound Name	CAS#	Formula	Area	Match Score	Sample	Sample
9.2096	Cyclopropane, 2-(1,1-dimethyl-2-propenyl)-1,1-dimethyl-	81051-15-2	C10H18	32469	72.3	0.01	0.06



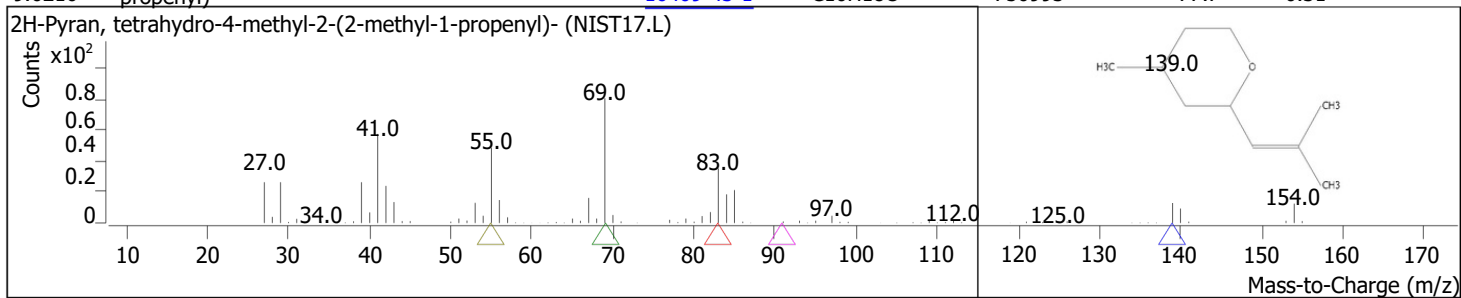
RT	Compound Name	CAS#	Formula	Area	Match Score	Sample	Sample
9.3527	Linalool	78-70-6	C10H18O	9076735	97.7	3.75	16.69



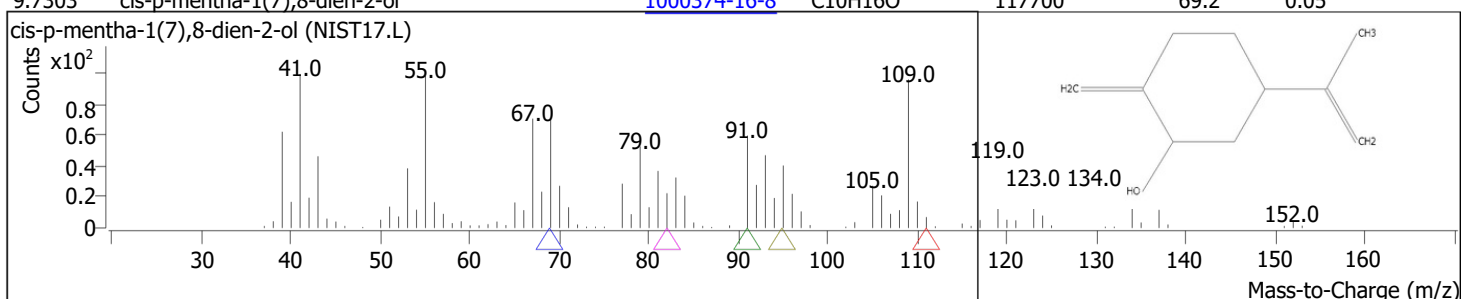
RT	Compound Name	CAS#	Formula	Area	Match Score	Sample	Sample
9.4385	Linalool	78-70-6	C10H18O	2150616	92.3	0.89	3.96



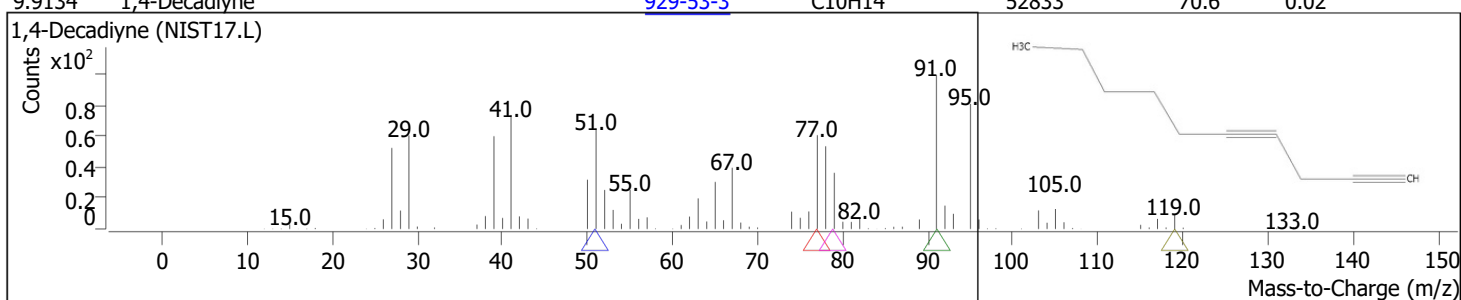
RT	Compound Name	CAS#	Formula	Area	Match Score	Sample	Sample
9.6216	2H-Pyran, tetrahydro-4-methyl-2-(2-methyl-1-propenyl)-	16409-43-1	C ₁₀ H ₁₈ O	750993	77.7	0.31	1.38



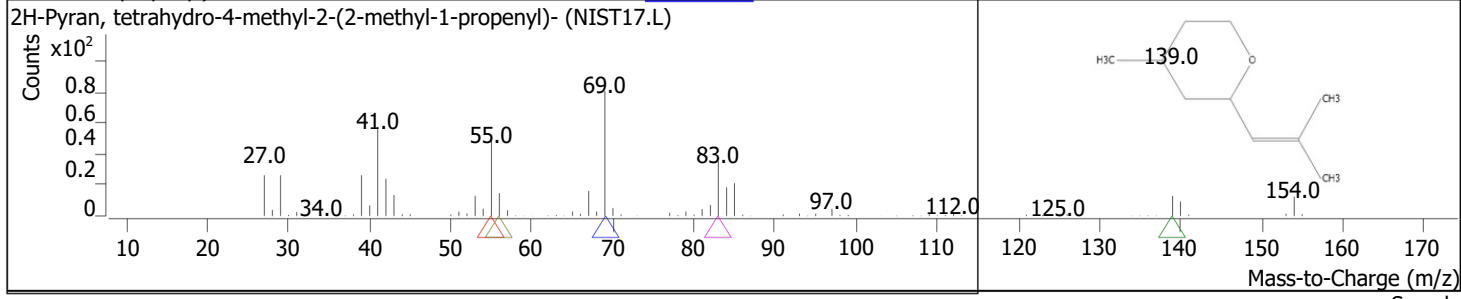
RT	Compound Name	CAS#	Formula	Area	Match Score	Sample	Sample
9.7303	cis-p-mentha-1(7),8-dien-2-ol	1000374-16-8	C ₁₀ H ₁₆ O	117700	69.2	0.05	0.22



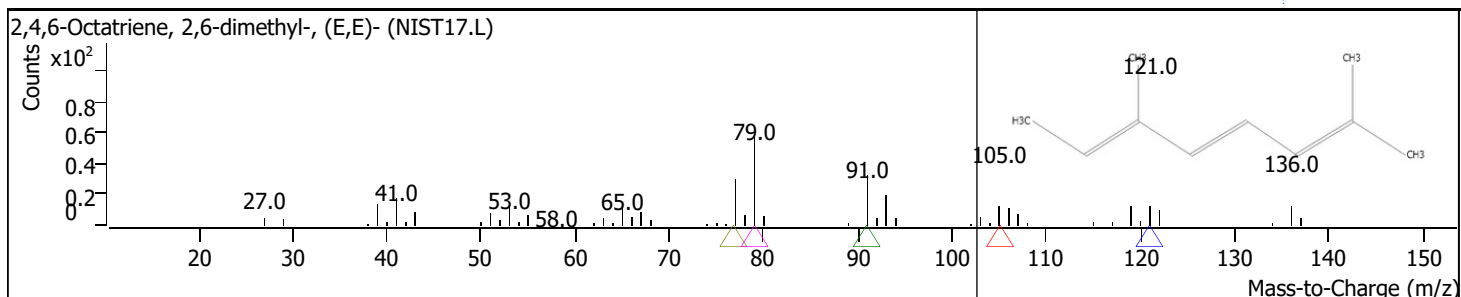
RT	Compound Name	CAS#	Formula	Area	Match Score	Sample	Sample
9.9134	1,4-Decadiyne	929-53-3	C ₁₀ H ₁₄	52833	70.6	0.02	0.10



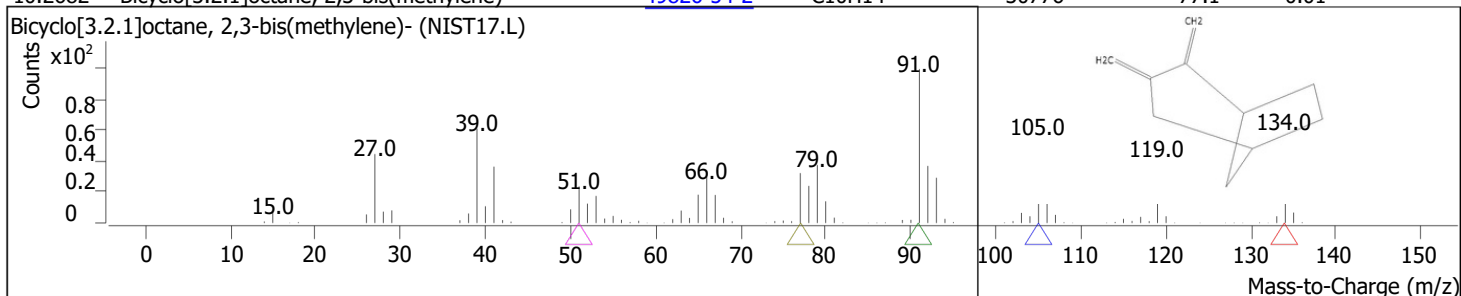
RT	Compound Name	CAS#	Formula	Area	Match Score	Sample	Sample
10.0679	2H-Pyran, tetrahydro-4-methyl-2-(2-methyl-1-propenyl)-	16409-43-1	C ₁₀ H ₁₈ O	78839	81.7	0.03	0.14



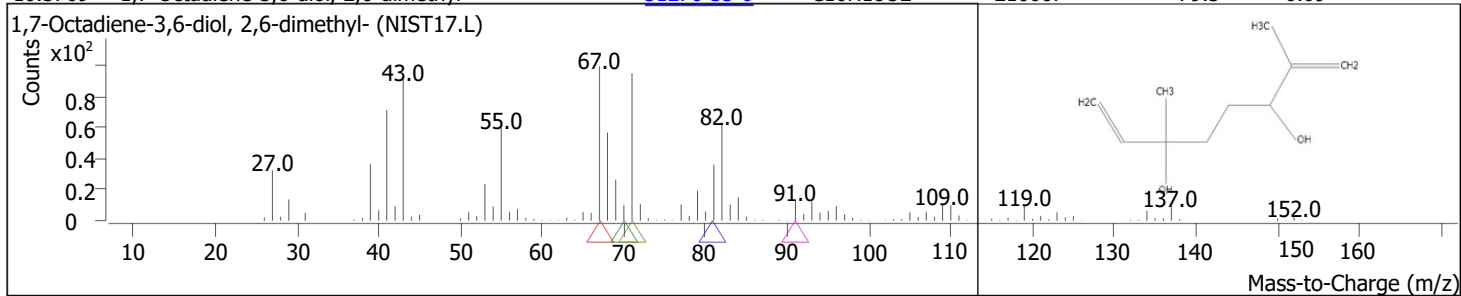
RT	Compound Name	CAS#	Formula	Area	Match Score	Sample	Sample
10.1252	2,4,6-Octatriene, 2,6-dimethyl-, (E,E)-	3016-19-1	C ₁₀ H ₁₆	201925	89.5	0.08	0.37



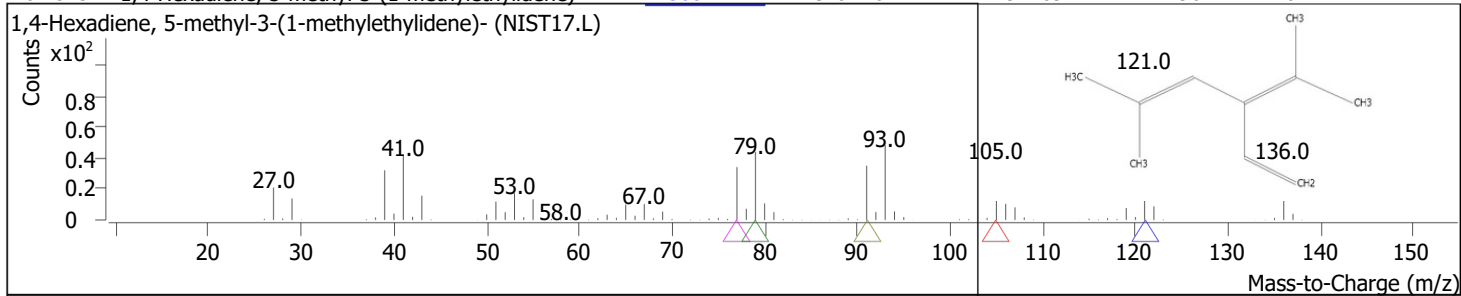
RT	Compound Name	CAS#	Formula	Area	Match Score	Sample	Sample
10.2682	Bicyclo[3.2.1]octane, 2,3-bis(methylene)-	49826-54-2	C10H14	30776	77.1	0.01	0.06



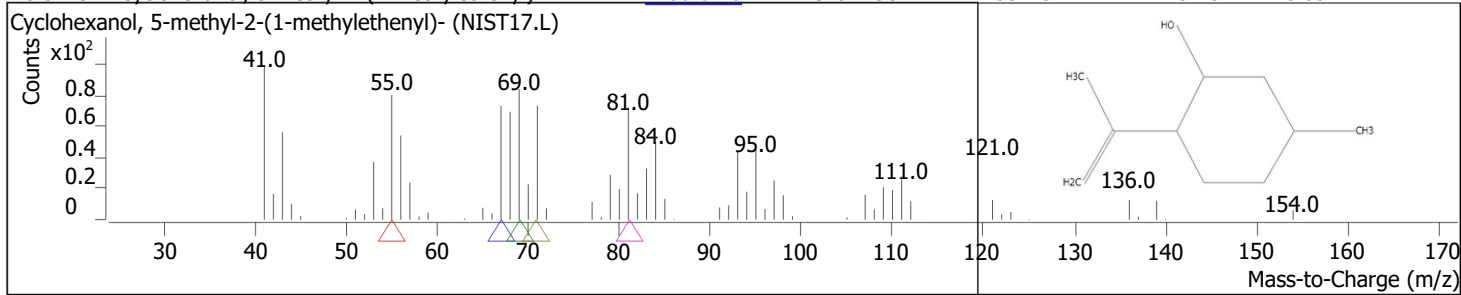
RT	Compound Name	CAS#	Formula	Area	Match Score	Sample	Sample
10.3769	1,7-Octadiene-3,6-diol, 2,6-dimethyl-	51276-33-6	C10H18O2	210067	79.3	0.09	0.39



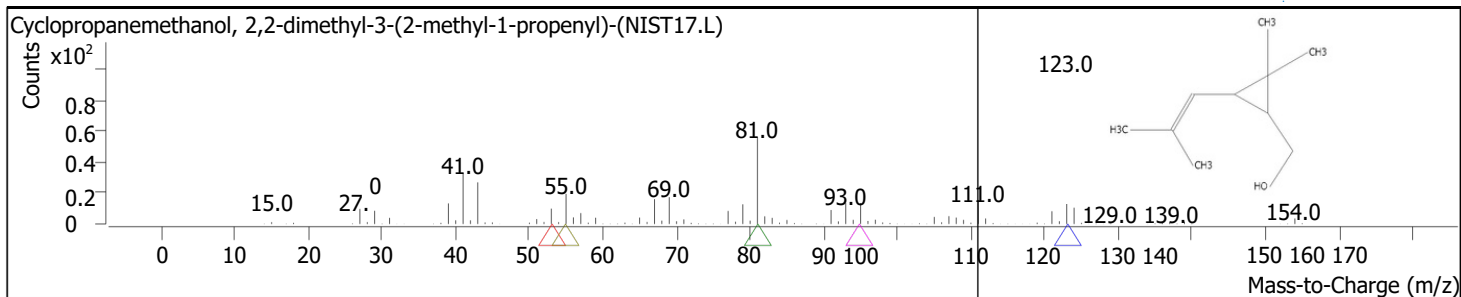
RT	Compound Name	CAS#	Formula	Area	Match Score	Sample	Sample
10.4513	1,4-Hexadiene, 5-methyl-3-(1-methylethylidene)-	113687-24-4	C10H16	294209	96.1	0.12	0.54



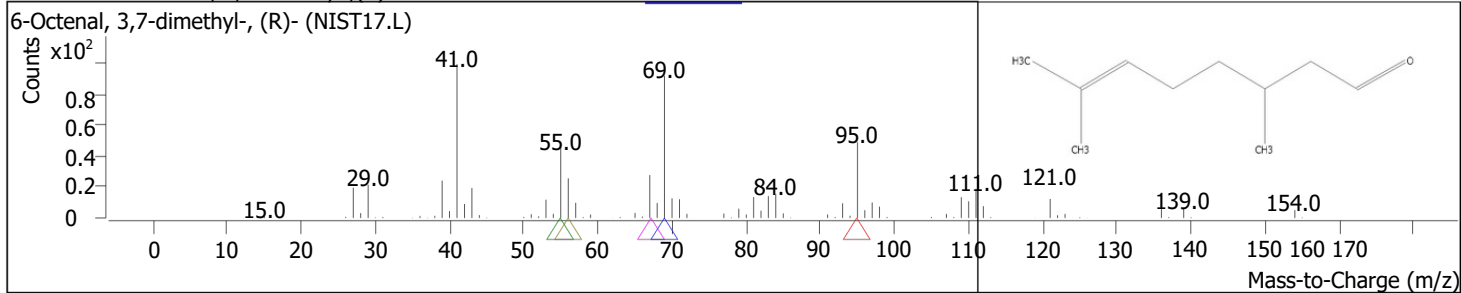
RT	Compound Name	CAS#	Formula	Area	Match Score	Sample	Sample
10.5715	Cyclohexanol, 5-methyl-2-(1-methylethenyl)-	7786-67-6	C10H18O	1582157	97.6	0.65	2.91



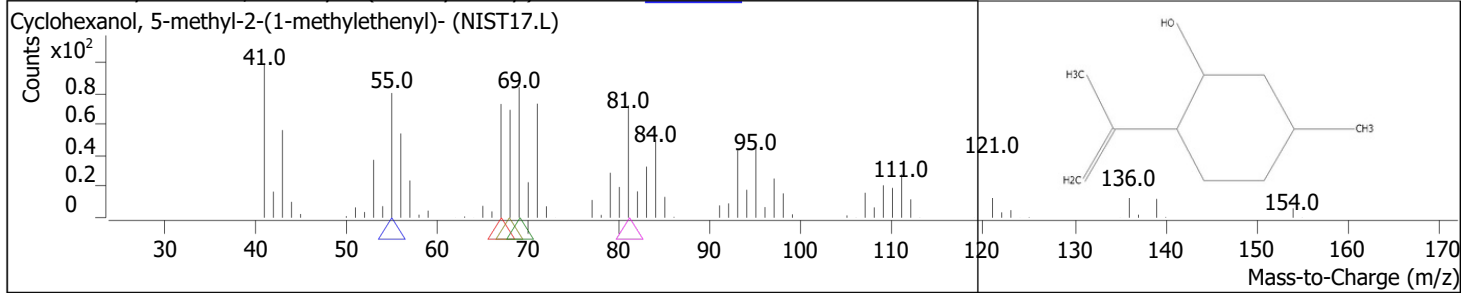
RT	Compound Name	CAS#	Formula	Area	Match Score	Sample	Sample
10.6573	Cyclopropanemethanol, 2,2-dimethyl-3-(2-methyl-1-propenyl)-	5617-92-5	C10H18O	704060	70.5	0.29	1.29



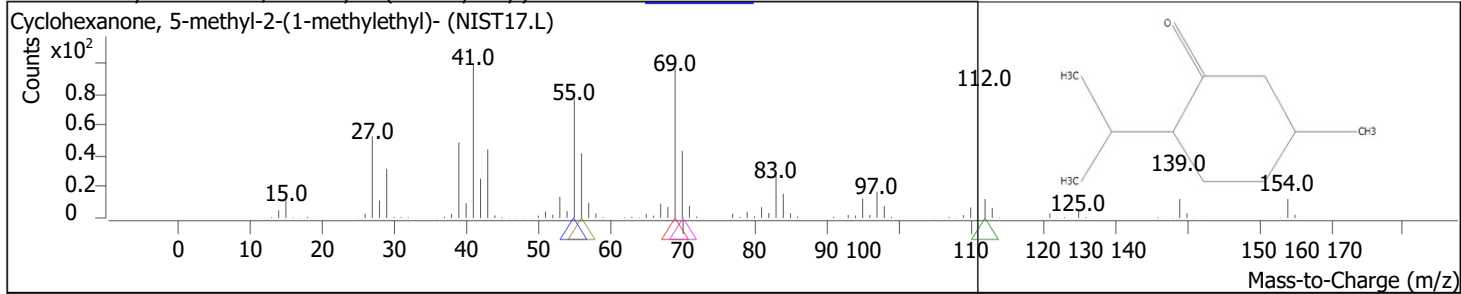
RT	Compound Name	CAS#	Formula	Area	Match Score	Sample	Sample
10.8519	6-Octenal, 3,7-dimethyl-,(R)-	2385-77-5	C10H18O	54374288	98.8	22.45	100.00



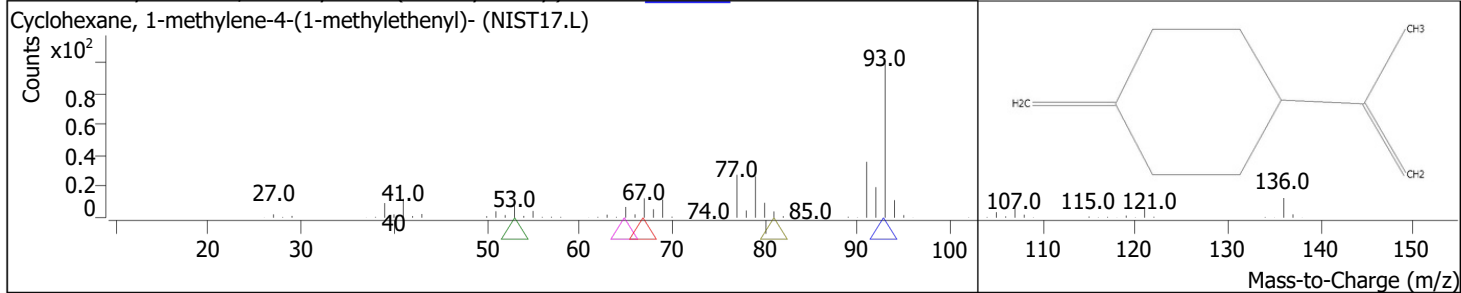
RT	Compound Name	CAS#	Formula	Area	Match Score	Sample	Sample
10.9262	Cyclohexanol, 5-methyl-2-(1-methylethenyl)-	7786-67-6	C10H18O	1097237	91.5	0.45	2.02



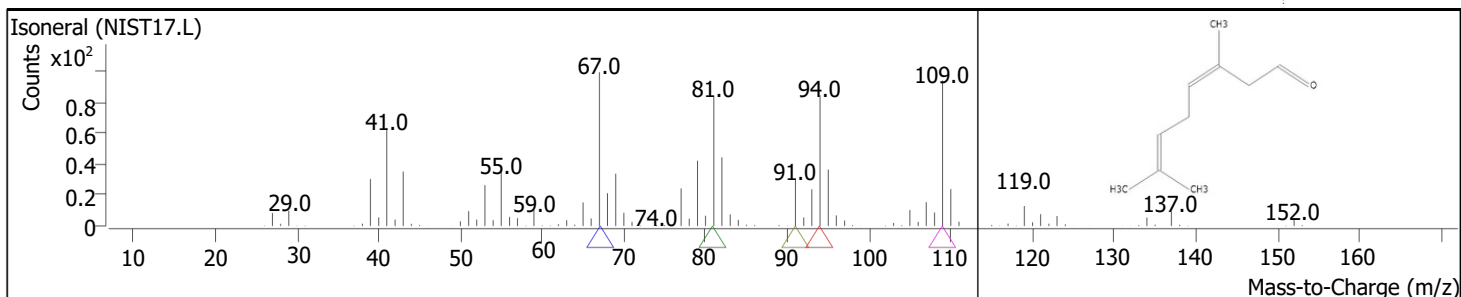
RT	Compound Name	CAS#	Formula	Area	Match Score	Sample	Sample
11.0865	Cyclohexanone, 5-methyl-2-(1-methylethyl)-	10458-14-7	C10H18O	520331	91.7	0.21	0.96



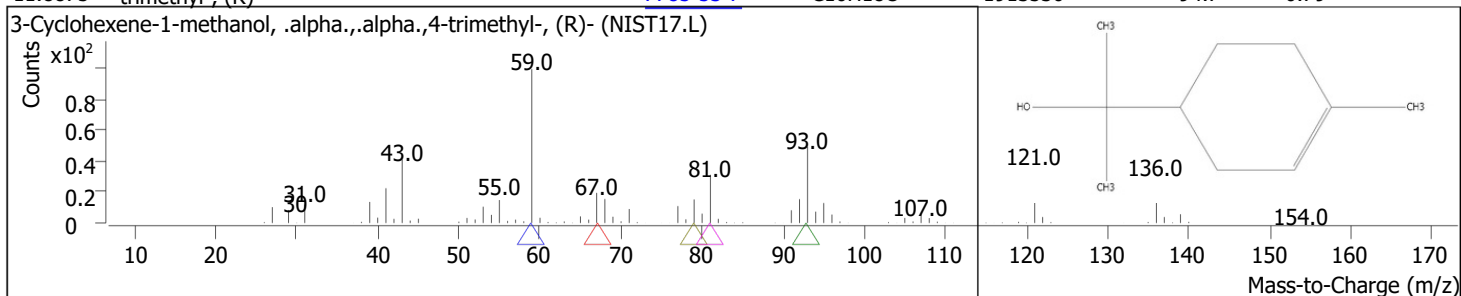
RT	Compound Name	CAS#	Formula	Area	Match Score	Sample	Sample
11.2925	Cyclohexane, 1-methylene-4-(1-methylethenyl)-	499-97-8	C10H16	48531	69.4	0.02	0.09



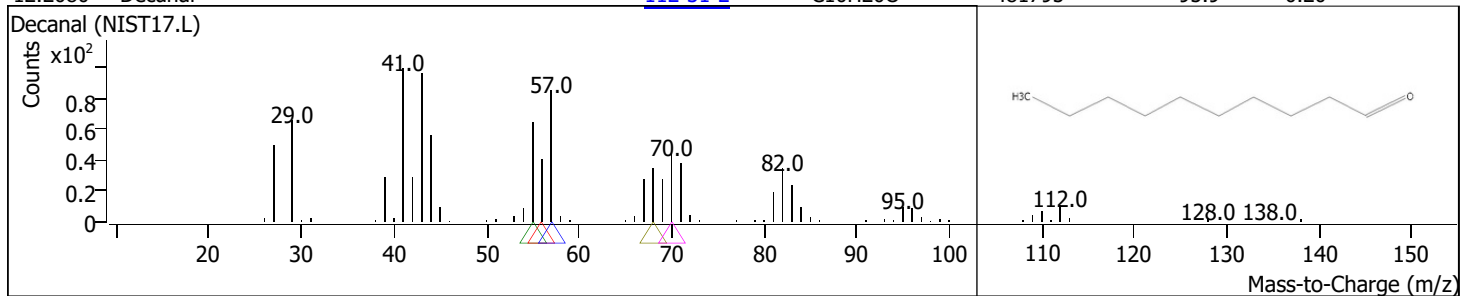
RT	Compound Name	CAS#	Formula	Area	Match Score	Sample	Sample
11.6014	Isoneral	1000414-18-0	C10H16O	156120	91.2	0.06	0.29



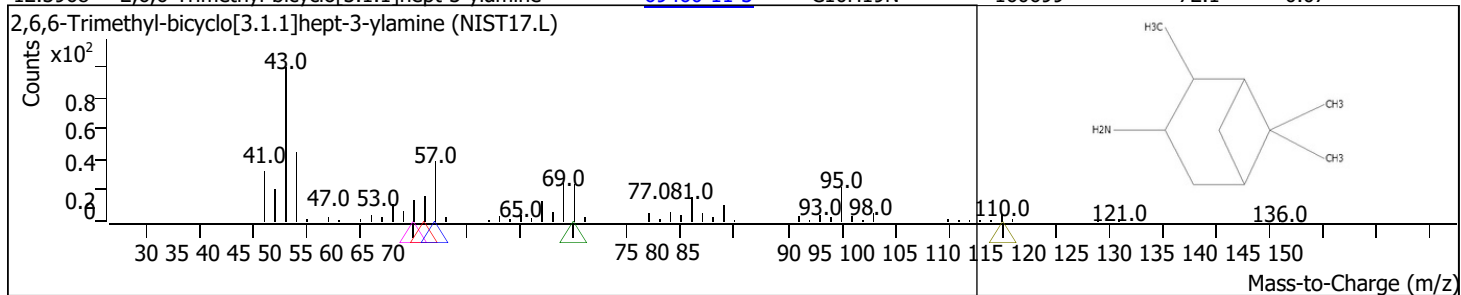
RT	Compound Name	CAS#	Formula	Area	Match Score	Sample	Sample
11.8875	3-Cyclohexene-1-methanol, .alpha.,.alpha.,4-trimethyl-, (R)-	7785-53-7	C10H18O	1913530	94.7	0.79	3.52



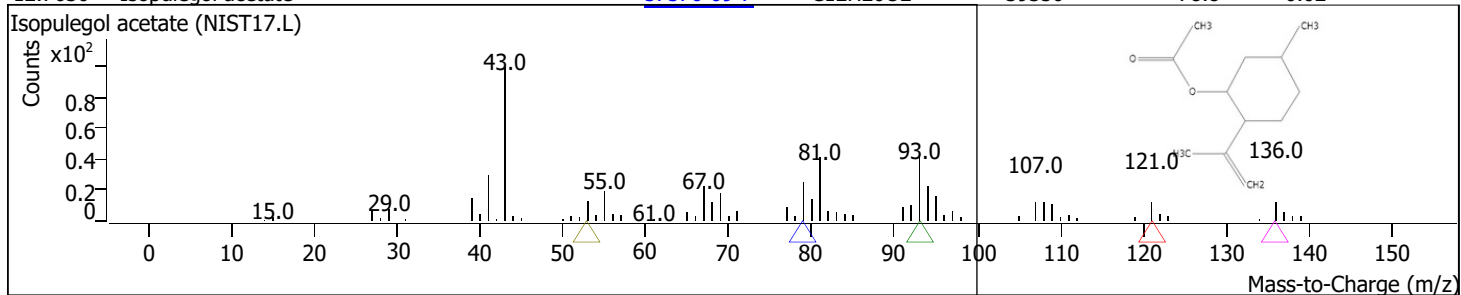
RT	Compound Name	CAS#	Formula	Area	Match Score	Sample	Sample
12.2080	Decanal	112-31-2	C10H20O	481795	95.9	0.20	0.89



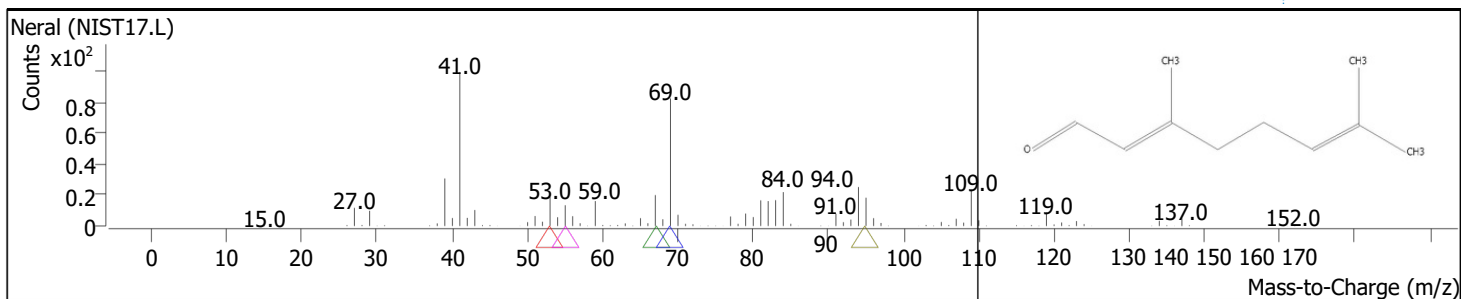
RT	Compound Name	CAS#	Formula	Area	Match Score	Sample	Sample
12.3968	2,6,6-Trimethyl-bicyclo[3.1.1]hept-3-ylamine	69460-11-3	C10H19N	160699	72.1	0.07	0.30



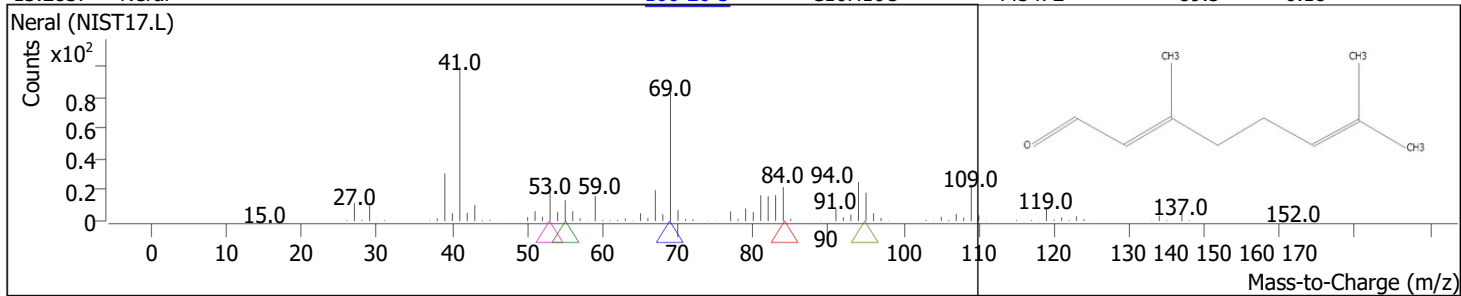
RT	Compound Name	CAS#	Formula	Area	Match Score	Sample	Sample
12.7630	Isopulegol acetate	57576-09-7	C12H20O2	39350	78.8	0.02	0.07



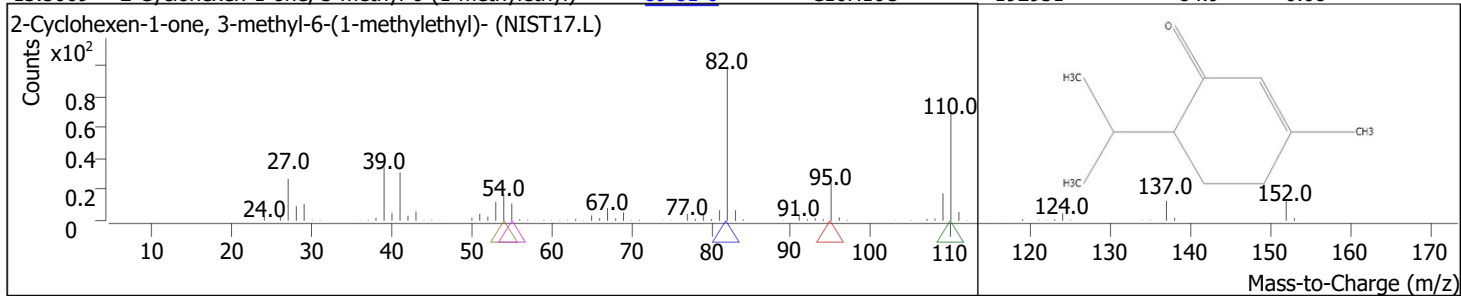
RT	Compound Name	CAS#	Formula	Area	Match Score	Sample	Sample
13.1636	Neral	106-26-3	C10H16O	649485	96.3	0.27	1.19



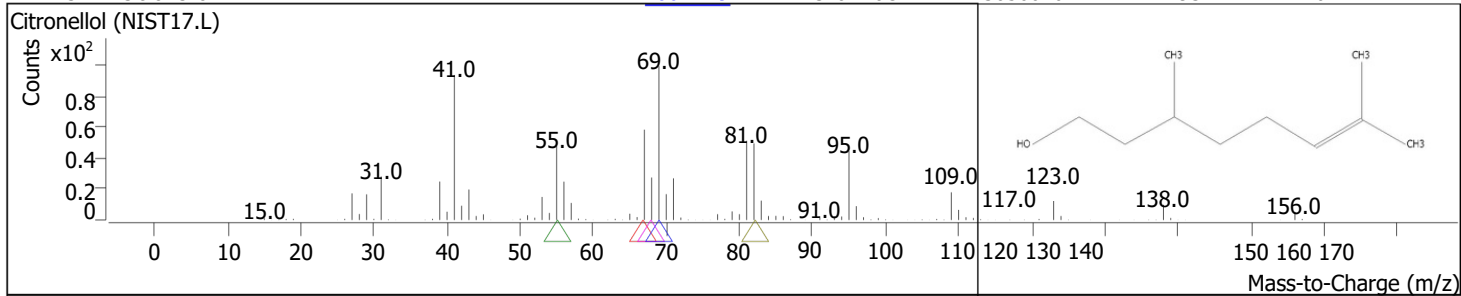
RT	Compound Name	CAS#	Formula	Area	Match Score	Sample	Sample
13.2837	Neral	106-26-3	C10H16O	445472	89.5	0.18	0.82



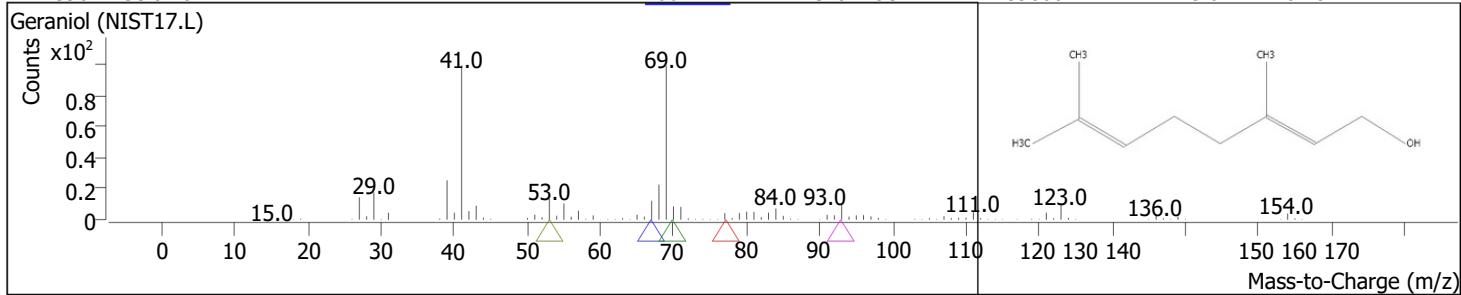
RT	Compound Name	CAS#	Formula	Area	Match Score	Sample	Sample
13.5069	2-Cyclohexen-1-one, 3-methyl-6-(1-methylethyl)-	89-81-6	C10H16O	192951	84.9	0.08	0.35



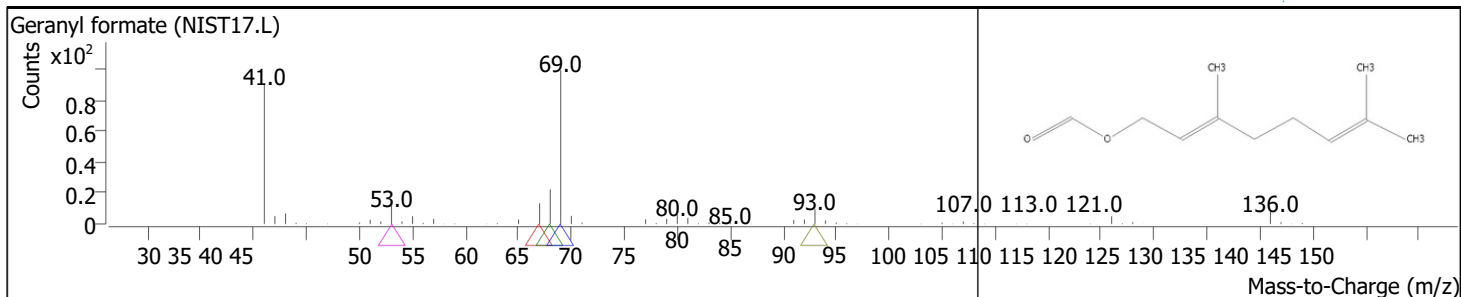
RT	Compound Name	CAS#	Formula	Area	Match Score	Sample	Sample
14.1134	Citronellol	106-22-9	C10H20O	3056646	93.7	1.26	5.62



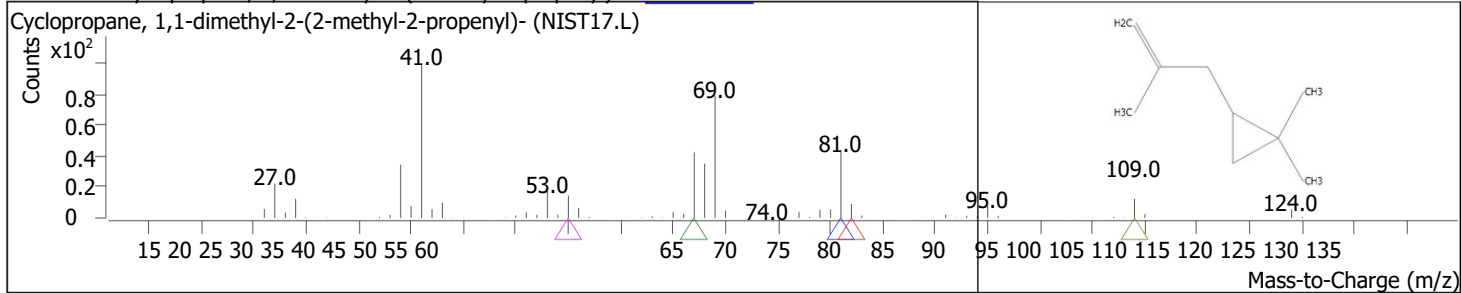
RT	Compound Name	CAS#	Formula	Area	Match Score	Sample	Sample
14.4396	Geraniol	106-24-1	C10H18O	439800	73.0	0.18	0.81



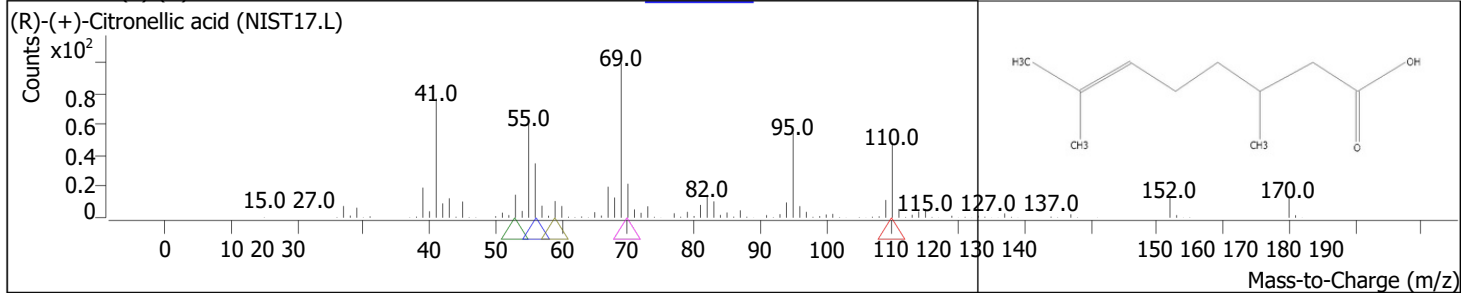
RT	Compound Name	CAS#	Formula	Area	Match Score	Sample	Sample
14.8287	Geranyl formate	105-86-2	C11H18O2	1747302	95.3	0.72	3.21



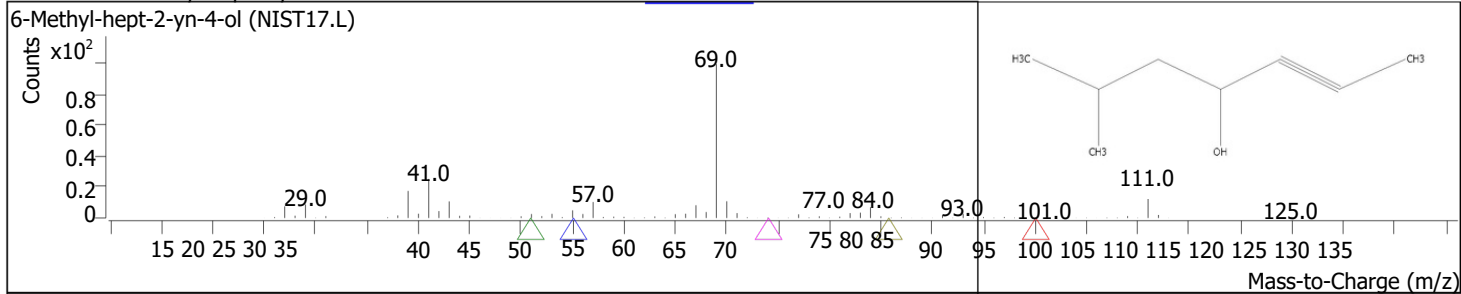
RT	Compound Name	CAS#	Formula	Area	Match Score	Sample	Sample
15.2464	Cyclopropane, 1,1-dimethyl-2-(2-methyl-2-propenyl)-	69147-03-1	C9H16	286993	76.9	0.12	0.53



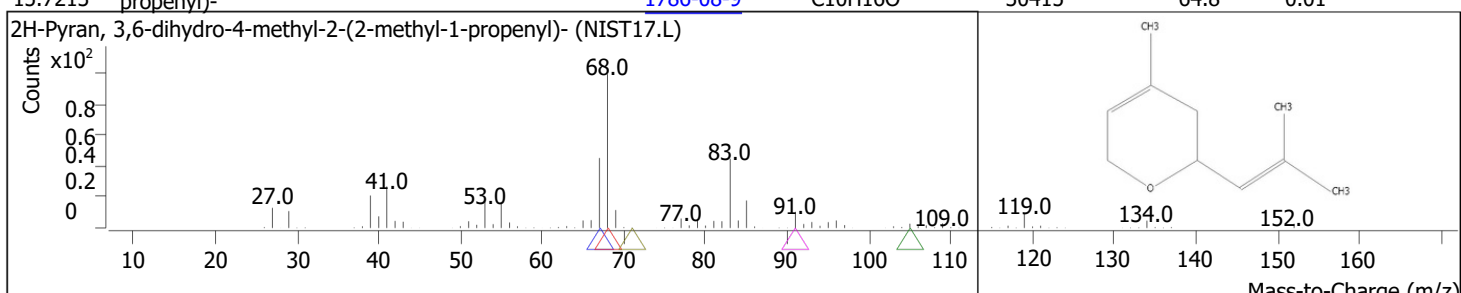
RT	Compound Name	CAS#	Formula	Area	Match Score	Sample	Sample
15.4009	(R)-(+)-Citronellic acid	18951-85-4	C10H18O2	973753	90.7	0.40	1.79



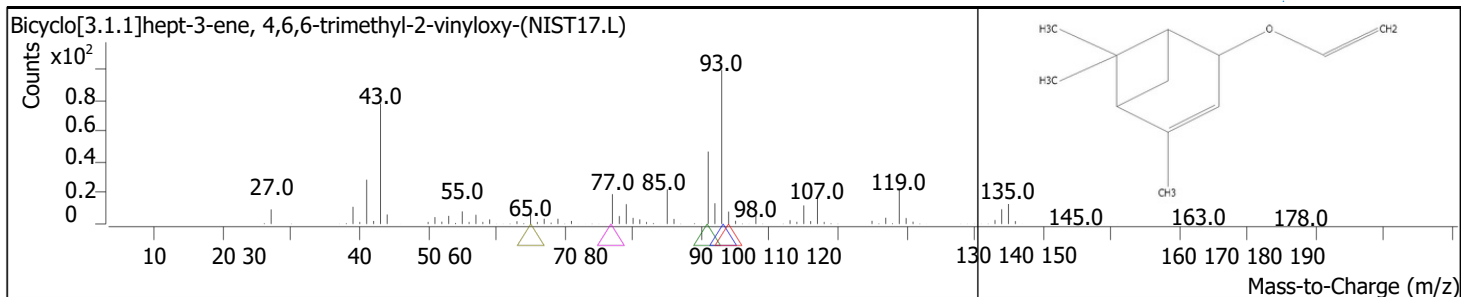
RT	Compound Name	CAS#	Formula	Area	Match Score	Sample	Sample
15.5668	6-Methyl-hept-2-yn-4-ol	60018-69-1	C8H14O	60796	66.7	0.03	0.11



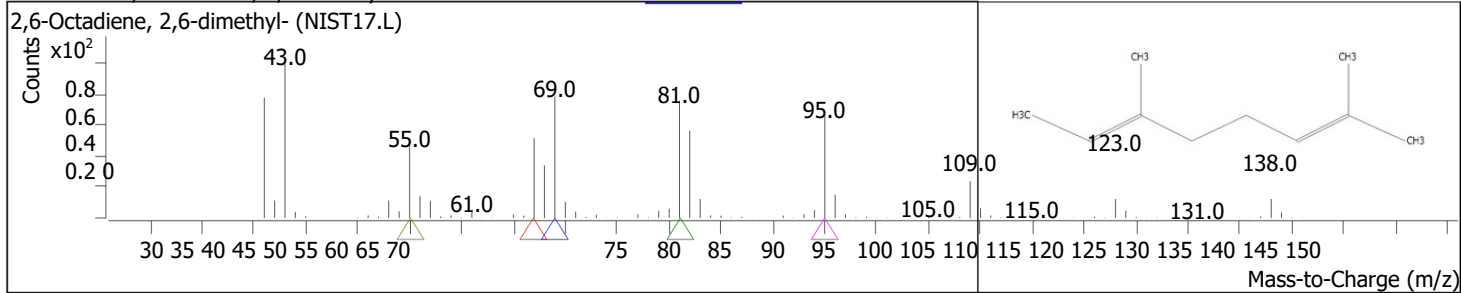
RT	Compound Name	CAS#	Formula	Area	Match Score	Sample	Sample
15.7213	2H-Pyran, 3,6-dihydro-4-methyl-2-(2-methyl-1-propenyl)-	1786-08-9	C10H16O	30415	64.8	0.01	0.06



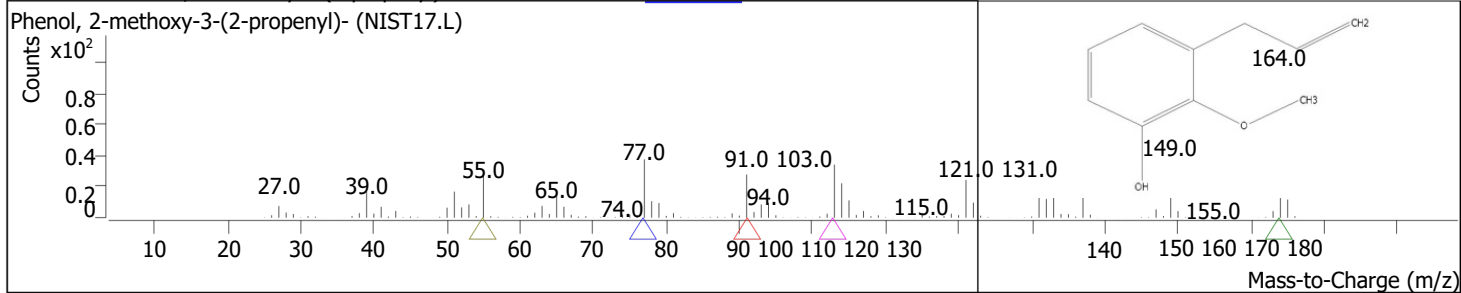
RT	Compound Name	CAS#	Formula	Area	Match Score	Sample	Sample
15.9731	Bicyclo[3.1.1]hept-3-ene, 4,6,6-trimethyl-2-vinyloxy-	1000163-23-1	C12H18O	70377	72.2	0.03	0.13



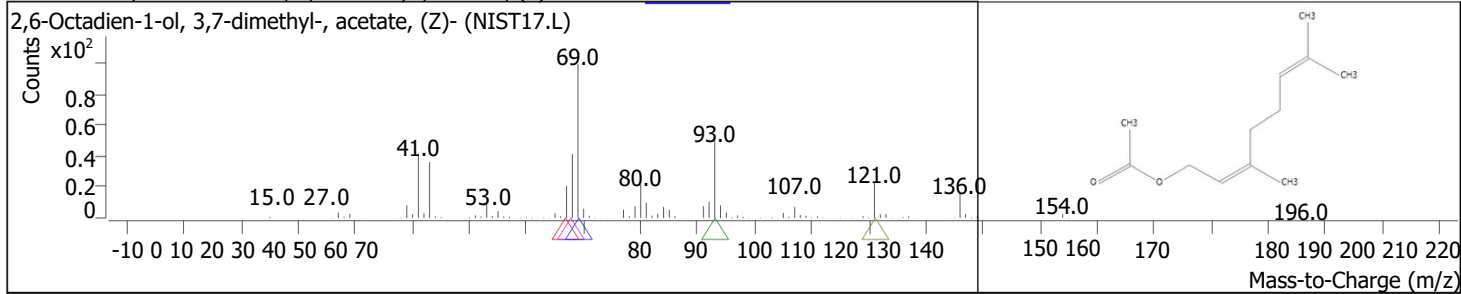
RT	Compound Name	CAS#	Formula	Area	Match Score	Sample	Sample
16.1734	2,6-Octadiene, 2,6-dimethyl-	2792-39-4	C10H18	6018520	97.7	2.48	11.07



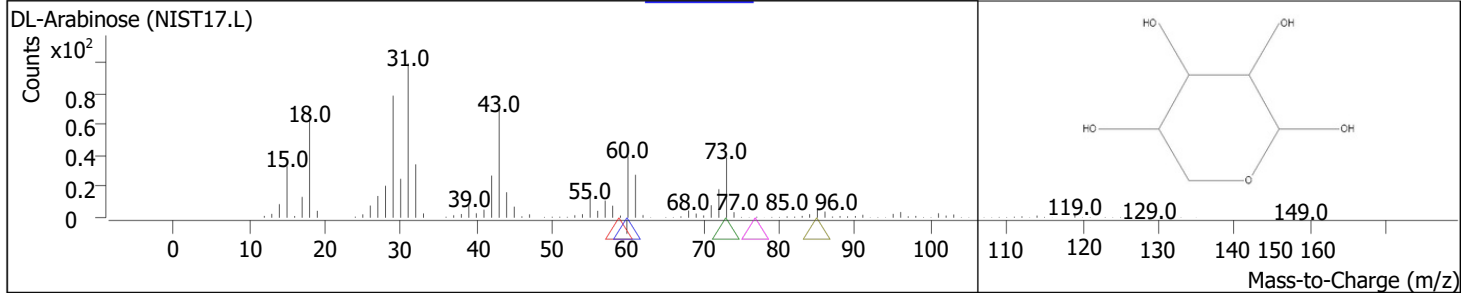
RT	Compound Name	CAS#	Formula	Area	Match Score	Sample	Sample
16.2706	Phenol, 2-methoxy-3-(2-propenyl)-	1941-12-4	C10H12O2	787825	90.5	0.33	1.45



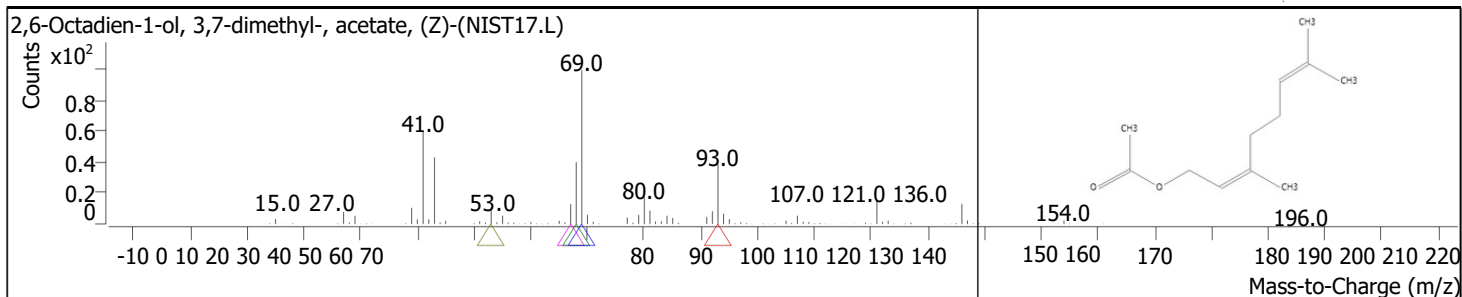
RT	Compound Name	CAS#	Formula	Area	Match Score	Sample	Sample
16.4480	2,6-Octadien-1-ol, 3,7-dimethyl-, acetate, (Z)-	141-12-8	C12H20O2	114190	84.7	0.05	0.21



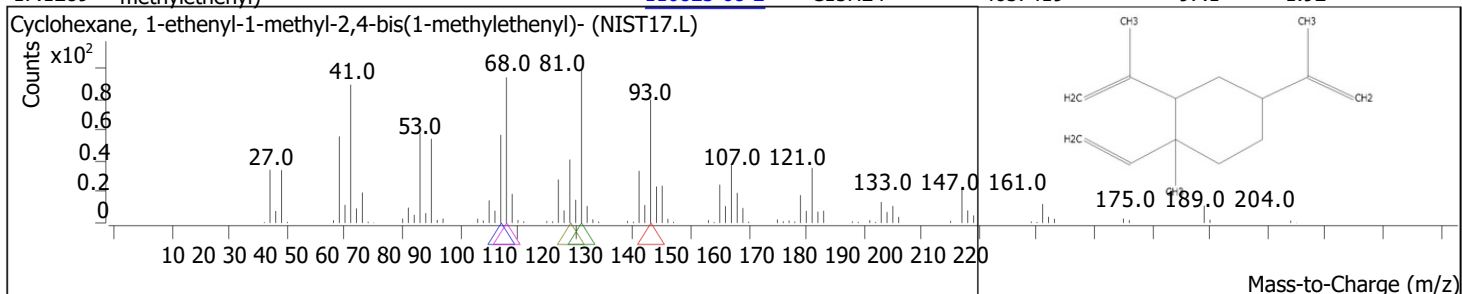
RT	Compound Name	CAS#	Formula	Area	Match Score	Sample	Sample
16.5739	DL-Arabinose	20235-19-2	C5H10O5	40052	60.7	0.02	0.07



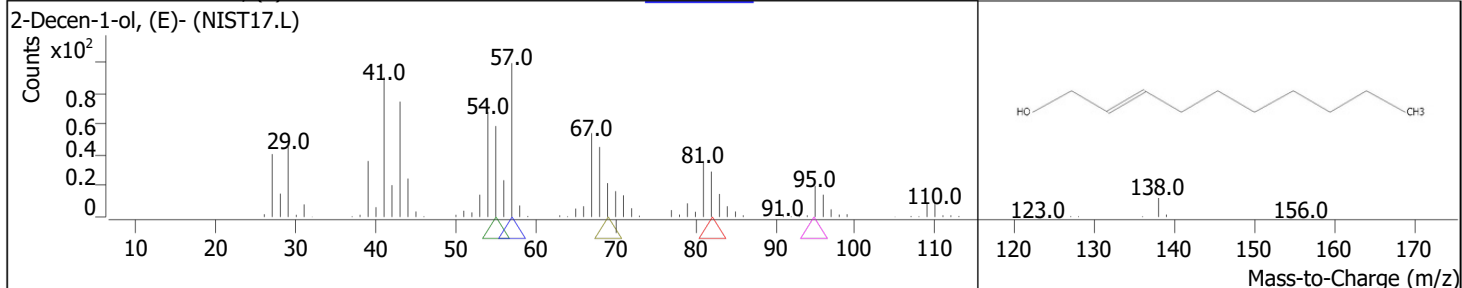
RT	Compound Name	CAS#	Formula	Area	Match Score	Sample	Sample
16.9630	2,6-Octadien-1-ol, 3,7-dimethyl-, acetate, (Z)-	141-12-8	C12H20O2	9758569	96.2	4.03	17.95



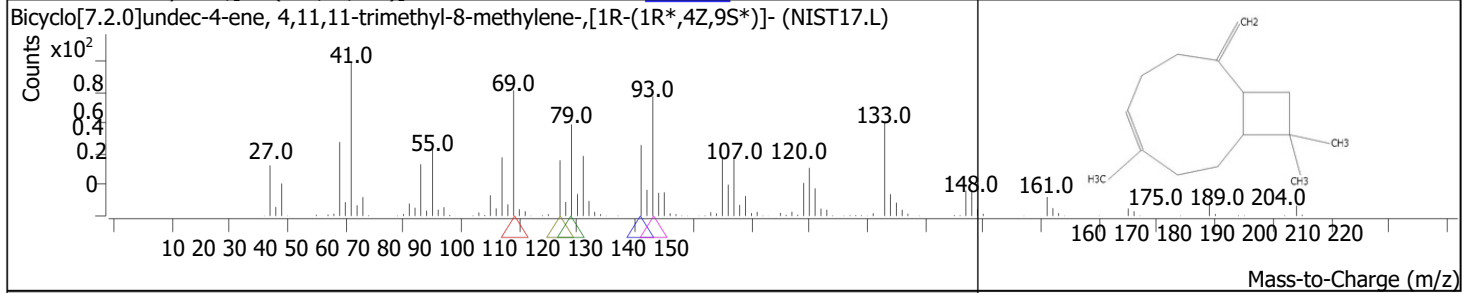
RT	Compound Name	CAS#	Formula	Area	Match Score	Sample	Sample
17.1289	Cyclohexane, 1-ethenyl-1-methyl-2,4-bis(1-methylethenyl)-	110823-68-2	C15H24	4657419	97.1	1.92	8.57



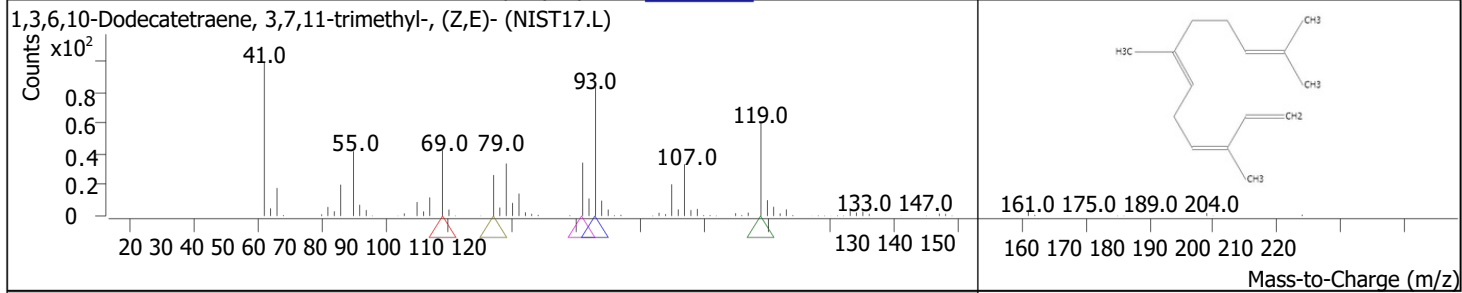
RT	Compound Name	CAS#	Formula	Area	Match Score	Sample	Sample
17.5753	2-Decen-1-ol, (E)-	18409-18-2	C10H20O	112303	82.8	0.05	0.21



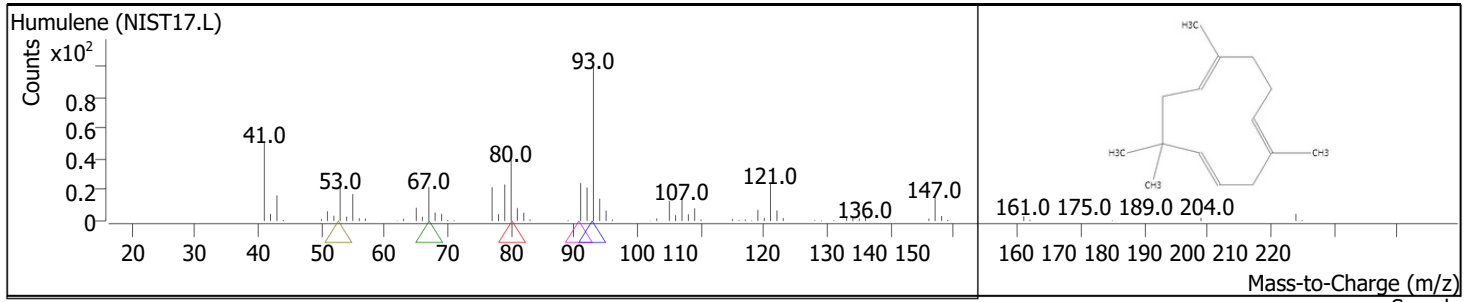
RT	Compound Name	CAS#	Formula	Area	Match Score	Sample	Sample
17.7927	Bicyclo[7.2.0]undec-4-ene, 4,11,11-trimethyl-8-methylene-, [1R-(1R*,4Z,9S*)]-	118-65-0	C15H24	365549	94.0	0.15	0.67



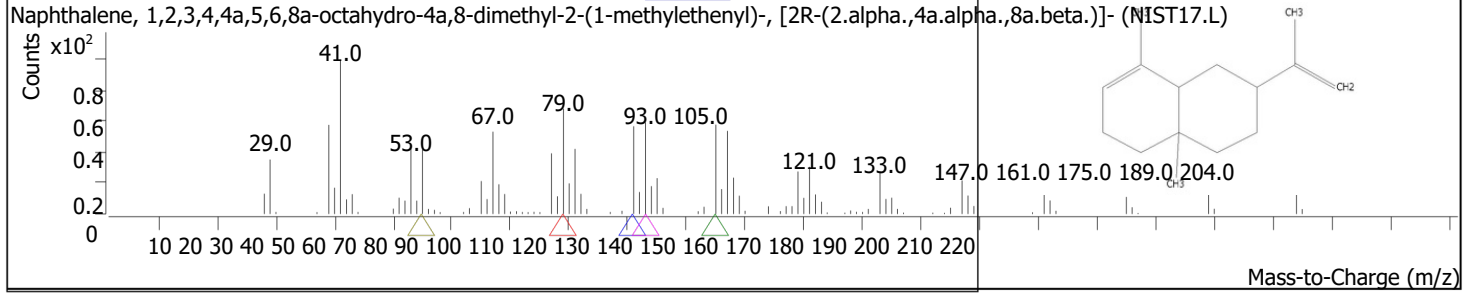
RT	Compound Name	CAS#	Formula	Area	Match Score	Sample	Sample
18.2161	1,3,6,10-Dodecatetraene, 3,7,11-trimethyl-, (Z,E)-	26560-14-5	C15H24	2102808	97.3	0.87	3.87



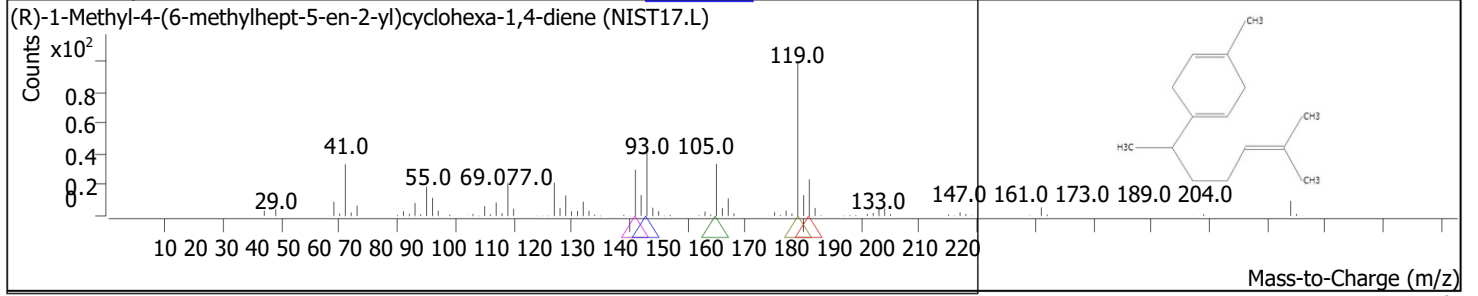
RT	Compound Name	CAS#	Formula	Area	Match Score	Sample	Sample
18.6396	Humulene	6753-98-6	C15H24	151398	87.0	0.06	0.28



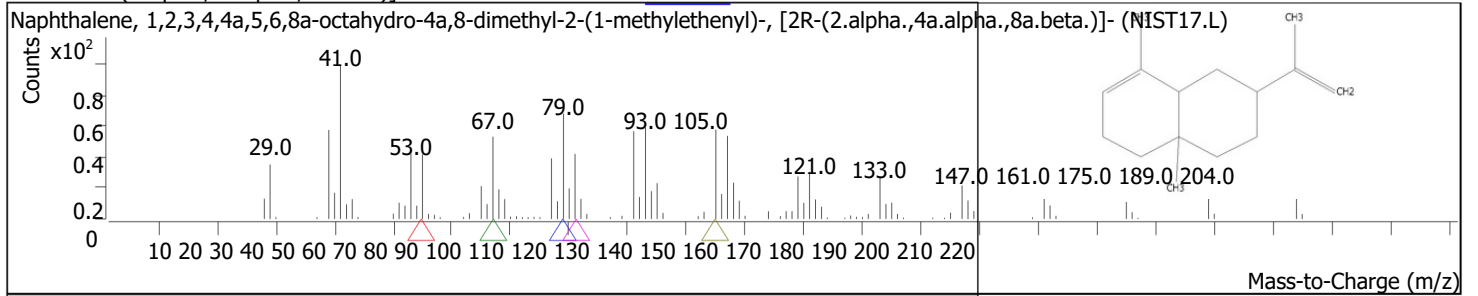
RT	Compound Name	CAS#	Formula	Area	Match Score	Sample	Sample
19.1889	Naphthalene, 1,2,3,4,4a,5,6,8a-octahydro-4a,8-dimethyl-2-(1-methylethenyl)-, [2R-(2.alpha.,4a.alpha.,8a.beta.)]-	473-13-2	C15H24	449227	91.3	0.19	0.83



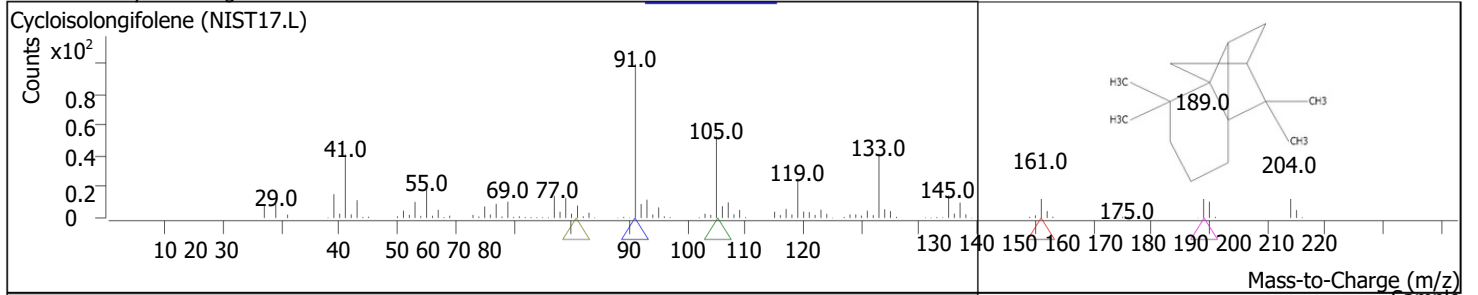
RT	Compound Name	CAS#	Formula	Area	Match Score	Sample	Sample
19.2919	(R)-1-Methyl-4-(6-methylhept-5-en-2-yl)cyclohexa-1,4-diene	28976-67-2	C15H24	74933	82.5	0.03	0.14



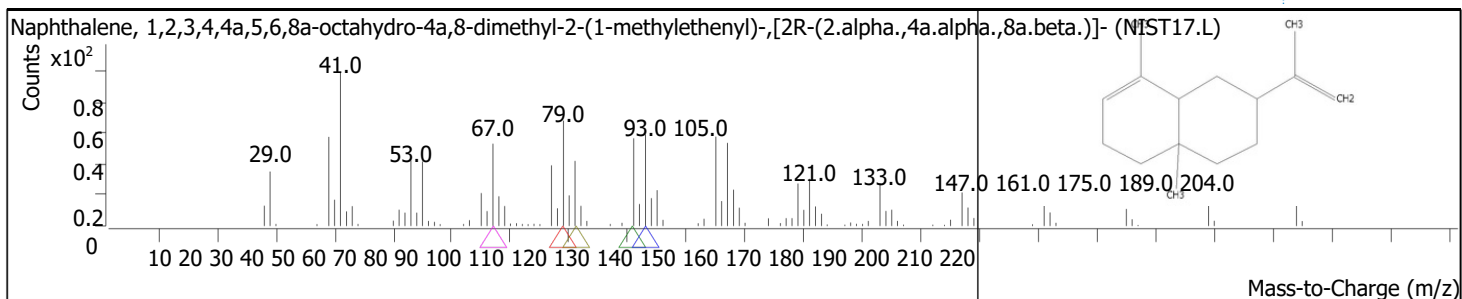
RT	Compound Name	CAS#	Formula	Area	Match Score	Sample	Sample
19.4349	Naphthalene, 1,2,3,4,4a,5,6,8a-octahydro-4a,8-dimethyl-2-(1-methylethenyl)-, [2R-(2.alpha.,4a.alpha.,8a.beta.)]-	473-13-2	C15H24	490376	94.1	0.20	0.90



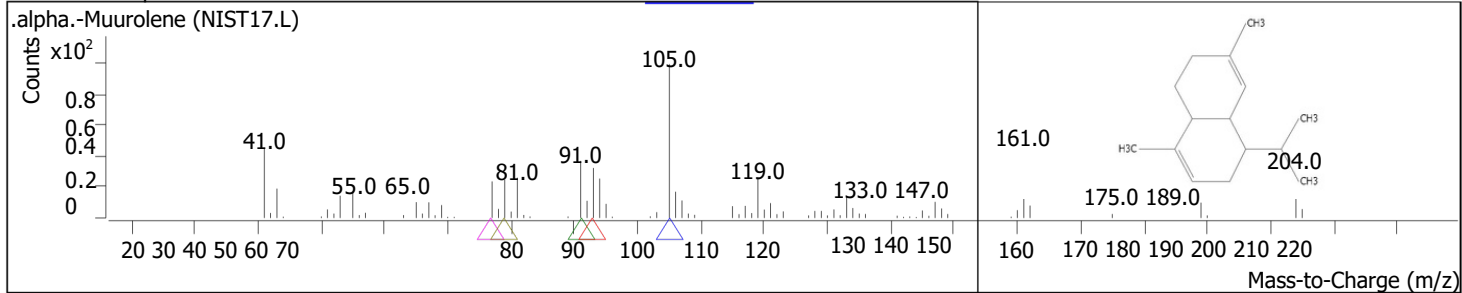
RT	Compound Name	CAS#	Formula	Area	Match Score	Sample	Sample
19.5780	Cycloisolongifolene	1000151-99-7	C15H24	64535	83.9	0.03	0.12



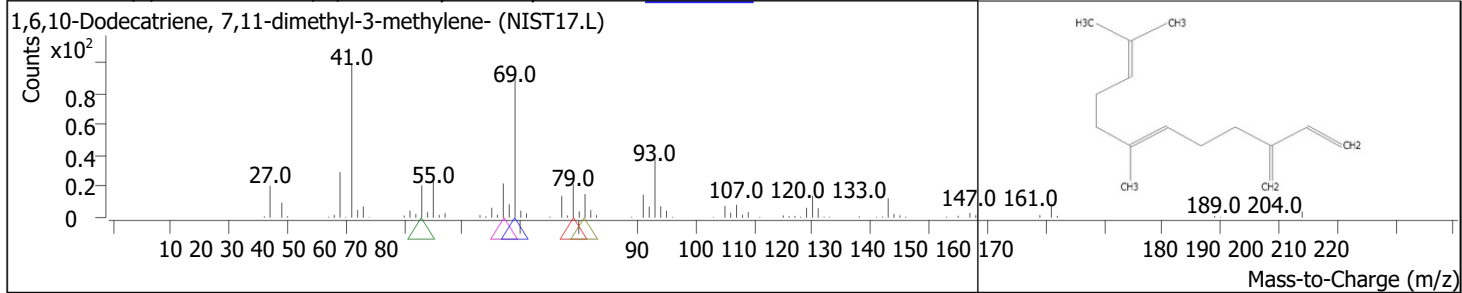
RT	Compound Name	CAS#	Formula	Area	Match Score	Sample	Sample
19.6581	Naphthalene, 1,2,3,4,4a,5,6,8a-octahydro-4a,8-dimethyl-2-(1-methylethenyl)-, [2R-(2.alpha.,4a.alpha.,8a.beta.)]-	473-13-2	C15H24	459430	94.5	0.19	0.84



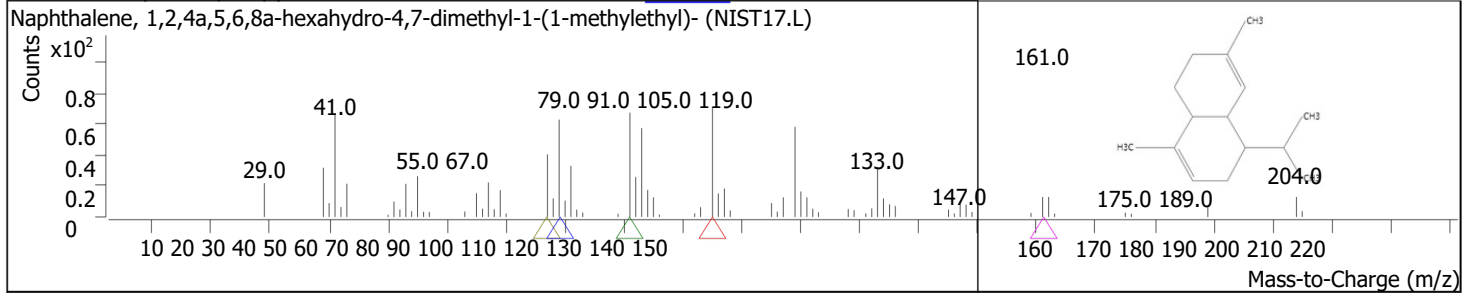
RT	Compound Name	CAS#	Formula	Area	Match Score	Sample	Sample
19.7897	.alpha.-Muurolene	31983-22-9	C15H24	402165	92.5	0.17	0.74



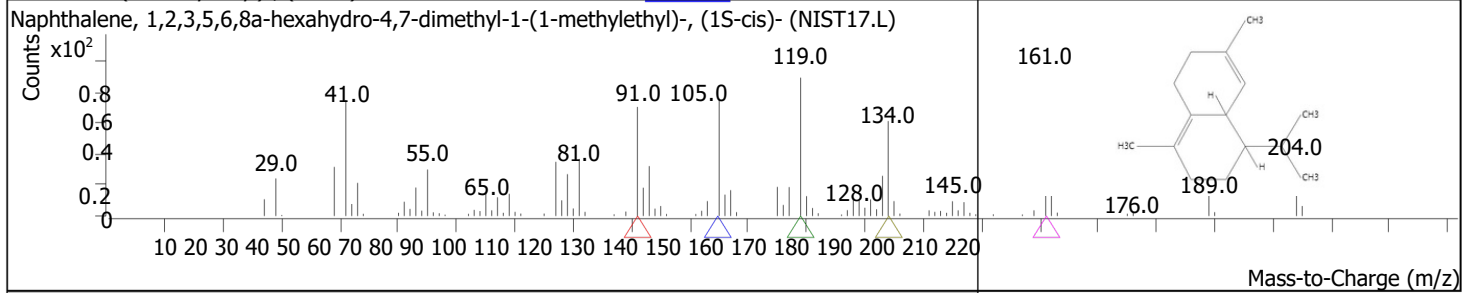
RT	Compound Name	CAS#	Formula	Area	Match Score	Sample	Sample
20.0014	1,6,10-Dodecatriene, 7,11-dimethyl-3-methylene-	77129-48-7	C15H24	43862	82.2	0.02	0.08



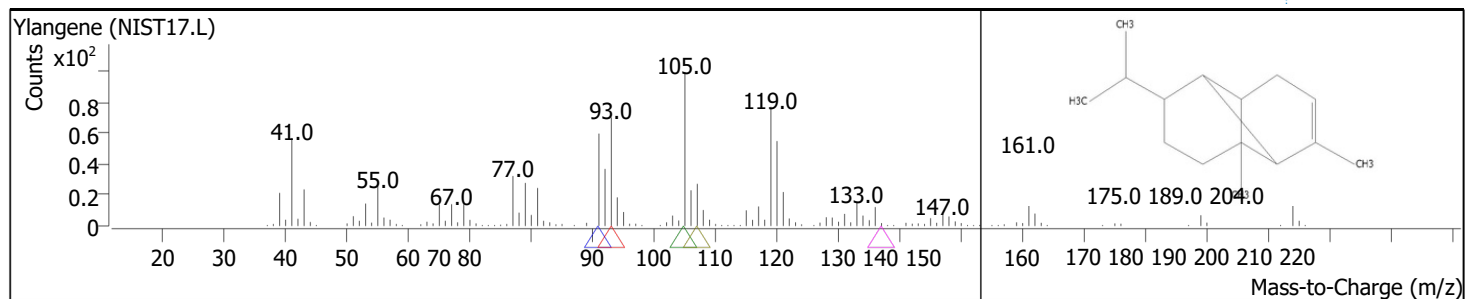
RT	Compound Name	CAS#	Formula	Area	Match Score	Sample	Sample
20.1158	Naphthalene, 1,2,4a,5,6,8a-hexahydro-4,7-dimethyl-1-(1-methylethyl)-	483-75-0	C15H24	553716	94.7	0.23	1.02



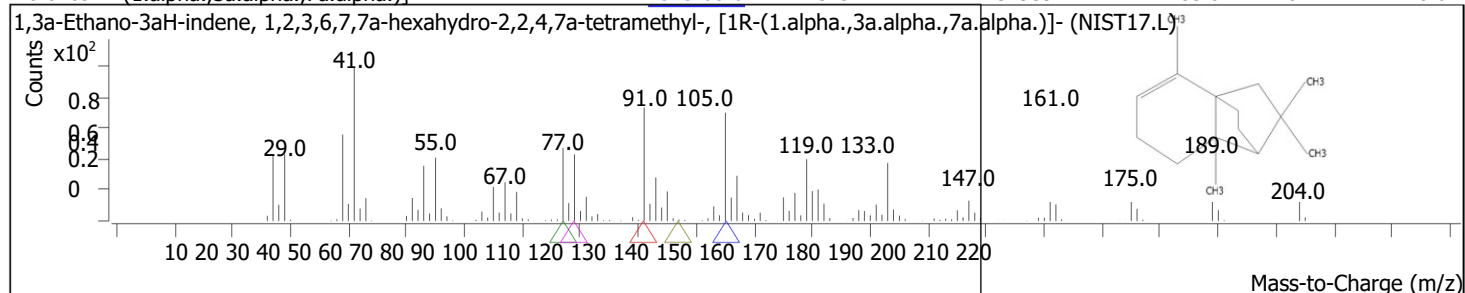
RT	Compound Name	CAS#	Formula	Area	Match Score	Sample	Sample
20.3447	Naphthalene, 1,2,3,5,6,8a-hexahydro-4,7-dimethyl-1-(1-methylethyl)-, (1S-cis)-	483-76-1	C15H24	1306207	95.3	0.54	2.40



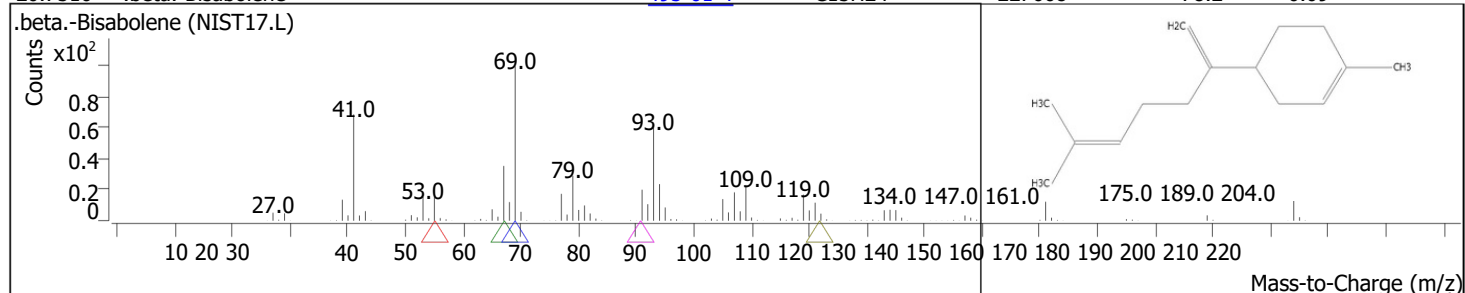
RT	Compound Name	CAS#	Formula	Area	Match Score	Sample	Sample
20.5507	Ylangene	14912-44-8	C15H24	87814	73.8	0.04	0.16



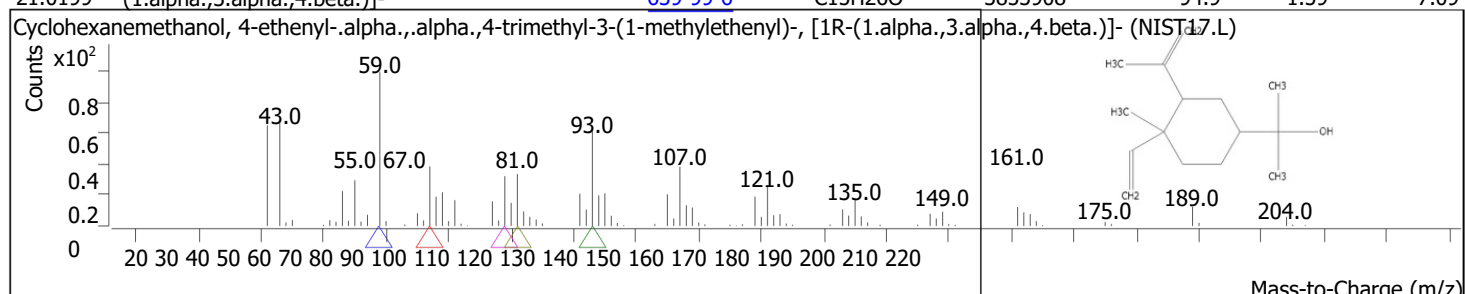
RT	Compound Name	CAS#	Formula	Area	Match Score	Sample	Sample
20.6709	1,3a-Ethano-3aH-indene, 1,2,3,6,7,7a-hexahydro-2,2,4,7a-tetramethyl-, [1R-(1.alpha.,3a.alpha.,7a.alpha.)]-	4545-68-0	C15H24	329397	85.0	0.14	0.61



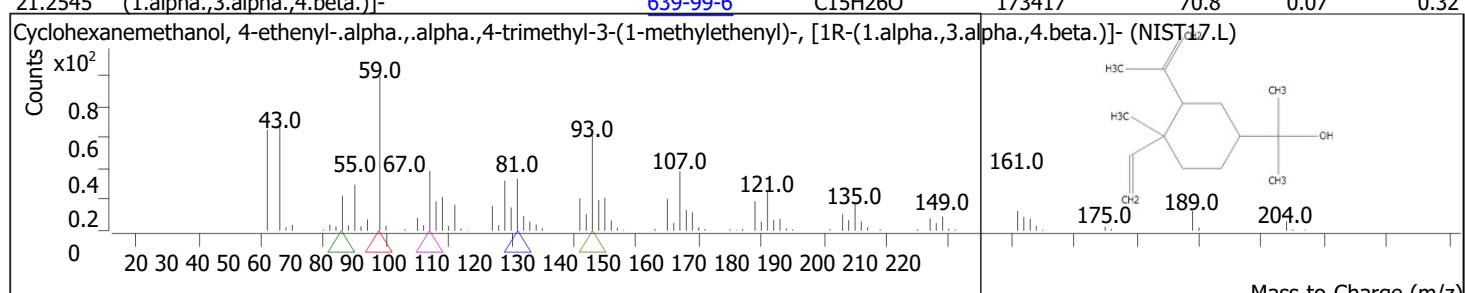
RT	Compound Name	CAS#	Formula	Area	Match Score	Sample	Sample
20.7510	.beta.-Bisabolene	495-61-4	C15H24	227668	78.2	0.09	0.42



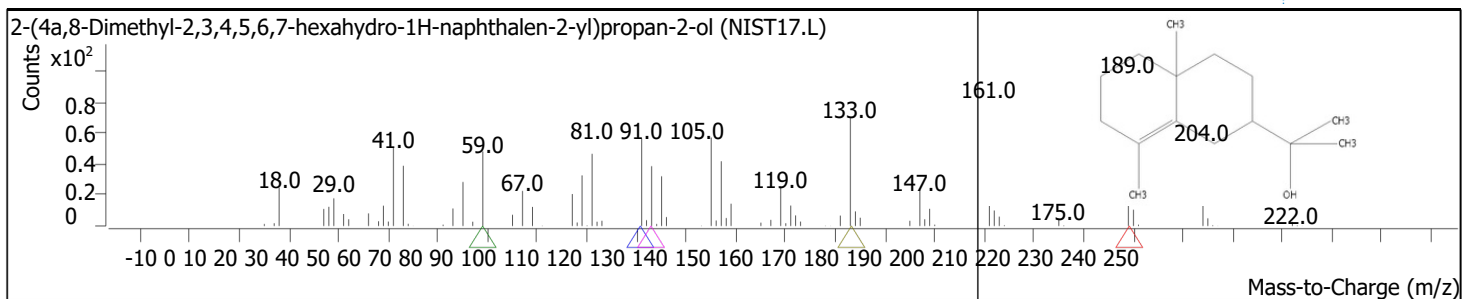
RT	Compound Name	CAS#	Formula	Area	Match Score	Sample	Sample
21.0199	Cyclohexanemethanol, 4-ethenyl-.alpha.,.alpha.,4-trimethyl-3-(1-methylethenyl)-, [1R-(1.alpha.,3.alpha.,4.beta.)]-	639-99-6	C15H26O	3853908	94.9	1.59	7.09



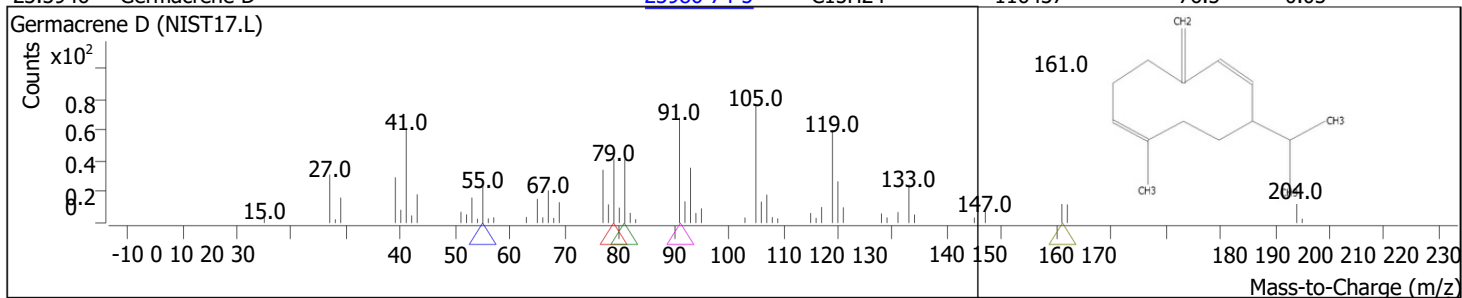
RT	Compound Name	CAS#	Formula	Area	Match Score	Sample	Sample
21.2545	Cyclohexanemethanol, 4-ethenyl-.alpha.,.alpha.,4-trimethyl-3-(1-methylethenyl)-, [1R-(1.alpha.,3.alpha.,4.beta.)]-	639-99-6	C15H26O	173417	70.8	0.07	0.32



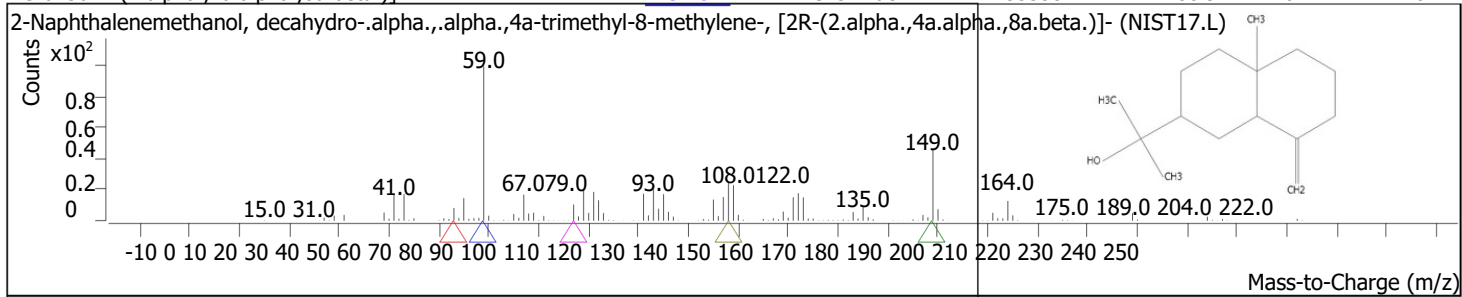
RT	Compound Name	CAS#	Formula	Area	Match Score	Sample	Sample
23.1714	2-(4a,8-Dimethyl-2,3,4,5,6,7-hexahydro-1H-naphthalen-2-yl)propan-2-ol	1000411-50-0	C15H26O	285469	86.7	0.12	0.53



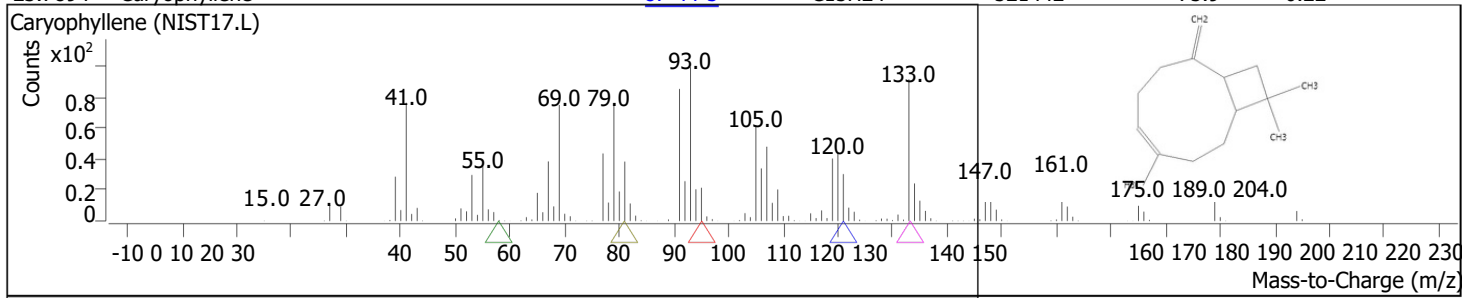
RT	Compound Name	CAS#	Formula	Area	Match Score	Sample	Sample
23.3946	Germacrene D	23986-74-5	C15H24	116437	76.5	0.05	0.21



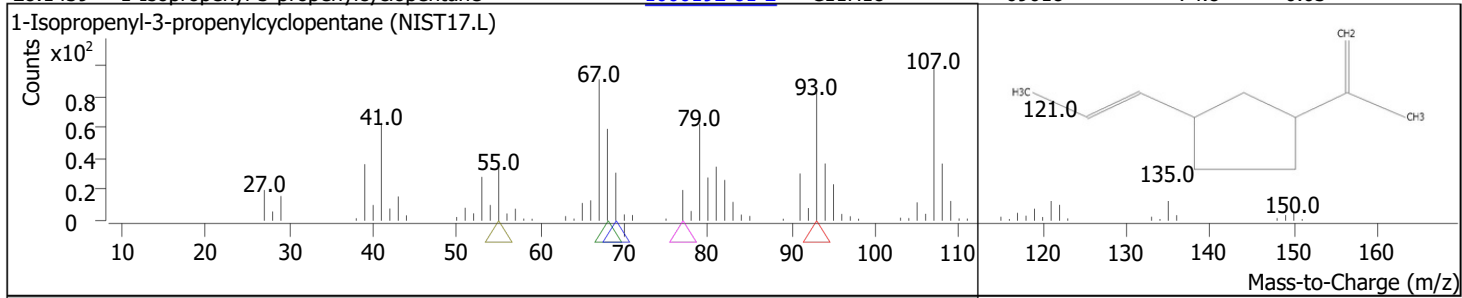
RT	Compound Name	CAS#	Formula	Area	Match Score	Sample	Sample
23.6750	2-Naphthalenemethanol, decahydro-.alpha.,.alpha.,4a-trimethyl-8-methylene-, [2R-(2.alpha.,4a.alpha.,8a.beta.)]-	473-15-4	C15H26O	255558	88.9	0.11	0.47



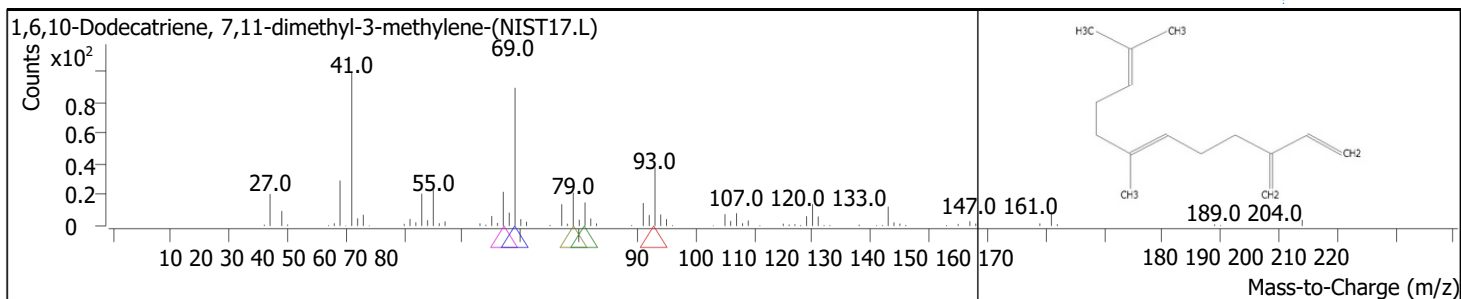
RT	Compound Name	CAS#	Formula	Area	Match Score	Sample	Sample
23.7894	Caryophyllene	87-44-5	C15H24	521442	75.9	0.22	0.96



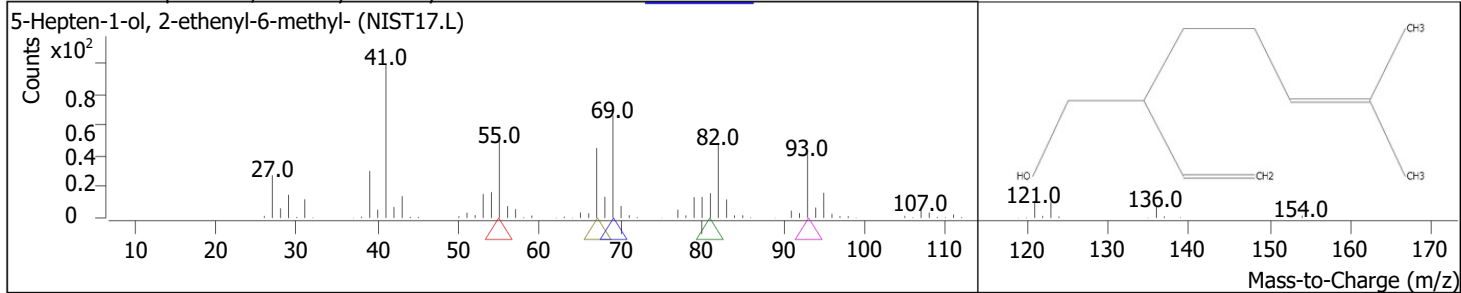
RT	Compound Name	CAS#	Formula	Area	Match Score	Sample	Sample
28.1439	1-Isopropenyl-3-propenylcyclopentane	1000192-81-2	C11H18	69018	74.8	0.03	0.13



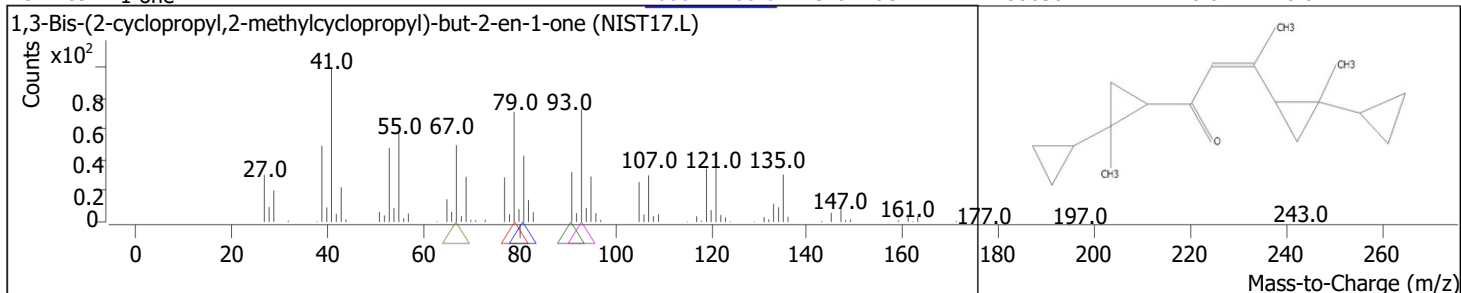
RT	Compound Name	CAS#	Formula	Area	Match Score	Sample	Sample
28.7447	1,6,10-Dodecatriene, 7,11-dimethyl-3-methylene-	77129-48-7	C15H24	292858	86.4	0.12	0.54



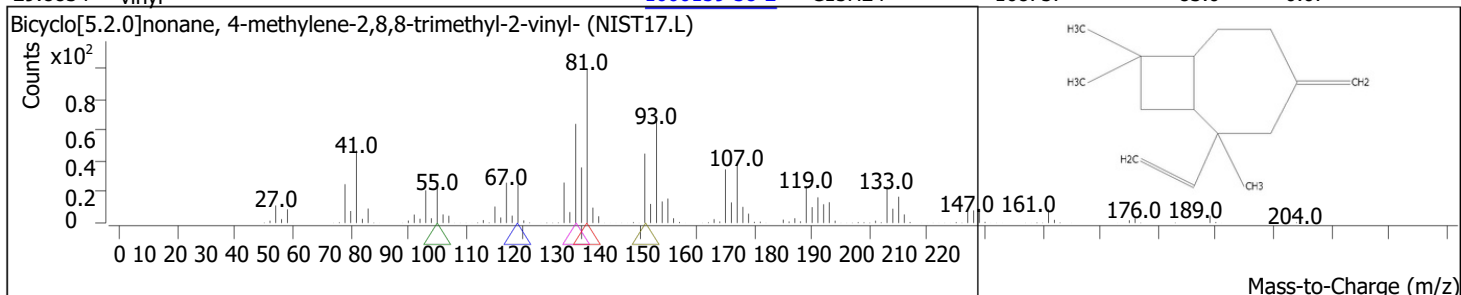
RT	Compound Name	CAS#	Formula	Area	Match Score	Sample	Sample
29.4313	5-Hepten-1-ol, 2-ethenyl-6-methyl-	18479-48-6	C10H18O	3899788	88.0	1.61	7.17



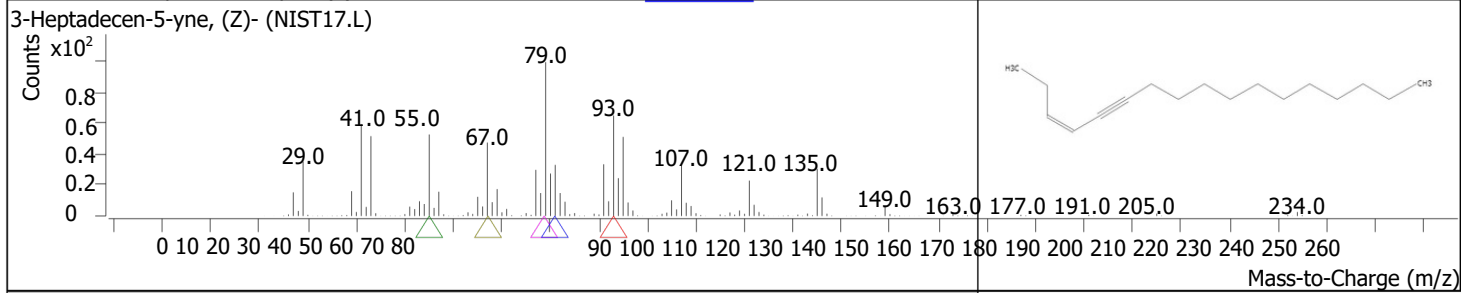
RT	Compound Name	CAS#	Formula	Area	Match Score	Sample	Sample
29.7289	1,3-Bis-(2-cyclopropyl,2-methylcyclopropyl)-but-2-en-1-one	1000222-08-6	C18H26O	55636	78.0	0.02	0.10



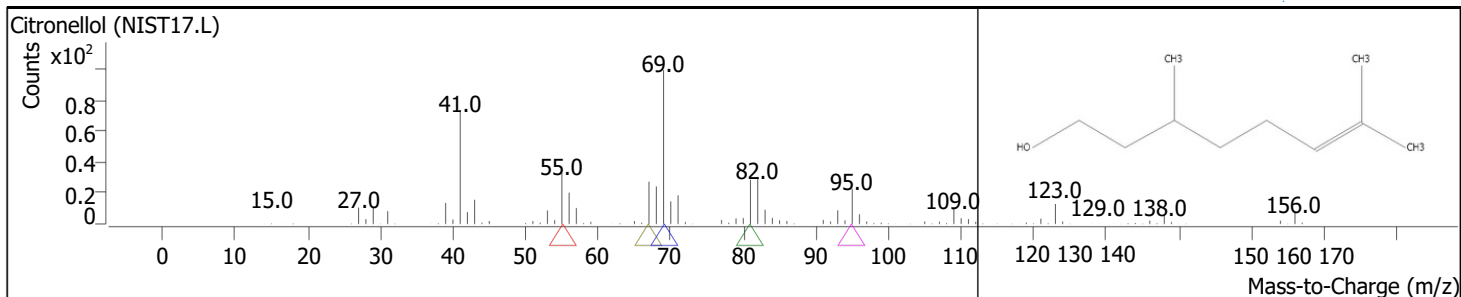
RT	Compound Name	CAS#	Formula	Area	Match Score	Sample	Sample
29.8834	Bicyclo[5.2.0]nonane, 4-methylene-2,8,8-trimethyl-2-vinyl-	1000159-38-2	C15H24	168757	83.0	0.07	0.31



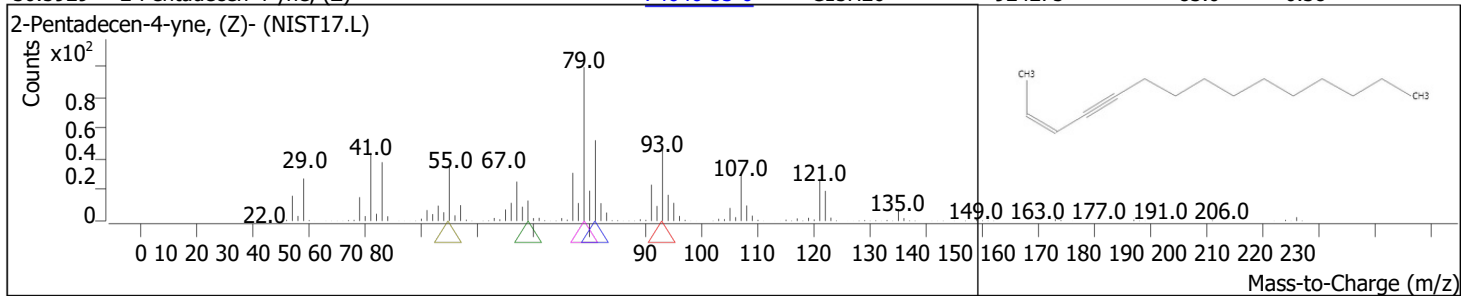
RT	Compound Name	CAS#	Formula	Area	Match Score	Sample	Sample
30.3182	3-Heptadecen-5-yne, (Z)-	74744-55-1	C17H30	288437	82.1	0.12	0.53



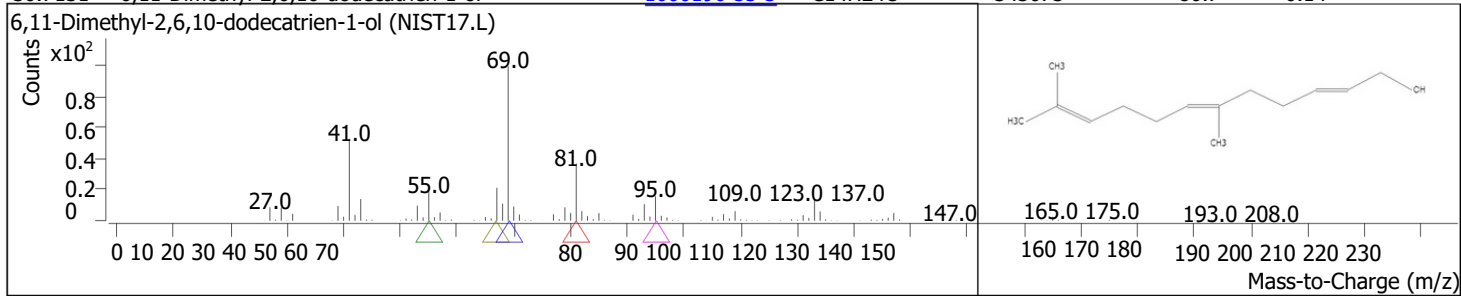
RT	Compound Name	CAS#	Formula	Area	Match Score	Sample	Sample
30.4155	Citronellol	106-22-9	C10H20O	1132330	86.3	0.47	2.08



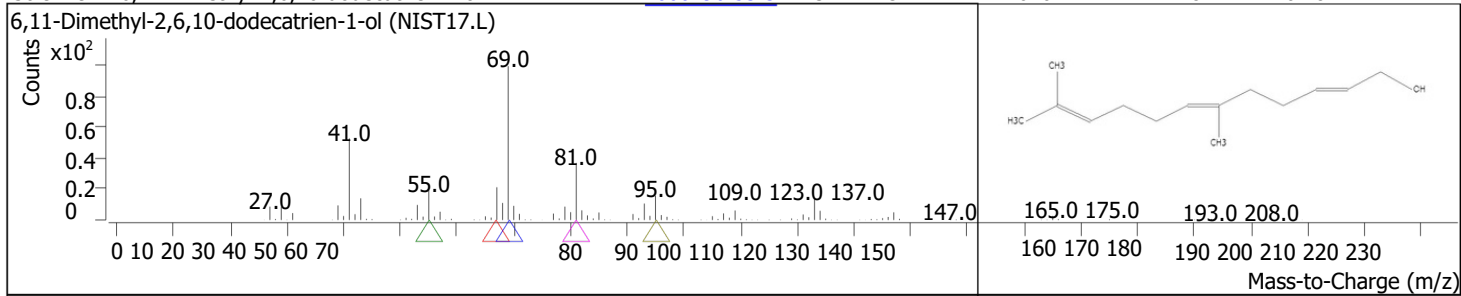
RT	Compound Name	CAS#	Formula	Area	Match Score	Sample	Sample
30.5929	2-Pentadecen-4-yne, (Z)-	74646-33-6	C15H26	924275	83.0	0.38	1.70



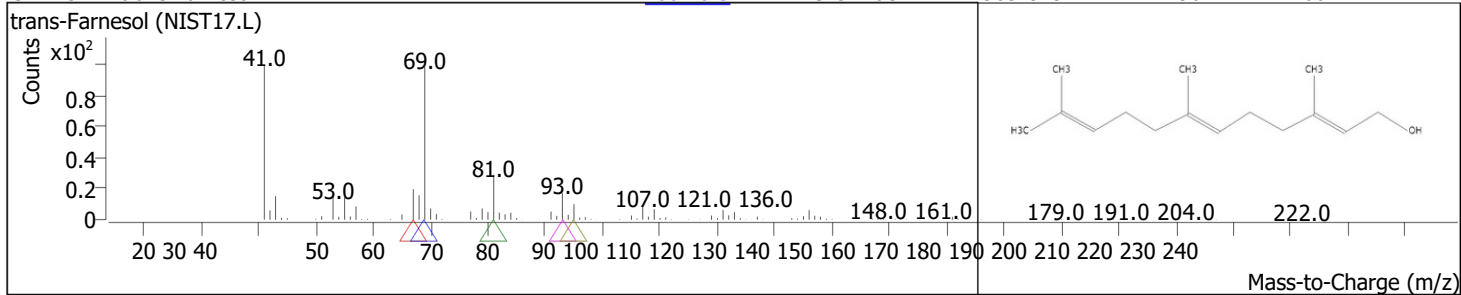
RT	Compound Name	CAS#	Formula	Area	Match Score	Sample	Sample
30.7131	6,11-Dimethyl-2,6,10-dodecatrien-1-ol	1000196-53-3	C14H24O	343073	80.7	0.14	0.63



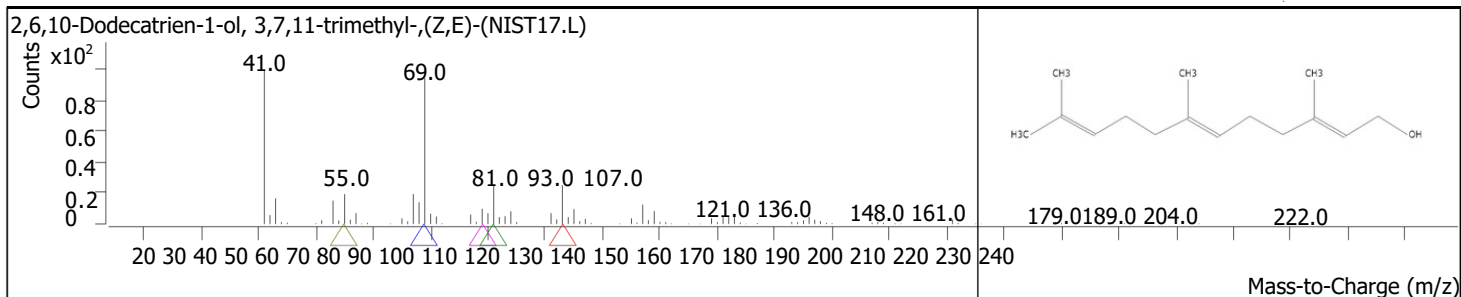
RT	Compound Name	CAS#	Formula	Area	Match Score	Sample	Sample
30.9419	6,11-Dimethyl-2,6,10-dodecatrien-1-ol	1000196-53-3	C14H24O	440702	78.7	0.18	0.81



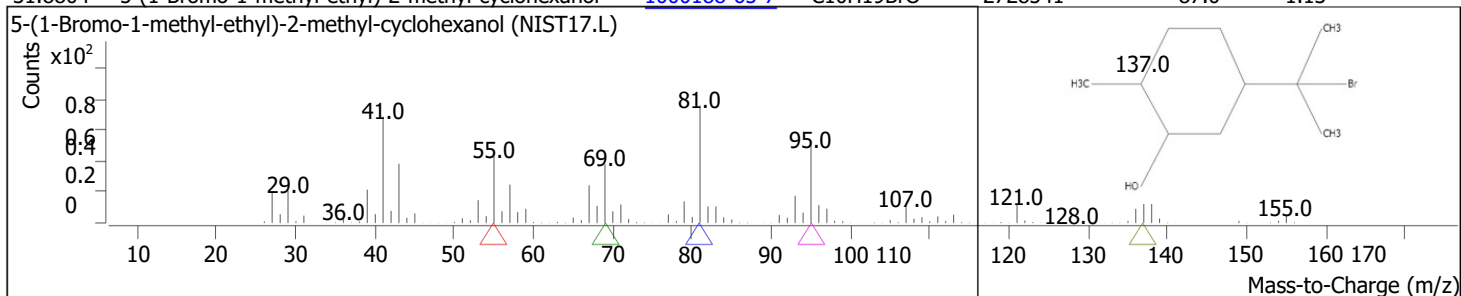
RT	Compound Name	CAS#	Formula	Area	Match Score	Sample	Sample
31.2452	trans-Farnesol	106-28-5	C15H26O	9837919	90.4	4.06	18.09



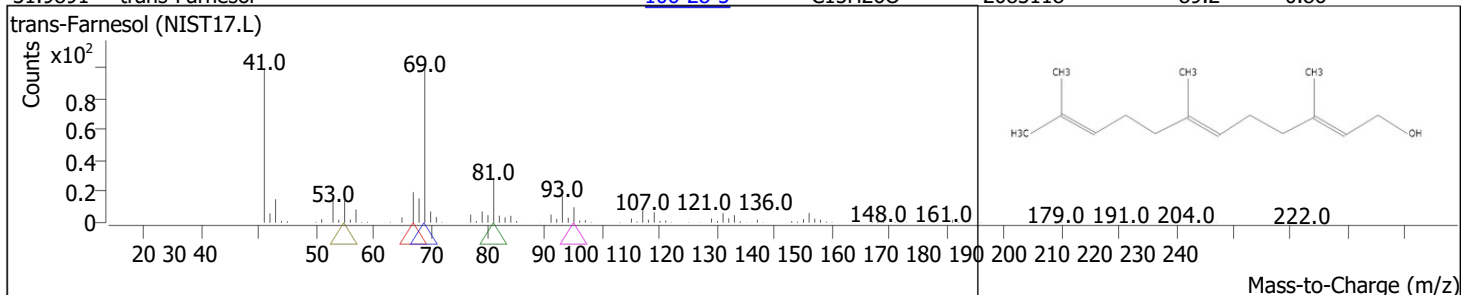
RT	Compound Name	CAS#	Formula	Area	Match Score	Sample	Sample
31.5370	2,6,10-Dodecatrien-1-ol, 3,7,11-trimethyl-, (Z,E)-	3790-71-4	C15H26O	1270435	84.2	0.52	2.34



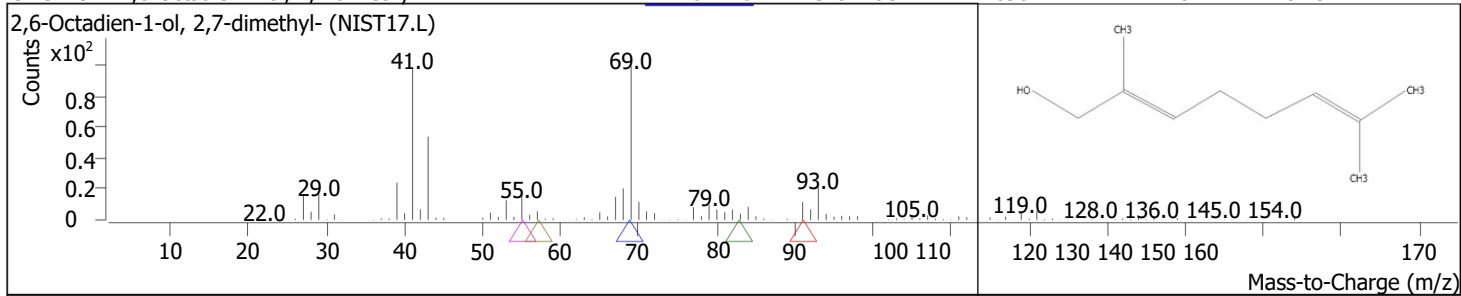
RT	Compound Name	CAS#	Formula	Area	Match Score	Sample	Sample
31.8804	5-(1-Bromo-1-methyl-ethyl)-2-methyl-cyclohexanol	1000188-65-7	C10H19BrO	2728541	87.0	1.13	5.02



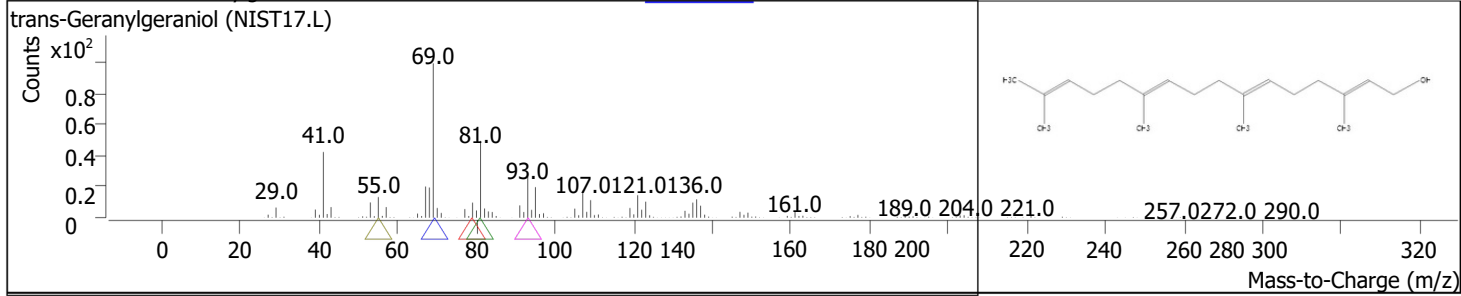
RT	Compound Name	CAS#	Formula	Area	Match Score	Sample	Sample
31.9891	trans-Farnesol	106-28-5	C15H26O	2083118	89.2	0.86	3.83



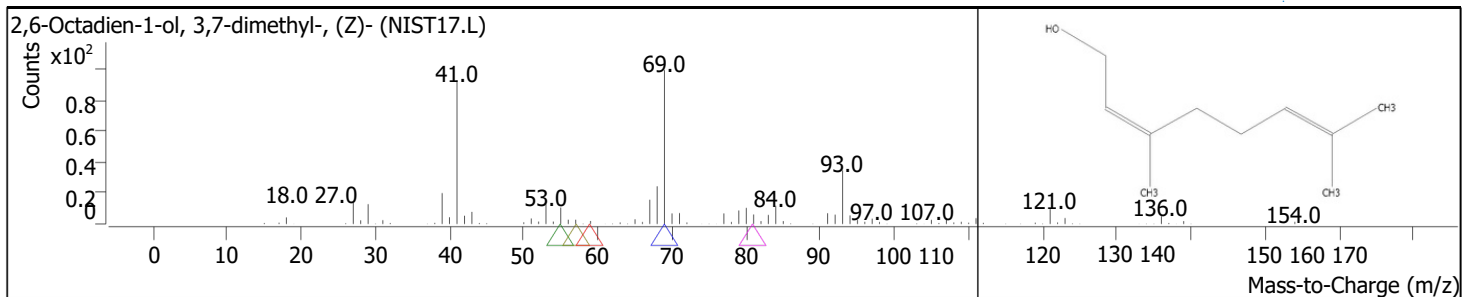
RT	Compound Name	CAS#	Formula	Area	Match Score	Sample	Sample
32.3725	2,6-Octadien-1-ol, 2,7-dimethyl-	22410-74-8	C10H18O	1090744	81.7	0.45	2.01



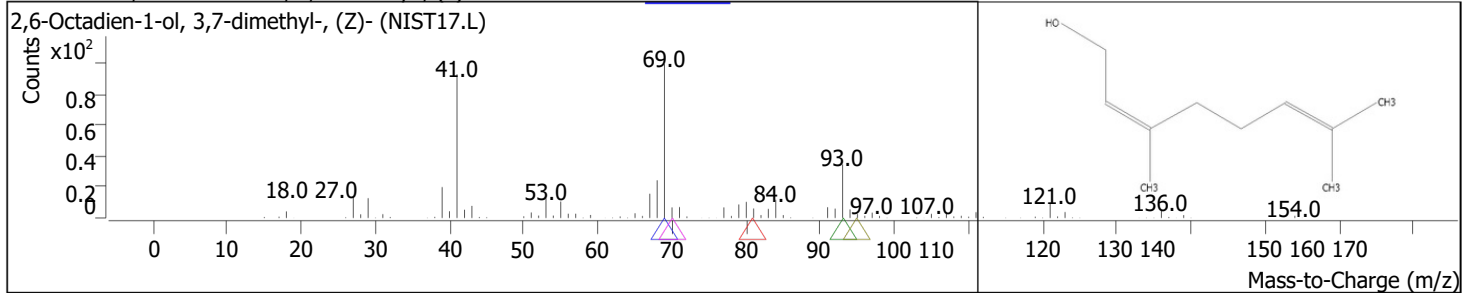
RT	Compound Name	CAS#	Formula	Area	Match Score	Sample	Sample
32.5727	trans-Geranylgeraniol	24034-73-9	C20H34O	3602292	86.7	1.49	6.62



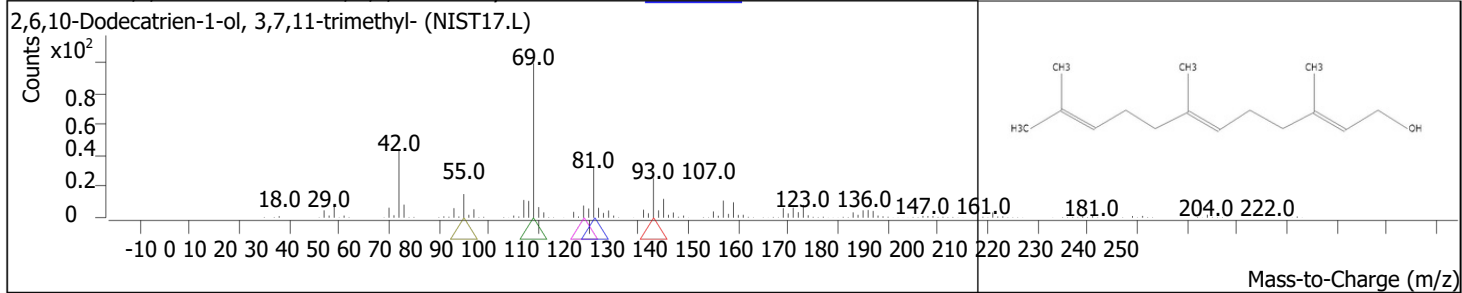
RT	Compound Name	CAS#	Formula	Area	Match Score	Sample	Sample
32.6986	2,6-Octadien-1-ol, 3,7-dimethyl-, (Z)-	106-25-2	C10H18O	123824	76.9	0.05	0.23



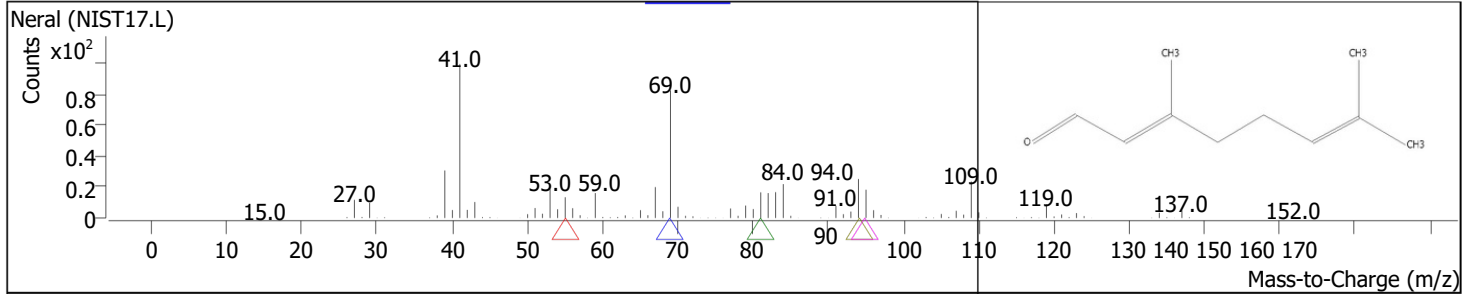
RT	Compound Name	CAS#	Formula	Area	Match Score	Sample	Sample
32.8131	2,6-Octadien-1-ol, 3,7-dimethyl-, (Z)-	106-25-2	C10H18O	107653	79.5	0.04	0.20



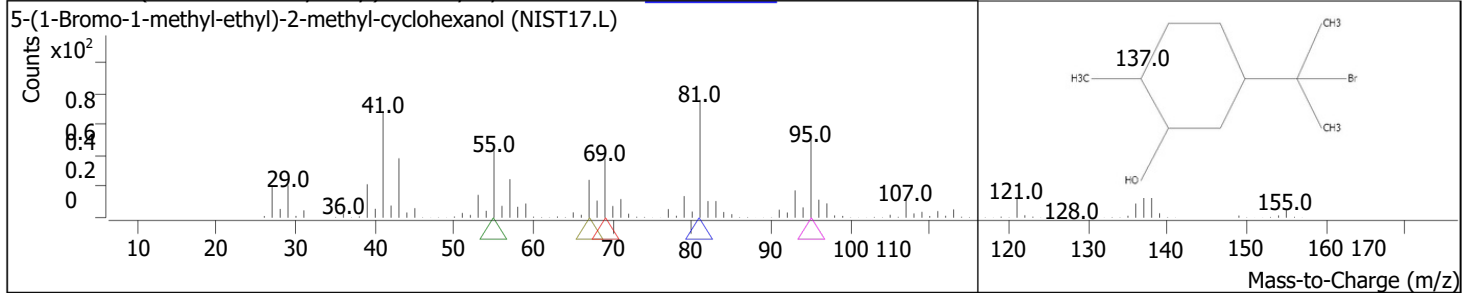
RT	Compound Name	CAS#	Formula	Area	Match Score	Sample	Sample
32.9561	2,6,10-Dodecatrien-1-ol, 3,7,11-trimethyl-	4602-84-0	C15H26O	2367126	83.0	0.98	4.35



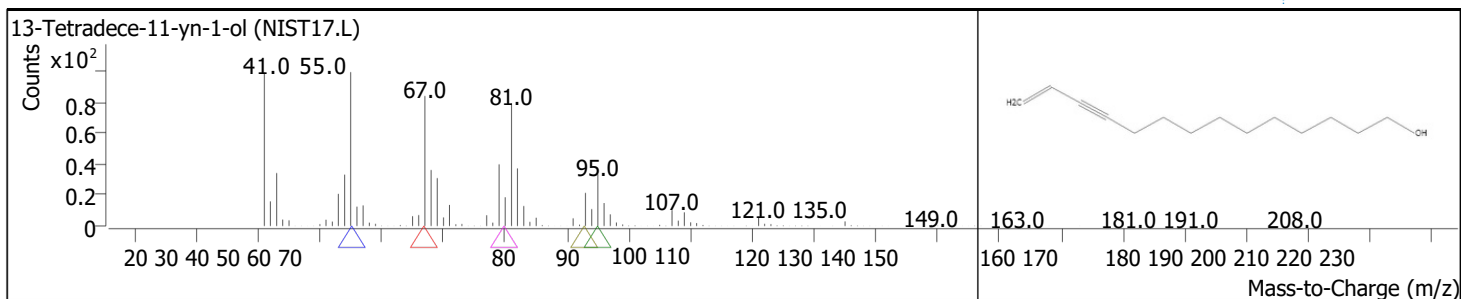
RT	Compound Name	CAS#	Formula	Area	Match Score	Sample	Sample
33.2308	Neral	106-26-3	C10H16O	2050128	85.0	0.85	3.77



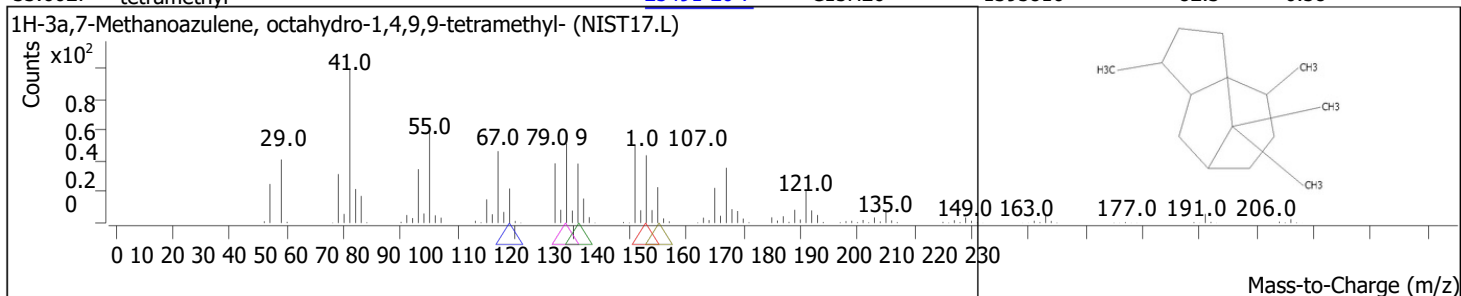
RT	Compound Name	CAS#	Formula	Area	Match Score	Sample	Sample
33.3795	5-(1-Bromo-1-methyl-ethyl)-2-methyl-cyclohexanol	1000188-65-7	C10H19BrO	449231	83.8	0.19	0.83



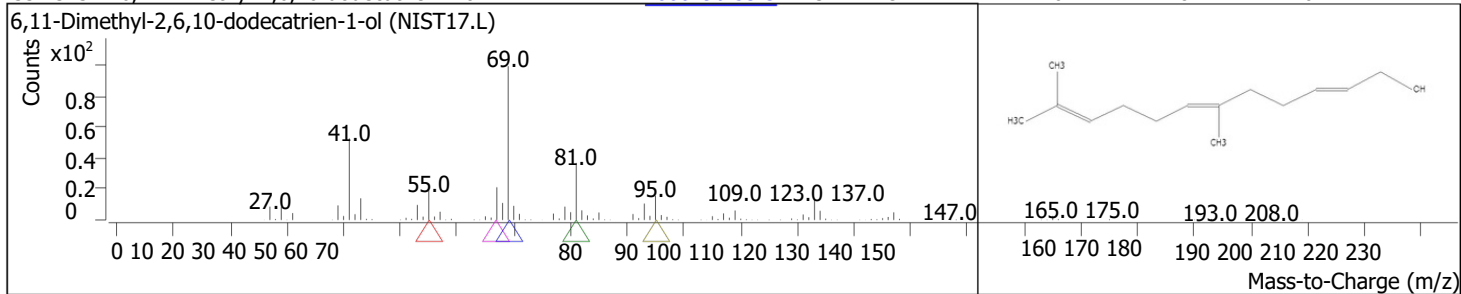
RT	Compound Name	CAS#	Formula	Area	Match Score	Sample	Sample
33.4997	13-Tetradec-11-yn-1-ol	1000131-00-4	C14H24O	169287	76.8	0.07	0.31



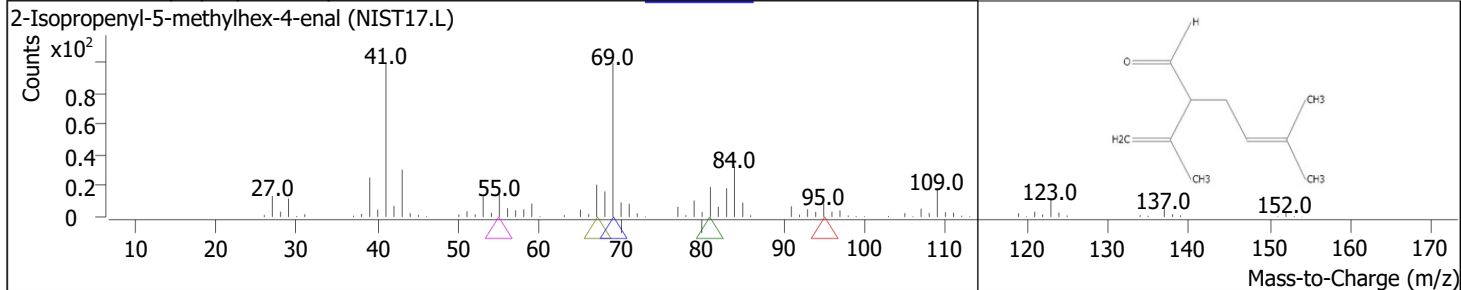
RT	Compound Name	CAS#	Formula	Area	Match Score	Sample	Sample
33.6027	1H-3a,7-Methanoazulene, octahydro-1,4,9,9-tetramethyl-	25491-20-7	C15H26	1395816	82.3	0.58	2.57



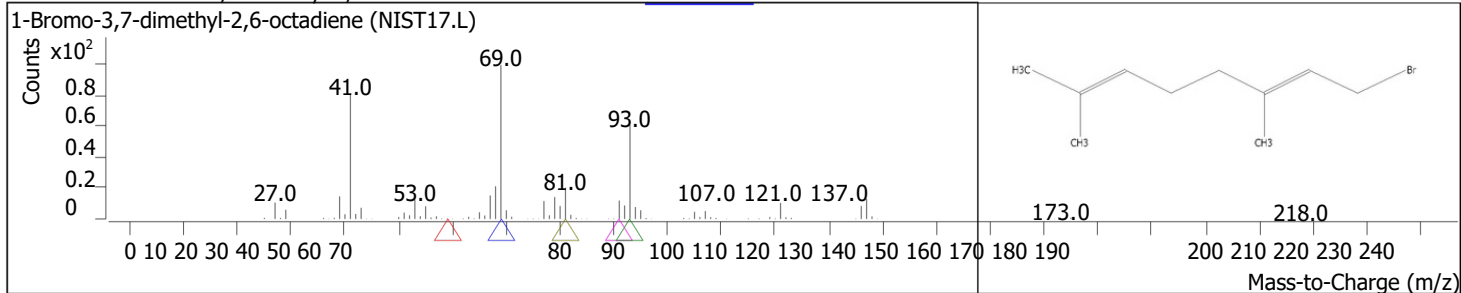
RT	Compound Name	CAS#	Formula	Area	Match Score	Sample	Sample
33.7343	6,11-Dimethyl-2,6,10-dodecatrien-1-ol	1000196-53-3	C14H24O	2474470	87.1	1.02	4.55



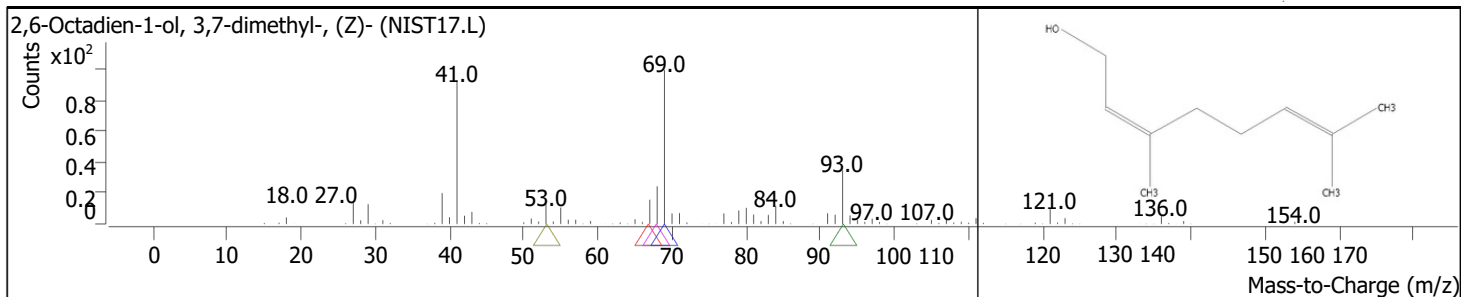
RT	Compound Name	CAS#	Formula	Area	Match Score	Sample	Sample
34.1406	2-Isopropenyl-5-methylhex-4-enal	75697-98-2	C10H16O	2074219	85.7	0.86	3.81



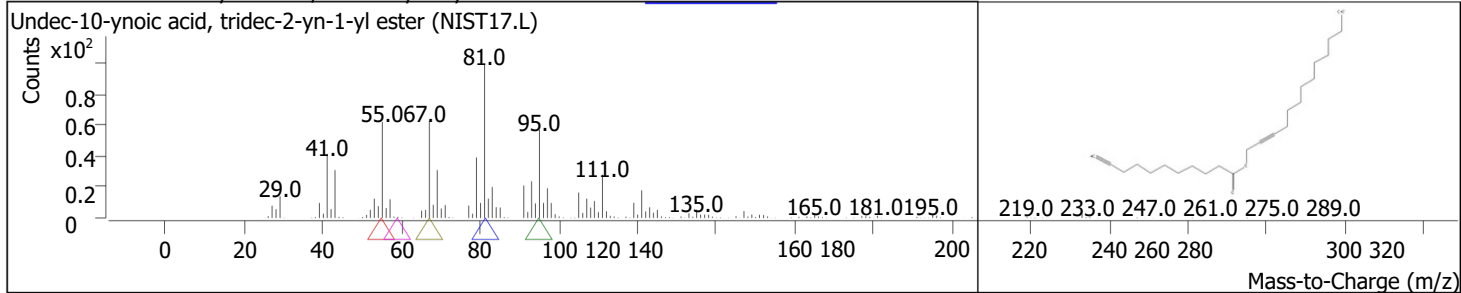
RT	Compound Name	CAS#	Formula	Area	Match Score	Sample	Sample
34.2779	1-Bromo-3,7-dimethyl-2,6-octadiene	35719-26-7	C10H17Br	807422	74.4	0.33	1.48



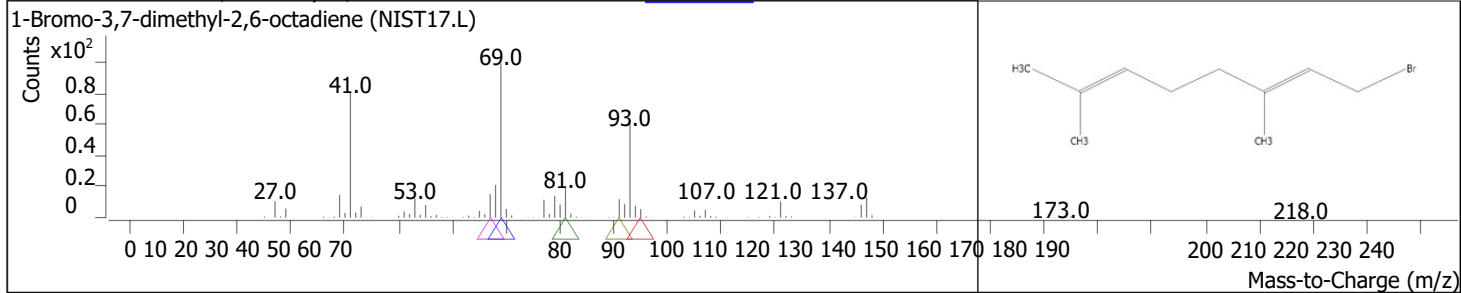
RT	Compound Name	CAS#	Formula	Area	Match Score	Sample	Sample
34.3981	2,6-Octadien-1-ol, 3,7-dimethyl-, (Z)-	106-25-2	C10H18O	652547	88.5	0.27	1.20



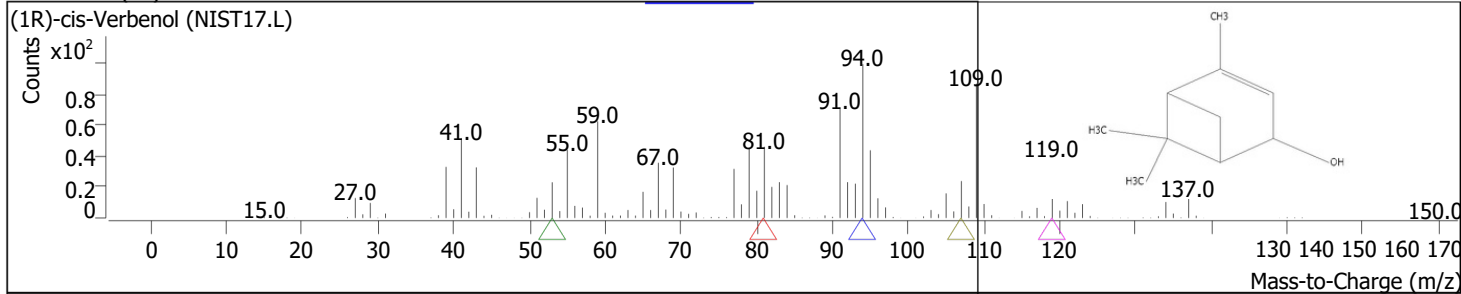
RT	Compound Name	CAS#	Formula	Area	Match Score	Sample	Sample
34.4896	Undec-10-ynoic acid, tridec-2-yn-1-yl ester	1000406-96-9	C ₂₄ H ₄₀ O ₂	1636579	80.9	0.68	3.01



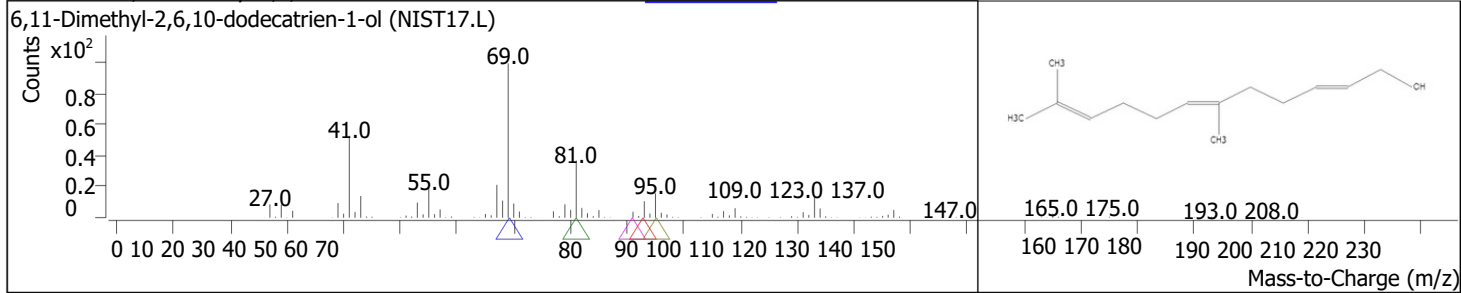
RT	Compound Name	CAS#	Formula	Area	Match Score	Sample	Sample
34.6784	1-Bromo-3,7-dimethyl-2,6-octadiene	35719-26-7	C ₁₀ H ₁₇ Br	154601	82.6	0.06	0.28



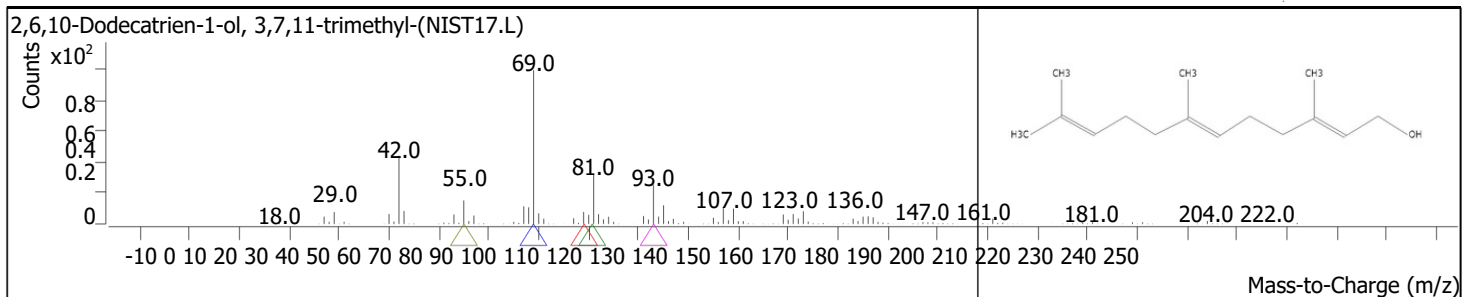
RT	Compound Name	CAS#	Formula	Area	Match Score	Sample	Sample
34.8215	(1R)-cis-Verbenol	13040-03-4	C ₁₀ H ₁₆ O	151342	69.4	0.06	0.28



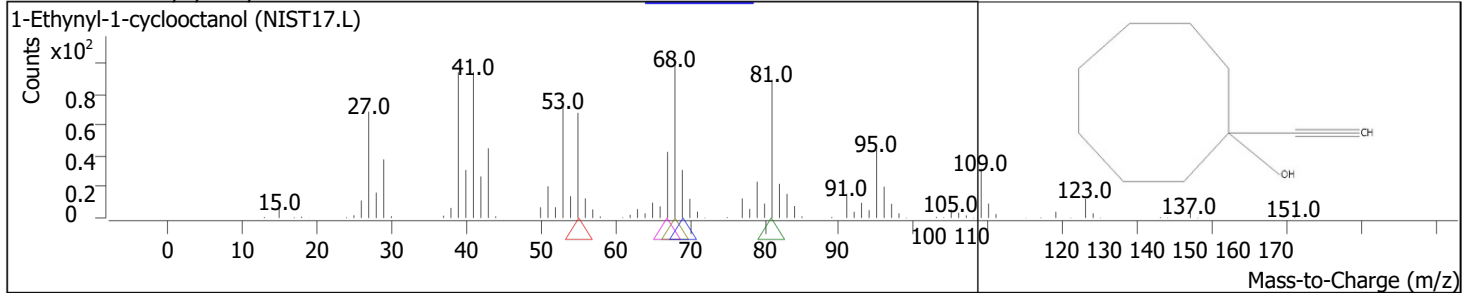
RT	Compound Name	CAS#	Formula	Area	Match Score	Sample	Sample
35.0675	6,11-Dimethyl-2,6,10-dodecatrien-1-ol	1000196-53-3	C ₁₄ H ₂₄ O	686392	84.9	0.28	1.26



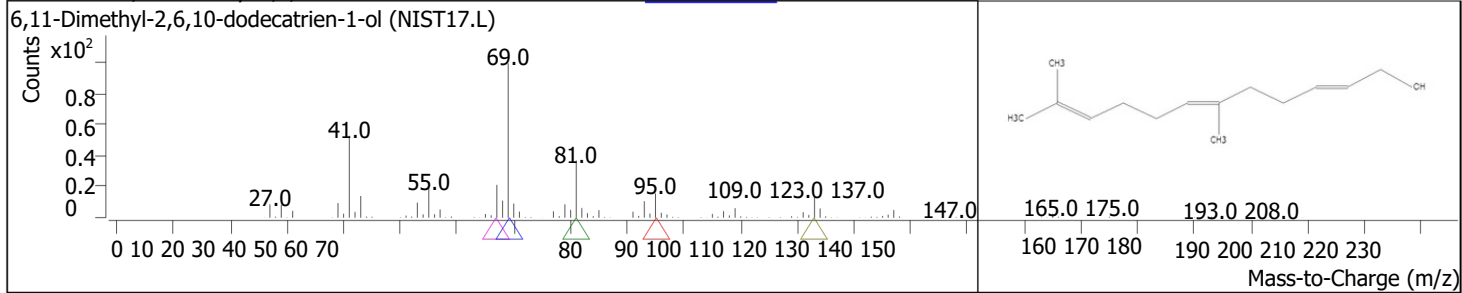
RT	Compound Name	CAS#	Formula	Area	Match Score	Sample	Sample
35.2049	2,6,10-Dodecatrien-1-ol, 3,7,11-trimethyl-	4602-84-0	C ₁₅ H ₂₆ O	5160986	85.8	2.13	9.49



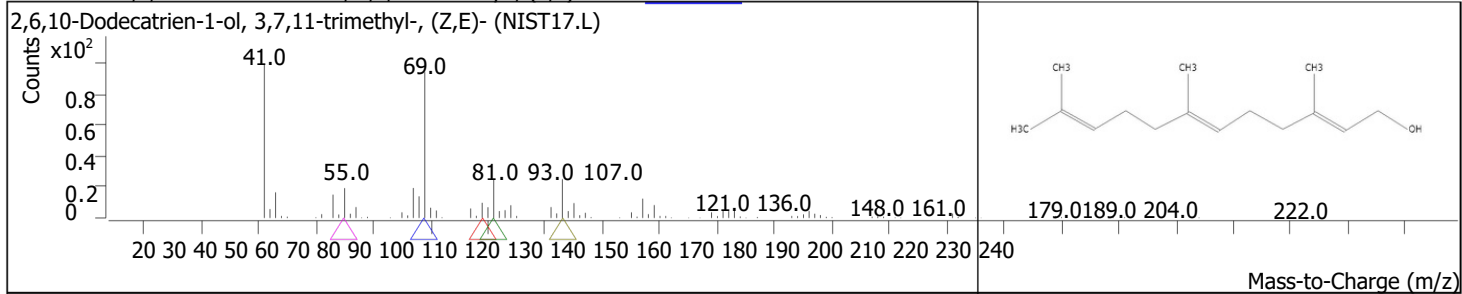
RT	Compound Name	CAS#	Formula	Area	Match Score	Sample	Sample
35.3880	1-Ethynyl-1-cyclooctanol	55373-76-7	C10H16O	140985	83.6	0.06	0.26



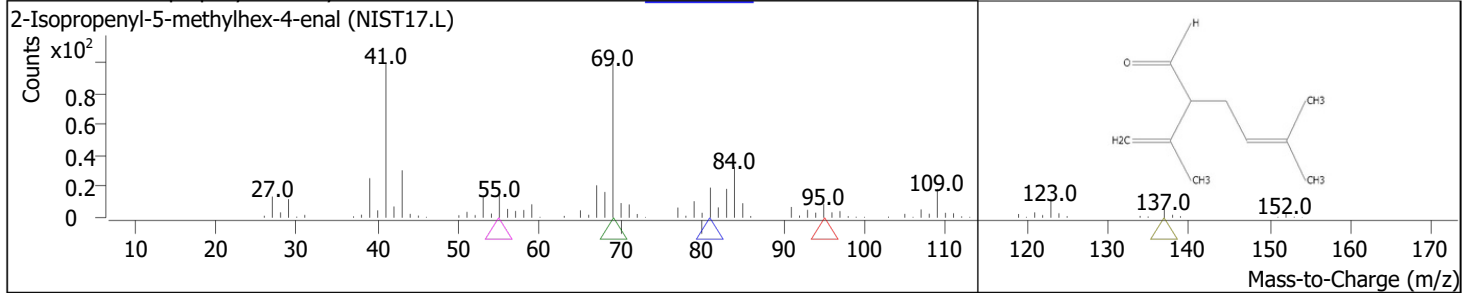
RT	Compound Name	CAS#	Formula	Area	Match Score	Sample	Sample
35.5882	6,11-Dimethyl-2,6,10-dodecatrien-1-ol	1000196-53-3	C14H24O	8275996	92.3	3.42	15.22



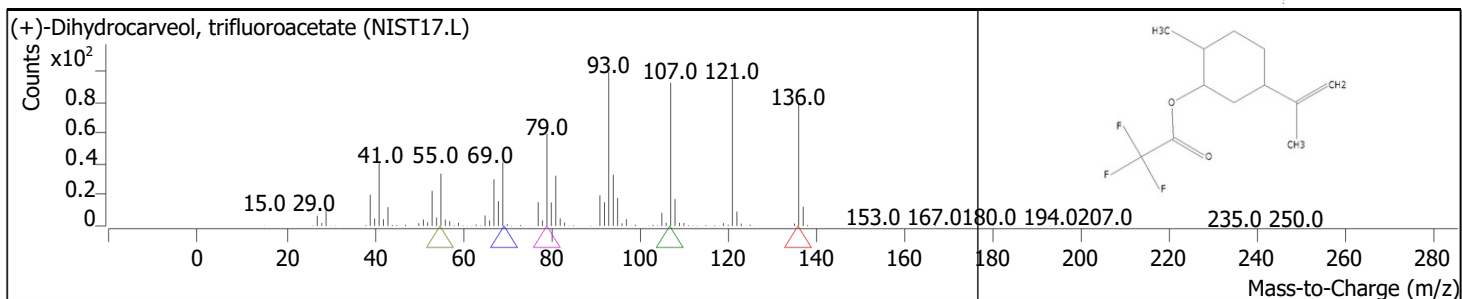
RT	Compound Name	CAS#	Formula	Area	Match Score	Sample	Sample
35.7885	2,6,10-Dodecatrien-1-ol, 3,7,11-trimethyl-, (Z,E)-	3790-71-4	C15H26O	557075	82.8	0.23	1.02



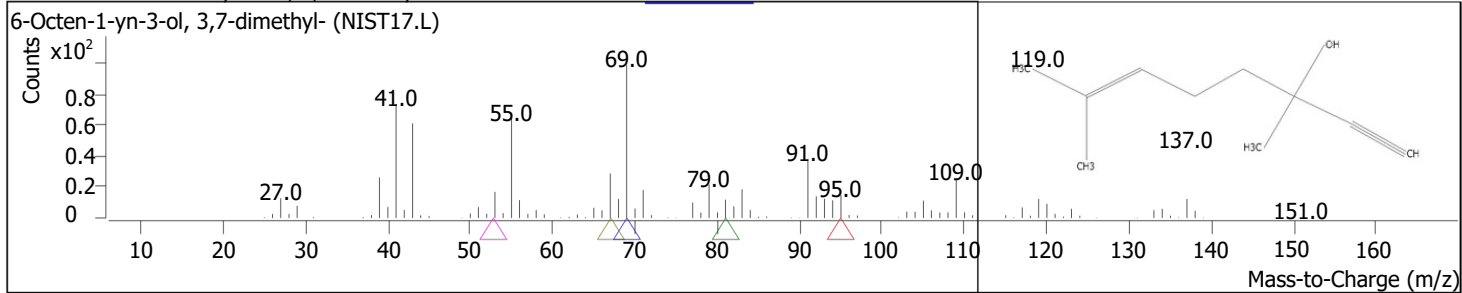
RT	Compound Name	CAS#	Formula	Area	Match Score	Sample	Sample
35.9201	2-Isopropenyl-5-methylhex-4-enal	75697-98-2	C10H16O	1356683	86.4	0.56	2.50



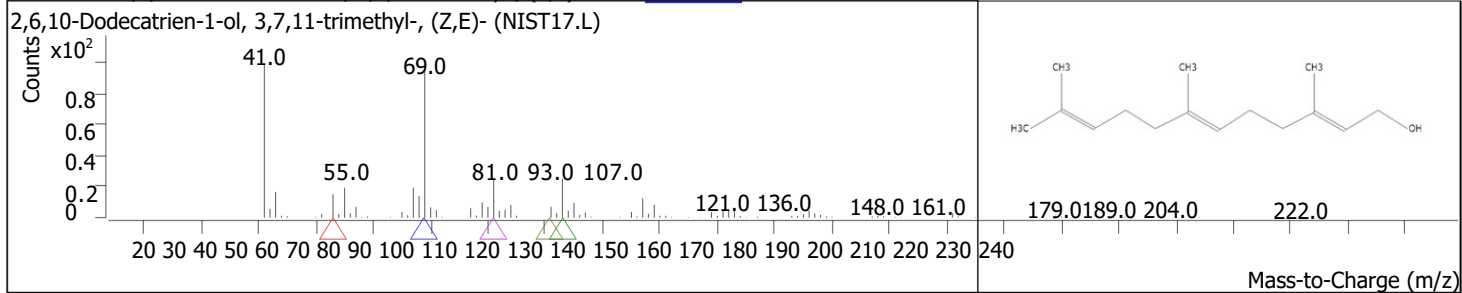
RT	Compound Name	CAS#	Formula	Area	Match Score	Sample	Sample
36.1490	(+)-Dihydrocarveol, trifluoroacetate	1000462-97-6	C12H17F3O 2	1122474	84.7	0.46	2.06



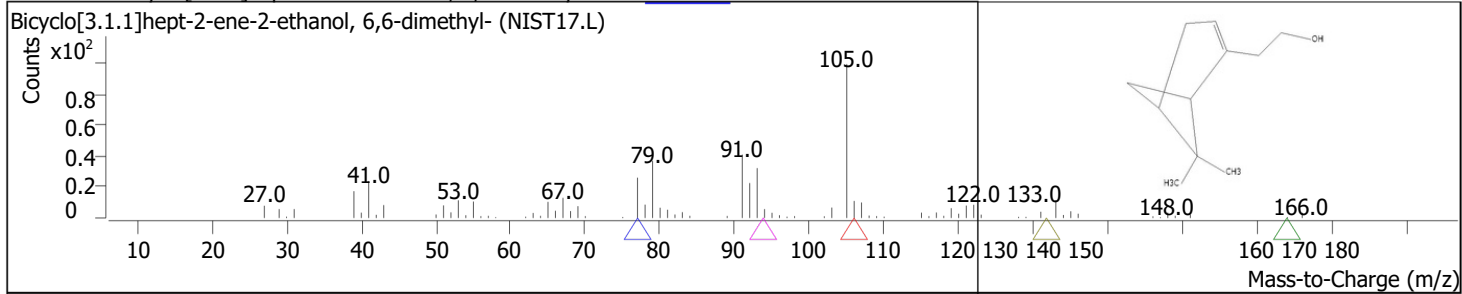
RT	Compound Name	CAS#	Formula	Area	Match Score	Sample	Sample
36.3092	6-Octen-1-yn-3-ol, 3,7-dimethyl-	29171-20-8	C10H16O	96593	78.3	0.04	0.18



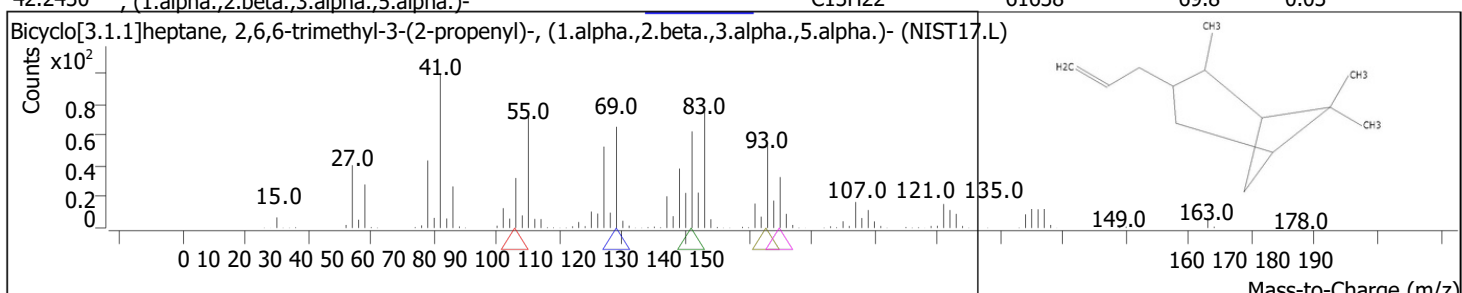
RT	Compound Name	CAS#	Formula	Area	Match Score	Sample	Sample
36.8356	2,6,10-Dodecatrien-1-ol, 3,7,11-trimethyl-, (Z,E)-	3790-71-4	C15H26O	356061	77.5	0.15	0.65



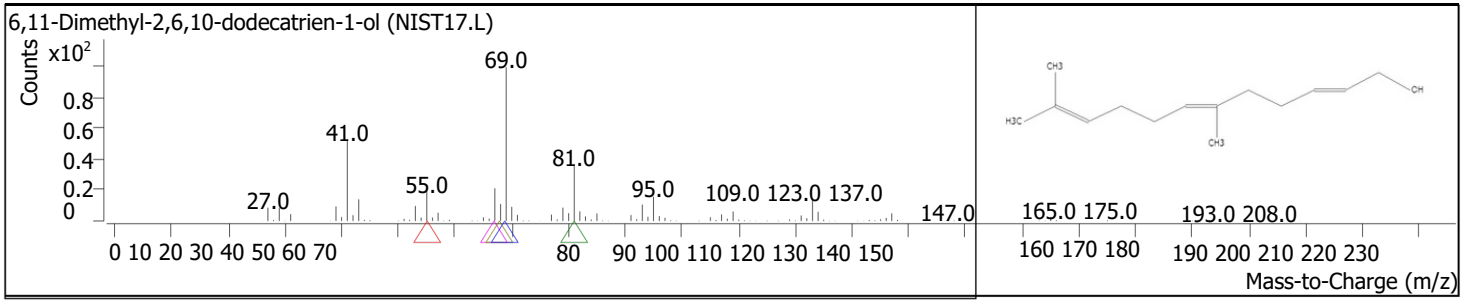
RT	Compound Name	CAS#	Formula	Area	Match Score	Sample	Sample
39.6337	Bicyclo[3.1.1]hept-2-ene-2-ethanol, 6,6-dimethyl-	128-50-7	C11H18O	42117	64.9	0.02	0.08



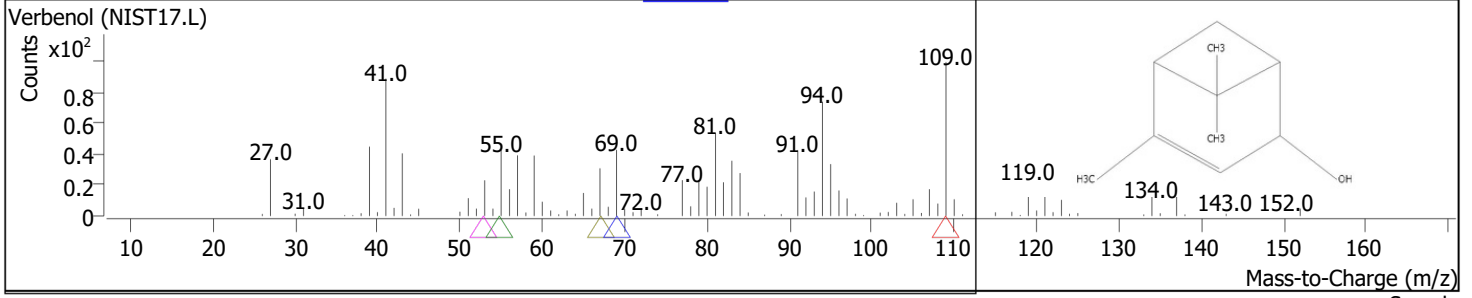
RT	Compound Name	CAS#	Formula	Area	Match Score	Sample	Sample
42.2430	Bicyclo[3.1.1]heptane, 2,6,6-trimethyl-3-(2-propenyl)-, (1.alpha.,2.beta.,3.alpha.,5.alpha.)-	50746-55-9	C13H22	61638	69.8	0.03	0.11



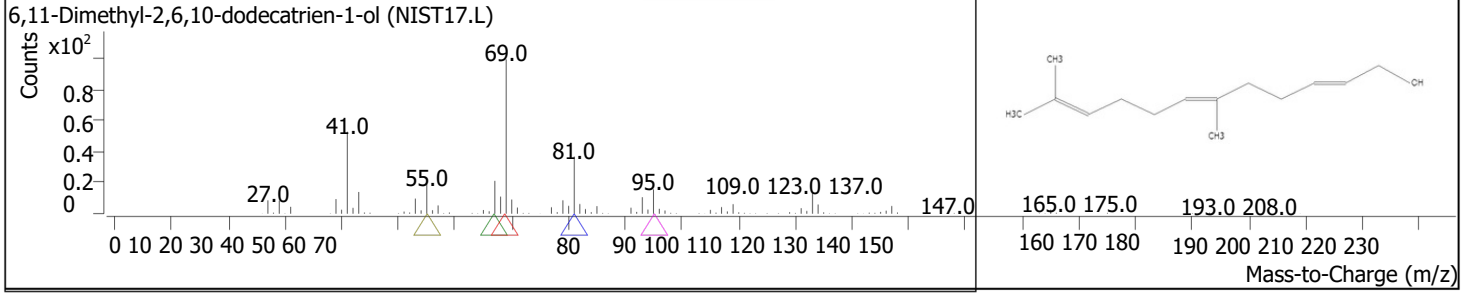
RT	Compound Name	CAS#	Formula	Area	Match Score	Sample	Sample
43.5075	6,11-Dimethyl-2,6,10-dodecatrien-1-ol	1000196-53-3	C14H24O	135121	84.4	0.06	0.25



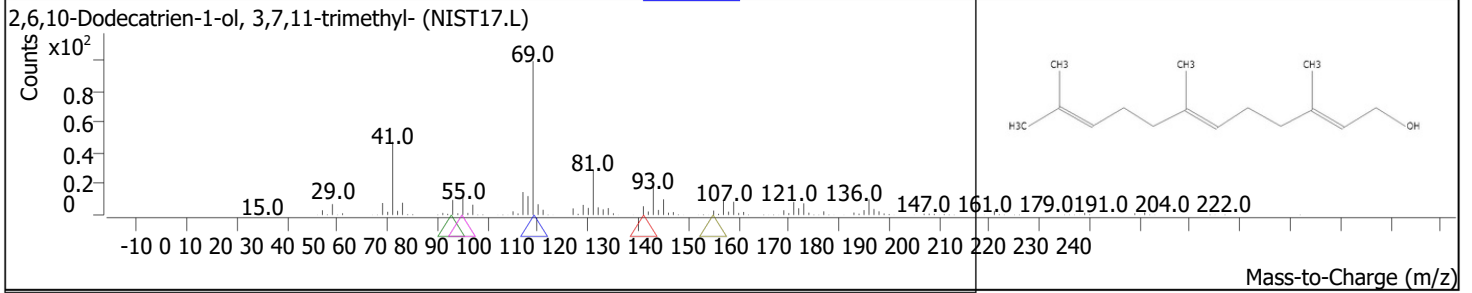
RT	Compound Name	CAS#	Formula	Area	Match Score	Sample	Sample
55.2263	Verbenol	473-67-6	C10H16O	85834	72.1	0.04	0.16



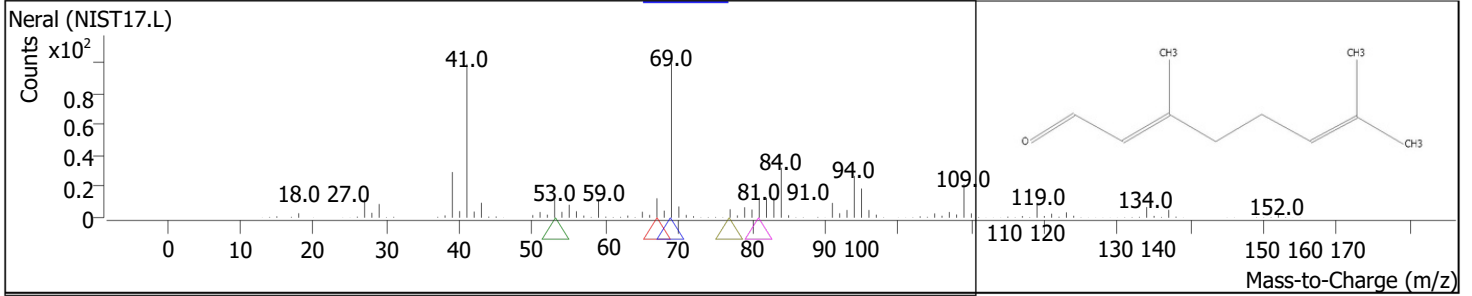
RT	Compound Name	CAS#	Formula	Area	Match Score	Sample	Sample
56.2105	6,11-Dimethyl-2,6,10-dodecatrien-1-ol	1000196-53-3	C14H24O	92686	68.8	0.04	0.17



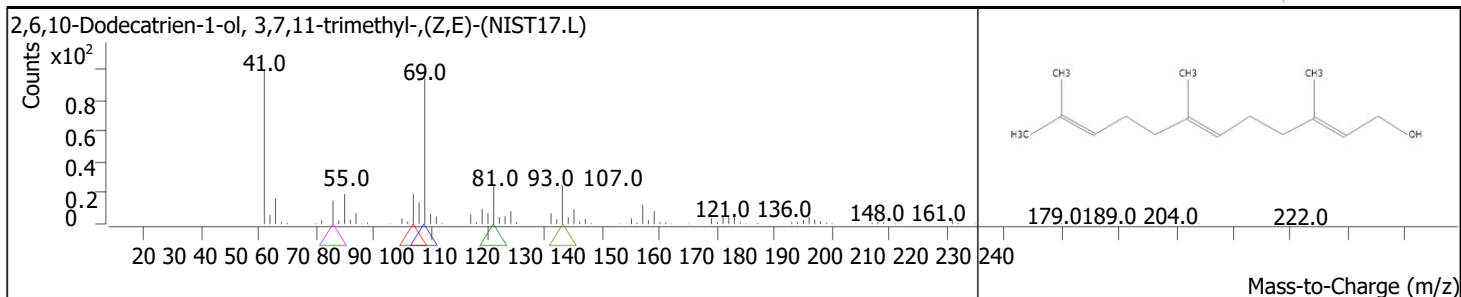
RT	Compound Name	CAS#	Formula	Area	Match Score	Sample	Sample
56.4451	2,6,10-Dodecatrien-1-ol, 3,7,11-trimethyl-	4602-84-0	C15H26O	101816	66.2	0.04	0.19



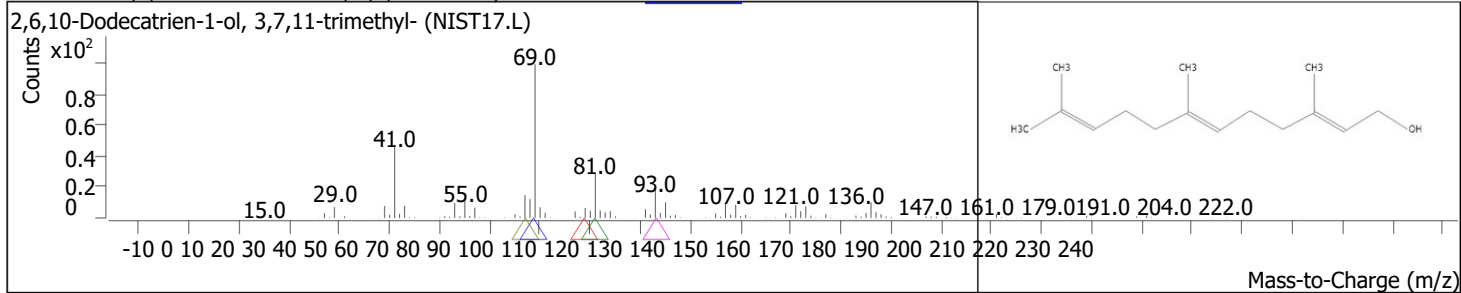
RT	Compound Name	CAS#	Formula	Area	Match Score	Sample	Sample
56.6396	Neral	106-26-3	C10H16O	107603	73.3	0.04	0.20



RT	Compound Name	CAS#	Formula	Area	Match Score	Sample	Sample
57.0631	2,6,10-Dodecatrien-1-ol, 3,7,11-trimethyl-, (Z,E)-	3790-71-4	C15H26O	199509	72.6	0.08	0.37



RT	Compound Name	CAS#	Formula	Area	Match Score	Sample	Sample
57.8813	2,6,10-Dodecatrien-1-ol, 3,7,11-trimethyl-	4602-84-0	C15H26O	119188	71.0	0.05	0.22



RT	Compound Name	CAS#	Formula	Area	Match Score	Sample	Sample
58.6252	2,6,10-Dodecatrien-1-ol, 3,7,11-trimethyl-	4602-84-0	C15H26O	139895	76.9	0.06	0.26

